

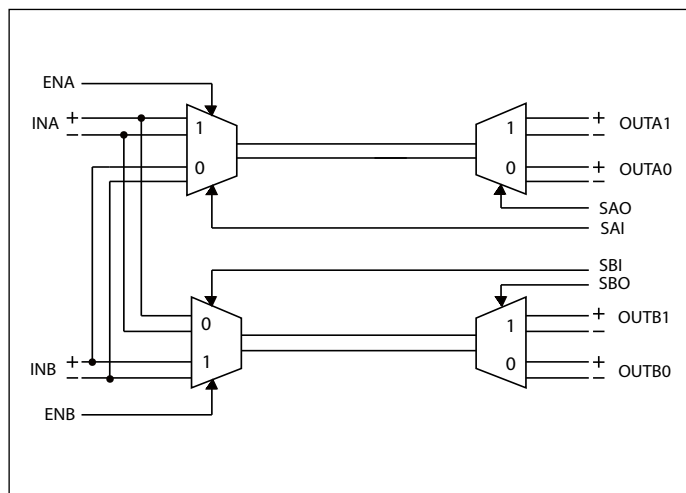
### Features

- 2:4 Differential Multiplexer/Demultiplexer
- Bidirectional Operation
- Can be used in
  - Single 1:4 Configuration
  - Dual 1:2 Configuration
  - Fan out 1:2 Configuration
- High BW (1.2 GHz Typ)
- Low RON and CON:
  - 13 Ω RON Typ
  - 9 pF CON Typ
- ESD Performance (I/O Pins)
  - ±8-kV Contact Discharge (IEC61000-4-2)
  - 2-kV Human Body Model per JESD22-A114E (to GND)
- ESD Performance (All Pins)
  - 2-kV Human Body Model per JESD22-A114E
- Small QFN package (3 x 3 mm, 0.4 mm pitch)

### Applications

- Desktop/Notebooks Computers
- DisplayPort Auxiliary Channel Multiplexing
- USB 2.0 Multiplexing
- Netbooks/eBooks/Tablets

### Block Diagram



### Description

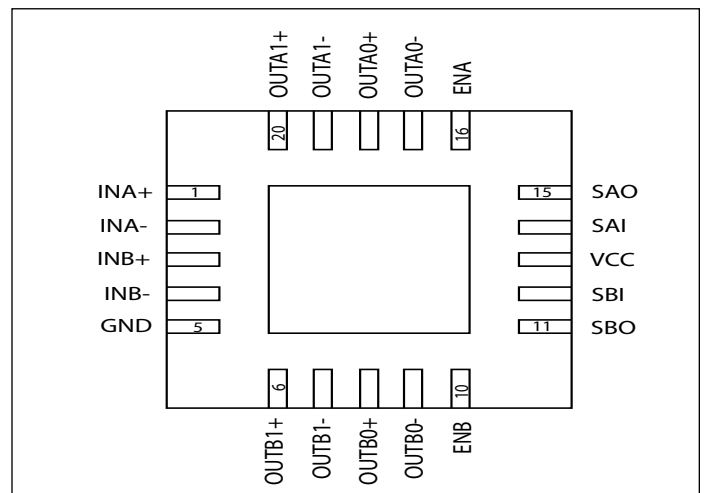
The PI3DBS3224 is a 2:4 bidirectional multiplexer for high-speed differential and single ended signal applications (up to 720 Mbps). The PI3DBS3224 can be used in a 1:4 or dual 1:2 multiplexer/demultiplexer configuration. The PI3DBS3224 offers a high BW of 1.2 GHz with channel RON of 13 Ω (Typ).

The PI3DBS3224 can also be used to fan out a differential or single ended signal pair to two ports simultaneously (fan-out configuration). The BW performance is lower in this configuration.

The PI3DBS3224 operates with a 3 to 3.6V power supply. It features ESD protection of up to ±8-kV contact discharge and 2-kV Human Body Model on its I/O pins.

The PI3DBS3224 provides fail-safe protection by isolating the I/O pins with high impedance when the power supply (V<sub>CC</sub>) is not present.

### Pin Configuration



**Pin Description**

| Pin # | PIN Name | I/O Type | Description   |
|-------|----------|----------|---------------|
| 14    | SAI      | Input    | Control Input |
| 15    | SAO      | Input    | Control Input |
| 12    | SBI      | Input    | Control Input |
| 11    | SBO      | Input    | Control Input |
| 16    | ENA      | Input    | Enable        |
| 1     | INA+     | I/O      | Input A       |
| 2     | INA-     | I/O      | Input A       |
| 10    | ENB      | Input    | Enable        |
| 3     | INB+     | I/O      | Input B       |
| 4     | INB-     | I/O      | Input B       |
| 9     | OUTB0-   | I/O      | Output B0     |
| 8     | OUTB0+   | I/O      | Output B0     |
| 7     | OUTB1-   | I/O      | Output B1     |
| 6     | OUTB1+   | I/O      | Output B1     |
| 5     | GND      | Ground   | Ground        |
| 13    | VCC      | Power    | Power Supply  |
| 17    | OUTA0-   | I/O      | Output A0     |
| 18    | OUTA0+   | I/O      | Output A0     |
| 19    | OUTA1-   | I/O      | Output A1     |
| 20    | OUTA1+   | I/O      | Output A1     |

**Function Table**

| ENA, ENB | OUTA0 | OUTA1 | OUTB0 | OUTB1 |
|----------|-------|-------|-------|-------|
| 00       | Hi-Z  | Hi-Z  | Hi-Z  | Hi-Z  |
| 01       | Hi-Z  | Hi-Z  | -     | -     |
| 10       | -     | -     | Hi-Z  | Hi-Z  |
| 11       | -     | -     | -     | -     |

| SAI, SAO, SBI, SBO | OUTA0 | OUTA1 | OUTB0 | OUTB1 |
|--------------------|-------|-------|-------|-------|
| 0000               | INB   | -     | INA   | -     |
| 0001               | INB   | -     | -     | INA   |
| 0010               | INB   | -     | INB   | -     |
| 0011               | INB   | -     | -     | INB   |
| 0100               | -     | INB   | INA   | -     |
| 0101               | -     | INB   | -     | INA   |
| 0110               | -     | INB   | INB   | -     |
| 0111               | -     | INB   | -     | INB   |
| 1000               | INA   | -     | INA   | -     |
| 1001               | INA   | -     | -     | INA   |
| 1010               | INA   | -     | INB   | -     |
| 1011               | INA   | -     | -     | INB   |
| 1100               | -     | INA   | INA   | -     |
| 1101               | -     | INA   | -     | INA   |
| 1110               | -     | INA   | INB   | -     |
| 1111               | -     | INA   | -     | INB   |

## Maximum Ratings

(Above which useful life may be impaired. For user guidelines, not tested.)

|   |                |
|---|----------------|
| Storage Temperature.....                | -65°C to+155°C |
| Supply Voltage to Ground Potential..... | -0.3V to+4.0V  |
| DC Input Voltage .....                  | -0.3V to+4.3V  |
| DC Output Current .....                 | 120mA          |
| Power Dissipation .....                 | 0.5W           |

### Note:

Stresses greater than those listed under MAXIMUM RATINGS may cause permanent damage to the device. This is a stress rating only and functional operation of the device at these or any other conditions above those indicated in the operational sections of this specification is not implied. Exposure to absolute maximum rating conditions for extended periods may affect reliability.

## DC Electrical Characteristics over Operating Range

For Single 1:4 or Dual 1:2 configurations.  $T_A = -40\text{ }^\circ\text{C}$  to  $85\text{ }^\circ\text{C}$ , Typical values are at  $V_{CC} = 3.3\text{ V}$ ,  $T_A = 25\text{ }^\circ\text{C}$  (unless otherwise noted)

| Symbol          | Parameter                                 | Test Condition   | Min  | Typ  | Max     | Unit          |
|-----------------|---|--|------|------|---------|---------------|
| $V_{IK}$        | Digital input clamp voltage               | $V_{CC} = 3.6\text{ V}$ , $I_I = -18\text{ mA}$  | -1.2 | -0.9 |         | V             |
| $I_{IN}$        | Digital input leakage current             | $V_{CC} = 3.6\text{ V}$ , $V_{IN} = 0\text{ to }3.6\text{ V}$                                  |      |      | $\pm 2$ | $\mu\text{A}$ |
| $I_{OZ}^{(3)}$  |   | $V_{CC} = 3.6\text{ V}$ , $V_O = 0\text{ V to }3.6\text{ V}$ , $V_I = 0\text{ V}$ , Switch OFF |      |      | $\pm 2$ | $\mu\text{A}$ |
| $I_{OFF}$       | Power off leakage current                 | $V_{CC} = 0\text{ V}$ , $V_{IN} = V_{CC}$ or GND, $V_{I/O} = 0\text{ V to }3.6\text{ V}$       |      |      | $\pm 8$ | $\mu\text{A}$ |
| $I_{CC}$        | Supply current                            | $V_{CC} = 3.6\text{ V}$ , $I_{I/O} = 0$ , Switch ON or OFF                                     |      | 70   | 130     | $\mu\text{A}$ |
| $C_{IN}$        | Digital input capacitance                 | $V_{CC} = 3.3\text{ V}$ , $V_{IN} = V_{CC}$ or GND   |      | 3    | 5       | pF            |
| $C_{I/O(OFF)}$  | OFF capacitance                           | $V_{CC} = 3.3\text{ V}$ , $V_{I/O} = 3.3\text{ V}$ or 0, $f = 10\text{ MHz}$ , Switch OFF      |      | 6    | 7       | pF            |
| $C_{I/O(ON)}$   | ON capacitance                            | $V_{CC} = 3.3\text{ V}$ , $V_{I/O} = 3.3\text{ V}$ or 0, $f = 10\text{ MHz}$ , Switch ON       |      | 9    | 10      | pF            |
| $r_{ON}$        | ON state resistance                       | $V_{CC} = 3.6\text{ V}$ , $V_I = V_{CC}$ , $I_O = -30\text{ mA}$                               |      | 13   | 19      | $\Omega$      |
|                 |   | $V_{CC} = 3.3\text{ V}$ , $V_I = 0.5\text{ V}$ , $I_O = -30\text{ mA}$                         |      | 10   |         | $\Omega$      |
| $\Delta r_{ON}$ | ON state resistance match between channel | $V_{CC} = 3\text{ V}$ , $V_I = 0\text{ to }V_{CC}$ , $I_O = -30\text{ mA}$                     |      | 2    | 2.5     | $\Omega$      |
| $r_{ON(Flat)}$  | ON state resistance flatness              | $V_{CC} = 3\text{ V}$ , $V_I = 1.5\text{ V}$ and $V_{CC}$ , $I_O = -30\text{ mA}$              |      | 4    | 6       | $\Omega$      |

### Notes:

- $V_{IN}$  and  $I_{IN}$  refer to control inputs.  $V_I$ ,  $V_O$ ,  $I_I$  and  $I_O$  refer to data pins.
- All typical values are at  $V_{CC} = 3.3\text{ V}$  (unless otherwise noted),  $T_A = 25\text{ }^\circ\text{C}$ .
- For I/O ports, the parameter  $I_{OZ}$  includes the input leakage current.

### Dynamic Characteristics

For Single 1:4 or Dual 1:2 configurations.  $T_A = -40\text{ }^{\circ}\text{C}$  to  $85\text{ }^{\circ}\text{C}$ , Typical values are at  $V_{CC} = 3.3\text{V} \pm 10\%$  and  $T_A = 25\text{ }^{\circ}\text{C}$  (unless otherwise noted)

| Symbol     | Parameter     | Test Condition                            | Typ | Unit |
|------------|---------------|---|-----|------|
| BW         | Bandwidth     | $R_L = 50\ \Omega$ , Switch ON            | 1.2 | GHz  |
| $O_{ISO}$  | OFF Isolation | $R_L = 50\ \Omega$ , $f = 250\text{ MHz}$ | -30 | dB   |
| $X_{TALK}$ | Crosstalk     | $R_L = 50\ \Omega$ , $f = 250\text{ MHz}$ | -35 | dB   |

### Switching Characteristics

For Single 1:4 or Dual 1:2 configurations. Over operating range,  $T_A = -40\text{ }^{\circ}\text{C}$  to  $85\text{ }^{\circ}\text{C}$ ,  $V_{CC} = 3.3\text{V} \pm 10\%$ ,  $GND = 0\text{ V}$  (unless otherwise noted)

| Symbol            | Parameter                      | Test Condition                           | Min | Typ | Max | Unit |
|-------------------|--------------------------------|--|-----|-----|-----|------|
| $t_{pd}^{(1)}$    |                                | $R_L = 50\ \Omega$ , $C_L = 2\text{ pF}$ |     | 50  |     | ps   |
| $t_{ON}$          | SAI/SAO/SBI/SBO to OUTAx/OUTBx | $R_L = 50\ \Omega$ , $C_L = 2\text{ pF}$ |     | 40  | 100 | ns   |
| $t_{OFF}$         | SAI/SAO/SBI/SBO to OUTAx/OUTBx | $R_L = 50\ \Omega$ , $C_L = 2\text{ pF}$ |     | 20  | 30  | ns   |
| $t_{sk(o)}^{(2)}$ |                                | $R_L = 50\ \Omega$ , $C_L = 2\text{ pF}$ |     | 40  |     | ps   |
| $t_{sk(p)}^{(3)}$ |                                | $R_L = 50\ \Omega$ , $C_L = 2\text{ pF}$ |     | 40  |     | ps   |

**Notes:**

1. The propagation delay is the calculated RC time constant of the typical ON-State resistance of the switch and the specified load capacitance when driven by an ideal voltage source (zero output impedance).
2. Output skew between center channel and any other channel.
3. Skew between opposite transitions of the same output ( $|t_{PHL} - t_{PLH}|$ ).

## DC Electrical Characteristics over Operating Range

For fan-out 1:2 configurations.  $T_A = -40\text{ }^{\circ}\text{C}$  to  $85\text{ }^{\circ}\text{C}$ , Typical values are at  $V_{CC} = 3.3\text{V}$ ,  $T_A = 25\text{ }^{\circ}\text{C}$  (unless otherwise noted)

| Symbol          | Parameter                                 | Test Condition   | Min  | Typ  | Max     | Unit          |
|-----------------|---|--|------|------|---------|---------------|
| $V_{IK}$        | Digital input clamp voltage               | $V_{CC} = 3.6\text{ V}$ , $I_I = -18\text{ mA}$  | -1.2 | -0.9 |         | V             |
| $I_{IN}$        | Digital input leakage current             | $V_{CC} = 3.6\text{ V}$ , $V_{IN} = 0\text{ to }3.6\text{ V}$                                  |      |      | $\pm 2$ | $\mu\text{A}$ |
| $I_{OZ}^{(3)}$  |   | $V_{CC} = 3.6\text{ V}$ , $V_O = 0\text{ V to }3.6\text{ V}$ , $V_I = 0\text{ V}$ , Switch OFF |      |      | $\pm 2$ | $\mu\text{A}$ |
| $I_{OFF}$       | Power off leakage current                 | $V_{CC} = 0\text{ V}$ , $V_{IN} = V_{CC}$ or GND, $V_{I/O} = 0\text{ V to }3.6\text{ V}$       |      |      | $\pm 8$ | $\mu\text{A}$ |
| $I_{CC}$        | Supply current                            | $V_{CC} = 3.6\text{ V}$ , $I_{I/O} = 0$ , Switch ON or OFF                                     |      | 70   | 130     | $\mu\text{A}$ |
| $C_{IN}$        | Digital input capacitance                 | $V_{CC} = 3.3\text{ V}$ , $V_{IN} = V_{CC}$ or GND   |      | 3    | 5       | pF            |
| $C_{I/O(OFF)}$  | OFF capacitance                           | $V_{CC} = 3.3\text{ V}$ , $V_{I/O} = 3.3\text{V}$ or 0, $f = 10\text{MHz}$ , Switch OFF        |      | 6    | 7       | pF            |
| $C_{I/O(ON)}$   | ON capacitance                            | $V_{CC} = 3.3\text{ V}$ , $V_{I/O} = 3.3\text{V}$ or 0, $f = 10\text{MHz}$ , Switch ON         |      | 12   | 13      | pF            |
| $r_{on}$        | ON state resistance                       | $V_{CC} = 3.6\text{ V}$ , $V_I = V_{CC}$ , $I_O = -30\text{ mA}$                               |      | 13   | 19      | $\Omega$      |
| $\Delta r_{on}$ | ON state resistance match between channel | $V_{CC} = 3\text{ V}$ , $V_I = 0\text{ to }V_{CC}$ , $I_O = -30\text{ mA}$                     |      | 2    | 2.5     | $\Omega$      |
| $r_{on(Flat)}$  | ON state resistance flatness              | $V_{CC} = 3\text{ V}$ , $V_I = 1.5\text{ V}$ and $V_{CC}$ , $I_O = -30\text{ mA}$              |      | 4    | 6       | $\Omega$      |

### Notes:

- $V_{IN}$  and  $I_{IN}$  refer to control inputs.  $V_I$ ,  $V_O$ ,  $I_I$  and  $I_O$  refer to data pins.
- All typical values are at  $V_{CC} = 3.3\text{V}$  (unless otherwise noted),  $T_A = 25\text{ }^{\circ}\text{C}$ .
- For I/O ports, the parameter  $I_{OZ}$  includes the input leakage current.

## Dynamic Characteristics

For fan-out 1:2 configurations.  $T_A = -40\text{ }^{\circ}\text{C}$  to  $85\text{ }^{\circ}\text{C}$ , Typical values are at  $V_{CC} = 3.3\text{V} \pm 10\%$  and  $T_A = 25\text{ }^{\circ}\text{C}$  (unless otherwise noted)

| Symbol     | Parameter     | Test Condition                            | Typ | Unit |
|------------|---------------|---|-----|------|
| BW         | Bandwidth     | $R_L = 50\ \Omega$ , Switch ON            | 500 | MHz  |
| $O_{ISO}$  | OFF Isolation | $R_L = 50\ \Omega$ , $f = 250\text{ MHz}$ | -30 | dB   |
| $X_{TALK}$ | Crosstalk     | $R_L = 50\ \Omega$ , $f = 250\text{ MHz}$ | -35 | dB   |

## Switching Characteristics

For fan-out 1:2 configuration. Over operating range,  $T_A = -40\text{ }^{\circ}\text{C}$  to  $85\text{ }^{\circ}\text{C}$ ,  $V_{CC} = 3.3\text{V} \pm 10\%$ ,  $GND = 0\text{V}$  (unless otherwise noted)

| Symbol            | Parameter                      | Test Condition                              | Min | Typ | Max | Unit |
|-------------------|--------------------------------|---|-----|-----|-----|------|
| $t_{pd}^{(1)}$    |                                | $R_L = 50\ \Omega$ , $C_L = 2\text{ pF}$    |     | 140 |     | ps   |
| $t_{ON}$          | SAI/SAO/SBI/SBO to OUTAx/OUTBx | $R = 50\ \Omega$ , $C_L = 2\text{ pF}$      |     | 40  | 100 | ns   |
| $t_{OFF}$         | SAI/SAO/SBI/SBO to OUTAx/OUTBx | $R_{LL} = 50\ \Omega$ , $C_L = 2\text{ pF}$ |     | 20  | 30  | ns   |
| $t_{sk(o)}^{(2)}$ |                                | $R_L = 50\ \Omega$ , $C_L = 2\text{ pF}$    |     | 60  |     | ps   |
| $t_{sk(p)}^{(3)}$ |                                | $R_L = 50\ \Omega$ , $C_L = 2\text{ pF}$    |     | 60  |     | ps   |

### Notes:

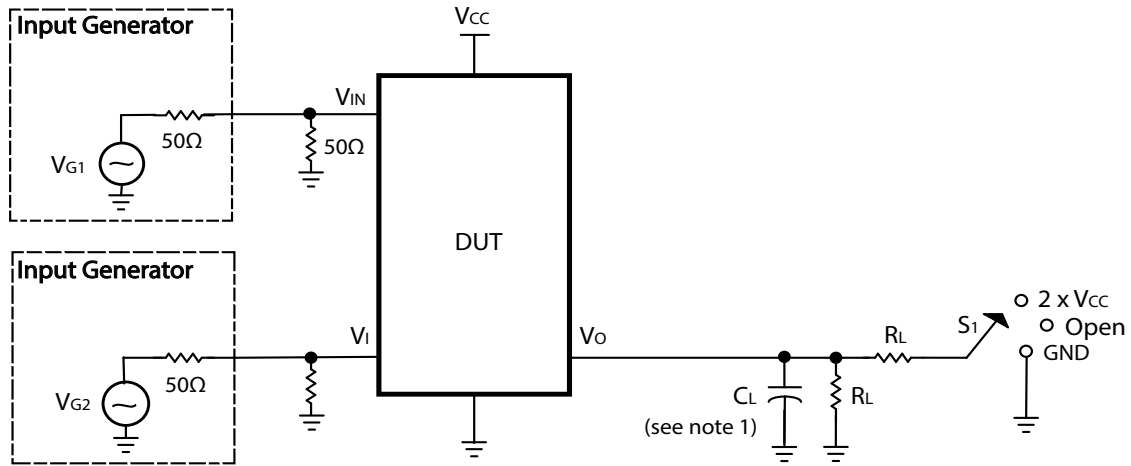
1. The propagation delay is the calculated RC time constant of the typical ON-State resistance of the switch and the specified load capacitance when driven by an ideal voltage source (zero output impedance).
2. Output skew between center channel and any other channel.
3. Skew between opposite transitions of the same output ( $|t_{PHL} - t_{PLH}|$ ).

## DC Electrical Characteristics over Operating Range

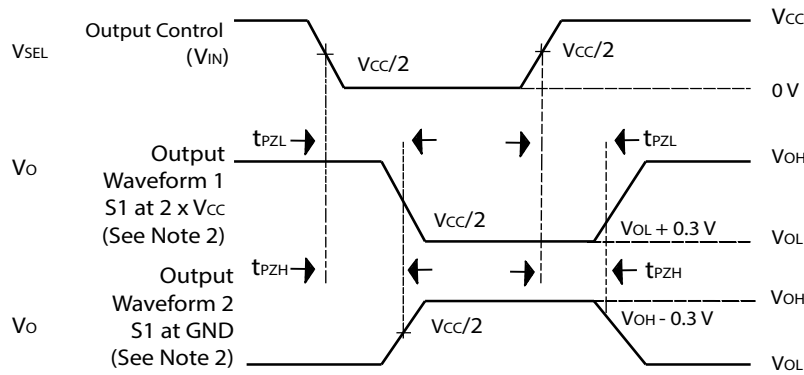
$T_A = -40\text{ }^{\circ}\text{C}$  to  $85\text{ }^{\circ}\text{C}$ , Typical values are at  $V_{CC} = 3.3\text{V}$ ,  $T_A = 25\text{ }^{\circ}\text{C}$

| Symbol   | Parameter                        | Test Condition     | Min          | Typ | Max      | Unit |
|----------|----------------------------------|--------------------|--------------|-----|----------|------|
| $V_{IO}$ | Analog I/O voltage               |                    | 0            |     | $V_{CC}$ | V    |
| $V_{IH}$ | High level input control voltage | ENx, SAx, SBx Pins | $0.75V_{CC}$ |     | $V_{CC}$ | V    |
| $V_{IL}$ | Low level input control voltage  | ENx, SAx, SBx Pins | 0            |     | 0.6      | V    |
| $V_{CC}$ | Supply voltage                   |                    | 3.0          |     | 3.6      | V    |

**Test Circuit For Electrical Characteristics**



| TEST                               | V <sub>CC</sub> | S1                  | R <sub>L</sub> | V <sub>in</sub> | C <sub>L</sub> | V <sub>Δ</sub> |
|------------------------------------|-----------------|---------------------|----------------|-----------------|----------------|----------------|
| t <sub>PLZ</sub> /t <sub>PZL</sub> | 3.3 V ± 0.3 V   | 2 x V <sub>CC</sub> | 50Ω            | GND             | 2 pF           | 0.3 V          |
| t <sub>PHZ</sub> /t <sub>PZH</sub> | 3.3 V ± 0.3 V   | GND                 | 50Ω            | V <sub>CC</sub> | 2pF            | 0.3 V          |



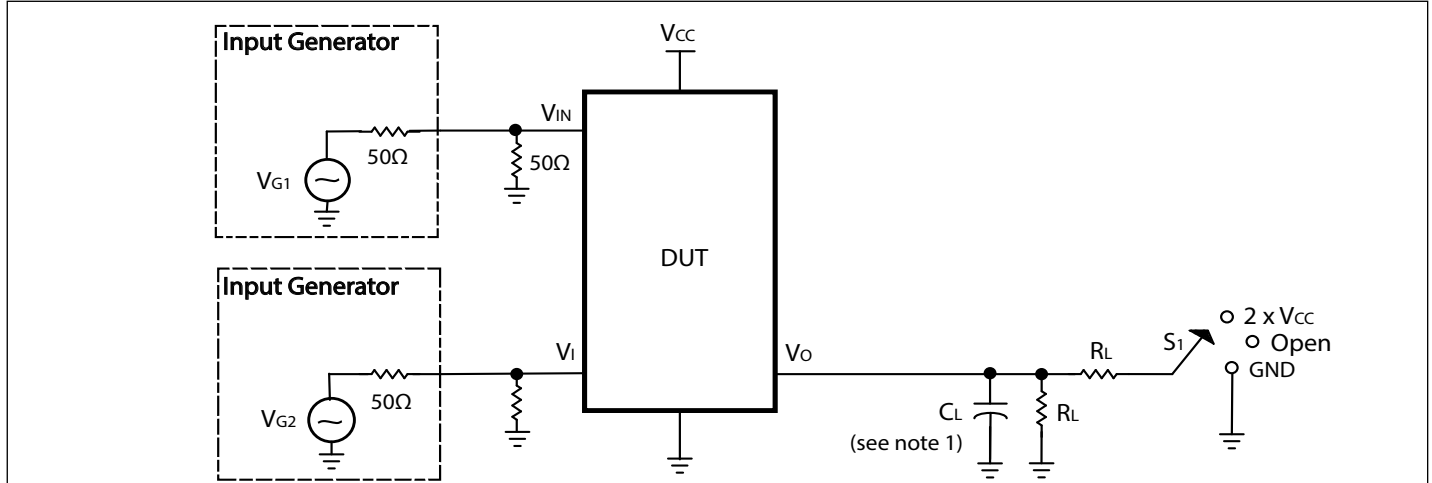
VOLTAGE WAVEFORMS  
ENABLE AND DISABLE TIME

**Notes:**

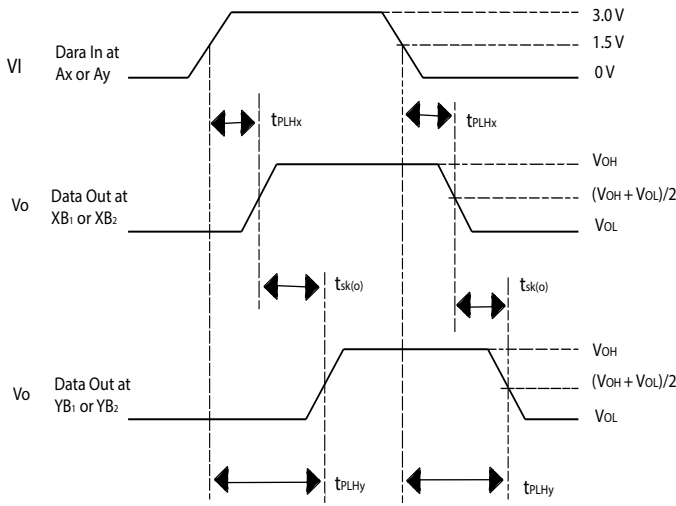
1. C<sub>L</sub> includes probe and jig capacitance.
2. Waveform 1 is for an output with internal conditions such that the output is low, except when disabled by the output control. Waveform 2 is for an output with internal conditions such that the output is high, except when disabled by the output control.
3. All input pulses are supplied by generators having the following characteristics: PRR ≤ 10 MHz, Z<sub>O</sub> = 50 Ω, t<sub>r</sub> ≤ 2.5 ns, t<sub>f</sub> ≤ 2.5 ns.
4. The outputs are measured one at a time, with one transition per measurement.
5. t<sub>PLZ</sub> and t<sub>PHZ</sub> are the same as t<sub>OFF</sub>.
6. t<sub>PZL</sub> and t<sub>PZH</sub> are the same as t<sub>ON</sub>.



**Test Circuit For Electrical Characteristics**

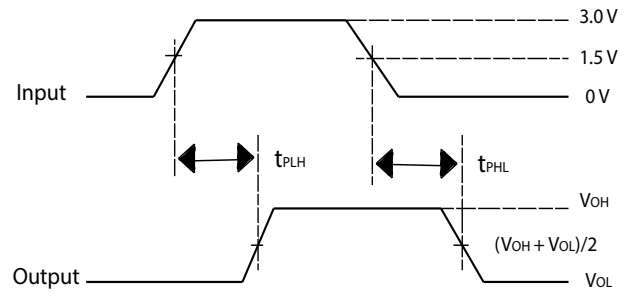


| TEST               | V <sub>CC</sub> | S1   | R <sub>L</sub> | V <sub>in</sub>        | C <sub>L</sub> |
|--------------------|-----------------|------|----------------|------------------------|----------------|
| t <sub>sk(o)</sub> | 3.3 V ± 0.3 V   | Open | 50Ω            | V <sub>CC</sub> or GND | 2 pF           |
| t <sub>sk(p)</sub> | 3.3 V ± 0.3 V   | Open | 50Ω            | V <sub>CC</sub> or GND | 2pF            |



$t_{sk(o)} = t_{PLHy} - t_{PLHx} \text{ OR } t_{PHLy} - t_{PHLx}$

VOLTAGE WAVEFORMS  
OUTPUT SKEW [t<sub>sk(o)</sub>]



$t_{sk(p)} = t_{PHL} - t_{PLH}$

VOLTAGE WAVEFORMS  
PULSE SKEW [t<sub>sk(p)</sub>]

**Notes:**

1. C<sub>L</sub> includes probe and jig capacitance.
2. All input pulses are supplied by generators having the following characteristics: PRR ≤ 10 MHz, Z<sub>O</sub> = 50 Ω, t<sub>r</sub> ≤ 2.5 ns, t<sub>f</sub> ≤ 2.5 ns.
3. The outputs are measured one at a time, with one transition per measurement.

**Packaging Mechanical: 20-pin TQFN (ZNA)**

| SYMBOLS | MIN.       | NOM. | MAX. |
|---------|------------|------|------|
| A       | 0.70       | 0.75 | 0.80 |
| A1      | 0.00       | 0.02 | 0.05 |
| A3      | 0.203 REF. |      |      |
| b       | 0.15       | 0.20 | 0.25 |
| D       | 2.95       | 3.00 | 3.05 |
| E       | 2.95       | 3.00 | 3.05 |
| D2      | 1.55       | 1.65 | 1.75 |
| E2      | 1.55       | 1.65 | 1.75 |
| L       | 0.30       | 0.40 | 0.50 |
| e       | 0.40 BSC   |      |      |

**Notes:**  
 1. All dimensions are in mm. Angles in degrees.  
 2. Refer JEDEC MO-220.  
 3. Recommended land pattern is for reference only.

**PERICOM**  
Enabling Serial Connectivity

DATE: 09/19/13

DESCRIPTION: 20-contact, Thin Fine Pitch Quad Flat No lead Package (TQFN)

PACKAGE CODE: ZNA

DOCUMENT CONTROL #: PD-2169

REVISION: --

13-0240

**Ordering Information**

| Ordering Code  | Packaging Code | Package Description  |
|----------------|----------------|--|
| PI3DBS3224ZNAE | ZNA            | 20-contact, Thin Fine Pitch Quad Flat No Lead Package (TQFN) |

**Notes:**

- Thermal characteristics can be found on the company web site at [www.pericom.com/packaging/](http://www.pericom.com/packaging/)
- "E" denotes Pb-free and Green
- Adding an "X" at the end of the ordering code denotes tape and reel packaging

# Mouser Electronics

Authorized Distributor

Click to View Pricing, Inventory, Delivery & Lifecycle Information:

[Diodes Incorporated:](#)

[PI3DBS3224ZNAEX](#)



Компания «ЭлектроПласт» предлагает заключение долгосрочных отношений при поставках импортных электронных компонентов на взаимовыгодных условиях!

Наши преимущества:

- Оперативные поставки широкого спектра электронных компонентов отечественного и импортного производства напрямую от производителей и с крупнейших мировых складов;
- Поставка более 17-ти миллионов наименований электронных компонентов;
- Поставка сложных, дефицитных, либо снятых с производства позиций;
- Оперативные сроки поставки под заказ (от 5 рабочих дней);
- Экспресс доставка в любую точку России;
- Техническая поддержка проекта, помощь в подборе аналогов, поставка прототипов;
- Система менеджмента качества сертифицирована по Международному стандарту ISO 9001;
- Лицензия ФСБ на осуществление работ с использованием сведений, составляющих государственную тайну;
- Поставка специализированных компонентов (Xilinx, Altera, Analog Devices, Intersil, Interpoint, Microsemi, Aeroflex, Peregrine, Syfer, Eurofarad, Texas Instrument, Miteq, Cobham, E2V, MA-COM, Hittite, Mini-Circuits, General Dynamics и др.);

Помимо этого, одним из направлений компании «ЭлектроПласт» является направление «Источники питания». Мы предлагаем Вам помощь Конструкторского отдела:

- Подбор оптимального решения, техническое обоснование при выборе компонента;
- Подбор аналогов;
- Консультации по применению компонента;
- Поставка образцов и прототипов;
- Техническая поддержка проекта;
- Защита от снятия компонента с производства.



#### Как с нами связаться

**Телефон:** 8 (812) 309 58 32 (многоканальный)

**Факс:** 8 (812) 320-02-42

**Электронная почта:** [org@eplast1.ru](mailto:org@eplast1.ru)

**Адрес:** 198099, г. Санкт-Петербург, ул. Калинина, дом 2, корпус 4, литера А.