

DS96F172MQML,DS96F174MQML

DS96F172MQML/DS96F174MQML EIA-485/EIA-422 Quad Differential Drivers



Literature Number: SNOSAS8

EIA-485/EIA-422 Quad Differential Drivers

General Description

The DS96F172 and the DS96F174 are high speed quad differential line drivers designed to meet EIA-485 Standards. The DS96F172 and the DS96F174 offer improved performance due to the use of L-FAST bipolar technology. The use of LFAST technology allows the DS96F172 and DS96F174 to operate at higher speeds while minimizing power consumption.

The DS96F172 and the DS96F174 have TRI-STATE® outputs and are optimized for balanced multipoint data bus transmission at rates up to 15 Mbps. The drivers have wide positive and negative common mode range for multipoint applications in noisy environments. Positive and negative current-limiting is provided which protects the drivers from line fault conditions over a +12V to -7.0V common mode range. A thermal shutdown feature is also provided. The DS96F172 features an active high and active low Enable, common to all four drivers. The DS96F174 features separate active high Enables for each driver pair.

Features

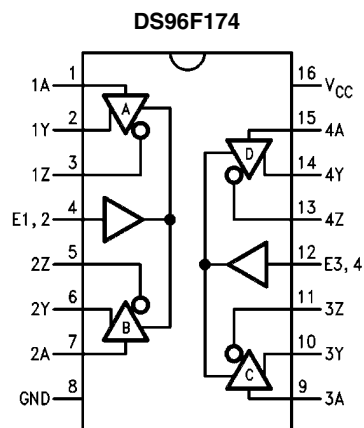
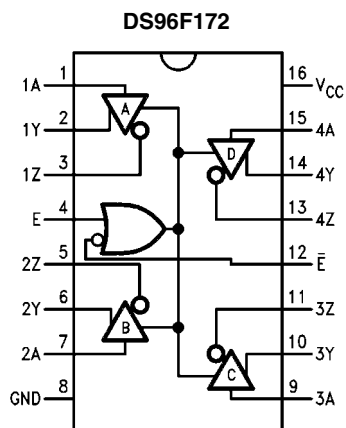
- Meets EIA-485 and EIA-422 standards
- Monotonic differential output switching
- TRI-STATE outputs
- Designed for multipoint bus transmission
- Common mode output voltage range: -7.0V to +12V
- Operates from single +5.0V supply
- Reduced power consumption
- Thermal shutdown protection
- DS96F172 and DS96F174 are lead and function compatible with the SN75172/174 or the AM26LS31/MC3487

Ordering Information

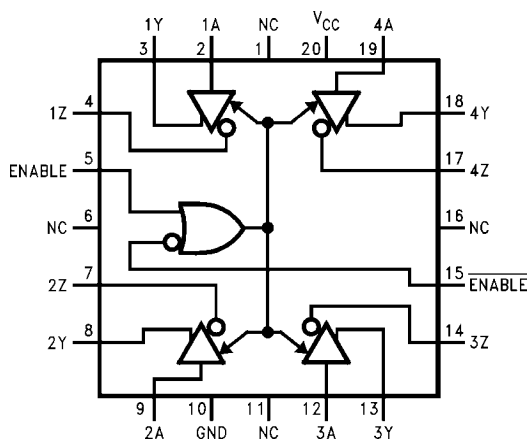
NS Part Number	SMD Part Number	NS Package Number	Package Description
DS96F172ME/883	5962-9076501M2A	E20A	20LD Leadless Chip Carrier
DS96F172MJ/883	5962-9076501MEA	J16A	16LD Ceramic Dip
DS96F174ME/883	5962-9076502M2A	E20A	20LD Leadless Chip Carrier
DS96F174MJ/883	5962-9076502MEA	J16A	16LD Ceramic Dip
DS96F174MJ-QMLV	5962-9076502VEA	J16A	16LD Ceramic Dip

Connection Diagrams

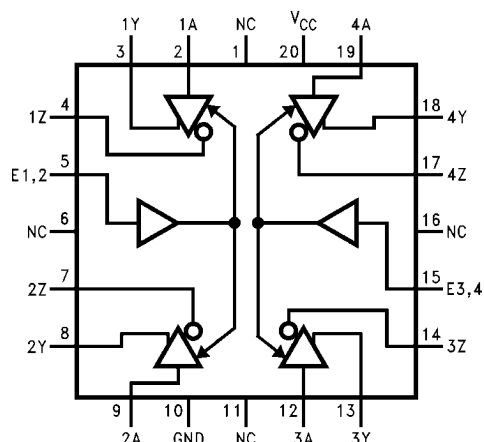
16-Lead Ceramic Dual-In-Line Package (NS Package Number J16A)



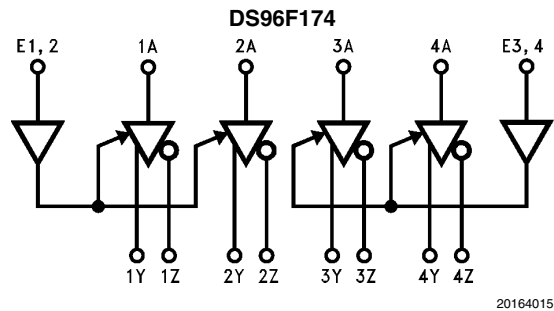
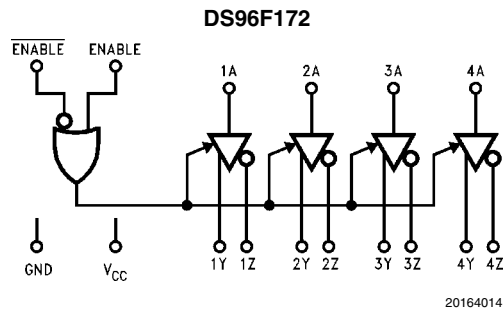
20-Lead Ceramic Leadless Chip Carrier (NS Package Number E20A)



NC = No connection



Logic Diagrams



Function Tables

DS96F172

(Each Driver)

Input	Enable		Outputs	
A	E	\bar{E}	Y	Z
H	H	X	H	L
L	H	X	L	H
H	X	L	H	L
L	X	L	L	H
X	L	H	Z	Z

DS96F174

Input	Enable	Outputs	
A	E	Y	Z
H	H	H	L
L	H	L	H
X	L	Z	Z

H = High Level
L = Low Level
X = Don't Care
Z = High Impedance (Off)

Absolute Maximum Ratings *(Note 1)*

Storage Temperature Range (T_{Sig})	$-65^{\circ}\text{C} \leq T_A \leq +175^{\circ}\text{C}$
Lead Temperature (Soldering, 60 sec.)	300°C
Maximum Package Power Dissipation at 25°C <i>(Note 2)</i>	
Ceramic LCC (E)	2,000 mW
Ceramic DIP (J)	1,800 mW
Ceramic Flatpak (W)	1,000 mW
Supply Voltage	7.0V
Enable Input Voltage	5.5V

Recommended Operating Conditions

	Min	Max	Units
Supply Voltage (V_{CC})	4.50	5.50	V
Common Mode Output Voltage (V_{OC})	-7.0	+12.0	V
Output Current High (I_{OH})		-60	mA
Output Current Low (I_{OL})		60	mA
Operating Temperature (T_A)	-55	+125	°C

Quality Conformance Inspection

Mil-Std-883, Method 5005 - Group A

Subgroup	Description	Temp (°C)
1	Static tests at	+25
2	Static tests at	+125
3	Static tests at	-55
4	Dynamic tests at	+25
5	Dynamic tests at	+125
6	Dynamic tests at	-55
7	Functional tests at	+25
8A	Functional tests at	+125
8B	Functional tests at	-55
9	Switching tests at	+25
10	Switching tests at	+125
11	Switching tests at	-55
12	Settling time at	+25
13	Settling time at	+125
14	Settling time at	-55

DS96F172/DS96F174 Electrical Characteristics

AC/DC Parameters (Note 5)

The following conditions apply, unless otherwise specified.

DC: $V_{CC} = 5.5V$

AC: $V_{CC} = 5.0V$

Symbol	Parameter	Conditions	Notes	Min	Max	Unit	Sub-groups
V_{IL}	Logical 0 Input Voltage				0.8	V	1
					0.7	V	2, 3
V_{IH}	Logical 1 Input Voltage			2.0		V	1, 2, 3
V_{IC}	Input Clamp Voltage	$I = -18mA$		-1.5		V	1, 2, 3
V_{OD1}	Differential Output Voltage	$I_O = 0mA$			6.0	V	1, 2, 3
V_{OD2}	Differential Output Voltage	$V_{CC} = 4.5V, R_L = 54\Omega$ Figure 1		1.5		V	1, 2
			(Note 3)	1.2		V	3
V_{OD2}	Differential Output Voltage	$V_{CC} = 4.5V, R_L = 100\Omega$ Figure 1		2.0		V	1, 2, 3
ΔV_{OD1}	Change In Magnitude of V_{OD2}	$V_{CC} = 4.5V, R_L = 54\Omega$	(Note 6)	-200	200	mV	1, 2
			(Note 3, Note 6)	-400	400	mV	3
ΔV_{OD2}	Change In Magnitude of V_{OD2}	$V_{CC} = 4.5V, R_L = 100\Omega$	(Note 6)	-200	200	mV	1, 2
			(Note 3, Note 6)	-400	400	mV	3
V_{OC}	Common Mode Output Voltage	$R_L = 54\Omega$ Figure 1			3.0	V	1, 2, 3
V_{OC}	Common Mode Output Voltage	$R_L = 100\Omega$ Figure 1			3.0	V	1, 2, 3
ΔV_{OC}	Change in Magnitude of V_{OC}	$V_{CC} = 4.5V, R_L = 54\Omega$ Figure 1	(Note 6)	-200	200	mV	1, 2, 3
ΔV_{OC}	Change in Magnitude of V_{OC}	$V_{CC} = 4.5V, R_L = 100\Omega$ Figure 1	(Note 7)	-200	200	mV	1, 2, 3
I_O	Output Current With Power Off	$V_{CC} = 0V, V_O = -7V$ to 12V		-50	50	μA	1, 2, 3
I_{OZ}	High Impedance State Output Current	$V_O = -7V$ to 12V		-50	50	μA	1, 2, 3
I_{IH}	Logical 1 Input Current	$V_I = 2.4V$			20	μA	1, 2, 3
I_{IL}	Logical 0 Input Current	$V_I = 0.4V$		-50		μA	1, 2, 3
I_{CC}	Supply Current	Outputs Enabled			50	mA	1, 2, 3
I_{CCX}	Supply Current	Outputs Disabled			30	mA	1, 2, 3
I_{OS1}	Short Circuit Output Current	$V_O = -7V$	(Note 4)	-250		mA	1, 2, 3
I_{OS2}	Short Circuit Output Current	$V_O = 0V$	(Note 4)	-150		mA	1, 2, 3
I_{OS3}	Short Circuit Output Current	$V_O = V_{CC}$	(Note 4)		150	mA	1, 2, 3
I_{OS4}	Short Circuit Output Current	$V_O = 12V$	(Note 4)		250	mA	1, 2, 3
t_{PLH}	Propagation Delay Lo to Hi level	$R_L = 27\Omega, C_L = 15pF$ Figure 4			25	ns	10, 11
					16	ns	9
t_{PHL}	Propagation Delay Hi to Low Level	$R_L = 27\Omega, C_L = 15pF$ Figure 4			25	ns	10, 11
					16	ns	9
SKEW	Output to Output Delay Time	$R_L = 60\Omega$			10	ns	10, 11
					4	ns	9
t_{LZ}	Output Disable Time From Low Level	$R_L = 110\Omega, C_L = 50pF$ Figure 6			40	ns	10, 11
					25	ns	9

Symbol	Parameter	Conditions	Notes	Min	Max	Unit	Sub-groups
t_{HZ}	Output Disable Time From High Level	$R_L = 110\Omega$, $C_L = 50\text{pF}$ Figure 5			80	ns	10, 11
					30	ns	9
t_{ZL}	Output Enable Time to Low Level	$R_L = 110\Omega$, $C_L = 50\text{pF}$ Figure 6			100	ns	10, 11
					40	ns	9
t_{ZH}	Output Enable Time to High Level	$R_L = 110\Omega$, $C_L = 50\text{pF}$ Figure 4			40	ns	10, 11
					32	ns	9
t_{DD}	Differential Output Delay Time	$R_L = 60\Omega$, $C_L = 15\text{pF}$ Figure 3			30	ns	10, 11
					22	ns	9
t_{TD}	Differential Output Transition Time	$R_L = 60\Omega$, $C_L = 15\text{pF}$ Figure 3			40	ns	10, 11
					22	ns	9

Note 1: Absolute Maximum Ratings indicate limits beyond which damage to the device may occur. Operating Ratings indicate conditions for which the device is functional, but do not guarantee specific performance limits. For guaranteed specifications and test conditions, see the Electrical Characteristics. The guaranteed specifications apply only for the test conditions listed. Some performance characteristics may degrade when the device is not operated under the listed test conditions.

Note 2: Above $T_A = 25^\circ\text{C}$, derate "E" package 13.3, "J" package 12.5, "W" package 7.1 mW/ $^\circ\text{C}$

Note 3: -55°C limit exceeds EIA standard RS-485 specification

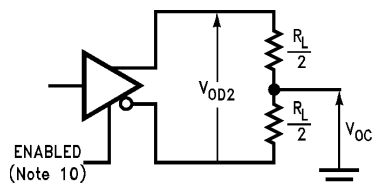
Note 4: 0.2 μF cap is connected between the output and Gnd to reduce oscillation.

Note 5: All currents into the device pins are positive; all currents out of the device pins are negative. All voltages are reference to ground unless otherwise specified.

Note 6: ΔV_{OD} is the change in magnitude of V_{OD} , that occurs when the input is changed between high and low levels.

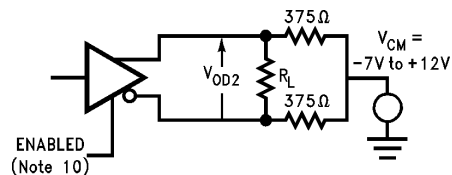
Note 7: ΔV_{OC} is the change in magnitude of the V_{OC} that occurs when the input is changed between high and low levels.

Parameter Measurement Information



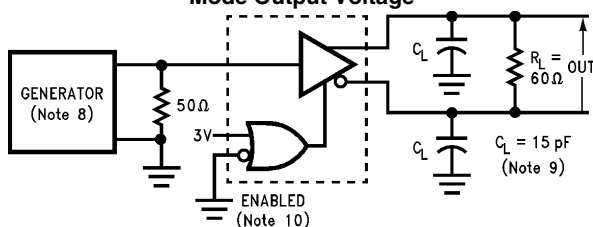
20164003

FIGURE 1. Differential and Common Mode Output Voltage



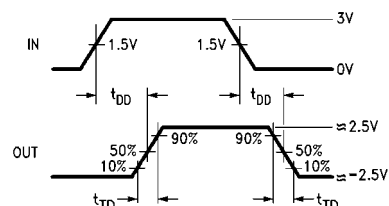
20164013

FIGURE 2. Differential Output Voltage with Varying Common Mode Voltage

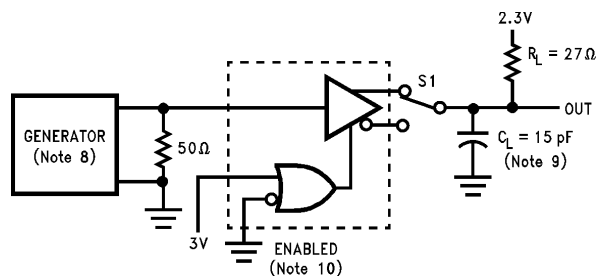


20164004

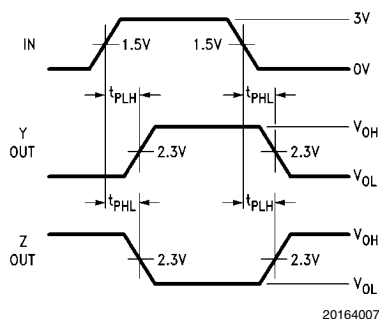
FIGURE 3. Differential Output Delay and Transition Times



20164005

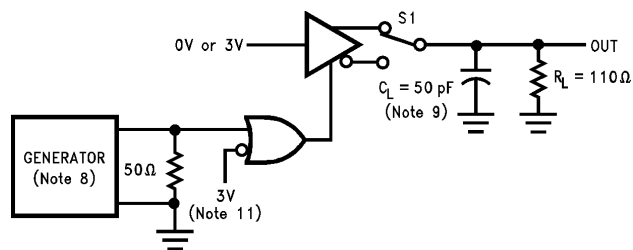


20164006

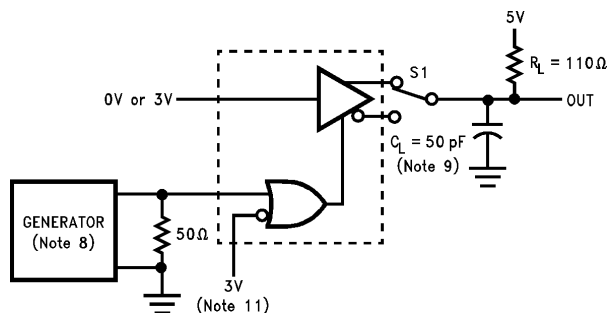
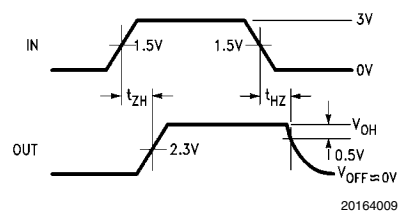


20164007

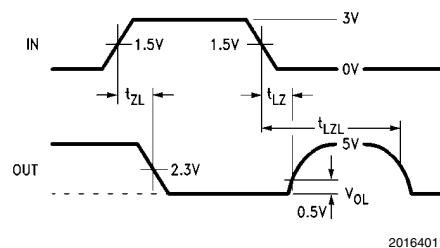
FIGURE 4. Propagation Delay Times



20164008
FIGURE 5. t_{ZH} and t_{HZ}



20164010
FIGURE 6. t_{ZL} , t_{LZ} , t_{LZL}



Note 8: The input pulse is supplied by a generator having the following characteristics: $f = 1.0 \text{ MHz}$, duty cycle = 50%, $t_r \leq 5.0 \text{ ns}$, $t_f \leq 5.0 \text{ ns}$, $Z_O = 50\Omega$.

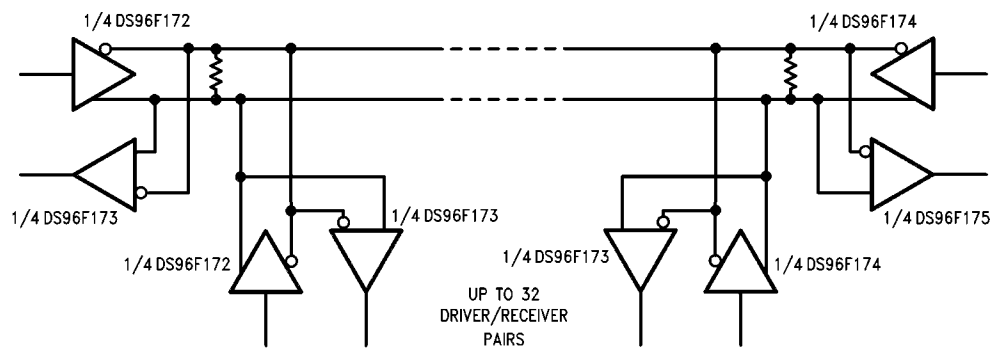
Note 9: C_L includes probe and jig capacitance.

Note 10: DS96F172 with active high and active low Enables is shown. DS96F174 has active high Enable only.

Note 11: To test the active low Enable \bar{E} of DS96F172 ground \bar{E} and apply an inverted waveform to \bar{E} . DS96F174 has active high Enable only.

Note 12: For more information see Application Bulletin, Contact Product Marketing.

Typical Application



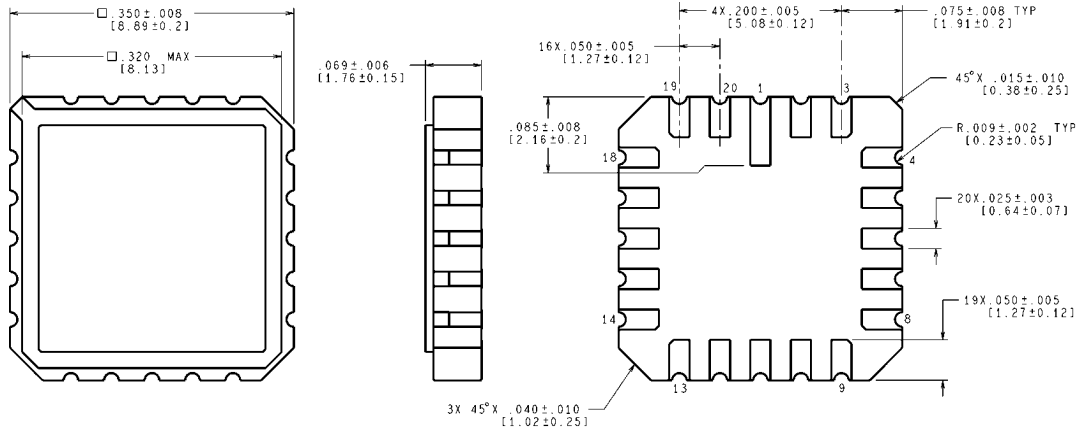
20164012

The line length should be terminated at both ends in its characteristic impedance.
Stub lengths off the main line should be kept as short as possible.

Revision History

Released	Revision	Section	Changes
8-Apr-11	A	New Release, Corporate format	2 MDS data sheets converted into one Corp. data sheet format. MNDS96F172M-X Rev 1A0 & MNDS96F174M-X Rev 1B0 will be archived.

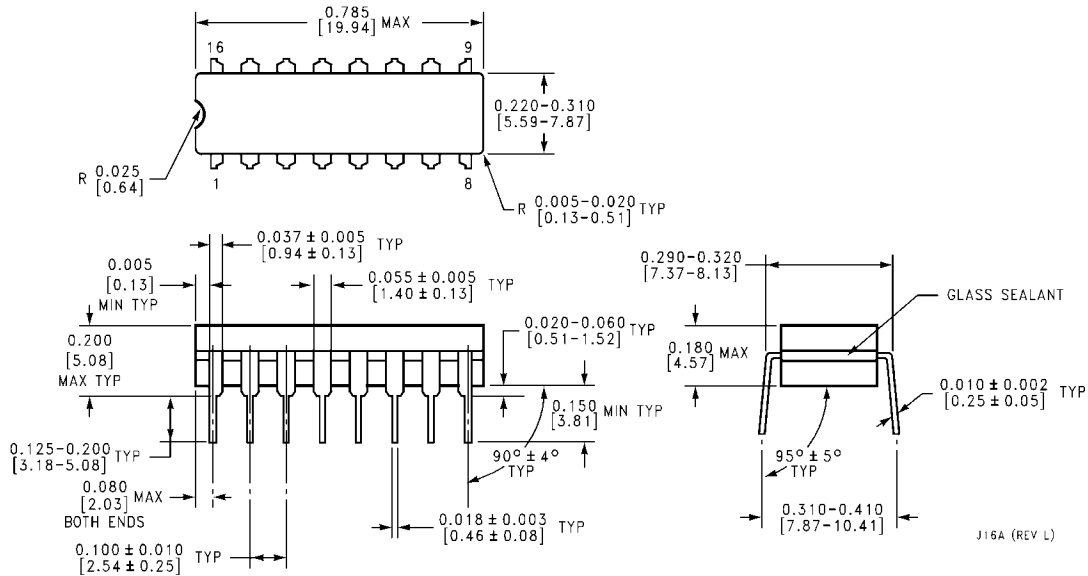
Physical Dimensions inches (millimeters) unless otherwise noted



CONTROLLING DIMENSION IS INCH
VALUES IN [] ARE MILLIMETERS

E20A (Rev F)

20-Lead Ceramic Leadless Chip Carrier (E) NS Package Number E20A



16-Lead Ceramic Dual-In-Line Package (J) NS Package Number J16A

J16A (REV L)

Notes

For more National Semiconductor product information and proven design tools, visit the following Web sites at:
www.national.com

Products		Design Support	
Amplifiers	www.national.com/amplifiers	WEBENCH® Tools	www.national.com/webench
Audio	www.national.com/audio	App Notes	www.national.com/appnotes
Clock and Timing	www.national.com/timing	Reference Designs	www.national.com/refdesigns
Data Converters	www.national.com/adc	Samples	www.national.com/samples
Interface	www.national.com/interface	Eval Boards	www.national.com/evalboards
LVDS	www.national.com/lvds	Packaging	www.national.com/packaging
Power Management	www.national.com/power	Green Compliance	www.national.com/quality/green
Switching Regulators	www.national.com/switchers	Distributors	www.national.com/contacts
LDOs	www.national.com/ldo	Quality and Reliability	www.national.com/quality
LED Lighting	www.national.com/led	Feedback/Support	www.national.com/feedback
Voltage References	www.national.com/vref	Design Made Easy	www.national.com/easy
PowerWise® Solutions	www.national.com/powerwise	Applications & Markets	www.national.com/solutions
Serial Digital Interface (SDI)	www.national.com/sdi	Mil/Aero	www.national.com/milaero
Temperature Sensors	www.national.com/tempsensors	SolarMagic™	www.national.com/solarmagic
PLL/VCO	www.national.com/wireless	PowerWise® Design University	www.national.com/training

THE CONTENTS OF THIS DOCUMENT ARE PROVIDED IN CONNECTION WITH NATIONAL SEMICONDUCTOR CORPORATION ("NATIONAL") PRODUCTS. NATIONAL MAKES NO REPRESENTATIONS OR WARRANTIES WITH RESPECT TO THE ACCURACY OR COMPLETENESS OF THE CONTENTS OF THIS PUBLICATION AND RESERVES THE RIGHT TO MAKE CHANGES TO SPECIFICATIONS AND PRODUCT DESCRIPTIONS AT ANY TIME WITHOUT NOTICE. NO LICENSE, WHETHER EXPRESS, IMPLIED, ARISING BY ESTOPPEL OR OTHERWISE, TO ANY INTELLECTUAL PROPERTY RIGHTS IS GRANTED BY THIS DOCUMENT.

TESTING AND OTHER QUALITY CONTROLS ARE USED TO THE EXTENT NATIONAL DEEMS NECESSARY TO SUPPORT NATIONAL'S PRODUCT WARRANTY. EXCEPT WHERE MANDATED BY GOVERNMENT REQUIREMENTS, TESTING OF ALL PARAMETERS OF EACH PRODUCT IS NOT NECESSARILY PERFORMED. NATIONAL ASSUMES NO LIABILITY FOR APPLICATIONS ASSISTANCE OR BUYER PRODUCT DESIGN. BUYERS ARE RESPONSIBLE FOR THEIR PRODUCTS AND APPLICATIONS USING NATIONAL COMPONENTS. PRIOR TO USING OR DISTRIBUTING ANY PRODUCTS THAT INCLUDE NATIONAL COMPONENTS, BUYERS SHOULD PROVIDE ADEQUATE DESIGN, TESTING AND OPERATING SAFEGUARDS.

EXCEPT AS PROVIDED IN NATIONAL'S TERMS AND CONDITIONS OF SALE FOR SUCH PRODUCTS, NATIONAL ASSUMES NO LIABILITY WHATSOEVER, AND NATIONAL DISCLAIMS ANY EXPRESS OR IMPLIED WARRANTY RELATING TO THE SALE AND/OR USE OF NATIONAL PRODUCTS INCLUDING LIABILITY OR WARRANTIES RELATING TO FITNESS FOR A PARTICULAR PURPOSE, MERCHANTABILITY, OR INFRINGEMENT OF ANY PATENT, COPYRIGHT OR OTHER INTELLECTUAL PROPERTY RIGHT.

LIFE SUPPORT POLICY

NATIONAL'S PRODUCTS ARE NOT AUTHORIZED FOR USE AS CRITICAL COMPONENTS IN LIFE SUPPORT DEVICES OR SYSTEMS WITHOUT THE EXPRESS PRIOR WRITTEN APPROVAL OF THE CHIEF EXECUTIVE OFFICER AND GENERAL COUNSEL OF NATIONAL SEMICONDUCTOR CORPORATION. As used herein:

Life support devices or systems are devices which (a) are intended for surgical implant into the body, or (b) support or sustain life and whose failure to perform when properly used in accordance with instructions for use provided in the labeling can be reasonably expected to result in a significant injury to the user. A critical component is any component in a life support device or system whose failure to perform can be reasonably expected to cause the failure of the life support device or system or to affect its safety or effectiveness.

National Semiconductor and the National Semiconductor logo are registered trademarks of National Semiconductor Corporation. All other brand or product names may be trademarks or registered trademarks of their respective holders.

Copyright© 2011 National Semiconductor Corporation

For the most current product information visit us at www.national.com



**National Semiconductor
Americas Technical
Support Center**
Email: support@nsc.com
Tel: 1-800-272-9959

**National Semiconductor Europe
Technical Support Center**
Email: europe.support@nsc.com

**National Semiconductor Asia
Pacific Technical Support Center**
Email: ap.support@nsc.com

**National Semiconductor Japan
Technical Support Center**
Email: jpn.feedback@nsc.com

IMPORTANT NOTICE

Texas Instruments Incorporated and its subsidiaries (TI) reserve the right to make corrections, modifications, enhancements, improvements, and other changes to its products and services at any time and to discontinue any product or service without notice. Customers should obtain the latest relevant information before placing orders and should verify that such information is current and complete. All products are sold subject to TI's terms and conditions of sale supplied at the time of order acknowledgment.

TI warrants performance of its hardware products to the specifications applicable at the time of sale in accordance with TI's standard warranty. Testing and other quality control techniques are used to the extent TI deems necessary to support this warranty. Except where mandated by government requirements, testing of all parameters of each product is not necessarily performed.

TI assumes no liability for applications assistance or customer product design. Customers are responsible for their products and applications using TI components. To minimize the risks associated with customer products and applications, customers should provide adequate design and operating safeguards.

TI does not warrant or represent that any license, either express or implied, is granted under any TI patent right, copyright, mask work right, or other TI intellectual property right relating to any combination, machine, or process in which TI products or services are used. Information published by TI regarding third-party products or services does not constitute a license from TI to use such products or services or a warranty or endorsement thereof. Use of such information may require a license from a third party under the patents or other intellectual property of the third party, or a license from TI under the patents or other intellectual property of TI.

Reproduction of TI information in TI data books or data sheets is permissible only if reproduction is without alteration and is accompanied by all associated warranties, conditions, limitations, and notices. Reproduction of this information with alteration is an unfair and deceptive business practice. TI is not responsible or liable for such altered documentation. Information of third parties may be subject to additional restrictions.

Resale of TI products or services with statements different from or beyond the parameters stated by TI for that product or service voids all express and any implied warranties for the associated TI product or service and is an unfair and deceptive business practice. TI is not responsible or liable for any such statements.

TI products are not authorized for use in safety-critical applications (such as life support) where a failure of the TI product would reasonably be expected to cause severe personal injury or death, unless officers of the parties have executed an agreement specifically governing such use. Buyers represent that they have all necessary expertise in the safety and regulatory ramifications of their applications, and acknowledge and agree that they are solely responsible for all legal, regulatory and safety-related requirements concerning their products and any use of TI products in such safety-critical applications, notwithstanding any applications-related information or support that may be provided by TI. Further, Buyers must fully indemnify TI and its representatives against any damages arising out of the use of TI products in such safety-critical applications.

TI products are neither designed nor intended for use in military/aerospace applications or environments unless the TI products are specifically designated by TI as military-grade or "enhanced plastic." Only products designated by TI as military-grade meet military specifications. Buyers acknowledge and agree that any such use of TI products which TI has not designated as military-grade is solely at the Buyer's risk, and that they are solely responsible for compliance with all legal and regulatory requirements in connection with such use.

TI products are neither designed nor intended for use in automotive applications or environments unless the specific TI products are designated by TI as compliant with ISO/TS 16949 requirements. Buyers acknowledge and agree that, if they use any non-designated products in automotive applications, TI will not be responsible for any failure to meet such requirements.

Following are URLs where you can obtain information on other Texas Instruments products and application solutions:

Products

Audio	www.ti.com/audio
Amplifiers	amplifier.ti.com
Data Converters	dataconverter.ti.com
DLP® Products	www.dlp.com
DSP	dsp.ti.com
Clocks and Timers	www.ti.com/clocks
Interface	interface.ti.com
Logic	logic.ti.com
Power Mgmt	power.ti.com
Microcontrollers	microcontroller.ti.com
RFID	www.ti-rfid.com
OMAP Mobile Processors	www.ti.com/omap
Wireless Connectivity	www.ti.com/wirelessconnectivity

Applications

Communications and Telecom	www.ti.com/communications
Computers and Peripherals	www.ti.com/computers
Consumer Electronics	www.ti.com/consumer-apps
Energy and Lighting	www.ti.com/energy
Industrial	www.ti.com/industrial
Medical	www.ti.com/medical
Security	www.ti.com/security
Space, Avionics and Defense	www.ti.com/space-avionics-defense
Transportation and Automotive	www.ti.com/automotive
Video and Imaging	www.ti.com/video

TI E2E Community Home Page

e2e.ti.com

Mailing Address: Texas Instruments, Post Office Box 655303, Dallas, Texas 75265
Copyright © 2011, Texas Instruments Incorporated



Компания «ЭлектроПласт» предлагает заключение долгосрочных отношений при поставках импортных электронных компонентов на взаимовыгодных условиях!

Наши преимущества:

- Оперативные поставки широкого спектра электронных компонентов отечественного и импортного производства напрямую от производителей и с крупнейших мировых складов;
- Поставка более 17-ти миллионов наименований электронных компонентов;
- Поставка сложных, дефицитных, либо снятых с производства позиций;
- Оперативные сроки поставки под заказ (от 5 рабочих дней);
- Экспресс доставка в любую точку России;
- Техническая поддержка проекта, помощь в подборе аналогов, поставка прототипов;
- Система менеджмента качества сертифицирована по Международному стандарту ISO 9001;
- Лицензия ФСБ на осуществление работ с использованием сведений, составляющих государственную тайну;
- Поставка специализированных компонентов (Xilinx, Altera, Analog Devices, Intersil, Interpoint, Microsemi, Aeroflex, Peregrine, Syfer, Eurofarad, Texas Instrument, Miteq, Cobham, E2V, MA-COM, Hittite, Mini-Circuits, General Dynamics и др.);

Помимо этого, одним из направлений компании «ЭлектроПласт» является направление «Источники питания». Мы предлагаем Вам помощь Конструкторского отдела:

- Подбор оптимального решения, техническое обоснование при выборе компонента;
- Подбор аналогов;
- Консультации по применению компонента;
- Поставка образцов и прототипов;
- Техническая поддержка проекта;
- Защита от снятия компонента с производства.



Как с нами связаться

Телефон: 8 (812) 309 58 32 (многоканальный)

Факс: 8 (812) 320-02-42

Электронная почта: org@eplast1.ru

Адрес: 198099, г. Санкт-Петербург, ул. Калинина, дом 2, корпус 4, литера А.