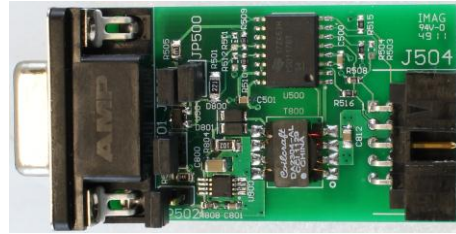


## FEATURES

- PROFIBUS Protocol (SoM Dependent)
  - Certified by PI International
  - Electrically Isolated Interface
  - Up to 6Mbaud operation
- RS485 Protocol
  - Electrically Isolated Interface
  - Up to 115,200 baud rate
- On-Board termination resistor
  - Jumper selectable
- Compatible with MityARM/MityDSP based Development Kits from Critical Link



(2.2" x 1.2" – actual size)

## DESCRIPTION

The PROFIBUS/RS485 Expansion Kit is compatible with Critical Link's line of MityARM/MityDSP based development kits; one is required to interface with this expansion kit. Specific MityARM/MityDSP based System on Modules support PROFIBUS. All MityARM/MityDSP based System on Modules support RS485, see Table 1 for details concerning SoM support for PROFIBUS.

Table 1: Critical Link SoM PROFIBUS Support

| Module Type   | PROFIBUS Support | RS485 Support |
|---------------|------------------|---------------|
| MityARM-1810  | Yes              | Yes           |
| MityARM-1810F | Yes              | Yes           |
| MityDSP-L138  | Yes              | Yes           |
| MityDSP-L138F | Yes              | Yes           |
| MityARM-1808  | No               | Yes           |
| MityARM-1808F | No               | Yes           |
| MityARM-3359  | No               | Yes           |

### **PROFIBUS Interface Description**

Texas Instruments Inc. (TI) has integrated PROFIBUS functionality into its AM1810 Sitara ARM microprocessor (MPU). The expansion kit utilizes one of the AM1810 onboard UARTS through the Expansion Header on the PROFIBUS DEVELOPMENT KIT base board. This eliminates the need of an external ASIC or FPGA to support the PROFIBUS interface. Customers using a supported SoM in their industrial application can save cost and reduce design complexity as well as PCB space. Furthermore, the industrial application benefits from the low-power architecture of the Sitara ARM MPU and the MityARM-1810 or MityDSP-L138 platforms from TI and Critical Link. The ARM MPU PROFIBUS Slave solution has been certified by PROFIBUS International (PI).

The PROFIBUS real-time frame handler (Fieldbus Data Link or FDL) is encapsulated in the Programmable Real-Time Unit Subsystem (PRUSS), which is part of the Sitara ARM MPU on-chip peripherals. The PRUSS uses one Universal Asynchronous Receiver/Transmitter (UART) and a timer to generate PROFIBUS-compliant frames. The industrial application and the PROFIBUS DP-Protocol (Layer 7) are operated on the ARM. The solution is completed with an RS-485 transceiver suitable for harsh environments, such as TI's ISO1176 which is found on the PROFIBUS-RS485 Expansion Kit board.

The PROFIBUS subsystem uses the PRUs that implement real-time frame handling; PROFIBUS message transmission, frame validation and communication with the ARM processor. The PROFIBUS subsystem interfaces with one of the UARTs in the Sitara ARM MPU, which is designated for PROFIBUS communication at up to 6Mbaud data rate. The PRU uses interrupts to interact with the ARM where the PROFIBUS stack (Layer 7, DP Protocol) and the industrial application is run. All process data handling like cyclic, acyclic and service access point (SAP) between the PROFIBUS stack on ARM and the PRU is through the internal memory.

Linux Driver and API examples are available to support PROFIBUS functionality.

Additional details about PROFIBUS support can be found on TI's website ([www.ti.com/tool/profibus](http://www.ti.com/tool/profibus)).

### **RS485 Interface Description**

When using any of the Critical Link MityARM/MityDSP based System on Modules (Som) the RS485 protocol is supported. When paired with our MityARM/MityDSP based development kits the RS485 Expansion Kit can be seamlessly added to your design.

A data rate of up to 115,200 baud is supported through this interface. Linux Driver and API examples are available to support RS-485 functionality.

### **PROFIBUS / RS-485 Electrical Description**

The PROFIBUS/RS-485 Expansion Kit provides standard serial interface at data rates up to 115,200 baud. The serial interface is routed to the UART2 serial port of MityARM / MityDSP through the Expansion Header on a MityARM/MityDSP based Development Kit.

The galvanic isolation is provided by a dedicated TI ISO1176 transceiver. The ISO1176 is powered by an isolated power supply with 1000V isolation from the primary supply.

Jumper JP500 can provide a dedicated 220 ohm bus termination resistor.

If the interface is to be configured to support PROFIBUS, JP501, JP502 and JP505 should be installed.

In the RS-485 configuration JP501 and JP505 should be installed and JP502 removed.

The electrical interface between the PROFIBUS/RS485 Expansion Kit and MityARM/MityDSP based Development Kit is provided via the 10-pin shrouded header described in Table 2.

The electrical in between the PROFIBUS/RS485 Expansion Kit and an external device is provided via the 9-pin DB0 connector described in Table 3.

Please reference your specific MityARM/MityDSP Based Development Kit documentation to determine which connector to use for the PROFIBUS/RS485 Expansion Kit.

### PROFIBUS/RS485 Expansion Kit Pinouts

Table 2 shows the input 10-pin shrouded header pin out for the PROFIBUS/RS485 Expansion Kit input header. This connector, J504, is the interface to the MityARM/MityDSP based development kit.

**Table 2: PROFIBUS/RS485 Expansion Kit 10-Pin Header Pin Out**

| Pin | Name            | Type      | Note                  |
|-----|-----------------|-----------|-----------------------|
| 1   | RS485 TX Enable | 3.3V CMOS | Input to Expansion    |
| 2   | RS485 RX        | 3.3V CMOS | Output from Expansion |
| 3   | +3.3V           | Power     | 20mA max              |
| 4   | Reserved        | -         |                       |
| 5   | Reserved        | -         |                       |
| 6   | RS485 TX        | 3.3V CMOS | Input to Expansion    |
| 7   | GND             | Power     |                       |
| 8   | Reserved        | -         |                       |
| 9   | Reserved        | -         |                       |
| 10  | Reserved        | -         |                       |

Table 3 shows the output 9-pin DB9 connector, J500, to interface with an outside PROFIBUS/RS485 device.

**Table 3: PROFIBUS/RS485 Expansion Kit 9-Pin DB9 Pin Out**

| Pin | Name       | Type  | Note                          |
|-----|------------|-------|-------------------------------|
| 1   | Reserved   | -     |                               |
| 2   | Reserved   | -     |                               |
| 3   | A          | RS485 | Data signal                   |
| 4   | Reserved   | -     |                               |
| 5   | GND_ISO485 | Power |                               |
| 6   | +5V_RS485  | Power | Isolated output, jumper JP502 |
| 7   | Reserved   | -     |                               |
| 8   | B          | RS485 | Data signal                   |
| 9   | Reserved   | -     |                               |

## ABSOLUTE MAXIMUM RATINGS

If Military/Aerospace specified cards are required, please contact the Critical Link Sales Office or unit Distributors for availability and specifications.

Maximum Supply Voltage, Vcc            3.4 V

Storage Temperature Range            -65 to 80C

## OPERATING CONDITIONS

Commercial                                    0 to 70C  
Temperature Range  
Humidity                                        0 to 95%  
Non-condensing

## ELECTRICAL CHARACTERISTICS

| Symbol | Parameter                              | Conditions | Min | Typ | Max | Units     |
|--------|--|------------|-----|-----|-----|-----------|
| Vcc    | Voltage supply, 3.3 volt input.        |            |     | 3.3 | 3.4 | Volts     |
| Icc    | Quiescent Current draw, 3.3 volt input |            |     | TBD | TBD | Milliamps |
|        |  |            |     |     |     |           |

## ORDERING INFORMATION

The following table lists the orderable module configurations. For shipping status, availability, and lead time of these or other configurations please contact your Critical Link representative.

The necessary 10-pin cable to connect to a MityARM/MityDSP based Development Kit is provided with each PROFIBUS/RS485 Expansion Kit.

**Table 4: Orderable Model Numbers**

| Model     | Protocol(s) Supported |
|-----------|-----------------------|
| 80-000540 | PROFIBUS/RS485        |

## MECHANICAL INTERFACE

A mechanical outline of the PROFIBUS/RS485 Board is illustrated below.

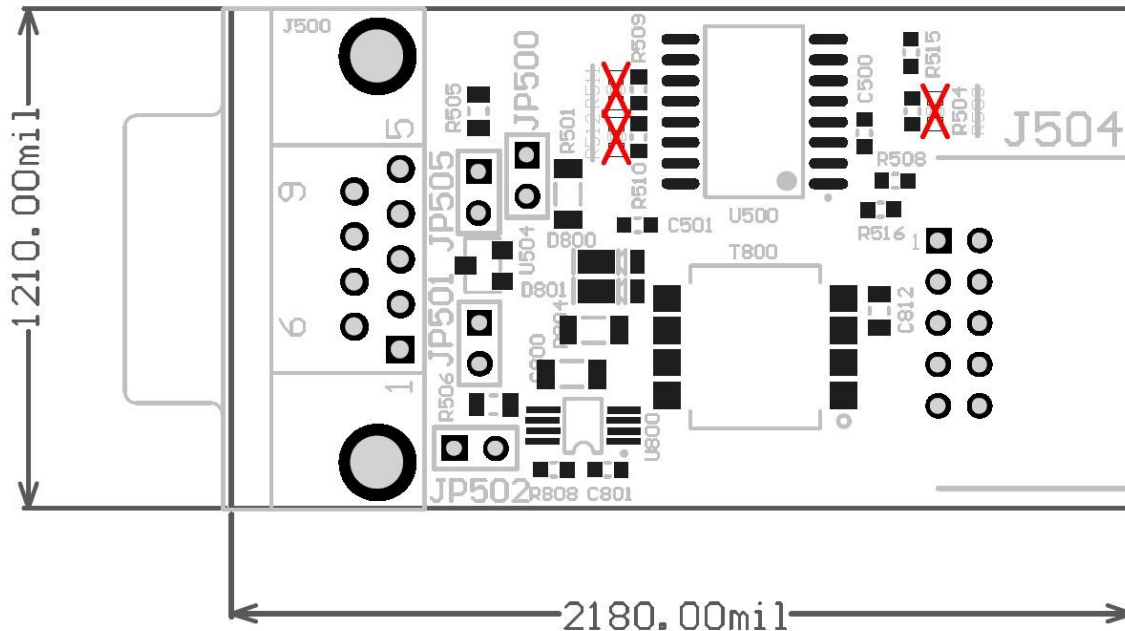


Figure 1: Dimensions 2.2" x 1.2"

## REVISION HISTORY

| Date        | Change Description      |
|-------------|-------------------------|
| 13-MAR-2012 | Initial revision.       |
| 10-OCT-2012 | Minor text corrections. |
| 17-OCT-2012 | Update part number      |
|             |                         |



Компания «ЭлектроПласт» предлагает заключение долгосрочных отношений при поставках импортных электронных компонентов на взаимовыгодных условиях!

Наши преимущества:

- Оперативные поставки широкого спектра электронных компонентов отечественного и импортного производства напрямую от производителей и с крупнейших мировых складов;
- Поставка более 17-ти миллионов наименований электронных компонентов;
- Поставка сложных, дефицитных, либо снятых с производства позиций;
- Оперативные сроки поставки под заказ (от 5 рабочих дней);
- Экспресс доставка в любую точку России;
- Техническая поддержка проекта, помощь в подборе аналогов, поставка прототипов;
- Система менеджмента качества сертифицирована по Международному стандарту ISO 9001;
- Лицензия ФСБ на осуществление работ с использованием сведений, составляющих государственную тайну;
- Поставка специализированных компонентов (Xilinx, Altera, Analog Devices, Intersil, Interpoint, Microsemi, Aeroflex, Peregrine, Syfer, Eurofarad, Texas Instrument, Miteq, Cobham, E2V, MA-COM, Hittite, Mini-Circuits, General Dynamics и др.);

Помимо этого, одним из направлений компании «ЭлектроПласт» является направление «Источники питания». Мы предлагаем Вам помощь Конструкторского отдела:

- Подбор оптимального решения, техническое обоснование при выборе компонента;
- Подбор аналогов;
- Консультации по применению компонента;
- Поставка образцов и прототипов;
- Техническая поддержка проекта;
- Защита от снятия компонента с производства.



#### Как с нами связаться

**Телефон:** 8 (812) 309 58 32 (многоканальный)

**Факс:** 8 (812) 320-02-42

**Электронная почта:** [org@eplast1.ru](mailto:org@eplast1.ru)

**Адрес:** 198099, г. Санкт-Петербург, ул. Калинина, дом 2, корпус 4, литера А.