

## DUAL OPERATIONAL AMPLIFIER

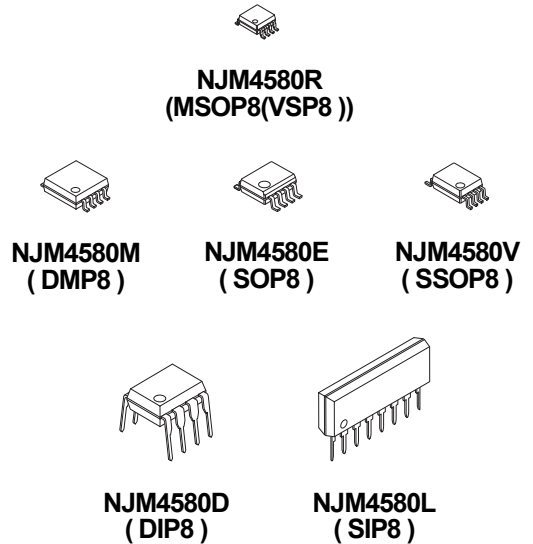
### ■ GENERAL DESCRIPTION

The NJM4580 is a dual operational amplifier, specially designed for improving the tone control, which is most suitable for the audio application.

Featuring noiseless, higher gain bandwidth, high output current and low distortion ratio, and it is most suitable not only for acoustic electronic parts of audio pre-amp and active filter, but also for the industrial measurement tools. It is also suitable for the head phone amp at higher output current, and further more, it can be applied for the handy type set operational amplifier of general purpose in application of low voltage single supply type which is properly biased of the low voltage source.

The D-Rank type products(NJM4580DD/LD/MD/ED) have specified maximum limits for equivalent input noise voltage.

### ■ PACKAGE OUTLINE

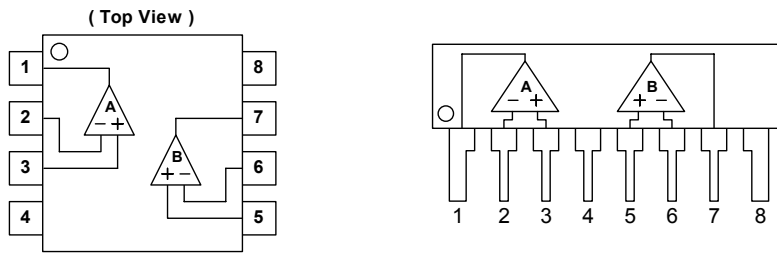


### ■ FEATURES

- Operating Voltage                     $\pm 2V \sim \pm 18V$
- Low Input Noise Voltage         $0.8\mu V_{rms}$  typ. (RIAA)
- Wide GBW                            15MHz typ.
- Low Distortion                    0.0005% typ.
- Slew Rate                             $5V/\mu s$  typ.
- Bipolar Technology
- Package Outline

DIP8, SIP8, DMP8, SSOP8, MSOP8(VSP8) MEET JEDEC MO-187-DA  
SOP8 JEDEC 150mil

### ■ PIN CONFIGURATION



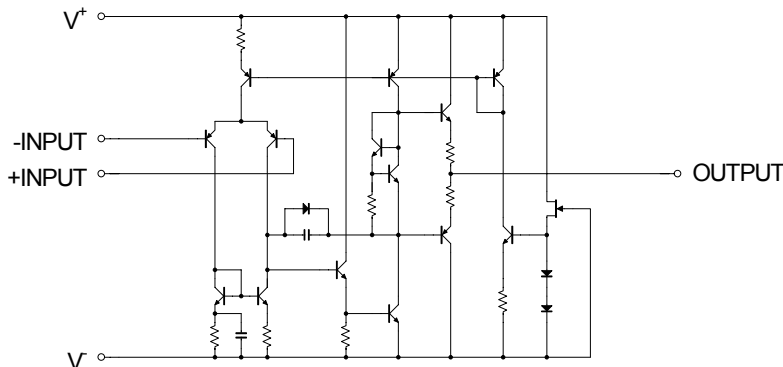
NJM4580D, NJM4580M, NJM4580E  
NJM4580V, NJM4580R

NJM4580L

### PIN FUNCTION

1. A OUTPUT
2. A - INPUT
3. A + INPUT
4.  $V^-$
5. B + INPUT
6. B - INPUT
7. B OUTPUT
8.  $V^+$

### ■ EQUIVALENT CIRCUIT ( 1/2 Shown )



# NJM4580

## ■ ABSOLUTE MAXIMUM RATINGS

(Ta=25°C, unless otherwise noted.)

| PARAMETER                   | SYMBOL            | RATING   | UNIT |
|-----------------------------|-------------------|--|------|
| Supply Voltage              | V <sup>+</sup> /V | ±18  | V    |
| Input Voltage               | V <sub>ICM</sub>  | ±15 (Note1)  | V    |
| Differential Input Voltage  | V <sub>ID</sub>   | ±30 (Note1)  | V    |
| Power Dissipation           | P <sub>D</sub>    | DIP8, SIP8 : 800<br>DMP8, SOP8 : 300<br>SSOP8 : 250<br>MSOP8(VSP8) : 400 (Note2) | mW   |
| Operating Temperature Range | Topr              | -40~+85  | °C   |
| Storage Temperature Range   | Tstg              | -40~+125   | °C   |

(Note1) For supply voltage less than ±15V, the absolute maximum input voltage is equal to supply voltage.

(Note2) On the PCB "EIA/JEDEC (114.3×76.2×1.57mm, 2 layers, FR-4)"

## ■ RECOMMENDED OPERATING CONDITIONS

(Ta=25°C)

| PARAMETER      | SYMBOL            | CONDITION | MIN. | TYP. | MAX. | UNIT |
|----------------|-------------------|-----------|------|------|------|------|
| Supply Voltage | V <sup>+</sup> /V |           | ±2   | -    | ±18  | V    |

## ■ ELECTRICAL CHARACTERISTICS

(V<sup>+</sup>/V=±15V, Ta=25°C, unless otherwise noted.)

| PARAMETER                       | SYMBOL           | TEST CONDITION  | MIN. | TYP.   | MAX. | UNIT  |
|---------------------------------|------------------|---|------|--------|------|-------|
| Input Offset Voltage            | V <sub>IO</sub>  | R <sub>S</sub> ≤10kΩ  | -    | 0.3    | 3    | mV    |
| Input Offset Current            | I <sub>IO</sub>  |   | -    | 5      | 200  | nA    |
| Input Bias Current              | I <sub>B</sub>   |   | -    | 100    | 500  | nA    |
| Voltage Gain                    | A <sub>V</sub>   | R <sub>L</sub> ≥2kΩ, V <sub>O</sub> =±10V                             | 90   | 110    | -    | dB    |
| Maximum Output Voltage          | V <sub>OM</sub>  | R <sub>L</sub> ≥2kΩ   | ±12  | ±13.5  | -    | V     |
| Common Mode Input Voltage Range | V <sub>ICM</sub> |   | ±12  | ±13.5  | -    | V     |
| Common Mode Rejection Ratio     | CMR              | R <sub>S</sub> ≤10kΩ  | 80   | 110    | -    | dB    |
| Supply Voltage Rejection Ratio  | SVR              | R <sub>S</sub> ≤10kΩ  | 80   | 110    | -    | dB    |
| Supply Current                  | I <sub>CC</sub>  |   | -    | 6      | 9    | mA    |
| Slew Rate                       | SR               | R <sub>L</sub> ≥2kΩ   | -    | 5      | -    | V/μs  |
| Gain Bandwidth Product          | GB               | f=10kHz   | -    | 15     | -    | MHz   |
| Total Harmonic Distortion       | THD              | A <sub>V</sub> =20dB, V <sub>O</sub> =5V, R <sub>L</sub> =2kΩ, f=1kHz | -    | 0.0005 | -    | %     |
| Equivalent Input Noise Voltage  | V <sub>NI</sub>  | RIAA, R <sub>S</sub> =2.2kΩ, 30kHz LPF                                | -    | 0.8    | -    | μVrms |

## ■ ELECTRICAL CHARACTERISTICS

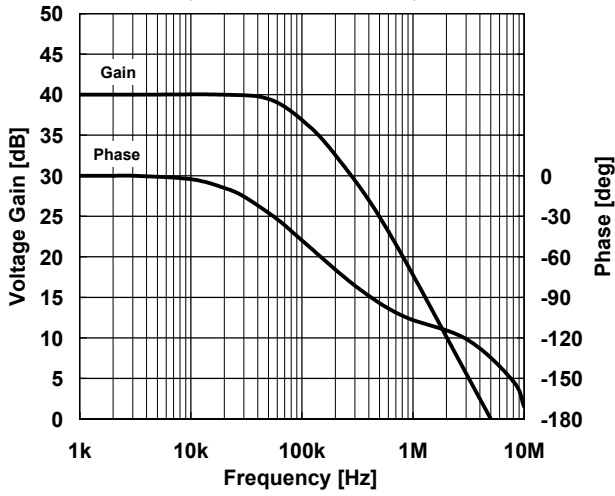
(D-rank type(Note3), V<sup>+</sup>/V=±15V, Ta=25°C, unless otherwise noted.)

| PARAMETER                      | SYMBOL          | TEST CONDITION              | MIN. | TYP. | MAX. | UNIT  |
|--------------------------------|-----------------|-----------------------------|------|------|------|-------|
| Equivalent Input Noise Voltage | V <sub>NI</sub> | RIAA, R <sub>S</sub> =2.2kΩ | -    | -    | 1.4  | μVrms |

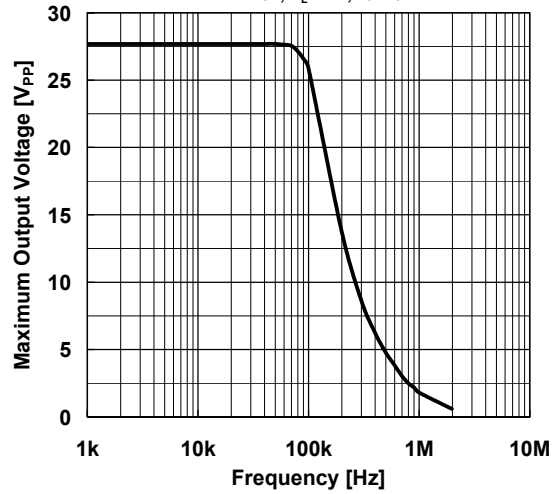
(Note3) D-rank type is a Equivalent Input Noise Voltage selected product. It s only DIP, DMP, SOP and SIP package.

## ■ TYPICAL CHARACTERISTICS

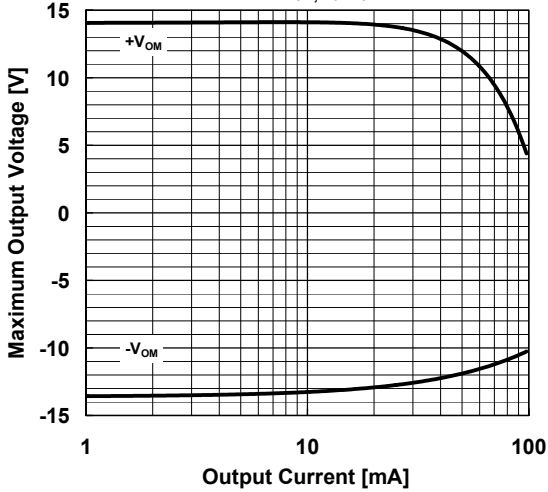
**40dB Gain/Phase vs. Frequency**  
 $V^+/V^-=\pm 15V, R_L=2k\Omega, T_a=25^\circ C$



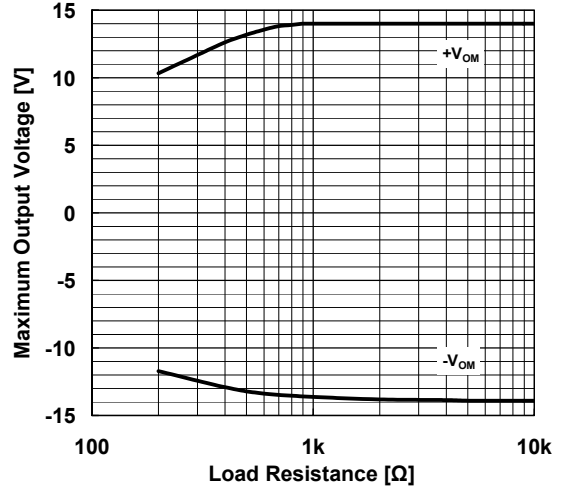
**Maximum Output Voltage vs. Frequency**  
 $V^+/V^-=\pm 15V, R_L=2k\Omega, T_a=25^\circ C$



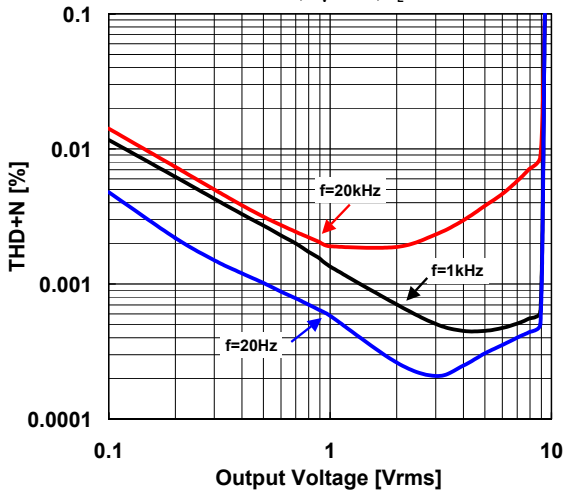
**Maximum Output Voltage vs. Output Current**  
 $V^+/V^-=\pm 15V, T_a=25^\circ C$



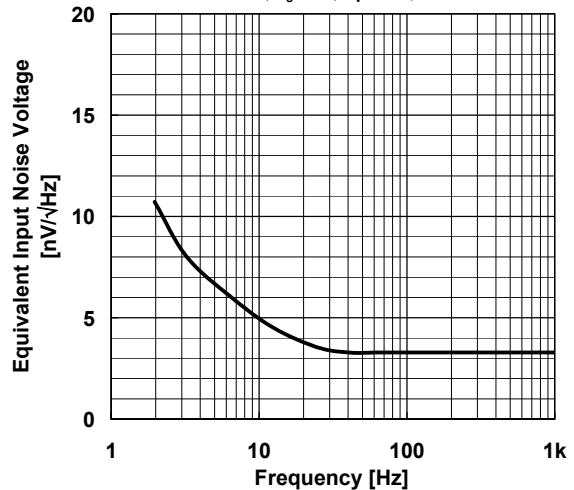
**Maximum Output Voltage vs. Load Resistance**  
 $V^+/V^-=\pm 15V, T_a=25^\circ C$



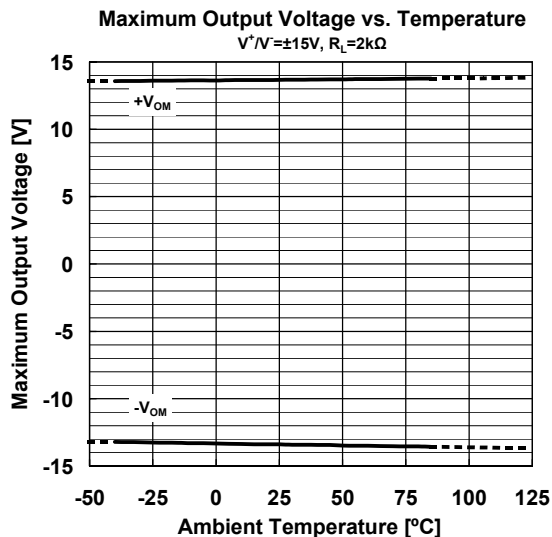
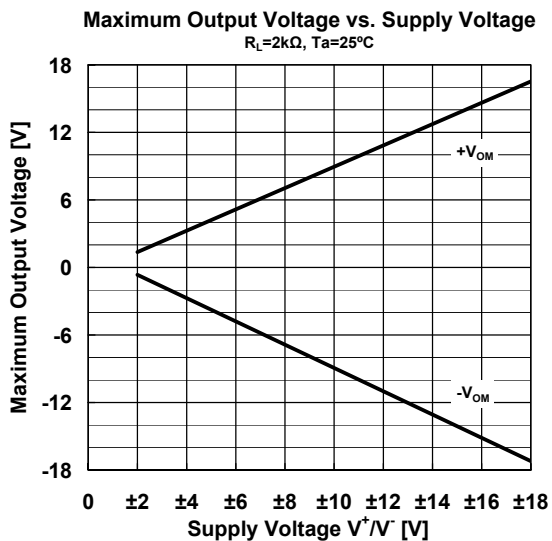
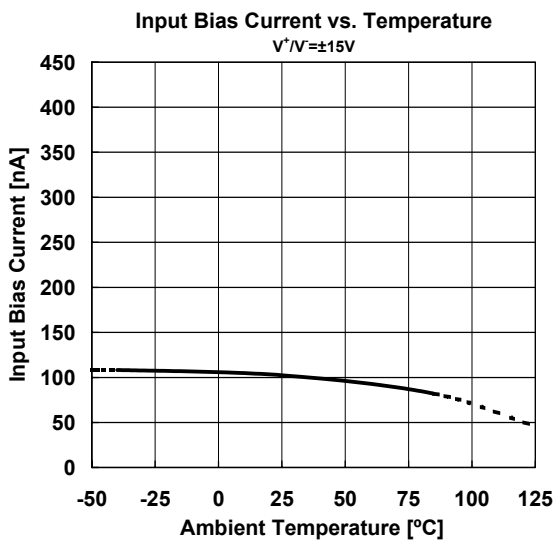
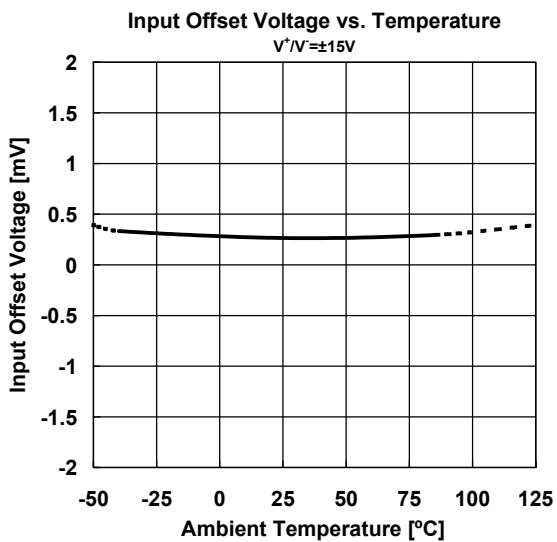
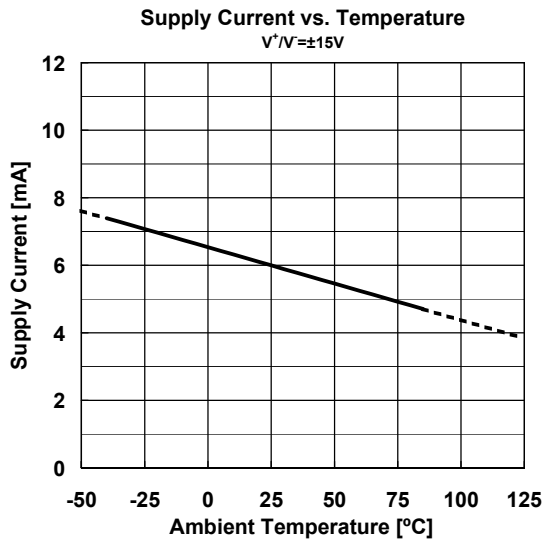
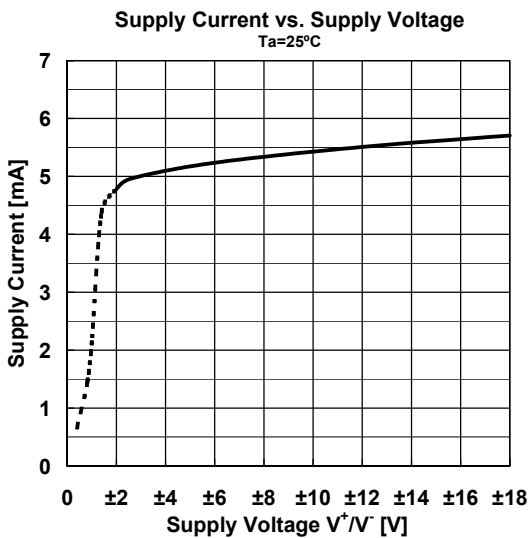
**THD+N vs. Output Voltage (Frequency)**  
 $V^+/V^-=\pm 15V, G_v=20dB, R_L=2k\Omega$



**Voltage Noise vs. Frequency**  
 $V^+/V^-=\pm 15V, R_g=50\Omega, G_v=60dB, T_a=25^\circ C$

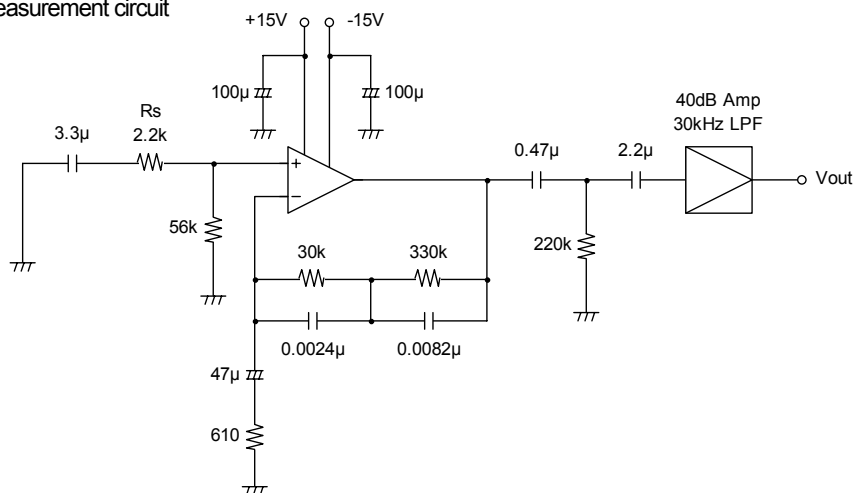


## ■ TYPICAL CHARACTERISTICS



## ■ TEST CIRCUIT

Noise Voltage (RIAA) measurement circuit



**[CAUTION]**

The specifications on this databook are only given for information, without any guarantee as regards either mistakes or omissions. The application circuits in this databook are described only to show representative usages of the product and not intended for the guarantee or permission of any right including the industrial rights.

# Mouser Electronics

Authorized Distributor

Click to View Pricing, Inventory, Delivery & Lifecycle Information:

[NJR:](#)

[NJM4580MD-TE2](#) [NJM4580MD-TE1](#) [NJM4580M-TE2](#) [NJM4580M-TE1](#) [NJM4580V-TE1](#) [NJM4580V-TE2](#)  
[NJM4580E-TE1](#) [NJM4580E-TE2](#) [NJM4580L](#) [NJM4580D](#) [NJM4580E](#) [NJM4580M](#) [NJM4580MD](#) [NJM4580DD](#)



Компания «ЭлектроПласт» предлагает заключение долгосрочных отношений при поставках импортных электронных компонентов на взаимовыгодных условиях!

Наши преимущества:

- Оперативные поставки широкого спектра электронных компонентов отечественного и импортного производства напрямую от производителей и с крупнейших мировых складов;
- Поставка более 17-ти миллионов наименований электронных компонентов;
- Поставка сложных, дефицитных, либо снятых с производства позиций;
- Оперативные сроки поставки под заказ (от 5 рабочих дней);
- Экспресс доставка в любую точку России;
- Техническая поддержка проекта, помощь в подборе аналогов, поставка прототипов;
- Система менеджмента качества сертифицирована по Международному стандарту ISO 9001;
- Лицензия ФСБ на осуществление работ с использованием сведений, составляющих государственную тайну;
- Поставка специализированных компонентов (Xilinx, Altera, Analog Devices, Intersil, Interpoint, Microsemi, Aeroflex, Peregrine, Syfer, Eurofarad, Texas Instrument, Miteq, Cobham, E2V, MA-COM, Hittite, Mini-Circuits, General Dynamics и др.);

Помимо этого, одним из направлений компании «ЭлектроПласт» является направление «Источники питания». Мы предлагаем Вам помощь Конструкторского отдела:

- Подбор оптимального решения, техническое обоснование при выборе компонента;
- Подбор аналогов;
- Консультации по применению компонента;
- Поставка образцов и прототипов;
- Техническая поддержка проекта;
- Защита от снятия компонента с производства.



#### Как с нами связаться

**Телефон:** 8 (812) 309 58 32 (многоканальный)

**Факс:** 8 (812) 320-02-42

**Электронная почта:** [org@eplast1.ru](mailto:org@eplast1.ru)

**Адрес:** 198099, г. Санкт-Петербург, ул. Калинина, дом 2, корпус 4, литера А.