

## Surge protection device - PT 2-TELE - 2882828

Please be informed that the data shown in this PDF Document is generated from our Online Catalog. Please find the complete data in the user's documentation. Our General Terms of Use for Downloads are valid (<http://download.phoenixcontact.com>)



Surge protection plug, consisting of plug and base element, for protecting a double conductor of analog telecommunication interfaces.

### Product description

Surge protection plug for DIN rail mounting, 2-section pluggable, normal mode voltage coarse and fine protection for 2-conductor analog telecommunication interface as well as common mode voltage coarse protection to ground.

### Why buy this product

- For ISDN Uk0 and DSL applications
- For analog telecommunications
- Two-piece, plug-in
- Broadband protection for telecommunications lines
- Worldwide use
- High discharge capacity
- Plugs can be checked with CHECKMASTER



### Key commercial data

Packing unit	1
Minimum order quantity	1
Catalog page	Page 155 (TT-2011)
GTIN	 4 046356 115148
Custom tariff number	85363010
Country of origin	GERMANY

### Technical data

#### General

Housing material	PA
Inflammability class according to UL 94	V0
Color	black
Standards for air and creepage distances	VDE 0110-1
Standards for air and creepage distances	IEC 60644-1
Total surge current (8/20) $\mu$ s	20 kA

# Surge protection device - PT 2-TELE - 2882828

## Technical data

### General

Ambient temperature (operation)	-40 °C ... 85 °C
Mounting type	DIN rail: 35 mm
Design	DIN rail module, two-section, divisible
Number of positions	2
Degree of protection	IP20
Direction of action	Line-Line & Line-Earth Ground
Width	17.7 mm
Height	90 mm
Depth	65.5 mm
Pitch unit	1 Div.

### Protective circuit

IEC category	C1
IEC category	C2
IEC category	C3
IEC category	D1
IEC category	B2
VDE requirement class	C1
VDE requirement class	C2
VDE requirement class	C3
VDE requirement class	D1
VDE requirement class	B2
Maximum continuous operating voltage UC	185 V DC
Maximum continuous operating voltage UC	130 V AC
Maximum continuous voltage UC (wire-wire)	185 V DC
Maximum continuous voltage UC (wire-wire)	130 V AC
Maximum continuous voltage UC (wire-ground)	185 V DC
Maximum continuous voltage UC (wire-ground)	130 V AC
Nominal current I <sub>N</sub>	450 mA (45°C)
Operating effective current I <sub>C</sub> at UC	≤ 10 μA
Ground conductor current I <sub>PE</sub>	≤ 10 μA
Nominal discharge surge current I <sub>n</sub> (8/20) μs (Core-Core)	10 kA
Nominal discharge surge current I <sub>n</sub> (8/20) μs (Core-Earth)	10 kA
Total surge current (8/20) μs	20 kA
Max. discharge surge current I <sub>max</sub> (8/20) μs maximum (Core-Earth)	18 kA
Nominal pulse current I <sub>an</sub> (10/700) μs (Core-Core)	100 A
Nominal pulse current I <sub>an</sub> (10/700) μs (Core-Earth)	100 A
Lightning test current (10/350) μs, peak value limp	1 kA
Output voltage limitation at 1 kV/μs (Core-Core) static	≤ 300 V
Output voltage limitation at 1 kV/μs (Core-Earth) static	≤ 300 V
Residual voltage at I <sub>n</sub> , (conductor-conductor)	≤ 160 V (C2 - 10 kV / 5 kA)
Residual voltage at I <sub>n</sub> , (conductor-ground)	≤ 200 V (C2 - 10 kV / 5 kA)
Protection level UP (Core-Core)	≤ 330 V (C2 - 10 kV / 5 kA)

# Surge protection device - PT 2-TELE - 2882828

## Technical data

### Protective circuit

Protection level UP (Core-Core)	≤ 300 V (C2 - 2 kV/1 kA)
Protection level UP (Core-Core)	≤ 270 V (C1 - 1 kV/500 A)
Protection level UP (Core-Core)	≤ 300 V (B2 - 4 kV/100 A)
Protection level UP (Core-Earth)	≤ 300 V (C2 - 2 kV / 1 kA)
Response time tA (Core-Core)	≤ 500 ns
Response time tA (Core-Earth)	≤ 500 ns
Input attenuation aE, sym.	Typ. 0.4 dB (≤ 5 MHz)
Cut-off frequency fg (3 dB), sym. in 100 Ohm system	Typ. 20 MHz
Capacity (Core-Core)	Typ. 30 pF
Capacity (Core-Earth)	Typ. 30 pF
Resistance in series	2.2 Ω ±10 %
Surge carrying capacity in acc. with IEC 61643-21 (Core-Core)	B2 (4 kV / 100 A)
Surge carrying capacity in acc. with IEC 61643-21 (Core-Core)	C1 (1 kV / 500 A)
Surge carrying capacity in acc. with IEC 61643-21 (Core-Core)	C2 (10 kV/5 kA)
Surge carrying capacity in acc. with IEC 61643-21 (Core-Core)	C3 (2 kV/25 A)
Surge carrying capacity in acc. with IEC 61643-21 (Core-Core)	D1 (1 kA)
Surge carrying capacity in acc. with IEC 61643-21 (Core-Earth)	B2 (4 kV / 100 A)
Surge carrying capacity in acc. with IEC 61643-21 (Core-Earth)	C1 (1 kV / 500 A)
Surge carrying capacity in acc. with IEC 61643-21 (Core-Earth)	C2 (10 kV/5 kA)
Surge carrying capacity in acc. with IEC 61643-21 (Core-Earth)	C3 (2 kV/25 A)
Surge carrying capacity in acc. with IEC 61643-21 (Core-Earth)	D1 (1 kA)

### Connection data

Connection method	Screw connection
Connection type IN	Screw terminal blocks
Connection type OUT	Screw terminal blocks
Screw thread	M3
Tightening torque	0.8 Nm
Stripping length	8 mm
Conductor cross section stranded min.	0.2 mm <sup>2</sup>
Conductor cross section stranded max.	2.5 mm <sup>2</sup>
Conductor cross section solid min.	0.2 mm <sup>2</sup>
Conductor cross section solid max.	4 mm <sup>2</sup>
Conductor cross section AWG/kcmil min.	24
Conductor cross section AWG/kcmil max	12

### Connection, protective circuit

Standards/regulations	IEC 61643-21
-----------------------	--------------

## Classifications

### eclass

eCl@ss 4.0	27140201
eCl@ss 4.1	27130801

# Surge protection device - PT 2-TELE - 2882828

## Classifications

### eclass

eCl@ss 5.0	27130801
eCl@ss 5.1	27130801
eCl@ss 6.0	27130807
eCl@ss 7.0	27130807

### etim

ETIM 2.0	EC000943
ETIM 3.0	EC000943
ETIM 4.0	EC000943

### unspsc

UNSPSC 6.01	30212010
UNSPSC 7.0901	39121610
UNSPSC 11	39121610
UNSPSC 12.01	39121610
UNSPSC 13.2	39121620

## Approvals

### Approvals

---

Approvals

GOST

---

Ex Approvals

---

Approvals submitted

---

### Approval details



## Accessories

Accessories

Marking

## Surge protection device - PT 2-TELE - 2882828

### Accessories

Zack marker strip - ZB 5,LGS:FORTL.ZAHLEN - 1050017



Zack marker strip, Strip, white, Labeled, Can be labeled with: Plotter, Printed horizontally: Consecutive numbers 1 - 10, 11 - 20, etc. up to 491 - 500, Mounting type: Snap into tall marker groove, For terminal block width: 5.2 mm, Lettering field: 5.15 x 10.5 mm

Zack marker strip - ZB 5,8:UNBEDRUCKT - 2715209



Zack marker strip, Strip, white, Unlabeled, Can be labeled with: Plotter, Mounting type: Snap into tall marker groove, For terminal block width: 5.8 mm, Lettering field: 5.75 x 10.5 mm

### Additional products

Shield connection - SSA 3-6 - 2839295



shield fast connections for conductor diameter 3 - 6 mm. Potential connection cable: 200 mm, black

Shield connection - SSA 5-10 - 2839512

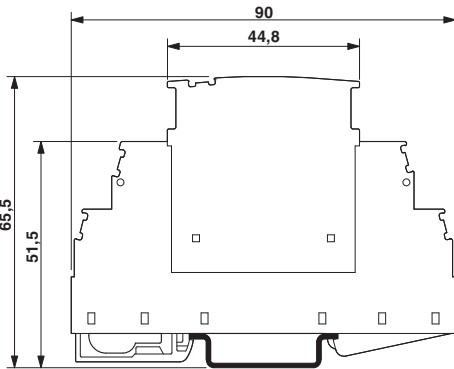


Shield fast connection for conductor diameters 5 - 10 mm. Potential connection cable: 200 mm, black

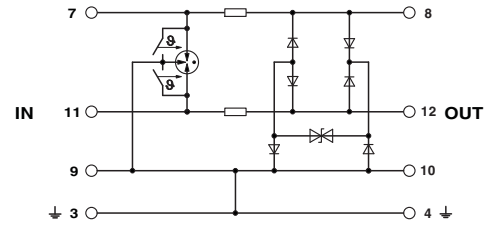
### Drawings

# Surge protection device - PT 2-TELE - 2882828

Dimensioned drawing



Circuit diagram





Компания «ЭлектроПласт» предлагает заключение долгосрочных отношений при поставках импортных электронных компонентов на взаимовыгодных условиях!

Наши преимущества:

- Оперативные поставки широкого спектра электронных компонентов отечественного и импортного производства напрямую от производителей и с крупнейших мировых складов;
- Поставка более 17-ти миллионов наименований электронных компонентов;
- Поставка сложных, дефицитных, либо снятых с производства позиций;
- Оперативные сроки поставки под заказ (от 5 рабочих дней);
- Экспресс доставка в любую точку России;
- Техническая поддержка проекта, помощь в подборе аналогов, поставка прототипов;
- Система менеджмента качества сертифицирована по Международному стандарту ISO 9001;
- Лицензия ФСБ на осуществление работ с использованием сведений, составляющих государственную тайну;
- Поставка специализированных компонентов (Xilinx, Altera, Analog Devices, Intersil, Interpoint, Microsemi, Aeroflex, Peregrine, Syfer, Eurofarad, Texas Instrument, Miteq, Cobham, E2V, MA-COM, Hittite, Mini-Circuits, General Dynamics и др.);

Помимо этого, одним из направлений компании «ЭлектроПласт» является направление «Источники питания». Мы предлагаем Вам помощь Конструкторского отдела:

- Подбор оптимального решения, техническое обоснование при выборе компонента;
- Подбор аналогов;
- Консультации по применению компонента;
- Поставка образцов и прототипов;
- Техническая поддержка проекта;
- Защита от снятия компонента с производства.



#### Как с нами связаться

**Телефон:** 8 (812) 309 58 32 (многоканальный)

**Факс:** 8 (812) 320-02-42

**Электронная почта:** [org@eplast1.ru](mailto:org@eplast1.ru)

**Адрес:** 198099, г. Санкт-Петербург, ул. Калинина, дом 2, корпус 4, литера А.