

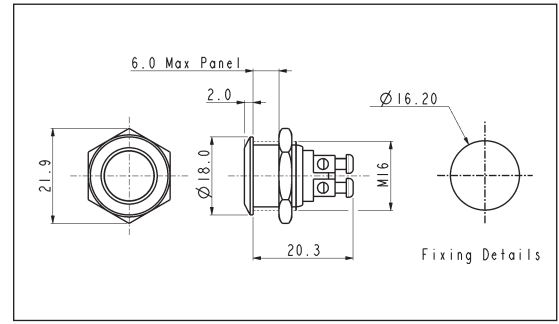
Stainless Steel - Momentary

FLUSH PROFILE



MP0042/1

- 18mm bezel diameter
- 16mm panel hole
- S.P. Push to make
- Polished finish
- 2A, 48V d.c.

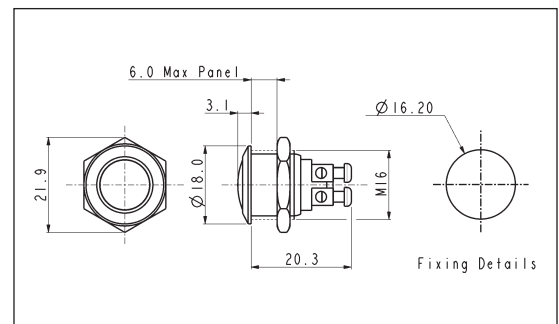


DOMED PROFILE



MP0042/2

- 18mm bezel diameter
- 16mm panel hole
- S.P. Push to make
- Polished finish
- 2A, 48V d.c.

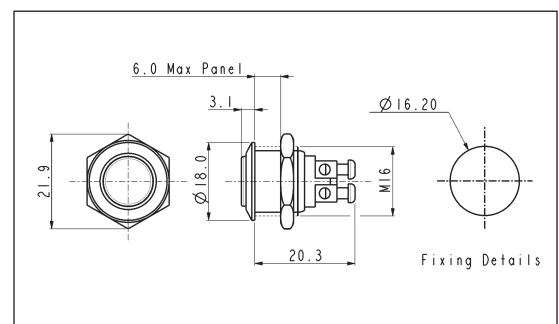


PROMINENT BUTTON



MP0042/3

- 18mm bezel diameter
- 16mm panel hole
- S.P. Push to make
- Polished finish
- 2A, 48V d.c.



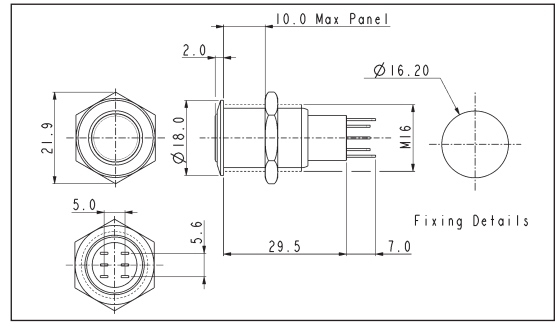
| Specification | MP0042/1 | MP0042/2 | MP0042/3 |
|-------------------------|-------------------------------------|-------------------------------------|-------------------------------------|
| Terminations: | Screw Terminals | Screw Terminals | Screw Terminals |
| Switching: | S.P. Push to Make | S.P. Push to Make | S.P. Push to Make |
| Max. Rating: | 2A, 48V d.c. | 2A, 48V d.c. | 2A, 48V d.c. |
| Contact Resistance: | 50mΩ at 1A, 2V | 50mΩ at 1A, 12V | 50mΩ at 1A, 12V |
| Insulation Resistance: | >10 ³ MΩ @ 500V d.c. | >10 ³ MΩ @ 500V d.c. | >10 ³ MΩ @ 500V d.c. |
| Dielectric Strength: | >2.0kV a.c. | >2.0kV a.c. | >2.0kV a.c. |
| Operating Temp. Range: | -20°C to +55°C | -20°C to +55°C | -20°C to +55°C |
| Operations | | | |
| Mechanical: | 1,000,000 (min) | 1,000,000 (min) | 1,000,000 (min) |
| Electrical: | 100,000 (min) | 100,000 (min) | 100,000 (min) |
| Rear Nut Fixing Torque: | 12Nm | 12Nm | 12Nm |
| Materials | | | |
| Mouldings: | Nylon | Nylon | Nylon |
| Tags/Terminations: | Brass, Silver Plated | Brass, Silver Plated | Brass, Silver Plated |
| Switch Body & Button: | Stainless Steel (Polished) | Stainless Steel (Polished) | Stainless Steel (Polished) |
| Contacts: | Silver | Silver | Silver |
| Variants: | Gold Plated Brass version available | Gold Plated Brass version available | Gold Plated Brass version available |
| RoHS | Compliant | Compliant | Compliant |

Stainless Steel - Momentary

LOW PROFILE



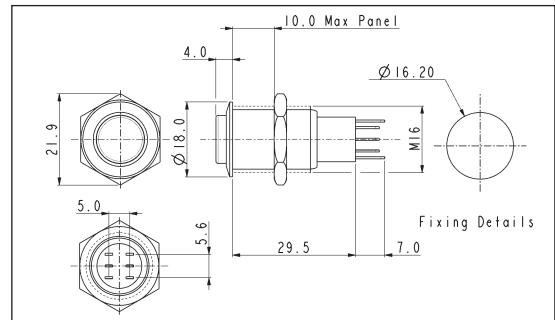
- 18mm bezel diameter
- 16mm fixing hole diameter
- D.P.C.O
- 3A, 250V



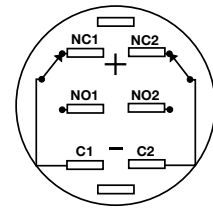
PROMINENT BUTTON



- 18mm bezel diameter
- 16mm fixing hole diameter
- D.P.C.O
- 3A, 250V



Contact Layout



Specification

MP0045/1D0NN000

MP0045/3D0NN000

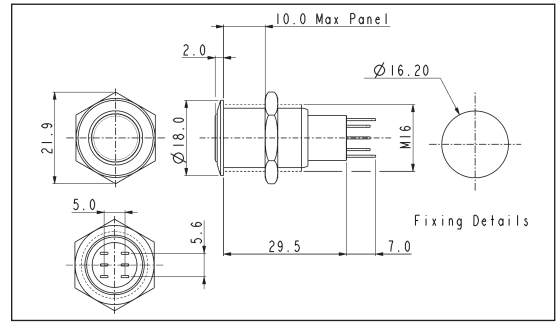
| | | |
|-------------------------|--|--|
| Terminations: | Solder tags | Solder Tags |
| Switching: | D.P.C.O Momentary Action | D.P.C.O Momentary Action |
| Max. Rating: | 3A, 250V | 3A, 250V |
| Contact Resistance: | 50mΩ max. @ 1A, 2V | 50mΩ max. @ 1A, 2V |
| Insulation Resistance: | > 10 ³ MΩ @ 500V d.c. | > 10 ³ MΩ @ 500V d.c. |
| Dielectric Strength: | > 2.0kV a.c. | > 2.0kV a.c. |
| Operating Temp. Range: | -20°C to +55°C | -20°C to +55°C |
| Operations | | |
| Mechanical: | 200,000 (min) | 200,000 (min) |
| Electrical: | 30,000 (min) | 30,000 (min) |
| Rear Nut Fixing Torque: | 12Nm max. | 12Nm max. |
| Materials | | |
| Mouldings: | Nylon | Nylon |
| Tags/Terminations: | Brass, Silver Plated | Brass, Silver Plated |
| Switch Body & Button: | Stainless Steel | Stainless Steel |
| Contacts: | Silver | Silver |
| Variants: | Nickel Plated Brass version available details on request | Nickel Plated Brass version available details on request |
| RoHS | Compliant | Compliant |

Stainless Steel - Latching

LOW PROFILE



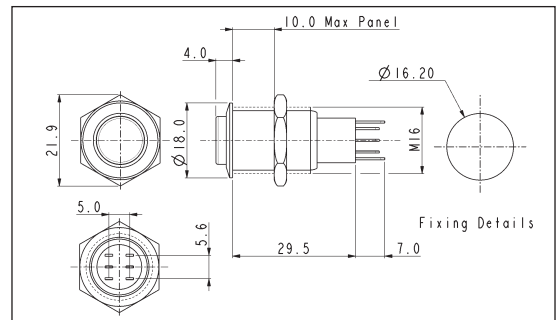
- 18mm bezel diameter
- 16mm fixing hole diameter
- D.P.C.O.
- 3A, 250V a.c.



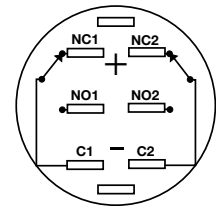
PROMINENT BUTTON



- 18mm bezel diameter
- 16mm fixing hole diameter
- D.P.C.O.
- 3A, 250V a.c.



Contact Layout



| Specification | MP0045/1E0NN00 | MP0045/3E0NN00 |
|-------------------------|---|---|
| Terminations: | Solder Tags | Solder Tags |
| Switching: | D.P.C.O. - Latching Action | D.P.C.O. - Latching Action |
| Max. Rating: | 3A, 250V | 3A, 250V |
| Contact Resistance: | 50mΩ max. @ 1A, 2V | 50mΩ max. @ 1A, 2V |
| Insulation Resistance: | >10 ³ MΩ @ 500V d.c. | >10 ³ MΩ @ 500V d.c. |
| Dielectric Strength: | >2.0kV a.c. | >2.0kV a.c. |
| Operating Temp. Range: | -20°C to +55°C | -20°C to +55°C |
| Operations | | |
| Mechanical: | 200,000 (min) | 200,000 (min) |
| Electrical: | 30,000 (min) | 30,000 (min) |
| Rear Nut Fixing Torque: | 12Nm max. | 12Nm max. |
| Materials | | |
| Mouldings: | Nylon | Nylon |
| Tags/Terminations: | Brass, Tin Plated | Brass, Tin Plated |
| Switch Body & Button: | Stainless Steel (Polished) | Stainless Steel (Polished) |
| Contacts: | Silver | Silver |
| Variants: | Nickel Plated Brass version details on request | Nickel Plated Brass version details on request |
| RoHS | Compliant | Compliant |

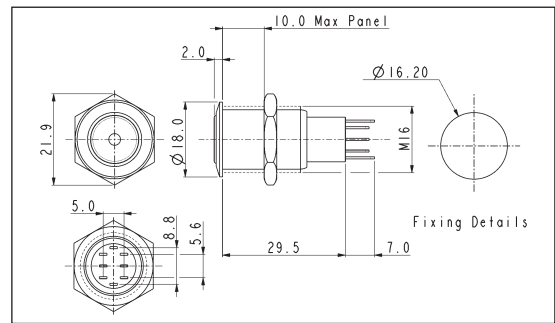
Stainless Steel Illuminated Momentary

FRONT PANEL MOUNTING



MP0045/1D1

- Dot Illuminated
- 18mm bezel diameter
- D.P.C.O.
- 3A, 250V ac
- Red, Green, Amber or Blue Illumination
- Separate LED Terminals

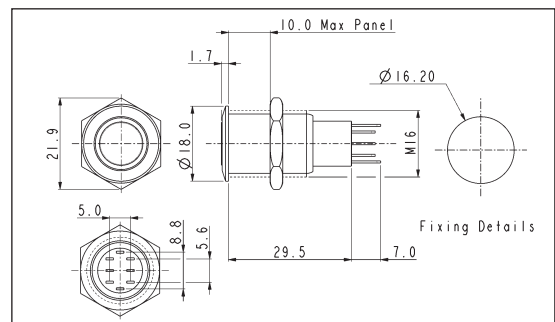


FRONT PANEL MOUNTING

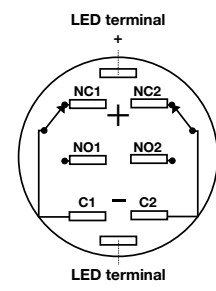


MP0045/1D2

- Ring Illuminated
- 18mm bezel diameter
- D.P.C.O.
- 3A, 250V ac
- Red, Green, Amber or Blue Illumination
- Separate LED Terminals



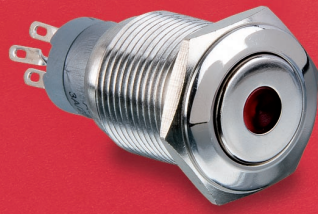
Contact Layout



| Specification | MP0045/1D1/Colour/Voltage | MP0045/1D2/Colour/Voltage |
|-------------------------|--------------------------------------|--------------------------------------|
| Terminations: | Solder Tags | Solder Tags |
| Illumination: | Dot | Ring |
| Switching: | D.P.C.O. Momentary Action | D.P.C.O. Momentary Action |
| Max. Switch Rating: | 3A, 250V a.c. | 3A, 250V a.c. |
| LEDs | | |
| Colours | Red Green Amber Blue | Red Green Amber Blue |
| Part No. | /RD /GN /AM /BL | /RD /GN /AM /BL |
| Voltage | 12V d.c. 220V d.c. | 12V d.c. 220V d.c. |
| Part No. | /012 /220 | /012 /220 |
| Contact Resistance: | 50mΩ max. @ 1A, 2V d.c. | 50mΩ max. @ 1A, 2V d.c. |
| Insulation Resistance: | >10 ³ MΩ @ 500V a.c. | >10 ³ MΩ @ 500V a.c. |
| Dielectric Strength: | >2.0kV a.c. | >2.0kV a.c. |
| Operating Temp. Range: | -30°C to +55°C | -30°C to +55°C |
| Operations | | |
| Mechanical: | 200,000 (min) | 200,000 (min) |
| Electrical: | 30,000 (min) | 30,000 (min) |
| Rear Nut Fixing Torque: | 12Nm | 12Nm |
| Materials | | |
| Mouldings: | Nylon | Nylon |
| Tags: | Brass, Silver Plated | Brass, Silver Plated |
| Switch Body & Button: | Stainless Steel (Polished) | Stainless Steel (Polished) |
| O ring: | Nitrile | Nitrile |
| Variants | Prominent Button, details on request | Prominent Button, details on request |
| RoHS | Compliant | Compliant |

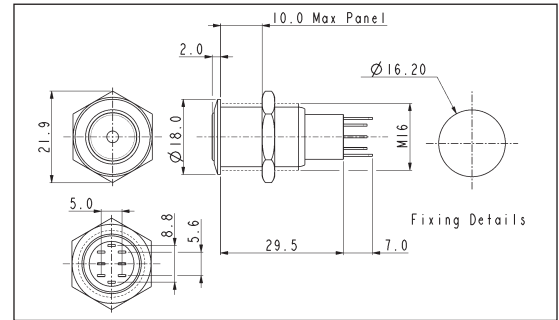
Stainless Steel Illuminated Latching

FRONT PANEL MOUNTING



MP0045/1E1

- Dot Illuminated
- 18mm bezel diameter
- D.P.C.O.
- 3A, 250V ac
- Red, Green, Amber or Blue Illumination
- Separate LED Terminals

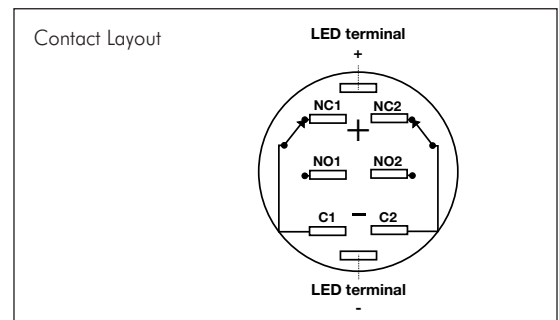
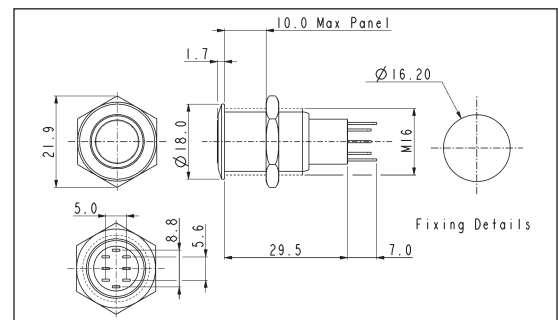


FRONT PANEL MOUNTING



MP0045/1E2

- Ring Illuminated
- 18mm bezel diameter
- D.P.C.O.
- 3A, 250V ac
- Red, Green, Amber or Blue Illumination
- Separate LED Terminals



| Specification | MP0045/1E1/Colour/Voltage | MP0045/1E2/Colour/Voltage |
|-------------------------|---|---|
| Terminations: | Solder Tags | Solder Tags |
| Illumination: | Dot | Ring |
| Switching: | D.P.C.O. Latching Action | D.P.C.O. Latching Action |
| Max. Switch Rating: | 3A, 250V a.c. | 3A, 250V a.c. |
| LEDs | | |
| Colours | Red /RD Green /GN Amber /AM Blue /BL | Red /RD Green /GN Amber /AM Blue /BL |
| Part No. | | |
| Voltage | 12V d.c. 220V d.c. | 12V d.c. 220V d.c. |
| Part No. | /012 /220 | /012 /220 |
| Contact Resistance: | 50mΩ max. @ 1A, 2V d.c. | 50mΩ max. @ 1A, 2V d.c. |
| Insulation Resistance: | >10 ³ MΩ @ 500V a.c. | >10 ³ MΩ @ 500V a.c. |
| Dielectric Strength: | >2.0kV a.c. | >2.0kV a.c. |
| Operating Temp. Range: | -30°C to +55°C | -30°C to +55°C |
| Operations | | |
| Mechanical: | 200,000 (min) | 200,000 (min) |
| Electrical: | 30,000 (min) | 30,000 (min) |
| Rear Nut Fixing Torque: | 12Nm | 12Nm |
| Materials | | |
| Mouldings: | Nylon | Nylon |
| Tags: | Brass, Silver Plated | Brass, Silver Plated |
| Switch Body & Button: | Stainless Steel (Polished) | Stainless Steel (Polished) |
| O ring: | Nitrile | Nitrile |
| Variants | Prominent Button, details on request | Prominent Button, details on request |
| RoHS | Compliant | Compliant |



Компания «ЭлектроПласт» предлагает заключение долгосрочных отношений при поставках импортных электронных компонентов на взаимовыгодных условиях!

Наши преимущества:

- Оперативные поставки широкого спектра электронных компонентов отечественного и импортного производства напрямую от производителей и с крупнейших мировых складов;
- Поставка более 17-ти миллионов наименований электронных компонентов;
- Поставка сложных, дефицитных, либо снятых с производства позиций;
- Оперативные сроки поставки под заказ (от 5 рабочих дней);
- Экспресс доставка в любую точку России;
- Техническая поддержка проекта, помощь в подборе аналогов, поставка прототипов;
- Система менеджмента качества сертифицирована по Международному стандарту ISO 9001;
- Лицензия ФСБ на осуществление работ с использованием сведений, составляющих государственную тайну;
- Поставка специализированных компонентов (Xilinx, Altera, Analog Devices, Intersil, Interpoint, Microsemi, Aeroflex, Peregrine, Syfer, Eurofarad, Texas Instrument, Miteq, Cobham, E2V, MA-COM, Hittite, Mini-Circuits, General Dynamics и др.);

Помимо этого, одним из направлений компании «ЭлектроПласт» является направление «Источники питания». Мы предлагаем Вам помощь Конструкторского отдела:

- Подбор оптимального решения, техническое обоснование при выборе компонента;
- Подбор аналогов;
- Консультации по применению компонента;
- Поставка образцов и прототипов;
- Техническая поддержка проекта;
- Защита от снятия компонента с производства.



Как с нами связаться

Телефон: 8 (812) 309 58 32 (многоканальный)

Факс: 8 (812) 320-02-42

Электронная почта: org@eplast1.ru

Адрес: 198099, г. Санкт-Петербург, ул. Калинина, дом 2, корпус 4, литера А.