

## Aluminum Capacitors +125 °C, Miniature, Radial Lead


**FEATURES**

- +125 °C performance
- Suitable for tantalum foil replacement applications
- Low DC leakage currents
- Very stable, long life
- Case sizes through 0.709" x 1.417" [18.0 mm x 36.0 mm]
- Optional third lead on diameters  $\geq 0.492$ " [12.5 mm]
- Material categorization: For definitions of compliance please see [www.vishay.com/doc?99912](http://www.vishay.com/doc?99912)

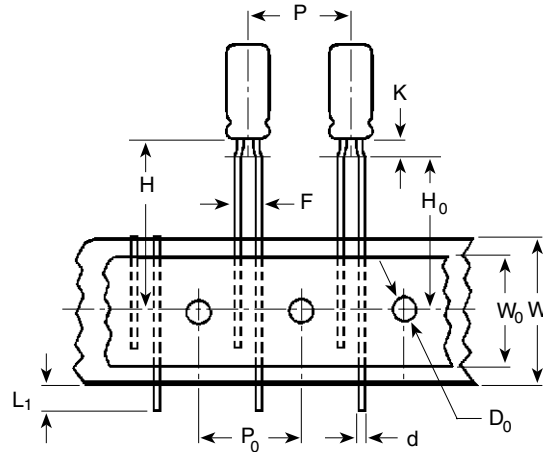


QUICK REFERENCE DATA	
DESCRIPTION	VALUE
Nominal case size Ø D x L in mm	0.236" x 0.433" [6.0 x 11.0] to 0.709" x 1.417" [18.0 x 36.0]
Operating temperature	-40 °C to +125 °C
Rated capacitance range, C <sub>R</sub>	1.0 µF to 6800 µF
Tolerance on C <sub>R</sub>	± 20 %
Rated voltage range, U <sub>R</sub>	6.3 WV <sub>DC</sub> to 63 WV <sub>DC</sub>
Termination	2 and 3 radial leads
Life validation test at 125 °C	2000 h: ΔCAP ≤ 15 % (6.3 WV <sub>DC</sub> to 10 WV <sub>DC</sub> ), ≤ 10 % (16 WV <sub>DC</sub> to 63 WV <sub>DC</sub> ) from initial measurement. ΔDF ≤ 1.25 x initial specified limit. ΔDCL ≤ initial specified limit.
Shelf life at 105 °C	500 h: ΔCAP ≤ 12 % from initial measurement. ΔDF ≤ 1.25 x initial specified limit. ΔDCL ≤ 2.0 x initial specified limit.
DC leakage current (after 2 min charge)	I = 0.01 CV I in µA, C in µF, V in Volts

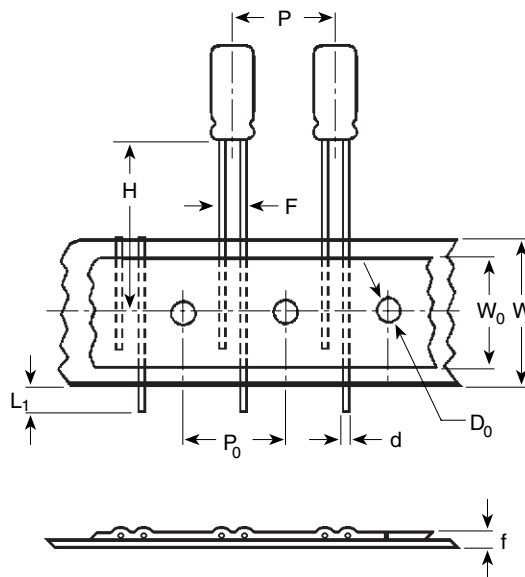
RIPPLE CURRENT MULTIPLIERS				
TEMPERATURE				
AMBIENT TEMPERATURE	MULTIPLIERS			
+125 °C	0.4			
+105 °C	1.0			
+85 °C	1.41			
+75 °C	1.58			
≤ +65 °C	1.73			
FREQUENCY (Hz)				
FREQUENCY (Hz)	50 TO 60	100 TO 120	300 TO 400	1K AND UP
MULTIPLIERS	0.85	1.00	1.05	1.10
	0.80	1.00	1.30	1.40

LOW TEMPERATURE PERFORMANCE	
CAPACITANCE RATIO C <sup>-55 °C</sup> /C <sup>+25 °C</sup> MINIMUM AT 120 Hz	
RATED VOLTAGE (WV <sub>DC</sub> )	CAPACITANCE REMAINING
6.3 to 10	75 %
16 to 25	80 %
36 to 63	85 %
ESR RATIO ESR <sup>-55 °C</sup> /ESR <sup>+25 °C</sup> MAXIMUM AT 120 Hz	
RATED VOLTAGE (WV <sub>DC</sub> )	MULTIPLIER
6.3 to 10	35
16 to 25	30
36 to 63	25

DIMENSIONS in inches [millimeters]										
CASE CODE	NOMINAL		STYLES 2 AND 4		STYLES 3 AND 5		LEAD SPACING		LEAD DIAMETER	
	D	L	D (max.)	L (max.)	D (max.)	L (max.)	S ± 0.024 [0.60]	T ± 0.020 [0.50]	NOMINAL	AWG NO.
BB	0.315 [8.0]	0.472 [12.0]	0.335 [8.5]	0.512 [13.0]	0.335 [8.5]	0.551 [14.0]	0.138 [3.5]	n/a	0.025 [0.63]	22
BD	0.315 [8.0]	0.630 [16.0]	0.335 [8.5]	0.669 [17.0]	0.335 [8.5]	0.709 [18.0]	0.138 [3.5]	n/a	0.025 [0.63]	22
CC	0.394 [10.0]	0.512 [13.0]	0.413 [10.5]	0.563 [14.3]	0.413 [10.5]	0.630 [16.0]	0.197 [5.0]	n/a	0.025 [0.63]	22
CG	0.394 [10.0]	0.787 [20.0]	0.413 [10.5]	0.846 [21.5]	0.413 [10.5]	0.906 [23.0]	0.197 [5.0]	n/a	0.025 [0.63]	22
DG	0.492 [12.5]	0.787 [20.0]	0.512 [13.0]	0.846 [21.5]	0.512 [13.0]	0.906 [23.0]	0.197 [5.0]	0.098 [2.5]	0.028 [0.71]	20
DK	0.492 [12.5]	0.984 [25.0]	0.512 [13.0]	1.043 [26.5]	0.512 [13.0]	1.142 [29.0]	0.197 [5.0]	0.098 [2.5]	0.032 [0.81]	20
EN	0.630 [16.0]	1.260 [32.0]	0.650 [16.5]	1.319 [33.5]	0.650 [16.5]	1.417 [36.0]	0.295 [7.5]	0.150 [3.8]	0.032 [0.81]	20
ER	0.630 [16.0]	1.417 [36.0]	0.650 [16.5]	1.476 [37.5]	0.650 [16.5]	1.575 [40.0]	0.295 [7.5]	0.150 [3.8]	0.032 [0.81]	20
FR	0.709 [18.0]	1.417 [36.0]	0.728 [18.5]	1.476 [37.5]	0.728 [18.5]	1.575 [40.0]	0.295 [7.5]	0.150 [3.8]	0.032 [0.81]	20

**DIMENSIONS in inches [millimeters] AND AVAILABLE FORMS**
**Formed Leads**


<b>DIMENSIONS in inches [millimeters] AND PACKAGING QUANTITIES</b>		
CASE SIZE	F LEAD SPACING	STD. QTY/REEL
0.236 x 0.433 [6.0 x 11.0]	0.197 [5.0]	800
0.315 x 0.472 [8.0 x 12.0]	0.197 [5.0]	700

**Unformed (Straight) Leads**


<b>DIMENSIONS in inches [millimeters] AND PACKAGING QUANTITIES</b>		
CASE SIZE	F LEAD SPACING	STD. QTY/REEL
0.236 x 0.433 [6.0 x 11.0]	0.098 [2.5] <sup>(1)</sup>	800
0.315 x 0.472 [8.0 x 12.0]	0.140 [3.5] <sup>(1)</sup>	700
0.394 x 0.512 [10.0 x 13.0]	0.197 [5.0]	500
0.394 x 0.630 [10.0 x 16.0]	0.197 [5.0]	500
0.394 x 0.787 [10.0 x 20.0]	0.197 [5.0]	500

**Note**
<sup>(1)</sup> Available as special order.



DIMENSIONS in inches [millimeters]					
ITEM	CASE SIZE (Diameter x Length)				
	0.236 x 0.433 [6.0 x 11.0]	0.315 x 0.472 [8.0 x 12.0]	0.394 x 0.512 [10.0 x 13.0]	0.394 x 0.630 [10.0 x 16.0]	0.394 x 0.787 [10.0 x 20.0]
d - Lead-wire diameter	0.025 [0.63]	0.025 [0.63]	0.025 [0.63]	0.025 [0.63]	0.025 [0.63]
P - Pitch of component	0.500 [12.7]	0.500 [12.7]	0.500 [12.7]	0.500 [12.7]	0.500 [12.7]
P <sub>0</sub> - Feed hole pitch	0.500 [12.7]	0.500 [12.7]	0.500 [12.7]	0.500 [12.7]	0.500 [12.7]
F - Lead-to-lead distance	0.197 [5.0]	0.197 [5.0]	0.197 [5.0]	0.197 [5.0]	0.197 [5.0]
K - Clinch height	0.098 [2.5]	0.157 [4.0]	n/a	n/a	n/a
H - Height of component from tape center	0.728 [18.5]	0.787 [20.0]	0.906 [23.0]	0.906 [23.0]	0.906 [23.0]
H <sub>0</sub> - Lead-wire clinch height	0.630 [16.0]	0.630 [16.0]	n/a	n/a	n/a
W - Tape width	0.709 [18.0]	0.709 [18.0]	0.709 [18.0]	0.709 [18.0]	0.709 [18.0]
W <sub>0</sub> - Hold down tape width	0.591 [15.0]	0.591 [15.0]	0.591 [15.0]	0.591 [15.0]	0.591 [15.0]
D <sub>0</sub> - Feed hole diameter	0.157 [4.0]	0.157 [4.0]	0.157 [4.0]	0.157 [4.0]	0.157 [4.0]
t - Total tape thickness	0.028 [0.7]	0.028 [0.7]	0.028 [0.7]	0.028 [0.7]	0.028 [0.7]
L <sub>1</sub> - Maximum lead protrusion	0.118 [3.0]	0.118 [3.0]	0.118 [3.0]	0.118 [3.0]	0.118 [3.0]

**Note**

- Positive leader is standard. Negative leader is available by special order.

**ORDERING EXAMPLE**

Electrolytic capacitor 510DX series: 510DX 227 M 050 DG 2 D

DESCRIPTION	
CODE	EXPLANATION
510DX	Product type
227	Capacitance value (220 μF)
M	Tolerance (M = ± 20 %)
050	Voltage rating at 105 °C (050 = 50 V)
DG	Can size (see "Dimensions" table)
2	Sleeve and sealing (2 = Polyester sleeve)
D	Packaging (D = Bulk; straight leads)

**Note**

- For lead (Pb)-free/RoHS compliant products add suffix "E3" to part number.  
Example: 510DX227M050DG2DE3

ELECTRICAL DATA AND ORDERING INFORMATION							
CAPACITANCE (μF)	PART NUMBER (1)	NOMINAL CASE SIZE D x L IN INCHES (mm)	MAX. ESR AT +25 °C (mΩ)		MAX. RIPPLE AT +105 °C (A)		MAX. Z AT +25 °C (mΩ) 100 Hz
			120 Hz	20 kHz TO 40 kHz	120 Hz	20 kHz TO 40 kHz	
<b>6.3 WV<sub>DC</sub> AT 125 °C, SURGE = 8 V</b>							
330.0	510DX337M6R3CC2D	0.394 x 0.512 [10.0 x 13.0]	1206.0	507.0	0.294	0.454	457.0
1000.0	510DX108M6R3DG2D	0.492 x 0.787 [12.5 x 20.0]	398.0	201.0	0.697	0.984	181.0
1500.0	510DX158M6R3DK2D	0.492 x 0.984 [12.5 x 25.0]	265.0	133.0	0.931	1.313	121.0
4700.0	510DX478M6R3ER2D	0.630 x 1.417 [16.0 x 36.0]	85.0	40.0	2.193	3.193	36.0
<b>10 WV<sub>DC</sub> AT 125 °C, SURGE = 13 V</b>							
150.0	510DX157M010BB2D	0.315 x 0.472 [8.0 x 12.0]	2210.0	948.0	0.182	0.278	854.0
220.0	510DX227M010BD2D	0.315 x 0.630 [8.0 x 16.0]	1507.0	528.0	0.247	0.417	475.0
1200.0	510DX128M010DK2D	0.492 x 0.984 [12.5 x 25.0]	276.0	138.0	0.911	1.287	124.0
4700.0	510DX478M010FR2D	0.709 x 1.417 [18.0 x 36.0]	71.0	37.0	2.582	3.576	33.0
<b>16 WV<sub>DC</sub> AT 125 °C, SURGE = 20 V</b>							
150.0	510DX157M016BD2D	0.315 x 0.630 [8.0 x 16.0]	1415.0	549.0	0.255	0.409	494.0
470.0	510DX477M016DG2D	0.492 x 0.787 [12.5 x 20.0]	451.0	216.0	0.654	0.946	194.0
2200.0	510DX228M016ER2D	0.630 x 1.417 [16.0 x 36.0]	96.0	43.0	2.060	3.078	39.0



ELECTRICAL DATA AND ORDERING INFORMATION							
CAPACITANCE ( $\mu$ F)	PART NUMBER <sup>(1)</sup>	NOMINAL CASE SIZE D x L IN INCHES (mm)	MAX. ESR AT +25 °C (m $\Omega$ )		MAX. RIPPLE AT +105 °C (A)		MAX. Z AT +25 °C (m $\Omega$ ) 100 Hz
			120 Hz	20 kHz TO 40 kHz	120 Hz	20 kHz TO 40 kHz	
<b>25 WV<sub>DC</sub> AT 125 °C, SURGE = 32 V</b>							
100.0	510DX107M025BD2D	0.315 x 0.630 [8.0 x 16.0]	1459.0	571.0	0.251	0.401	514.0
100.0	510DX107M025CC2D	0.394 x 0.512 [10.0 x 13.0]	1459.0	571.0	0.268	0.428	514.0
330.0	510DX337M025DG2D	0.492 x 0.787 [12.5 x 20.0]	442.0	224.0	0.661	0.927	202.0
470.0	510DX477M025DK2D	0.492 x 0.984 [12.5 x 25.0]	310.0	150.0	0.859	1.238	135.0
1500.0	510DX158M025ER2D	0.630 x 1.417 [16.0 x 36.0]	97.0	45.0	2.049	3.009	40.0
<b>35 WV<sub>DC</sub> AT 125 °C, SURGE = 44 V</b>							
47.0	510DX476M035BB2D	0.315 x 0.472 [8.0 x 12.0]	2822.0	1067.0	0.161	0.262	960.0
100.0	510DX107M035CC2D	0.394 x 0.512 [10.0 x 13.0]	1326.0	593.0	0.281	0.421	534.0
220.0	510DX227M035CG2D	0.394 x 0.787 [10.0 x 20.0]	603.0	248.0	0.496	0.774	223.0
470.0	510DX477M035DK2D	0.492 x 0.984 [12.5 x 25.0]	282.0	156.0	0.901	1.214	140.0
1200.0	510DX128M035EN2D	0.630 x 1.260 [16.0 x 32.0]	111.0	58.0	1.826	2.527	52.0
1500.0	510DX158M035ER2D	0.630 x 1.417 [16.0 x 36.0]	88.0	47.0	2.151	2.944	42.0
<b>50 WV<sub>DC</sub> AT 125 °C, SURGE = 63 V</b>							
220.0	510DX227M050DG2D	0.492 x 0.787 [12.5 x 20.0]	543.0	243.0	0.597	0.892	218.0
330.0	510DX337M050DK2D	0.492 x 0.984 [12.5 x 25.0]	362.0	162.0	0.796	1.191	146.0
1000.0	510DX108M050ER2D	0.630 x 1.417 [16.0 x 36.0]	119.0	49.0	1.847	2.883	44.0
<b>63 WV<sub>DC</sub> AT 125 °C, SURGE = 79 V</b>							
47.0	510DX476M063BD2D	0.315 x 0.630 [8.0 x 16.0]	1975.0	642.0	0.215	0.378	578.0
47.0	510DX476M063CC2D	0.394 x 0.512 [10.0 x 13.0]	1975.0	642.0	0.231	0.404	578.0
220.0	510DX227M063DK2D	0.492 x 0.984 [12.5 x 25.0]	422.0	168.0	0.737	1.167	151.0
1000.0	510DX108M063FR2D	0.709 x 1.417 [18.0 x 36.0]	93.0	45.0	2.256	3.243	41.0



## Disclaimer

ALL PRODUCT, PRODUCT SPECIFICATIONS AND DATA ARE SUBJECT TO CHANGE WITHOUT NOTICE TO IMPROVE RELIABILITY, FUNCTION OR DESIGN OR OTHERWISE.

Vishay Intertechnology, Inc., its affiliates, agents, and employees, and all persons acting on its or their behalf (collectively, "Vishay"), disclaim any and all liability for any errors, inaccuracies or incompleteness contained in any datasheet or in any other disclosure relating to any product.

Vishay makes no warranty, representation or guarantee regarding the suitability of the products for any particular purpose or the continuing production of any product. To the maximum extent permitted by applicable law, Vishay disclaims (i) any and all liability arising out of the application or use of any product, (ii) any and all liability, including without limitation special, consequential or incidental damages, and (iii) any and all implied warranties, including warranties of fitness for particular purpose, non-infringement and merchantability.

Statements regarding the suitability of products for certain types of applications are based on Vishay's knowledge of typical requirements that are often placed on Vishay products in generic applications. Such statements are not binding statements about the suitability of products for a particular application. It is the customer's responsibility to validate that a particular product with the properties described in the product specification is suitable for use in a particular application. Parameters provided in datasheets and/or specifications may vary in different applications and performance may vary over time. All operating parameters, including typical parameters, must be validated for each customer application by the customer's technical experts. Product specifications do not expand or otherwise modify Vishay's terms and conditions of purchase, including but not limited to the warranty expressed therein.

Except as expressly indicated in writing, Vishay products are not designed for use in medical, life-saving, or life-sustaining applications or for any other application in which the failure of the Vishay product could result in personal injury or death. Customers using or selling Vishay products not expressly indicated for use in such applications do so at their own risk. Please contact authorized Vishay personnel to obtain written terms and conditions regarding products designed for such applications.

No license, express or implied, by estoppel or otherwise, to any intellectual property rights is granted by this document or by any conduct of Vishay. Product names and markings noted herein may be trademarks of their respective owners.

## Material Category Policy

**Vishay Intertechnology, Inc. hereby certifies that all its products that are identified as RoHS-Compliant fulfill the definitions and restrictions defined under Directive 2011/65/EU of The European Parliament and of the Council of June 8, 2011 on the restriction of the use of certain hazardous substances in electrical and electronic equipment (EEE) - recast, unless otherwise specified as non-compliant.**

**Please note that some Vishay documentation may still make reference to RoHS Directive 2002/95/EC. We confirm that all the products identified as being compliant to Directive 2002/95/EC conform to Directive 2011/65/EU.**

**Vishay Intertechnology, Inc. hereby certifies that all its products that are identified as Halogen-Free follow Halogen-Free requirements as per JEDEC JS709A standards. Please note that some Vishay documentation may still make reference to the IEC 61249-2-21 definition. We confirm that all the products identified as being compliant to IEC 61249-2-21 conform to JEDEC JS709A standards.**



Компания «ЭлектроПласт» предлагает заключение долгосрочных отношений при поставках импортных электронных компонентов на взаимовыгодных условиях!

Наши преимущества:

- Оперативные поставки широкого спектра электронных компонентов отечественного и импортного производства напрямую от производителей и с крупнейших мировых складов;
- Поставка более 17-ти миллионов наименований электронных компонентов;
- Поставка сложных, дефицитных, либо снятых с производства позиций;
- Оперативные сроки поставки под заказ (от 5 рабочих дней);
- Экспресс доставка в любую точку России;
- Техническая поддержка проекта, помощь в подборе аналогов, поставка прототипов;
- Система менеджмента качества сертифицирована по Международному стандарту ISO 9001;
- Лицензия ФСБ на осуществление работ с использованием сведений, составляющих государственную тайну;
- Поставка специализированных компонентов (Xilinx, Altera, Analog Devices, Intersil, Interpoint, Microsemi, Aeroflex, Peregrine, Syfer, Eurofarad, Texas Instrument, Miteq, Cobham, E2V, MA-COM, Hittite, Mini-Circuits, General Dynamics и др.);

Помимо этого, одним из направлений компании «ЭлектроПласт» является направление «Источники питания». Мы предлагаем Вам помощь Конструкторского отдела:

- Подбор оптимального решения, техническое обоснование при выборе компонента;
- Подбор аналогов;
- Консультации по применению компонента;
- Поставка образцов и прототипов;
- Техническая поддержка проекта;
- Защита от снятия компонента с производства.



#### Как с нами связаться

**Телефон:** 8 (812) 309 58 32 (многоканальный)

**Факс:** 8 (812) 320-02-42

**Электронная почта:** [org@eplast1.ru](mailto:org@eplast1.ru)

**Адрес:** 198099, г. Санкт-Петербург, ул. Калинина, дом 2, корпус 4, литера А.