

# ISO5125I Preliminary Data Sheet

High-Voltage Insulated DC/DC Power Supply for SCALE-2 Gate Drivers for 3.3kV, 4.5kV and 6.5kV IGBT Modules

## Abstract

The ISO5125I is a single-channel insulated DC/DC converter suitable as a power supply for IGBT drivers up to 6.5kV. Its output power of 5W enables switching frequencies up to 5kHz for 6.5kV/750A IGBTs. The ISO5125I complements the 1SP0335 high-voltage IGBT drivers.

For drivers adapted to various types of high-power and high-voltage IGBT modules, refer to [www.IGBT-Driver.com/go/plug-and-play](http://www.IGBT-Driver.com/go/plug-and-play)



Fig. 1 Power Supply ISO5125I

## Features

- ✓ Electrical insulation up to 18kV<sub>AC</sub>
- ✓ Creepage distance 60mm
- ✓ Output power 5W
- ✓ No electrolytic capacitors
- ✓ Extremely reliable; long service life
- ✓ Shortens application development time
- ✓ Outstanding coupling capacitance 4pF

## Applications

- ✓ Traction
- ✓ Railroad power supplies
- ✓ Light rail vehicles
- ✓ Industrial drives
- ✓ HVDC
- ✓ Flexible AC transmission systems (FACTS)
- ✓ Medium-voltage converters

Preliminary Data Sheet

**Safety Notice!**

The data contained in this data sheet is intended exclusively for technically trained staff. Handling all high-voltage equipment involves risk to life. Strict compliance with the respective safety regulations is mandatory!

Any handling of electronic devices is subject to the general specifications for protecting electrostatically sensitive devices according to international standard IEC 60747-1, Chapter IX or European standard EN 100015 (i.e. the workplace, tools, etc. must comply with these standards). Otherwise, this product may be damaged.

**Mechanical Dimensions**

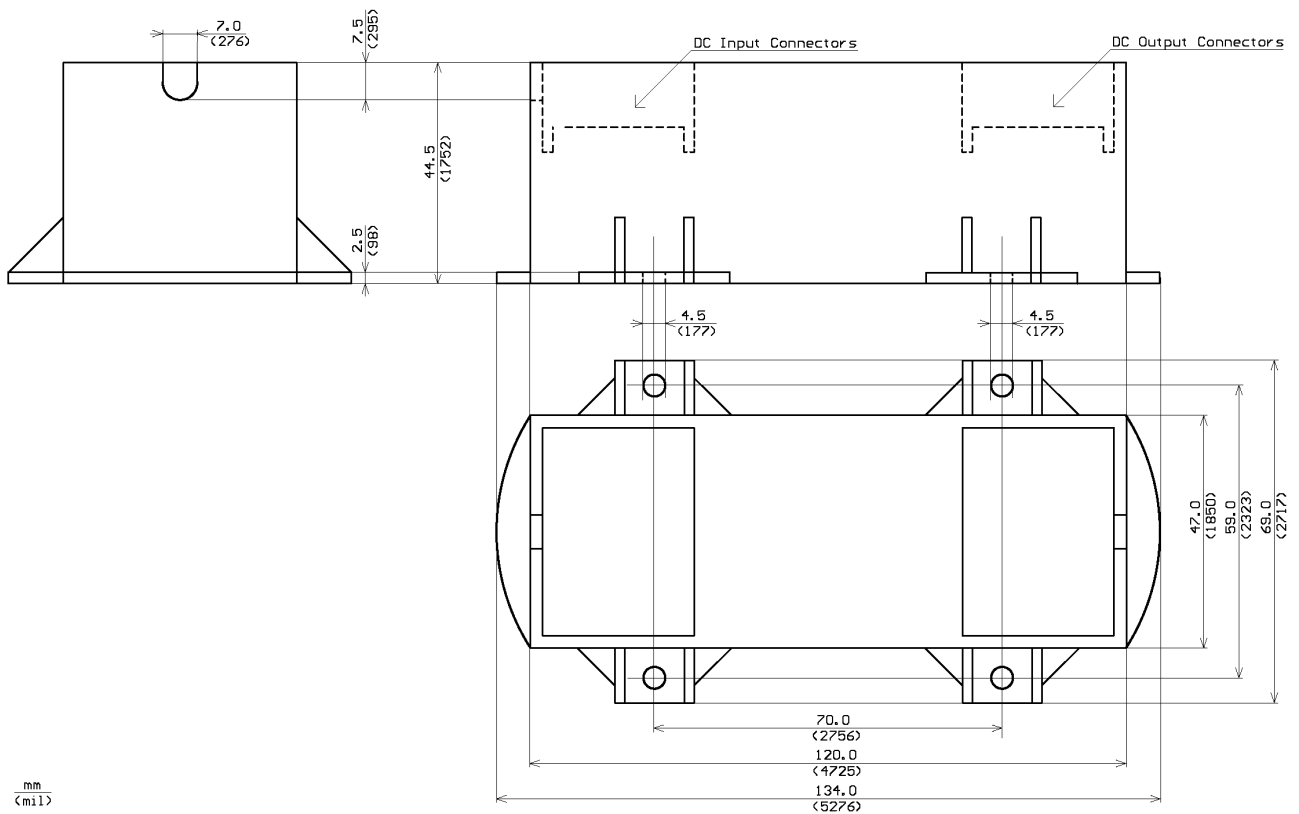


Fig. 2 Mechanical Drawing ISO5125I

## Input and Output Connectors

### DC Input

Two DC input connectors X0 and X0S are available (see Fig. 3 below):

#### X0

1 = GND-IN  
3 = GND-IN

2 =  $V_{IN}$  (+15V referred to GND-IN)

Manufacturer: ERNI, order code 284696. Link: [www.IGBT-Driver.com/go/ext\\_erni](http://www.IGBT-Driver.com/go/ext_erni)

#### X0S

1 = GND-IN

2 =  $V_{IN}$  (+15V referred to GND-IN)

Manufacturer: SAURO, order code MSB02005. Link: [www.IGBT-Driver.com/go/ext\\_sauro](http://www.IGBT-Driver.com/go/ext_sauro)

### DC Output

Two DC output connectors X1 and X1S are available (see Fig. 3 below):

#### X1

1 = GND-OUT  
3 =  $V_{OUT}$  (+25V referred to GND-OUT)

2 =  $V_{OUT}$  (+25V referred to GND-OUT)  
4 = GND-OUT

Manufacturer: ERNI, order code 284697. Link: [www.IGBT-Driver.com/go/ext\\_erni](http://www.IGBT-Driver.com/go/ext_erni)

#### X1S

1 = GND-OUT

2 =  $V_{OUT}$  (+25V referred to GND-OUT)

Manufacturer: SAURO, order code MSB02005. Link: [www.IGBT-Driver.com/go/ext\\_sauro](http://www.IGBT-Driver.com/go/ext_sauro)

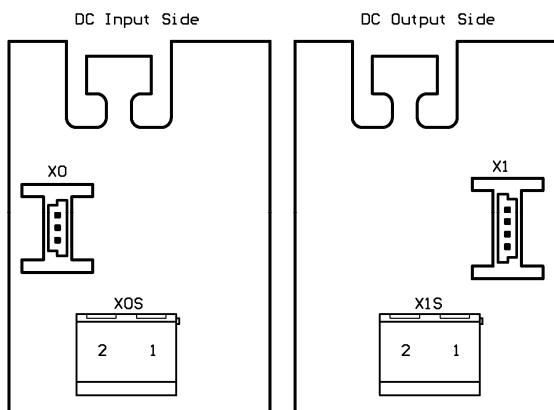


Fig. 3 View of the DC input and output connector sides

Pin 1 and designators IN and OUT are labeled on the PCB.

## Preliminary Data Sheet

### Recommended Cables and PCB Connectors

The following cables and PCB connectors for the X0 and X1 interfaces are recommended and may be ordered from CONCEPT:

Accessories	Interface	Length/Type	CONCEPT Ordering Number
Cable (Input, 3-pin)	X0	100cm	MBC31-100-0
Cable (Output, 4-pin)	X1	35cm	MBC41-035-0
Cable (Output, 4-pin)	X1	45cm	MBC41-045-0
Cable (Output, 4-pin)	X1	70cm	MBC41-070-0
Cable (Output, 4-pin)	X1	110cm	MBC41-110-0
PCB connector (3-pin)	X0	Right angle	MBCON-3-1-0
PCB connector (3-pin)	X0	Vertical	MBCON-3-2-0
PCB connector (4-pin)	X1	Right angle	MBCON-4-1-0
PCB connector (4-pin)	X1	Vertical	MBCON-4-2-0

Refer to [www.igbt-driver.com/go/ext\\_erni](http://www.igbt-driver.com/go/ext_erni) for more information

All cables are delivered with straight plugs on both sides.

The PCB connectors can be ordered as "right angle" types (the cable is plugged in parallel to the PCB) or as "vertical" types (the cable is plugged vertically to the PCB).

**Please note that the interface cable X1 carries high potential. The voltage rating of the recommended cables is only 300V. They must therefore be isolated. The user is fully responsible for providing adequate isolation to the delivered cables.**

### Absolute Maximum Ratings

Parameter	Remarks	Min	Max	Unit
Input voltage	$V_{IN}$ to GND-IN (Note 1)	0	16	V
Average output current	Note 2		200	mA
Average input current	Note 3		500	mA
Output power	Note 2		5	W
External blocking capacitance	Between $V_{OUT}$ and GND-OUT		330	$\mu$ F
Dielectric test voltage	50Hz/1min			
for ISO5125I-45			7.4	kV <sub>RMS</sub>
for ISO5125I-65			10.2	kV <sub>RMS</sub>
for ISO5125I-100			15.2	kV <sub>RMS</sub>
for ISO5125I-120			18.0	kV <sub>RMS</sub>
Operating temperature		-40	+85	°C
Storage temperature		-40	+90	°C

### Recommended Operating Conditions

Power Supply	Remarks	Min	Typ	Max	Unit
Supply voltage $V_{IN}$	To GND-IN (Note 1)	14.5	15	15.5	V

### Electrical Characteristics

All data refer to +25°C and an input voltage of  $V_{IN}=15V$ , unless otherwise specified.

Input Characteristics	Remarks	Min	Typ	Max	Unit
Input current	Without load (Note 4)	30	55	130	mA
	Load 50mA		142		mA
	Load 100mA		230		mA
	Load 200mA		395		mA
Turn-on threshold	Note 5		11.9		V
Turn-off threshold	Note 5		11.7		V
Output Characteristics	Remarks	Min	Typ	Max	Unit
Output voltage	No load (Note 1)		32.0		V
	Load 50mA (Note 1)		26.4		V
	Load 100mA (Note 1)		26		V
	Load 200mA (Note 1)		24.8		V
Output resistance	Notes 1, 2, 6		10.5		$\Omega$
Internal blocking capacitance	Between $V_{OUT}$ and GND-OUT		23		$\mu$ F

Preliminary Data Sheet

Electrical Insulation	Remarks	Min	Typ	Max	Unit
ISO5125I-45:					
Operating voltage	Note 7			4.5	kV <sub>peak</sub>
Dielectric test voltage (50Hz/1min)	Note 8			7.4	kV <sub>RMS</sub>
Partial discharge ext. voltage	Note 9	3.6			kV <sub>RMS</sub>
ISO5125I-65:					
Operating voltage	Note 7			6.5	kV <sub>peak</sub>
Dielectric test voltage (50Hz/1min)	Note 8			10.2	kV <sub>RMS</sub>
Partial discharge ext. voltage	Note 9	5.1			kV <sub>RMS</sub>
ISO5125I-100:					
Operating voltage	Note 7			10.0	kV <sub>peak</sub>
Dielectric test voltage (50Hz/1min)	Note 8			15.2	kV <sub>RMS</sub>
Partial discharge ext. voltage	Note 9	7.8			kV <sub>RMS</sub>
ISO5125I-120:					
Operating voltage	Note 7			12.0	kV <sub>peak</sub>
Dielectric test voltage (50Hz/1min)	Note 8			18.0	kV <sub>RMS</sub>
Partial discharge ext. voltage	Note 9	9.4			kV <sub>RMS</sub>
Creepage distance	Note 10	60			mm
Clearance distance	Note 10	52			mm
Coupling capacitance	Between V <sub>IN</sub> and V <sub>OUT</sub>		4		pF

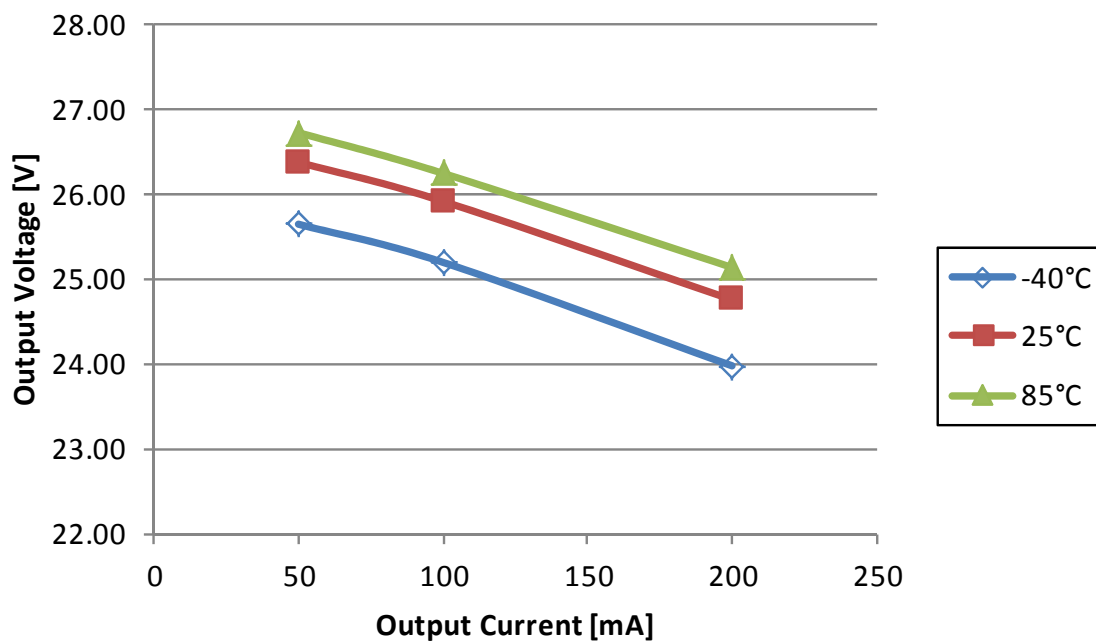


Fig. 4 Output Characteristics with V<sub>IN</sub>=15V

**Footnotes to the key data**

- 1) The output voltage is not regulated and tracks the input voltage. Input voltages higher than those specified can lead to destruction of the DC/DC converter or the gate driver.
- 2) The output voltage is not regulated and decreases with increasing load current. The DC/DC converter is not protected against overload.
- 3) Refers to the static case. The input current increases with decreasing temperature. The maximum value refers to an operating temperature of -40°C.
- 4) Refers to the static case without load. The input current increases with decreasing temperature. The maximum value refers to an operating temperature of -40°C.
- 5) Under-voltage monitoring of the input voltage. For a voltage lower than this limit, the DC/DC converter is switched off.
- 6) For an output current in the range of 50mA to 200mA. (For SCALE-2 high-voltage IGBT driver 1SP0335, the standby supply current is 45mA.)
- 7) Maximum continuous or repeatedly applied DC voltage or peak value of the repeatedly applied AC voltage between input and output or between input or output and the mounting plane.
- 8) The dielectric test voltage may be applied only once during one minute. It should be noted that with this (strictly speaking obsolete) test method, some (minor) damage occurs to the insulation layers due to the partial discharge. Consequently, this test is not performed at CONCEPT as a series test. In the case of repeated insulation tests (e.g. module test, equipment test, system test), the subsequent tests should be performed with a lower test voltage: the test voltage is reduced by 10% for each additional test. The more modern if more elaborate partial-discharge measurement is better suited than such test methods as it is almost entirely non-destructive.
- 9) Every production sample shipped to customers has undergone 100% testing at the given value or higher.
- 10) Distance between input and output or between input or output and the mounting plane. Mounting screws have not been considered.

---

## Preliminary Data Sheet

### **The Information Source: SCALE-2 Driver Data Sheets**

CONCEPT offers the widest selection of gate drivers for power MOSFETs and IGBTs for almost any application needs. The largest website on gate-drive circuitry anywhere contains all data sheets, application notes and manuals, technical information and support sections: [www.IGBT-Driver.com](http://www.IGBT-Driver.com)

### **Quite Special: Customized SCALE-2 Drivers**

If you need an IGBT driver that is not included in the delivery range, please don't hesitate to contact CONCEPT or your CONCEPT sales partner.

CONCEPT has more than 20 years experience in the development and manufacture of intelligent gate drivers for power MOSFETs and IGBTs and has already implemented a large number of customized solutions.

### **Technical Support**

CONCEPT provides expert help with your questions and problems:

[www.IGBT-Driver.com/go/support](http://www.IGBT-Driver.com/go/support)

### **Quality**

The obligation to high quality is one of the central features laid down in the mission statement of CT-Concept Technologie AG. The quality management system covers all stages of product development and production up to delivery. The drivers of the SCALE-2 series are manufactured to the ISO9001:2000 quality standard.

### **Legal Disclaimer**

This data sheet specifies devices but cannot promise to deliver any specific characteristics. No warranty or guarantee is given – either expressly or implicitly – regarding delivery, performance or suitability.

CT-Concept Technologie AG reserves the right to make modifications to its technical data and product specifications at any time without prior notice. The general terms and conditions of delivery of CT-Concept Technologie AG apply.



### Ordering Information

The general terms and conditions of delivery of CT-Concept Technologie AG apply.

IGBT voltage class	DC/DC converter type #
3300V/4500V	ISO5125I-45
6500V	ISO5125I-65
6500V Multilevel	ISO5125I-100
6500V Multilevel	ISO5125I-120

### Information about Other Products

#### For drivers adapted to high-voltage or high-power IGBT modules

Direct link: [www.IGBT-Driver.com/go/plug-and-play](http://www.IGBT-Driver.com/go/plug-and-play)

#### For other drivers and evaluation systems

Please click: [www.IGBT-Driver.com](http://www.IGBT-Driver.com)

### Manufacturer

CT-Concept Technologie AG  
 Intelligent Power Electronics  
 Renferstrasse 15  
 CH-2504 Biel-Bienne  
 Switzerland

Tel. +41 - 32 - 344 47 47  
 Fax +41 - 32 - 344 47 40

E-mail [Info@IGBT-Driver.com](mailto:Info@IGBT-Driver.com)  
 Internet [www.IGBT-Driver.com](http://www.IGBT-Driver.com)

© Copyright 2010...2011 by CT-Concept Technologie AG - Switzerland.  
 We reserve the right to make any technical modifications without prior notice.

All rights reserved.  
 Version of 2011-07-29

# Mouser Electronics

Authorized Distributor

Click to View Pricing, Inventory, Delivery & Lifecycle Information:

## Power Integrations:

[MBCON-3-2-0](#) [MBC31-100-0](#) [MBCON-3-1-0](#)



Компания «ЭлектроПласт» предлагает заключение долгосрочных отношений при поставках импортных электронных компонентов на взаимовыгодных условиях!

Наши преимущества:

- Оперативные поставки широкого спектра электронных компонентов отечественного и импортного производства напрямую от производителей и с крупнейших мировых складов;
- Поставка более 17-ти миллионов наименований электронных компонентов;
- Поставка сложных, дефицитных, либо снятых с производства позиций;
- Оперативные сроки поставки под заказ (от 5 рабочих дней);
- Экспресс доставка в любую точку России;
- Техническая поддержка проекта, помощь в подборе аналогов, поставка прототипов;
- Система менеджмента качества сертифицирована по Международному стандарту ISO 9001;
- Лицензия ФСБ на осуществление работ с использованием сведений, составляющих государственную тайну;
- Поставка специализированных компонентов (Xilinx, Altera, Analog Devices, Intersil, Interpoint, Microsemi, Aeroflex, Peregrine, Syfer, Eurofarad, Texas Instrument, Miteq, Cobham, E2V, MA-COM, Hittite, Mini-Circuits, General Dynamics и др.);

Помимо этого, одним из направлений компании «ЭлектроПласт» является направление «Источники питания». Мы предлагаем Вам помощь Конструкторского отдела:

- Подбор оптимального решения, техническое обоснование при выборе компонента;
- Подбор аналогов;
- Консультации по применению компонента;
- Поставка образцов и прототипов;
- Техническая поддержка проекта;
- Защита от снятия компонента с производства.



#### Как с нами связаться

**Телефон:** 8 (812) 309 58 32 (многоканальный)

**Факс:** 8 (812) 320-02-42

**Электронная почта:** [org@eplast1.ru](mailto:org@eplast1.ru)

**Адрес:** 198099, г. Санкт-Петербург, ул. Калинина, дом 2, корпус 4, литера А.