

Material:

- Body: Polyamide PA 6
25 % Glass-fiber Reinforced
- Seal: Tefabloc

Characteristics:

- PG thread
- Multi-holed seal inserts

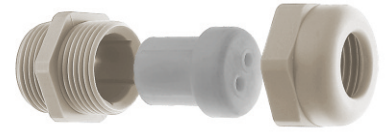
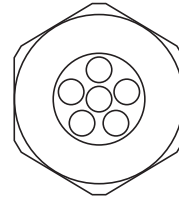
Technical properties:

- Gas- and watertight
- Completely twist protected
- Combinable with various sealing inserts

Applications:

- Machines and devices
- Measuring and control engineering
- Plant installations

Locknuts and seal rings sold separately, see pages 23 and 35.



See page 7 for dimensions.

| |
|---|
| Temperature Range PA 6 -30 to 120°C (-22 to 248°F) |
|---|

| Outer thread | Hole Quantity | Hole diameter mm | Cat. No. Light Grey | Cat. No. Black | Std. Pk. | Outer thread | Hole Quantity | Hole diameter mm | Cat. No. Light Grey | Cat. No. Black | Std. Pk. |
|--------------|---------------|------------------|---------------------|----------------|----------|--------------|---------------|------------------|---------------------|----------------|----------|
| PG 7 | 1 | 4 | 5315800 | 5315600 | 50 | PG 16 | 4 | 4 | 5315862 | 5315662 | 50 |
| PG 7 | 1 | 5 | 5315801 | 5315601 | 50 | PG 16 | 4 | 5 | 5315863 | 5315663 | 50 |
| PG 9 | 1 | 5 | 5315810 | 5315610 | 50 | PG 16 | 4 | 6 | 5315864 | 5315664 | 50 |
| PG 9 | 2 | 1 | 5315811 | 5315611 | 50 | PG 16 | 5 | 4 | 5315865 | 5315665 | 50 |
| PG 9 | 2 | 3 | 5315812 | 5315612 | 50 | PG 16 | 5 | 5 | 5315866 | 5315666 | 50 |
| PG 9 | 2 | 3.5 | 5315813 | 5315613 | 50 | PG 16 | 6 | 4 | 5315867 | 5315667 | 50 |
| PG 9 | 2 | 4 | 5315814 | 5315614 | 50 | PG 16 | 7 | 4 | 5315868 | 5315668 | 50 |
| PG 9 | 3 | 3 | 5315815 | 5315615 | 50 | PG 21 | 2 | 4.5 | 5315869 | 5315669 | 20 |
| PG 9 | 4 | 3 | 5315816 | 5315616 | 50 | PG 21 | 2 | 8 | 5315870 | 5315670 | 20 |
| PG 9 | 4 | 4 | 5315817 | 5315617 | 50 | PG 21 | 2 | 8.7 | 5315871 | 5315671 | 20 |
| PG 11 | 2 | 2.3 | 5315820 | 5315620 | 50 | PG 21 | 2 | 9 | 5315872 | 5315672 | 20 |
| PG 11 | 2 | 3 | 5315821 | 5315621 | 50 | PG 21 | 2 | 11 | 5315873 | 5315673 | 20 |
| PG 11 | 2 | 3.5 | 5315110 | 5315500 | 50 | PG 21 | 3 | 7 | 5315210 | 5315520 | 20 |
| PG 11 | 2 | 4 | 5315822 | 5315622 | 50 | PG 21 | 3 | 8 | 5315211 | 5315521 | 20 |
| PG 11 | 2 | 5 | 5315111 | 5315501 | 50 | PG 21 | 3 | 9 | 5315874 | 5315674 | 20 |
| PG 11 | 2 | 6 | 5315112 | 5315502 | 50 | PG 21 | 4 | 5 | 5315875 | 5315675 | 20 |
| PG 11 | 3 | 3 | 5315823 | 5315623 | 50 | PG 21 | 4 | 6 | 5315212 | 5315522 | 20 |
| PG 11 | 3 | 3.5 | 5315113 | 5315503 | 50 | PG 21 | 4 | 7.5 | 5315876 | 5315676 | 20 |
| PG 11 | 3 | 4 | 5315824 | 5315624 | 50 | PG 21 | 4 | 8 | 5315213 | 5315523 | 20 |
| PG 11 | 3 | 5 | 5315114 | 5315504 | 50 | PG 21 | 5 | 5 | 5315877 | 5315677 | 20 |
| PG 11 | 3 | 5.3 | 5315825 | 5315625 | 50 | PG 21 | 5 | 6 | 5315214 | 5315524 | 20 |
| PG 11 | 4 | 1.5 | 5315826 | 5315626 | 50 | PG 21 | 5 | 6.5 | 5315215 | 5315525 | 20 |
| PG 11 | 4 | 3.5 | 5315827 | 5315627 | 50 | PG 21 | 6 | 4 | 5315878 | 5315678 | 20 |
| PG 11 | 6 | 2 | 5315828 | 5315628 | 50 | PG 21 | 6 | 5 | 5315879 | 5315679 | 20 |
| PG 11 | 6 | 2.5 | 5315829 | 5315629 | 50 | PG 21 | 6 | 6 | 5315216 | 5315526 | 20 |
| PG 13.5 | 2 | 3 | 5315830 | 5315630 | 50 | PG 21 | 6 | 6.5 | 5315217 | 5315527 | 20 |
| PG 13.5 | 2 | 5 | 5315831 | 5315631 | 50 | PG 21 | 6 | 7 | 5315218 | 5315528 | 20 |
| PG 13.5 | 2 | 6 | 5315130 | 5315510 | 50 | PG 21 | 7 | 6 | 5315219 | 5315529 | 20 |
| PG 13.5 | 3 | 2 | 5315832 | 5315632 | 50 | PG 21 | 8 | 4 | 5315880 | 5315683 | 20 |
| PG 13.5 | 3 | 3 | 5315833 | 5315633 | 50 | PG 21 | 8 | 5 | 5315220 | 5315530 | 20 |
| PG 13.5 | 3 | 4 | 5315834 | 5315634 | 50 | PG 21 | 11 | 5 | 5315221 | 5315531 | 20 |
| PG 13.5 | 3 | 5.3 | 5315835 | 5315635 | 50 | PG 21 | 21 | 2 | 5315881 | 5315684 | 20 |
| PG 13.5 | 3 | 6 | 5315836 | 5315636 | 50 | PG 21 | 28 | 3 | 5315222 | 5315532 | 20 |
| PG 13.5 | 4 | 3 | 5315837 | 5315637 | 50 | PG 29 | 2 | 9 | 5315289 | 5315690 | 20 |
| PG 13.5 | 4 | 4 | 5315838 | 5315638 | 50 | PG 29 | 2 | 11 | 5315891 | 5315691 | 20 |
| PG 13.5 | 4 | 5 | 5315839 | 5315639 | 50 | PG 29 | 2 | 12 | 5315892 | 5315692 | 20 |
| PG 13.5 | 4 | 5.3 | 5315840 | 5315640 | 50 | PG 29 | 3 | 9 | 5315893 | 5315693 | 20 |
| PG 13.5 | 6 | 3.5 | 5315841 | 5315641 | 50 | PG 29 | 3 | 11 | 5315894 | 5315694 | 20 |
| PG 13.5 | 10 | 2 | 5315842 | 5315642 | 50 | PG 29 | 4 | 8 | 5315290 | 5315540 | 20 |
| PG 16 | 2 | 4 | 5315850 | 5315650 | 50 | PG 29 | 4 | 9 | 5315895 | 5315695 | 20 |
| PG 16 | 2 | 5 | 5315851 | 5315651 | 50 | PG 29 | 4 | 10 | 5315896 | 5315696 | 20 |
| PG 16 | 2 | 6 | 5315852 | 5315652 | 50 | PG 29 | 6 | 6 | 5315897 | 5315697 | 20 |
| PG 16 | 2 | 7 | 5315160 | 5315515 | 50 | PG 29 | 6 | 6.5 | 5315292 | 5315542 | 20 |
| PG 16 | 2 | 8 | 5315853 | 5315653 | 50 | PG 29 | 6 | 7 | 5315293 | 5315543 | 20 |
| PG 16 | 2 | 9 | 5315854 | 5315654 | 50 | PG 29 | 7 | 6 | 5315294 | 5315544 | 20 |
| PG 16 | 3 | 3 | 5315855 | 5315655 | 50 | PG 29 | 7 | 7 | 5315898 | 5315698 | 20 |
| PG 16 | 3 | 4 | 5315856 | 5315656 | 50 | PG 29 | 8 | 5 | 5315899 | 5315699 | 20 |
| PG 16 | 3 | 5 | 5315857 | 5315516 | 50 | PG 29 | 8 | 6 | 5315295 | 5315545 | 20 |
| PG 16 | 3 | 5.6 | 5315858 | 5315658 | 50 | PG 29 | 10 | 6 | 5315900 | 5315700 | 20 |
| PG 16 | 3 | 6 | 5315859 | 5315659 | 50 | PG 29 | 11 | 5 | 5315296 | 5315546 | 20 |
| PG 16 | 3 | 7 | 5315860 | 5315660 | 50 | PG 29 | 28 | 3 | 5315297 | 5315547 | 20 |
| PG 16 | 3 | 8 | 5315861 | 5315661 | 50 | | | | | | |

Cable Gland / Industrial Multi-Conductor (Metric) - Polyamide

Material:

- Body: polyamide PA 6
25% Glass-fiber Reinforced
- Seal: Tefabloc

Characteristics:

- Metric Thread
- Multi-holed seal inserts

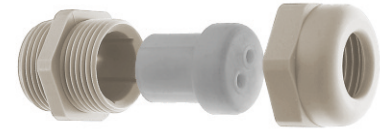
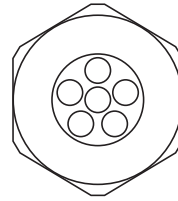
Technical properties:

- Gas- and watertight
- Completely twist protected
- Combinable with various sealing inserts

Applications:

- Machines and devices
- Measuring and control engineering
- Plant installations

**Locknuts and seal rings
sold separately,
see pages 23 and 35.**



Temperature Range

PA 6

-30 to 120°C
(-22 to 248°F)



See page 7 for dimensions.

| Outer thread | Hole Quantity | Hole diameter mm | Cat. No. Light Grey | Cat. No. Black | Std. Pk. | Outer thread | Hole Quantity | Hole diameter mm | Cat. No. Light Grey | Cat. No. Black | Std. Pk. |
|---------------|---------------|------------------|---------------------|----------------|----------|--------------|---------------|------------------|---------------------|----------------|----------|
| M 16 x 1.5 | 2 | 1 | 5316100 | 5318100 | 50 | M 25 x 1.5 | 4 | 6 | 5316305 | 5318305 | 20 |
| M 16 x 1.5 | 2 | 3 | 5316101 | 5318101 | 50 | M 25 x 1.5 | 5 | 5 | 5316306 | 5318306 | 20 |
| M 16 x 1.5 | 2 | 3.5 | 5316102 | 5318102 | 50 | M 25 x 1.5 | 5 | 6 | 5316307 | 5318307 | 20 |
| M 16 x 1.5 | 2 | 4 | 5316103 | 5318103 | 50 | M 25 x 1.5 | 5 | 6.5 | 5316308 | 5318308 | 20 |
| M 16 x 1.5 | 3 | 3 | 5316104 | 5318104 | 50 | M 25 x 1.5 | 6 | 4 | 5316309 | 5318309 | 20 |
| M 20 x 1.5/13 | 2 | 3 | 5316200 | 5318200 | 50 | M 25 x 1.5 | 6 | 5 | 5316310 | 5318310 | 20 |
| M 20 x 1.5/16 | 2 | 4 | 5316201 | 5318201 | 50 | M 25 x 1.5 | 8 | 4 | 5316311 | 5318311 | 20 |
| M 20 x 1.5/16 | 2 | 5 | 5316202 | 5318202 | 50 | M 25 x 1.5 | 8 | 5 | 5316312 | 5318312 | 20 |
| M 20 x 1.5/16 | 2 | 6 | 5316203 | 5318203 | 50 | M 25 x 1.5 | 21 | 2 | 5316313 | 5318313 | 20 |
| M 20 x 1.5/16 | 2 | 7 | 5316204 | 5318204 | 50 | M 32 x 1.5 | 2 | 9 | 5316400 | 5318400 | 20 |
| M 20 x 1.5/13 | 3 | 2 | 5316205 | 5318205 | 50 | M 32 x 1.5 | 2 | 11 | 5316401 | 5318401 | 20 |
| M 20 x 1.5/16 | 3 | 3 | 5316206 | 5318206 | 50 | M 32 x 1.5 | 2 | 12 | 5316402 | 5318402 | 20 |
| M 20 x 1.5/16 | 3 | 4 | 5316207 | 5318207 | 50 | M 32 x 1.5 | 3 | 9 | 5316403 | 5318403 | 20 |
| M 20 x 1.5/16 | 3 | 5 | 5316208 | 5318208 | 50 | M 32 x 1.5 | 3 | 11 | 5316404 | 5318404 | 20 |
| M 20 x 1.5/16 | 3 | 5.6 | 5316209 | 5318209 | 50 | M 32 x 1.5 | 4 | 8 | 5316405 | 5318405 | 20 |
| M 20 x 1.5/16 | 3 | 6 | 5316210 | 5318210 | 50 | M 32 x 1.5 | 4 | 9 | 5316406 | 5318406 | 20 |
| M 20 x 1.5/13 | 4 | 3 | 5316211 | 5318211 | 50 | M 32 x 1.5 | 4 | 10 | 5316407 | 5318407 | 20 |
| M 20 x 1.5/16 | 4 | 4 | 5316212 | 5318212 | 50 | M 32 x 1.5 | 6 | 6 | 5316408 | 5318408 | 20 |
| M 20 x 1.5/16 | 5 | 4 | 5316213 | 5318213 | 50 | M 32 x 1.5 | 6 | 6.5 | 5316409 | 5318409 | 20 |
| M 20 x 1.5/16 | 5 | 5 | 5316214 | 5318214 | 50 | M 32 x 1.5 | 6 | 7 | 5316410 | 5318410 | 20 |
| M 20 x 1.5/13 | 6 | 3.5 | 5316215 | 5318215 | 50 | M 32 x 1.5 | 7 | 6 | 5316411 | 5318411 | 20 |
| M 20 x 1.5/16 | 6 | 4 | 5316216 | 5318216 | 50 | M 32 x 1.5 | 7 | 7 | 5316412 | 5318412 | 20 |
| M 20 x 1.5/13 | 10 | 2 | 5316217 | 5318217 | 50 | M 32 x 1.5 | 8 | 5 | 5316413 | 5318413 | 20 |
| M 25 x 1.5 | 2 | 4.5 | 5316300 | 5318300 | 20 | M 32 x 1.5 | 8 | 6 | 5316414 | 5318414 | 20 |
| M 25 x 1.5 | 2 | 8 | 5316301 | 5318301 | 20 | M 32 x 1.5 | 10 | 6 | 5316415 | 5318415 | 20 |
| M 25 x 1.5 | 3 | 7 | 5316302 | 5318302 | 20 | M 32 x 1.5 | 11 | 5 | 5316416 | 5318416 | 20 |
| M 25 x 1.5 | 3 | 8 | 5316303 | 5318303 | 20 | M 32 x 1.5 | 28 | 3 | 5316417 | 5318417 | 20 |
| M 25 x 1.5 | 4 | 5 | 5316304 | 5318304 | 20 | | | | | | |

Cable Gland / Industrial Multi-Conductor (PG) - Nickel-Plated Brass

Material:

- Body: Nickel-Plated Brass
- Seal: Tefabloc
- Sealing ring for outer thread: Nitril

Characteristics:

- PG thread
- Multi-holed seal inserts

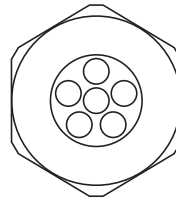
Technical properties:

- Gas- and watertight
- Completely twist protected
- Combinable with various sealing inserts

Applications:

- Machines and devices
- Measuring and control engineering
- Plant installations

*Locknuts sold separately,
see page 24.*



| |
|---|
| Temperature Range MS -25 to 120°C (-13 to 248°F) |
|---|



See page 12 for dimensions.

| Outer thread | Hole Quantity | Hole diameter mm | Cat. No. | Std. Pk. | Outer thread | Hole Quantity | Hole diameter mm | Cat. No. | Std. Pk. |
|--------------|---------------|------------------|----------|----------|--------------|---------------|------------------|----------|----------|
| PG 7 | 1 | 4 | 4248640 | 50 | PG 16 | 4 | 4 | 4248688 | 50 |
| PG 7 | 1 | 5 | 4248641 | 50 | PG 16 | 4 | 5 | 4248689 | 50 |
| PG 9 | 1 | 5 | 4248642 | 50 | PG 16 | 4 | 6 | 4248694 | 50 |
| PG 9 | 2 | 1 | 4248643 | 50 | PG 16 | 5 | 4 | 4248690 | 50 |
| PG 9 | 2 | 3 | 4248644 | 50 | PG 16 | 5 | 5 | 4248691 | 50 |
| PG 9 | 2 | 3.5 | 4248645 | 50 | PG 16 | 6 | 4 | 4248692 | 50 |
| PG 9 | 2 | 4 | 4248646 | 50 | PG 16 | 7 | 4 | 4248693 | 50 |
| PG 9 | 3 | 3 | 4248647 | 50 | PG 21 | 2 | 4.5 | 4248696 | 20 |
| PG 9 | 4 | 3 | 4248648 | 50 | PG 21 | 2 | 8 | 4248697 | 20 |
| PG 9 | 4 | 4 | 4248649 | 50 | PG 21 | 2 | 8.7 | 4248698 | 20 |
| PG 11 | 2 | 2.3 | 4248650 | 50 | PG 21 | 2 | 9 | 4248699 | 20 |
| PG 11 | 2 | 3 | 4248651 | 50 | PG 21 | 2 | 11 | 4248700 | 20 |
| PG 11 | 2 | 3.5 | 4248405 | 50 | PG 21 | 3 | 7 | 4248542 | 20 |
| PG 11 | 2 | 4 | 4248652 | 50 | PG 21 | 3 | 8 | 4248531 | 20 |
| PG 11 | 2 | 5 | 4248660 | 50 | PG 21 | 3 | 9 | 4248701 | 20 |
| PG 11 | 2 | 6 | 4248661 | 50 | PG 21 | 4 | 5 | 4248702 | 20 |
| PG 11 | 3 | 3 | 4248653 | 50 | PG 21 | 4 | 6 | 4248529 | 20 |
| PG 11 | 3 | 3.5 | 4248407 | 50 | PG 21 | 4 | 7.5 | 4248709 | 20 |
| PG 11 | 3 | 4 | 4248654 | 50 | PG 21 | 4 | 8 | 4248703 | 20 |
| PG 11 | 3 | 5 | 4248662 | 50 | PG 21 | 5 | 5 | 4248704 | 20 |
| PG 11 | 3 | 5.3 | 4248655 | 50 | PG 21 | 5 | 6 | 4248539 | 20 |
| PG 11 | 4 | 1.5 | 4248656 | 50 | PG 21 | 5 | 6.5 | 4248541 | 20 |
| PG 11 | 4 | 3.5 | 4248657 | 50 | PG 21 | 6 | 4 | 4248705 | 20 |
| PG 11 | 6 | 2 | 4248658 | 50 | PG 21 | 6 | 5 | 4248706 | 20 |
| PG 11 | 6 | 2.5 | 4248659 | 50 | PG 21 | 6 | 6 | 4248713 | 20 |
| PG 13.5 | 2 | 3 | 4248663 | 50 | PG 21 | 6 | 6.5 | 4248710 | 20 |
| PG 13.5 | 2 | 5 | 4248664 | 50 | PG 21 | 6 | 7 | 4248715 | 20 |
| PG 13.5 | 2 | 6 | 4248404 | 50 | PG 21 | 7 | 6 | 4248714 | 20 |
| PG 13.5 | 3 | 2 | 4248665 | 50 | PG 21 | 8 | 4 | 4248707 | 20 |
| PG 13.5 | 3 | 3 | 4248666 | 50 | PG 21 | 8 | 5 | 4248543 | 20 |
| PG 13.5 | 3 | 4 | 4248667 | 50 | PG 21 | 11 | 5 | 4248712 | 20 |
| PG 13.5 | 3 | 5.3 | 4248668 | 50 | PG 21 | 21 | 2 | 4248708 | 20 |
| PG 13.5 | 3 | 6 | 4248669 | 50 | PG 21 | 28 | 3 | 4248711 | 20 |
| PG 13.5 | 4 | 3 | 4248670 | 50 | PG 29 | 2 | 9 | 4248716 | 20 |
| PG 13.5 | 4 | 4 | 4248671 | 50 | PG 29 | 2 | 11 | 4248717 | 20 |
| PG 13.5 | 4 | 5 | 4248673 | 50 | PG 29 | 3 | 9 | 4248719 | 20 |
| PG 13.5 | 4 | 5.3 | 4248672 | 50 | PG 29 | 3 | 11 | 4248720 | 20 |
| PG 13.5 | 6 | 3.5 | 4248674 | 50 | PG 29 | 4 | 8 | 4248629 | 20 |
| PG 13.5 | 10 | 2 | 4248675 | 50 | PG 29 | 4 | 9 | 4248721 | 20 |
| PG 16 | 2 | 4 | 4248678 | 50 | PG 29 | 4 | 10 | 4248722 | 20 |
| PG 16 | 2 | 5 | 4248679 | 50 | PG 29 | 6 | 6 | 4248627 | 20 |
| PG 16 | 2 | 6 | 4248680 | 50 | PG 29 | 6 | 6.5 | 4248610 | 20 |
| PG 16 | 2 | 7 | 4248409 | 50 | PG 29 | 6 | 7 | 4248614 | 20 |
| PG 16 | 2 | 8 | 4248681 | 50 | PG 29 | 7 | 6 | 4248631 | 20 |
| PG 16 | 2 | 9 | 4248682 | 50 | PG 29 | 7 | 7 | 4248723 | 20 |
| PG 16 | 3 | 3 | 4248683 | 50 | PG 29 | 8 | 5 | 4248724 | 20 |
| PG 16 | 3 | 4 | 4248684 | 50 | PG 29 | 8 | 6 | 4248632 | 20 |
| PG 16 | 3 | 5 | 4248677 | 50 | PG 29 | 10 | 6 | 4248725 | 20 |
| PG 16 | 3 | 5.6 | 4248685 | 50 | PG 29 | 11 | 5 | 4248634 | 20 |
| PG 16 | 3 | 6 | 4248686 | 50 | PG 29 | 28 | 3 | 4248612 | 20 |
| PG 16 | 3 | 7 | 4248695 | 50 | | | | | |
| PG 16 | 3 | 8 | 4248687 | 50 | | | | | |

Material:

- Body: Nickel-Plated Brass
- Seal: Tefabloc
- Sealing ring for outer thread: Nitril

Characteristics:

- Metric thread
- Multi-holed seal inserts
- Extended thread available

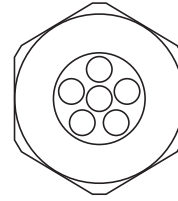
Technical properties:

- Gas- and watertight
- Completely twist protected
- Combinable with various sealing inserts

Applications:

- Machines and devices
- Measuring and control engineering
- Plant installations

Locknuts sold separately,
see page 24.



| |
|---|
| Temperature Range MS -25 to 120°C (-13 to 248°F) |
|---|



See page 12 for dimensions.

| Outer thread | Hole Quantity | Hole diameter mm | Cat. No. | Std. Pk. | Outer thread | Hole Quantity | Hole diameter mm | Cat. No. | Std. Pk. |
|---------------|---------------|------------------|----------|----------|---------------|---------------|------------------|----------|----------|
| M 16 x 1.5/9 | 2 | 1 | 4249600 | 50 | M 32 x 1.5/29 | 3 | 9 | 4249677 | 20 |
| M 16 x 1.5/9 | 2 | 3 | 4249601 | 50 | M 32 x 1.5/29 | 3 | 11 | 4249678 | 20 |
| M 16 x 1.5/9 | 2 | 3.5 | 4249602 | 50 | M 32 x 1.5/21 | 4 | 5 | 4249679 | 20 |
| M 16 x 1.5/9 | 2 | 4 | 4249603 | 50 | M 32 x 1.5/21 | 4 | 6 | 4249680 | 20 |
| M 16 x 1.5/9 | 3 | 3 | 4249604 | 50 | M 32 x 1.5/29 | 4 | 8 | 4249681 | 20 |
| M 20 x 1.5/11 | 2 | 2.3 | 4249610 | 50 | M 32 x 1.5/29 | 4 | 9 | 4249682 | 20 |
| M 20 x 1.5/13 | 2 | 3 | 4249611 | 50 | M 32 x 1.5/29 | 4 | 10 | 4249683 | 20 |
| M 20 x 1.5/11 | 2 | 3.5 | 4249612 | 50 | M 32 x 1.5/21 | 5 | 5 | 4249684 | 20 |
| M 20 x 1.5/11 | 2 | 4 | 4249613 | 50 | M 32 x 1.5/21 | 5 | 6 | 4249685 | 20 |
| M 20 x 1.5/13 | 2 | 5 | 4249614 | 50 | M 32 x 1.5/21 | 5 | 6.5 | 4249686 | 20 |
| M 20 x 1.5/13 | 2 | 6 | 4249615 | 50 | M 32 x 1.5/21 | 6 | 4 | 4249687 | 20 |
| M 20 x 1.5/13 | 3 | 2 | 4249616 | 50 | M 32 x 1.5/21 | 6 | 5 | 4249688 | 20 |
| M 20 x 1.5/13 | 3 | 3 | 4249617 | 50 | M 32 x 1.5/29 | 6 | 6 | 4249689 | 20 |
| M 20 x 1.5/11 | 3 | 3.5 | 4249618 | 50 | M 32 x 1.5/29 | 6 | 6.5 | 4249690 | 20 |
| M 20 x 1.5/13 | 3 | 4 | 4249619 | 50 | M 32 x 1.5/29 | 6 | 7 | 4249691 | 20 |
| M 20 x 1.5/13 | 3 | 5.3 | 4249620 | 50 | M 32 x 1.5/29 | 7 | 6 | 4249692 | 20 |
| M 20 x 1.5/11 | 4 | 1.5 | 4249621 | 50 | M 32 x 1.5/29 | 7 | 7 | 4249693 | 20 |
| M 20 x 1.5/13 | 4 | 3 | 4249622 | 50 | M 32 x 1.5/21 | 8 | 4 | 4249694 | 20 |
| M 20 x 1.5/11 | 4 | 3.5 | 4249623 | 50 | M 32 x 1.5/29 | 8 | 5 | 4249695 | 20 |
| M 20 x 1.5/13 | 4 | 4 | 4249624 | 50 | M 32 x 1.5/29 | 8 | 6 | 4249696 | 20 |
| M 20 x 1.5/11 | 6 | 2 | 4249625 | 50 | M 32 x 1.5/29 | 10 | 6 | 4249697 | 20 |
| M 20 x 1.5/11 | 6 | 2.5 | 4249626 | 50 | M 32 x 1.5/29 | 11 | 5 | 4249698 | 20 |
| M 20 x 1.5/13 | 6 | 3.5 | 4249627 | 50 | M 32 x 1.5/21 | 21 | 2 | 4249699 | 20 |
| M 20 x 1.5/13 | 10 | 2 | 4249628 | 50 | M 32 x 1.5/29 | 28 | 3 | 4249701 | 20 |
| M 25 x 1.5/16 | 2 | 4 | 4249640 | 20 | | | | | |
| M 25 x 1.5/21 | 2 | 4.5 | 4249641 | 20 | | | | | |
| M 25 x 1.5/16 | 2 | 5 | 4249642 | 20 | | | | | |
| M 25 x 1.5/16 | 2 | 6 | 4249643 | 20 | | | | | |
| M 25 x 1.5/16 | 2 | 7 | 4249644 | 20 | | | | | |
| M 25 x 1.5/21 | 2 | 8 | 4249645 | 20 | | | | | |
| M 25 x 1.5/16 | 3 | 3 | 4249646 | 20 | | | | | |
| M 25 x 1.5/16 | 3 | 4 | 4249647 | 20 | | | | | |
| M 25 x 1.5/16 | 3 | 5 | 4249648 | 20 | | | | | |
| M 25 x 1.5/16 | 3 | 5.6 | 4249649 | 20 | | | | | |
| M 25 x 1.5/16 | 3 | 6 | 4249650 | 20 | | | | | |
| M 25 x 1.5/21 | 3 | 7 | 4249651 | 20 | | | | | |
| M 25 x 1.5/21 | 3 | 8 | 4249652 | 20 | | | | | |
| M 25 x 1.5/16 | 4 | 4 | 4249653 | 20 | | | | | |
| M 25 x 1.5/21 | 4 | 5 | 4249654 | 20 | | | | | |
| M 25 x 1.5/21 | 4 | 6 | 4249655 | 20 | | | | | |
| M 25 x 1.5/16 | 5 | 4 | 4249656 | 20 | | | | | |
| M 25 x 1.5/21 | 5 | 5 | 4249657 | 20 | | | | | |
| M 25 x 1.5/21 | 5 | 6 | 4249658 | 20 | | | | | |
| M 25 x 1.5/21 | 5 | 6.5 | 4249659 | 20 | | | | | |
| M 25 x 1.5/21 | 6 | 4 | 4249660 | 20 | | | | | |
| M 25 x 1.5/21 | 6 | 5 | 4249661 | 20 | | | | | |
| M 25 x 1.5/21 | 8 | 4 | 4249662 | 20 | | | | | |
| M 25 x 1.5/21 | 8 | 5 | 4249663 | 20 | | | | | |
| M 25 x 1.5/21 | 21 | 2 | 4249664 | 20 | | | | | |
| M 32 x 1.5/21 | 2 | 4.5 | 4249670 | 20 | | | | | |
| M 32 x 1.5/21 | 2 | 8 | 4249671 | 20 | | | | | |
| M 32 x 1.5/29 | 2 | 9 | 4249672 | 20 | | | | | |
| M 32 x 1.5/29 | 2 | 11 | 4249673 | 20 | | | | | |
| M 32 x 1.5/29 | 2 | 12 | 4249674 | 20 | | | | | |
| M 32 x 1.5/21 | 3 | 7 | 4249675 | 20 | | | | | |
| M 32 x 1.5/21 | 3 | 8 | 4249676 | 20 | | | | | |



Компания «ЭлектроПласт» предлагает заключение долгосрочных отношений при поставках импортных электронных компонентов на взаимовыгодных условиях!

Наши преимущества:

- Оперативные поставки широкого спектра электронных компонентов отечественного и импортного производства напрямую от производителей и с крупнейших мировых складов;
- Поставка более 17-ти миллионов наименований электронных компонентов;
- Поставка сложных, дефицитных, либо снятых с производства позиций;
- Оперативные сроки поставки под заказ (от 5 рабочих дней);
- Экспресс доставка в любую точку России;
- Техническая поддержка проекта, помощь в подборе аналогов, поставка прототипов;
- Система менеджмента качества сертифицирована по Международному стандарту ISO 9001;
- Лицензия ФСБ на осуществление работ с использованием сведений, составляющих государственную тайну;
- Поставка специализированных компонентов (Xilinx, Altera, Analog Devices, Intersil, Interpoint, Microsemi, Aeroflex, Peregrine, Syfer, Eurofarad, Texas Instrument, Miteq, Cobham, E2V, MA-COM, Hittite, Mini-Circuits, General Dynamics и др.);

Помимо этого, одним из направлений компании «ЭлектроПласт» является направление «Источники питания». Мы предлагаем Вам помощь Конструкторского отдела:

- Подбор оптимального решения, техническое обоснование при выборе компонента;
- Подбор аналогов;
- Консультации по применению компонента;
- Поставка образцов и прототипов;
- Техническая поддержка проекта;
- Защита от снятия компонента с производства.



Как с нами связаться

Телефон: 8 (812) 309 58 32 (многоканальный)

Факс: 8 (812) 320-02-42

Электронная почта: org@eplast1.ru

Адрес: 198099, г. Санкт-Петербург, ул. Калинина, дом 2, корпус 4, литера А.