

AMPHENOL PART NUMBER CONFIGURATION
U95 - T 1 X 1 - 1 X X X

HEAT SINK OPTION

- 1** = NO HEAT SINK OR CLIP SHIPPED
- 5** = ROUND PIN STYLE (H=6.5mm; SAN HEIGHT)--(NOT AVAILABLE WITH QUAD LIGHT PIPE)
- 6** = ROUND PIN STYLE (H=4.2mm; PCI HEIGHT)--(NOT AVAILABLE WITH QUAD LIGHT PIPE)
- 7** = ROUND PIN STYLE (H=13.5mm; TALL)--(NOT AVAILABLE WITH QUAD LIGHT PIPE)
- A** = SQUARE PIN STYLE (H=6.5mm; SAN HEIGHT)
- B** = SQUARE PIN STYLE (H=4.2mm; PCI HEIGHT)
- C** = SQUARE PIN STYLE (H=13.5mm; TALL)
- N** = PIN-FIN STYLE FOR SIDE TO SIDE AIR FLOW (H=6.5mm; SAN HEIGHT)
- P** = PIN-FIN STYLE FOR SIDE TO SIDE AIR FLOW (H=4.2mm; PCI HEIGHT)
- R** = PIN-FIN STYLE FOR SIDE TO SIDE AIR FLOW (H=13.5mm; TALL)
- Y** = EXTRUDED FIN STYLE FOR FRONT - BACK AIR FLOW (H=6.94mm)
- W** = EXTRUDED FIN STYLE FOR FRONT - BACK AIR FLOW (H=8.72mm)

NOTE: FOR DIMENSION "H" SEE SHEET 2

PACKAGING OPTION

- 1** = TRAY PACKAGING (LIGHT PIPE AND/OR HEAT SINK SHIPPED LOOSE IF ORDERED)
- A** = TRAY PACKAGING (LIGHT PIPE AND/OR HEAT SINK ASSEMBLED TO THE CAGE)

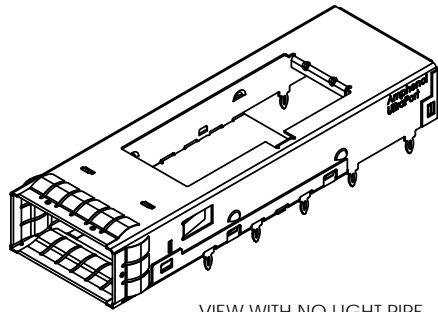
OPTIONAL LIGHT PIPE

- 0** = NO LIGHT PIPE
- 1** = DUAL BARREL LIGHT PIPE - ROUND OUTLET
- 7** = SINGLE BARREL LIGHT PIPE - ROUND OUTLET
- 4** = QUAD BARREL LIGHT PIPE - ROUND OUTLET

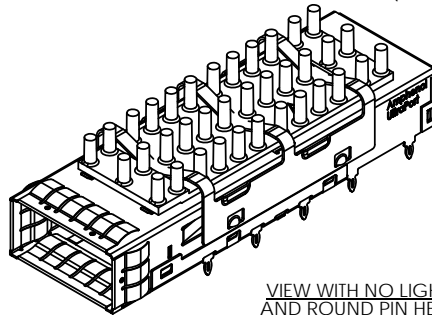
OPTIONAL DUST COVER (CONDUCTIVE)

- 0** = WITHOUT DUST COVER
- D** = WITH DUST COVER (SHIPPED LOOSE PIECE)

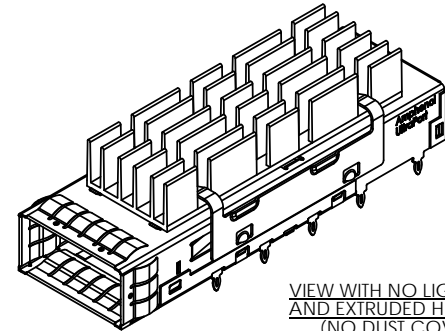
| REVISIONS | | | |
|-----------|---|------------|-------|
| REV | DESCRIPTION, ECN, EAR NO. | DATE | APP'D |
| H | ADDED HEAT SINK OPTIONS | JAN. 16/15 | AC |
| J | PCB FRONT EDGE NOTE ADDED | APR 22/15 | AC |
| K | COMPLIANT PIN LEAD IN TIP SHORTENED FOR THINNER B2B PCB APPLICATION | JUL 10/15 | AC |



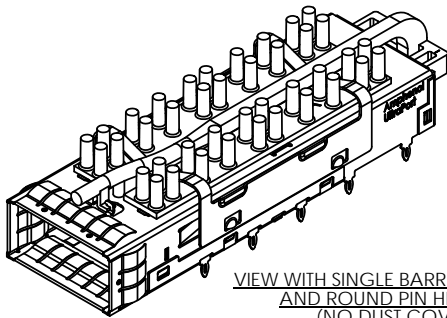
VIEW WITH NO LIGHT PIPE AND NO HEAT SINK (NO DUST COVER)
(P/N U95-T111-1001)



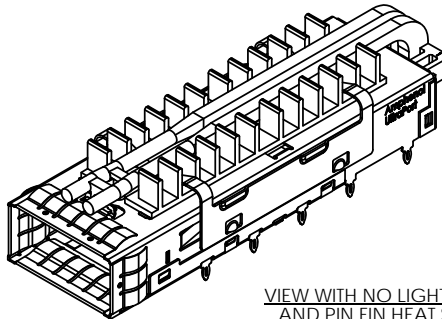
VIEW WITH NO LIGHT PIPE AND ROUND PIN HEAT SINK (NO DUST COVER)
(P/N U95-T151-100A)



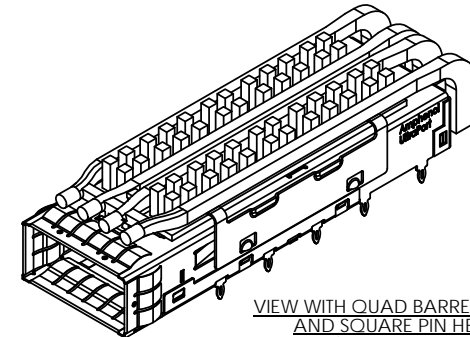
VIEW WITH NO LIGHT PIPE AND EXTRUDED HEAT SINK (NO DUST COVER)
(P/N U95-T1W1-100A)



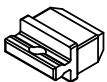
VIEW WITH SINGLE BARREL LIGHT PIPE AND ROUND PIN HEAT SINK (NO DUST COVER)
(P/N U95-T151-107A)



VIEW WITH NO LIGHT PIPE AND PIN FIN HEAT SINK (NO DUST COVER)
(P/N U95-T1N1-101A)



VIEW WITH QUAD BARREL LIGHT PIPE AND SQUARE PIN HEAT SINK (NO DUST COVER)
(P/N U95-T1A1-104A)



CONDUCTIVE DUST COVER SHOWN (OPTIONAL) (SHIPPED LOOSE)
(P/N U79-111-9000-P)

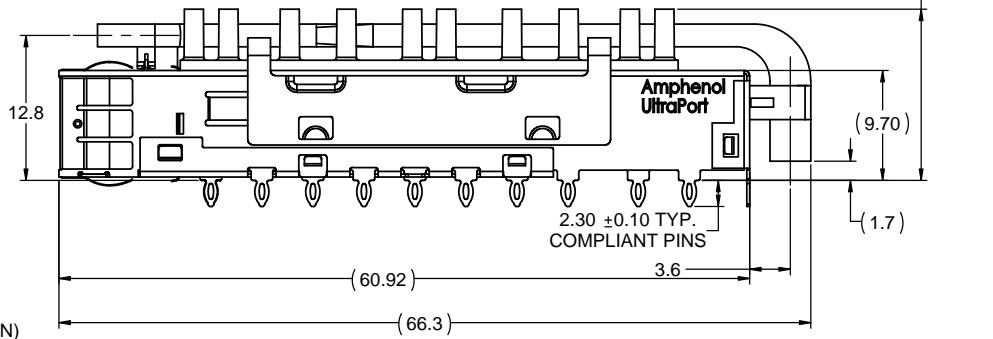
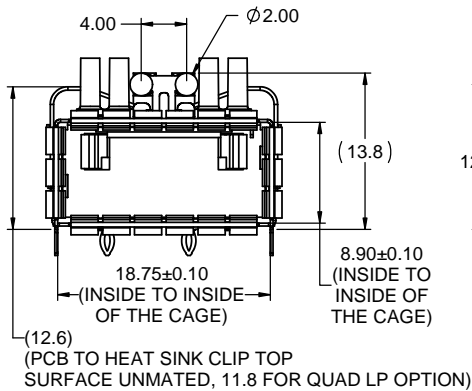


| | | | | |
|----------------------------|-------------|------------------------|------|----------------------|
| UNLESS SPECIFIED OTHERWISE | | DRAWN | A.C. | JUL5/13 |
| UNIT | MILLIMETERS | CHECKED | ZLJ | JUL5/13 |
| REFERENCE IN PARENTHESES | | M.E. APP'D | | |
| | | Q.A. APP'D | | |
| GENERAL TOLERANCES | | DWG APP'D | ZLJ | JUL5/13 |
| 1 DECIMAL PLACE | ±0.2 | ENG. REL. NO. | - | |
| 2 DECIMAL PLACES | ±0.15 | REF. | | |
| ANGULAR DEGREES | ±1° | THIRD ANGLE PROJECTION | | DO NOT SCALE DRAWING |

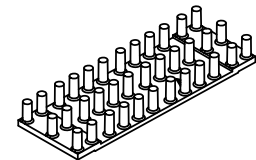
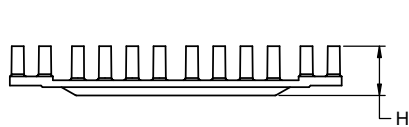
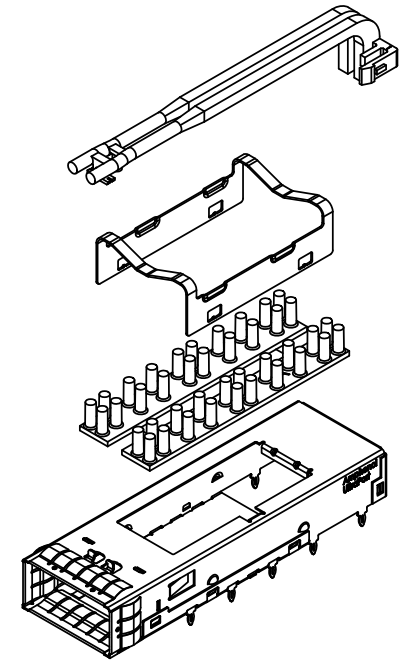
Amphenol High Speed Interconnects
A Division of Amphenol Corp. www.amphenol-highspeed.com

UltraPort QSFP 1X1 CAGE ASSEMBLY THRU BEZEL TWO REAR PIN WITH HEAT SINK AND LIGHT PIPE OPTIONS

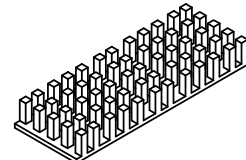
| | | | | |
|-------------|------------------------|-----------|---|-----------------|
| DWG. NO. | P-U95-T1X1-1XXX | | | REV K |
| CODE ID NO. | 03554 | DWG SIZE: | C | SCALE: 3:1 |
| | | | | SHEET 1 OF 5 |



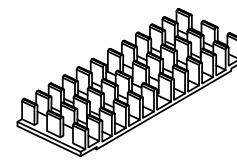
VIEW WITH DUAL BARREL LIGHT PIPE
AND ROUND PIN HEAT SINK
(NO DUST COVER)
(P/N U95-T151-101A)



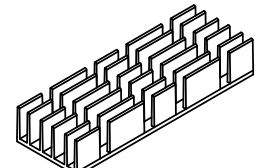
ROUND PIN STYLE WITHOUT LP
(FOR REFERENCE ONLY)



SQUARE PIN STYLE WITHOUT LP
(FOR REFERENCE ONLY)



PIN FIN STYLE WITHOUT LP
(FOR REFERENCE ONLY)

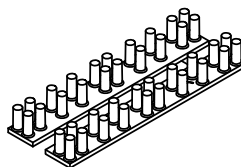


FIN STYLE WITHOUT LP
(FOR REFERENCE ONLY)

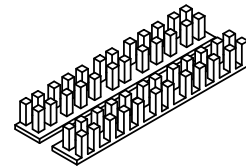
| PART NUMBER | DIM "J" | DIM "H" |
|---------------------|---------|---------|
| U95-T15(N, A)1-1XXX | 15.10 | 6.50 |
| U95-T16(P, B)1-1XXX | 12.80 | 4.20 |
| U95-T17(R, C)1-1XXX | 22.10 | 13.50 |
| U95-T1Y1-1XXX | 15.54 | 6.94 |
| U95-T1W1-1XXX | 17.32 | 8.72 |

NOTES:

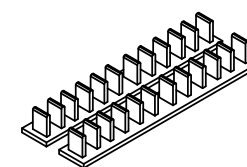
- MATERIAL:
CAGE AND EMI SPRINGS: COPPER ALLOY
CAGE PLATING: 2.54µm [100µ"] MIN. NICKEL.
LIGHT PIPE: GE LEXAN RESIN, CLEAR OPTICAL GRADE
HEAT SINK: ALUMINUM ALLOY, NICKEL PLATED
HEAT SINK CLIP: STAINLESS STEEL
DUST COVER: CONDUCTIVE RUBBER
- DUST COVER IS SHIPPED AS A LOOSE PIECE IF ORDERED.
- DIMENSION "J" IS IN THE UNPLUGGED STATE



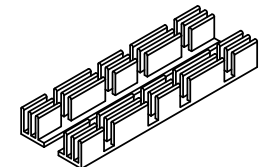
ROUND PIN STYLE WITH LP
(FOR REFERENCE ONLY)
LAYOUT MAY VARY W/ LP OPTION)



SQUARE PIN STYLE WITH LP
(FOR REFERENCE ONLY)
LAYOUT MAY VARY W/ LP OPTION)



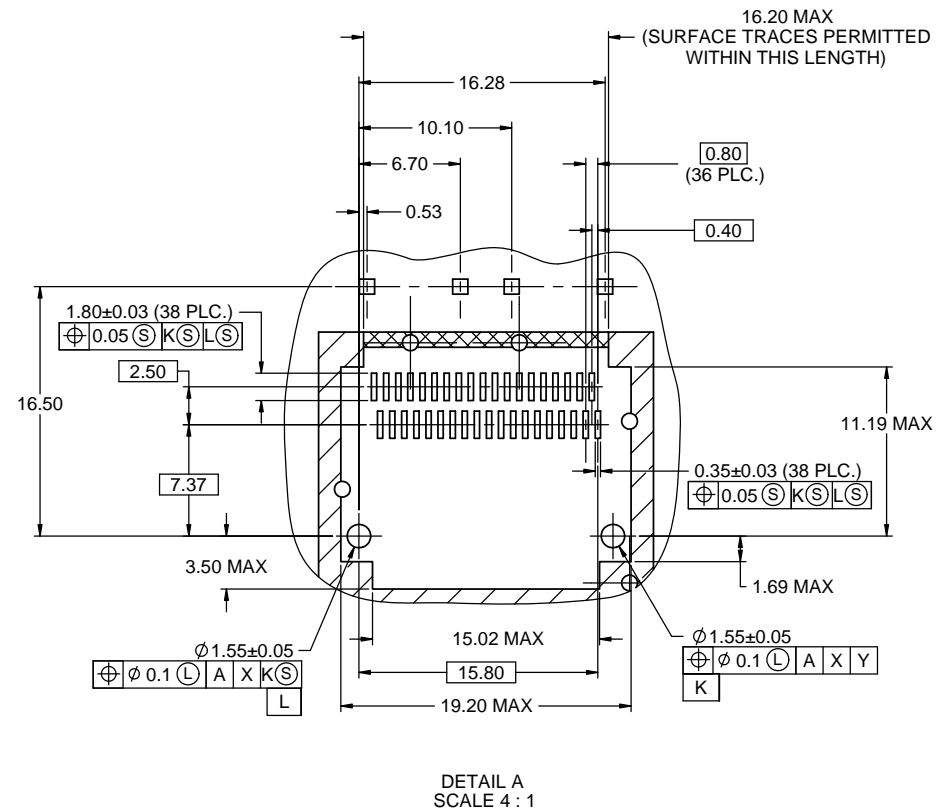
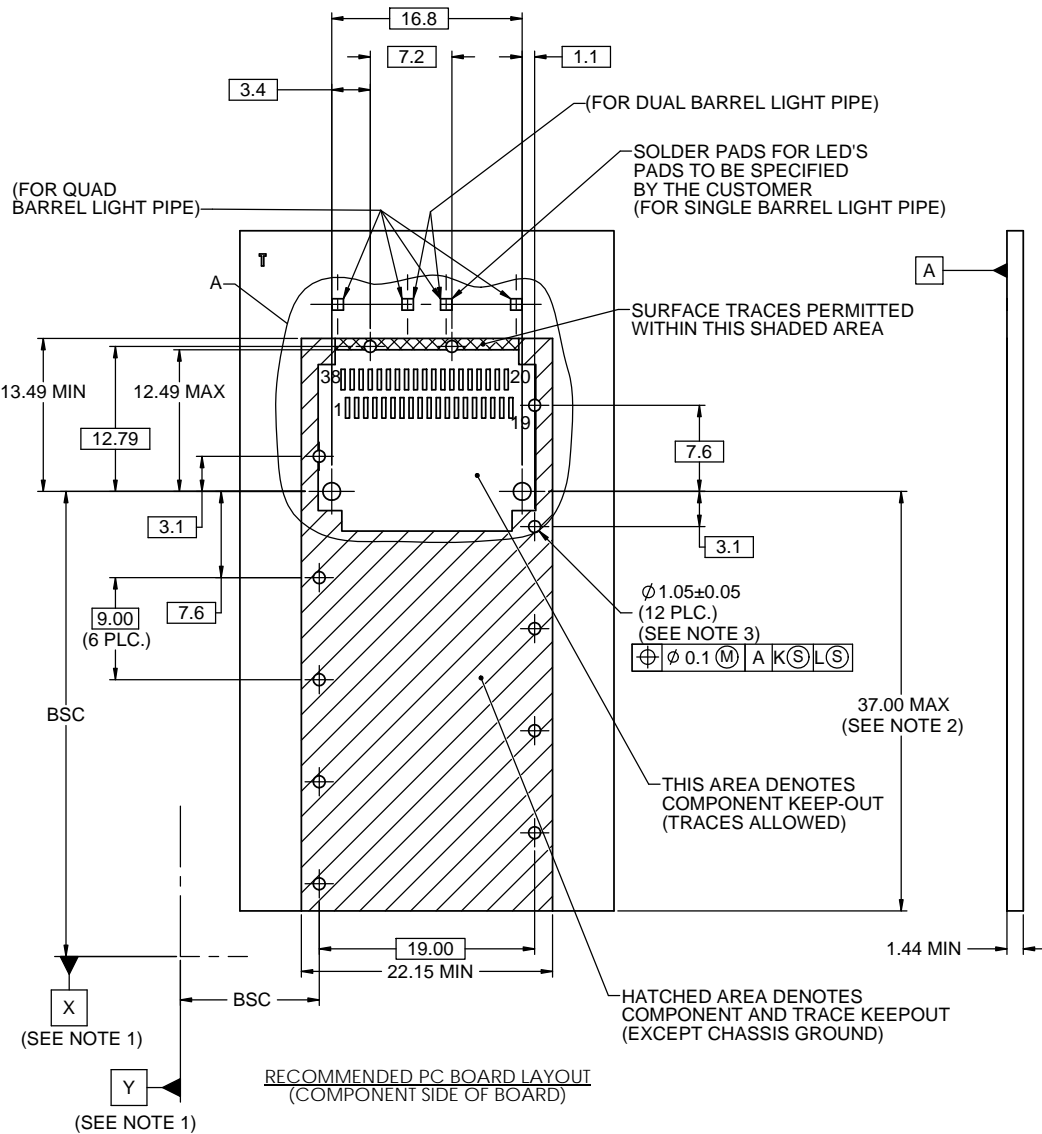
PIN FIN STYLE WITH LP
(FOR REFERENCE ONLY)
LAYOUT MAY VARY W/ LP OPTION)



FIN STYLE WITH LP
(FOR REFERENCE ONLY)
LAYOUT MAY VARY W/ LP OPTION)

| | | | | |
|----------------------------|-------------|------------------------|------|---------|
| UNLESS SPECIFIED OTHERWISE | | DRAWN | A.C. | JUL5/13 |
| UNIT | MILLIMETERS | CHECKED | ZLJ | JUL5/13 |
| REFERENCE IN PARENTHESES | | M.E. APP'D | | |
| | | Q.A. APP'D | | |
| GENERAL TOLERANCES | | DWG APP'D | ZLJ | JUL5/13 |
| 1 DECIMAL PLACE | ±0.2 | ENG. REL. NO. | - | |
| 2 DECIMAL PLACES | ±0.15 | REF. | | |
| ANGULAR DEGREES | ±1° | THIRD ANGLE PROJECTION | | |
| | | DO NOT SCALE DRAWING | | |

| | | | |
|---|-------|--------------|----------|
| Amphenol High Speed Interconnects A Division of Amphenol Corp. www.amphenol-highspeed.com | | | |
| UltraPort QSFP 1X1 CAGE ASSEMBLY THRU BEZEL TWO REAR PIN WITH HEAT SINK AND LIGHT PIPE OPTIONS | | | |
| DWG. NO. | | | REV |
| P-U95-T1X1-1XXX | | | K |
| CODE ID NO. | 03554 | DWG SIZE: | C |
| SCALE: | 3:1 | SHEET 2 OF 5 | |



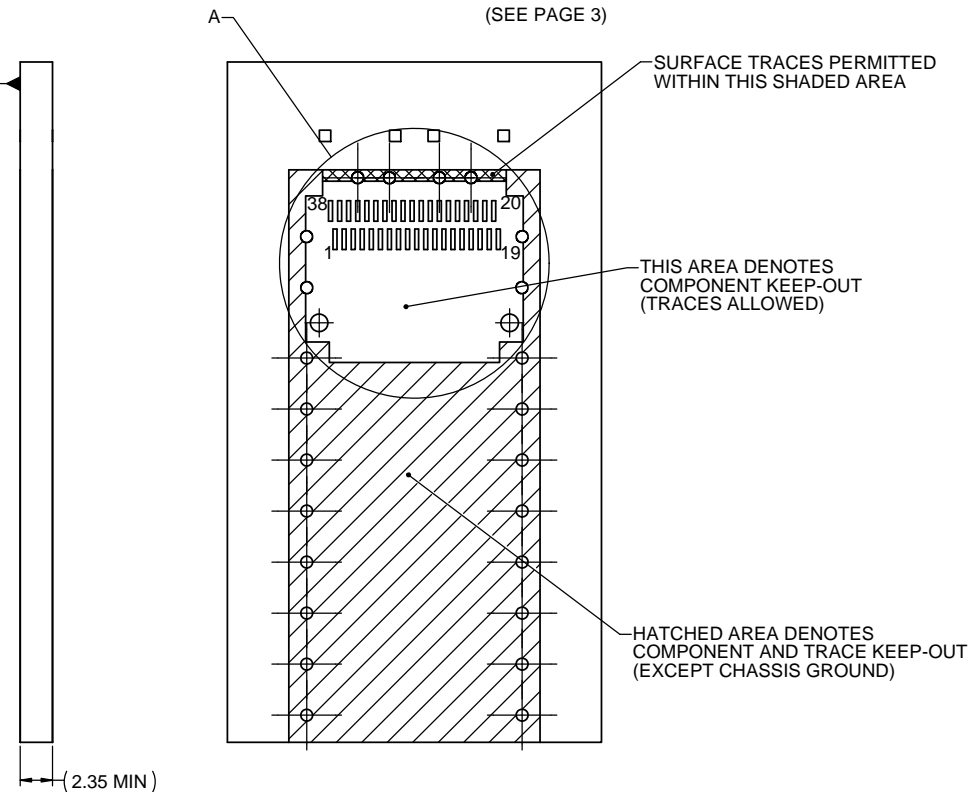
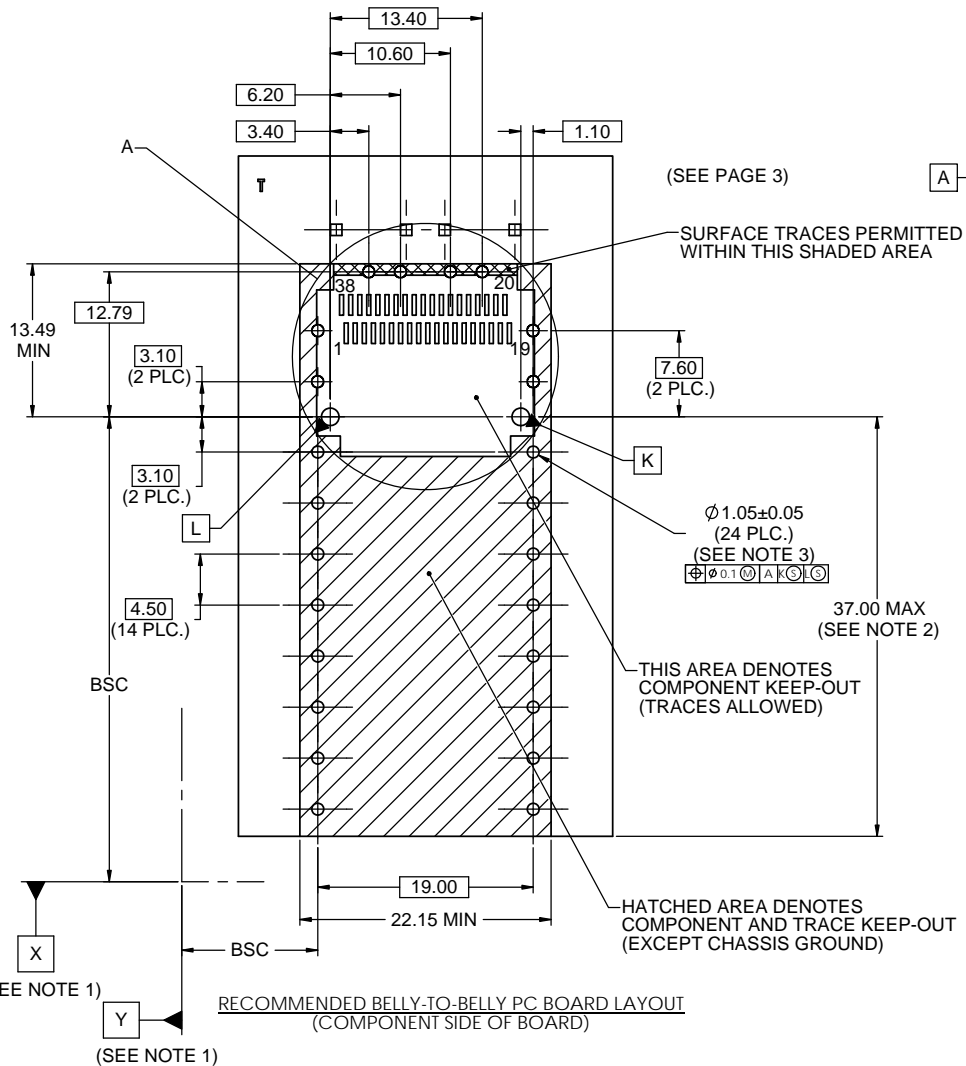
NOTES:

1. DATUMS X AND Y ESTABLISHED BY CUSTOMER'S FIDUCIAL.
2. LOCATION OF EDGE OF PCB IS APPLICATION SPECIFIC.
3. FINISHED HOLE SIZE.

THIS DOCUMENT CONTAINS PROPRIETARY INFORMATION AND SUCH INFORMATION MAY NOT BE DISCLOSED TO OTHERS FOR ANY PURPOSE OR USED FOR MANUFACTURING PURPOSES WITHOUT WRITTEN PERMISSION FROM AMPHENOL CANADA CORP.

| | | | |
|----------------------------|-------------|------------------------|----------------------|
| UNLESS SPECIFIED OTHERWISE | DRAWN | A.C. | JUL5/13 |
| UNIT | MILLIMETERS | CHECKED | ZLJ |
| REFERENCE IN PARENTHESES | M.E. APPD | Q.A. APPD | |
| GENERAL TOLERANCES | DWG APPD | ZLJ | JUL5/13 |
| 1 DECIMAL PLACE | ±0.2 | ENG. REL. NO. | - |
| 2 DECIMAL PLACES | ±0.15 | REF. | |
| ANGULAR DEGREES | ±1° | THIRD ANGLE PROJECTION | DO NOT SCALE DRAWING |

| | | | |
|---|-----------------|-------------|--------------|
| Amphenol High Speed Interconnects A Division of Amphenol Corp. www.amphenol-highspeed.com | | | |
| UltraPort QSFP 1X1 CAGE ASSEMBLY THRU BEZEL TWO REAR PIN WITH HEAT SINK AND LIGHT PIPE OPTIONS | | | |
| DWG. NO. | P-U95-T1X1-1XXX | | REV K |
| CODE ID NO. | 03554 | DWG SIZE: C | SCALE: 3:1 |
| | | | SHEET 3 OF 5 |



- NOTES:
- DATUMS X AND Y ESTABLISHED BY CUSTOMER'S FIDUCIAL.
 - LOCATION OF EDGE OF PCB IS APPLICATION SPECIFIC.
 - FINISHED HOLE SIZE.

THIS DOCUMENT CONTAINS PROPRIETARY INFORMATION AND SUCH INFORMATION MAY NOT BE DISCLOSED TO OTHERS FOR ANY PURPOSE OR USED FOR MANUFACTURING PURPOSES WITHOUT WRITTEN PERMISSION FROM AMPHENOL CANADA CORP.

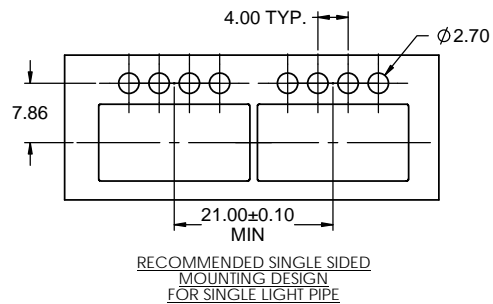
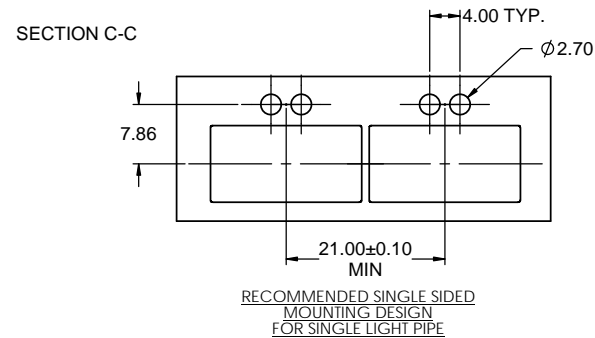
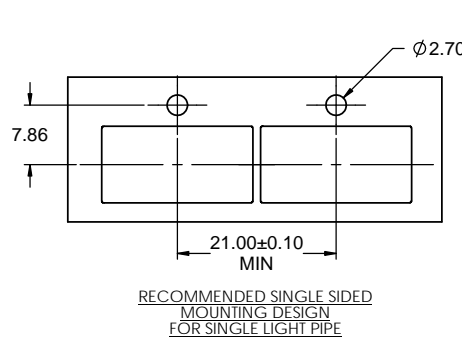
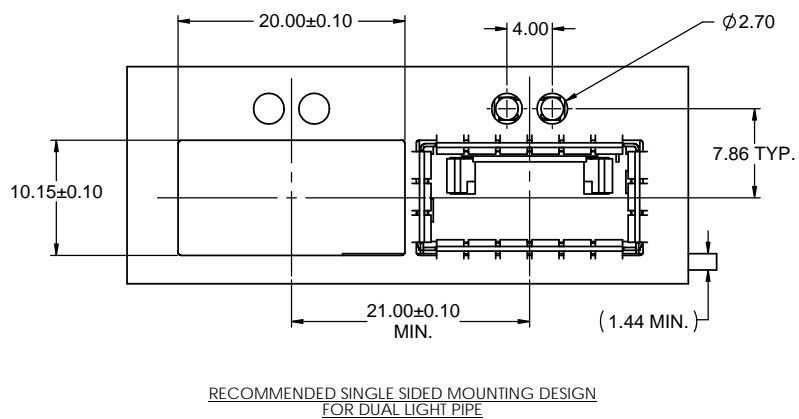
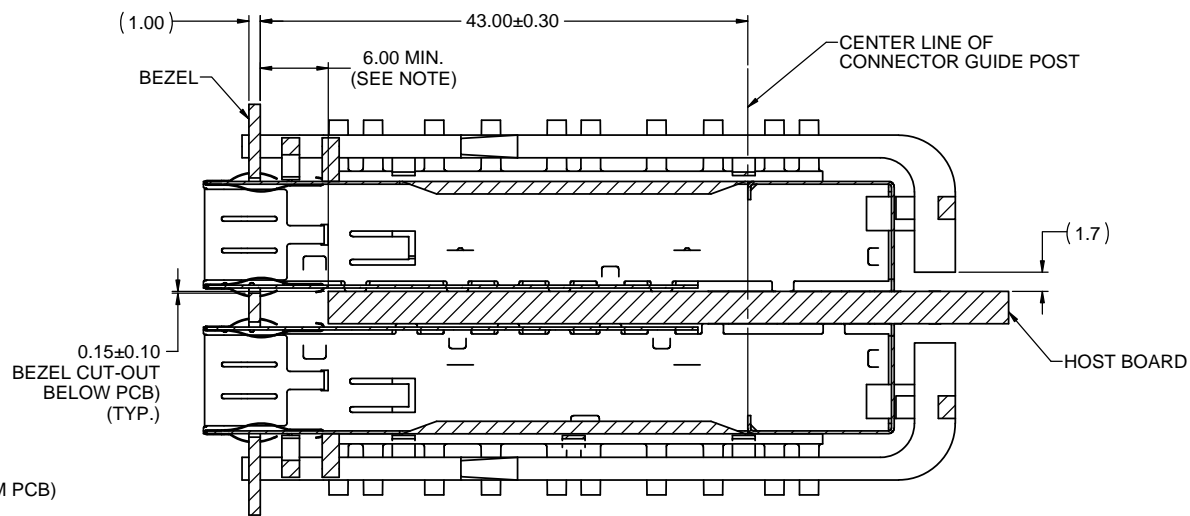
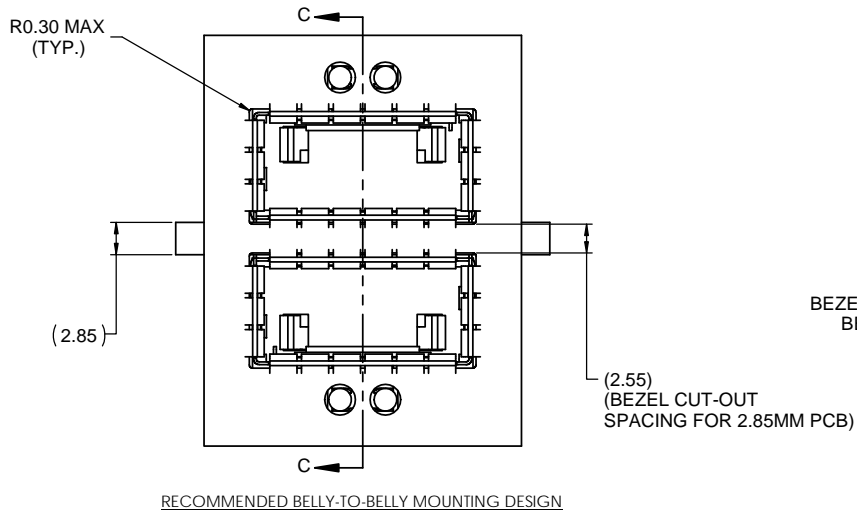
| | | | | |
|----------------------------|-------------|------------------------|------|----------------------|
| UNLESS SPECIFIED OTHERWISE | | DRAWN | A.C. | JUL5/13 |
| UNIT | MILLIMETERS | CHECKED | ZLJ | JUL5/13 |
| REFERENCE IN PARENTHESES | | M.E. APPD | | |
| | | Q.A. APPD | | |
| GENERAL TOLERANCES | | DWG APPD | ZLJ | JUL5/13 |
| 1 DECIMAL PLACE | ±0.2 | ENG. REL. NO. | - | |
| 2 DECIMAL PLACES | ±0.15 | REF. | | |
| ANGULAR DEGREES | ±1° | THIRD ANGLE PROJECTION | | DO NOT SCALE DRAWING |

Amphenol High Speed Interconnects
 A Division of Amphenol Corp. www.amphenol-highspeed.com

UltraPort QSFP 1X1 CAGE ASSEMBLY THRU BEZEL TWO REAR PIN WITH HEAT SINK AND LIGHT PIPE OPTIONS

DWG. NO. **P-U95-T1X1-1XXX** REV **K**

CODE ID NO. 03554 DWG SIZE: C SCALE: 3:1 SHEET 4 OF 5



NOTES:
LOCATION OF EDGE OF PCB IS APPLICATION SPECIFIC.

THIS DOCUMENT CONTAINS PROPRIETARY INFORMATION AND SUCH INFORMATION MAY NOT BE DISCLOSED TO OTHERS FOR ANY PURPOSE OR USED FOR MANUFACTURING PURPOSES WITHOUT WRITTEN PERMISSION FROM AMPHENOL CANADA CORP.

| | | | |
|----------------------------|-------------|------------------------|---------|
| UNLESS SPECIFIED OTHERWISE | DRAWN | A.C. | JUL5/13 |
| UNIT | MILLIMETERS | CHECKED | ZLJ |
| REFERENCE IN PARENTHESES | M.E. APP'D | Q.A. APP'D | |
| GENERAL TOLERANCES | DWG APP'D | ZLJ | JUL5/13 |
| 1 DECIMAL PLACE | ±0.2 | ENG. REL. NO. | - |
| 2 DECIMAL PLACES | ±0.15 | REF. | |
| ANGULAR DEGREES | ±1° | THIRD ANGLE PROJECTION | |
| | | DO NOT SCALE DRAWING | |

Amphenol High Speed Interconnects
A Division of Amphenol Corp. www.amphenol-highspeed.com

UltraPort QSFP 1X1 CAGE ASSEMBLY THRU BEZEL TWO REAR PIN WITH HEAT SINK AND LIGHT PIPE OPTIONS

| | | | |
|-------------|------------------------|-----------|----------|
| DWG. NO. | P-U95-T1X1-1XXX | REV | K |
| CODE ID NO. | 03554 | DWG SIZE: | C |
| SCALE: | 3:1 | SHEET | 5 OF 5 |



Компания «ЭлектроПласт» предлагает заключение долгосрочных отношений при поставках импортных электронных компонентов на взаимовыгодных условиях!

Наши преимущества:

- Оперативные поставки широкого спектра электронных компонентов отечественного и импортного производства напрямую от производителей и с крупнейших мировых складов;
- Поставка более 17-ти миллионов наименований электронных компонентов;
- Поставка сложных, дефицитных, либо снятых с производства позиций;
- Оперативные сроки поставки под заказ (от 5 рабочих дней);
- Экспресс доставка в любую точку России;
- Техническая поддержка проекта, помощь в подборе аналогов, поставка прототипов;
- Система менеджмента качества сертифицирована по Международному стандарту ISO 9001;
- Лицензия ФСБ на осуществление работ с использованием сведений, составляющих государственную тайну;
- Поставка специализированных компонентов (Xilinx, Altera, Analog Devices, Intersil, Interpoint, Microsemi, Aeroflex, Peregrine, Syfer, Eurofarad, Texas Instrument, Miteq, Cobham, E2V, MA-COM, Hittite, Mini-Circuits, General Dynamics и др.);

Помимо этого, одним из направлений компании «ЭлектроПласт» является направление «Источники питания». Мы предлагаем Вам помощь Конструкторского отдела:

- Подбор оптимального решения, техническое обоснование при выборе компонента;
- Подбор аналогов;
- Консультации по применению компонента;
- Поставка образцов и прототипов;
- Техническая поддержка проекта;
- Защита от снятия компонента с производства.



Как с нами связаться

Телефон: 8 (812) 309 58 32 (многоканальный)

Факс: 8 (812) 320-02-42

Электронная почта: org@eplast1.ru

Адрес: 198099, г. Санкт-Петербург, ул. Калинина, дом 2, корпус 4, литера А.