

LTM9013

300MHz Wideband/DPD Receiver

DESCRIPTION

Demonstration circuit DC1931 is a 300MHz wideband/digital pre-distortion (DPD) receiver subsystem featuring the LTM[®]9013. The DC1931 card is designed to plug into the DC1371 data acquisition demo board. It is configured with an IF highpass filter, designed to provide a corner frequency of approximately 1MHz. Other corner frequencies may be realized by changing a small number of element values on the DC1931; see the LTM9013 data sheet for

details. The digital output can easily be analyzed with Linear Technology's PScope[™] data processing software, which is available for no charge at <http://www.linear.com>.

Design files for this circuit board are available at <http://www.linear.com/demo>

LT, LT, LTC, LTM, Linear Technology and the Linear logo are registered trademarks and PScope is a trademark of Linear Technology Corporation. All other trademarks are the property of their respective owners.

QUICK START PROCEDURE

Validating the performance of the LTM9013 is simple with DC1931, and requires only two input sources, a clock source, a computer, and a lab power supply. The DC1931 demonstration circuit board should have the jumper settings as default positions (as per Table 1) which configures the ADC in serial programming mode. In the default configurations, JP1-JP4 should be left in the default locations. This will pull the SPI lines high through weak pull-up resistors so that the SPI commands can be sent from the PC. When JP1 is set to PAR, then jumpers JP2-JP4 can be configured manually. Refer to Figure 1 for proper board evaluation equipment setup and follow the procedure below:

1. Connect the power supply as shown in Figure 1. There are onboard low noise voltage regulators that provide the three supply voltages for the LTM9013. The entire board and all components share a common ground. The power supply should still be a low noise lab power supply capable of supplying at least 1A.
2. Provide an encode clock to the ADC via SMA connector J3. Use a low phase-noise clock source such as a filtered RF signal generator or a high quality clock oscillator.

Note: Similar to having a noisy input, a high jitter (phase noise) encode clock will degrade the signal-to-noise ratio (SNR) of the system.

3. Apply an RF input signal via SMA connector J1. For best results, use a low distortion, low noise signal

Table 1: DC1931 Connectors and Jumpers

REFERENCE	FUNCTION
J1 (RF)	Board RF Signal Input. Impedance-Matched to 50Ω for Use with Lab Signal Generators.
J2 (LO)	Board LO Signal Input. Impedance-Matched to 50Ω for Use with Lab Signal Generators.
J3 (CLK)	Board Clock Input. Impedance-Matched to 50Ω. Drive with a Low Phase Noise Clock Oscillator or Filtered Sine Wave Signal Source.
J4 (digital data)	DC1371 Interface Connector.
JP1 (I/O)	Selects Serial or Parallel Configuration Setting. Default is SER. (Refer to Data Sheet for Function of JP2-JP4 in Serial Mode.)
JP2 (CLK Stabilizer)	Enables Clock Duty Cycle Stabilizer. Default is Disable.
JP3 (ADC Sleep)	Sets ADC Sleep mode. Default is RUN.
JP4 (LVDS Current)	Selects LVDS Output Current. Default is 3.5mA
JP5 (Amp Run)	Enables IF Amplifier. Default is EN.
JP6 (I/Q Enable)	Enables I/Q Demodulator. Default is EN.
JP7 (IP2 Adjust)	Enables IP2 Adjust. Default is Disable.
JP8 (Write Enable)	Enables/Disables Writing to the EEPROM. Default is EN.

generator with sufficient filtering to avoid degrading the performance of the receiver.

4. Apply an LO input signal via SMA connector J2. Note that the difference in frequency between this signal and the RF signal will be the baseband frequency resulting at the I and Q channels and ADC inputs.

QUICK START PROCEDURE

5. Observe the ADC output with demo circuit DC1371, a USB cable, a Windows computer, and Linear Technology's PScope data processing software.
6. Note the IF gain of the LTM9013 may be adjusted using R25 (I channel), and R31 (Q channel).
7. The 2nd order linearity of the LTM9013 may be adjusted over a limited range by first setting JP7 to the EN position, and then using R15 (I channel) and R7 (Q channel).

Using PScope Software

PScope, downloadable from Linear Technology's website <http://www.linear.com/software>, processes data from the DC1371 data acquisition board and displays FFT and signal analysis information on the computer screen.

The onboard EEPROM U5 should enable automatic board detection and auto-configuration of the software, but if the user wishes to change the settings, they can easily do so.

From the Configure menu in the toolbar, uncheck "Autodetect Device". The default settings for DC1931 are shown in Figure 2.

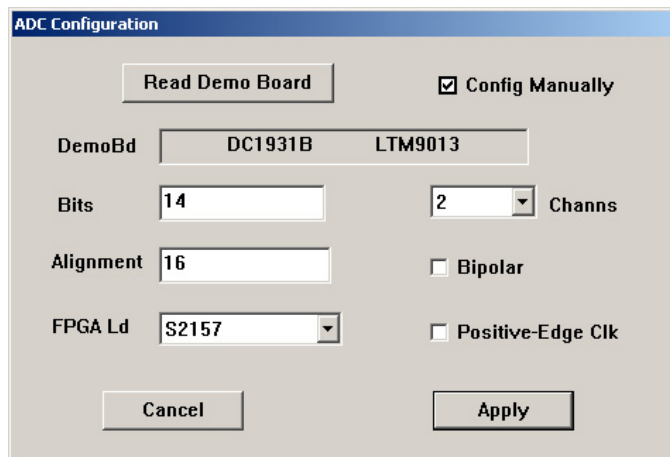


Figure 2. Entering the Correct Device Information for Your ADC. Select the Correct Parameters for the DC1931. Under Normal Conditions, PScope Should Automatically Recognize the Board and Adjust the Software Settings Accordingly

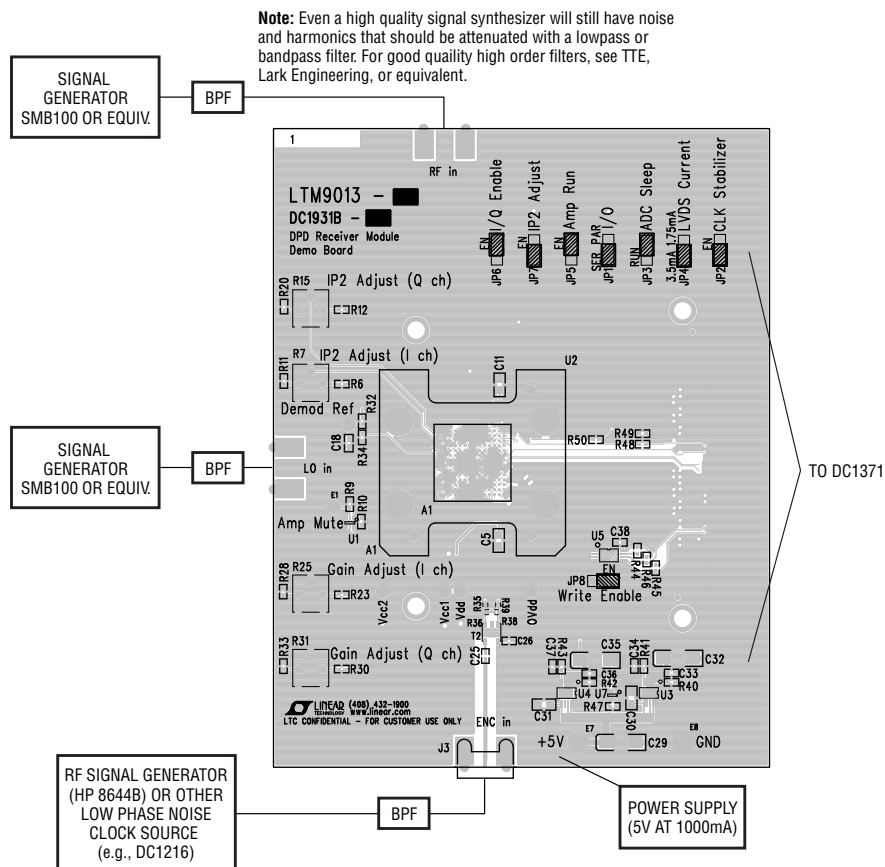


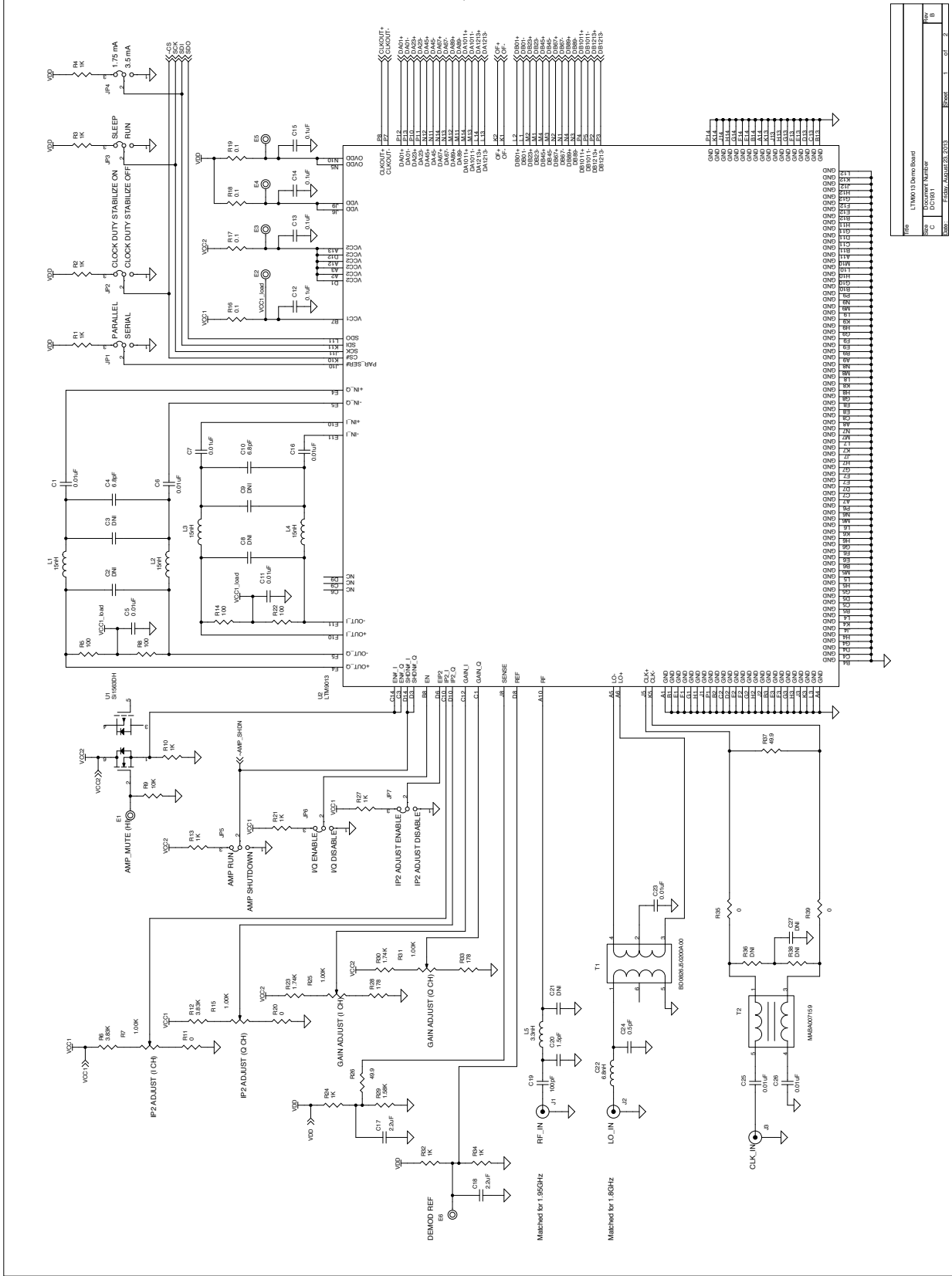
Figure 1. Proper Measurement Equipment Setup

PARTS LIST

ITEM	QTY	REFERENCE	PART DESCRIPTION	MANUFACTURER/PART NUMBER
1	9	C12-C15, C33, C34, C36-C38	CAP, X5R, 0.1µF, 10V, 10%, 0402	AVX, 0402ZD104KAT2A
2	3	C29, C32, C35	CAP, TANT, 47µF, 10V, 10%, C 6032	VISHAY/293D476X9010C2TE3
3	1	C19	CAP, COG, 100pF, 25V, 1%, 0402	AVX, 04023A101FAT
4	0	C21, C27, R36, R38	CAP, DNI, 0402	
5	0	C2, C3, C8, C9	CAP, DNI, 0805	
6	2	C17, C18	CAP, X7R, 2.2µF, 6.3V, 10%, 0603	AVX, 06036C225KAT2A
7	2	C31, C30	CAP, X5R, 4.7µF, 10V, 20%, 0805	AVX, 0805ZD475MAT2A
8	7	C1, C6, C7, C16, C23, C25, C26	CAP, X7R, 0.01µF, 16V, 10%, 0402	AVX, 0402YC103KAT2A
9	2	C5, C11	CAP, X7R, 0.01µF, 16V, 10%, 0805	AVX, 0805YC103KAT2A
10	1	C20	CAP, COG, 1.5pF, 25V, 1%, 0402	AVX, 04023A1R5FAT
11	2	C4, C10	CAP, COG, 6.8pF, 25V, 1%, 0402	AVX, 04023A6R8FAT
12	1	C24	CAP, COG, 0.5pF, 25V, 1%, 0402	AVX, 04023A0R5FAT
13	1	J4	CONN., SNGL-END ARRAY MALE 160POS	SAMTEC, ASP-134606-01
14	8	JP1-JP8	HEADER, 3X1, 2mm	SULLIN, NRPN031PAEN-RC
15	8	JP1-JP8	SHUNT	SAMTEC, 2SN-BK-G
16	3	J1, J2, J3	CONN, SMA, 50Ω EDGE-LAUNCH	E.F.JOHNSON, 142-0701-851
17	4	R11, R20, R35, R39	RES, 0Ω JUMPER, 0402	VISHAY, CRCW04020000Z0ED
18	1	C22	IND, 6.8nH, 5%, 0402	TOKO, LL1005-FHL6N8J
19	1	L5	IND, 3.3nH, 5%, 0402	TOKO, LL1005-FHL3N3J
20	4	L1, L2, L3, L4	IND, 15nH, 5%, 0402	TOKO, LL1005-FHL15NJ
21	2	R6, R12	RES, 3.83k, 1%, 1/16, 0402	VISHAY, CRCW04023K83FKED
22	1	R29	RES, 1.58k, 1%, 1/16, 0402	VISHAY, CRCW04021K58FKED
23	4	R5, R8, R14, R22	RES, 100Ω, 1%, 1/16, 0603	VISHAY, CRCW0603100RFKED
24	4	R16, R17, R18, R19	RES, 0.1Ω, 1%, 1/10, 0603	VISHAY, WSL0603R1000FEA
25	1	R43	RES, 182k, 1%, 1/10, 0603	VISHAY, CRCW0603182KFKEA
26	2	R33, R28	RES, 178Ω, 1%, 1/16, 0402	VISHAY, CRCW0402178RFKED
27	2	R26, R37	RES, 49.9Ω, 1%, 1/20, 0201	VISHAY, CRCW020149R9FKED
28	4	R9, R44, R45, R46	RES, 10k, 1%, 1/16, 0402	VISHAY, CRCW040210K0FKED
29	4	R7, R15, R25, R31	POT., TRIMMER, 1kΩ 1/4" SQ CERM SL ST	BOURNS, 3362P-1-102TLF
30	2	R23, R30	RES, 1.74k, 1%, 1/16, 0402	VISHAY, CRCW04021K74FKED
31	2	R42, R40	RES, 3.00k, 1%, 1/16, 0402	VISHAY, CRCW04023K00FKED
32	12	R1, R2, R3, R4, R10, R13, R21, R24, R27, R32, R34, R47	RES, 1k, 5%, 1/16, 0402	VISHAY, CRCW04021K00JNED
33	1	R41	RES, 330K OHM, 1%, 1/10, 0603	VISHAY, CRCW0603330KFKEA
34	1	T2	TRANSFORMER, RF, SMT, 1:1 BALUN	MA COM, MABA-007159-000000
35	1	T1	TRANSFORMER, RF, SMT, 4:1 BALUN	ANAREN, BD0826J50200A00
36	6	E1, E2, E3, E4, E5, E6	TURRET, 0.063	MILL-MAX, 2308-02-00-80-00-00-07-0
37	2	E7, E8	TURRET, 0.094	MILL-MAX, 2501-02-00-80-00-00-07-1
38	2	U7, U1	IC, CMOS FET, SI1563DH	VISHAY SILICONIX, SI1563DH
39	2	U4, U3	IC, VREG,ADJ,1.1A,DD8	LINEAR TECH, LT3080EDD#PBF
40	1	U5	IC EEPROM 32KBIT 400KHZ 8TSSOP	MICROCHIP, 24LC32A-I/ST
41	1	U2	MODULE, LTM9013IY	LINEAR TECH, LTM9013IY
42	1		FAB, PCB, DC1931B	DEMO CIRCUIT DC1931B
43	1		STENCIL SET, DC1931B	STENCIL DC1931B

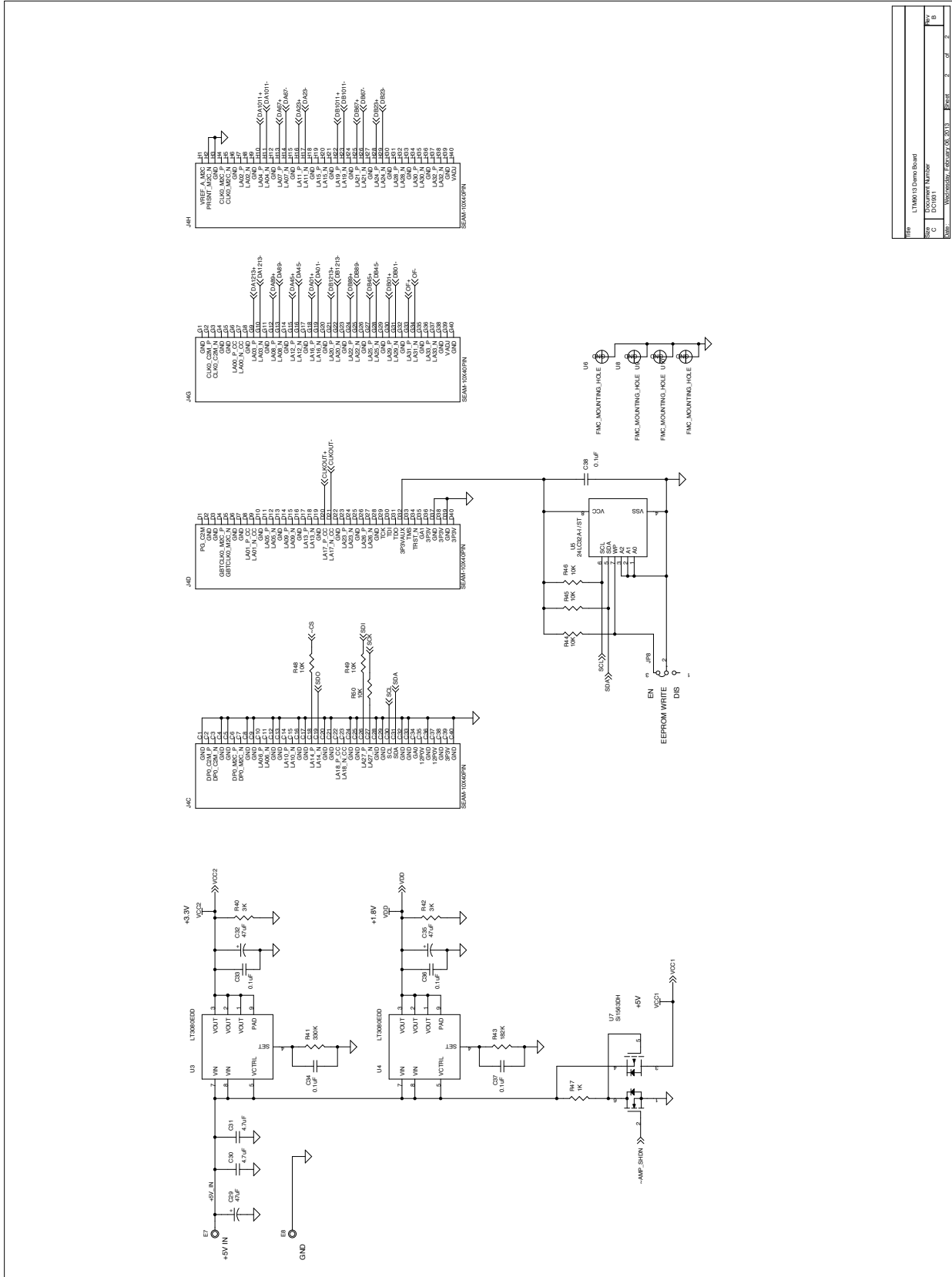
DEMO MANUAL DC1931B

SCHEMATIC DIAGRAM



REV	LT1931B Demo Board
DATE	2013
DESIGNER	David Walker
CHK'D	David Walker
DATE	2013
REV	1
OF	2

SCHEMATIC DIAGRAM



Item	Part Number
1	L7809ED
2	24C02A
3	LED
4	10k
5	1k
6	0.1uF
7	4.7uF
8	47uF

DEMO MANUAL DC1931B

DEMONSTRATION BOARD IMPORTANT NOTICE

Linear Technology Corporation (LTC) provides the enclosed product(s) under the following **AS IS** conditions:

This demonstration board (DEMO BOARD) kit being sold or provided by Linear Technology is intended for use for **ENGINEERING DEVELOPMENT OR EVALUATION PURPOSES ONLY** and is not provided by LTC for commercial use. As such, the DEMO BOARD herein may not be complete in terms of required design-, marketing-, and/or manufacturing-related protective considerations, including but not limited to product safety measures typically found in finished commercial goods. As a prototype, this product does not fall within the scope of the European Union directive on electromagnetic compatibility and therefore may or may not meet the technical requirements of the directive, or other regulations.

If this evaluation kit does not meet the specifications recited in the DEMO BOARD manual the kit may be returned within 30 days from the date of delivery for a full refund. **THE FOREGOING WARRANTY IS THE EXCLUSIVE WARRANTY MADE BY THE SELLER TO BUYER AND IS IN LIEU OF ALL OTHER WARRANTIES, EXPRESSED, IMPLIED, OR STATUTORY, INCLUDING ANY WARRANTY OF MERCHANTABILITY OR FITNESS FOR ANY PARTICULAR PURPOSE. EXCEPT TO THE EXTENT OF THIS INDEMNITY, NEITHER PARTY SHALL BE LIABLE TO THE OTHER FOR ANY INDIRECT, SPECIAL, INCIDENTAL, OR CONSEQUENTIAL DAMAGES.**

The user assumes all responsibility and liability for proper and safe handling of the goods. Further, the user releases LTC from all claims arising from the handling or use of the goods. Due to the open construction of the product, it is the user's responsibility to take any and all appropriate precautions with regard to electrostatic discharge. Also be aware that the products herein may not be regulatory compliant or agency certified (FCC, UL, CE, etc.).

No License is granted under any patent right or other intellectual property whatsoever. **LTC assumes no liability for applications assistance, customer product design, software performance, or infringement of patents or any other intellectual property rights of any kind.**

LTC currently services a variety of customers for products around the world, and therefore this transaction **is not exclusive**.

Please read the DEMO BOARD manual prior to handling the product. Persons handling this product must have electronics training and observe good laboratory practice standards. **Common sense is encouraged.**

This notice contains important safety information about temperatures and voltages. For further safety concerns, please contact a LTC application engineer.

Mailing Address:

Linear Technology
1630 McCarthy Blvd.
Milpitas, CA 95035

Copyright © 2004, Linear Technology Corporation



Компания «ЭлектроПласт» предлагает заключение долгосрочных отношений при поставках импортных электронных компонентов на взаимовыгодных условиях!

Наши преимущества:

- Оперативные поставки широкого спектра электронных компонентов отечественного и импортного производства напрямую от производителей и с крупнейших мировых складов;
- Поставка более 17-ти миллионов наименований электронных компонентов;
- Поставка сложных, дефицитных, либо снятых с производства позиций;
- Оперативные сроки поставки под заказ (от 5 рабочих дней);
- Экспресс доставка в любую точку России;
- Техническая поддержка проекта, помощь в подборе аналогов, поставка прототипов;
- Система менеджмента качества сертифицирована по Международному стандарту ISO 9001;
- Лицензия ФСБ на осуществление работ с использованием сведений, составляющих государственную тайну;
- Поставка специализированных компонентов (Xilinx, Altera, Analog Devices, Intersil, Interpoint, Microsemi, Aeroflex, Peregrine, Syfer, Eurofarad, Texas Instrument, Miteq, Cobham, E2V, MA-COM, Hittite, Mini-Circuits, General Dynamics и др.);

Помимо этого, одним из направлений компании «ЭлектроПласт» является направление «Источники питания». Мы предлагаем Вам помощь Конструкторского отдела:

- Подбор оптимального решения, техническое обоснование при выборе компонента;
- Подбор аналогов;
- Консультации по применению компонента;
- Поставка образцов и прототипов;
- Техническая поддержка проекта;
- Защита от снятия компонента с производства.



Как с нами связаться

Телефон: 8 (812) 309 58 32 (многоканальный)

Факс: 8 (812) 320-02-42

Электронная почта: org@eplast1.ru

Адрес: 198099, г. Санкт-Петербург, ул. Калинина, дом 2, корпус 4, литера А.