



Heyco®-Tite EMC Brass Liquid Tight Cordgrips

Straight Thru, PG Hubs

EMC Nickel-Plated Brass with Contact Sleeve

The Ultimate in Liquid Tight Strain Relief Protection

- Ideal for applications where **Electromagnetic Interference (EMI) protection or Electromagnetic Compatibility (EMC) is needed.**
- IP 68 rated.
- Nickel-plated finish over brass provides excellent corrosion resistance and durability.
- Excellent 360° shield contact with contact sleeve due to braided shield which runs into the gland.
- Combination of the sealing insert and the contact socket guarantees a constant contact quality with minimal transfer impedance.
- Inner cable protection.
- Long thread for use in standard or thick panels.
- Multiple sizes for flexible cord diameters ranging from .10" (2,5 mm) to 1.00" (25,5 mm).
- For use in clearance or threaded holes.
- Cordgrips are made of nickel plated brass and the gland is made of TPE.
- EMC locknuts available. See page 3-40.
- DFARS Compliant

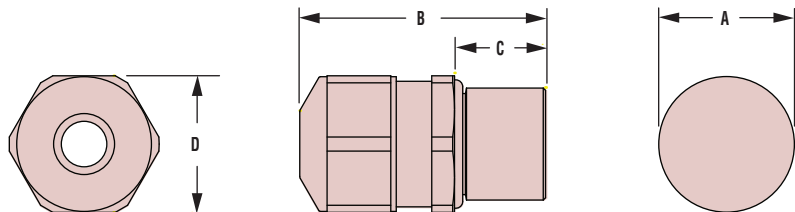
| CABLE DIA. RANGE | | | | PART NO. | THREAD SIZE | UL or IEC | PART DIMENSIONS | | | | | | | |
|------------------|-----|---------|-----|----------|-------------|-----------|--------------------------|-----|-----------------------|-----|--------------------|-----|------------------------------|--|
| Minimum | | Maximum | | | | | A Clearance Hole Dia. | | B Max. O.A. Length | | C Thread Length | | D Wrenching Nut Flat Size | |
| in. | mm. | in. | mm. | | | in. | mm. | in. | mm. | in. | mm. | in. | mm. | |

Standard Thread

| | | | | | | | | | | | | | | |
|------|------|-------|------|-------------|--------|-------|-------|-------|------|------|------|------|------|------|
| .177 | 4,5 | .236 | 6,0 | 4600 | PG7 | cULus | .492 | 12,5 | 1.06 | 27,0 | .39 | 10,0 | .59 | 15,0 |
| .236 | 6,0 | .295 | 7,5 | 4641 | | | | | | | | | | |
| .236 | 6,0 | .315 | 8,0 | 4644 | PG9 | cULus | .598 | 15,2 | 1.18 | 30,0 | .39 | 10,0 | .71 | 18,0 |
| .315 | 8,0 | .394 | 10,0 | 4645 | PG9 | | | .598 | 15,2 | 1.26 | 32,0 | | | |
| .217 | 5,5 | .335 | 8,5 | 4647 | PG11 | cULus | .732 | 18,6 | 1.22 | 31,0 | .39 | 10,0 | .83 | 21,0 |
| .335 | 8,5 | .472 | 12,0 | 4648 | | | | | | | | | | |
| .315 | 8,0 | .433 | 11,0 | 4650 | PG13.5 | cULus | .803 | 20,4 | 1.22 | 31,0 | .39 | 10,0 | .94 | 24,0 |
| .433 | 11,0 | .551 | 14,0 | 4651 | PG13.5 | | | .803 | 20,4 | 1.30 | 33,0 | | | |
| .315 | 8,0 | .433 | 11,0 | 4653 | PG16 | cULus | .886 | 22,5 | 1.22 | 31,0 | .39 | 10,0 | .94 | 24,0 |
| .433 | 11,0 | .551 | 14,0 | 4654 | PG16 | | | .886 | 22,5 | 1.30 | 33,0 | | | |
| .512 | 13,0 | .630 | 16,0 | 4656 | PG21 | cULus | 1.114 | 28,3 | 1.45 | 37,0 | .47 | 12,0 | 1.18 | 30,0 |
| .630 | 16,0 | .748 | 19,0 | 4657 | PG21 | | | 1.114 | 28,3 | 1.57 | 40,0 | | | |
| .748 | 19,0 | .906 | 23,0 | 4659 | PG29 | cULus | 1.469 | 37,3 | 1.61 | 41,0 | .47 | 12,0 | 1.50 | 38,0 |
| .906 | 23,0 | 1.003 | 25,5 | 4660 | | | | | | | | | | |

Short Thread — ALL NEW PRODUCTS!

| | | | | | | | | | | | | | | |
|------|------|-------|------|--------------|---------|-------|-------|-------|------|------|------|-----|------|------|
| .177 | 4,5 | .236 | 6,0 | 14640 | PG 7 | cULus | .492 | 12,5 | .91 | 23,0 | .24 | 6,0 | .59 | 15,0 |
| .236 | 6,0 | .295 | 7,5 | 14641 | | | | | | | | | | |
| .236 | 6,0 | .315 | 8,0 | 14644 | PG 9 | cULus | .598 | 15,2 | 1.02 | 26,0 | .24 | 6,0 | .71 | 18,0 |
| .315 | 8,0 | .394 | 10,0 | 14645 | PG 9 | | | .598 | 15,2 | 1.10 | 28,0 | | | |
| .217 | 5,5 | .335 | 8,5 | 14647 | PG 11 | cULus | .732 | 18,6 | 1.06 | 27,0 | .24 | 6,0 | .83 | 21,0 |
| .335 | 8,5 | .472 | 12,0 | 14648 | | | | | | | | | | |
| .315 | 8,0 | .433 | 11,0 | 14650 | PG 13.5 | cULus | .803 | 20,4 | 1.06 | 27,0 | .24 | 6,0 | .94 | 24,0 |
| .433 | 11,0 | .551 | 14,0 | 14651 | PG 13.5 | | | .803 | 20,4 | 1.14 | 29,0 | | | |
| .315 | 8,0 | .433 | 11,0 | 14653 | PG 16 | cULus | .886 | 22,5 | 1.06 | 27,0 | .24 | 6,0 | .94 | 24,0 |
| .433 | 11,0 | .551 | 14,0 | 14654 | PG 16 | | | .886 | 22,5 | 1.14 | 29,0 | | | |
| .512 | 13,0 | .630 | 16,0 | 14656 | PG 21 | cULus | 1.114 | 28,3 | 1.28 | 32,5 | .30 | 7,5 | 1.18 | 30,0 |
| .630 | 16,0 | .748 | 19,0 | 14657 | PG 21 | | | 1.114 | 28,3 | 1.40 | 35,5 | | | |
| .748 | 19,0 | .906 | 23,0 | 14659 | PG 29 | cULus | 1.469 | 37,3 | 1.47 | 37,0 | .31 | 8,0 | 1.50 | 38,0 |
| .906 | 23,0 | 1.003 | 25,5 | 14660 | | | | | | | | | | |



Quick Specs

| | |
|-------------------|---|
| Material | Nickel-Plated Brass W/TPE Sealing Gland |
| Certifications | cULus Recognized under the Component Program of Underwriters' Laboratories File E51579 to both Canadian and U.S. requirements |
| Temperature Range | -40°F (-40°C) to 212°F (100°C) |
| IP Rating | IP 68, IP 69K |



Компания «ЭлектроПласт» предлагает заключение долгосрочных отношений при поставках импортных электронных компонентов на взаимовыгодных условиях!

Наши преимущества:

- Оперативные поставки широкого спектра электронных компонентов отечественного и импортного производства напрямую от производителей и с крупнейших мировых складов;
- Поставка более 17-ти миллионов наименований электронных компонентов;
- Поставка сложных, дефицитных, либо снятых с производства позиций;
- Оперативные сроки поставки под заказ (от 5 рабочих дней);
- Экспресс доставка в любую точку России;
- Техническая поддержка проекта, помощь в подборе аналогов, поставка прототипов;
- Система менеджмента качества сертифицирована по Международному стандарту ISO 9001;
- Лицензия ФСБ на осуществление работ с использованием сведений, составляющих государственную тайну;
- Поставка специализированных компонентов (Xilinx, Altera, Analog Devices, Intersil, Interpoint, Microsemi, Aeroflex, Peregrine, Syfer, Eurofarad, Texas Instrument, Miteq, Cobham, E2V, MA-COM, Hittite, Mini-Circuits, General Dynamics и др.);

Помимо этого, одним из направлений компании «ЭлектроПласт» является направление «Источники питания». Мы предлагаем Вам помощь Конструкторского отдела:

- Подбор оптимального решения, техническое обоснование при выборе компонента;
- Подбор аналогов;
- Консультации по применению компонента;
- Поставка образцов и прототипов;
- Техническая поддержка проекта;
- Защита от снятия компонента с производства.



Как с нами связаться

Телефон: 8 (812) 309 58 32 (многоканальный)

Факс: 8 (812) 320-02-42

Электронная почта: org@eplast1.ru

Адрес: 198099, г. Санкт-Петербург, ул. Калинина, дом 2, корпус 4, литера А.