



## Heyco®-Tite EMC Brass Liquid Tight Cordgrips

### Straight Thru, PG Hubs

EMC Nickel-Plated Brass with Contact Sleeve

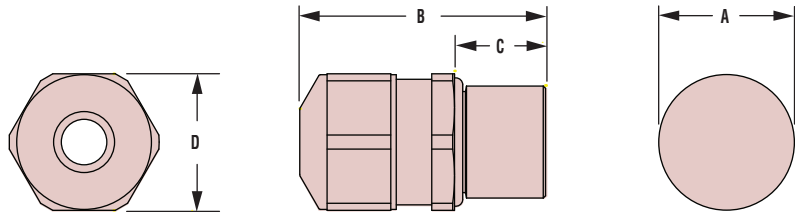
*The Ultimate in Liquid Tight Strain Relief Protection*

- Ideal for applications where **Electromagnetic Interference (EMI) protection or Electromagnetic Compatibility (EMC) is needed.**
- IP 68 rated.
- Nickel-plated finish over brass provides excellent corrosion resistance and durability.
- Excellent 360° shield contact with contact sleeve due to braided shield which runs into the gland.
- Combination of the sealing insert and the contact socket guarantees a constant contact quality with minimal transfer impedance.
- Inner cable protection.
- Long thread for use in standard or thick panels.
- Multiple sizes for flexible cord diameters ranging from .10" (2,5 mm) to 1.00" (25,5 mm).
- For use in clearance or threaded holes.
- Cordgrips are made of nickel plated brass and the gland is made of TPE.
- EMC locknuts available. See page 3-40.
- DFARS Compliant

| CABLE DIA. RANGE |     |         |     | PART NO. | THREAD SIZE | UL or IEC | PART DIMENSIONS |     |     |     |     |     |     |     |
|------------------|-----|---------|-----|----------|-------------|-----------|-----------------|-----|-----|-----|-----|-----|-----|-----|
| Minimum          |     | Maximum |     |          |             |           | A               |     | B   |     | C   |     | D   |     |
| in.              | mm. | in.     | mm. |          |             |           | in.             | mm. | in. | mm. | in. | mm. | in. | mm. |

| Standard Thread |      |       |      |             |        |       |       |      |      |      |     |      |      |      |
|-----------------|------|-------|------|-------------|--------|-------|-------|------|------|------|-----|------|------|------|
| .177            | 4,5  | .236  | 6,0  | <b>4600</b> | PG7    | cULus | .492  | 12,5 | 1.06 | 27,0 | .39 | 10,0 | .59  | 15,0 |
| .236            | 6,0  | .295  | 7,5  | <b>4641</b> |        |       |       |      |      |      |     |      |      |      |
| .236            | 6,0  | .315  | 8,0  | <b>4644</b> | PG9    | cULus | .598  | 15,2 | 1.18 | 30,0 | .39 | 10,0 | .71  | 18,0 |
| .315            | 8,0  | .394  | 10,0 | <b>4645</b> |        |       |       |      |      |      |     |      |      |      |
| .217            | 5,5  | .335  | 8,5  | <b>4647</b> | PG11   | cULus | .732  | 18,6 | 1.22 | 31,0 | .39 | 10,0 | .83  | 21,0 |
| .335            | 8,5  | .472  | 12,0 | <b>4648</b> |        |       |       |      |      |      |     |      |      |      |
| .315            | 8,0  | .433  | 11,0 | <b>4650</b> | PG13.5 | cULus | .803  | 20,4 | 1.22 | 31,0 | .39 | 10,0 | .94  | 24,0 |
| .433            | 11,0 | .551  | 14,0 | <b>4651</b> | PG13.5 | cULus | .803  | 20,4 | 1.30 | 33,0 | .39 | 10,0 | .94  | 24,0 |
| .315            | 8,0  | .433  | 11,0 | <b>4653</b> | PG16   | cULus | .886  | 22,5 | 1.22 | 31,0 | .39 | 10,0 | .94  | 24,0 |
| .433            | 11,0 | .551  | 14,0 | <b>4654</b> | PG16   | cULus | .886  | 22,5 | 1.30 | 33,0 | .39 | 10,0 | .94  | 24,0 |
| .512            | 13,0 | .630  | 16,0 | <b>4656</b> | PG21   | cULus | 1.114 | 28,3 | 1.45 | 37,0 | .47 | 12,0 | 1.18 | 30,0 |
| .630            | 16,0 | .748  | 19,0 | <b>4657</b> | PG21   | cULus | 1.114 | 28,3 | 1.57 | 40,0 | .47 | 12,0 | 1.18 | 30,0 |
| .748            | 19,0 | .906  | 23,0 | <b>4659</b> | PG29   | cULus | 1.469 | 37,3 | 1.61 | 41,0 | .47 | 12,0 | 1.50 | 38,0 |
| .906            | 23,0 | 1.003 | 25,5 | <b>4660</b> |        |       |       |      |      |      |     |      |      |      |

| Short Thread — ALL NEW PRODUCTS! |      |       |      |              |         |       |       |      |      |      |     |     |      |      |
|----------------------------------|------|-------|------|--------------|---------|-------|-------|------|------|------|-----|-----|------|------|
| .177                             | 4,5  | .236  | 6,0  | <b>14640</b> | PG 7    | cULus | .492  | 12,5 | .91  | 23,0 | .24 | 6,0 | .59  | 15,0 |
| .236                             | 6,0  | .295  | 7,5  | <b>14641</b> | PG 9    | cULus | .598  | 15,2 | 1.02 | 26,0 | .24 | 6,0 | .71  | 18,0 |
| .236                             | 6,0  | .315  | 8,0  | <b>14644</b> |         |       |       |      |      |      |     |     |      |      |
| .315                             | 8,0  | .394  | 10,0 | <b>14645</b> | PG 9    | cULus | .598  | 15,2 | 1.10 | 28,0 | .24 | 6,0 | .71  | 18,0 |
| .217                             | 5,5  | .335  | 8,5  | <b>14647</b> | PG 11   | cULus | .732  | 18,6 | 1.06 | 27,0 | .24 | 6,0 | .83  | 21,0 |
| .335                             | 8,5  | .472  | 12,0 | <b>14648</b> |         |       |       |      |      |      |     |     |      |      |
| .315                             | 8,0  | .433  | 11,0 | <b>14650</b> | PG 13.5 | cULus | .803  | 20,4 | 1.06 | 27,0 | .24 | 6,0 | .94  | 24,0 |
| .433                             | 11,0 | .551  | 14,0 | <b>14651</b> | PG 13.5 | cULus | .803  | 20,4 | 1.14 | 29,0 | .24 | 6,0 | .94  | 24,0 |
| .315                             | 8,0  | .433  | 11,0 | <b>14653</b> | PG 16   | cULus | .886  | 22,5 | 1.06 | 27,0 | .24 | 6,0 | .94  | 24,0 |
| .433                             | 11,0 | .551  | 14,0 | <b>14654</b> | PG 16   | cULus | .886  | 22,5 | 1.14 | 29,0 | .24 | 6,0 | .94  | 24,0 |
| .512                             | 13,0 | .630  | 16,0 | <b>14656</b> | PG 21   | cULus | 1.114 | 28,3 | 1.28 | 32,5 | .30 | 7,5 | 1.18 | 30,0 |
| .630                             | 16,0 | .748  | 19,0 | <b>14657</b> | PG 21   | cULus | 1.114 | 28,3 | 1.40 | 35,5 | .30 | 7,5 | 1.18 | 30,0 |
| .748                             | 19,0 | .906  | 23,0 | <b>14659</b> | PG 29   | cULus | 1.469 | 37,3 | 1.47 | 37,0 | .31 | 8,0 | 1.50 | 38,0 |
| .906                             | 23,0 | 1.003 | 25,5 | <b>14660</b> |         |       |       |      |      |      |     |     |      |      |



Quick Specs

|                   |   |
|-------------------|---|
| Material          | Nickel-Plated Brass W/TPE Sealing Gland   |
| Certifications    | cULus Recognized under the Component Program of Underwriters' Laboratories File E51579 to both Canadian and U.S. requirements |
| Temperature Range | -40°F (-40°C) to 212°F (100°C)  |
| IP Rating         | IP 68, IP 69K   |



Компания «ЭлектроПласт» предлагает заключение долгосрочных отношений при поставках импортных электронных компонентов на взаимовыгодных условиях!

Наши преимущества:

- Оперативные поставки широкого спектра электронных компонентов отечественного и импортного производства напрямую от производителей и с крупнейших мировых складов;
- Поставка более 17-ти миллионов наименований электронных компонентов;
- Поставка сложных, дефицитных, либо снятых с производства позиций;
- Оперативные сроки поставки под заказ (от 5 рабочих дней);
- Экспресс доставка в любую точку России;
- Техническая поддержка проекта, помощь в подборе аналогов, поставка прототипов;
- Система менеджмента качества сертифицирована по Международному стандарту ISO 9001;
- Лицензия ФСБ на осуществление работ с использованием сведений, составляющих государственную тайну;
- Поставка специализированных компонентов (Xilinx, Altera, Analog Devices, Intersil, Interpoint, Microsemi, Aeroflex, Peregrine, Syfer, Eurofarad, Texas Instrument, Miteq, Cobham, E2V, MA-COM, Hittite, Mini-Circuits, General Dynamics и др.);

Помимо этого, одним из направлений компании «ЭлектроПласт» является направление «Источники питания». Мы предлагаем Вам помощь Конструкторского отдела:

- Подбор оптимального решения, техническое обоснование при выборе компонента;
- Подбор аналогов;
- Консультации по применению компонента;
- Поставка образцов и прототипов;
- Техническая поддержка проекта;
- Защита от снятия компонента с производства.



#### Как с нами связаться

**Телефон:** 8 (812) 309 58 32 (многоканальный)

**Факс:** 8 (812) 320-02-42

**Электронная почта:** [org@eplast1.ru](mailto:org@eplast1.ru)

**Адрес:** 198099, г. Санкт-Петербург, ул. Калинина, дом 2, корпус 4, литера А.