

**PLEASE CHECK WWW.MOLEX.COM FOR LATEST PART INFORMATION**

**Part Number:** [0526100872](#)  
**Status:** **Active**  
**Overview:**  
**Description:** 1.00mm (.039") Pitch FFC/FPC Connector, SMT, Vertical, ZIF, Gold (Au) Contact Plating, 8 Circuits, Lead-free, High Barrier Packaging

**Agency Certification**

CSA LR19980  
 UL E29179

**General**

Product Family FFC/FPC Connectors  
 Series 52610  
 Overview ffc\_fpc\_smt  
 Product Name N/A

**Physical**

Circuits (Loaded) 8  
 Contact Position N/A  
 Durability (mating cycles max) 30  
 Entry Angle Vertical  
 Flammability 94V-0  
 Mated Height (in) 0.226 In  
 Mated Height (mm) 5.75 mm  
 Material - Metal Phosphor Bronze  
 Material - Plating Mating Gold  
 Material - Plating Termination Tin  
 Material - Resin Nylon  
 Number of Rows 1  
 Orientation Vertical  
 PCB Locator No  
 PCB Retention None  
 Packaging Type Embossed Tape on Reel  
 Pitch - Mating Interface (in) 0.039 In  
 Pitch - Mating Interface (mm) 1.00 mm  
 Polarized to PCB No  
 Stackable No  
 Temperature Range - Operating -40°C to +85°C  
 Termination Interface: Style Surface Mount  
 Wire/Cable Type FFC/FPC

**Electrical**

Current - Maximum per Contact 1A  
 Voltage - Maximum 125V AC (RMS)/DC

**Material Info**

**Reference - Drawing Numbers**

Packaging Specification SPK-52610-001, SPK-52610-003  
 Product Specification PS-52610-007, RPS-52610-048, RPS-52610-052, RPS-52610-053, RPS-52610-058, RPS-52610-061, RPS-52610-063  
 Sales Drawing SD-52610-036, SD-52610-037

**EU RoHS**  
**ELV and RoHS**  
**Compliant**  
**REACH SVHC**  
 Not Reviewed  
**Halogen-Free**  
**Status**  
**Not Reviewed**

**China RoHS**



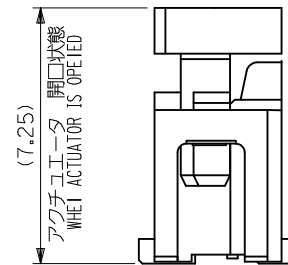
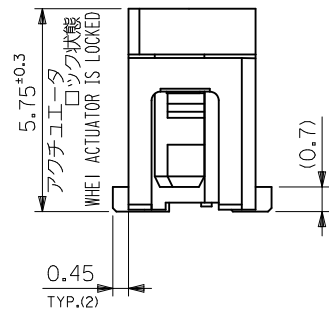
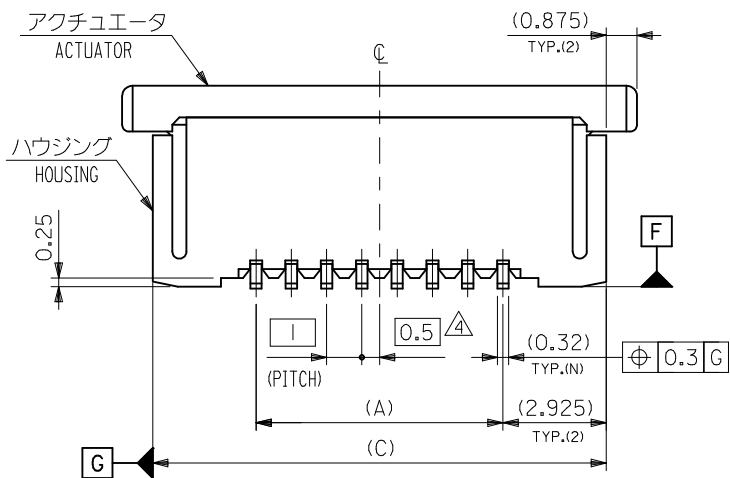
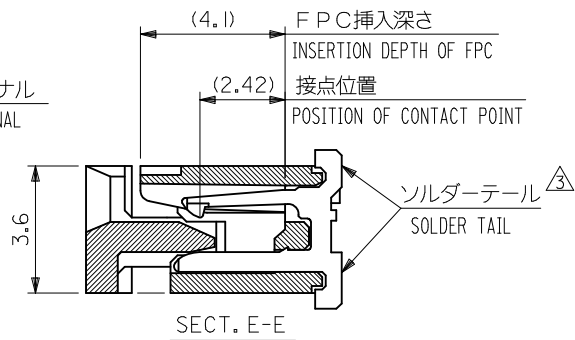
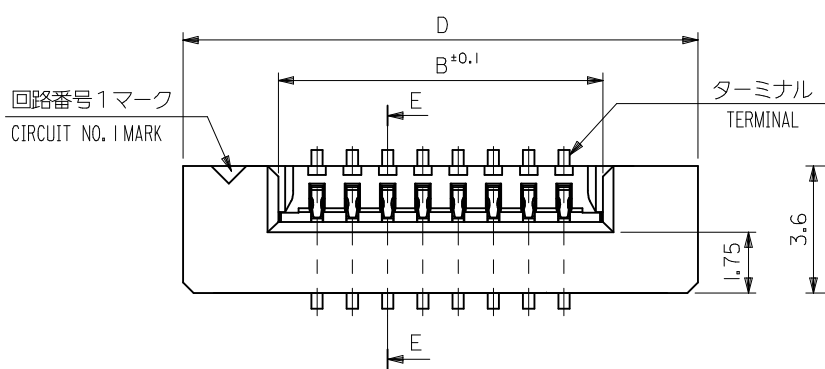
**Need more information on product environmental compliance?**

Email [productcompliance@molex.com](mailto:productcompliance@molex.com)  
 For a multiple part number RoHS Certificate of Compliance, [click here](#)

Please visit the [Contact Us](#) section for any non-product compliance questions.

**Search Parts in this Series**  
[52610Series](#)

**PLEASE CHECK [WWW.MOLEX.COM](http://WWW.MOLEX.COM) FOR LATEST PART INFORMATION**



|         |                   |            |
|---------|-------------------|------------|
| REVISED | EC NO: J2009-2316 | 2009/04/20 |
|         | DRWN: CARIZONO    | 2009/04/20 |
|         | CHKD: T. HARUYAMA | 2009/04/20 |
|         | APPR: NUKITA      | 2009/04/21 |
| REV     | DESCRIPTION       |            |

|  |       |
|--|-------|
| GENERAL TOLERANCES (UNLESS SPECIFIED)                |       |
| 10 UNDER   | ±0.2  |
| 10 OVER 30 UNDER                                     | ±0.25 |
| 30 OVER  | ±0.3  |
| ANGULAR  | ±3 °  |
| DRAFT WHERE APPLICABLE MUST REMAIN WITHIN DIMENSIONS |       |

|                 |   |   |
|-----------------|---|---|
| DIMENSION STYLE |   | SCALE                                   |
| MM ONLY         |   | ---                                     |
| DRAWN BY        | DATE  | TITLE                                   |
| M. NABEI        | '05/07/21   | 1.0 FPC CONN ZIF FOR SMT ST -LEAD FREE- |
| CHECKED BY      | DATE  |   |
| K. TOYODA       | '05/07/21   |   |
| APPROVED BY     | DATE  | MOLEX INCORPORATED                      |
| N. UKITA        | '05/07/21   |   |
| MATERIAL NO.    | DOCUMENT NO.  | SHEET NO.                               |
| SEE TABLE       | SD-52610-036  | 1 OF 2                                  |
| SIZE            | THIS DRAWING CONTAINS INFORMATION THAT IS PROPRIETARY TO MOLEX INCORPORATED AND SHOULD NOT BE USED WITHOUT WRITTEN PERMISSION |   |
| A3              |   |   |

|              |                        |
|--------------|------------------------|
| 52610-**-15  | MODEL NO.              |
| DESIGN UNITS | THIRD ANGLE PROJECTION |
| METRIC       |                        |

注記(NOTES) :

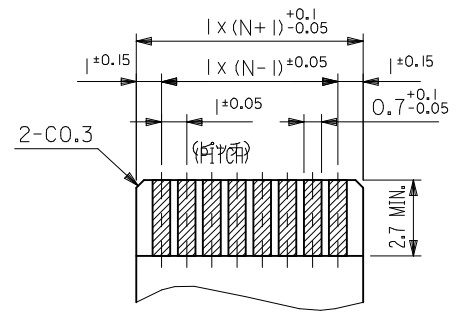
1. 材料(MATERIAL)  
 ハウジング (HOUSING) : 46NYLON , UL94V-0  
 アクチュエータ(ACTUATOR) : PPS , UL94V-0  
 ターミナル(TERMINAL) : リン青銅 (tO. 32)

△ 偶数極に適用。  
 APPLY FOR EVEN CIRCUIT.

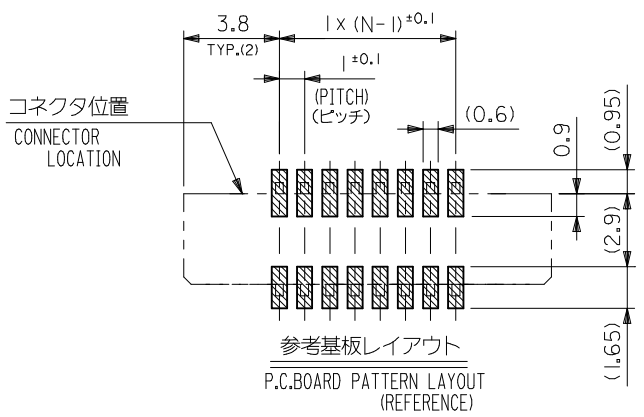
5. 本製品は 52610 シリーズの接点金メッキ品である。  
 THIS PRODUCT IS Au-CONTACT OF 52610 SERIES.

PHOS-BRO  
 接点部 : 金メッキ 0.1μm 以上  
 テール部 : 錫メッキ 1μm 以上  
 下地 : ニッケルメッキ 1μm 以上  
 CONTACT : GOLD 0.1 MICROMETER MINIMUM  
 TAIL : MATTE TIN 1 MICROMETER MINIMUM  
 NICKEL : UNDER 1 MICROMETER MINIMUM

2. エンボステープ梱包時は、アクチュエータがロックした状態とする。  
 IN THE PACKAGE, ACTUATOR OF PART NO. 52610-\*\*59 SHOULD BE LOCKED.
- △ ソルダーテール半田付け面のズレ量は、基準面 [F] に対し上方向 0.05 MAX. ,  
 下方向 0.15 MAX. とする。  
 MISALIGNMENT OF SOLDER TAILS FROM [F] UPPER DIRECTION : 0.05 MAX. ,  
 LOWER DIRECTION : 0.15 MAX.



適合FPC推奨寸法  
 APPLICABLE FPC RECOMMENDED DIM.  
 仕上がり厚さ(THICKNESS) : 0.3 ±0.05

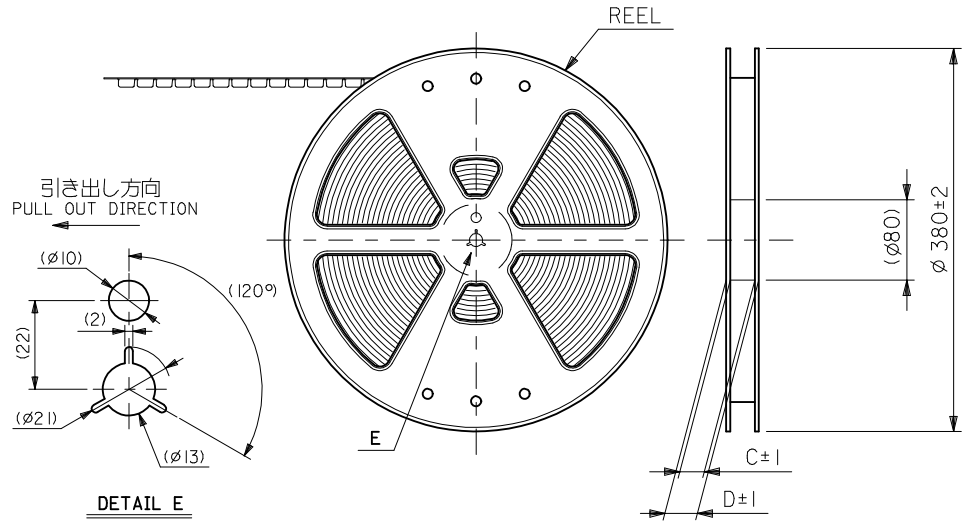


参考基板レイアウト  
 P.C.BOARD PATTERN LAYOUT  
 (REFERENCE)

|      |       |      |    |            |            |            |    |
|------|-------|------|----|------------|------------|------------|----|
| 36.6 | 34.85 | 31.2 | 29 | 52610-3077 | 52610-3072 | 52610-3015 | 30 |
| 32.6 | 30.85 | 27.2 | 25 | 52610-2677 | 52610-2672 | 52610-2615 | 26 |
| 31.6 | 29.85 | 26.2 | 24 | 52610-2577 | 52610-2572 | 52610-2515 | 25 |
| 30.6 | 28.85 | 25.2 | 23 | 52610-2477 | 52610-2472 | 52610-2415 | 24 |
| 28.6 | 26.85 | 23.2 | 21 | 52610-2277 | 52610-2272 | 52610-2215 | 22 |
| 26.6 | 24.85 | 21.2 | 19 | 52610-2077 | 52610-2072 | 52610-2015 | 20 |
| 24.6 | 22.85 | 19.2 | 17 | 52610-1877 | 52610-1872 | 52610-1815 | 18 |
| 23.6 | 21.85 | 18.2 | 16 | 52610-1777 | 52610-1772 | 52610-1715 | 17 |
| 22.6 | 20.85 | 17.2 | 15 | 52610-1677 | 52610-1672 | 52610-1615 | 16 |
| 21.6 | 19.85 | 16.2 | 14 | 52610-1577 | 52610-1572 | 52610-1515 | 15 |
| 20.6 | 18.85 | 15.2 | 13 | 52610-1477 | 52610-1472 | 52610-1415 | 14 |
| 19.6 | 17.85 | 14.2 | 12 | 52610-1377 | 52610-1372 | 52610-1315 | 13 |
| 18.6 | 16.85 | 13.2 | 11 | 52610-1277 | 52610-1272 | 52610-1215 | 12 |
| 17.6 | 15.85 | 12.2 | 10 | 52610-1177 | 52610-1172 | 52610-1115 | 11 |
| 16.6 | 14.85 | 11.2 | 9  | 52610-1077 | 52610-1072 | 52610-1015 | 10 |
| 15.6 | 13.85 | 10.2 | 8  | 52610-0977 | 52610-0972 | 52610-0915 | 9  |
| 14.6 | 12.85 | 9.2  | 7  | 52610-0877 | 52610-0872 | 52610-0815 | 8  |
| 12.6 | 10.85 | 7.2  | 5  | 52610-0677 | 52610-0672 | 52610-0615 | 6  |
| 11.6 | 9.85  | 6.2  | 4  | 52610-0577 | 52610-0572 | 52610-0515 | 5  |

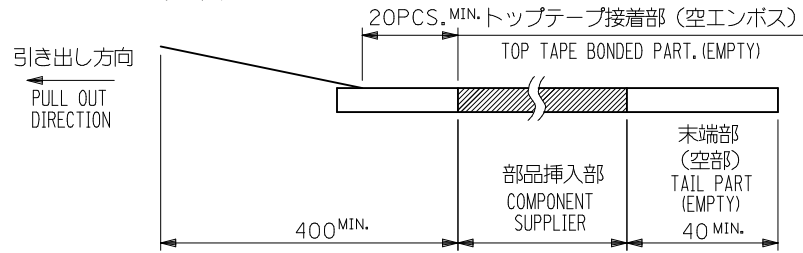
|            |                  |     |   |     |                                   |                |               |            |
|------------|------------------|-----|---|-----|-----------------------------------|----------------|---------------|------------|
| 52610-**15 | D                | (C) | B | (A) | EMBOSSSED TAPE (HIGH BARRIER PKG) | EMBOSSSED TAPE | MATERIAL. NO. | 極数<br>CKT. |
| MODEL NO.  | ORDER No. オーダー番号 |     |   |     |                                   |                |               |            |

|  |  |   |                            |                   |  |                              |                        |  |  |
|--|--|---|----------------------------|-------------------|--|------------------------------|------------------------|--|--|
| REVISED<br>EC NO: J2009-2316<br>DRWN: CARIZONO 2009/04/20<br>CHKD: T. HARUYAMA 2009/04/20<br>APPR: NUKITA 2009/04/21 | GENERAL TOLERANCES (UNLESS SPECIFIED)                |   | DIMENSION STYLE<br>MM ONLY |                   | SCALE<br>---                                     | DESIGN UNITS<br>METRIC       | THIRD ANGLE PROJECTION |  |  |
|  | 10 UNDER   | ±0.2  | DRAWN BY<br>M. NABEI       | DATE<br>'05/07/21 | TITLE<br>1.0 FPC CONN ZIF FOR SMT ST -LEAD FREE- |                              |                        |  |  |
|  | 10 OVER 30 UNDER                                     | ±0.25   | CHECKED BY<br>K. TOYODA    | DATE<br>'05/07/21 | MOLEX INCORPORATED                               |                              |                        |  |  |
|  | 30 OVER  | ±0.3  | APPROVED BY<br>N. UKITA    | DATE<br>'05/07/21 | MATERIAL NO.<br>SEE TABLE                        | DOCUMENT NO.<br>SD-52610-036 | SHEET NO.<br>2 OF 2    |  |  |
|  | ANGULAR ±3 °   | THIS DRAWING CONTAINS INFORMATION THAT IS PROPRIETARY TO MOLEX INCORPORATED AND SHOULD NOT BE USED WITHOUT WRITTEN PERMISSION |                            |                   |  |                              |                        |  |  |
|  | DRAFT WHERE APPLICABLE MUST REMAIN WITHIN DIMENSIONS |   |                            |                   |  |                              |                        |  |  |

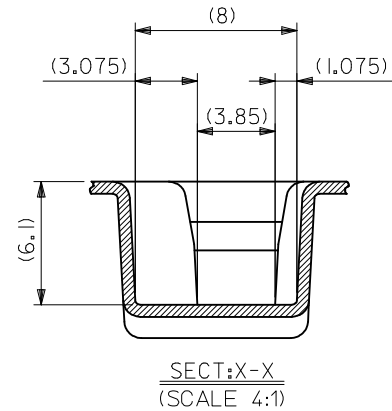
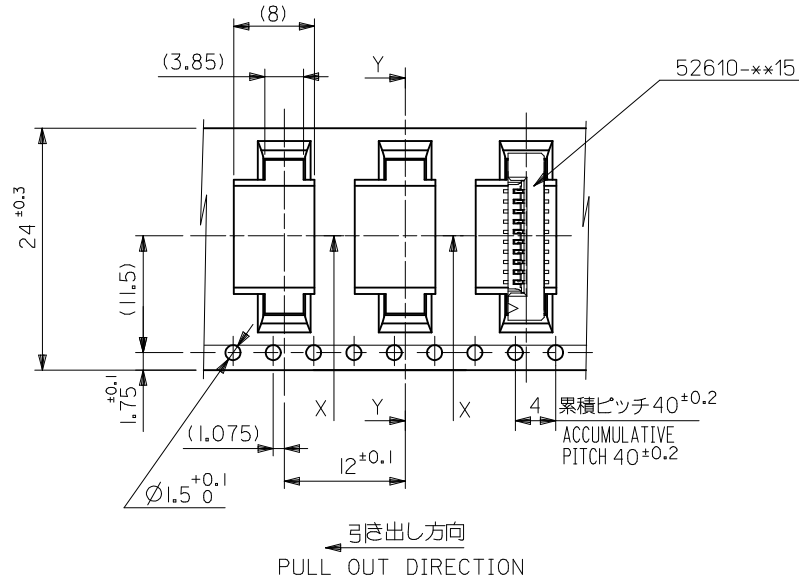
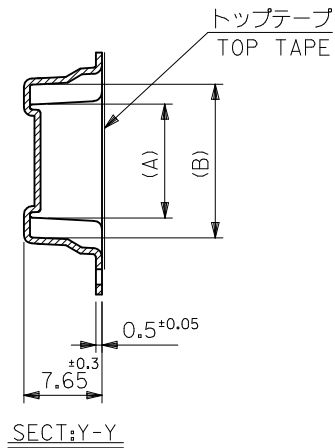


NOTES

- 梱包数量：1000個/リール  
NUMBER OF CONNECTORS : 1000PCS/REEL
- リードテープ長さ LEAD TAPE LENGTH  
20PCS. MIN. トップテープ接着部 (空エンボス)  
TOP TAPE BONDED PART. (EMPTY)  
部品挿入部 COMPONENT SUPPLIER  
末端部 (空部) TAIL PART (EMPTY)  
400 MIN. 40 MIN.
- 52610-\*\*-\*\*15 のアクチュエータはハウジング内に押し下げた状態とする。  
詳細寸法については図面 SD-52610-036 を参照下さい。  
ACTUATOR OF PART NO. 52610-\*\*-\*\*15 SHULD BE LOCKED.  
RE DETAILED DIMENSIONS , SEE SD-52610-036.
- 材料 (MATERIAL)  
キャリアテープ (CARRIER TAPE) : ポリプロピレン (POLYPROPYLENE)  
トップテープ (TOPTAPE) : PET , PE , PEF  
リール (REEL) : ポリスチレン (P S) <リサイクル材を含む>  
POLYSTYRENE (PS) <RECYCLE MATERIAL CONTAINED>
- 本製品は 52610 シリーズの接点金メッキ品である。  
THIS PRODUCT IS Au-CONTACT OF 52610 SERIES.
- 本製品は乾燥剤入り、ハイバリア梱包仕様である。  
THIS PRODUCT IS HIGH BARRIER PACKAGE WITH DESICCANT.



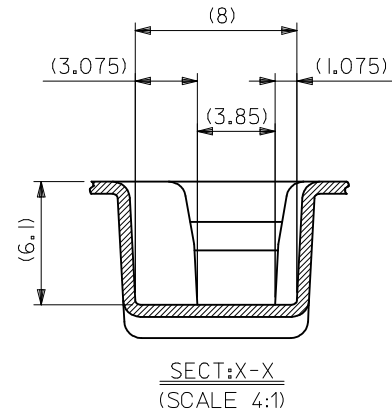
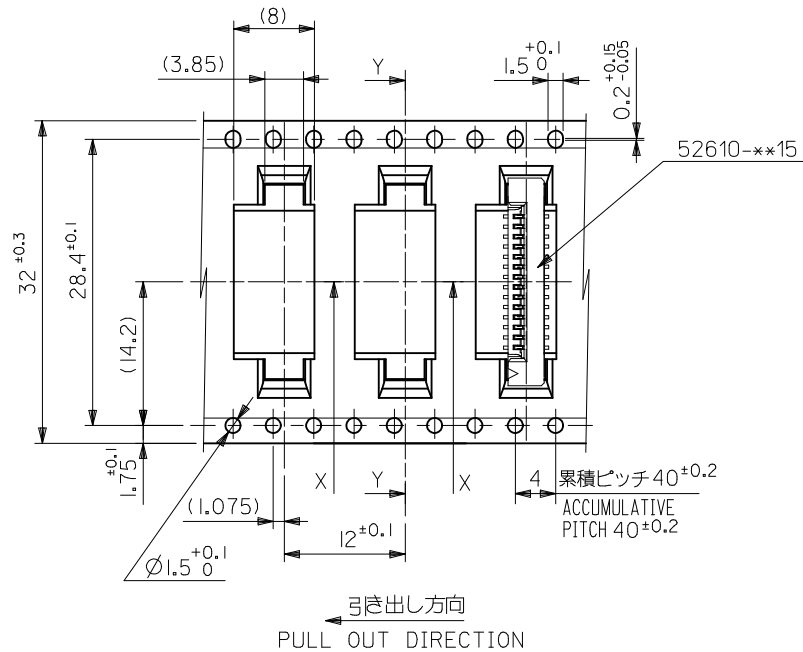
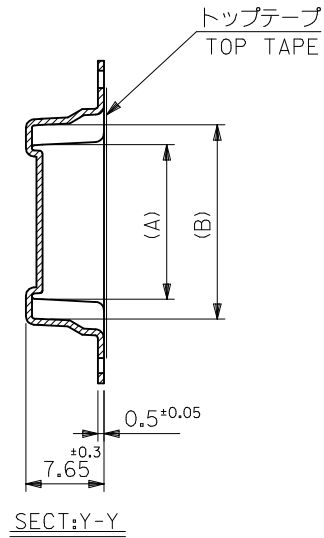
|  |  |   |                            |                   |  |                        |                           |                     |
|--|--|---|----------------------------|-------------------|--|------------------------|---------------------------|---------------------|
| REVISED<br>EC NO: J2009-2061<br>DRWN:TKGN 2009/05/20<br>CHKD:HMATSUMOTO 2009/05/21<br>APPR:NUKITA 2009/05/21 | GENERAL TOLERANCES (UNLESS SPECIFIED)                |   | DIMENSION STYLE<br>MM ONLY |                   | SCALE<br>---   | 52610-**-72            | MODEL NO.                 |                     |
|  | 10 UNDER   | ±0.2  | DRAWN BY<br>M. NABEI       | DATE<br>'05/07/21 | TITLE<br>1.0 FPC CONN SMT ZIF<br>EMBSTP PKG<br>-LEAD FREE- | DESIGN UNITS<br>METRIC | THIRD ANGLE<br>PROJECTION |                     |
|  | 10 OVER 30 UNDER                                     | ±0.25   | CHECKED BY<br>K. TOYODA    | DATE<br>'05/07/21 | APPROVED BY<br>N. UKITA                                    | DATE<br>'05/07/21      | MOLEX INCORPORATED        |                     |
|  | 30 OVER  | ±0.3  | MATERIAL NO.<br>SEE TABLE  |                   | DOCUMENT NO.<br>SD-52610-037                               |                        |                           | SHEET NO.<br>1 OF 5 |
|  | ANGULAR ±3 °   | THIS DRAWING CONTAINS INFORMATION THAT IS PROPRIETARY TO MOLEX INCORPORATED AND SHOULD NOT BE USED WITHOUT WRITTEN PERMISSION |                            |                   |  |                        |                           |                     |
|  | DRAFT WHERE APPLICABLE MUST REMAIN WITHIN DIMENSIONS |   | SIZE<br>A3                 |                   |  |                        |                           |                     |



52610-\*\*-72  
MODEL NO.

|                                |      |      |       |       |            |               |            |
|--------------------------------|------|------|-------|-------|------------|---------------|------------|
| 24                             | 29.4 | 25.4 | 15.25 | 11.32 | 52610-1072 | 10            |            |
|                                |      |      | 14.25 | 10.32 | 52610-0972 | 9             |            |
|                                |      |      | 13.25 | 9.32  | 52610-0872 | 8             |            |
|                                |      |      | 11.25 | 7.32  | 52610-0672 | 6             |            |
|                                |      |      | 10.25 | 6.32  | 52610-0572 | 5             |            |
| キャリアテープ幅<br>CARRIER TAPE WIDTH |      | D    | C     | (B)   | (A)        | MATERIAL. NO. | 極数<br>CKT. |

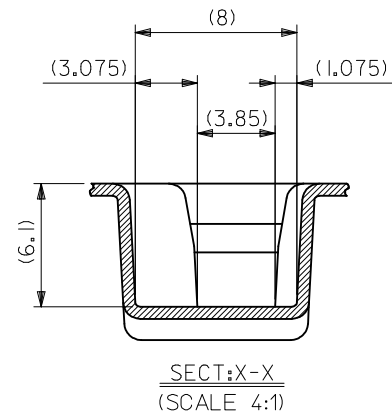
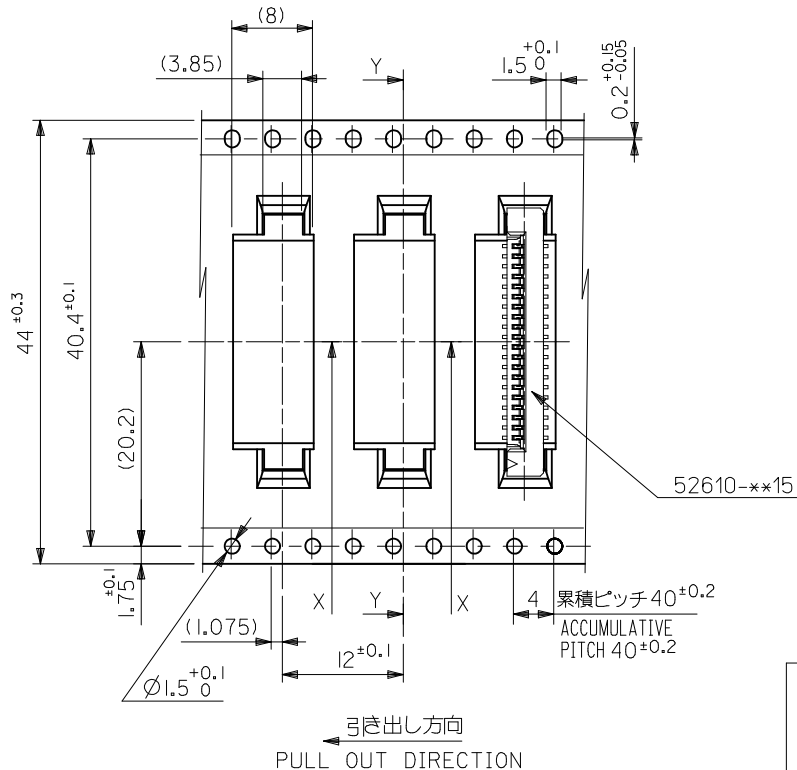
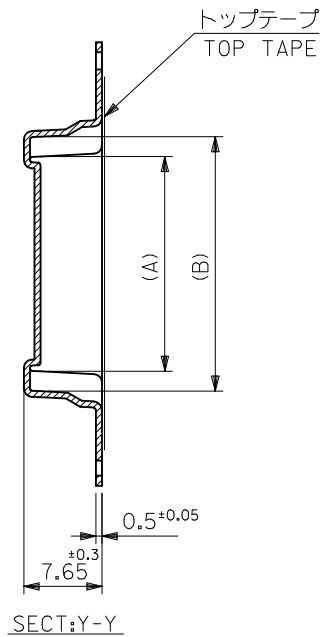
|   |                                       |  |                            |                           |                   |   |  |  |                        |  |
|---|---------------------------------------|--|----------------------------|---------------------------|-------------------|---|--|--|------------------------|--|
| REVISED<br>EC NO.: J2009-2061<br>DRWN:TKON 2009/05/20<br>CHKD:HMATSUMOTO 2009/05/21<br>APPR:NUKITA 2009/05/21 | GENERAL TOLERANCES (UNLESS SPECIFIED) |  | DIMENSION STYLE<br>MM ONLY |                           | SCALE<br>---      |   | DESIGN UNITS<br>METRIC                                     |  | THIRD ANGLE PROJECTION |  |
|   | 10 UNDER                              | ±0.2   | DRAWN BY<br>M. NABEI       |                           | DATE<br>'05/07/21 |   | TITLE<br>1.0 FPC CONN SMT ZIF<br>EMBSTP PKG<br>-LEAD FREE- |  |                        |  |
|   | 10 OVER 30 UNDER                      | ±0.25  | CHECKED BY<br>K. TOYODA    |                           | DATE<br>'05/07/21 |   | MOLEX INCORPORATED<br>SD-52610-037                         |  |                        |  |
|   | 30 OVER                               | ±0.3   | APPROVED BY<br>N. UKITA    |                           | DATE<br>'05/07/21 |   |  |  |                        |  |
| ANGULAR ±3 °  |                                       | DRAFT WHERE APPLICABLE MUST REMAIN WITHIN DIMENSIONS |                            | MATERIAL NO.<br>SEE TABLE |                   | THIS DRAWING CONTAINS INFORMATION THAT IS PROPRIETARY TO MOLEX INCORPORATED AND SHOULD NOT BE USED WITHOUT WRITTEN PERMISSION |  |  |                        |  |



52610-\*\*72  
MODEL NO.

|                                |      |      |       |       |            |              |            |
|--------------------------------|------|------|-------|-------|------------|--------------|------------|
| 32                             | 37.4 | 33.4 | 20.25 | 16.32 | 52610-1572 | 15           |            |
|                                |      |      | 19.25 | 15.32 | 52610-1472 | 14           |            |
|                                |      |      | 18.25 | 14.32 | 52610-1372 | 13           |            |
|                                |      |      | 17.25 | 13.32 | 52610-1272 | 12           |            |
|                                |      |      | 16.25 | 12.32 | 52610-1172 | 11           |            |
| キャリアテープ幅<br>CARRIER TAPE WIDTH |      | D    | C     | (B)   | (A)        | MATERIAL NO. | 極数<br>CKT. |

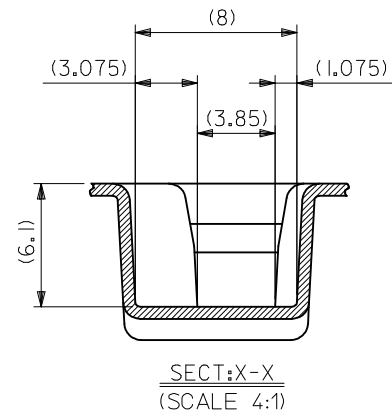
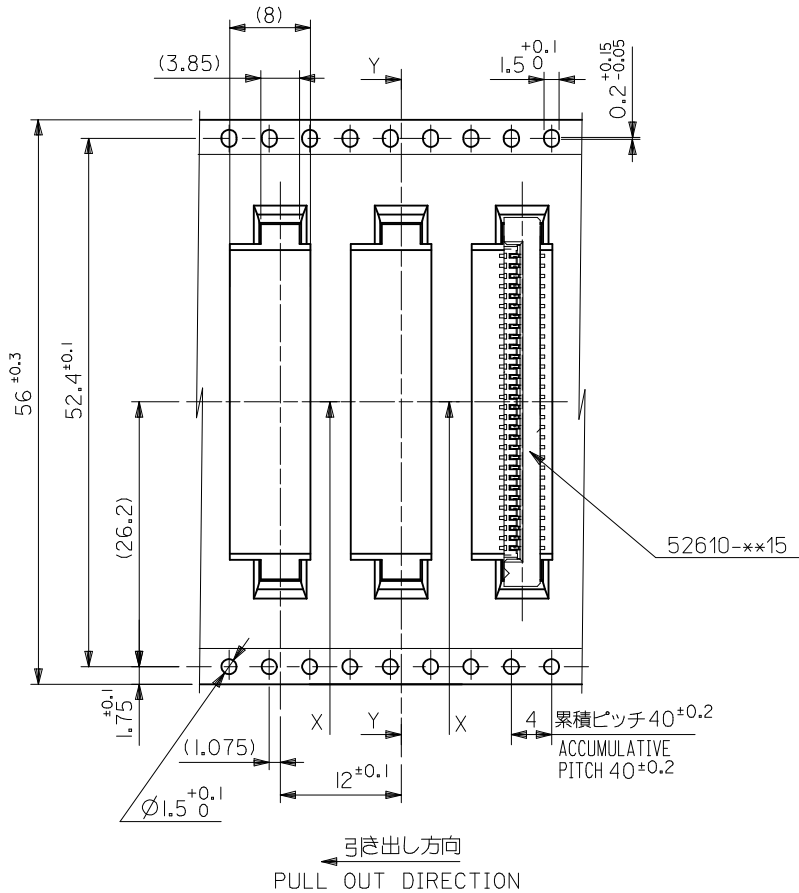
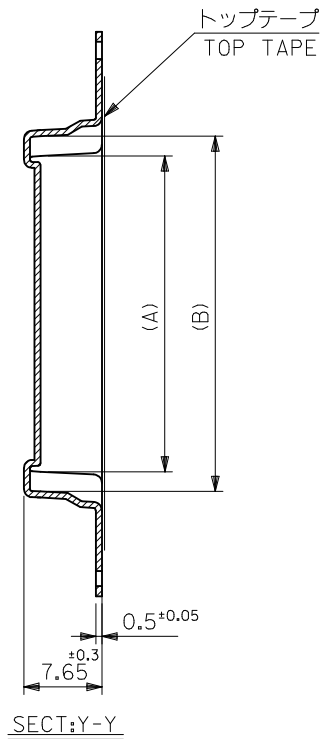
|  |                                       |  |   |                   |  |                              |                        |
|--|---------------------------------------|--|---|-------------------|--|------------------------------|------------------------|
| REVISED<br>EC NO: J2009-2061<br>DRWN:TKON 2009/05/20<br>CHKD:HMATSUMOTO 2009/05/21<br>APPR:NUKITA 2009/05/21 | GENERAL TOLERANCES (UNLESS SPECIFIED) |  | DIMENSION STYLE<br>MM ONLY  |                   | SCALE<br>---   | DESIGN UNITS<br>METRIC       | THIRD ANGLE PROJECTION |
|  | 10 UNDER                              | ±0.2   | DRAWN BY<br>M. NABEI  | DATE<br>'05/07/21 | TITLE<br>1.0 FPC CONN SMT ZIF<br>EMBSTP PKG<br>-LEAD FREE- |                              |                        |
|  | 10 OVER 30 UNDER                      | ±0.25  | CHECKED BY<br>K. TOYODA   | DATE<br>'05/07/21 | MOLEX INCORPORATED   |                              |                        |
|  | 30 OVER                               | ±0.3   | APPROVED BY<br>N. UKITA   | DATE<br>'05/07/21 | MATERIAL NO.<br>SEE TABLE                                  | DOCUMENT NO.<br>SD-52610-037 | SHEET NO.<br>3 OF 5    |
| REV  | DESCRIPTION                           | ANGULAR ±3 °   | THIS DRAWING CONTAINS INFORMATION THAT IS PROPRIETARY TO MOLEX INCORPORATED AND SHOULD NOT BE USED WITHOUT WRITTEN PERMISSION |                   |  |                              |                        |
|  |                                       | DRAFT WHERE APPLICABLE MUST REMAIN WITHIN DIMENSIONS |   |                   |  |                              |                        |



|             |      |                                |       |       |            |     |               |            |
|-------------|------|--------------------------------|-------|-------|------------|-----|---------------|------------|
| 44          | 49.4 | 45.4                           | 31.25 | 27.32 | 52610-2672 | 26  |               |            |
|             |      |                                | 30.25 | 26.32 | 52610-2572 | 25  |               |            |
|             |      |                                | 29.25 | 25.32 | 52610-2472 | 24  |               |            |
|             |      |                                | 27.25 | 23.32 | 52610-2272 | 22  |               |            |
|             |      |                                | 25.25 | 21.32 | 52610-2072 | 20  |               |            |
|             |      |                                | 23.25 | 19.32 | 52610-1872 | 18  |               |            |
|             |      |                                | 22.25 | 18.32 | 52610-1772 | 17  |               |            |
|             |      |                                | 21.25 | 17.32 | 52610-1672 | 16  |               |            |
| 52610-***72 |      | キャリアテープ幅<br>CARRIER TAPE WIDTH | D     | C     | (B)        | (A) | MATERIAL. NO. | 種数<br>CKT. |

|  |                    |  |       |   |                   |   |                        |                              |                     |  |
|--|--------------------|--|-------|---|-------------------|---|------------------------|------------------------------|---------------------|--|
| REVISED<br>EC NO: J2009-2061<br>DRWN:TKON 2009/05/20<br>CHKD:HMATSUMOTO 2009/05/21<br>APPR:NUKITA 2009/05/21 | DESCRIPTION<br>REV | GENERAL TOLERANCES (UNLESS SPECIFIED)                |       | DIMENSION STYLE<br>MM ONLY  |                   | SCALE<br>---  | DESIGN UNITS<br>METRIC | THIRD ANGLE PROJECTION       |                     |  |
|  |                    | 10 UNDER   | ±0.2  | DRAWN BY<br>M. NABEI  | DATE<br>'05/07/21 | TITLE<br>1.0 FPC CONN SMT ZIF<br>EMBOSTP PKG<br>-LEAD FREE- |                        |                              |                     |  |
|  |                    | 10 OVER 30 UNDER                                     | ±0.25 | CHECKED BY<br>K. TOYODA   | DATE<br>'05/07/21 | MOLEX INCORPORATED  |                        |                              |                     |  |
|  |                    | 30 OVER  | ±0.3  | APPROVED BY<br>N. UKITA   | DATE<br>'05/07/21 | MATERIAL NO.<br>SEE TABLE                                   |                        | DOCUMENT NO.<br>SD-52610-037 | SHEET NO.<br>4 OF 5 |  |
| ANGULAR ±3 °   |                    | DRAFT WHERE APPLICABLE MUST REMAIN WITHIN DIMENSIONS |       | THIS DRAWING CONTAINS INFORMATION THAT IS PROPRIETARY TO MOLEX INCORPORATED AND SHOULD NOT BE USED WITHOUT WRITTEN PERMISSION |                   |   |                        |                              |                     |  |





|             |                                |      |      |       |       |               |            |
|-------------|--------------------------------|------|------|-------|-------|---------------|------------|
| 52610-**-72 | 56                             | 61.4 | 57.4 | 35.25 | 31.32 | 52610-3072    | 30         |
| MODEL NO.   | キャリアテープ幅<br>CARRIER TAPE WIDTH | D    | C    | (B)   | (A)   | MATERIAL. NO. | 極数<br>CKT. |

|  |                                       |  |   |                   |  |                              |                        |
|--|---------------------------------------|--|---|-------------------|--|------------------------------|------------------------|
| REVISED<br>EC NO: J2009-2061<br>DRWN:TKON 2009/05/20<br>CHKD:HMATSUMOTO 2009/05/21<br>APPR:NUKITA 2009/05/21 | GENERAL TOLERANCES (UNLESS SPECIFIED) |  | DIMENSION STYLE<br>MM ONLY  |                   | SCALE<br>---   | DESIGN UNITS<br>METRIC       | THIRD ANGLE PROJECTION |
|  | 10 UNDER                              | $\pm 0.2$  | DRAWN BY<br>M. NABEI  | DATE<br>'05/07/21 | TITLE<br>1.0 FPC CONN SMT ZIF<br>EMBSTP PKG<br>-LEAD FREE- |                              |                        |
|  | 10 OVER 30 UNDER                      | $\pm 0.25$   | CHECKED BY<br>K. TOYODA   | DATE<br>'05/07/21 | MOLEX INCORPORATED   |                              |                        |
|  | 30 OVER                               | $\pm 0.3$  | APPROVED BY<br>N. UKITA   | DATE<br>'05/07/21 | MATERIAL NO.<br>SEE TABLE                                  | DOCUMENT NO.<br>SD-52610-037 | SHEET NO.<br>5 OF 5    |
| REV  | DESCRIPTION                           | ANGULAR $\pm 3^\circ$                                | THIS DRAWING CONTAINS INFORMATION THAT IS PROPRIETARY TO MOLEX INCORPORATED AND SHOULD NOT BE USED WITHOUT WRITTEN PERMISSION |                   |  |                              |                        |
|  |                                       | DRAFT WHERE APPLICABLE MUST REMAIN WITHIN DIMENSIONS |   |                   |  |                              |                        |



Компания «ЭлектроПласт» предлагает заключение долгосрочных отношений при поставках импортных электронных компонентов на взаимовыгодных условиях!

Наши преимущества:

- Оперативные поставки широкого спектра электронных компонентов отечественного и импортного производства напрямую от производителей и с крупнейших мировых складов;
- Поставка более 17-ти миллионов наименований электронных компонентов;
- Поставка сложных, дефицитных, либо снятых с производства позиций;
- Оперативные сроки поставки под заказ (от 5 рабочих дней);
- Экспресс доставка в любую точку России;
- Техническая поддержка проекта, помощь в подборе аналогов, поставка прототипов;
- Система менеджмента качества сертифицирована по Международному стандарту ISO 9001;
- Лицензия ФСБ на осуществление работ с использованием сведений, составляющих государственную тайну;
- Поставка специализированных компонентов (Xilinx, Altera, Analog Devices, Intersil, Interpoint, Microsemi, Aeroflex, Peregrine, Syfer, Eurofarad, Texas Instrument, Miteq, Cobham, E2V, MA-COM, Hittite, Mini-Circuits, General Dynamics и др.);

Помимо этого, одним из направлений компании «ЭлектроПласт» является направление «Источники питания». Мы предлагаем Вам помощь Конструкторского отдела:

- Подбор оптимального решения, техническое обоснование при выборе компонента;
- Подбор аналогов;
- Консультации по применению компонента;
- Поставка образцов и прототипов;
- Техническая поддержка проекта;
- Защита от снятия компонента с производства.



#### Как с нами связаться

**Телефон:** 8 (812) 309 58 32 (многоканальный)

**Факс:** 8 (812) 320-02-42

**Электронная почта:** [org@eplast1.ru](mailto:org@eplast1.ru)

**Адрес:** 198099, г. Санкт-Петербург, ул. Калинина, дом 2, корпус 4, литера А.