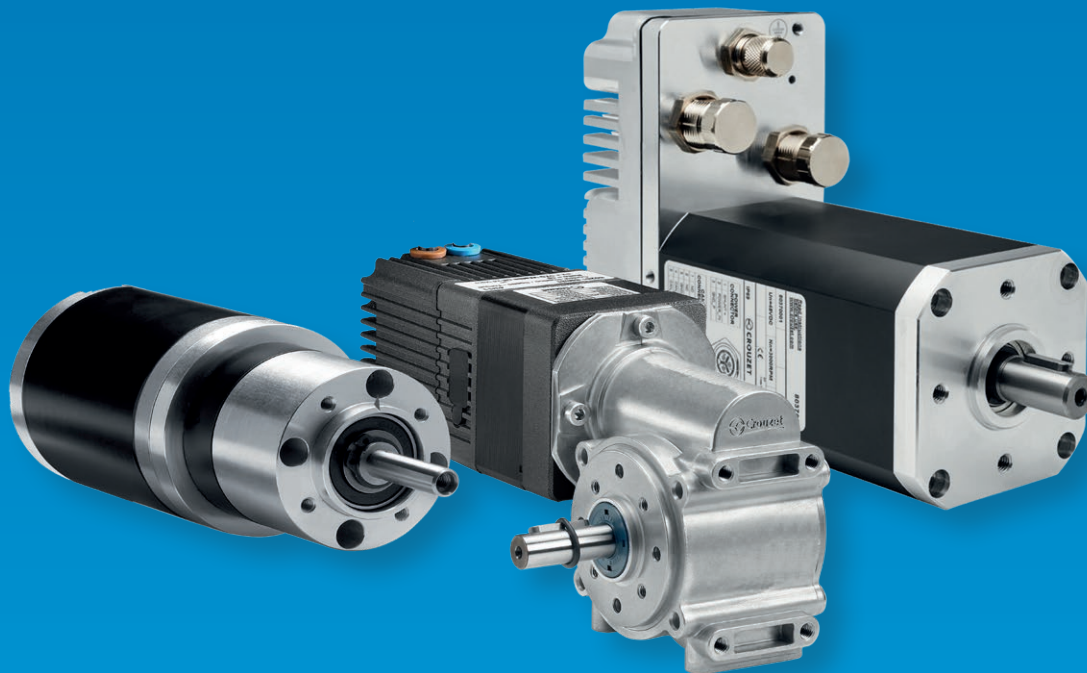


OVERVIEW

MOTORS & GEARMOTORS



BRUSH

BRUSHLESS

SYNCHRONOUS

STEPPER

ABOUT CROUZET

The Motion product line provides innovative engineering expertise, high quality service and a complete offer of standard direct drives, geared motors and motion control solutions for applications where performance is key. Our ability to customize solutions as per virtually any customers' request makes us the right partner to tackle the most demanding projects.

Crouzet is a brand of InnoVista Sensors™.

With a long-term commitment to technological excellence, the engineering teams have mastered the following core technologies and know-how:

- › Electromagnetism
- › Thermal dynamics
- › Electromechanical systems
- › Electronic drives

Covering the power range from 1 to 1000 W peak (1/100 to 1HP+) and available with spur, worm or planetary gearboxes, plus adapted controllers, our offer is specifically designed for access control systems, pumps and valves, railway applications, electrical equipment, medical equipment and the industry.



InnoVista Sensors™ is a worldwide industrial specialist of sensors, controllers and actuators for automated systems.

Through its brand Crouzet, InnoVista Sensors™ offers a wide range of reliable, efficient and customizable components dedicated to the Aerospace & Defense, Transportation and Industrial markets and segments.

Thanks to the recognized expertise of its teams and a strong innovation policy, InnoVista Sensors™ brings performance enhancing solutions to its customers worldwide.

InnoVista Sensors™: your trusted partner of choice to face industrial challenges of today and tomorrow.

www.innovistasensors.com

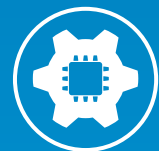
Designs & Manufactures



Sensors



Controls



Actuators

For



Aerospace
& Defense



Transportation



Industry

MOTORS, CONTROL ELECTRONICS AND GEARBOXES

CHARACTERISTICS	MOTORS									
	Industrial Brush			DCmind Brush		DCmind Brushless		Synchronous		Stepper
	82840 82860	82800 10 50	82830 82890	89800 10 50	89830 89890	80140 180 280	80350 60 70	82510 20 30 40	82340 82330	82910 20 30 40
Nominal power (W)	0.9 / 3	9 → 33	30 → 95	15 → 35	55 / 104	66 → 170	310 → 600	0.3 → 3	0.2 / 0.4	0.5 → 5
Voltage	12 / 24 V _{DC}	12 → 48 V _{DC}	12 → 48 V _{DC}	12 → 48 V _{DC}	12 → 120 V _{DC}	9 → 75 V _{DC}	9 → 75 V _{DC}	24 → 240 V _{AC} 50 → 60 Hz	24 → 240 V _{AC} 50 → 60 Hz	3 → 64 V _{DC}
Front side (mm)	∅ 32	∅ 42	∅ 63	∅ 42	∅ 63	SQ57	SQ75	∅ 35 / 51 ∅ 57 / 65	∅ 47	∅ 35 / 51 ∅ 57 / 65
Nominal speed (rpm)	3700	3000	3000	3000	3000	3000	3000	250 - 600	600 / 720	0 - 1500
Nominal torque (mNm)	2.2 / 7.7	41 → 100	170 / 270	50 → 110	180 / 290	125 → 550	830 → 1900	10 → 110	2.5 → 8	15 → 300
Noise level (dBA)	55	55	55	35	35	45	50	30	45	35
Service life (hrs)	2000	3000	5000	4000	5000	20000	20000	20000	10 M on / off	20000
Certification										
Gearboxes										
Connection										
Standard										
Options										
IP	IP20			IP65*		IP54	IP65*, IP67* IP69*	IP40	IP30	IP40

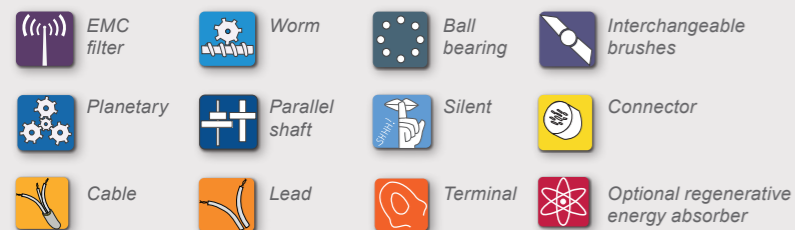
* Except front face & shaft

CHARACTERISTICS	CONTROL ELECTRONICS				
	Integrated			External	
	TNi21	SMi21	SMi22	BDE 30	BDE 40
Compatible models	SQ57		SQ75	SQ57	
Speed-torque	●	●	●	●	●
Position (c/t)		4096	4096		
Programming		DCmind Soft & DCmind Soft + CANopen		DCmind Soft + CANopen	
Communication bus		CANopen Optional	CANopen Standard	PWM or 0 → 10 VDC	
Voltage	10 → 36 V _{DC}	9 → 75 V _{DC}	9 → 75 V _{DC}	18 → 36 V _{DC}	10 → 36 V _{DC}
Maximum current (A)	17	17	75	10	14
Adaptations	Programs: Custom firmware as per customer specifications				

CHARACTERISTICS	GEARBOXES		
	Parallel shafts	Planetary	Worm
	10 models	7 models	2 models
Torque (Nm)	0.5 → 6	0.8 → 120	10 → 20
Power (W)	0.2 → 50	8 → 600	25 → 600
Service life (Mt*)	1 → 10	50	50
Ratios	4 → 4500	4 → 308	5 → 100
Options	Shafts: stainless steel, pulleys, pinions, special bearings etc.		

* Million revolutions

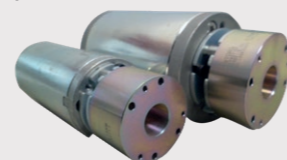
LEGENDE



ACCESSORIES & OPTIONS

All our motor ranges can be accompanied by factory-mounted encoders and mechanical brakes:

- › Brakes from 0.25 N.m to 4.5 N.m
- › Encoders from 1 to 3600 points/rev
- › Special connectors
- › Special output shaft



ADAPTED PRODUCTS

To meet your expectations, Crouzet offers you custom products matching your requirements, in the following areas:

- › Control electronics
- › Motor characteristics
- › Gearboxes
- › IP65, IP67, IP69
- › EtherCAT



ADAPTATION WHEEL

To meet market expectations and provide customers with the right solutions within the shortest timeframes, Crouzet has structured all company processes around the different types of product: standard products, adapted products or products specially developed for a customer. Introducing the adaptation wheel...

SPECIAL PRODUCTS

When the adaptation is no longer suitable, we focus our design, manufacturing and qualification expertise on developing a new product designed to meet your requirements.

4

STANDARD PRODUCTS

We offer a full range of motors and geared motors, including AC synchronous, brush and brushless DC and stepper motors. Our products are available immediately so you can quickly implement your projects.

1

ADAPTED PRODUCTS

All projects are different, so we adapt the performance and functionality of each product to your requirements, ensuring the success of your most complex applications.

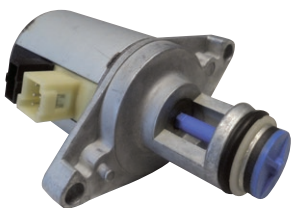
3

PRODUCTS WITH ADDED VALUE

All our standard products can be complemented by factory-installed extras, accessories or programs including connectors, special contacts, software etc., to assist integration into your equipment, simplify your logistics and maximize the reliability of your installations.

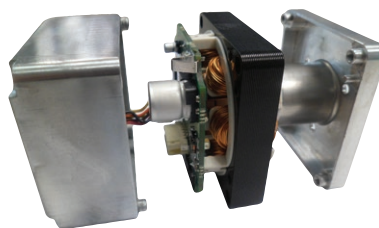
2

ACTUAL EXAMPLES



Releasable linear actuator for gas boilers equipped with a stepper motor:

- › Gas flow adjustment
- › Automatic closing in the event of a power failure
- › Gas-tightness measured on the production line



Gear pump equipped with a brushless motor:

- › Rotor with leak tight seal
- › Application-specific electronics
- › Shortened motor



Brushless motor with integrated electronics for Access Control in public transportation applications:

- › Autonomous torque, speed and position control
- › Specific firmware with integrated emergency mode
- › Reinforced gearbox
- › CANopen communication
- › High resistance against vandalism

AMERICAS**CANADA**

Tel.: +1 (855) 929-5465
americas.custserv@crouzet.com

MEXICO

Tel.: +1 (855) 929-5465
americas.custserv@crouzet.com

USA

+1 (855) 929-5465
americas.custserv@crouzet.com

COUNTRIES NOT LISTED

+1 (855) 929-5465
americas.custserv@crouzet.com

EUROPE / MIDDLE EAST / AFRICA**BELGIUM**

Tel.: +32 (0) 2 620 06 05
Fax: +32 (0) 2 461 00 23
klantenservice@crouzet.com

FRANCE

Tel.: +33 (0) 475 802 101
Fax: +33 (0) 475 828 900
relationclient@crouzet.com

GERMANY / AUSTRIA

Tel.: +49 (0) 2103/9385930
Fax: +49 (0) 2103/980-222
kundenservice@crouzet.com

ITALY

Tel.: +39 (02) 38 594 099
Fax: +39 (02) 82 952 104
assistenzaclienti@crouzet.com

SPAIN / PORTUGAL

Tel.: +34 (91) 215 80 95
Fax: +34 (93) 2 20 02 05
atencionalcliente@crouzet.com

SWITZERLAND

Tel.: +41 (0) 225 67 57 90
Fax: +41 (0) 565 88 02 75
kundenservice@crouzet.com

THE NETHERLANDS

Tel.: +31 (0) 20-654 52 20
klantenservice@crouzet.com

UNITED KINGDOM

Tel.: +44 (0) 2076 600 025
customer.relation@crouzet.com

COUNTRIES NOT LISTED

Tel.: +33 (0) 475 802 102
Fax: +33 (0) 475 828 900
customer.relation@crouzet.com

ASIA / PACIFIC**CHINA**

Tel.: +86 (21) 8025 7166
Fax: +86 (21) 6107 1771
china@crouzet.com

INDIA

Tel.: +91 (80) 6762 4501/500
india@crouzet.com

SOUTH KOREA

Tel.: +82 (2) 2679 8312
Fax: +82 (2) 2679 9888
korea@crouzet.com

EAST ASIA PACIFIC

Tel.: +86 (21) 8025 7177
Fax: +86 (21) 6107 1771
eap@crouzet.com

Warning:

The product information contained in this catalogue is given purely as information and does not constitute a representation, warranty or any form of contractual commitment. Crouzet Automatismes SAS and its subsidiaries reserve the right to modify their products without notice. It is imperative that we should be consulted over any particular use or application of our products and it is the responsibility of the buyer to establish, particularly through all the appropriate tests, that the product is suitable for the use or application. Under no circumstances will our warranty apply, nor shall we be held responsible for any application (such as any modification, addition, deletion, use in conjunction with other electrical or electronic components, circuits or assemblies, or any other unsuitable material or substance) which has not been expressly agreed by us prior to the sale of our products.



Компания «ЭлектроПласт» предлагает заключение долгосрочных отношений при поставках импортных электронных компонентов на взаимовыгодных условиях!

Наши преимущества:

- Оперативные поставки широкого спектра электронных компонентов отечественного и импортного производства напрямую от производителей и с крупнейших мировых складов;
- Поставка более 17-ти миллионов наименований электронных компонентов;
- Поставка сложных, дефицитных, либо снятых с производства позиций;
- Оперативные сроки поставки под заказ (от 5 рабочих дней);
- Экспресс доставка в любую точку России;
- Техническая поддержка проекта, помощь в подборе аналогов, поставка прототипов;
- Система менеджмента качества сертифицирована по Международному стандарту ISO 9001;
- Лицензия ФСБ на осуществление работ с использованием сведений, составляющих государственную тайну;
- Поставка специализированных компонентов (Xilinx, Altera, Analog Devices, Intersil, Interpoint, Microsemi, Aeroflex, Peregrine, Syfer, Eurofarad, Texas Instrument, Miteq, Cobham, E2V, MA-COM, Hittite, Mini-Circuits, General Dynamics и др.);

Помимо этого, одним из направлений компании «ЭлектроПласт» является направление «Источники питания». Мы предлагаем Вам помощь Конструкторского отдела:

- Подбор оптимального решения, техническое обоснование при выборе компонента;
- Подбор аналогов;
- Консультации по применению компонента;
- Поставка образцов и прототипов;
- Техническая поддержка проекта;
- Защита от снятия компонента с производства.



Как с нами связаться

Телефон: 8 (812) 309 58 32 (многоканальный)

Факс: 8 (812) 320-02-42

Электронная почта: org@eplast1.ru

Адрес: 198099, г. Санкт-Петербург, ул. Калинина, дом 2, корпус 4, литера А.