

TVM SERIES



Description

The TVM Series Provides protection for motors and other sensitive loads. Continuously measures the voltage of each of the three phases using a microcomputer circuit design that senses under and overvoltage, voltage unbalance, phase loss, and phase reversal. Protection is provided even when regenerated voltages are present. Includes a trip delay to prevent nuisance tripping and a restart delay to prevent short cycling after a momentary power outage.

Operation

Upon application of line voltage, the restart delay begins. The output relay is de-energized during restart delay. Under normal conditions, the output energizes after restart delay. Undervoltage, overvoltage, and voltage unbalance must be sensed for continuous trip delay period before the output is de-energized. The output will not de-energize if a fault is corrected during the trip delay. The restart delay begins as soon as the output relay de-energizes. If the restart delay is completed when the fault is corrected, the output relay will energize immediately.

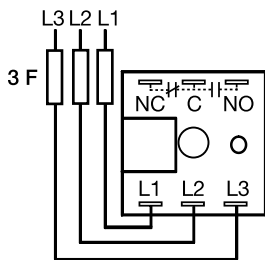
The output relay will not energize if a fault or phase reversal is sensed as 3-phase input voltage is applied.

Reset: Reset is automatic upon correction of a fault.

LED Operation

The LED flashes green during the restart delay, then glows green when the output energizes. It flashes red during the trip delay then glows red when the output de-energizes. It flashes red/green if phase reversal is sensed.

Wiring Diagram



L1 = Phase A
L2 = Phase B
L3 = Phase C
NO = Normally Open
NC = Normally Closed
C = Common, Transfer Contact

Relay contacts are isolated.

F = 2A Fast acting fuses are recommended, but not required

Ordering Information

| MODEL | LINE VOLTAGE | VOLTAGE UNBALANCE | TRIP DELAY | RESTART DELAY |
|-----------------|--------------|-------------------|------------|---------------|
| TVM208A100.5S3S | 208VAC | 10% | 0.5s | 3s |
| TVM230A101S1S | 230VAC | 10% | 1s | 1s |
| TVM460A41S5M | 460VAC | 4% | 1s | 5m |
| TVM460A75S2M | 460VAC | 7% | 5s | 2m |
| TVM480A45S5S | 480VAC | 4% | 5s | 5s |
| TVM480A100.5S3S | 480VAC | 10% | 0.5s | 3s |

If you don't find the part you need, call us for a custom product 800-843-8848

Features & Benefits

| FEATURES | BENEFITS |
|--|---|
| Proprietary microcontroller based circuitry | Constant monitoring to protect against phase loss, phase reversal; over, under, and unbalanced voltage; short cycling |
| Compact design measures 2 in. (50.8mm) square | Perfect for OEM applications where cost, size and ease of installation are important |
| LED indication | Provides diagnostics of relay, fault and time delay status |
| Encapsulated | Protects against shock, vibration and humidity |

TVM SERIES

Accessories



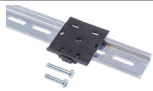
LPSM003ZXID (Indicating), LPSM003Z (Non-indicating) Fuse Holders
Littelfuse POWR-SAFE Dead Front holders provide optimum protection to personnel for Class CC and Midget-Style fuses. 600 VAC/DC



OKLK002.T Midget Fuse (2 Amp)
10 x 38 fast acting, high-interrupting capacity, current-limiting type fuse. 600 Vac/500 Vdc



P1015-13 (AWG 10/12), P1015-64 (AWG 14/16), P1015-14 (AWG 18/22) Female Quick Connect
These 0.25 in. (6.35 mm) female terminals are constructed with an insulator barrel to provide strain relief.



P1023-20 DIN Rail Adapter
Allows module to be mounted on a 35 mm DIN type rail with two #10 screws.



VRM6048 Voltage Reduction Module
Allows the voltage monitor to monitor a 3-phase 550 to 600VAC Line.

Specifications

Line Voltage Type

3-phase delta or wye with no connection to neutral

Input Voltage

208 to 480VAC

AC Line Frequency

50 - 100 Hz

Phase Sequence

ABC

Power Consumption

Approx. 2W for 240V units
Approx. 3W for 480V units

Overvoltage, Undervoltage, & Voltage Unbalance

Overvoltage & Undervoltage

Voltage detection with delay trip & automatic reset

Undervoltage Trip Point

88 - 92% of the selected line voltage

Reset Voltage

≅ +3% of trip voltage

Overvoltage Trip Point

109 - 113% of the selected line voltage

Reset Voltage

≅ -3% of trip voltage

Trip Variation vs Temperature

≤ ±2%

Voltage Unbalance

Factory fixed from 4 - 10%

Reset On Balance

≅ -0.7% unbalance

Trip Delay Range

Fixed from 0.2 - 100s ±15% or ±0.1s, whichever is greater

Restart Delay Range

Fixed from 0.5s - 999m ±15% or ±0.2s, whichever is greater

Phase Reversal & Phase

Loss Response

≤ 200ms; automatic reset

Phase Loss

≥ 25% unbalance

Output

Type

Isolated SPDT relay contacts

Rating

208 to 240VAC (55°C)

10A resistive @ 125VAC, 5A @ 250VAC, 1/4 hp @ 125VAC

380 to 480VAC

10A resistive @ 240VAC, 1/4 hp @ 125VAC, 1/3 hp @ 250VAC, max. voltage 277VAC
Mechanical - 1 x 10⁶; Electrical - 1 x 10⁵

Life

Protection

Phase Reversal/Failure

ASME A17.1 Rule 210.6

Motors and Generators

NEMA MG1 14:30, 14:35

Surge

IEEE C62.41-1991 Level B

Dielectric Breakdown

208 to 240VAC

≥ 1500V RMS input to output terminals

380 to 480VAC

≥ 2500V RMS input to output terminals

Mechanical

Mounting

Surface mount with one #8 (M5 x 0.8) screw

Dimensions

H 50.8 mm (2.0"); **W** 50.8 mm (2.0");

D 31.75 mm (1.25")

Termination

0.25 in. (6.35 mm) male quick connect terminals

Environmental

Operating/Storage

Temperature

-40° to 55°C / -40° to 85°C

Humidity

95% relative, non-condensing

Weight

≅ 2.8 oz (79 g)



Компания «ЭлектроПласт» предлагает заключение долгосрочных отношений при поставках импортных электронных компонентов на взаимовыгодных условиях!

Наши преимущества:

- Оперативные поставки широкого спектра электронных компонентов отечественного и импортного производства напрямую от производителей и с крупнейших мировых складов;
- Поставка более 17-ти миллионов наименований электронных компонентов;
- Поставка сложных, дефицитных, либо снятых с производства позиций;
- Оперативные сроки поставки под заказ (от 5 рабочих дней);
- Экспресс доставка в любую точку России;
- Техническая поддержка проекта, помощь в подборе аналогов, поставка прототипов;
- Система менеджмента качества сертифицирована по Международному стандарту ISO 9001;
- Лицензия ФСБ на осуществление работ с использованием сведений, составляющих государственную тайну;
- Поставка специализированных компонентов (Xilinx, Altera, Analog Devices, Intersil, Interpoint, Microsemi, Aeroflex, Peregrine, Syfer, Eurofarad, Texas Instrument, Miteq, Cobham, E2V, MA-COM, Hittite, Mini-Circuits, General Dynamics и др.);

Помимо этого, одним из направлений компании «ЭлектроПласт» является направление «Источники питания». Мы предлагаем Вам помощь Конструкторского отдела:

- Подбор оптимального решения, техническое обоснование при выборе компонента;
- Подбор аналогов;
- Консультации по применению компонента;
- Поставка образцов и прототипов;
- Техническая поддержка проекта;
- Защита от снятия компонента с производства.



Как с нами связаться

Телефон: 8 (812) 309 58 32 (многоканальный)

Факс: 8 (812) 320-02-42

Электронная почта: org@eplast1.ru

Адрес: 198099, г. Санкт-Петербург, ул. Калинина, дом 2, корпус 4, литера А.