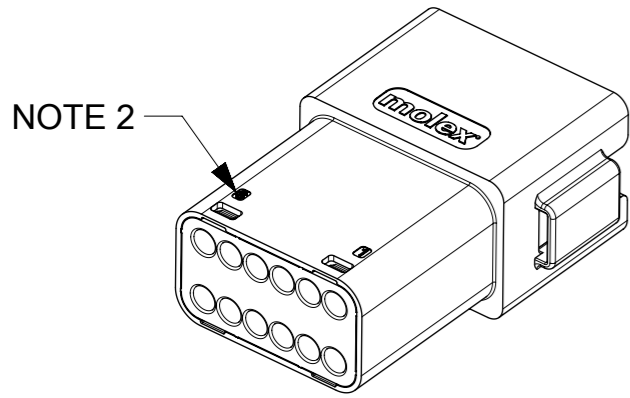


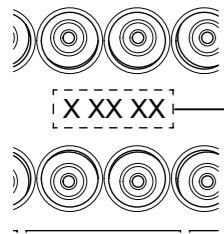
**NOTES**  
 1. SEE SHEETS 2 - 9 FOR UNSPECIFIED NOTES, DIMENSIONS & PART NUMBERS

|         |  |   |                             |                                 |        |                                 |  |
|---------|--|---|-----------------------------|---------------------------------|--------|---------------------------------|--|
| SYMBOLS |  | THIS DRAWING CONTAINS INFORMATION THAT IS PROPRIETARY TO MOLEX ELECTRONIC TECHNOLOGIES, LLC AND SHOULD NOT BE USED WITHOUT WRITTEN PERMISSION |                             | CURRENT REV DESC: SEE LONG TEXT |        | <b>molex</b>                    |  |
| ▽ = 0   | DIMENSION UNITS                                      | SCALE   |                             |                                 |        |                                 |  |
| ▽ = 0   | mm   | 1.25:1  |                             |                                 |        | PRODUCT CUSTOMER DRAWING        |  |
| ▽ = 0   | GENERAL TOLERANCES (UNLESS SPECIFIED)                |   | EC NO: 619923               |                                 |        | DOCUMENT NUMBER                 |  |
| ▽ = 0   | ANGULAR TOL ± 2.0°                                   |   | DRWN: JFLETCHER 2019/07/01  |                                 |        | 934430060                       |  |
| ▽ = 0   | 4 PLACES ±   |   | CHK'D: IOCONNELL 2019/08/15 |                                 |        | DOC TYPE DOC PART REVISION      |  |
| ▽ = 0   | 3 PLACES ±   |   | APPR: IOCONNELL 2019/08/16  |                                 |        | PSD 000 C3                      |  |
| ▽ = 0   | 2 PLACES ± 0.1                                       |   | INITIAL REVISION:           |                                 |        | MATERIAL NUMBER                 |  |
| ▽ = 0   | 1 PLACE ± 0.2  |   | DRWN: JFLETCHER 2015/12/16  |                                 |        | CUSTOMER                        |  |
| ▽ = 0   | 0 PLACES ±   |   | APPR: JDWALLACE 2016/01/14  |                                 |        | SHEET NUMBER                    |  |
| ■ = 0   | DRAFT WHERE APPLICABLE MUST REMAIN WITHIN DIMENSIONS |   | THIRD ANGLE PROJECTION      | DRAWING                         | SERIES | SEE CHART GENERAL MARKET 1 OF 9 |  |
| ▽ = 0   |  |   | ⊕                           | A3-SIZE                         | 93443  |                                 |  |

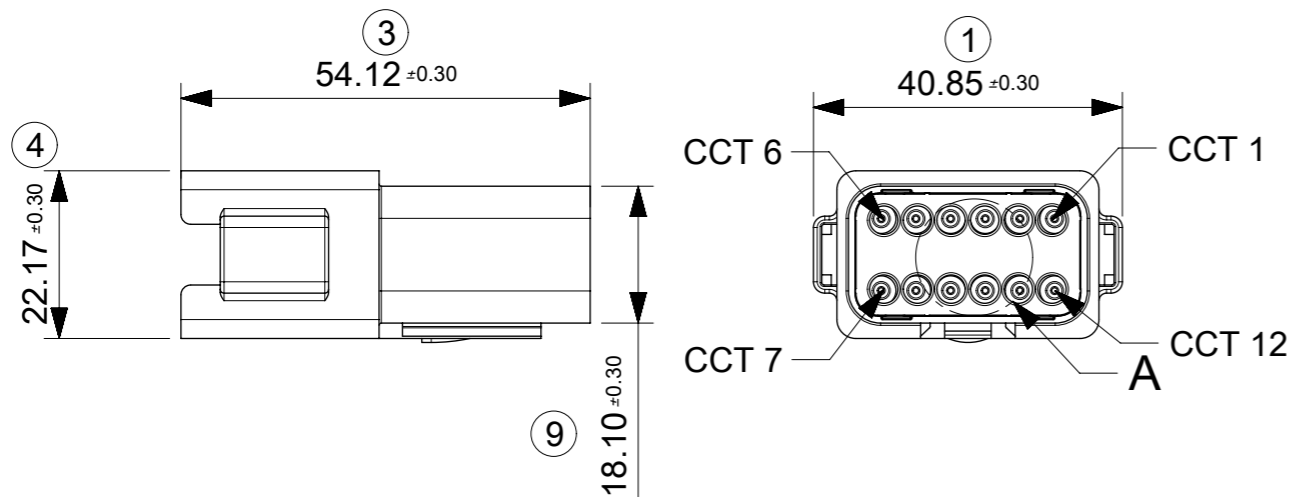
12CCT RECEPTACLE CONNECTOR



DATE CODE: X XX XX  
 X — DAY: 1- 7  
 X — WEEK: 01 - 52  
 X — YEAR: 00 - 99  
 # — MACHINE NO. 1  
 EXAMPLE: 11315 = DAY 1, WEEK 13, YEAR 15  
 i.e. 23rd OF MARCH 2015



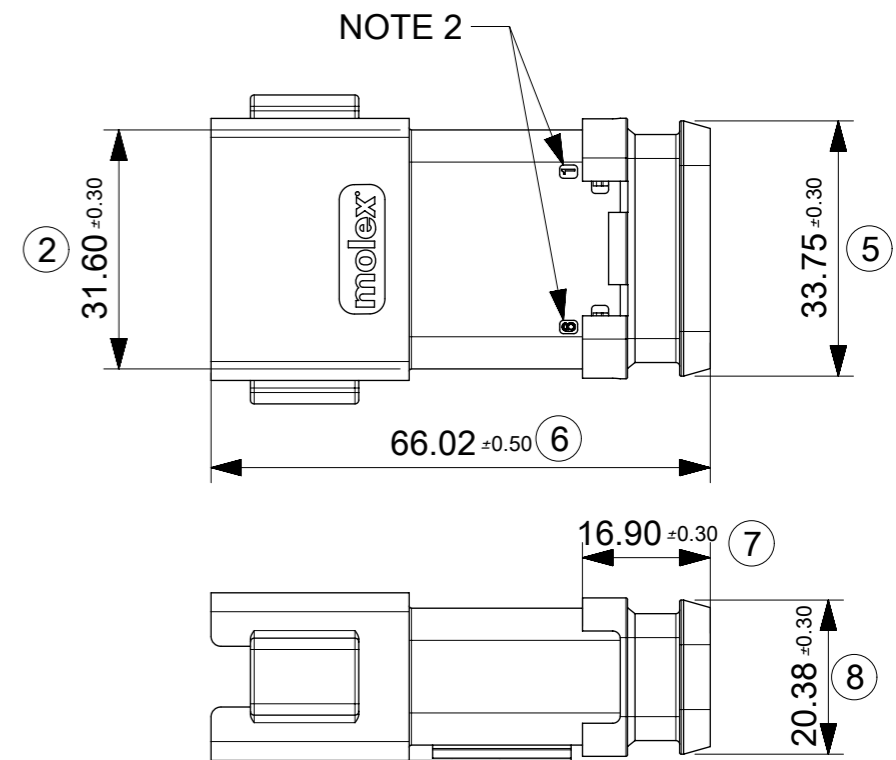
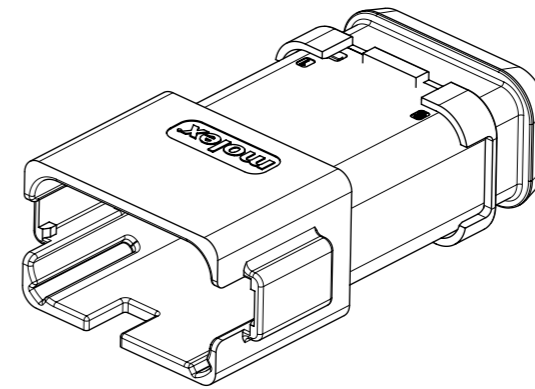
DETAIL A  
 SCALE 2:1



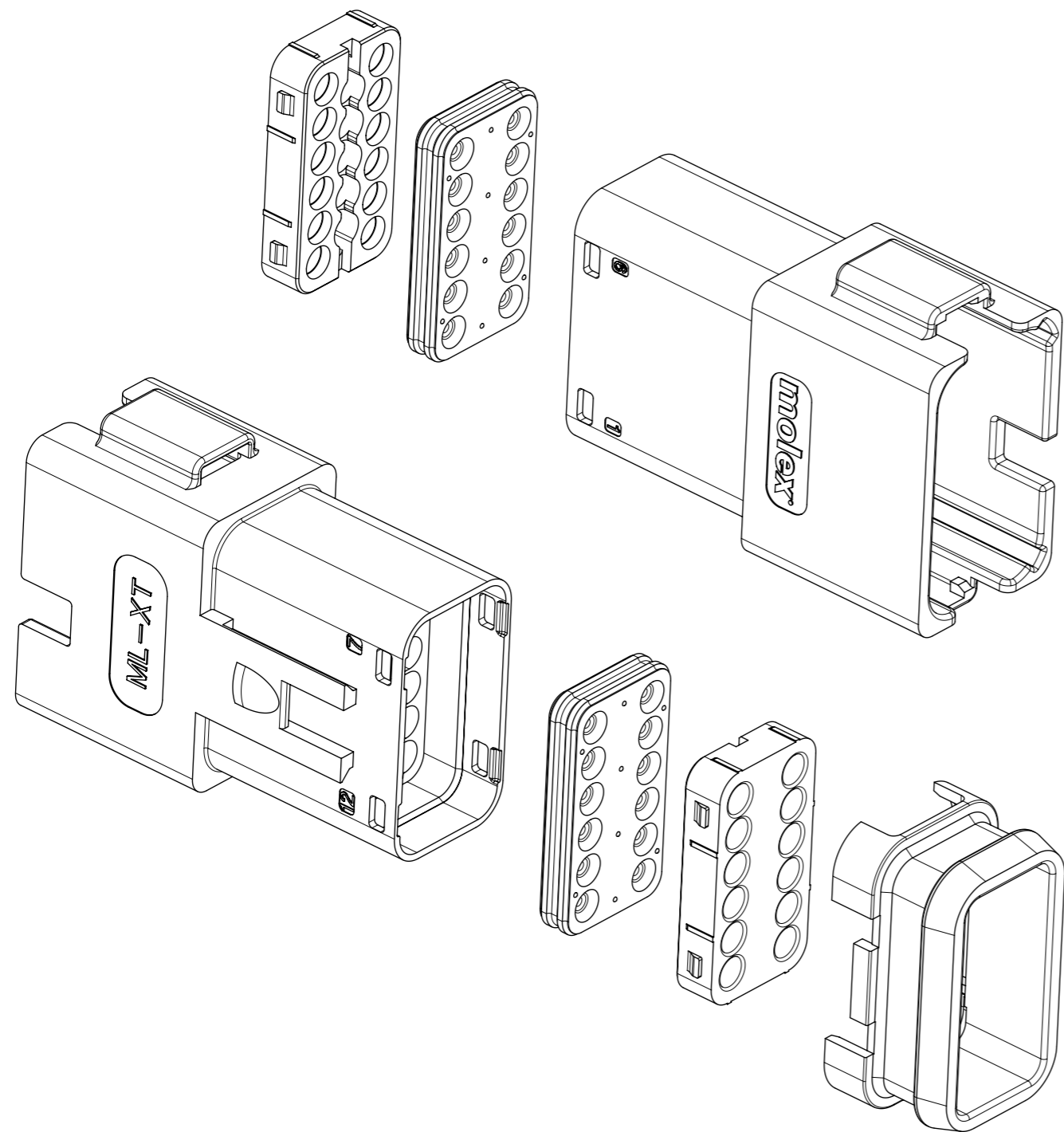
NOTES

- MATERIAL  
 HOUSING: NYLON 30% GF  
 BACK SEAL: HIGH CONSISTENCY RUBBER
- CIRCUIT IDENTIFICATION
- JACKET RANGE LARGE =  $\varnothing$ 2.23mm TO 3.68mm (SEAL COLOUR: LIGHT BLUE)  
 JACKET RANGE SMALL =  $\varnothing$ 1.20mm TO 3.05mm (SEAL COLOUR: BURNT ORANGE)
- SEE SHEET 3 FOR FINAL PART NUMBER DESIGNATION
- SEE 934430010 PS P FOR PRODUCT SPECIFICATION
- SEE 934430002 PS K FOR PACKAGING SPECIFICATION
- INSPECTION NUMBERS 1-50 RESERVED FOR SHEET 2  
 LAST INSPECTION NUMBER: 9

12CCT RECEPTACLE CONNECTOR WITH HEATSHRINK HOUSING ULTRASONICALLY WELDED IN PLACE



|         |  |   |                                 |
|---------|--|---|---------------------------------|
| SYMBOLS |  | THIS DRAWING CONTAINS INFORMATION THAT IS PROPRIETARY TO MOLEX ELECTRONIC TECHNOLOGIES, LLC AND SHOULD NOT BE USED WITHOUT WRITTEN PERMISSION |                                 |
| ▽ = 0   | mm   | SCALE   | CURRENT REV DESC: SEE LONG TEXT |
| ▽ = 0   | GENERAL TOLERANCES (UNLESS SPECIFIED)                | 1:1   |                                 |
| ▽ = 0   | ANGULAR TOL ± 2.0°                                   |   |                                 |
| ▽ = 0   | 4 PLACES ±   | EC NO: 619923   |                                 |
| ▽ = 0   | 3 PLACES ±   | DRWN: JFLETCHER   | 2019/07/01                      |
| ▽ = 0   | 2 PLACES ± 0.1                                       | CHK'D: IOCONNELL  | 2019/08/15                      |
| ▽ = 0   | 1 PLACE ± 0.2  | APPR: IOCONNELL   | 2019/08/16                      |
| ▽ = 0   | 0 PLACES ±   | INITIAL REVISION:   |                                 |
| □ = 0   | DRAFT WHERE APPLICABLE MUST REMAIN WITHIN DIMENSIONS | DRWN: JFLETCHER   | 2015/12/16                      |
| ▽ = 0   |  | APPR: JDWALLACE   | 2016/01/14                      |
|         |  | THIRD ANGLE PROJECTION  | DRAWING                         |
|         |  | A3-SIZE   | SERIES                          |
|         |  | 93443   | MATERIAL NUMBER                 |
|         |  | SEE CHART   | CUSTOMER                        |
|         |  | GENERAL MARKET  | SHEET NUMBER                    |
|         |  |   | 2 OF 9                          |



12CCT RECEPTACLE CONNECTOR

SERIES NO.

93444

CIRCUIT SIZE  
6 = 12CCT

6

ASSEMBLY OPTIONS

- 1 = RECEPTACLE ASSEMBLY FOR WIRE JACKET RANGE  $\varnothing$ 1.20mm - 3.05mm
- 2 = RECEPTACLE ASSEMBLY FOR WIRE JACKET RANGE  $\varnothing$ 2.23mm - 3.68mm
- 5 = RECEPTACLE ASSEMBLY & HEATSHRINK FOR WIRE JACKET RANGE  $\varnothing$ 1.20mm - 3.05mm
- 6 = RECEPTACLE ASSEMBLY & HEATSHRINK FOR WIRE JACKET RANGE  $\varnothing$ 2.23mm - 3.68mm

KEYING / COLOUR OPTION

- 12 = KEYING OPTION A (GREY)
- 11 = KEYING OPTION A (BLACK)
- 21 = KEYING OPTION B (BLACK)
- 33 = KEYING OPTION C (GREEN)
- 47 = KEYING OPTION D (BROWN)

EXAMPLE:

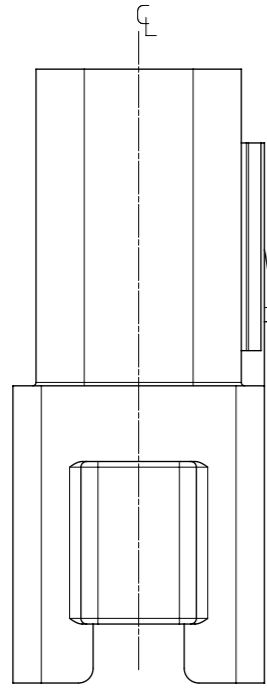
12CCT RECEPTACLE & HEATSHRINK FOR WIRE JACKET RANGE  $\varnothing$ 1.20mm-3.05mm, KEYING OPTION A (GREY): 93444-6512

NOTES

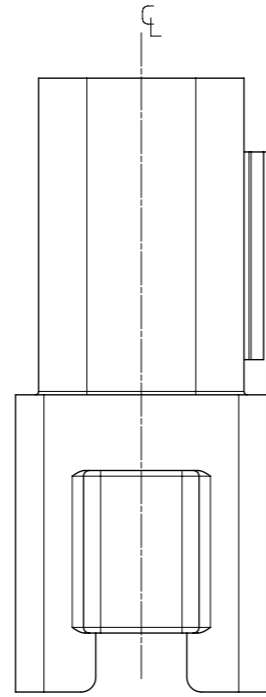
1. SEE SHEET 2 FOR UNSPECIFIED NOTES AND DIMENSIONS
2. BACK COVER COLOUR: BLACK
3. HEATSHRINK HOUSING COLOUR: BLACK

| SYMBOLS         |  | THIS DRAWING CONTAINS INFORMATION THAT IS PROPRIETARY TO MOLEX ELECTRONIC TECHNOLOGIES, LLC AND SHOULD NOT BE USED WITHOUT WRITTEN PERMISSION |                                 |
|-----------------|--|---|---------------------------------|
| DIMENSION UNITS | SCALE  | CURRENT REV DESC: SEE LONG TEXT   |                                 |
| $\nabla = 0$    | mm   | 1.5:1   | <b>molex</b>                    |
| $\nabla = 0$    | GENERAL TOLERANCES (UNLESS SPECIFIED)                |   |                                 |
| $\nabla = 0$    | ANGULAR TOL $\pm 2.0^\circ$                          |   | 12CCT ML-XT CV CONNECTOR SYSTEM |
| $\nabla = 0$    | 4 PLACES   | $\pm$   | PRODUCT CUSTOMER DRAWING        |
| $\nabla = 0$    | 3 PLACES   | $\pm$   | DOCUMENT NUMBER                 |
| $\nabla = 0$    | 2 PLACES   | $\pm 0.1$   | 934430060                       |
| $\nabla = 0$    | 1 PLACE  | $\pm 0.2$   | DOC TYPE                        |
| $\nabla = 0$    | 0 PLACES   | $\pm$   | PSD                             |
| $\square = 0$   | DRAFT WHERE APPLICABLE MUST REMAIN WITHIN DIMENSIONS |   | DOC PART                        |
| $\nabla = 0$    | THIRD ANGLE PROJECTION                               |   | 000                             |
| DRAWING         |  | SERIES  | REVISION                        |
| A3-SIZE         |  | 93443   | C3                              |
| MATERIAL NUMBER |  | CUSTOMER  | SHEET NUMBER                    |
| SEE CHART       |  | GENERAL MARKET  | 3 OF 9                          |

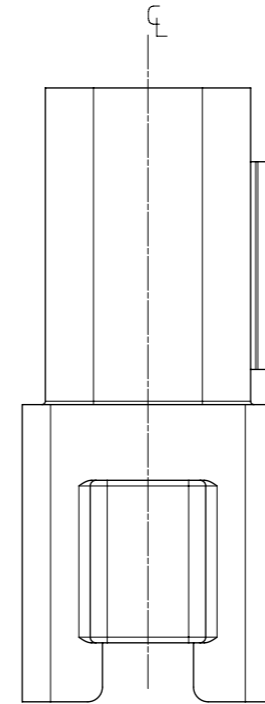
KEYING OPTION A



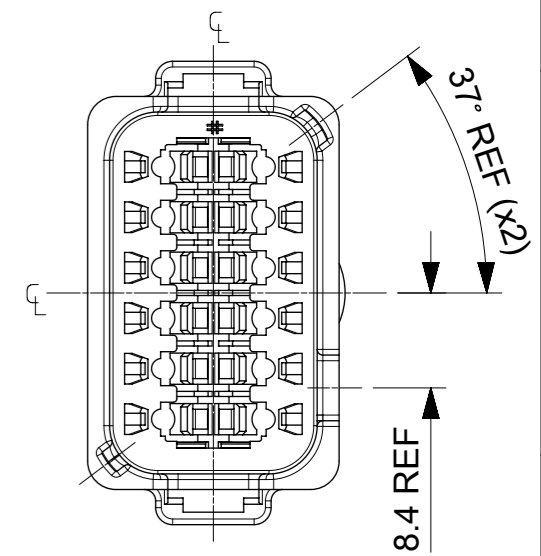
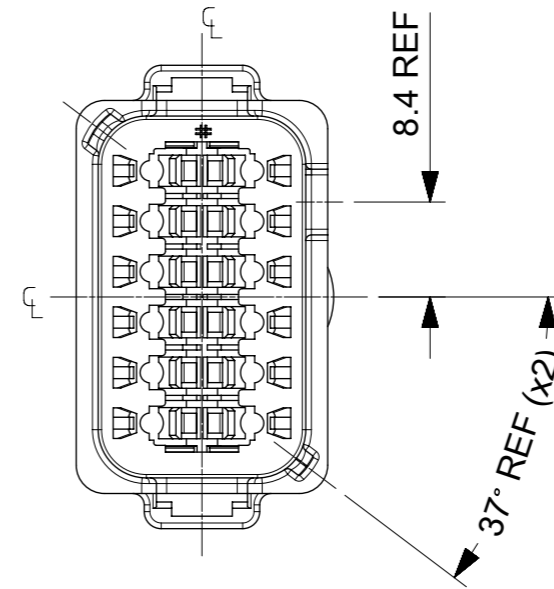
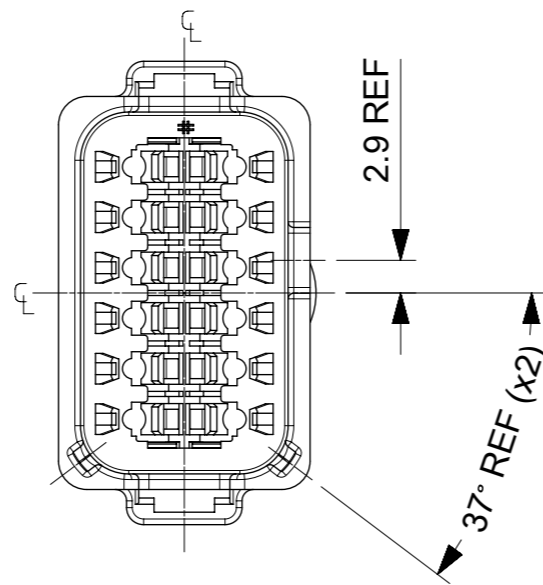
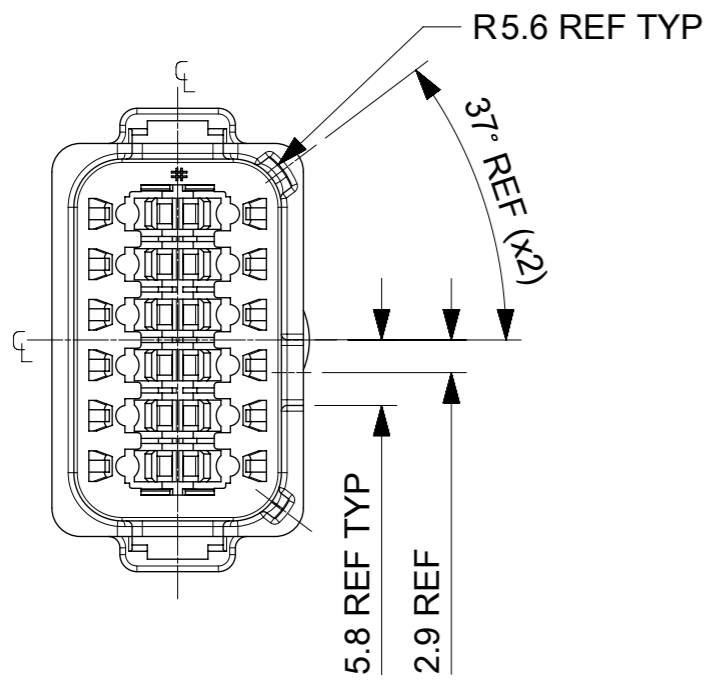
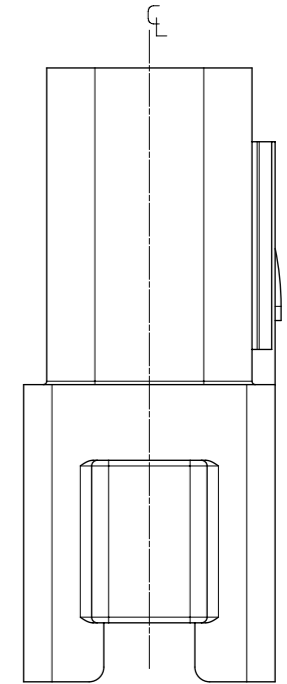
KEYING OPTION B



KEYING OPTION C

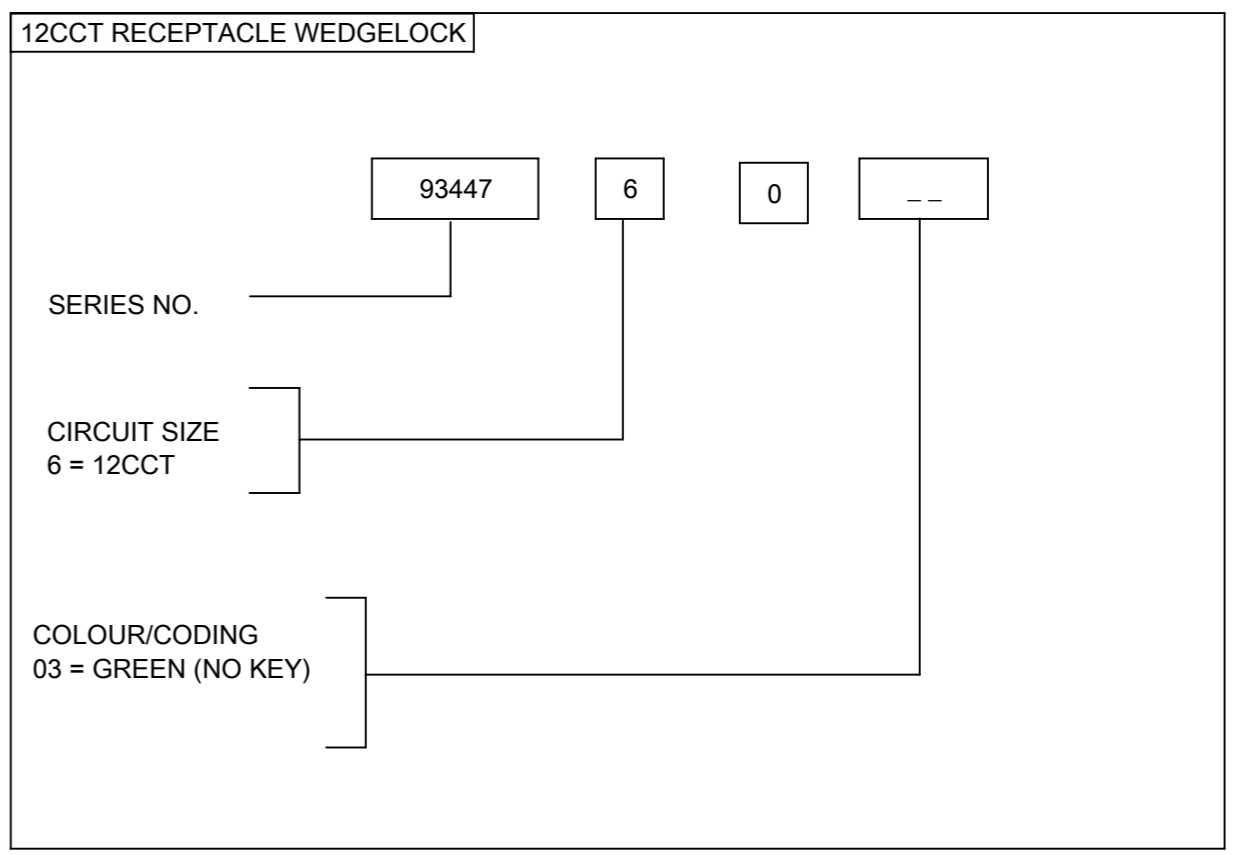
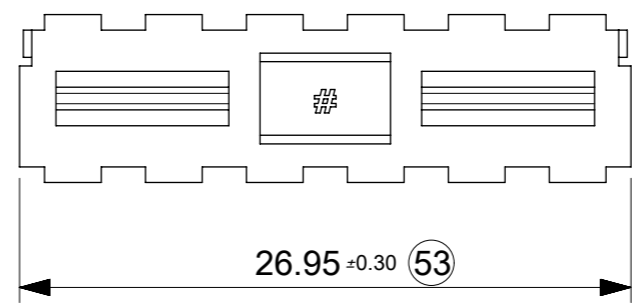
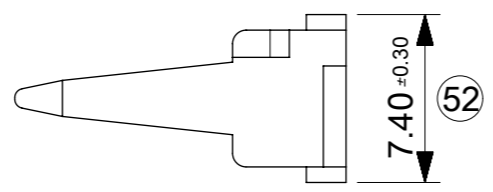
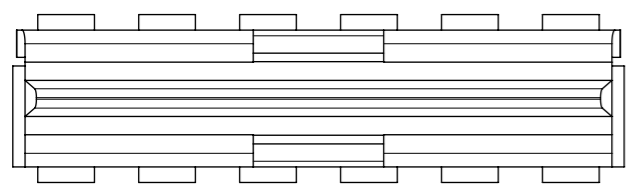
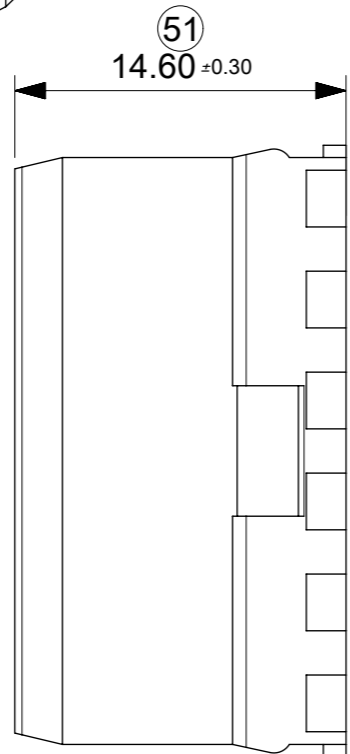
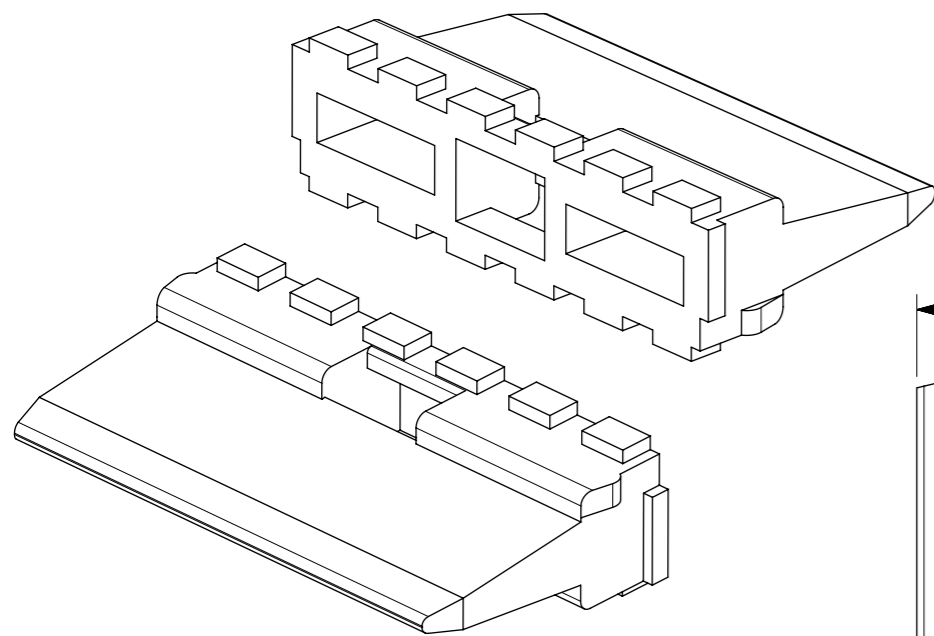


KEYING OPTION D



NOTES  
1. SEE SHEETS 2 & 3 FOR UNSPECIFIED NOTES AND DIMENSIONS

|         |   |                        |                                 |            |                                 |
|---------|---|------------------------|---------------------------------|------------|---------------------------------|
| SYMBOLS | THIS DRAWING CONTAINS INFORMATION THAT IS PROPRIETARY TO MOLEX ELECTRONIC TECHNOLOGIES, LLC AND SHOULD NOT BE USED WITHOUT WRITTEN PERMISSION |                        | CURRENT REV DESC: SEE LONG TEXT |            | <b>molex</b>                    |
|         | DIMENSION UNITS   | SCALE                  |                                 |            |                                 |
| ▽ = 0   | mm  | 1.5:1                  |                                 |            | 12CCT ML-XT CV CONNECTOR SYSTEM |
| ▽ = 0   | GENERAL TOLERANCES (UNLESS SPECIFIED)   |                        |                                 |            | PRODUCT CUSTOMER DRAWING        |
| ▽ = 0   | ANGULAR TOL ± 2.0°  |                        |                                 |            | DOCUMENT NUMBER                 |
| ▽ = 0   | 4 PLACES ±  |                        | EC NO: 619923                   | 2019/07/01 | DOC TYPE                        |
| ▽ = 0   | 3 PLACES ±  |                        | DRWN: JFLETCHER                 | 2019/08/15 | DOC PART                        |
| ▽ = 0   | 2 PLACES ± 0.1  |                        | CHK'D: IOCONNELL                | 2019/08/15 | REVISION                        |
| ▽ = 0   | 1 PLACE ± 0.2   |                        | APPR: IOCONNELL                 | 2019/08/16 |                                 |
| ▽ = 0   | 0 PLACES ±  |                        | INITIAL REVISION:               |            |                                 |
| ▽ = 0   | DRAFT WHERE APPLICABLE MUST REMAIN WITHIN DIMENSIONS  |                        | DRWN: JFLETCHER                 | 2015/12/16 | 934430060                       |
| ▽ = 0   |   |                        | APPR: JDWALLACE                 | 2016/01/14 | PSD 000 C3                      |
|         |   | THIRD ANGLE PROJECTION | DRAWING                         | SERIES     | MATERIAL NUMBER                 |
|         |   |                        | A3-SIZE                         | 93443      | CUSTOMER                        |
|         |   |                        |                                 |            | SEE CHART                       |
|         |   |                        |                                 |            | GENERAL MARKET                  |
|         |   |                        |                                 |            | SHEET NUMBER                    |
|         |   |                        |                                 |            | 4 OF 9                          |



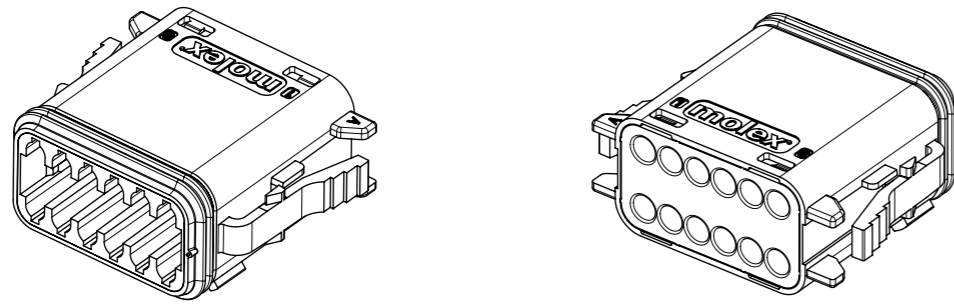
**NOTES**

1. MATERIAL:  
HOUSING: NYLON 30% GLASS FILLED

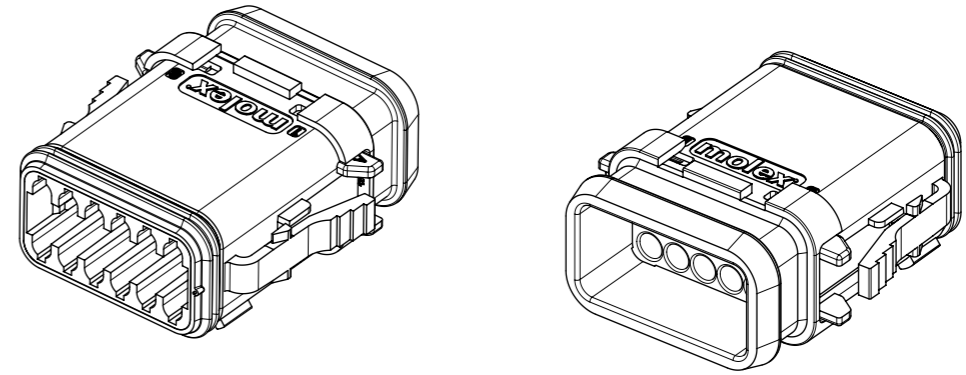
INSPECTION NUMBERS 51-100  
RESERVED FOR SHEET 5  
LAST INSPECTION NUMBER 53

|         |  |   |         |                                       |                 |                            |              |
|---------|--|---|---------|---------------------------------------|-----------------|----------------------------|--------------|
| SYMBOLS |  | THIS DRAWING CONTAINS INFORMATION THAT IS PROPRIETARY TO MOLEX ELECTRONIC TECHNOLOGIES, LLC AND SHOULD NOT BE USED WITHOUT WRITTEN PERMISSION |         | CURRENT REV DESC: SEE LONG TEXT       |                 | <b>molex</b>               |              |
| ▽ = 0   | mm   | SCALE   | 3:1     | GENERAL TOLERANCES (UNLESS SPECIFIED) |                 |                            |              |
| ▽ = 0   |  | ANGULAR TOL ± 2.0°  |         | EC NO: 619923                         |                 | PRODUCT CUSTOMER DRAWING   |              |
| ▽ = 0   | 4 PLACES ±   | DRWN: JFLETCHER 2019/07/01  |         | DRWN: JFLETCHER 2019/07/01            |                 | DOCUMENT NUMBER            |              |
| ▽ = 0   | 3 PLACES ±   | CHK'D: IOCONNELL 2019/08/15   |         | CHK'D: IOCONNELL 2019/08/15           |                 | DOC TYPE DOC PART REVISION |              |
| ▽ = 0   | 2 PLACES ± 0.1                                       | APPR: IOCONNELL 2019/08/16  |         | APPR: IOCONNELL 2019/08/16            |                 | 934430060 PSD 000 C3       |              |
| ▽ = 0   | 1 PLACE ± 0.2  | INITIAL REVISION:   |         | DRWN: JFLETCHER 2015/12/16            |                 | MATERIAL NUMBER            |              |
| ▽ = 0   | 0 PLACES ±   | DRWN: JFLETCHER 2016/01/14  |         | APPR: JDWALLACE 2016/01/14            |                 | CUSTOMER                   |              |
| ■ = 0   | DRAFT WHERE APPLICABLE MUST REMAIN WITHIN DIMENSIONS | THIRD ANGLE PROJECTION  | DRAWING | SERIES                                | MATERIAL NUMBER | CUSTOMER                   | SHEET NUMBER |
| ▽ = 0   |  | ⊕   | A3-SIZE | 93443                                 | SEE CHART       | GENERAL MARKET             | 5 OF 9       |

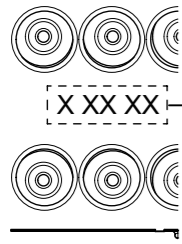
12CCT PLUG CONNECTOR



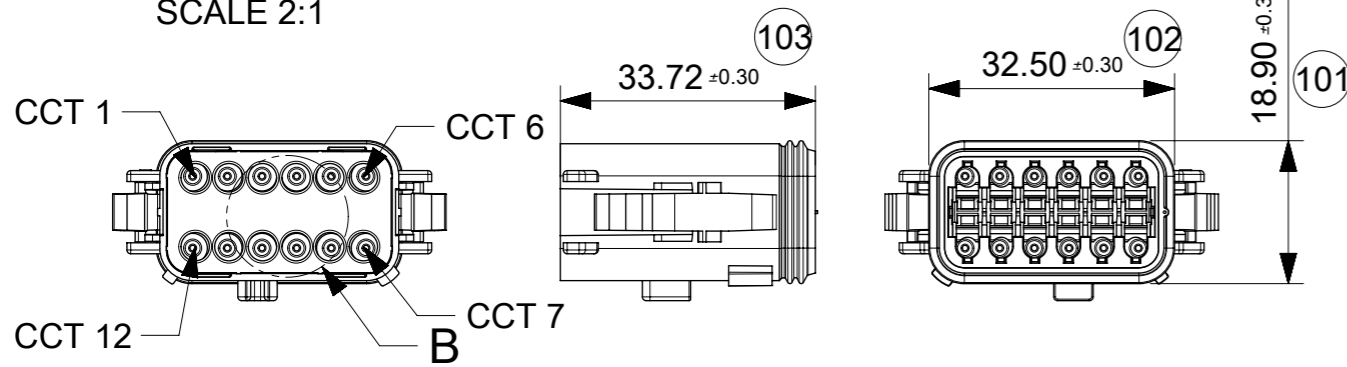
12CCT PLUG CONNECTOR WITH HEATSHRINK HOUSING ULTRASONICALLY WELDED IN PLACE



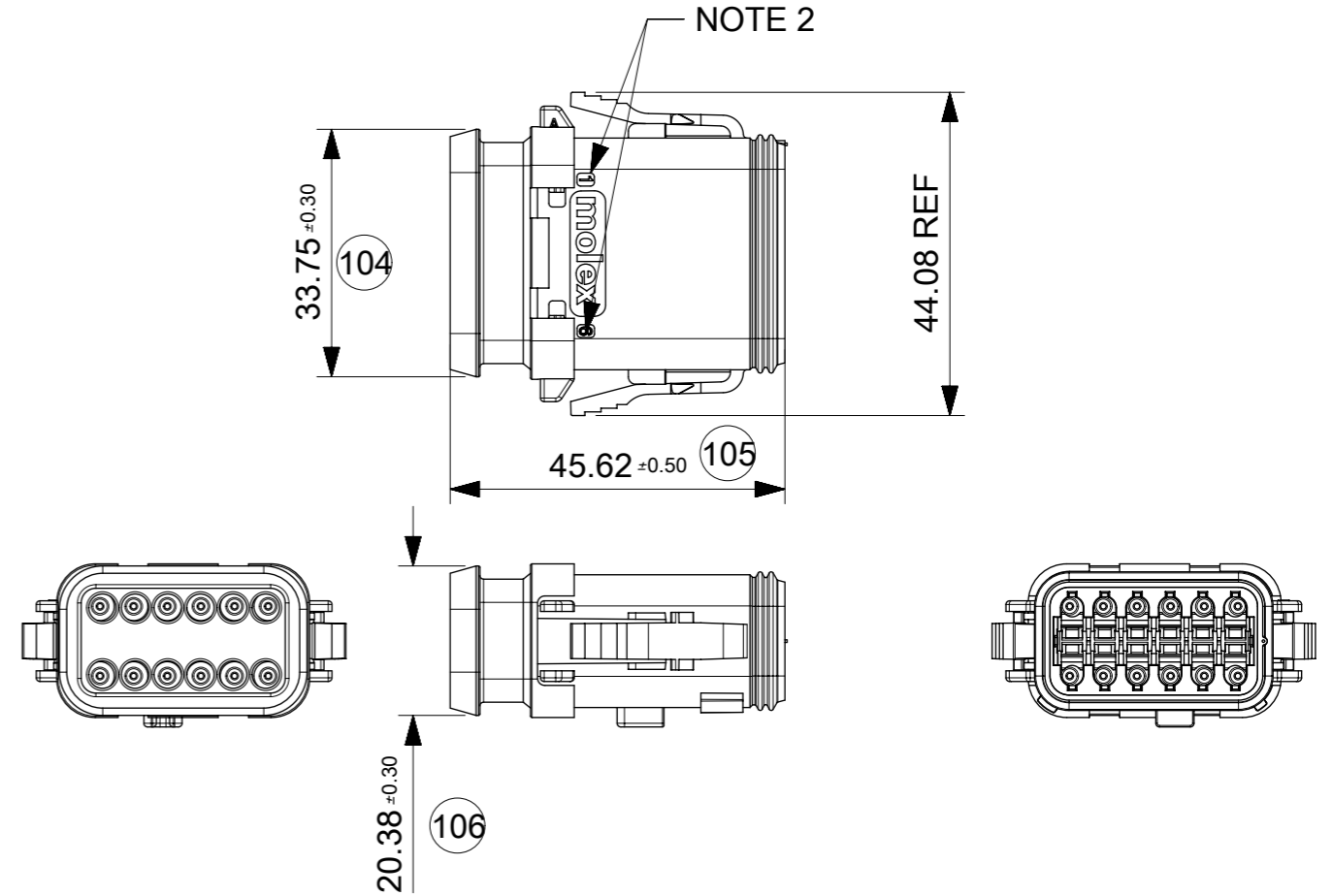
DATE CODE: X XX XX  
 X — DAY: 1-7  
 X — WEEK: 01 - 52  
 X — YEAR: 00 - 99  
 # — MACHINE NO. 1  
 EXAMPLE: 11315 = DAY 1, WEEK 13, YEAR 15  
 i.e. 23rd OF MARCH 2015



DETAIL B  
 SCALE 2:1



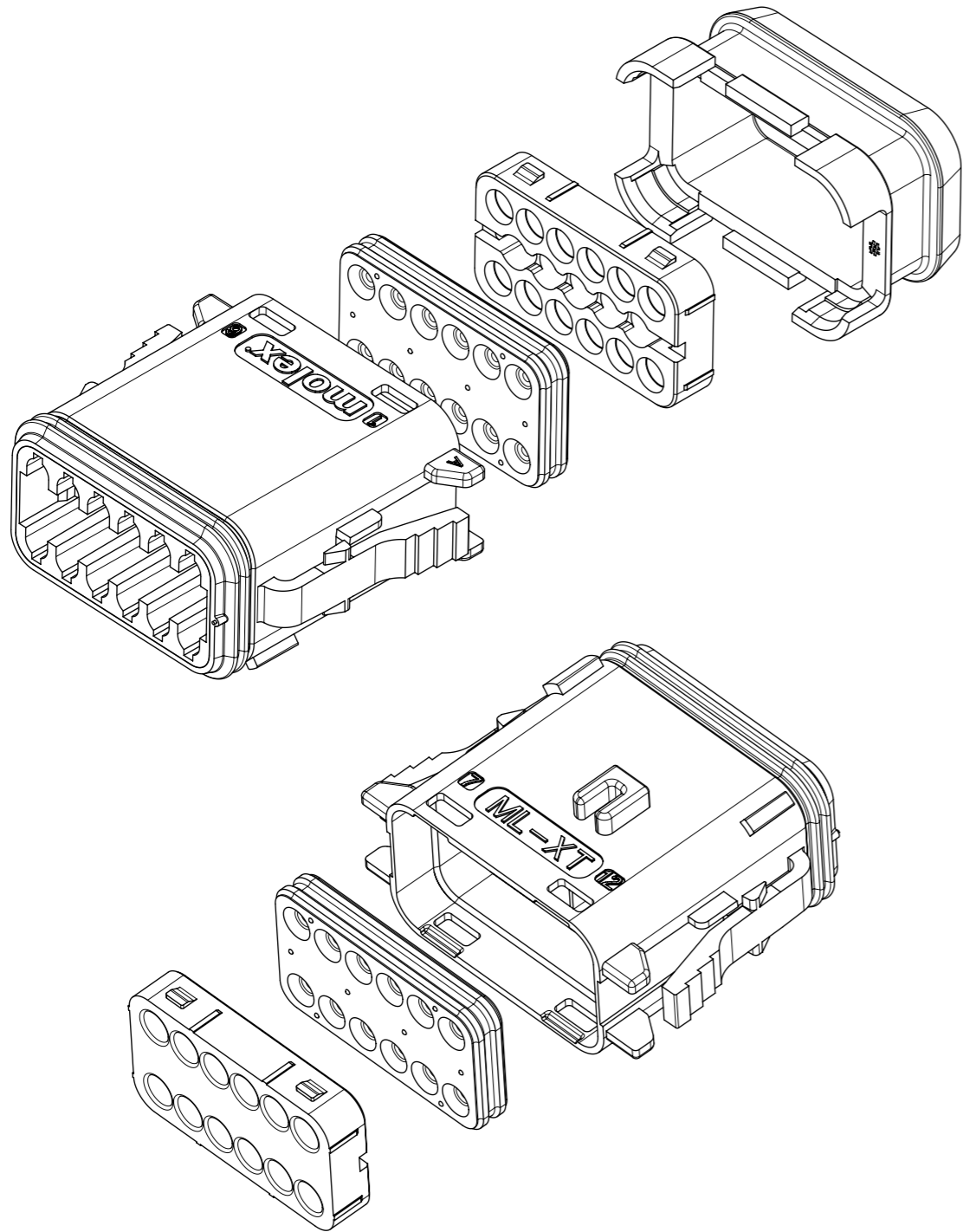
NOTE 2



NOTES

- MATERIAL  
 HOUSING: NYLON 30% GLASS FILL  
 PLUG SEAL: SILICONE  
 BACK SEAL: HIGH CONSISTENCY RUBBER
  - CIRCUIT IDENTIFICATION
  - JACKET RANGE LARGE =  $\varnothing$ 2.23mm TO 3.68mm (SEAL COLOUR: LIGHT BLUE)  
 JACKET RANGE SMALL =  $\varnothing$ 1.20mm TO 3.05mm (SEAL COLOUR: BURNT ORANGE)
  - SEE SHEET 7 FOR FINAL PART NUMBER DESIGNATION
  - SEE 934430010 PSP FOR PRODUCT SPECIFICATION
  - SEE 934430002 PS K FOR PACKAGING SPECIFICATION
- INSPECTION NUMBERS 101-150 RESERVED FOR SHEET 6  
 LAST INSPECTION NUMBER 106

|                                 |  |   |     |
|---------------------------------|--|---|-----|
| SYMBOLS                         |  | THIS DRAWING CONTAINS INFORMATION THAT IS PROPRIETARY TO MOLEX ELECTRONIC TECHNOLOGIES, LLC AND SHOULD NOT BE USED WITHOUT WRITTEN PERMISSION |     |
| $\nabla = 0$                    | mm   | SCALE   | 1:1 |
| $\nabla = 0$                    | GENERAL TOLERANCES (UNLESS SPECIFIED)                |   |     |
| $\nabla = 0$                    | ANGULAR TOL $\pm 2.0^\circ$                          |   |     |
| $\nabla = 0$                    | 4 PLACES   | $\pm$   |     |
| $\nabla = 0$                    | 3 PLACES   | $\pm$   |     |
| $\nabla = 0$                    | 2 PLACES   | $\pm 0.1$   |     |
| $\nabla = 0$                    | 1 PLACE  | $\pm 0.2$   |     |
| $\nabla = 0$                    | 0 PLACES   | $\pm$   |     |
| $\blacksquare = 0$              | DRAFT WHERE APPLICABLE MUST REMAIN WITHIN DIMENSIONS |   |     |
| $\nabla = 0$                    | THIRD ANGLE PROJECTION                               |   |     |
| CURRENT REV DESC: SEE LONG TEXT |  | molex   |     |
| EC NO: 619923                   |  | 12CCT ML-XT CV CONNECTOR SYSTEM   |     |
| DRWN: JFLETCHER 2019/07/01      |  | PRODUCT CUSTOMER DRAWING  |     |
| CHK'D: IOCONNELL 2019/08/15     |  | DOCUMENT NUMBER   |     |
| APPR: IOCONNELL 2019/08/16      |  | 934430060   |     |
| INITIAL REVISION:               |  | DOC TYPE  |     |
| DRWN: JFLETCHER 2015/12/16      |  | PSD   |     |
| APPR: JDWALLACE 2016/01/14      |  | DOC PART  |     |
| SERIES                          |  | 000   |     |
| MATERIAL NUMBER                 |  | C3  |     |
| CUSTOMER                        |  | REVISION  |     |
| GENERAL MARKET                  |  | 6 OF 9  |     |
| SHEET NUMBER                    |  |   |     |



12CCT PLUG CONNECTOR

SERIES NO.

93445

CIRCUIT SIZE  
6 = 12CCT

6

ASSEMBLY OPTIONS

- 1 = PLUG ASSEMBLY FOR WIRE JACKET RANGE  $\varnothing$ 1.20mm - 3.05mm
- 2 = PLUG ASSEMBLY FOR WIRE JACKET RANGE  $\varnothing$ 2.23mm - 3.68mm
- 5 = PLUG ASSEMBLY & HEATSHRINK FOR WIRE JACKET RANGE  $\varnothing$ 1.20mm - 3.05mm
- 6 = PLUG ASSEMBLY & HEATSHRINK FOR WIRE JACKET RANGE  $\varnothing$ 2.23mm - 3.68mm

KEYING / COLOUR OPTION

- 12 = KEYING OPTION A (GREY)
- 11 = KEYING OPTION A (BLACK)
- 21 = KEYING OPTION B (BLACK)
- 33 = KEYING OPTION C (GREEN)
- 47 = KEYING OPTION D (BROWN)
- 52 = KEYING OPTION E (GREY)

EXAMPLE:

12CCT PLUG & HEATSHRINK FOR WIRE JACKET RANGE  $\varnothing$ 1.20mm-3.05mm, KEYING OPTION A (GREY): 93445-6512

NOTES

1. SEE SHEET 6 FOR UNSPECIFIED NOTES AND DIMENSIONS
2. BACK COVER COLOUR: BLACK
3. HEATSHRINK HOUSING COLOUR: BLACK

|         |   |       |                                 |  |  |                            |  |  |
|---------|---|-------|---------------------------------|--|--|----------------------------|--|--|
| SYMBOLS | THIS DRAWING CONTAINS INFORMATION THAT IS PROPRIETARY TO MOLEX ELECTRONIC TECHNOLOGIES, LLC AND SHOULD NOT BE USED WITHOUT WRITTEN PERMISSION |       | CURRENT REV DESC: SEE LONG TEXT |  |  | <b>molex</b>               |  |  |
|         | DIMENSION UNITS   | SCALE |                                 |  |  |                            |  |  |
| ▽ = 0   | mm  | 1:1   | EC NO: 619923                   |  |  | DOCUMENT NUMBER            |  |  |
| ▽ = 0   | GENERAL TOLERANCES (UNLESS SPECIFIED)   |       | DRWN: JFLETCHER 2019/07/01      |  |  | 934430060                  |  |  |
| ▽ = 0   | ANGULAR TOL ± 2.0°  |       | CHK'D: IOCONNELL 2019/08/15     |  |  | DOC TYPE DOC PART REVISION |  |  |
| ▽ = 0   | 4 PLACES ±  |       | APPR: IOCONNELL 2019/08/16      |  |  | PSD 000 C3                 |  |  |
| ▽ = 0   | 3 PLACES ±  |       | INITIAL REVISION:               |  |  | MATERIAL NUMBER            |  |  |
| ▽ = 0   | 2 PLACES ± 0.1  |       | DRWN: JFLETCHER 2015/12/16      |  |  | CUSTOMER                   |  |  |
| ▽ = 0   | 1 PLACE ± 0.2   |       | APPR: JDWALLACE 2016/01/14      |  |  | SEE CHART                  |  |  |
| ▽ = 0   | 0 PLACES ±  |       | THIRD ANGLE PROJECTION          |  |  | GENERAL MARKET             |  |  |
| □ = 0   | DRAFT WHERE APPLICABLE MUST REMAIN WITHIN DIMENSIONS  |       | DRAWING                         |  |  | SHEET NUMBER               |  |  |
| ▽ = 0   |   |       | A3-SIZE                         |  |  | 7 OF 9                     |  |  |

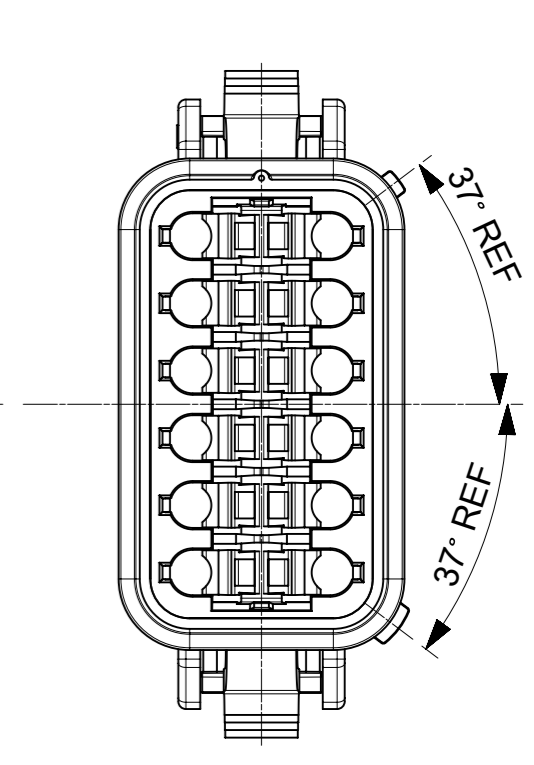
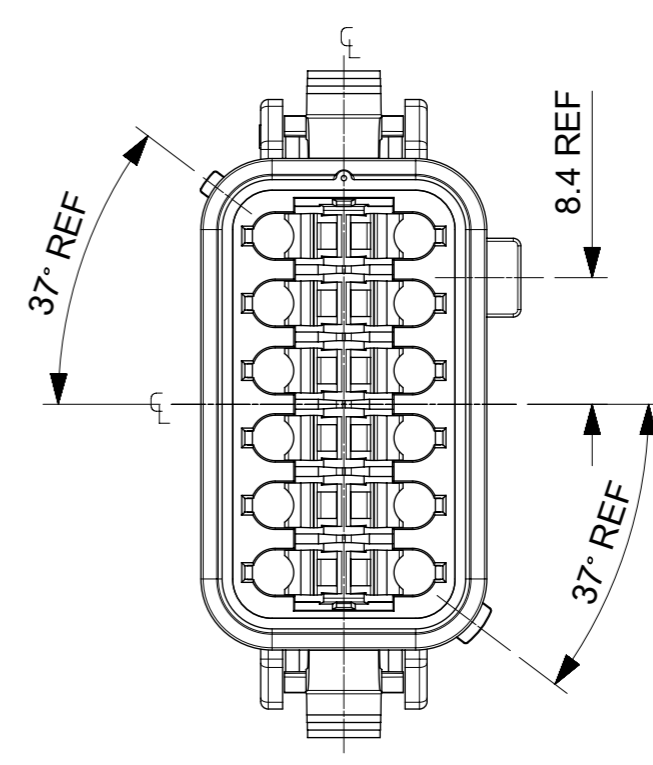
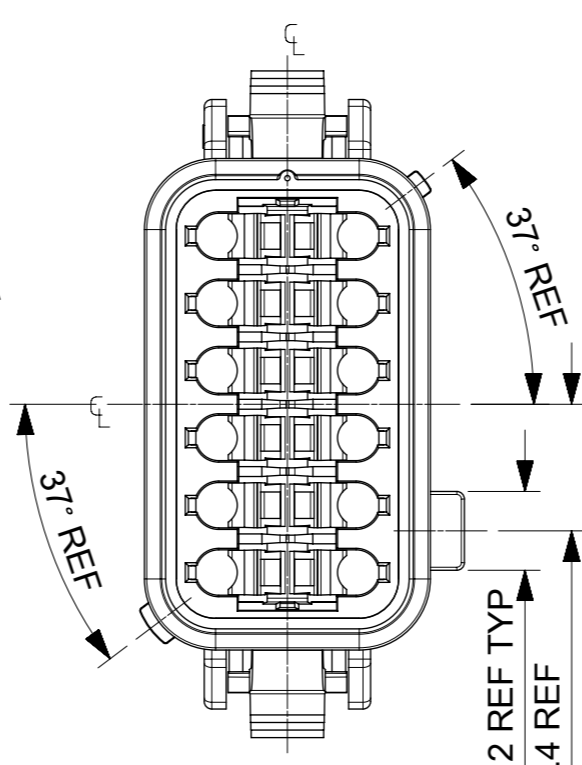
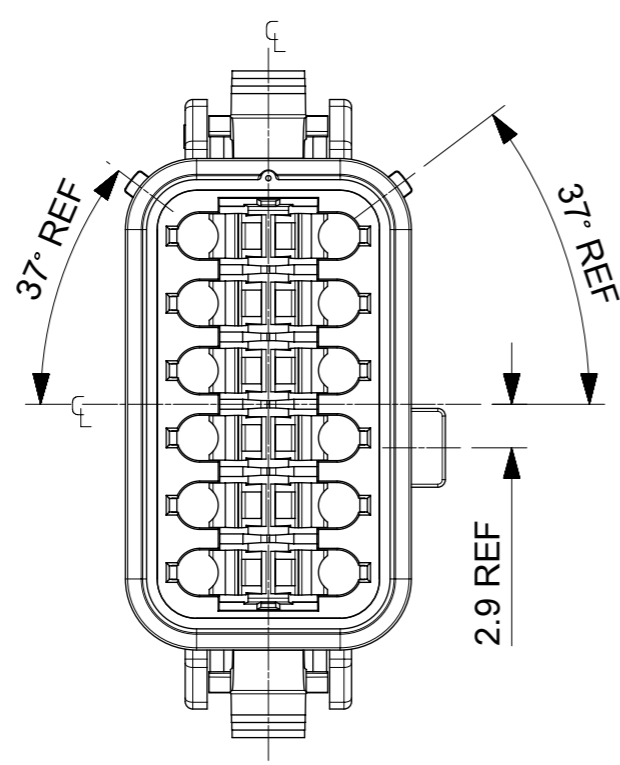
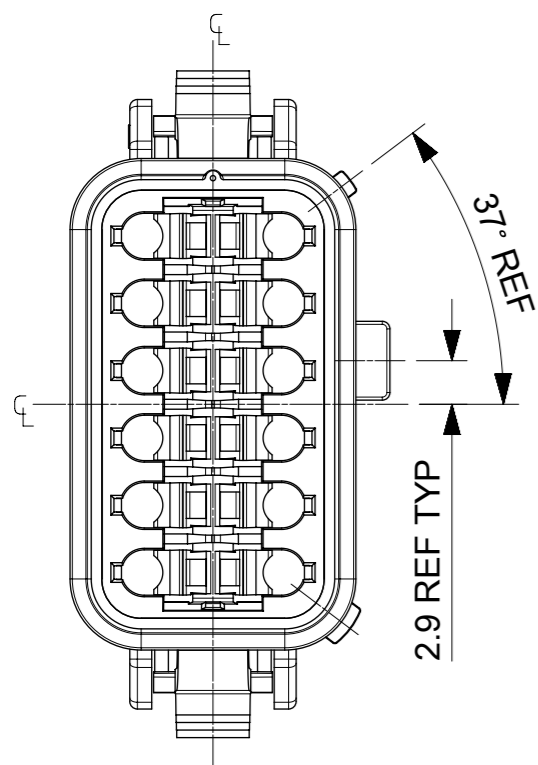
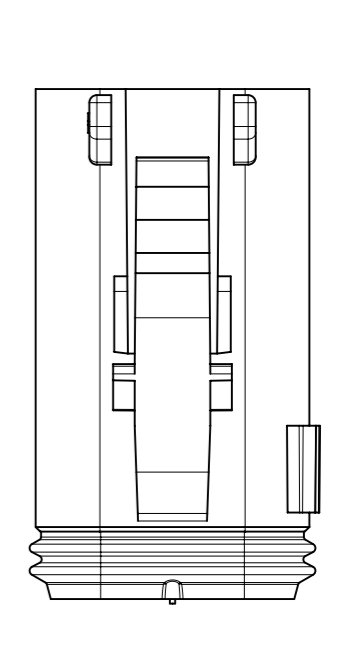
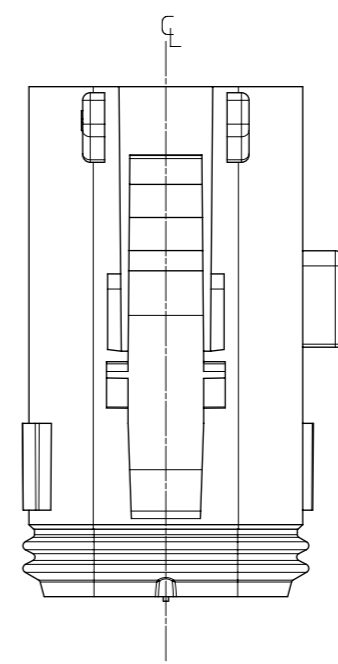
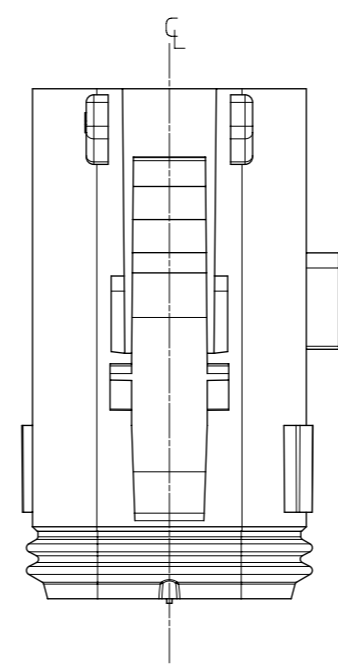
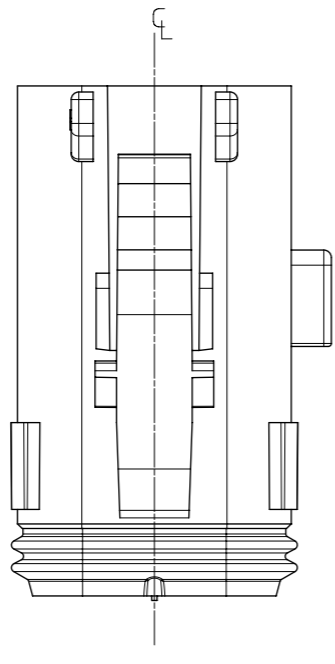
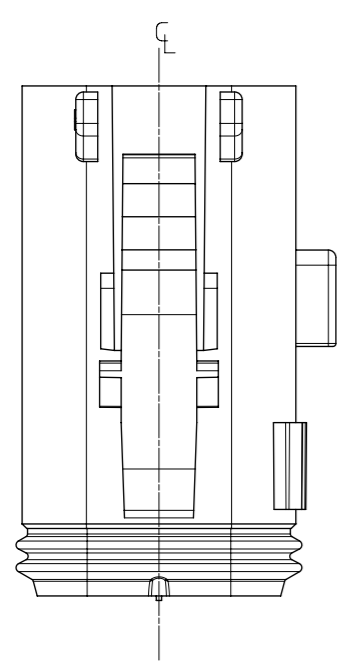
KEYING OPTION A

KEYING OPTION B

KEYING OPTION C

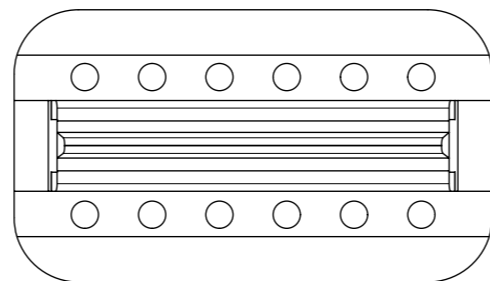
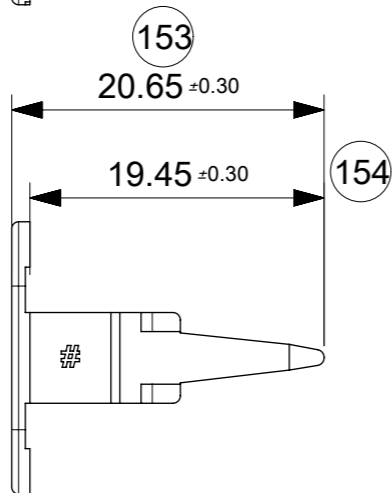
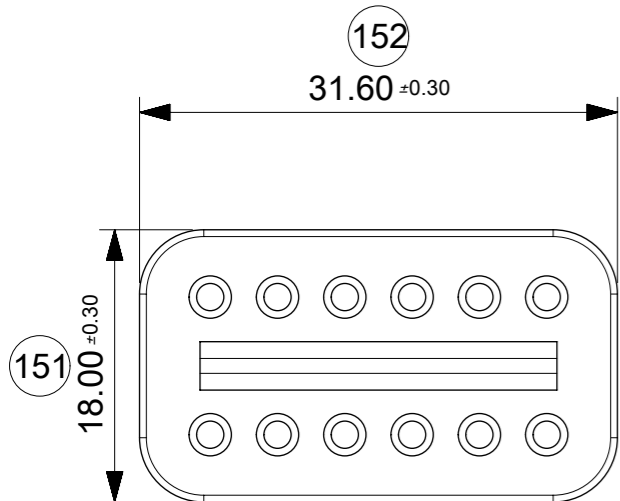
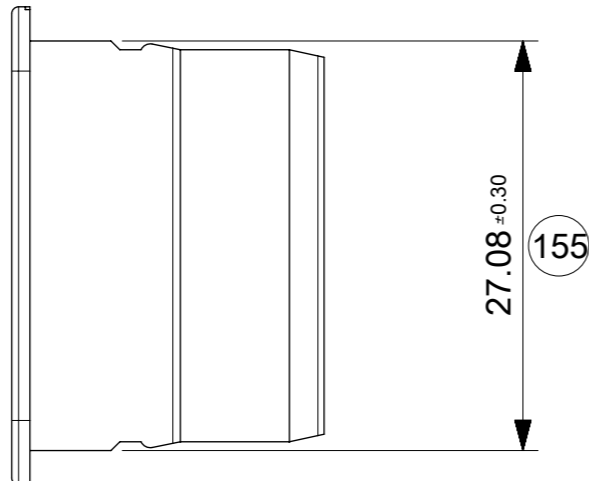
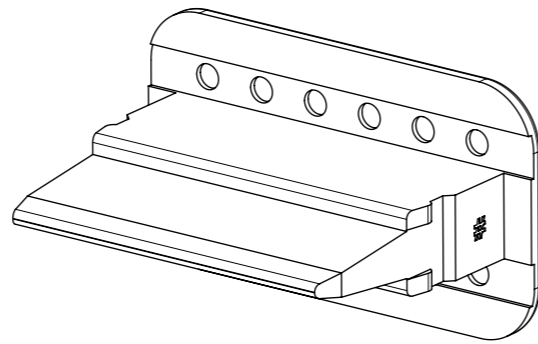
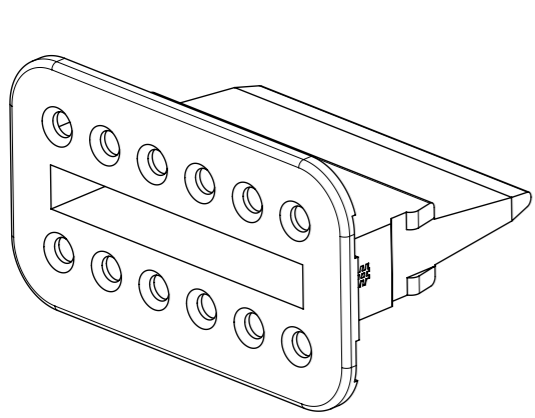
KEYING OPTION D

KEYING OPTION E

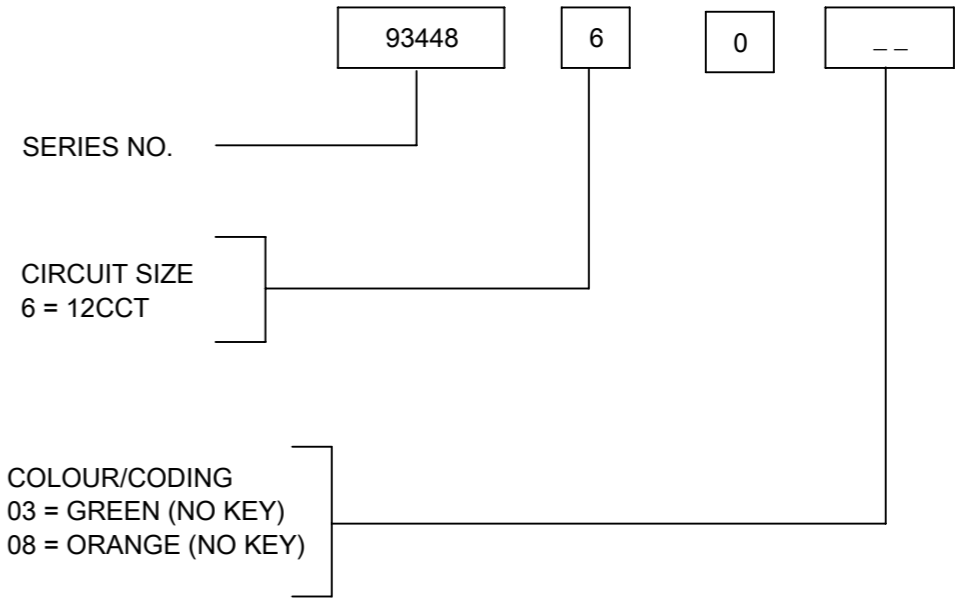


NOTES  
1. SEE SHEETS 6 & 7 FOR UNSPECIFIED NOTES AND DIMENSIONS

|  |                                       |   |                |
|--|---------------------------------------|---|----------------|
| SYMBOLS  |                                       | THIS DRAWING CONTAINS INFORMATION THAT IS PROPRIETARY TO MOLEX ELECTRONIC TECHNOLOGIES, LLC AND SHOULD NOT BE USED WITHOUT WRITTEN PERMISSION |                |
| ▽ = 0  | mm                                    | SCALE   | 2:1            |
| ▽ = 0  | GENERAL TOLERANCES (UNLESS SPECIFIED) |   |                |
| ▽ = 0  | ANGULAR TOL ± 2.0°                    |   |                |
| ▽ = 0  | 4 PLACES                              | CURRENT REV DESC: SEE LONG TEXT   |                |
| ▽ = 0  | 3 PLACES                              | EC NO: 619923   | 2019/07/01     |
| ▽ = 0  | 2 PLACES                              | DRWN: JFLETCHER   | 2019/08/15     |
| ▽ = 0  | 1 PLACE                               | CHK'D: IOCONNELL  | 2019/08/16     |
| ▽ = 0  | 0 PLACES                              | APPR: IOCONNELL   | 2019/08/16     |
| □ = 0  | INITIAL REVISION:                     |   |                |
| ■ = 0  | DRWN: JFLETCHER 2015/12/16            |   |                |
| ▽ = 0  | APPR: JDWALLACE 2016/01/14            |   |                |
| DRAFT WHERE APPLICABLE MUST REMAIN WITHIN DIMENSIONS |                                       | THIRD ANGLE PROJECTION  | DRAWING        |
|  |                                       |   | A3-SIZE        |
|  |                                       | SERIES  | 93443          |
|  |                                       | MATERIAL NUMBER   | SEE CHART      |
|  |                                       | CUSTOMER  | GENERAL MARKET |
|  |                                       | DOCUMENT NUMBER   | 934430060      |
|  |                                       | DOC TYPE  | PSD            |
|  |                                       | DOC PART  | 000            |
|  |                                       | REVISION  | C3             |
|  |                                       | SHEET NUMBER  | 8 OF 9         |



12CCT PLUG WEDGELOCK



NOTES  
 1. MATERIAL  
 HOUSING: NYLON 30% GLASS FILL

INSPECTION NUMBERS 151-200 RESERVED FOR SHEET 9  
 LAST INSPECTION NUMBER 155

|         |   |       |                                 |  |  |                                 |  |  |
|---------|---|-------|---------------------------------|--|--|---------------------------------|--|--|
| SYMBOLS | THIS DRAWING CONTAINS INFORMATION THAT IS PROPRIETARY TO MOLEX ELECTRONIC TECHNOLOGIES, LLC AND SHOULD NOT BE USED WITHOUT WRITTEN PERMISSION |       | CURRENT REV DESC: SEE LONG TEXT |  |  | <b>molex</b>                    |  |  |
|         | DIMENSION UNITS   | SCALE | EC NO: 619923                   |  |  |                                 |  |  |
| ▽ = 0   | mm  | 2:1   | DRWN: JFLETCHER 2019/07/01      |  |  | 12CCT ML-XT CV CONNECTOR SYSTEM |  |  |
| ▽ = 0   | GENERAL TOLERANCES (UNLESS SPECIFIED)   |       | CHK'D: IOCONNELL 2019/08/15     |  |  | PRODUCT CUSTOMER DRAWING        |  |  |
| ▽ = 0   | ANGULAR TOL ± 2.0°  |       | APPR: IOCONNELL 2019/08/16      |  |  | DOCUMENT NUMBER                 |  |  |
| ▽ = 0   | 4 PLACES  | ±     | INITIAL REVISION:               |  |  | 934430060                       |  |  |
| ▽ = 0   | 3 PLACES  | ±     | DRWN: JFLETCHER 2015/12/16      |  |  | DOC TYPE DOC PART REVISION      |  |  |
| ▽ = 0   | 2 PLACES  | ± 0.1 | APPR: JDWALLACE 2016/01/14      |  |  | PSD 000 C3                      |  |  |
| ▽ = 0   | 1 PLACE   | ± 0.2 | THIRD ANGLE PROJECTION          |  |  | MATERIAL NUMBER CUSTOMER        |  |  |
| ▽ = 0   | 0 PLACES  | ±     | DRAWING                         |  |  | SEE CHART GENERAL MARKET        |  |  |
| ▽ = 0   | DRAFT WHERE APPLICABLE MUST REMAIN WITHIN DIMENSIONS  |       | SERIES                          |  |  | SHEET NUMBER                    |  |  |
| ▽ = 0   |   |       | A3-SIZE 93443                   |  |  | 9 OF 9                          |  |  |



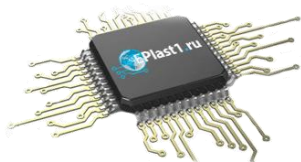
Компания «ЭлектроПласт» предлагает заключение долгосрочных отношений при поставках импортных электронных компонентов на взаимовыгодных условиях!

Наши преимущества:

- Оперативные поставки широкого спектра электронных компонентов отечественного и импортного производства напрямую от производителей и с крупнейших мировых складов;
- Поставка более 17-ти миллионов наименований электронных компонентов;
- Поставка сложных, дефицитных, либо снятых с производства позиций;
- Оперативные сроки поставки под заказ (от 5 рабочих дней);
- Экспресс доставка в любую точку России;
- Техническая поддержка проекта, помощь в подборе аналогов, поставка прототипов;
- Система менеджмента качества сертифицирована по Международному стандарту ISO 9001;
- Лицензия ФСБ на осуществление работ с использованием сведений, составляющих государственную тайну;
- Поставка специализированных компонентов (Xilinx, Altera, Analog Devices, Intersil, Interpoint, Microsemi, Aeroflex, Peregrine, Syfer, Eurofarad, Texas Instrument, Miteq, Cobham, E2V, MA-COM, Hittite, Mini-Circuits, General Dynamics и др.);

Помимо этого, одним из направлений компании «ЭлектроПласт» является направление «Источники питания». Мы предлагаем Вам помощь Конструкторского отдела:

- Подбор оптимального решения, техническое обоснование при выборе компонента;
- Подбор аналогов;
- Консультации по применению компонента;
- Поставка образцов и прототипов;
- Техническая поддержка проекта;
- Защита от снятия компонента с производства.



#### Как с нами связаться

**Телефон:** 8 (812) 309 58 32 (многоканальный)

**Факс:** 8 (812) 320-02-42

**Электронная почта:** [org@eplast1.ru](mailto:org@eplast1.ru)

**Адрес:** 198099, г. Санкт-Петербург, ул. Калинина, дом 2, корпус 4, литера А.