

### FEATURES

**Precision power supply monitoring**  
**31 reset threshold options: 1.58 V to 5.0 V**  
**Four reset timeouts: 1 ms, 20 ms, 140 ms, and 1120 ms**  
**Manual reset input**  
**Reset output stage**  
**Push-pull active-low**  
**Guaranteed reset output valid to  $V_{CC} = 1\text{ V}$**   
**Power supply glitch immunity**  
**Specified over the  $-40^{\circ}\text{C}$  to  $+125^{\circ}\text{C}$  temperature range**  
**4-lead SC70 package**

### APPLICATIONS

**Microprocessor systems**  
**Computers**  
**Controllers**  
**Intelligent instruments**  
**Portable equipment**

### GENERAL DESCRIPTION

The ADM6384 is a supervisory circuit that monitors power supply voltage levels in microprocessor-based systems. A power-on reset signal is generated when the supply voltage rises to a preset threshold level. The debounced manual reset input of the ADM6384 can be used to initiate a reset by means of an external push button or logic signal.

The part is available in a choice of 31 reset threshold options, from 1.58 V to 5.0 V. The minimum reset timeout periods are 1 ms, 20 ms, 140 ms, and 1120 ms.

The ADM6384 is available in a 4-lead SC70 package and typically consumes only  $7\ \mu\text{A}$ , making it suitable for use in low power, portable applications.

### FUNCTIONAL BLOCK DIAGRAMS



Figure 1.

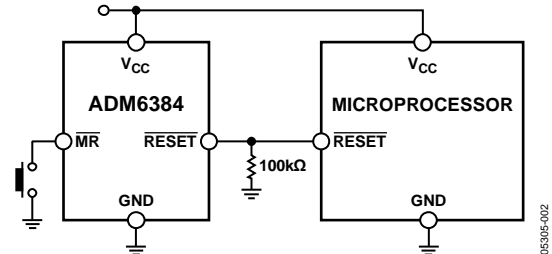


Figure 2.

### Rev. C

Information furnished by Analog Devices is believed to be accurate and reliable. However, no responsibility is assumed by Analog Devices for its use, nor for any infringements of patents or other rights of third parties that may result from its use. Specifications subject to change without notice. No license is granted by implication or otherwise under any patent or patent rights of Analog Devices. Trademarks and registered trademarks are the property of their respective owners.

## TABLE OF CONTENTS

|  |   |   |    |
|--|---|---|----|
| Features .....                                   | 1 | Typical Performance Characteristics .....           | 7  |
| Applications.....                                | 1 | Circuit Description.....                            | 9  |
| General Description .....                        | 1 | Reset Output .....                                  | 9  |
| Functional Block Diagrams.....                   | 1 | Manual Reset Input .....                            | 9  |
| Revision History .....                           | 2 | Applications Information .....                      | 10 |
| Specifications.....                              | 3 | Negative-Going $V_{CC}$ Transients .....            | 10 |
| Absolute Maximum Ratings.....                    | 5 | Ensuring Reset Valid to $V_{CC} = 0\text{ V}$ ..... | 10 |
| ESD Caution.....                                 | 5 | Outline Dimensions .....                            | 11 |
| Pin Configuration and Function Descriptions..... | 6 | Ordering Guide .....                                | 11 |

## REVISION HISTORY

### 4/11—Rev. B to Rev. C

|                                  |    |
|----------------------------------|----|
| Updated Outline Dimensions ..... | 11 |
| Changes to Ordering Guide .....  | 11 |

### 7/08—Rev. A to Rev. B

|  |    |
|--|----|
| Changes to Figure 5, Figure 8, and Figure 9..... | 7  |
| Changes to Figure 10.....                        | 8  |
| Changes to Figure 15.....                        | 11 |
| Changes to Ordering Guide .....                  | 11 |

### 1/07—Rev. 0 to Rev. A

|                                      |           |
|--------------------------------------|-----------|
| Updated Format.....                  | Universal |
| Changes to Specifications Table..... | 3         |
| Updated Outline Dimensions .....     | 11        |
| Changes to Ordering Guide .....      | 11        |

### 7/05—Revision 0: Initial Version

## SPECIFICATIONS

$V_{CC}$  = full operating range,  $T_A$  =  $-40^{\circ}\text{C}$  to  $+125^{\circ}\text{C}$ , unless otherwise noted.

Table 1.

| Parameter                               | Min  | Typ               | Max  | Unit                    | Test Conditions/Comments   |
|---|------|-------------------|------|-------------------------|--|
| SUPPLY                                  |      |                   |      |                         |  |
| $V_{CC}$ Operating Voltage Range        | 1    |                   | 5.5  | V                       |  |
| Supply Current                          |      | 7                 | 13   | $\mu\text{A}$           | $V_{CC} = 5.5\text{ V}$ , no load  |
|   |      | 6                 | 11   | $\mu\text{A}$           | $V_{CC} = 3.6\text{ V}$ , no load  |
|   |      | 4                 | 7    | $\mu\text{A}$           | $V_{CC} = 2.5\text{ V}$ , no load <sup>1</sup>   |
|   |      | 3                 | 6    | $\mu\text{A}$           | $V_{CC} = 1.8\text{ V}$ , no load <sup>1</sup>   |
| RESET THRESHOLD VOLTAGE                 |      |                   |      |                         |  |
| ADM6384x50x                             | 4.88 | 5.00              | 5.12 | V                       |  |
| ADM6384x49x                             | 4.78 | 4.90              | 5.02 | V                       |  |
| ADM6384x48x                             | 4.68 | 4.80              | 4.92 | V                       |  |
| ADM6384x47x                             | 4.58 | 4.70              | 4.82 | V                       |  |
| ADM6384x46x                             | 4.51 | 4.63              | 4.74 | V                       |  |
| ADM6384x45x                             | 4.39 | 4.5               | 4.61 | V                       |  |
| ADM6384x44x                             | 4.27 | 4.38              | 4.48 | V                       |  |
| ADM6384x43x                             | 4.19 | 4.30              | 4.41 | V                       |  |
| ADM6384x42x                             | 4.1  | 4.2               | 4.31 | V                       |  |
| ADM6384x41x                             | 4.0  | 4.1               | 4.2  | V                       |  |
| ADM6384x40x                             | 3.9  | 4.0               | 4.1  | V                       |  |
| ADM6384x39x                             | 3.8  | 3.9               | 4.0  | V                       |  |
| ADM6384x38x                             | 3.71 | 3.8               | 3.9  | V                       |  |
| ADM6384x37x                             | 3.61 | 3.7               | 3.79 | V                       |  |
| ADM6384x36x                             | 3.51 | 3.6               | 3.69 | V                       |  |
| ADM6384x35x                             | 3.41 | 3.5               | 3.59 | V                       |  |
| ADM6384x34x                             | 3.32 | 3.4               | 3.49 | V                       |  |
| ADM6384x33x                             | 3.22 | 3.3               | 3.38 | V                       |  |
| ADM6384x32x                             | 3.12 | 3.2               | 3.28 | V                       |  |
| ADM6384x31x                             | 3.00 | 3.08              | 3.15 | V                       |  |
| ADM6384x30x                             | 2.93 | 3.0               | 3.08 | V                       |  |
| ADM6384x29x                             | 2.85 | 2.93              | 3.00 | V                       |  |
| ADM6384x28x                             | 2.73 | 2.8               | 2.87 | V                       |  |
| ADM6384x27x                             | 2.63 | 2.70              | 2.77 | V                       |  |
| ADM6384x26x                             | 2.56 | 2.63              | 2.69 | V                       |  |
| ADM6384x25x                             | 2.44 | 2.5               | 2.56 | V                       |  |
| ADM6384x24x                             | 2.34 | 2.4               | 2.46 | V                       |  |
| ADM6384x23x                             | 2.26 | 2.31              | 2.37 | V                       |  |
| ADM6384x22x                             | 2.13 | 2.19              | 2.24 | V                       |  |
| ADM6384x17x                             | 1.62 | 1.67              | 1.71 | V                       |  |
| ADM6384x16x                             | 1.54 | 1.58              | 1.61 | V                       |  |
| RESET THRESHOLD TEMPERATURE COEFFICIENT |      |                   |      |                         |  |
| $V_{CC}$ to Reset Delay                 |      | 60                |      | ppm/ $^{\circ}\text{C}$ |  |
|   |      | 35                |      | $\mu\text{s}$           | $V_{CC}$ falling at 10 mV/ $\mu\text{s}$ from $V_{TH} + 100\text{ mV}$ to $V_{TH} - 100\text{ mV}$ |
| RESET THRESHOLD HYSTERESIS              |      |                   |      |                         |  |
|   |      | $2 \times V_{TH}$ |      | mV                      |  |
| RESET TIMEOUT PERIOD                    |      |                   |      |                         |  |
| ADM6384xxD1                             | 1    |                   | 2    | ms                      |  |
| ADM6384xxD2                             | 20   |                   | 40   | ms                      |  |
| ADM6384xxD3                             | 140  |                   | 280  | ms                      |  |
| ADM6384xxD4                             | 1120 |                   | 2240 | ms                      |  |

# ADM6384

| Parameter                                 | Min                        | Typ | Max                        | Unit          | Test Conditions/Comments  |
|---|----------------------------|-----|----------------------------|---------------|---|
| <b>MANUAL RESET INPUT</b>                 |                            |     |                            |               |   |
| $\overline{\text{MR}}$ Input Threshold    |                            |     |                            |               |   |
| $V_{\text{IL}}$                           |                            |     | $0.3 \times V_{\text{CC}}$ | V             | $V_{\text{CC}} < 4\text{ V}$  |
|   |                            |     | 0.8                        | V             | $V_{\text{CC}} > 4\text{ V}$  |
| $V_{\text{IH}}$                           | $0.7 \times V_{\text{CC}}$ |     |                            | V             | $V_{\text{CC}} < 4\text{ V}$  |
|   | 2.4                        |     |                            | V             | $V_{\text{CC}} > 4\text{ V}$  |
| $\overline{\text{MR}}$ Input Pulse Width  | 1                          |     |                            | $\mu\text{s}$ |   |
| $\overline{\text{MR}}$ Glitch Rejection   |                            | 100 |                            | ns            |   |
| $\overline{\text{MR}}$ Pull-Up Resistance | 32                         | 63  | 100                        | kV            |   |
| $\overline{\text{MR}}$ to Reset Delay     |                            | 200 |                            | ns            |   |
| <b>RESET OUTPUT VOLTAGE</b>               |                            |     |                            |               |   |
| $V_{\text{OL}}$                           |                            |     | 0.3                        | V             | $V_{\text{CC}} \geq 1.0\text{ V}, I_{\text{SINK}} = 80\ \mu\text{A}$    |
|   |                            |     | 0.3                        | V             | $V_{\text{CC}} \geq 2.5\text{ V}, I_{\text{SINK}} = 1.2\text{ mA}$      |
|   |                            |     | 0.4                        | V             | $V_{\text{CC}} \geq 4.5\text{ V}, I_{\text{SINK}} = 3.2\text{ mA}$      |
| $V_{\text{OH}}$                           | $0.8 \times V_{\text{CC}}$ |     |                            | V             | $V_{\text{CC}} \geq 2.5\text{ V}, I_{\text{SOURCE}} = 500\ \mu\text{A}$ |
|   | $0.8 \times V_{\text{CC}}$ |     |                            | V             | $V_{\text{CC}} \geq 4.5\text{ V}, I_{\text{SOURCE}} = 800\ \mu\text{A}$ |

<sup>1</sup>  $T_{\text{A}} = 25^{\circ}\text{C}$  only.

## ABSOLUTE MAXIMUM RATINGS

$T_A = 25^\circ\text{C}$ , unless otherwise noted.

**Table 2.**

| Parameter                                    | Rating          |
|--|-----------------|
| $V_{CC}$                                     | -0.3 V to +6 V  |
| $\overline{\text{RESET}}$                    | -0.3 V to +6 V  |
| Output Current ( $\overline{\text{RESET}}$ ) | 20 mA           |
| Operating Temperature Range                  | -40°C to +125°C |
| Storage Temperature Range                    | -65°C to +150°C |
| $\theta_{JA}$ Thermal Impedance, SC70        | 331°C/W         |
| Soldering Temperature                        |                 |
| Sn/Pb  | 240°C, 30 sec   |
| Pb-Free                                      | 260°C, 40 sec   |

Stresses above those listed under Absolute Maximum Ratings may cause permanent damage to the device. This is a stress rating only; functional operation of the device at these or any other conditions above those indicated in the operational section of this specification is not implied. Exposure to absolute maximum rating conditions for extended periods may affect device reliability.

### ESD CAUTION



**ESD (electrostatic discharge) sensitive device.**

Charged devices and circuit boards can discharge without detection. Although this product features patented or proprietary protection circuitry, damage may occur on devices subjected to high energy ESD. Therefore, proper ESD precautions should be taken to avoid performance degradation or loss of functionality.

# ADM6384

## PIN CONFIGURATION AND FUNCTION DESCRIPTIONS



Figure 3. Pin Configuration

Table 3. Pin Function Descriptions

| Pin No. | Mnemonic                  | Description   |
|---------|---------------------------|---|
| 1       | GND                       | Ground.   |
| 2       | $\overline{\text{RESET}}$ | Active-Low Reset Output. This is an active-low output that is asserted whenever $V_{CC}$ is below the reset threshold ( $V_{TH}$ ). It features a push-pull output stage. |
| 3       | $\overline{\text{MR}}$    | Manual Reset Input. This is an active-low input that, when forced low for at least 1 $\mu\text{s}$ , generates a reset. It features a 52 kV internal pull-up.             |
| 4       | $V_{CC}$                  | Power Supply Voltage Being Monitored.   |

# TYPICAL PERFORMANCE CHARACTERISTICS



Figure 4. Supply Current vs. Temperature

05305-004



Figure 7. Normalized Reset Threshold vs. Temperature

05305-007



Figure 5. Normalized Reset Timeout Period vs. Temperature

05305-005



Figure 8. Output Voltage Low vs. I<sub>SINK</sub>

05305-006



Figure 6. V<sub>CC</sub> to Reset Output Delay vs. Temperature

05305-006



Figure 9. Output Voltage High vs. I<sub>SOURCE</sub>

05305-008

# ADM6384



Figure 10. Maximum  $V_{CC}$  Transient Duration vs. Reset Threshold Overdrive



Figure 11. Manual Reset Minimum Pulse Width vs. Temperature



## CIRCUIT DESCRIPTION

The ADM6384 provides microprocessor supply voltage supervision by controlling the microprocessor reset input. Code execution errors are avoided during power-up, power-down, and brownout conditions by asserting a reset signal when the supply voltage is below a preset threshold. In addition, the ADM6384 allows supply voltage stabilization with a fixed timeout before the reset deasserts after the supply voltage rises above the threshold. If the user detects a problem with the system operation, a manual reset input is available to reset the microprocessor by means of an external push-button, for example.

### RESET OUTPUT

The ADM6384 features an active-low, push-pull reset output. The reset signal is guaranteed to be logic low for  $V_{CC}$  down to 1 V.

The reset output is asserted when  $V_{CC}$  is below the reset threshold ( $V_{TH}$ ) or when  $\overline{MR}$  is driven low. Reset remains asserted for the duration of the reset active timeout period ( $t_{RP}$ ) after  $V_{CC}$  rises above the reset threshold or after  $\overline{MR}$  transitions from low to high. Figure 12 illustrates the behavior of the reset outputs.



Figure 12. Reset Timing Diagram

### MANUAL RESET INPUT

The ADM6384 features a manual reset input ( $\overline{MR}$ ) that, when driven low, asserts the reset output. When  $\overline{MR}$  transitions from low to high, reset remains asserted for the duration of the reset active timeout period before deasserting. The  $\overline{MR}$  input has a 52 k $\Omega$  internal pull-up so that the input is always high when unconnected. An external push-button switch can be connected between  $\overline{MR}$  and ground so that the user can generate a reset. Debounce circuitry for this purpose is integrated on-chip. Noise immunity is provided on the  $\overline{MR}$  input, and fast, negative-going transients of up to 100 ns (typical) are ignored. A 0.1  $\mu$ F capacitor between  $\overline{MR}$  and ground provides additional noise immunity.

## APPLICATIONS INFORMATION

### NEGATIVE-GOING $V_{CC}$ TRANSIENTS

To avoid unnecessary resets caused by fast power supply transients, the ADM6384 is equipped with glitch rejection circuitry. The typical performance characteristic shown in Figure 10 plots  $V_{CC}$  transient duration vs. the transient magnitude. The curves show combinations of transient magnitude and duration for which a reset is not generated for 4.63 V and 2.93 V reset threshold parts. For example, with the 2.93 V threshold, a transient that goes 100 mV below the threshold and lasts 8  $\mu$ s typically does not cause a reset, but if the transient is any greater in magnitude or duration, a reset is generated. An optional 0.1  $\mu$ F bypass capacitor mounted close to  $V_{CC}$  provides additional glitch rejection.

### ENSURING RESET VALID TO $V_{CC} = 0$ V

Both active-low and active-high reset outputs are guaranteed to be valid for  $V_{CC}$  as low as 1 V. However, by using an external resistor with push-pull configured reset outputs, valid outputs for  $V_{CC}$  as low as 0 V are possible. For an active-low reset output, a resistor connected between  $\overline{\text{RESET}}$  and ground pulls the output low when it is unable to sink current. A large resistance such as 100 k $\Omega$  should be used to avoid overloading the reset output when  $V_{CC}$  is above 1 V.



Figure 13. Ensuring Reset Valid to  $V_{CC} = 0$  V

# OUTLINE DIMENSIONS



\*PACKAGE OUTLINE CORRESPONDS IN FULL TO EIAJ SC82 EXCEPT FOR WIDTH OF PIN 2 AS SHOWN.

Figure 14. 4-Lead Thin Shrink Small Outline Transistor Package [SC70] (KS-4)

Dimensions shown in millimeters

072809-A

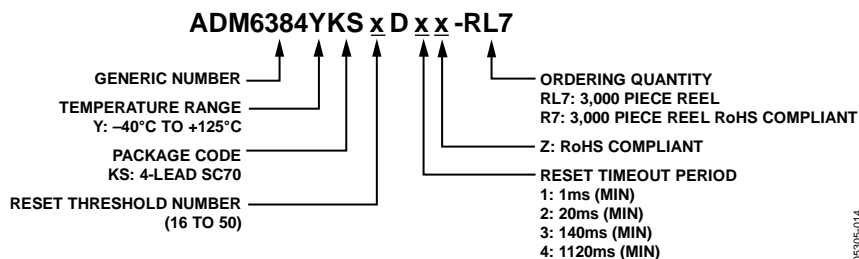


Figure 15. Ordering Code Structure

063006-014

## ORDERING GUIDE

| Standard Models <sup>1,2</sup> | Reset Threshold (V) | Reset Timeout (ms) | Temperature Range | Quantity | Package Description | Package Option | Branding |
|--------------------------------|---------------------|--------------------|-------------------|----------|---------------------|----------------|----------|
| ADM6384YKS23D3Z-R7             | 2.31                | 140                | -40°C to +125°C   | 3k       | 4-Lead SC70         | KS-4           | NOR      |
| ADM6384YKS26D3Z-R7             | 2.63                | 140                | -40°C to +125°C   | 3k       | 4-Lead SC70         | KS-4           | NOR      |
| ADM6384YKS29D1Z-R7             | 2.93                | 1                  | -40°C to +125°C   | 3k       | 4-Lead SC70         | KS-4           | NOR      |
| ADM6384YKS29D3Z-R7             | 2.93                | 140                | -40°C to +125°C   | 3k       | 4-Lead SC70         | KS-4           | NOR      |
| ADM6384YKS31D1Z-R7             | 3.08                | 1                  | -40°C to +125°C   | 3k       | 4-Lead SC70         | KS-4           | NOR      |
| ADM6384YKS31D2Z-R7             | 3.08                | 20                 | -40°C to +125°C   | 3k       | 4-Lead SC70         | KS-4           | NOR      |
| ADM6384YKS34D2Z-R7             | 3.4                 | 20                 | -40°C to +125°C   | 3k       | 4-Lead SC70         | KS-4           | NOR      |
| ADM6384YKS39D2Z-R7             | 3.9                 | 20                 | -40°C to +125°C   | 3k       | 4-Lead SC70         | KS-4           | NOR      |
| ADM6384YKS45D3Z-R7             | 4.5                 | 140                | -40°C to +125°C   | 3k       | 4-Lead SC70         | KS-4           | NOR      |
| ADM6384YKS46D2Z-R7             | 4.63                | 20                 | -40°C to +125°C   | 3k       | 4-Lead SC70         | KS-4           | NOR      |

<sup>1</sup> If ordering nonstandard models, complete the ordering code shown in Figure 15 by inserting reset timeout and reset threshold suffixes. Contact sales for availability of nonstandard models.

<sup>2</sup> Z = RoHS Compliant Part.

**NOTES**



Компания «ЭлектроПласт» предлагает заключение долгосрочных отношений при поставках импортных электронных компонентов на взаимовыгодных условиях!

Наши преимущества:

- Оперативные поставки широкого спектра электронных компонентов отечественного и импортного производства напрямую от производителей и с крупнейших мировых складов;
- Поставка более 17-ти миллионов наименований электронных компонентов;
- Поставка сложных, дефицитных, либо снятых с производства позиций;
- Оперативные сроки поставки под заказ (от 5 рабочих дней);
- Экспресс доставка в любую точку России;
- Техническая поддержка проекта, помощь в подборе аналогов, поставка прототипов;
- Система менеджмента качества сертифицирована по Международному стандарту ISO 9001;
- Лицензия ФСБ на осуществление работ с использованием сведений, составляющих государственную тайну;
- Поставка специализированных компонентов (Xilinx, Altera, Analog Devices, Intersil, Interpoint, Microsemi, Aeroflex, Peregrine, Syfer, Eurofarad, Texas Instrument, Miteq, Cobham, E2V, MA-COM, Hittite, Mini-Circuits, General Dynamics и др.);

Помимо этого, одним из направлений компании «ЭлектроПласт» является направление «Источники питания». Мы предлагаем Вам помощь Конструкторского отдела:

- Подбор оптимального решения, техническое обоснование при выборе компонента;
- Подбор аналогов;
- Консультации по применению компонента;
- Поставка образцов и прототипов;
- Техническая поддержка проекта;
- Защита от снятия компонента с производства.



#### Как с нами связаться

**Телефон:** 8 (812) 309 58 32 (многоканальный)

**Факс:** 8 (812) 320-02-42

**Электронная почта:** [org@eplast1.ru](mailto:org@eplast1.ru)

**Адрес:** 198099, г. Санкт-Петербург, ул. Калинина, дом 2, корпус 4, литера А.