

Surge protection device - DT-TELE-RJ45 - 2882925

Please be informed that the data shown in this PDF Document is generated from our Online Catalog. Please find the complete data in the user's documentation. Our General Terms of Use for Downloads are valid (<http://download.phoenixcontact.com>)



Attachment plug with surge protection for analog and digital telecommunications interfaces (up to 46 Mbps). Connection: RJ45 (RJ12/RJ11) and screw terminal block (COMBICON). Can alternatively be snapped onto DIN rails.

Why buy this product

- For analog and digital (DSL) telecommunications interface
- Connection: RJ45 socket and/or plug-in screw terminal blocks
- The adapter included enables conversion from RJ45 to RJ11 and RJ12
- DIN rail mounting possible by removing the cover cap
- International use thanks to multiple assignment



Key commercial data

Packing unit	0
Minimum order quantity	1
Catalog page	Page 159 (TT-2011)
GTIN	 4 046356 155137
Custom tariff number	85369010
Country of origin	GERMANY

Technical data

General

Housing material	Zinc die-cast
Color	silver/black
Standards for air and creepage distances	IEC 60664-1
Standards for air and creepage distances	VDE 0110-1
Total surge current (8/20) μ s	10 kA
Ambient temperature (operation)	-40 °C ... 85 °C
Mounting type	Connection-specific attachment plug and DIN rail, 35 mm
Design	Attachment plug for DIN rail mounting
Number of positions	4
Degree of protection	IP20
Direction of action	Line-Line & Line-Ground/Shield

Surge protection device - DT-TELE-RJ45 - 2882925

Technical data

General

Width	25 mm
Height	103 mm
Depth	63 mm

Protective circuit

IEC category	B2
IEC category	C1
IEC category	C2
IEC category	C3
IEC category	D1
VDE requirement class	B2
VDE requirement class	C1
VDE requirement class	C2
VDE requirement class	C3
VDE requirement class	D1
Maximum continuous operating voltage UC	185 V DC
Maximum continuous operating voltage UC	130 V AC
Maximum continuous voltage UC (wire-wire)	185 V DC
Maximum continuous voltage UC (wire-wire)	130 V AC
Nominal current I _N	≤ 380 mA (25°C)
Operating effective current I _C at UC	≤ 6 μA
Ground conductor current I _{PE}	≤ 4 μA
Nominal discharge surge current I _n (8/20) μs (Core-Core)	≤ 5 kA
Nominal discharge surge current I _n (8/20) μs (Core-Earth)	≤ 5 kA
Total surge current (8/20) μs	10 kA
Nominal pulse current I _{an} (10/1000) μs (Core-Core)	100 A
Nominal pulse current I _{an} (10/1000) μs (Core-Earth)	100 A
Nominal pulse current I _{an} (10/700) μs (Core-Core)	150 A
Nominal pulse current I _{an} (10/700) μs (Core-Earth)	150 A
Output voltage limitation at 1 kV/μs (Core-Core) static	≤ 250 V
Output voltage limitation at 1 kV/μs (Core-Earth) static	≤ 250 V
Residual voltage at I _n , (conductor-conductor)	≤ 120 V
Residual voltage at I _n , (conductor-ground)	≤ 120 V
Protection level UP (Core-Core)	≤ 250 V (B2 - 100 A)
Protection level UP (Core-Core)	≤ 250 V (C1 - 500 A)
Protection level UP (Core-Core)	≤ 250 V (C2 - 5 kA)
Protection level UP (Core-Earth)	≤ 250 V (B2 - 100 A)
Protection level UP (Core-Earth)	≤ 250 V (C1 - 500 A)
Protection level UP (Core-Earth)	≤ 250 V (C2 - 5 kA)
Response time t _A (Core-Core)	≤ 100 ns
Response time t _A (Core-Earth)	≤ 100 ns
Input attenuation a _E , sym.	Typ. 0.5 dB (≤ 5 MHz)
Input attenuation a _E , sym.	Typ. 0.3 dB (≤ 8 MHz / 150 Ω)

Surge protection device - DT-TELE-RJ45 - 2882925

Technical data

Protective circuit

Input attenuation aE, sym.	Typ. 0.3 dB (≤ 2.5 MHz / 600 Ω)
Cut-off frequency f_g (3 dB), sym. in 100 Ohm system	Typ. 50 MHz
Resistance in series	3.3 Ω 10 %
Surge carrying capacity in acc. with IEC 61643-21 (Core-Core)	C1 (1 kV / 500 A)
Surge carrying capacity in acc. with IEC 61643-21 (Core-Core)	C2 (10 kV/5 kA)
Surge carrying capacity in acc. with IEC 61643-21 (Core-Core)	B2 (4 kV / 100 A)
Surge carrying capacity in acc. with IEC 61643-21 (Core-Earth)	B2 (4 kV / 100 A)
Surge carrying capacity in acc. with IEC 61643-21 (Core-Earth)	C1 (1 kV / 500 A)
Surge carrying capacity in acc. with IEC 61643-21 (Core-Earth)	C2 (10 kV/5 kA)
Surge carrying capacity in acc. with IEC 61643-21 (Core-Earth)	D1 (1 kA)

Connection data

Connection method	RJ45 / Combicon
Connection type IN	RJ45 female connector
Connection type IN	MC 1,5/4
Connection type OUT	RJ45 female connector
Connection type OUT	MC 1,5/4

Connection, equipotential bonding

Connection method	Cable connection/DIN rail
-------------------	---------------------------

Connection, protective circuit

Standards/regulations	IEC 61643-21
-----------------------	--------------

Classifications

eclass

eCl@ss 4.0	27140201
eCl@ss 4.1	27130801
eCl@ss 5.0	27130801
eCl@ss 5.1	27130801
eCl@ss 6.0	27130807
eCl@ss 7.0	27130807

etim

ETIM 2.0	EC000943
ETIM 3.0	EC000943
ETIM 4.0	EC000943

unspsc

UNSPSC 6.01	30212010
UNSPSC 7.0901	39121610
UNSPSC 11	39121610
UNSPSC 12.01	39121610
UNSPSC 13.2	39121620

Surge protection device - DT-TELE-RJ45 - 2882925

Approvals

Approvals

Approvals

GOST / GOST

Ex Approvals

Approvals submitted

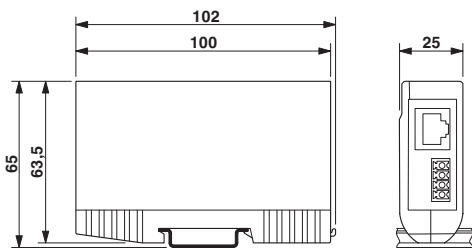
Approval details

GOST

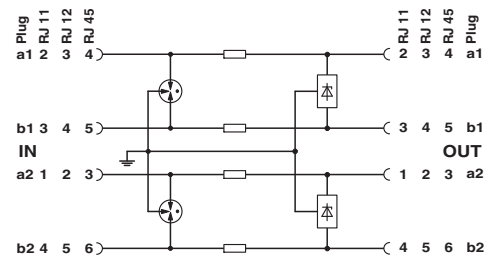
GOST

Drawings

Dimensioned drawing



Circuit diagram





Компания «ЭлектроПласт» предлагает заключение долгосрочных отношений при поставках импортных электронных компонентов на взаимовыгодных условиях!

Наши преимущества:

- Оперативные поставки широкого спектра электронных компонентов отечественного и импортного производства напрямую от производителей и с крупнейших мировых складов;
- Поставка более 17-ти миллионов наименований электронных компонентов;
- Поставка сложных, дефицитных, либо снятых с производства позиций;
- Оперативные сроки поставки под заказ (от 5 рабочих дней);
- Экспресс доставка в любую точку России;
- Техническая поддержка проекта, помощь в подборе аналогов, поставка прототипов;
- Система менеджмента качества сертифицирована по Международному стандарту ISO 9001;
- Лицензия ФСБ на осуществление работ с использованием сведений, составляющих государственную тайну;
- Поставка специализированных компонентов (Xilinx, Altera, Analog Devices, Intersil, Interpoint, Microsemi, Aeroflex, Peregrine, Syfer, Eurofarad, Texas Instrument, Miteq, Cobham, E2V, MA-COM, Hittite, Mini-Circuits, General Dynamics и др.);

Помимо этого, одним из направлений компании «ЭлектроПласт» является направление «Источники питания». Мы предлагаем Вам помощь Конструкторского отдела:

- Подбор оптимального решения, техническое обоснование при выборе компонента;
- Подбор аналогов;
- Консультации по применению компонента;
- Поставка образцов и прототипов;
- Техническая поддержка проекта;
- Защита от снятия компонента с производства.



Как с нами связаться

Телефон: 8 (812) 309 58 32 (многоканальный)

Факс: 8 (812) 320-02-42

Электронная почта: org@eplast1.ru

Адрес: 198099, г. Санкт-Петербург, ул. Калинина, дом 2, корпус 4, литера А.