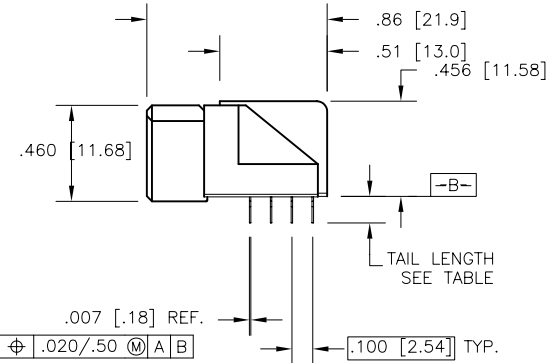
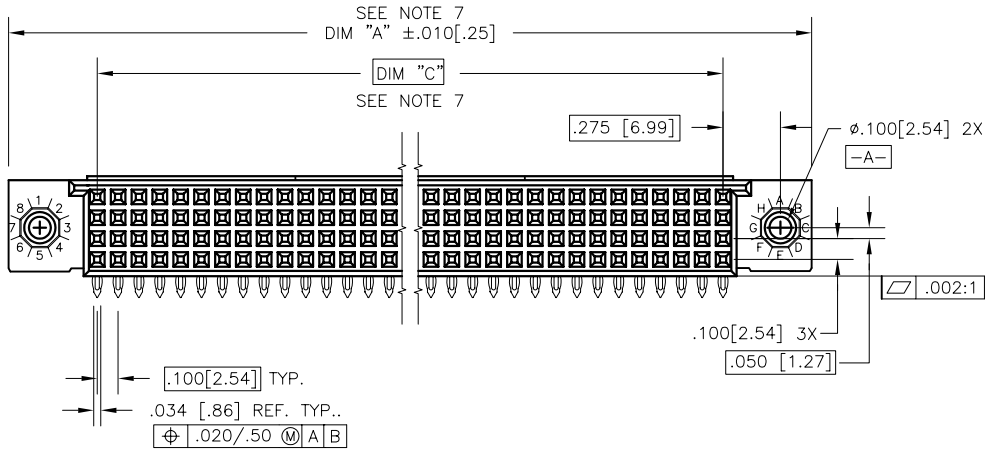
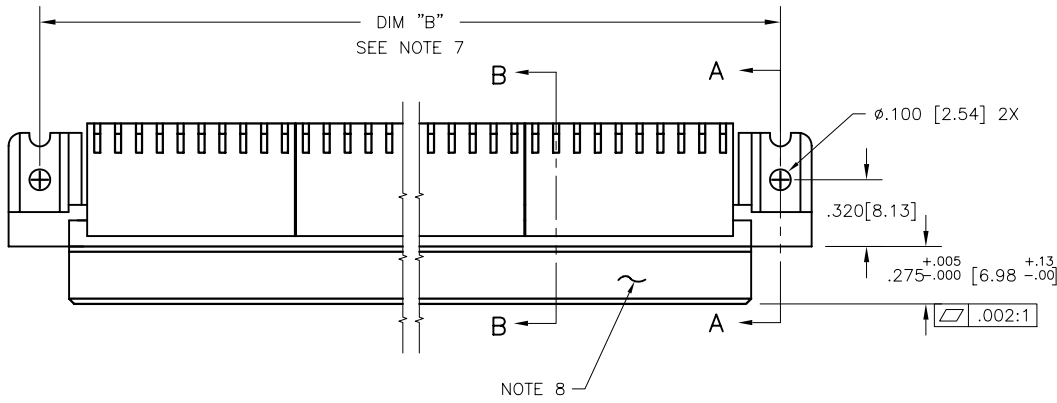


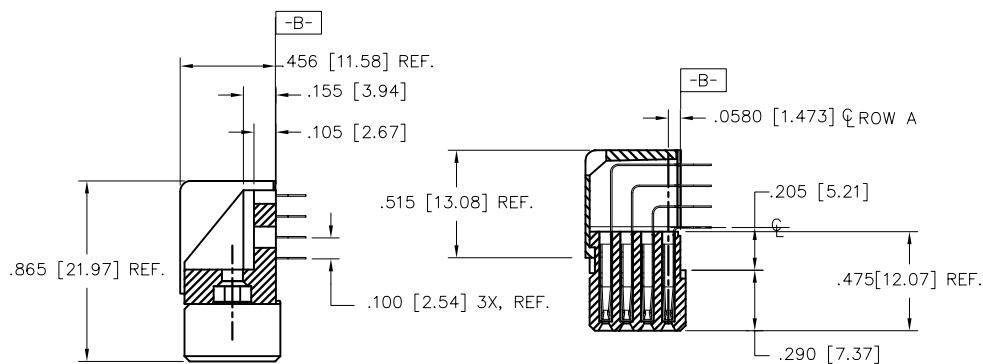
PRODUCT NUMBER  
SEE TABLE



Copyright FCI

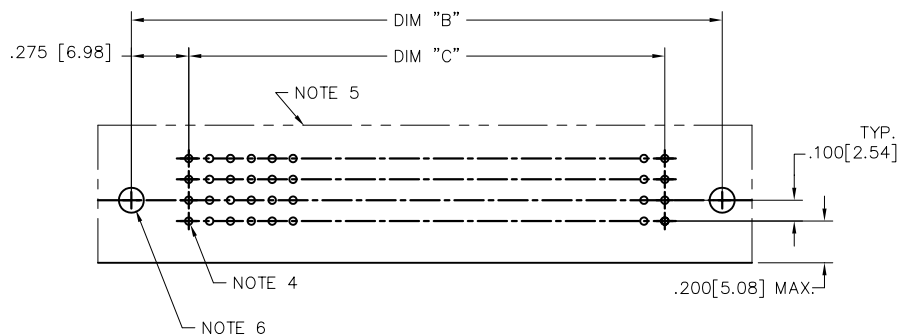
mat'l. code NOTE 3		surface ISO 1302	tolerance ISO 406 ISO 1101	projection INCH/MM	product family HPC				
ltr	ecm no	dr	date	tolerances unless otherwise specified	title				
P	V10824	JRW	2/6/01	linear	4 ROW R/A RECEPTACLE PRESS FIT				
R	v05-0460	DAI	7/13/05	linear	scale 1:1				
S	v05-1003	DAI	11/1/05	linear					
T	v05-1041	HTB	11/14/05	linear	dwg no				
U	M06-0255	MHT	7/06/06	linear	sheet 1 of 7 size				
V	M06-0388	MHT	10/04/06	linear	50642				
W	M08-0149	MHT	5/27/08	linear	A3				
sheet	revision	W	W	W	W	W	W	type	Product Customer Drawing
index	sheet	1	2	3	4	5	6	7	

PRODUCT NUMBER  
SEE TABLE



SECTION A-A

SECTION B-B



RECOMMENDED PCB LAYOUT

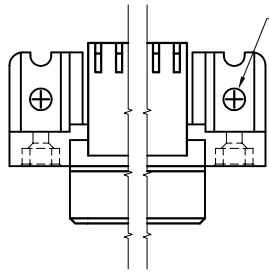
(ALL HOLES LOCATED ON .100[2.54] GRID UNLESS OTHERWISE SHOWN)



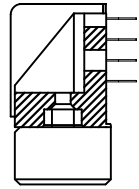
Copyright FCJ

mat'l. code NOTE 3		surface ISO 1302	tolerance ISO 406 ISO 1101	projection 	product family HPC
ltr	ecn no	dr	date	tolerances unless otherwise specified	title 4 ROW R/A RECEPTACLE PRESS FIT
W				angles linear XX±.01/XX±.03 .XXX±.005/XX±.013 XXXX±.0020/XXX±.005	INCH/MM scale 1:1
				dr D.INGRAM 7/13/05	dwg no 50642 sheet 2 of 7 size A3
				enr D.HORCHLER 7/13/05	type Product Customer Drawing
				chr T.BREWBAKER 7/13/05	
				appd D.HORCHLER 7/13/05	
sheet index	revision sheet				

PRODUCT NUMBER  
SEE TABLE

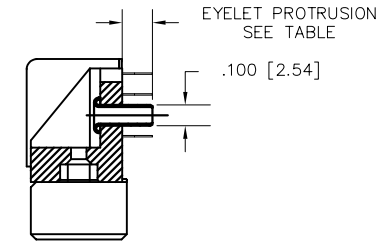
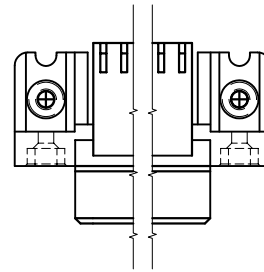


Ø.104 [Ø2.64]



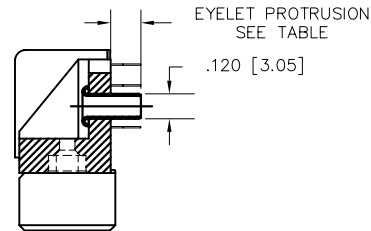
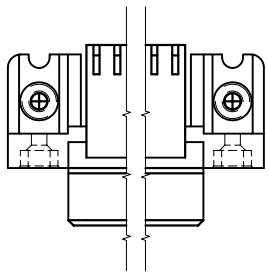
SECTION A-A

SPECIAL FEATURE OPTION A  
SEE NOTE 6



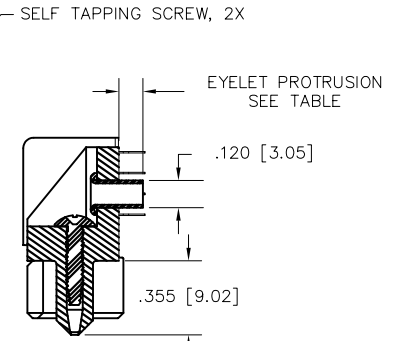
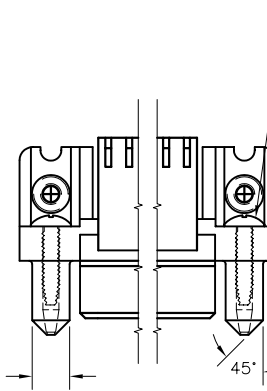
SECTION A-A

SPECIAL FEATURE OPTION B  
SEE NOTE 6



SECTION A-A

SPECIAL FEATURE OPTION C  
SEE NOTE 6

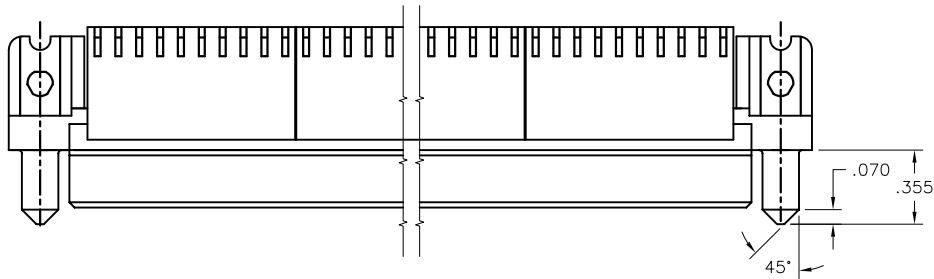


SECTION A-A

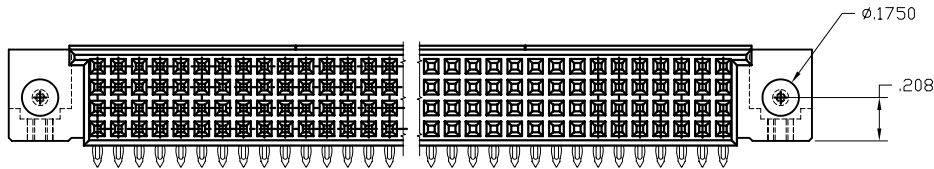
SPECIAL FEATURE OPTION D  
SEE NOTE 6

mat'l. code NOTE 3		surface ISO 1302	tolerance ISO 406 ISO 1101	projection INCH/MM	product family HPC
ltr	ecm no	dr	date	tolerances unless otherwise specified	title 4 ROW R/A RECEPTACLE PRESS FIT
W				linear XX±.01/XX±.03 XXX±.005/XX±.013 XXXX±.0020/XXX±.005	scale 1:1
				angles 0°±2°	dwg no 50642
				dr D.INGRAM 7/13/05	sheet 3 of 7 size A3
				engr D.HORCHLER 7/13/05	type Product Customer Drawing
				chr T.BREWBAKER 7/13/05	
				appd D.HORCHLER 7/13/05	
sheet index	revision sheet				

PRODUCT NUMBER  
SEE TABLE



SPECIAL FEATURE OPTION E  
SEE NOTE 6



mat'l. code NOTE 3		surface ISO 1302	tolerance ISO 406 ISO 1101	projection 	product family HPC
ltr	ecn no	dr	date	tolerances unless otherwise specified	title 4 ROW R/A RECEPTACLE PRESS FIT
w				linear XX±.01/XX±.03 XXX±.005/XX±.013 XXXX±.0020/XXX±.005	INCH/MM
				angles 0°±2'	scale 1:1
		dr	D.INGRAM	7/13/05	
		enr	D.HORCHLER	7/13/05	
		chr	T.BREWBAKER	7/13/05	
		appd	D.HORCHLER	7/13/05	
sheet index	revision sheet				dwg no 50642 sheet 4 of 7 size A3 type Product Customer Drawing



Copyright FCJ

PRODUCT NUMBER
50642-XX004
50642-XX004LF

SELECT LOAD ( 50642-XX004 AND 50642-XX004LF ONLY)

60	55	50	45	40	35	31
A	A	A	A	A	A	A
B	B	B	B	B	B	B
C	C	C	C	C	C	C

30	25	20	15	10	5	1
A	A	A	A			
B	B					

D  
C  
B  
A

TERM.  
1

SPECIAL NOTES FOR -XX004 AND -XX004LF ONLY:

- ALL POSITIONS ARE LOADED, EXCEPT OMTS AS SHOWN.
- COLUMN 1, ROW A IS DESIGNATED AS SIGNAL TERM. 1, AS VIEWED FROM THE MATING FACE.
- BECAUSE OF THE SELECT LOAD TERMINAL POSITIONS, ONLY 2 PRESS BLOCKS NEED TO BE INSTALLED—ONE PLACED STARTING IN COL. 25(\*) AND ENDING IN COL. 34 THE OTHER PLACED STARTING IN COL. 35(\*) AND ENDING IN COL.44.
- SIGNAL DATA FOR 50642-XX004 AND -XX004LF:  
SIZE 4 x 60  
TOTAL NO. OF POSITIONS - 240  
NO. OF POSITIONS LOADED - 032

ITEM KEY	QTY.
A	16
B	8
C	8
BLANK	208

mat'l. code NOTE 3				surface ISO 1302	tolerance ISO 406 ISO 1101	projection ASME	product family HPC
ltr	ecn no	dr	date	tolerances unless otherwise specified		INCH/MM	title 4 ROW R/A RECEPTACLE PRESS FIT
				angles	linear	scale 1:1	dwg no 50642
				0°±2'	XXX±.005/XX±0.13 XXXX±.0020/XXX±0.05		sheet 5 of 7 size A3
				dr	D.INGRAM	7/13/05	FCJ type Product Customer Drawing
				engr	D.HORCHLER	7/13/05	
				chr	T.BREWBAKER	7/13/05	
				appd	D.HORCHLER	7/13/05	
sheet index	revision sheet						

PRODUCT NUMBER	NUMBER OF POSITIONS NOTE 2	TAIL LENGTH	SPECIAL FEATURES SEE NOTE 6	SOLDER TAIL PLATING	CONTACT PLATING	EYELET PROTRUSION	GUIDE PINS
50642-1YYYE	YYY	.125±.010/3.18±.25	-	TIN LEAD	30u"/.76u Au	N/A	NONE
50642-1YYYELF	YYY	.125±.010/3.18±.25	-	TIN	30u"/.76u GXT	N/A	NONE
50642-1YYYEA	YYY	.125±.010/3.18±.25	"A"	TIN LEAD	30u"/.76u Au	N/A	NONE
50642-1YYYEALF	YYY	.125±.010/3.18±.25	"A"	TIN	30u"/.76u GXT	N/A	NONE
50642-1YYYEB	YYY	.125±.010/3.18±.25	"B"	TIN LEAD	30u"/.76u Au	.145/3.68	NONE
50642-1YYYEBLF	YYY	.125±.010/3.18±.25	"B"	TIN	30u"/.76u GXT	.145/3.68	NONE
50642-1YYYEC	YYY	.125±.010/3.18±.25	"C"	TIN LEAD	30u"/.76u Au	.115/2.92	NONE
50642-1YYYECLF	YYY	.125±.010/3.18±.25	"C"	TIN	30u"/.76u GXT	.115/2.92	NONE
50642-1YYYED	YYY	.125±.010/3.18±.25	"D"	TIN LEAD	30u"/.76u Au	.115/2.92	2
50642-1YYYEDLF	YYY	.125±.010/3.18±.25	"D"	TIN	30u"/.76u GXT	.115/2.92	2
50642-1YYYEE	YYY	.125±.010/3.18±.25	"E"	TIN LEAD	30u"/.76u Au	N/A	2
50642-1YYYEELF	YYY	.125±.010/3.18±.25	"E"	TIN	30u"/.76u GXT	N/A	2
50642-1YYYF	YYY	.145±.010/3.68±.25	-	TIN LEAD	30u"/.76u Au	N/A	NONE
50642-1YYYFLF	YYY	.145±.010/3.68±.25	-	TIN	30u"/.76u GXT	N/A	NONE
50642-1YYYFA	YYY	.145±.010/3.68±.25	"A"	TIN LEAD	30u"/.76u Au	N/A	NONE
50642-1YYYFALF	YYY	.145±.010/3.68±.25	"A"	TIN	30u"/.76u GXT	N/A	NONE
50642-1YYYFC	YYY	.145±.010/3.68±.25	"C"	TIN LEAD	30u"/.76u Au	.145/3.68	NONE
50642-1YYYFCLF	YYY	.145±.010/3.68±.25	"C"	TIN	30u"/.76u GXT	.145/3.68	NONE
50642-1YYYFD	YYY	.145±.010/3.68±.25	"D"	TIN LEAD	30u"/.76u Au	.145/3.68	2
50642-1YYYFDLF	YYY	.145±.010/3.68±.25	"D"	TIN	30u"/.76u GXT	.145/3.68	2
50642-1YYYFE	YYY	.145±.010/3.68±.25	"E"	TIN LEAD	30u"/.76u Au	N/A	2
50642-1YYYFELF	YYY	.145±.010/3.68±.25	"E"	TIN	30u"/.76u GXT	N/A	2
50642-XX004	240	.125±.010/3.18±.25	SEE SHEET 5	TIN LEAD	30u"/.76u Au	N/A	NONE
50642-XX004LF	240	.125±.010/3.18±.25	SEE SHEET 5	TIN	30u"/.76u GXT	N/A	NONE



FCIconnect.com

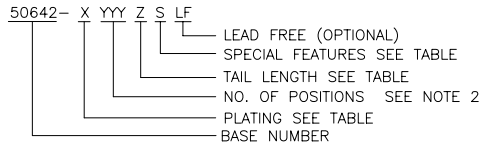
Copyright FCI

mat'l. code		surface		tolerance		projection		product family	
NOTE 3		ISO 1302		ISO 406 ISO 1101				HPC	
ltr	ecr no	dr	date	tolerances unless otherwise specified		INCH/MM		title	
W				angles	linear	scale 1:1		4 ROW R/A RECEPTACLE PRESS FIT	
				0°±2°				dwg no	
				dr	D.INGRAM	7/13/05		sheet 6 of 7 size	
				enr	D.HORCHLER	7/13/05		50642	
				chr	T.BREWBAKER	7/13/05		A3	
				appd	D.HORCHLER	7/13/05		type	
sheet	revision							Product Customer Drawing	
index	sheet								

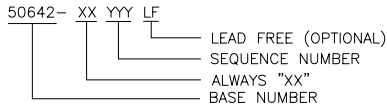
PRODUCT NUMBER  
SEE TABLE

NOTES:

①. PRODUCT NUMBERING CODE



PRODUCT NUMBERING CODE FOR SELECT LOAD



- ②. THIS PRODUCT IS CONFIGURED IN SIZES OF 6 THRU 80 COLUMNS IN INCREMENTS OF ONE, i.e. 6, 7, 8, 9, .....79, 80.
- ③. MATERIAL: PRESS BLOCK – HIGH TEMP THERMOPLASTIC;  
HOUSING—GLASS AND MINERAL FILLED HIGH TEMPERTURE THERMOPLASTIC, FLAME RETARDANT PER UL94V-0. COLOR—BLACK  
CONTACT—BeCu
- ④. DRILLED HOLE DIA OF .0453±.001 INCH FINISHED TO .0400±.0030 INCH BY PLATING SnPb OR OTHER PLATING 0.0003 TO 0.0006 INCHES THICK WITH A COPPER UNDERPLATE AS NEEDED.
- ⑤. INFORMATION DOCUMENT: FOR PCB STAY- AWAY ZONE, SEE TA-0954.
- ⑥. SPECIAL FEATURES (SEE PRODUCT NUMBER TABLE, AND DETIALS ON SHEET 3)  
- IF NO SPECIAL FEATURE CODE IS SELECTED, PCB MOUNTING HOLE DIMENSION TO BE  $\phi.120\pm.003[3.05\pm0.07]$   
"A" PCB MOUNTING HOLE DIMENSION TO BE  $\phi.100\pm.003[2.54\pm0.07]$   
"B" INCLUDES PRE-INSTALLED EYELETS FOR PCB ATTACHMENT IN A  $\phi.100\pm.003[2.54\pm0.07]$  MOUNTING HOLE. (E TAIL ONLY)  
"C" INCLUDES PRE-INSTALLED EYELETS FOR PCB ATTACHMENT IN A  $\phi.120\pm.003[3.05\pm0.07]$  MOUNTING HOLE.  
"D" INCLUDES PRE-INSTALLED EYELETS WITH MOLDED GUIDE PINS FOR PCB ATTACHMENT IN A  $\phi.120\pm.003[3.05\pm0.07]$  MOUNTING HOLE.  
"E" INCLUDES MOLDED GUIDE PINS WITH TRI-HOLE SHAPED MOUNTING HOLES. (EYELETS NOT INSTALLED)
- ⑦. LENGTH CALCULATIONS:  
DIMENSION "A" CALCULATION =  $.100 [2.54] \times \text{NO. OF COLUMNS} + .75 [19.1]$   
DIMENSION "B" CALCULATION =  $.100 [2.54] \times \text{NO. OF COLUMNS} + .450[11.43]$   
DIMENSION "C" CALCULATION =  $.100 [2.54] \times \text{NO. OF COLUMNS} - .100[2.54]$
- ⑧. MANUFACTURE'S LOGO, PN, AND LOT CODE TO APPEAR ON THIS SURFACE.
9. THIS PRODUCT (WITH "LF" SUFFIX) MEETS EUROPEAN UNION DIRECTIVES AND OTHER COUNTRY REGULATIONS AS DESCRIBED IN GS-22-008.
10. THIS HOUSING WILL WITHSTAND EXPOSURE TO 260°C PEAK TEMPERTURE FOR 10-30 SECONDS IN A CONVECTION, INFRA-RED OR VAPOR PHASE REFLOW OVEN.
11. ALL POSITIONS ARE LOADED EXCEPT FOR -XXXXY ASSEMBLIES WHICH HAVE SELECTIVE LOADING.

mat'l. code NOTE 3		surface ISO 1302	tolerance ISO 406 ISO 1101	projection 	product family HPC
ltr	ecn no	dr	date	tolerances unless otherwise specified	title 4 ROW R/A RECEPTACLE PRESS FIT
w				angles linear linear linear	INCH/MM scale 1:1
				dr D.INGRAM 7/13/05	dwg no 50642
				enrg D.HORCHLER 7/13/05	sheet 7 of 7 size A3
				chr T.BREWBAKER 7/13/05	type Product Customer Drawing
				appd D.HORCHLER 7/13/05	
sheet	revision				
index	sheet				



Компания «ЭлектроПласт» предлагает заключение долгосрочных отношений при поставках импортных электронных компонентов на взаимовыгодных условиях!

Наши преимущества:

- Оперативные поставки широкого спектра электронных компонентов отечественного и импортного производства напрямую от производителей и с крупнейших мировых складов;
- Поставка более 17-ти миллионов наименований электронных компонентов;
- Поставка сложных, дефицитных, либо снятых с производства позиций;
- Оперативные сроки поставки под заказ (от 5 рабочих дней);
- Экспресс доставка в любую точку России;
- Техническая поддержка проекта, помощь в подборе аналогов, поставка прототипов;
- Система менеджмента качества сертифицирована по Международному стандарту ISO 9001;
- Лицензия ФСБ на осуществление работ с использованием сведений, составляющих государственную тайну;
- Поставка специализированных компонентов (Xilinx, Altera, Analog Devices, Intersil, Interpoint, Microsemi, Aeroflex, Peregrine, Syfer, Eurofarad, Texas Instrument, Miteq, Cobham, E2V, MA-COM, Hittite, Mini-Circuits, General Dynamics и др.);

Помимо этого, одним из направлений компании «ЭлектроПласт» является направление «Источники питания». Мы предлагаем Вам помощь Конструкторского отдела:

- Подбор оптимального решения, техническое обоснование при выборе компонента;
- Подбор аналогов;
- Консультации по применению компонента;
- Поставка образцов и прототипов;
- Техническая поддержка проекта;
- Защита от снятия компонента с производства.



#### Как с нами связаться

**Телефон:** 8 (812) 309 58 32 (многоканальный)

**Факс:** 8 (812) 320-02-42

**Электронная почта:** [org@eplast1.ru](mailto:org@eplast1.ru)

**Адрес:** 198099, г. Санкт-Петербург, ул. Калинина, дом 2, корпус 4, литера А.