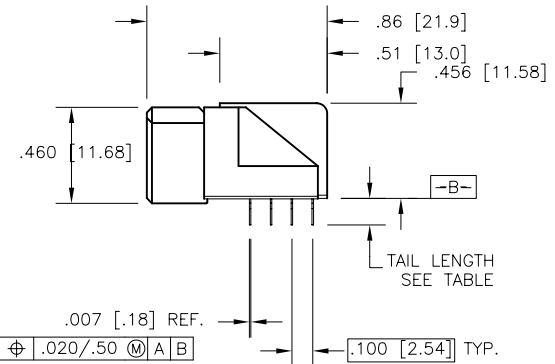
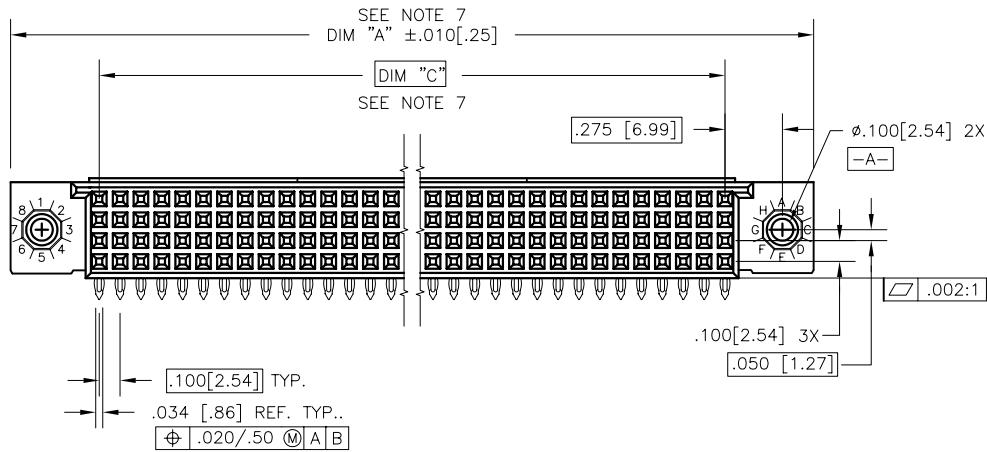
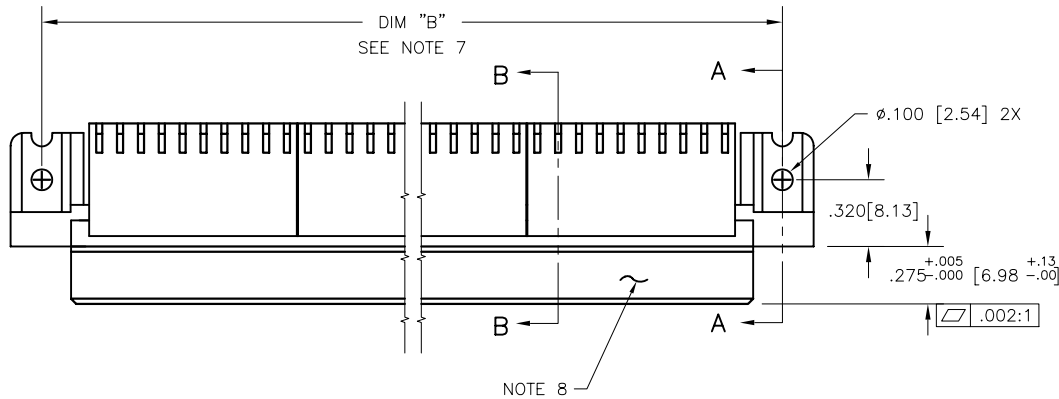


PRODUCT NUMBER
SEE TABLE

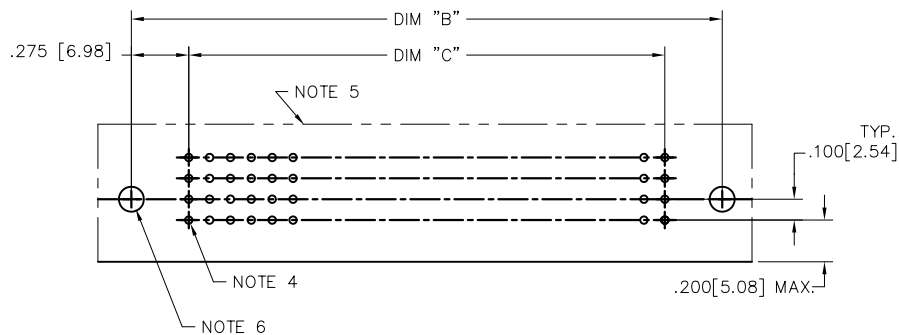
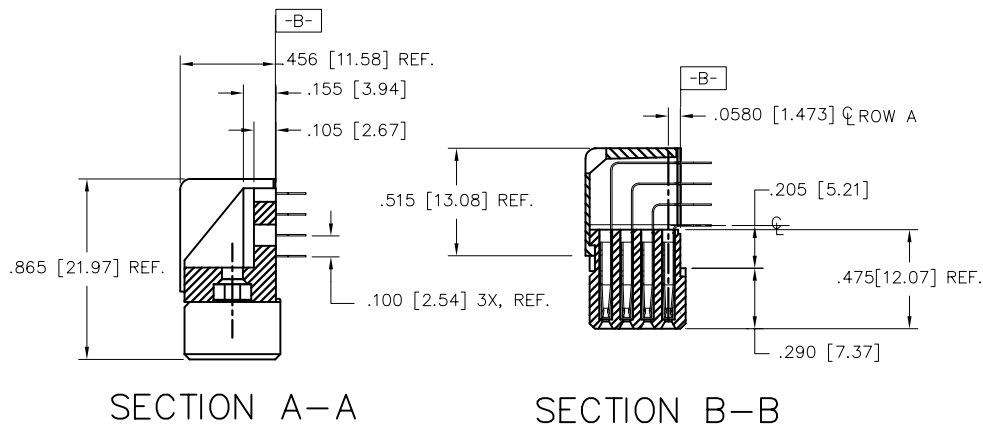


FCJ
FCconnect.com

Copyright FCJ

mat'l. code			surface		tolerance		projection		product family		
NOTE 3			ISO 1302		ISO 406 ISO 1101				HPC		
ltr	ecn no	dr	date		tolerances unless otherwise specified						
P	V10824	JRW	2/6/01		angles	linear				title	
R	v05-0460	DAI	7/13/05						4 ROW R/A RECEPTACLE PRESS FIT		
S	v05-1003	DAI	11/1/05		0°±2'				scale 1:1		
T	v05-1041	HTB	11/14/05		dr		D.INGRAM		7/13/05		
U	M06-0255	MHT	7/06/06		engr		D.HORCHLER		7/13/05		
V	M06-0388	MHT	10/04/06		chr		T.BREWBAKER		7/13/05		
W	M08-0149	MHT	5/27/08		appd		D.HORCHLER		7/13/05		
sheet	revision	W	W	W	W	W	W	W			
index	sheet	1	2	3	4	5	6	7	dwg no 50642 sheet 1 of 7 size A3 type Product Customer Drawing		

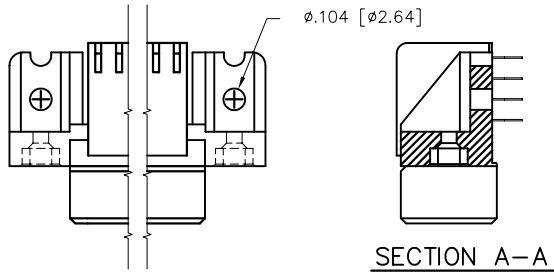
PRODUCT NUMBER
SEE TABLE



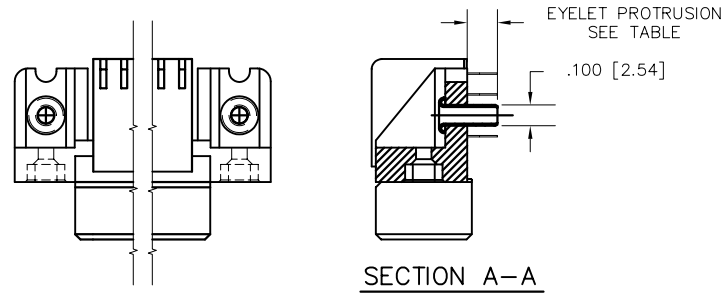
RECOMMENDED PCB LAYOUT
(ALL HOLES LOCATED ON .100[2.54]
GRID UNLESS OTHERWISE SHOWN)

mat'l. code NOTE 3		surface ISO 1302	tolerance ISO 406 ISO 1101	projection 	product family HPC
ltr	ecn no	dr	date	tolerances unless otherwise specified	title 4 ROW R/A RECEPTACLE PRESS FIT
W				angles linear XX±.01/XX±.03 .XXX±.005/XX±.013 XXXX±.0020/XXX±.005	INCH/MM scale 1:1
				0°±2'	dwg no 50642
				dr D.INGRAM 7/13/05	sheet 2 of 7 size A3
				enr D.HORCHLER 7/13/05	type Product Customer Drawing
				chr T.BREWBAKER 7/13/05	
				appd D.HORCHLER 7/13/05	
sheet index	revision sheet				

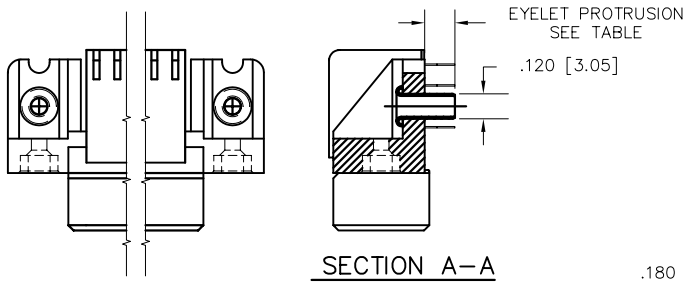
PRODUCT NUMBER
SEE TABLE



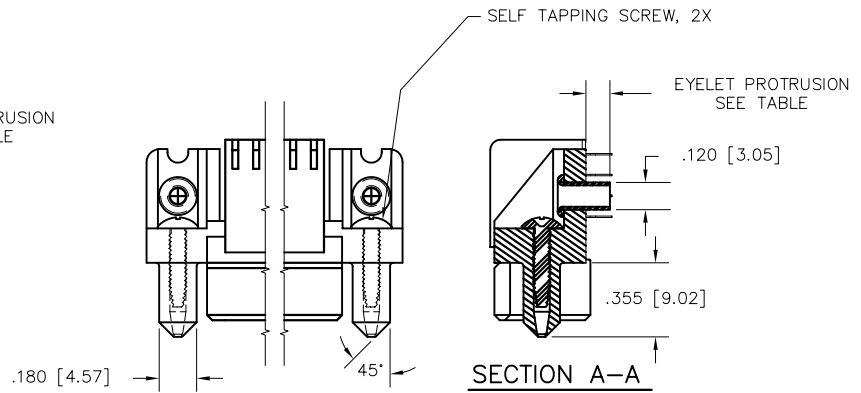
SPECIAL FEATURE OPTION A
SEE NOTE 6



SPECIAL FEATURE OPTION B
SEE NOTE 6



SPECIAL FEATURE OPTION C
SEE NOTE 6



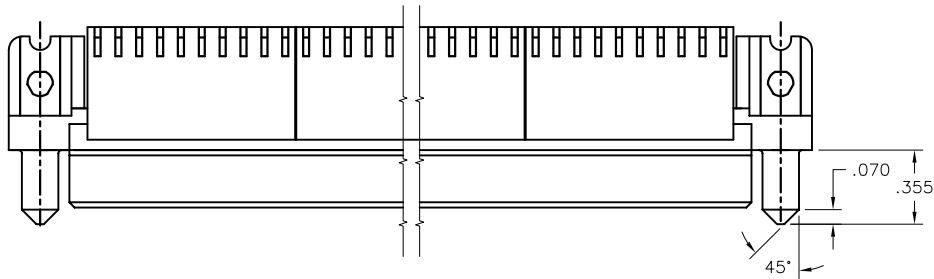
SPECIAL FEATURE OPTION D
SEE NOTE 6



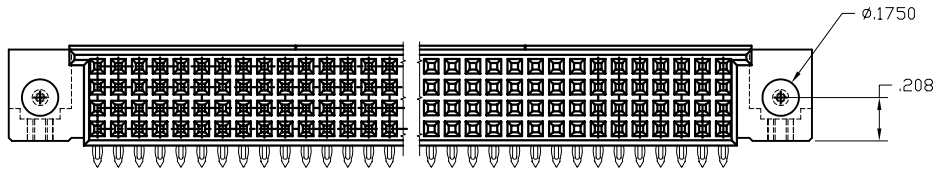
Copyright FCI

mat'l. code NOTE 3		surface ISO 1302	tolerance ISO 406 ISO 1101	projection INCH/MM	product family HPC
ltr	ecn no	dr	date	tolerances unless otherwise specified	title 4 ROW R/A RECEPTACLE PRESS FIT
W				angles linear 0°±2°	INCH/MM scale 1:1
				dr D.INGRAM 7/13/05	dwg no 50642
				engr D.HORCHLER 7/13/05	sheet 3 of 7 size A3
				chr T.BREWBAKER 7/13/05	type Product Customer Drawing
				appd D.HORCHLER 7/13/05	
sheet index	revision sheet				

PRODUCT NUMBER
SEE TABLE



SPECIAL FEATURE OPTION E
SEE NOTE 6



Copyright FCJ

mat'l. code NOTE 3		surface ISO 1302	tolerance ISO 406 ISO 1101	projection 	product family HPC
ltr	ecn no	dr	date	tolerances unless otherwise specified	title 4 ROW R/A RECEPTACLE PRESS FIT
W				linear XX±.01/XX±.03 .XXX±.005/XX±0.13 XXXX±.0020/XXX±0.05	INCH/MM
				angles 0°±2'	scale 1:1
		dr	D.INGRAM	7/13/05	
		enr	D.HORCHLER	7/13/05	
		chr	T.BREWBAKER	7/13/05	
		appd	D.HORCHLER	7/13/05	
sheet index	revision sheet				dwg no 50642 sheet 4 of 7 size A3 type Product Customer Drawing

PRODUCT NUMBER
50642-XX004
50642-XX004LF

SELECT LOAD (50642-XX004 AND 50642-XX004LF ONLY)

60										55										50										45										40										35										31									
A										A										A										A										A										A										A									
B										B										B										B										B										B																			
C										C										C										C										C										C																			

30										25										20										15										10										5										1									
A										A										A										A										A										A																			
B										B										B										B										B										B																			

D
C
B
A

TERM.
1

SPECIAL NOTES FOR -XX004 AND -XX004LF ONLY:

- ALL POSITIONS ARE LOADED, EXCEPT OMTS AS SHOWN.
- COLUMN 1, ROW A IS DESIGNATED AS SIGNAL TERM. 1, AS VIEWED FROM THE MATING FACE.
- BECAUSE OF THE SELECT LOAD TERMINAL POSITIONS, ONLY 2 PRESS BLOCKS NEED TO BE INSTALLED—ONE PLACED STARTING IN COL. 25(*) AND ENDING IN COL. 34 THE OTHER PLACED STARTING IN COL. 35(*) AND ENDING IN COL.44.
- SIGNAL DATA FOR 50642-XX004 AND -XX004LF:
SIZE 4 x 60
TOTAL NO. OF POSITIONS - 240
NO. OF POSITIONS LOADED - 032

ITEM KEY	QTY.
A	16
B	8
C	8
BLANK	208

mat'l. code NOTE 3				surface ISO 1302 <input checked="" type="checkbox"/>		tolerance ISO 406 ISO 1101		projection 		product family HPC					
ltr	ecn no	dr	date	tolerances unless otherwise specified						title 4 ROW R/A RECEPTACLE PRESS FIT					
w				angles		linear		INCH/MM		scale 1:1					
				0°±2'		.XX±.01/XX±0.3				dwg no 50642 sheet 5 of 7 size A3					
						.XXX±.005/XX±0.13				type Product Customer Drawing					
						.XXXX±.0020/XXX±0.05									
sheet			revision			dr		enr		chr		appd			
index			sheet			D.INGRAM 7/13/05		D.HORCHLER 7/13/05		T.BREWBAKER 7/13/05		D.HORCHLER 7/13/05			

PRODUCT NUMBER	NUMBER OF POSITIONS NOTE 2	TAIL LENGTH	SPECIAL FEATURES SEE NOTE 6	SOLDER TAIL PLATING	CONTACT PLATING	EYELET PROTRUSION	GUIDE PINS
50642-1YYE	YYY	.125±.010/3.18±.25	-	TIN LEAD	30u"/.76u Au	N/A	NONE
50642-1YYELF	YYY	.125±.010/3.18±.25	-	TIN	30u"/.76u GXT	N/A	NONE
50642-1YYEA	YYY	.125±.010/3.18±.25	"A"	TIN LEAD	30u"/.76u Au	N/A	NONE
50642-1YYEALF	YYY	.125±.010/3.18±.25	"A"	TIN	30u"/.76u GXT	N/A	NONE
50642-1YYEB	YYY	.125±.010/3.18±.25	"B"	TIN LEAD	30u"/.76u Au	.145/3.68	NONE
50642-1YYEBLF	YYY	.125±.010/3.18±.25	"B"	TIN	30u"/.76u GXT	.145/3.68	NONE
50642-1YYEC	YYY	.125±.010/3.18±.25	"C"	TIN LEAD	30u"/.76u Au	.115/2.92	NONE
50642-1YYECLF	YYY	.125±.010/3.18±.25	"C"	TIN	30u"/.76u GXT	.115/2.92	NONE
50642-1YYED	YYY	.125±.010/3.18±.25	"D"	TIN LEAD	30u"/.76u Au	.115/2.92	2
50642-1YYEDLF	YYY	.125±.010/3.18±.25	"D"	TIN	30u"/.76u GXT	.115/2.92	2
50642-1YYEE	YYY	.125±.010/3.18±.25	"E"	TIN LEAD	30u"/.76u Au	N/A	2
50642-1YYEELF	YYY	.125±.010/3.18±.25	"E"	TIN	30u"/.76u GXT	N/A	2
50642-1YYF	YYY	.145±.010/3.68±.25	-	TIN LEAD	30u"/.76u Au	N/A	NONE
50642-1YYFLF	YYY	.145±.010/3.68±.25	-	TIN	30u"/.76u GXT	N/A	NONE
50642-1YYFA	YYY	.145±.010/3.68±.25	"A"	TIN LEAD	30u"/.76u Au	N/A	NONE
50642-1YYFALF	YYY	.145±.010/3.68±.25	"A"	TIN	30u"/.76u GXT	N/A	NONE
50642-1YYFC	YYY	.145±.010/3.68±.25	"C"	TIN LEAD	30u"/.76u Au	.145/3.68	NONE
50642-1YYFCLF	YYY	.145±.010/3.68±.25	"C"	TIN	30u"/.76u GXT	.145/3.68	NONE
50642-1YYFD	YYY	.145±.010/3.68±.25	"D"	TIN LEAD	30u"/.76u Au	.145/3.68	2
50642-1YYFDLF	YYY	.145±.010/3.68±.25	"D"	TIN	30u"/.76u GXT	.145/3.68	2
50642-1YYFE	YYY	.145±.010/3.68±.25	"E"	TIN LEAD	30u"/.76u Au	N/A	2
50642-1YYFELF	YYY	.145±.010/3.68±.25	"E"	TIN	30u"/.76u GXT	N/A	2
50642-XX004	240	.125±.010/3.18±.25	SEE SHEET 5	TIN LEAD	30u"/.76u Au	N/A	NONE
50642-XX004LF	240	.125±.010/3.18±.25	SEE SHEET 5	TIN	30u"/.76u GXT	N/A	NONE



FCIconnect.com

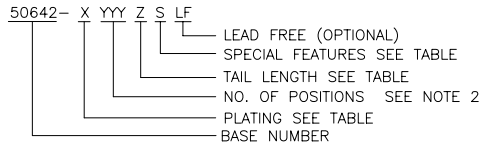
Copyright FCI

mat'l. code		surface		tolerance		projection		product family	
NOTE 3		ISO 1302		ISO 406 ISO 1101				HPC	
ltr	ecr no	dr	date	tolerances unless otherwise specified					
w				angles	linear	INCH/MM		title	
				0°±2°	.XX±.01/XX±0.3	scale 1:1		4 ROW R/A RECEPTACLE PRESS FIT	
					.XXX±.005/XX±0.13			dwg no	
				dr	D.INGRAM	7/13/05			sheet 6 of 7 size
				enr	D.HORCHLER	7/13/05			50642 A3
				chr	T.BREWBAKER	7/13/05			
				appd	D.HORCHLER	7/13/05			
sheet	revision								type
index	sheet								Product Customer Drawing

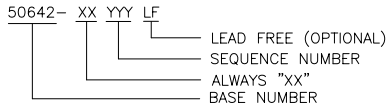
PRODUCT NUMBER
SEE TABLE

NOTES:

①. PRODUCT NUMBERING CODE



PRODUCT NUMBERING CODE FOR SELECT LOAD



- ②. THIS PRODUCT IS CONFIGURED IN SIZES OF 6 THRU 80 COLUMNS IN INCREMENTS OF ONE, i.e. 6, 7, 8, 9,79, 80.
- ③. MATERIAL: PRESS BLOCK – HIGH TEMP THERMOPLASTIC;
HOUSING—GLASS AND MINERAL FILLED HIGH TEMPERTURE THERMOPLASTIC, FLAME RETARDANT PER UL94V-0. COLOR—BLACK
CONTACT—BeCu
- ④. DRILLED HOLE DIA OF .0453±.001 INCH FINISHED TO .0400±.0030 INCH BY PLATING SnPb OR OTHER PLATING 0.0003 TO 0.0006 INCHES THICK WITH A COPPER UNDERPLATE AS NEEDED.
- ⑤. INFORMATION DOCUMENT: FOR PCB STAY- AWAY ZONE, SEE TA-0954.
- ⑥. SPECIAL FEATURES (SEE PRODUCT NUMBER TABLE, AND DETIALS ON SHEET 3)
- IF NO SPECIAL FEATURE CODE IS SELECTED, PCB MOUNTING HOLE DIMENSION TO BE $\phi.120\pm.003[3.05\pm0.07]$
"A" PCB MOUNTING HOLE DIMENSION TO BE $\phi.100\pm.003[2.54\pm0.07]$
"B" INCLUDES PRE-INSTALLED EYELETS FOR PCB ATTACHMENT IN A $\phi.100\pm.003[2.54\pm0.07]$ MOUNTING HOLE. (E TAIL ONLY)
"C" INCLUDES PRE-INSTALLED EYELETS FOR PCB ATTACHMENT IN A $\phi.120\pm.003[3.05\pm0.07]$ MOUNTING HOLE.
"D" INCLUDES PRE-INSTALLED EYELETS WITH MOLDED GUIDE PINS FOR PCB ATTACHMENT IN A $\phi.120\pm.003[3.05\pm0.07]$ MOUNTING HOLE.
"E" INCLUDES MOLDED GUIDE PINS WITH TRI-HOLE SHAPED MOUNTING HOLES. (EYELETS NOT INSTALLED)
- ⑦. LENGTH CALCULATIONS:
DIMENSION "A" CALCULATION = $.100 [2.54] \times \text{NO. OF COLUMNS} + .75 [19.1]$
DIMENSION "B" CALCULATION = $.100 [2.54] \times \text{NO. OF COLUMNS} + .450[11.43]$
DIMENSION "C" CALCULATION = $.100 [2.54] \times \text{NO. OF COLUMNS} - .100[2.54]$
- ⑧. MANUFACTURE'S LOGO, PN, AND LOT CODE TO APPEAR ON THIS SURFACE.
9. THIS PRODUCT (WITH "LF" SUFFIX) MEETS EUROPEAN UNION DIRECTIVES AND OTHER COUNTRY REGULATIONS AS DESCRIBED IN GS-22-008.
10. THIS HOUSING WILL WITHSTAND EXPOSURE TO 260°C PEAK TEMPERTURE FOR 10-30 SECONDS IN A CONVECTION, INFRA-RED OR VAPOR PHASE REFLOW OVEN.
11. ALL POSITIONS ARE LOADED EXCEPT FOR -XXXXY ASSEMBLIES WHICH HAVE SELECTIVE LOADING.

mat'l. code NOTE 3		surface ISO 1302	tolerance ISO 406 ISO 1101	projection 	product family HPC
ltr	ecn no	dr	date	tolerances unless otherwise specified	title 4 ROW R/A RECEPTACLE PRESS FIT
w				angles linear 0°±2°	INCH/MM scale 1:1
				dr D.INGRAM 7/13/05	dwg no 50642
				enrg D.HORCHLER 7/13/05	sheet 7 of 7 size A3
				chr T.BREWBAKER 7/13/05	type Product Customer Drawing
				appd D.HORCHLER 7/13/05	
sheet	revision				
index	sheet				



Компания «ЭлектроПласт» предлагает заключение долгосрочных отношений при поставках импортных электронных компонентов на взаимовыгодных условиях!

Наши преимущества:

- Оперативные поставки широкого спектра электронных компонентов отечественного и импортного производства напрямую от производителей и с крупнейших мировых складов;
- Поставка более 17-ти миллионов наименований электронных компонентов;
- Поставка сложных, дефицитных, либо снятых с производства позиций;
- Оперативные сроки поставки под заказ (от 5 рабочих дней);
- Экспресс доставка в любую точку России;
- Техническая поддержка проекта, помощь в подборе аналогов, поставка прототипов;
- Система менеджмента качества сертифицирована по Международному стандарту ISO 9001;
- Лицензия ФСБ на осуществление работ с использованием сведений, составляющих государственную тайну;
- Поставка специализированных компонентов (Xilinx, Altera, Analog Devices, Intersil, Interpoint, Microsemi, Aeroflex, Peregrine, Syfer, Eurofarad, Texas Instrument, Miteq, Cobham, E2V, MA-COM, Hittite, Mini-Circuits, General Dynamics и др.);

Помимо этого, одним из направлений компании «ЭлектроПласт» является направление «Источники питания». Мы предлагаем Вам помощь Конструкторского отдела:

- Подбор оптимального решения, техническое обоснование при выборе компонента;
- Подбор аналогов;
- Консультации по применению компонента;
- Поставка образцов и прототипов;
- Техническая поддержка проекта;
- Защита от снятия компонента с производства.



Как с нами связаться

Телефон: 8 (812) 309 58 32 (многоканальный)

Факс: 8 (812) 320-02-42

Электронная почта: org@eplast1.ru

Адрес: 198099, г. Санкт-Петербург, ул. Калинина, дом 2, корпус 4, литера А.