

POWR-GARD® Fuse

L15S SERIES TRADITIONAL HIGH-SPEED

150 V ac • Very Fast-Acting • 1–1000 A



Description

The L15S series is a traditional North American Bolted style high-speed fuse for protection of power semiconductor devices that are rated up to 150 V ac and up to 150 V dc. Littelfuse POWR-SPEED® products offer optimized circuit protection at the extremely fast speed required to protect power semiconductor devices such as silicon controlled rectifiers (SCR's), diodes, thyristors, triacs, transistors, and similar solid-state devices. These devices are used in power equipment including variable speed drives, power rectifiers, UPS systems, dc power supplies, and in a wide range of electronic equipment. May be used wherever extremely fast-acting, current-limiting fuses with no time delay are required.

Features/Benefits

- Compliance with US and Canadian Requirements
- Traditional North American Bolted Style dimensions
- Class aR performance
- Direct bus-bar mount or stud mount design
- RoHS Compliant

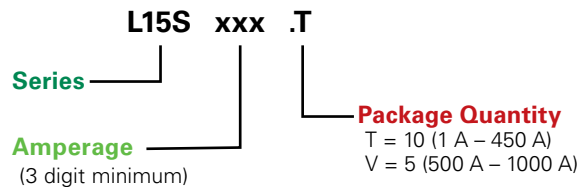
Applications

- Power Converters (Inverters, Rectifiers, UPS)
- Power Supplies
- Industrial Heaters
- Variable Speed Drives
- Battery Chargers
- Soft Starters

Specifications

| | |
|------------------------------|--|
| Voltage Ratings | Ac: 150 V Dc: 100 V – 150 V |
| Ampere Range | 1 – 1000 A |
| Interrupting Rating | Ac: 100 kA Dc: 20 kA Self Certified |
| Approvals | UL Recognized (File: E71611) CSA Recognized (File: LR29862) |
| Time Constant | 10 ms |
| Material | Body: Melamine Cap: Copper Alloy (Silver Plated) |
| Environmental | RoHS |
| Country of Origin | Mexico |
| Operating Temperature | -55 °C to +125 °C |
| Storage Temperature | Up to 35 °C with Relative Humidity <65 % |

Part Numbering System



| SERIES | AMPERAGE | CATALOG NUMBER | ORDERING NUMBER |
|--------|----------|----------------|-----------------|
| L15S | 005 | L15S005 | L15S005.T |
| L15S | 500 | L15S500 | L15S500.V |
| L15S | 1000 | L15S1000 | L15S1000V |

Recommended Fuse Holders

1LFS101/1LFS102
LSCR001/LSCR002

Web Resources

For additional information, visit: littelfuse.com/high-speed

Note: High-Speed fuses are designed for fixed installations. They are not intended for use in moving vehicle applications.

POWR-GARD® Fuse

L15S SERIES TRADITIONAL HIGH-SPEED

Electrical Specifications

| CATALOG NUMBER | AMPERAGE RATING | VOLTAGE RATING | | INTERRUPT RATING | |
|----------------|-----------------|----------------|-----|------------------|-------|
| | | AC | DC | AC | DC |
| L15S001 | 1 | 150 | 150 | 100 kA | 20 kA |
| L15S002 | 2 | 150 | 150 | 100 kA | 20 kA |
| L15S003 | 3 | 150 | 150 | 100 kA | 20 kA |
| L15S004 | 4 | 150 | 150 | 100 kA | 20 kA |
| L15S005 | 5 | 150 | 150 | 100 kA | 20 kA |
| L15S006 | 6 | 150 | 150 | 100 kA | 20 kA |
| L15S007 | 7 | 150 | 150 | 100 kA | 20 kA |
| L15S008 | 8 | 150 | 150 | 100 kA | 20 kA |
| L15S009 | 9 | 150 | 150 | 100 kA | 20 kA |
| L15S010 | 10 | 150 | 150 | 100 kA | 20 kA |
| L15S012 | 12 | 150 | 150 | 100 kA | 20 kA |
| L15S015 | 15 | 150 | 150 | 100 kA | 20 kA |
| L15S020 | 20 | 150 | 150 | 100 kA | 20 kA |
| L15S025 | 25 | 150 | 150 | 100 kA | 20 kA |
| L15S035 | 35 | 150 | 150 | 100 kA | 20 kA |
| L15S040 | 40 | 150 | 150 | 100 kA | 20 kA |
| L15S045 | 45 | 150 | 150 | 100 kA | 20 kA |
| L15S050 | 50 | 150 | 150 | 100 kA | 20 kA |
| L15S060 | 60 | 150 | 150 | 100 kA | 20 kA |
| L15S070 | 70 | 150 | 100 | 100 kA | 20 kA |
| L15S080 | 80 | 150 | 100 | 100 kA | 20 kA |
| L15S090 | 90 | 150 | 100 | 100 kA | 20 kA |
| L15S100 | 100 | 150 | 100 | 100 kA | 20 kA |
| L15S125 | 125 | 150 | 100 | 100 kA | 20 kA |
| L15S150 | 150 | 150 | 100 | 100 kA | 20 kA |
| L15S200 | 200 | 150 | 100 | 100 kA | 20 kA |
| L15S250 | 250 | 150 | 100 | 100 kA | 20 kA |
| L15S300 | 300 | 150 | 100 | 100 kA | 20 kA |
| L15S350 | 350 | 150 | 100 | 100 kA | 20 kA |
| L15S400 | 400 | 150 | 100 | 100 kA | 20 kA |
| L15S450 | 450 | 150 | 100 | 100 kA | 20 kA |
| L15S500 | 500 | 150 | 100 | 100 kA | 20 kA |
| L15S600 | 600 | 150 | 100 | 100 kA | 20 kA |
| L15S800 | 800 | 150 | 100 | 100 kA | 20 kA |
| L15S1000 | 1000 | 150 | 100 | 100 kA | 20 kA |

POWR-GARD® Fuse

L15S SERIES TRADITIONAL HIGH-SPEED

Ordering Information

| SERIES | AMPERAGE | AMPERE CODE | CATALOG NUMBER | ORDERING NUMBER | PACK QUANTITY | UPC |
|--------|----------|-------------|----------------|-----------------|---------------|-------------|
| L15S | 1 | 001. | L15S001 | L15S001.T | 10 Pcs/Box | 07945800218 |
| L15S | 2 | 002. | L15S002 | L15S002.T | 10 Pcs/Box | 07945800219 |
| L15S | 3 | 003. | L15S003 | L15S003.T | 10 Pcs/Box | 07945800220 |
| L15S | 4 | 004. | L15S004 | L15S004.T | 10 Pcs/Box | 07945800221 |
| L15S | 5 | 005. | L15S005 | L15S005.T | 10 Pcs/Box | 07945800222 |
| L15S | 6 | 006. | L15S006 | L15S006.T | 10 Pcs/Box | 07945800223 |
| L15S | 7 | 007. | L15S007 | L15S007.T | 10 Pcs/Box | 07945800224 |
| L15S | 8 | 008. | L15S008 | L15S008.T | 10 Pcs/Box | 07945800225 |
| L15S | 9 | 009. | L15S009 | L15S009.T | 10 Pcs/Box | 07945800226 |
| L15S | 10 | 010. | L15S010 | L15S010.T | 10 Pcs/Box | 07945800227 |
| L15S | 12 | 012. | L15S012 | L15S012.T | 10 Pcs/Box | 07945800228 |
| L15S | 15 | 015. | L15S015 | L15S015.T | 10 Pcs/Box | 07945800229 |
| L15S | 20 | 020. | L15S020 | L15S020.T | 10 Pcs/Box | 07945800230 |
| L15S | 25 | 025. | L15S025 | L15S025.T | 10 Pcs/Box | 07945800231 |
| L15S | 30 | 030. | L15S030 | L15S030.T | 10 Pcs/Box | 07945800232 |
| L15S | 35 | 035. | L15S035 | L15S035.T | 10 Pcs/Box | 07945800233 |
| L15S | 40 | 040. | L15S040 | L15S040.T | 10 Pcs/Box | 07945800234 |
| L15S | 45 | 045. | L15S045 | L15S045.T | 10 Pcs/Box | 07945800235 |
| L15S | 50 | 050. | L15S050 | L15S050.T | 10 Pcs/Box | 07945800236 |
| L15S | 60 | 060. | L15S060 | L15S060.T | 10 Pcs/Box | 07945800237 |
| L15S | 70 | 070. | L15S070 | L15S070.T | 10 Pcs/Box | 07945800238 |
| L15S | 80 | 080. | L15S080 | L15S080.T | 10 Pcs/Box | 07945800239 |
| L15S | 90 | 090. | L15S090 | L15S090.T | 10 Pcs/Box | 07945800240 |
| L15S | 100 | 100. | L15S100 | L15S100.T | 10 Pcs/Box | 07945800241 |
| L15S | 125 | 125. | L15S125 | L15S125.T | 10 Pcs/Box | 07945800242 |
| L15S | 150 | 150. | L15S150 | L15S150.T | 10 Pcs/Box | 07945800243 |
| L15S | 200 | 200. | L15S200 | L15S200.T | 10 Pcs/Box | 07945800244 |
| L15S | 250 | 250. | L15S250 | L15S250.T | 10 Pcs/Box | 07945800245 |
| L15S | 300 | 300. | L15S300 | L15S300.T | 10 Pcs/Box | 07945800246 |
| L15S | 350 | 350. | L15S350 | L15S350.T | 10 Pcs/Box | 07945800247 |
| L15S | 400 | 400. | L15S400 | L15S400.T | 10 Pcs/Box | 07945800248 |
| L15S | 450 | 450. | L15S450 | L15S450.T | 10 Pcs/Box | 07945800249 |
| L15S | 500 | 500. | L15S500 | L15S500.V | 5 Pcs/Box | 07945800250 |
| L15S | 600 | 600. | L15S600 | L15S600.V | 5 Pcs/Box | 07945800251 |
| L15S | 800 | 800. | L15S800 | L15S800.V | 5 Pcs/Box | 07945800252 |
| L15S | 1000 | 1000 | L15S1000 | L15S1000V | 5 Pcs/Box | 07945800253 |

Dimensions

| AMPERE RATING | FIG. NO. | DIMENSIONS INCHES (MM) | | | | | | | |
|---------------|----------|------------------------|-----------|-----------|-----------|-----------|----------|-----------|---------|
| | | A | B | C | D | E | F | G | H |
| 1 – 30 | 1 | 1½ (38.1) | — | ¾ (9.5) | 1¾ (10.3) | — | — | — | — |
| 31 – 60 | 1 | 2 (50.8) | — | ⅝ (15.9) | 1¾ (20.6) | — | — | — | — |
| 61 – 450 | 2 | 1½ (29.4) | 1⅞ (47.6) | 2¾ (55.6) | 2½ (67.5) | 1 (25.4) | ⅔ (17.1) | ⅝ (7.9) | ¾ (4.8) |
| 451 – 1000 | 2 | 1¼ (31.8) | 1⅞ (49.2) | 2¾ (65.1) | 3½ (88.9) | 1½ (38.1) | 1 (25.4) | 1½ (10.3) | ¼ (6.4) |

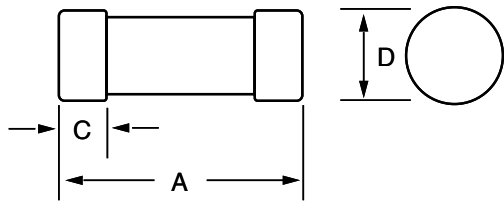


Figure 1

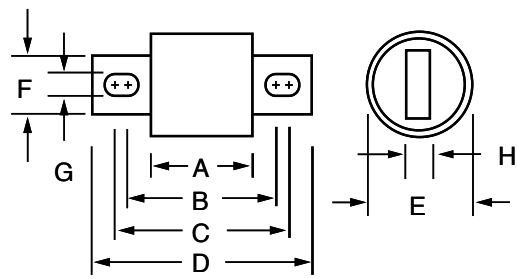
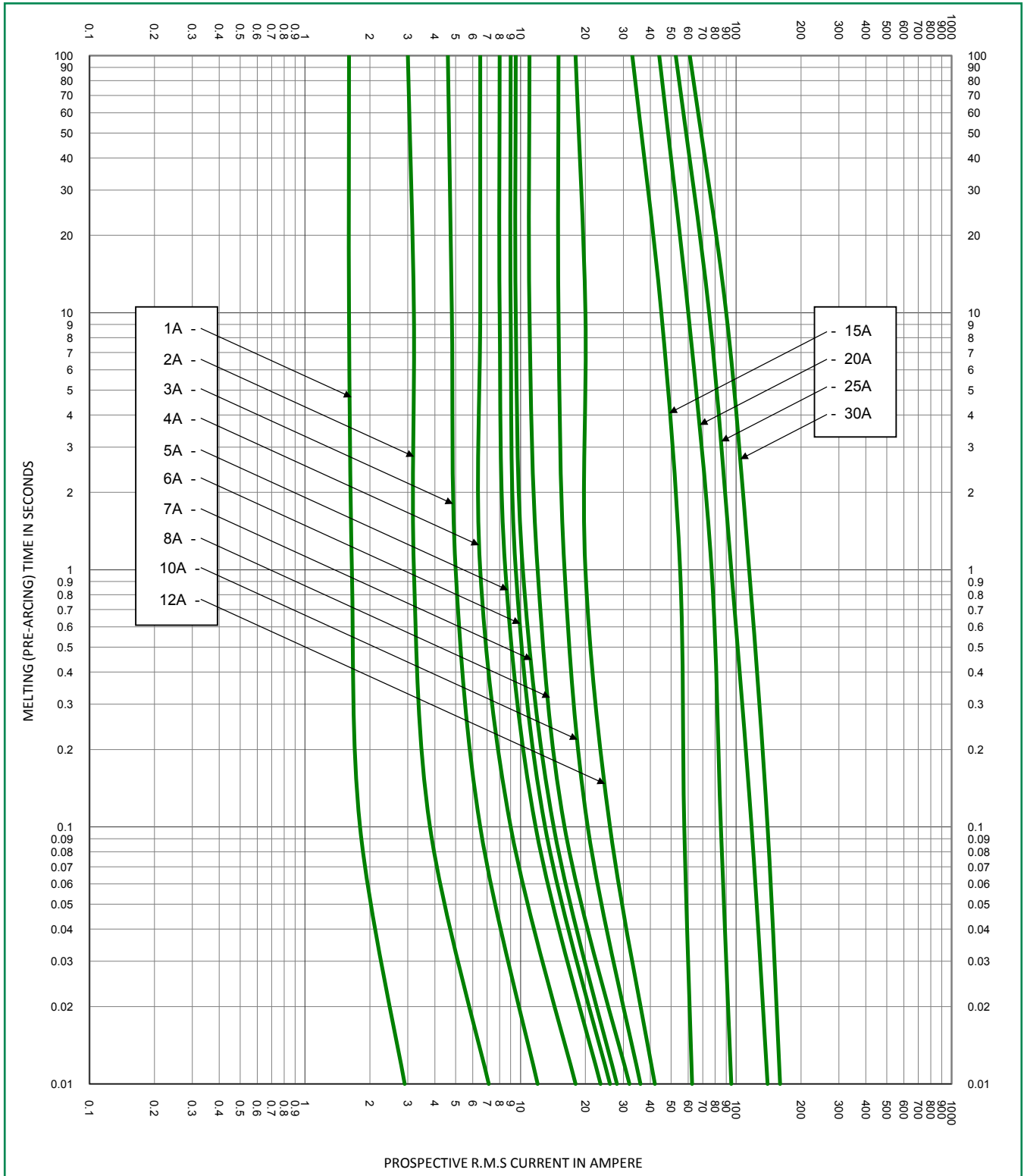


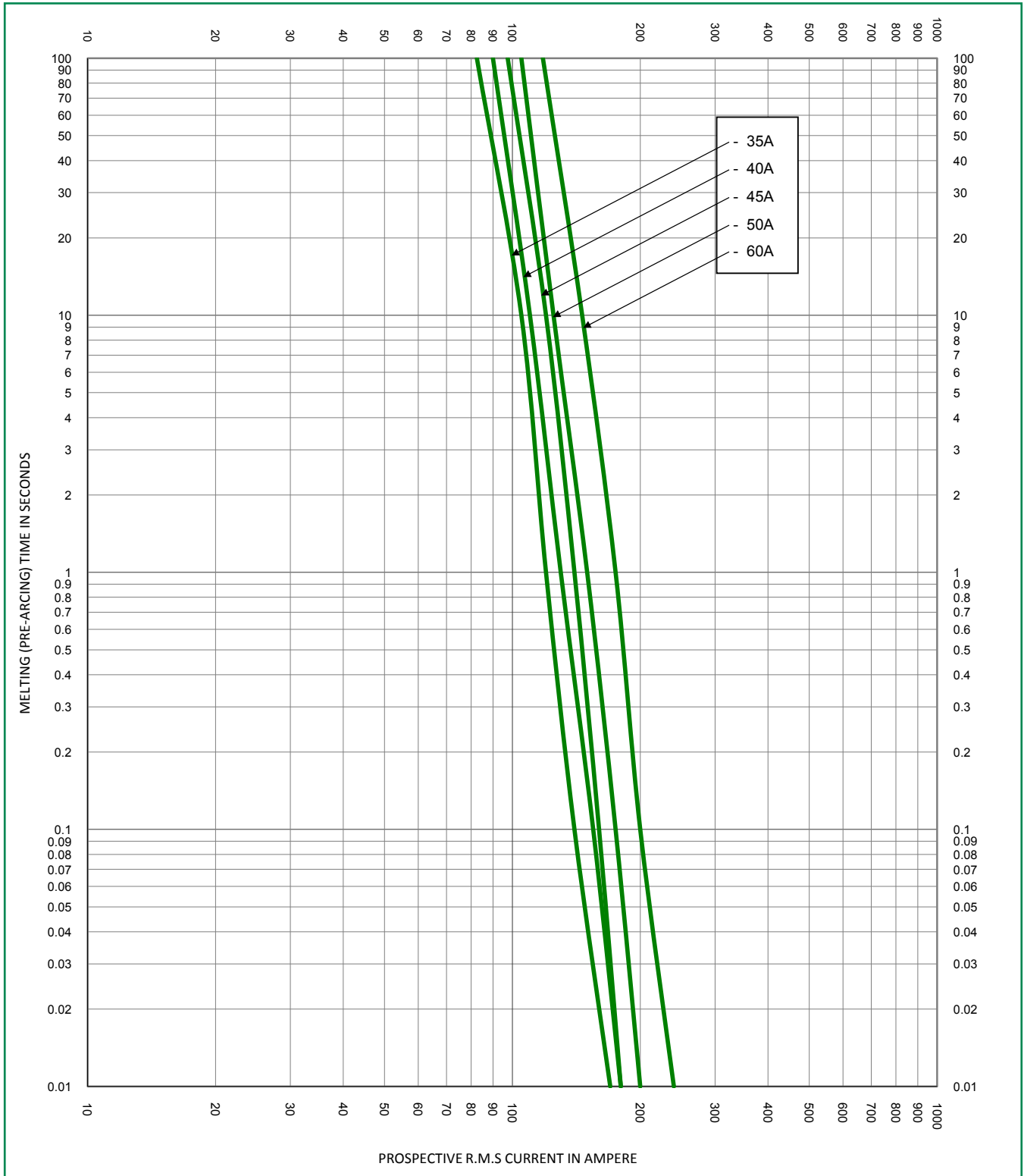
Figure 2

Note: High-Speed fuses are designed for fixed installations. They are not intended for use in moving vehicle applications.

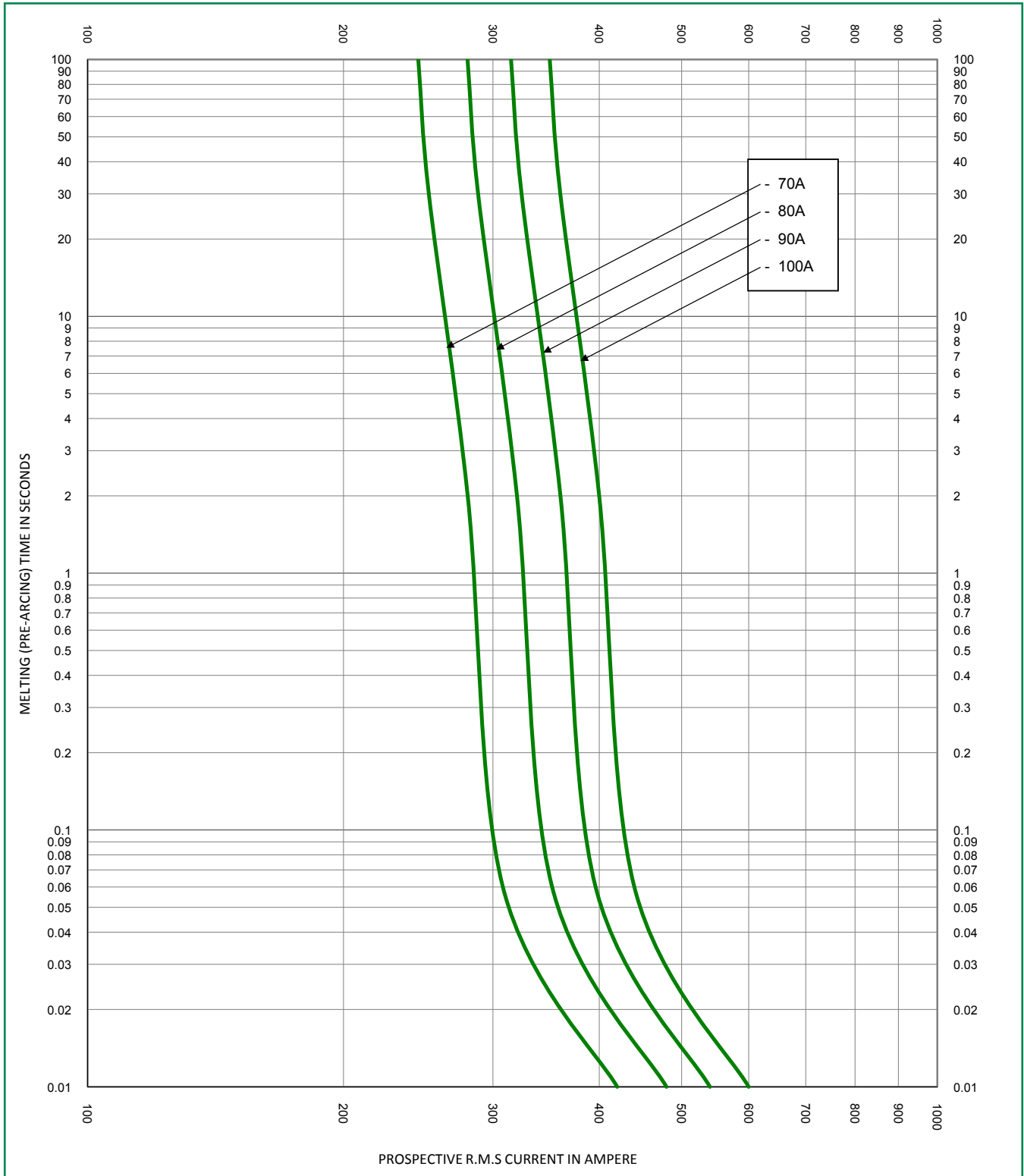
Time Current Curve



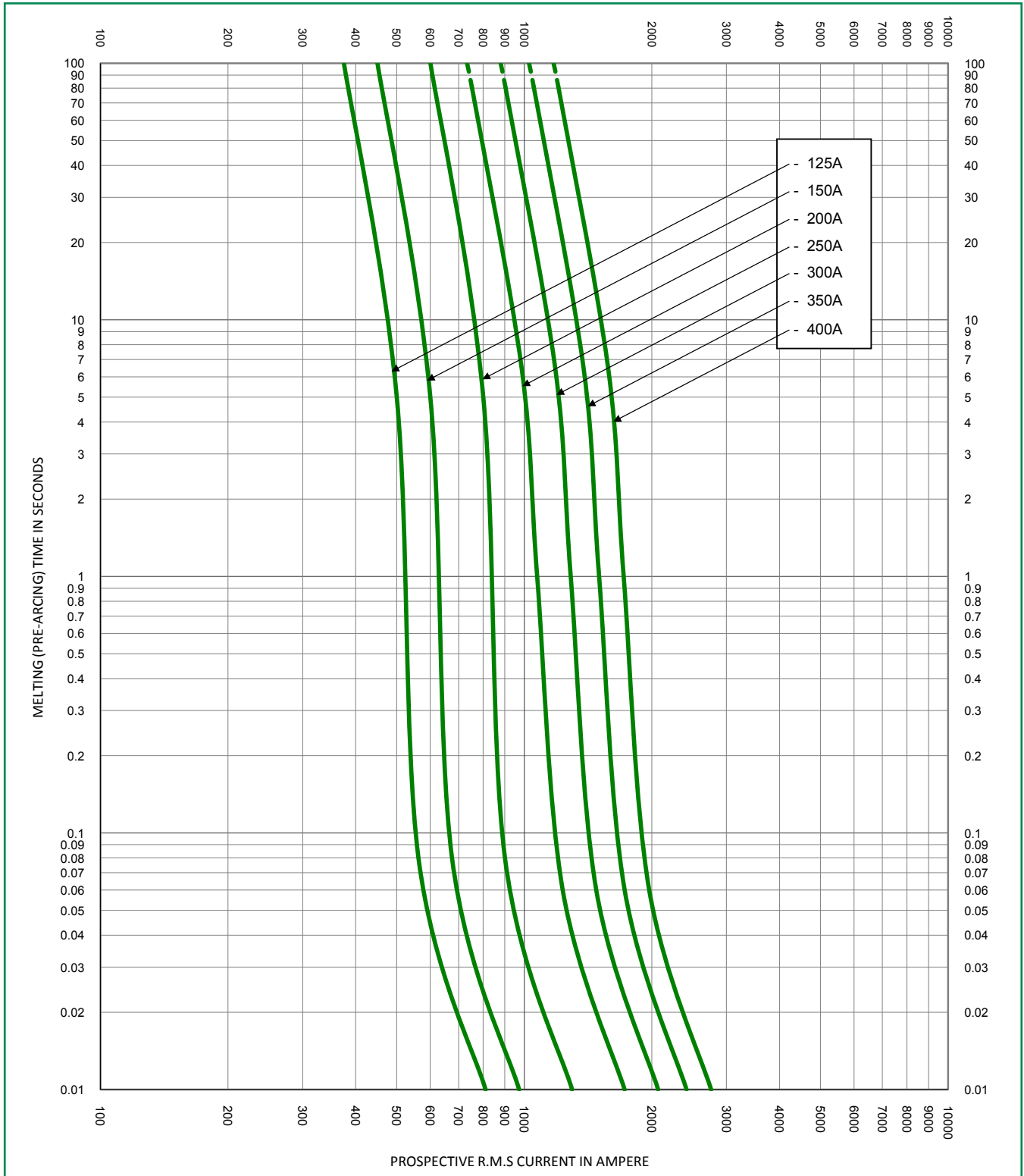
Time Current Curve



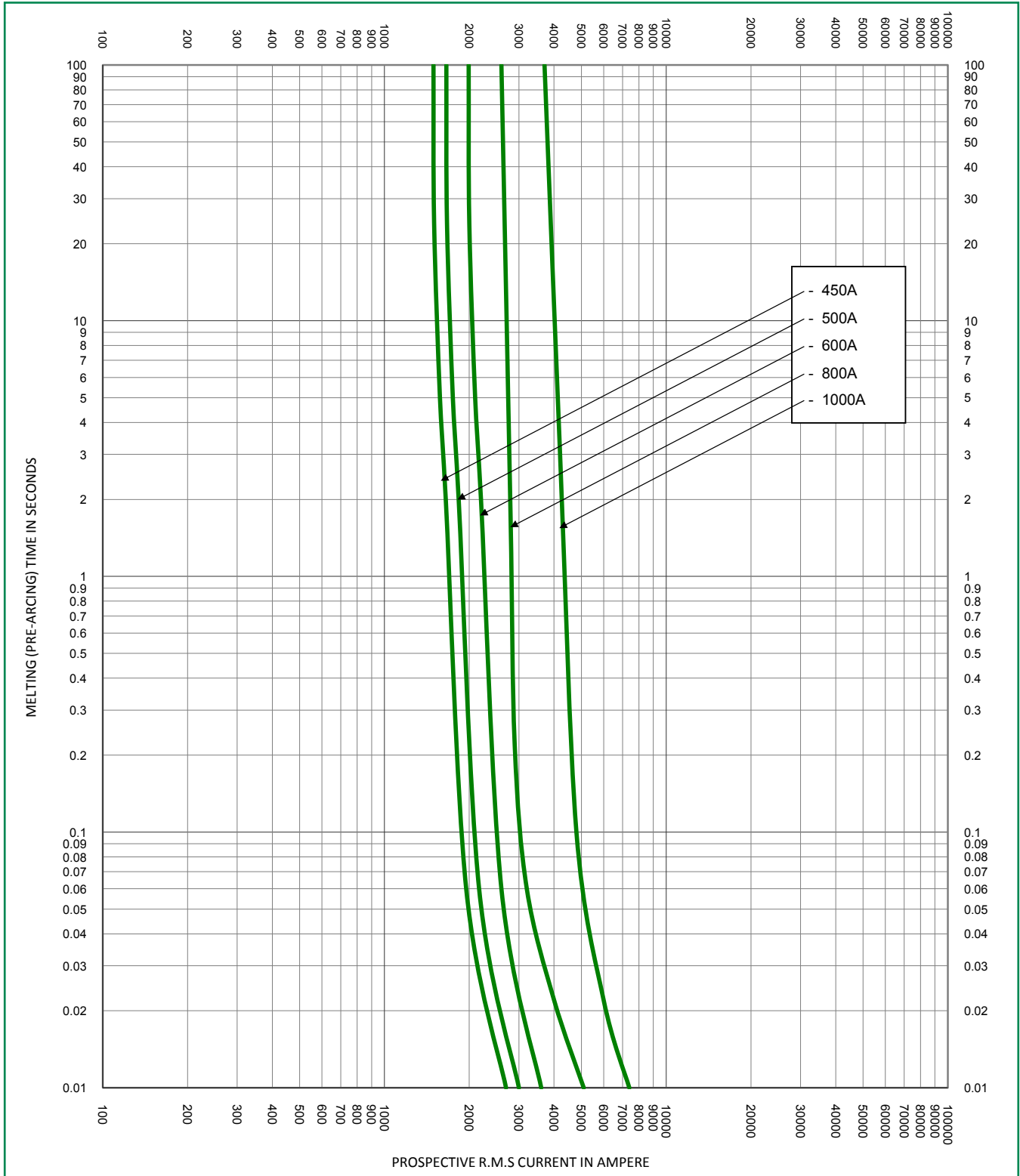
Time Current Curve



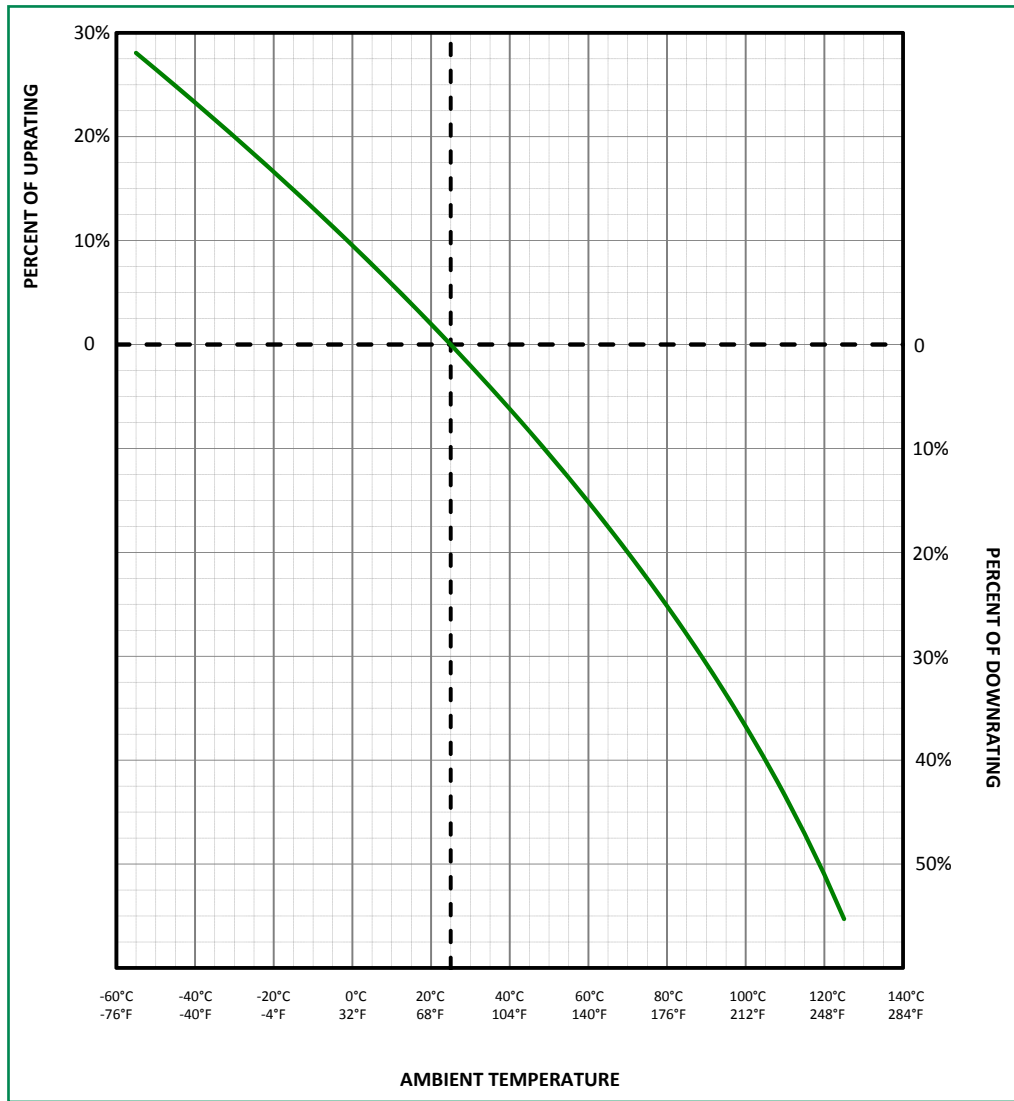
Time Current Curve



Time Current Curve



Temperature De-rating Curve (Temperature of Air Immediately Surrounding Fuse)



Disclaimer Notice – Littelfuse products are not designed for, and shall not be used for, any purpose (including, without limitation, automotive, military, aerospace, medical, life-saving, life-sustaining or nuclear facility applications, devices intended for surgical implant into the body, or any other application in which the failure or lack of desired operation of the product may result in personal injury, death, or property damage) other than those expressly set forth in applicable Littelfuse product documentation. Warranties granted by Littelfuse shall be deemed void for products used for any purpose not expressly set forth in applicable Littelfuse documentation. Littelfuse shall not be liable for any claims or damages arising out of products used in applications not expressly intended by Littelfuse as set forth in applicable Littelfuse documentation. The sale and use of Littelfuse products is subject to Littelfuse Terms and Conditions of Sale, unless otherwise agreed by Littelfuse.

Littelfuse.com/Product-Disclaimer



Компания «ЭлектроПласт» предлагает заключение долгосрочных отношений при поставках импортных электронных компонентов на взаимовыгодных условиях!

Наши преимущества:

- Оперативные поставки широкого спектра электронных компонентов отечественного и импортного производства напрямую от производителей и с крупнейших мировых складов;
- Поставка более 17-ти миллионов наименований электронных компонентов;
- Поставка сложных, дефицитных, либо снятых с производства позиций;
- Оперативные сроки поставки под заказ (от 5 рабочих дней);
- Экспресс доставка в любую точку России;
- Техническая поддержка проекта, помощь в подборе аналогов, поставка прототипов;
- Система менеджмента качества сертифицирована по Международному стандарту ISO 9001;
- Лицензия ФСБ на осуществление работ с использованием сведений, составляющих государственную тайну;
- Поставка специализированных компонентов (Xilinx, Altera, Analog Devices, Intersil, Interpoint, Microsemi, Aeroflex, Peregrine, Syfer, Eurofarad, Texas Instrument, Miteq, Cobham, E2V, MA-COM, Hittite, Mini-Circuits, General Dynamics и др.);

Помимо этого, одним из направлений компании «ЭлектроПласт» является направление «Источники питания». Мы предлагаем Вам помощь Конструкторского отдела:

- Подбор оптимального решения, техническое обоснование при выборе компонента;
- Подбор аналогов;
- Консультации по применению компонента;
- Поставка образцов и прототипов;
- Техническая поддержка проекта;
- Защита от снятия компонента с производства.



Как с нами связаться

Телефон: 8 (812) 309 58 32 (многоканальный)

Факс: 8 (812) 320-02-42

Электронная почта: org@eplast1.ru

Адрес: 198099, г. Санкт-Петербург, ул. Калинина, дом 2, корпус 4, литера А.