



# DEM0908JL16

# STARTERKIT

Demonstration Board  
for Freescale  
MC68HC908JL16  
Family

## User's Manual



*Development Tools  
for the EmbeddedWorld*



# DEMO908JL16

## Demonstration Board for Freescale MC68HC908JL16 Family (32-Pin SDIP)

### User's Manual

Revision 1.0



*Development Tools  
for the EmbeddedWorld*

Copyright © 2006 SofTec Microsystems®

DC01037

***We want your feedback!***

*SofTec Microsystems is always on the look-out for new ways to improve its Products and Services. For this reason feedback, comments, suggestions or criticisms, however small, are always welcome.*



Our policy at SofTec Microsystems is to comply with all applicable worldwide safety and EMC/EMI regulations. Our products are certified to comply to the European New Approach Directives and the CE mark is applied on all our products.

**SofTec Microsystems**

E-mail (general information): [info@softecmicro.com](mailto:info@softecmicro.com)

E-mail (marketing department): [marketing@softecmicro.com](mailto:marketing@softecmicro.com)

E-mail (technical support): [support@softecmicro.com](mailto:support@softecmicro.com)

Web: <http://www.softecmicro.com>

---

**Important**

SofTec Microsystems reserves the right to make improvements to the inDART-One In-Circuit Programmer/Debugger, its documentation and software routines, without notice. Information in this manual is intended to be accurate and reliable. However, SofTec Microsystems assumes no responsibility for its use; nor for any infringements of rights of third parties which may result from its use.

SOFTEC MICROSYSTEMS WILL NOT BE LIABLE FOR DAMAGES RESULTING FROM LOSS OF DATA, PROFITS, USE OF PRODUCTS, OR INCIDENTAL OR CONSEQUENTIAL DAMAGES, EVEN IF ADVISED OF THE POSSIBILITY THEREOF.

**Trademarks**

SofTec Microsystems is a registered trademark of SofTec Microsystems, Spa.

Freescale™ and the Freescale logo are trademarks of Freescale Semiconductor, Inc.

Microsoft and Windows are trademarks or registered trademarks of Microsoft Corporation.

PC is a registered trademark of International Business Machines Corporation.

Other products and company names listed are trademarks or trade names of their respective companies.

# Contents

## **1 Introduction 5**

- 1.1 Overview 5
- 1.2 Package Contents 5
- 1.3 Supported Devices 5
- 1.4 Recommended Reading 5
- 1.5 Getting Technical Support 6

## **2 Hardware Features 7**

- 2.1 Demonstration Board Features 7

## **3 Software Setup 9**

- 3.1 Overview 9
- 3.2 Host System Requirements 9
- 3.3 Installing CodeWarrior Development Studio 9
- 3.4 Installing SofTec Microsystems Additional Components 10

## **4 Hardware Setup 11**

- 4.1 First Connection 11
- 4.2 Power Supply 13

## **5 Operating Modes 15**

- 5.1 Overview 15
- 5.2 Standalone Mode 15
- 5.3 Host Mode 15

## **6 Application Tutorial 17**

- 6.1 Overview 17
- 6.2 Step-by-Step Tutorial 17

## **7 Summary of Jumper and Connector Settings 19**

- 7.1 Jumpers 19
- 7.2 Connectors 20

## **8 Troubleshooting 25**

- 8.1 USB Driver Problems 25



# 1 Introduction

## 1.1 Overview

The DEMO908JL16 Demonstration board has been designed for the evaluation, demonstration and the debugging of the Freescale MC68HC908JL16 microcontroller.

The DEMO908JL16 can be used as a standalone application, or via its built-in USB-to-MON08 bridge, or together the Freescale Student Learning Kit (Freescale code: MCUSLK) through an external 28-pin I/O Header female connector.

## 1.2 Package Contents

The DEMO908JL16 package includes the following items:

- The DEMO908JL16 evaluation board;
- A USB cable;
- The SofTec Microsystems "System Software" CD-ROM;
- The CodeWarrior Development Studio Special Edition CD-ROM;
- This user's manual.

## 1.3 Supported Devices

The DEMO908JL16 Demonstration Board supports the following devices:

- MC68HC908JL16 family;
- And any future pin-to-pin compatible device.

## 1.4 Recommended Reading

- Freescale HC08 microcontroller-specific datasheets;
- DEMO908JL16 Schematic.

## 1.5 Getting Technical Support

Technical assistance is provided to all customers. For technical assistance, documentation and information about products and services, please refer to your local SofTec Microsystems partner.

SofTec Microsystems offers its customers a technical support service at *support@softecmicro.com*.



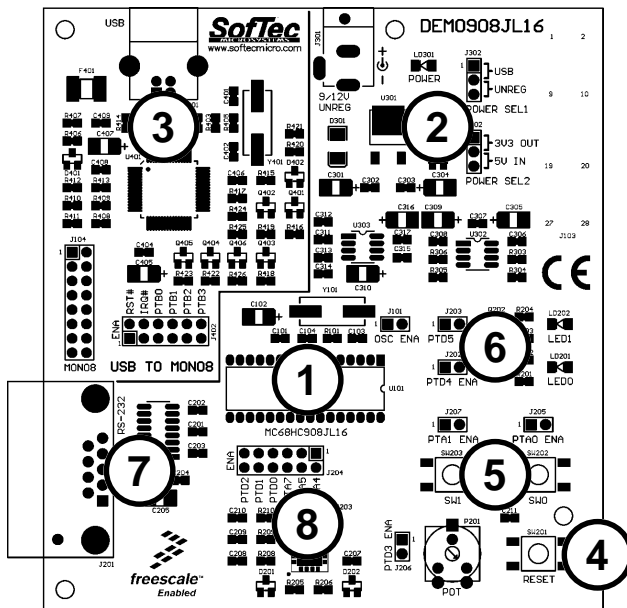
## 2 Hardware Features

### 2.1 Demonstration Board Features

The DEMO908JL16 board features:

1. An MCU section containing:
  - An MC68HC908JL16 microcontroller (in 32-pin SDIP package, already programmed with a demo application—in addition, you can also use any other pin-to-pin-compatible device);
  - One clock sources: a 9.8304 MHz crystal, selectable via the “OSC ENA” jumper.
2. A power supply section containing:
  - A 12 V DC Power Supply Input Connector;
  - Power input selection jumpers for selecting the input voltage input source:
    - 12 V DC input connector;
    - USB connector;
    - I/O header connector.
3. A built-in “USB TO MON08” section which allows the host PC to communicate with the microcontroller through a standard USB interface. USB 2.0 is fully supported. When using an external in-circuit debugger (via the “MON08” connector), the “USB TO MON08” circuitry must be bypassed by removing all of the J402 jumpers.
4. A Reset section containing a Reset push-button connected to the MCU Reset pin.
5. An input section containing:
  - Two push-buttons together with jumpers to connect/disconnect them to/from the PTA0 and PTA1 pins of the microcontroller;
  - A potentiometer, together with a jumper to connect/disconnect it to/from the PTD3/ADC8 pin of the microcontroller.
6. An output section containing two high-efficiency (low-current) LEDs together with two jumpers to connect/disconnect them to/from the PTD4 and PTD5 pins of the microcontroller.

7. An RS-232 section providing one RS-232 channel connected to the microcontroller's SCI serial communication interface. The microcontroller's PTD6/TxD and PTD7/RxD lines are used by the RS-232 channel.
8. An accelerometer section featuring a Freescale MMA7260Q sensor. All of the sensor's input/output lines are connected to the microcontroller via jumpers.



The DEMO908JL16 Demonstration Board

## 3 Software Setup

### 3.1 Overview



**Note:** *before connecting the Demonstration Board to the PC, it is recommended that you install all of the required software first (see below), so that the appropriate USB driver will be automatically found by Windows when you connect the Demonstration Board.*

The Demonstration Board requires that both CodeWarrior Development Studio Special Edition and SofTec Microsystems Additional Components be installed in the host PC.



**Note:** *CodeWarrior Development Studio for HC(S)08 must be installed first.*

### 3.2 Host System Requirements

The Demonstration Board is controlled by CodeWarrior Development Studio. The following hardware and software are required to run the CodeWarrior user interface together with the Demonstration Board:

- A 200-MHz (or higher) PC compatible system running Windows 98, Windows 2000 or Windows XP;
- 128 MB of available system RAM plus 1 GB of available hard disk space;
- A USB port;
- CD-ROM drive for installation.

### 3.3 Installing CodeWarrior Development Studio

To install the CodeWarrior Development Studio Special Edition, insert the CodeWarrior CD-ROM into your computer's CD-ROM drive. A startup window will automatically appear. Follow the on-screen instructions.

### 3.4 Installing SofTec Microsystems Additional Components

The SofTec Microsystems Additional Components install all of the other required components to your hard drive. These components include:

- The Demonstration Board's USB driver;
- The software plug-in for CodeWarrior;
- Examples;
- Demonstration Board's user's manual;
- Demonstration Board's schematic;
- Additional documentation.

To install the SofTec Microsystems Additional Components, insert the SofTec Microsystems **"System Software"** CD-ROM into your computer's CD-ROM drive. A startup window will automatically appear. Choose **"Install Instrument Software"** from the main menu. A list of available software will appear. Click on the **"Additional Components"** option. Follow the on-screen instructions.



**Note:** *to install the Additional Components on Windows 2000 or Windows XP, you must log in as Administrator.*

## 4 Hardware Setup

### 4.1 First Connection

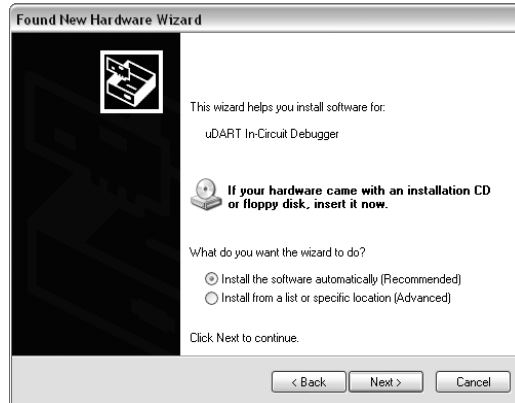
The Demonstration Board is connected to a host PC through a USB port. Connection steps are listed below in the recommended flow order:

1. Install all the required system software as described in the previous section.
2. Make sure the “POWER SEL1” jumper is in the “USB” position.
3. Insert one end of the USB cable into a free USB port.
4. Insert the other end of the USB cable into the USB connector on the Demonstration Board.
5. The first time the Demonstration Board is connected to the PC, Windows recognizes the instrument and starts the “**Found New Hardware Wizard**” procedure, asking you to specify the driver to use for the instrument. On Windows XP (SP2) the following dialog box will appear.



Select the “**No, not this time**” option and click the “**Next >**” button.

6. The following dialog box will appear.



Click the “**Next >**” button.

7. Depending on your Windows settings, the following warning may appear.



**Note:** *this warning is related to the fact that the USB driver used by the Demonstration Board is not digitally signed by Microsoft, and Windows considers it to be potentially malfunctioning or dangerous for the system. However, you can safely ignore the warning, since every kind of compatibility/security test has been carried out by SofTec Microsystems.*

Click the “**Continue Anyway**” button.

8. Windows will install the driver files to your system. At the end of the installation, the following dialog box will appear.



Click the **“Finish”** button to exit from the **“Found New Hardware Wizard”** procedure.

9. The Demonstration Board's USB driver is now installed on your system.

## 4.2 Power Supply

The Demonstration Board can be powered in three ways:

- 12 V DC input connector;
- USB connector;
- I/O header connector.

Two jumpers (“POWER SEL1” and “POWER SEL2”) specify which power source to use. These two jumpers work together, as detailed in the table below. Care must be taken in setting these jumpers appropriately. Please refer to the following table for details.

"POWER SEL1"	"POWER SEL2"	Configuration Selected
"USB"	"3V3 OUT"	Power supply taken from the USB connector. 3.3 V supplied to the pin 1 of the I/O header (J103). Default configuration.
	"5V IN"	*** <b>Forbidden.</b> ***
	Removed	Power supply taken from the USB connector.
"UNREG"	"3V3 OUT"	Power supply taken from the power supply connector (J301). 3.3 V supplied to the pin 1 of the I/O header (J103).
	"5V IN"	*** <b>Forbidden.</b> ***
	Removed	Power supply taken from the power supply connector (J301).
Removed	"3V3 OUT"	*** <b>Forbidden.</b> ***
	"5V IN"	Power supply taken from the pin 1 of the I/O header (J103).
	Removed	*** <b>Forbidden.</b> ***



# 5 Operating Modes

## 5.1 Overview

The Demonstration Board can work in two modes: “standalone” mode and “host” mode.

## 5.2 Standalone Mode

In standalone mode, no PC connection is required. The microcontroller is factory programmed with a sample application.

To run the built-in example:

- Ensure that the “OSC ENA”, “PTD5 ENA”, “PTD4 ENA”, “PTD3 ENA”, “PTA1 ENA” and “PTA0 ENA” jumpers are inserted.
- Ensure that all of the accelerometer enable jumpers (“PDT2”, “PTD1”, “PTD0”, “PTA7”, “PTA5” and “PTA4”) are inserted.
- Power on the Demonstration Board through either the 12 V DC plug-in power supply or the 28-pin I/O Header connector, and make sure that the “POWER SEL1” and “POWER SEL2” jumpers select the appropriate power source (see chapter “4.2 Power Supply” for details).
- The green “POWER” LED on the board should turn on.
- Press the “SW0” push-button. Then, by rotating the potentiometer, you affect the results of the A/D conversion, which in turn varies the blinking frequency of the “LED1” and “LED2” LEDs.
- Press the “SW1” push-button. Then, by rotating the board around its x, y or z axes, you affect the accelerometer reading along that axis, and the “LED1” and “LED2” LEDs turn on, off or blink depending on the board's position.

## 5.3 Host Mode

In host mode the program execution is controlled by the host PC through the “USB” connector. You can use the PC to debug the application by, for example, executing the program step by step and watching how the microcontroller registers vary, using the provided CodeWarrior Development Studio.



**Note:** *all of the HC08 family devices feature a monitor code resident in ROM which, through a serial communication line, allows the programming and the in-circuit debugging of the user application. The monitor code is executed in "monitor mode"; the user application is executed in "user mode". To enter the monitor mode some microcontroller lines must be properly driver (for further details please refer to the microcontroller's data sheet).*

*The USB TO MON08 INTERFACE section groups the circuitry needed to generate the required signals to enter the monitor mode and communicate with the host PC's USB port. In particular, to enter the monitor mode, the "USB TO MON08 INTERFACE" circuitry:*

- *Generates a high-level voltage signal (VTST) on the IRQ pin of the microcontroller;*
- *Generates a high-level voltage and an appropriate reset signal on the RST pin of the microcontroller;*
- *Drives the microcontroller's VDD on and off, with specific timing, in order to enter the monitor mode;*
- *Handles a single-wire, bi-directional serial communication line on a specific pin of the microcontroller.*

To work in host mode (using the built-in USB to MON08 interface):

- Make sure that all of the jumpers in the "USB to MON08" section are inserted.
- Make sure that the "POWER SEL1" jumper is in the "USB" position.
- Connect the host PC to the board through the provided USB cable.

# 6 Application Tutorial

## 6.1 Overview

This section will provide a step-by-step guide on how to launch your first project and get started with the CodeWarrior for HC(S)08 user interface.

## 6.2 Step-by-Step Tutorial

The sample application is the same as the one described in the “*Standalone Mode*” section above.

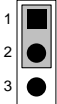
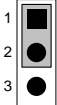




1. Ensure that the Demonstration Board is connected to the PC (via the USB cable) and that the board is powered.
2. Make sure that all of the Demonstration Board jumpers are set to their factory position (see chapter “7.1 Jumpers” for details)
3. Start CodeWarrior for HC(S)08 Development Studio by selecting it in the Windows Start menu.
4. From the CodeWarrior main menu, choose “**File > Open**”. Select the “**Demo.mcp**” workspace file that is located under the “**\Program Files\SofTec Microsystems\DEMO908JL16\CodeWarrior Examples\C\Demo**” directory. Click “**Open**”. The *Project Window* will open.
5. The C code of this example is contained in the “**main.c**” file. Double click on it to open it.
6. From the main menu, choose “**Project > Debug**”. This will compile the source code, generate an executable file and download it to the demo board.
7. A new debugger environment will open. From the main menu, choose “**Run > Start/Continue**”. The program will be executed in real-time.
8. From the main menu, choose “**Run > Halt**”. The program execution will stop. The next instruction to be executed is highlighted in the *Source* window.
9. From the main menu, choose “**Run > Single Step**”. The instruction highlighted in the *Source* window will be executed, and the program execution will be stopped immediately after.
10. From the main menu, choose “**Run > Start/Continue**”. The application will restart from where it was previously stopped.



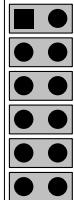
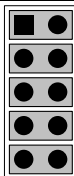
Congratulations! You have successfully completed this tutorial! You can continue to experiment with the CodeWarrior user interface and discover by yourself its potentialities. For an in-depth guide of all of the user interface features, select “**Help > CodeWarrior Help**” from CodeWarrior Development Studio’s main menu.




## 7 Summary of Jumper and Connector Settings

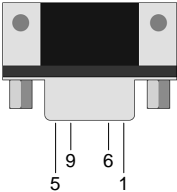

### 7.1 Jumpers

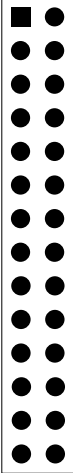
Name	Reference	Description/Pinout
J302		See chapter "4.2 Power Supply" for details
J102		
J101		<b>OSCILLATOR ENABLE</b>  <b>Installed:</b> On-board crystal selected (default) <b>Not Installed:</b> Clock provided by an external oscillator
J205		<b>SW0 PUSH-BUTTON ENABLE</b>  <b>Installed:</b> The SW0 push-button is connected to the microcontroller's PTA0 input (default) <b>Not Installed:</b> The SW0 push-button is not connected to the microcontroller
J207		<b>SW1 PUSH-BUTTON ENABLE</b>  <b>Installed:</b> The SW1 push-button is connected to the microcontroller's PTA1 input (default) <b>Not Installed:</b> The SW1 push-button is not connected to the microcontroller
J206		<b>POTENTIOMETER ENABLE</b>  <b>Installed:</b> The potentiometer is connected to the microcontroller's PTD3/ADC8 analog input (default) <b>Not Installed:</b> The potentiometer is not connected to the microcontroller

Name	Reference	Description/Pinout
J202		<b>LED0 ENABLE</b>  <b>Installed:</b> The LED0 is connected to the PTD4 port of the microcontroller (default) <b>Not Installed:</b> The LED0 is not connected to the microcontroller
J203		<b>LED1 ENABLE</b>  <b>Installed:</b> The LED1 is connected to the PTD5 port of the microcontroller (default) <b>Not Installed:</b> The LED1 is not connected to the microcontroller
J204	1 	<b>ACCELEROMETER ENABLE</b>  <b>All installed:</b> The accelerometer is interface with the microcontroller(default)  PTA4 = g-Select1 PTA5 = g-Select2 PTA7 = Sleep Mode# PTD0 = Xout PTD1 =Yout PTD2 =Zout  <b>None installed:</b> The accelerometer is not interfaced with the microcontroller
J402	1 	<b>USB TO MON08 ENABLE</b>  <b>All installed:</b> The USB to MON08 interface is enabled (default) <b>Not Installed:</b> The USB to MON08 interface is disabled

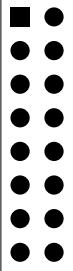
## 7.2 Connectors

Name	Reference	Description/Pinout
J301	2—●—1 	<b>9-12 V DC Power Supply Input Connector</b>  1. 12 V DC 2. Ground

Name	Reference	Description/Pinout
J201		<b>RS-232 Connector</b>  <ul style="list-style-type: none"><li>1. N.C.</li><li>2. TX</li><li>3. RX</li><li>4. N.C.</li><li>5. GND</li><li>6. N.C.</li><li>7. N.C.</li><li>8. N.C.</li><li>9. N.C.</li></ul>
J401		<b>USB Connector</b>  <ul style="list-style-type: none"><li>1. 5 V DC USB Bus Power Supply Line</li><li>2. USB D-</li><li>3. USB D+</li><li>4. GND</li></ul>

Name	Reference	Description/Pinout
J103		<b>28-Pin I/O Header Female Connector</b> <ol style="list-style-type: none"> <li>VDD (see chapter "4.2 Power Supply" for details)</li> <li>IRQ#</li> <li>VSS</li> <li>RST#</li> <li>PTD6/TxD/SCL</li> <li>PTB0/ADC0</li> <li>PTD7/RxD/SDA</li> <li>PTB1/ADC1</li> <li>PTA0/KBI0</li> <li>PTB2/ADC2</li> <li>PTA1/KBI1</li> <li>PTB3/ADC3</li> <li>PTD4/T1CH0</li> <li>PTB4/ADC4</li> <li>PTD5/T1CH1</li> <li>PTB5/ADC5</li> <li>PTD0/ADC11</li> <li>PTB6/ADC6</li> <li>PTD1/ADC10</li> <li>PTB7/ADC7</li> <li>PTD2/ADC9</li> <li>PTA4/KBI4</li> <li>PTD3/ADC8</li> <li>PTA5/KBI5</li> <li>PTE0/T2CH0</li> <li>PTA2/KBI2/SDA</li> <li>PTE1/T2CH1</li> <li>PTA3/KBI3/SCL</li> </ol>



Name	Reference	Description/Pinout
J104		<b>MON08 Connector (Not Populated)</b>  1. N.C. 2. VSS 3. N.C. 4. RST# 5. N.C. 6. IRQ# 7. N.C. 8. N.C. 9. N.C. 10. PTB0/ADC0 11. N.C. 12. PTB1/ADC1 13. OSC1 14. PTB2/ADC2 15. VDD 16. PTB3/ADC3



# 8 Troubleshooting

## 8.1 USB Driver Problems

If you connected the Demonstration Board to the PC before installing the SofTec Microsystems Additional Components, the Demonstration Board's USB driver may not have been correctly installed on your system. Unplugging and replugging the USB cable is of no use, since Windows has marked the device as "disabled". As a consequence, the PC cannot communicate with the Demonstration Board.

To restore the USB driver (provided the SofTec Microsystems Additional Components have been installed), perform the following steps under Windows XP:

1. Connect the Demonstration Board to the PC.
2. Open the Control Panel (**Start > Settings > Control Panel**).
3. Open the "**System**" options.
4. Select the "**Hardware**" tab.
5. Click the "**Device Manager**" button.
6. The "**uDART In-Circuit Debugger**" device will be shown with an exclamation mark next to it. Double click on this device.
7. In the "**General**" tab, click the "**Reinstall Driver**" button. Follow the on-screen instructions.















Компания «ЭлектроПласт» предлагает заключение долгосрочных отношений при поставках импортных электронных компонентов на взаимовыгодных условиях!

Наши преимущества:

- Оперативные поставки широкого спектра электронных компонентов отечественного и импортного производства напрямую от производителей и с крупнейших мировых складов;
- Поставка более 17-ти миллионов наименований электронных компонентов;
- Поставка сложных, дефицитных, либо снятых с производства позиций;
- Оперативные сроки поставки под заказ (от 5 рабочих дней);
- Экспресс доставка в любую точку России;
- Техническая поддержка проекта, помощь в подборе аналогов, поставка прототипов;
- Система менеджмента качества сертифицирована по Международному стандарту ISO 9001;
- Лицензия ФСБ на осуществление работ с использованием сведений, составляющих государственную тайну;
- Поставка специализированных компонентов (Xilinx, Altera, Analog Devices, Intersil, Interpoint, Microsemi, Aeroflex, Peregrine, Syfer, Eurofarad, Texas Instrument, Miteq, Cobham, E2V, MA-COM, Hittite, Mini-Circuits, General Dynamics и др.);

Помимо этого, одним из направлений компании «ЭлектроПласт» является направление «Источники питания». Мы предлагаем Вам помощь Конструкторского отдела:

- Подбор оптимального решения, техническое обоснование при выборе компонента;
- Подбор аналогов;
- Консультации по применению компонента;
- Поставка образцов и прототипов;
- Техническая поддержка проекта;
- Защита от снятия компонента с производства.



#### Как с нами связаться

**Телефон:** 8 (812) 309 58 32 (многоканальный)

**Факс:** 8 (812) 320-02-42

**Электронная почта:** [org@eplast1.ru](mailto:org@eplast1.ru)

**Адрес:** 198099, г. Санкт-Петербург, ул. Калинина, дом 2, корпус 4, литера А.