



One Technology Way, P.O. Box 9106, Norwood, MA 02062-9106, U.S.A.  
Tel: 781.329.4700 [www.analog.com](http://www.analog.com)  
Fax: 781.461.3113 ©2006–2007 Analog Devices, Inc. All rights reserved.

TABLE OF CONTENTS

Features .....	1	Software Operation .....	5
Description .....	1	Evaluation Board Schematics.....	7
Revision History .....	2	Ordering Information.....	11
Hardware Description.....	3	Component Listing .....	11
Power Supplies .....	3	Ordering Guide .....	12
Link Options .....	3	ESD Caution.....	12
Evaluation Board Software .....	5		
Software Installation .....	5		

REVISION HISTORY

<b>8/07—Rev. 0 to Rev. A</b>	
Changes to Figure 1.....	1
Changes to Table 4.....	11
Changes to Ordering Guide .....	12
<b>7/06—Revision 0: Initial Version</b>	

## HARDWARE DESCRIPTION

### POWER SUPPLIES

The EVAL-ADG2128EBZ can be operated with both single and dual supplies. The device is specified to operate in single-supply mode at  $12\text{ V} \pm 10\%$  and  $8\text{ V} \pm 10\%$  operation. It is also specified to operate at  $\pm 5\text{ V}$  dual supply. The following details how these supplies are applied to the evaluation board:

- $V_L$  provides the digital supply for the ADG2128 and all digital circuitry on the board. This supply can be applied externally, or the USB port can be used to power the digital circuitry (with Link 5 inserted). In this case, the logic supply power is 3.3 V.
- Connect 8 V/12 V between the AVDD and AGND inputs for the positive analog supply ( $V_{DD}$ ) of the ADG2128. Note that the maximum single supply that the chip can handle is 15 V. In this case,  $AV_{SS}$  must equal 0 V. In the case of an 8 V or 12 V supply, negative voltage can be applied to  $AV_{SS}$  if  $V_{DD}$  to  $V_{SS}$  is a maximum of 15 V.
- Connect  $-5\text{ V}$  between the  $AV_{SS}$  and AGND inputs for the negative supply ( $V_{SS}$ ) of the ADG2128.

Both AGND and DGND inputs are provided on the board. The AGND and DGND planes are connected at one location close to the ADG2128. It is recommended not to connect AGND and DGND elsewhere in the system to avoid ground loop problems.

Each supply is decoupled to the relevant ground plane with  $10\text{ }\mu\text{F}$  and  $0.1\text{ }\mu\text{F}$  capacitors. Each device supply pin is also decoupled with a  $10\text{ }\mu\text{F}$  and a  $0.1\text{ }\mu\text{F}$  capacitor pair to the relevant ground plane.

### LINK OPTIONS

There are a number of link and switch options on the evaluation board that should be set for the required operating setup before using the board. The link option functions are described in Table 1.

**Table 1. Link Options**

Link No.	Function
LK1	This link is for choosing the LSB bit of the address of the chip on the USB I <sup>2</sup> C interface. Note that the I <sup>2</sup> C address should be set before the evaluation software is launched. When this link is inserted, the address bit is set to 0. When this link is removed, the address bit is set to 1.
LK2	This link is for choosing the second LSB bit of the address of the chip on the USB I <sup>2</sup> C interface. Note that the I <sup>2</sup> C address should be set before the evaluation software is launched. When this link is inserted, the address bit is set to 0. When this link is removed, the address bit is set to 1.
LK3	This link is for choosing the third LSB bit of the address of the chip on the USB I <sup>2</sup> C interface. Note that the I <sup>2</sup> C address should be set before the evaluation software is launched. When this link is inserted, the address bit is set to 0. When this link is removed, the address bit is set to 1.
LK4	This link selects whether the supply at $V_{SS}$ is sourced from ground or from the input $AV_{SS}$ . If it is sourced from ground, it is a single-supply system. Position A— $V_{SS}$ sourced from $AV_{SS}$ . Position B— $V_{SS}$ sourced from ground.
LK5	This link selects if the logic supply power is from the USB power (when connected to a PC) or from the user-supplied $V_L$ (when used as a standalone unit). When this link is inserted, the logic power supply is from the USB power. When this link is removed, the logic power supply is from the user-supplied $V_L$ .

# EVAL-ADG2128EBZ

## Link Setup Options for PC Control

The default setup for the EVAL-ADG2128EBZ is to be controlled by the PC via the USB port. The default link options are listed in Table 2.

**Table 2. Default Link Options**

Link No.	Option
LK1	Inserted—the LSB is 0.
LK2	Inserted—the second LSB is 0.
LK3	Inserted—the third LSB is 0.
LK4	Position A—AV <sub>SS</sub> is supplying the power to V <sub>SS</sub> .
LK5	Inserted—the logic power supply is from USB power.

## Link Setup Options for Control Without a PC

The EVAL-ADG2128EBZ can also be used as a standalone board. This option is for PC users who do not have a USB port or for users wishing to hook up the board to their entire system.

Table 3 lists the link options that must be set to operate the evaluation board in this way.

**Table 3. Link Setup Options for Control Without a PC**

Link No.	Option
LK1	User configurable—does not affect whether the board is connected to a PC or not.
LK2	User configurable—does not affect whether the board is connected to a PC or not.
LK3	User configurable—does not affect whether the board is connected to a PC or not.
LK4	User configurable—does not affect whether the board is connected to a PC or not.
LK5	Removed

Switches are turned on and off via the I<sup>2</sup>C bus. The read/write procedures are provided in the [ADG2128](#) data sheet and should be consulted when using this evaluation board in its standalone mode.

## EVALUATION BOARD SOFTWARE

The ADG2128 evaluation kit includes self-installing software on the CD-ROM. The software is compatible with Windows® 2000 and Windows XP. The evaluation software should be installed before connecting the evaluation board to the PC's USB port. This ensures that the evaluation board is correctly recognized when connected to the PC.

### SOFTWARE INSTALLATION

To install the software

1. Start Windows and insert the CD. The installation software should launch automatically. If it does not, use Windows Explorer to locate the file **setup.exe** on the CD. Double-click this file to start the installation procedure.
2. At the prompt, select a destination directory. By default, it is **C:\Program Files\Analog Devices\ADG2128**.

After the directory is selected, the installation procedure copies the files into the relevant directories on the hard drive. The installation program creates a program group called **Analog Devices** with a subgroup called **ADG2128** in the **Start** menu of the taskbar.

3. After the installation procedure is complete, power up the ADG2128 evaluation board as described in the Hardware Description section. Then, connect it to the USB port of the PC using the supplied cable.
4. Double-click the **ADG2128** icon to start the program. The evaluation board is then automatically detected. Proceed through any dialog boxes that may appear to finalize the installation.

### SOFTWARE OPERATION

To launch the software, click **Start > All Programs > Analog Devices > ADG2128 > ADG2128 Evaluation Software**. Figure 2 displays the main dialog box.

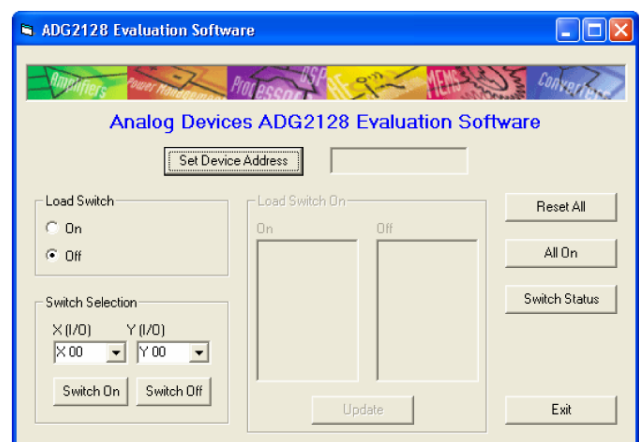


Figure 2. Main Dialog Box

### Setting the I<sup>2</sup>C Address

From the main dialog box, the device address can be set by clicking **Set Device Address**. This brings up the **Device Address** dialog box (shown in Figure 3).

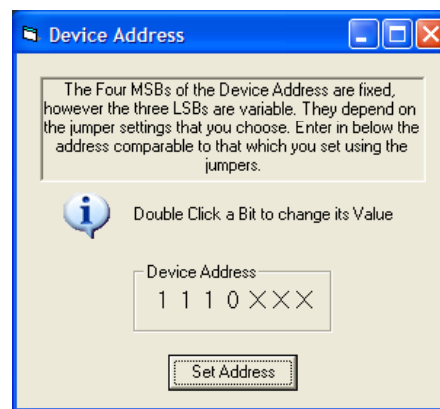


Figure 3. I<sup>2</sup>C Address Selection

The device address is set by double-clicking on the relevant bit. Note that the address set must correspond to the address set with the jumpers on the evaluation board, and it must also be set before the evaluation board software will work.

### LDSW (Load Switch)

If the load switch function is on, the switches can be updated simultaneously (as an example, for the RGB colors in video switching). Otherwise, if the load switch is off, the switch condition updates upon completion of each I<sup>2</sup>C write, that is, immediately upon clicking **Switch On** or **Switch Off**.

If the load switch is on, clicking **Switch On** or **Switch Off** stores the switch status temporarily until **Update** is clicked. The switches in temporary storage are shown in the list boxes within the software. All switches are then updated simultaneously upon clicking **Update**.

To see what the status of the switch array is at any given time, click **Switch Status**. This brings up the dialog box shown in Figure 4, which indicates if a switch is on (LED lit) or off (LED not lit).

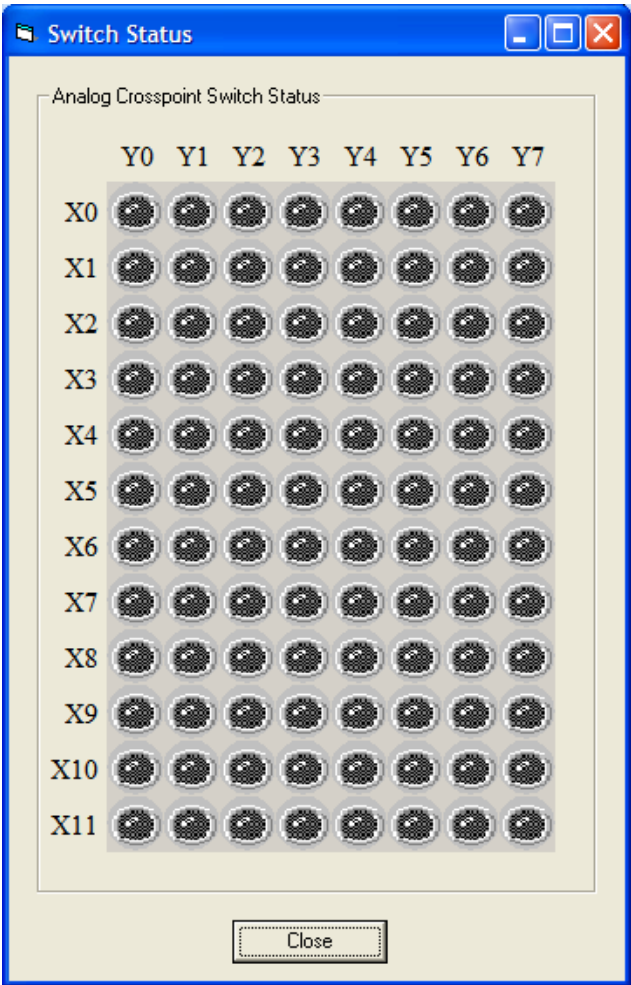


Figure 4. LED Display Showing Condition of All Switches

**RESET Function**

There is a **RESET** button on the board (see RESET on the schematic) that can be used to reset the switch array. Alternatively, clicking **Reset All** in the main dialog box of the software resets all switches. If the **Switch Status** dialog box appears after clicking **Reset All**, the **Switch Status** dialog box must be closed and reopened in order for the LED display to accurately reflect the states of the switches.



Figure 5. Schematic of USB Controller Circuitry

**EVAL-ADG2128EBZ**



Figure 6. Schematic of ADG2128 Circuitry



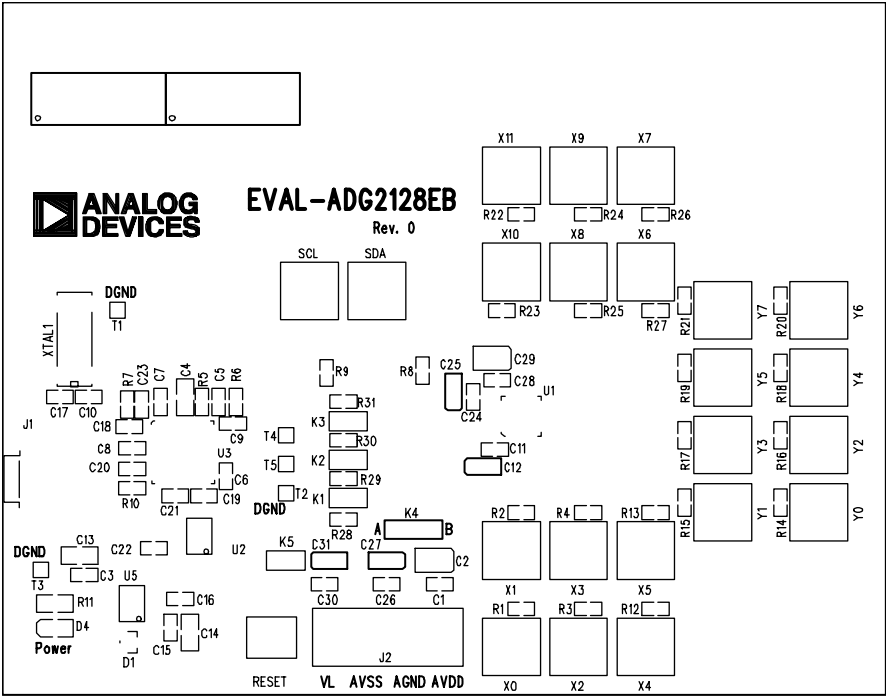


Figure 7. Component Placement Drawing

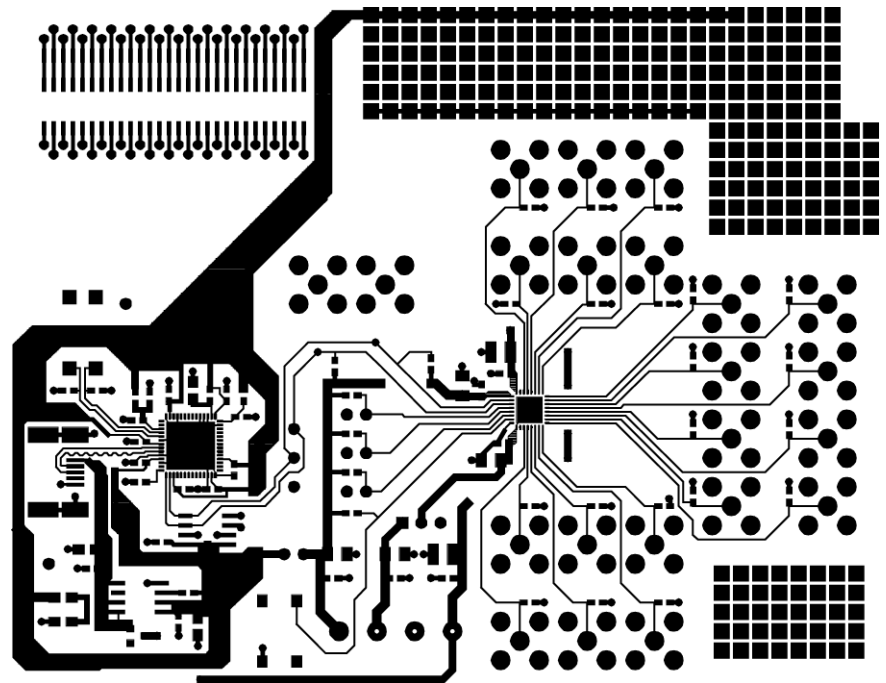


Figure 8. Component Side PCB Drawing

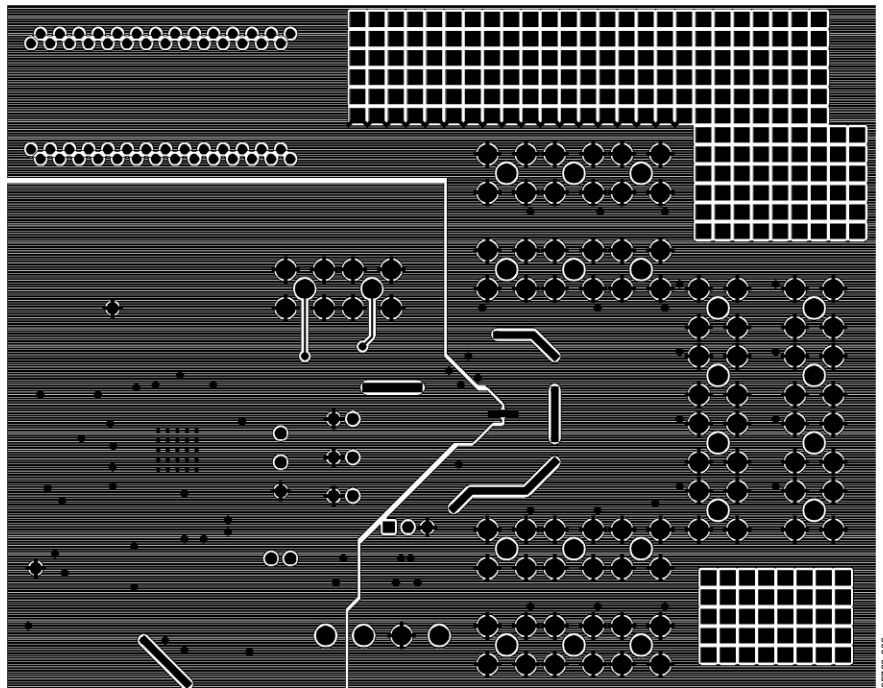


Figure 9. Solder Side PCB Drawing

## ORDERING INFORMATION

### COMPONENT LISTING

Table 4. Component Listing

Qty.	Reference Designator	Description	Supplier/Number
19	C1, C3, C5 to C9, C11, C15, C16, C18 to C22, C24, C26, C28, C30	0.1 $\mu$ F (0603 package) 50 V X7R SMD ceramic capacitor	FEC 4765837
2	C2, C29	10 $\mu$ F TAJ_B 16 V SMD tantalum capacitor	FEC 498-737
3	C4, C13, C14	10 $\mu$ F (0805 package) X5R ceramic capacitor	Digi-Key 490-1709-1-ND
4	C12, C25, C27, C31	10 $\mu$ F TAJ_A 6.3 V SMD tantalum capacitor	FEC 197-130
2	C10, C17	22 pF (0603 package) 50 V X7R SMD ceramic capacitor	FEC 722-005
1	C23	2.2 $\mu$ F (0603 package) 6.3 V X5R SMD ceramic capacitor	Digi-Key 490-1552-1-ND
1	D1	Diode SOT23	FEC 984-3728
1	D4	LED (0805 package)	FEC 5790852
1	J1	USB mini-B connector	FEC 9786490 (Digi-Key WM17116CT-ND)
4	J2	4-pin terminal block	FEC 151-791
5	K1 to K5	SIP-2P 2-pin header and shorting shunt	FEC 511-705 and FEC 150-411
20	R1 to R4, R12 to R27	SMD resistor (0603 package)	Not inserted
2	R5, R6	75 $\Omega$ SMD resistor (0603 package)	FEC 933-1549
1	R7	0 $\Omega$ SMD resistor (0603 package)	FEC 933-1662
2	R8, R9	2.2 k $\Omega$ SMD resistor (0603 package)	FEC 933-0810
1	R10	10 k $\Omega$ SMD resistor (0603 package)	FEC 933-0399
1	R11	1 k $\Omega$ SMD Resistor (0603 Package)	FEC 933-0380
4	R28 to R31	10 k $\Omega$ SMD resistor (0603 package)	FEC 933-0399
1	RESET	Push-button switch (sealed 6 mm $\times$ 8 mm)	FEC 177-807
5	T1 to T5	Test point	Not Inserted
1	U1	8 $\times$ 12 analog switch array	Analog Devices, Inc., ADG2128YCPZ
1	U2		Digi-Key 24LC64-I/SN-ND
1	U3	USB microcontroller	Digi-Key 428-1669-ND
1	U5	3.3 V regulator	Analog Devices, Inc., ADP3303ARZ-3.3
20	X0 to X11, Y0 to Y7	Socket, phono PCB gold one pair	FEC 382-4834
2	SCL, SDA	50 $\Omega$ straight SMB jack	FEC 1111349
1	XTAL1	24 MHz CM309S SMD crystal	FEC 950-9658

# EVAL-ADG2128EBZ

## ORDERING GUIDE

Model	Description
EVAL-ADG2128EBZ <sup>1</sup>	Evaluation Board

<sup>1</sup> Z = RoHS Compliant Part.

## ESD CAUTION



**ESD (electrostatic discharge) sensitive device.** Charged devices and circuit boards can discharge without detection. Although this product features patented or proprietary protection circuitry, damage may occur on devices subjected to high energy ESD. Therefore, proper ESD precautions should be taken to avoid performance degradation or loss of functionality.



Компания «ЭлектроПласт» предлагает заключение долгосрочных отношений при поставках импортных электронных компонентов на взаимовыгодных условиях!

Наши преимущества:

- Оперативные поставки широкого спектра электронных компонентов отечественного и импортного производства напрямую от производителей и с крупнейших мировых складов;
- Поставка более 17-ти миллионов наименований электронных компонентов;
- Поставка сложных, дефицитных, либо снятых с производства позиций;
- Оперативные сроки поставки под заказ (от 5 рабочих дней);
- Экспресс доставка в любую точку России;
- Техническая поддержка проекта, помощь в подборе аналогов, поставка прототипов;
- Система менеджмента качества сертифицирована по Международному стандарту ISO 9001;
- Лицензия ФСБ на осуществление работ с использованием сведений, составляющих государственную тайну;
- Поставка специализированных компонентов (Xilinx, Altera, Analog Devices, Intersil, Interpoint, Microsemi, Aeroflex, Peregrine, Syfer, Eurofarad, Texas Instrument, Miteq, Cobham, E2V, MA-COM, Hittite, Mini-Circuits, General Dynamics и др.);

Помимо этого, одним из направлений компании «ЭлектроПласт» является направление «Источники питания». Мы предлагаем Вам помощь Конструкторского отдела:

- Подбор оптимального решения, техническое обоснование при выборе компонента;
- Подбор аналогов;
- Консультации по применению компонента;
- Поставка образцов и прототипов;
- Техническая поддержка проекта;
- Защита от снятия компонента с производства.



#### Как с нами связаться

**Телефон:** 8 (812) 309 58 32 (многоканальный)

**Факс:** 8 (812) 320-02-42

**Электронная почта:** [org@eplast1.ru](mailto:org@eplast1.ru)

**Адрес:** 198099, г. Санкт-Петербург, ул. Калинина, дом 2, корпус 4, литера А.