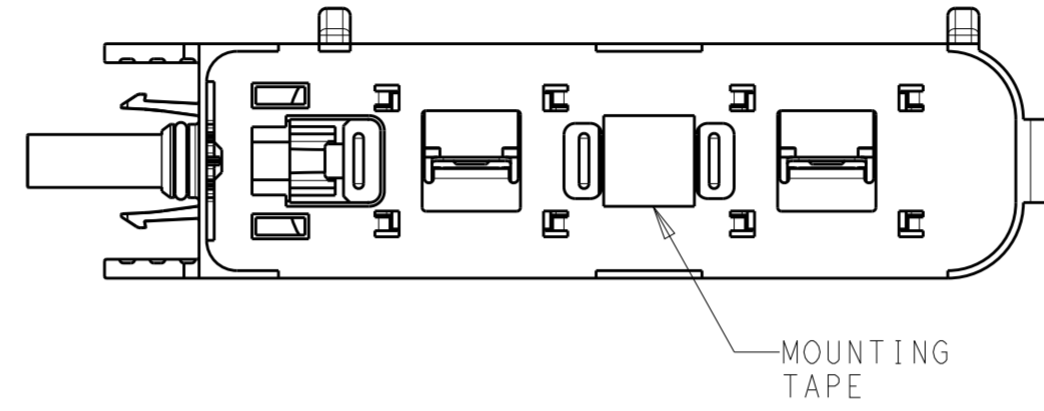


THIS DRAWING IS UNPUBLISHED. RELEASED FOR PUBLICATION  
 © COPYRIGHT copyright.d8te- ALL RIGHTS RESERVED.

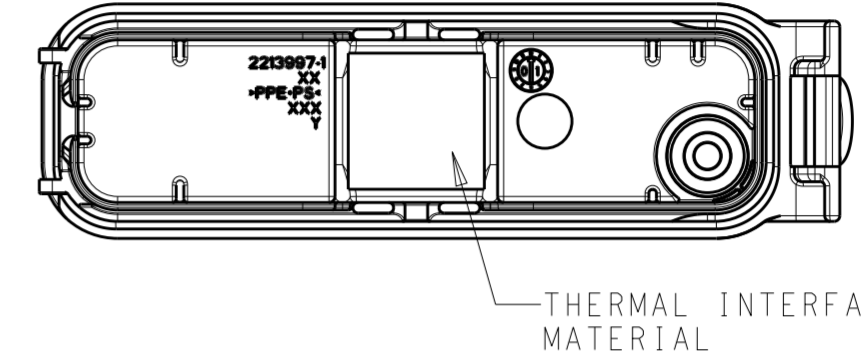
| REVISIONS |     |                         |           |       |
|-----------|-----|-------------------------|-----------|-------|
| P         | LTR | DESCRIPTION             | DATE      | APVD  |
|           | A   | RELEASED FOR PRODUCTION | 23OCT2017 | RK PO |

NOTES:

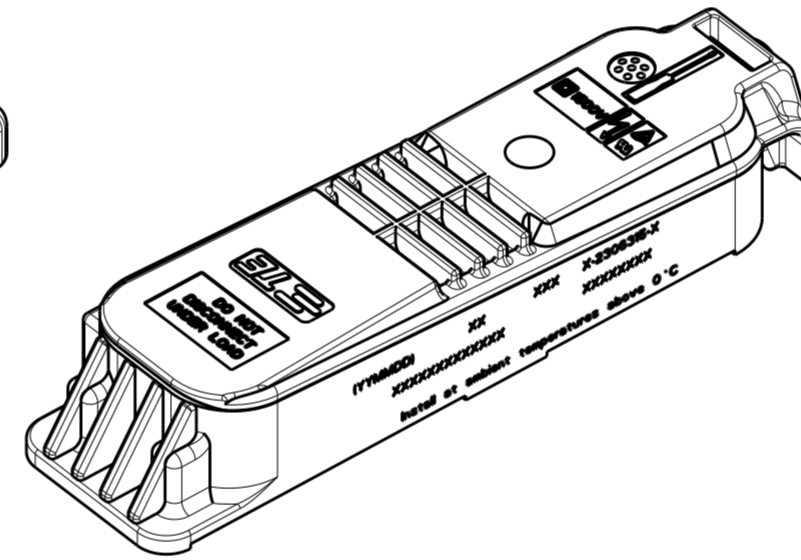
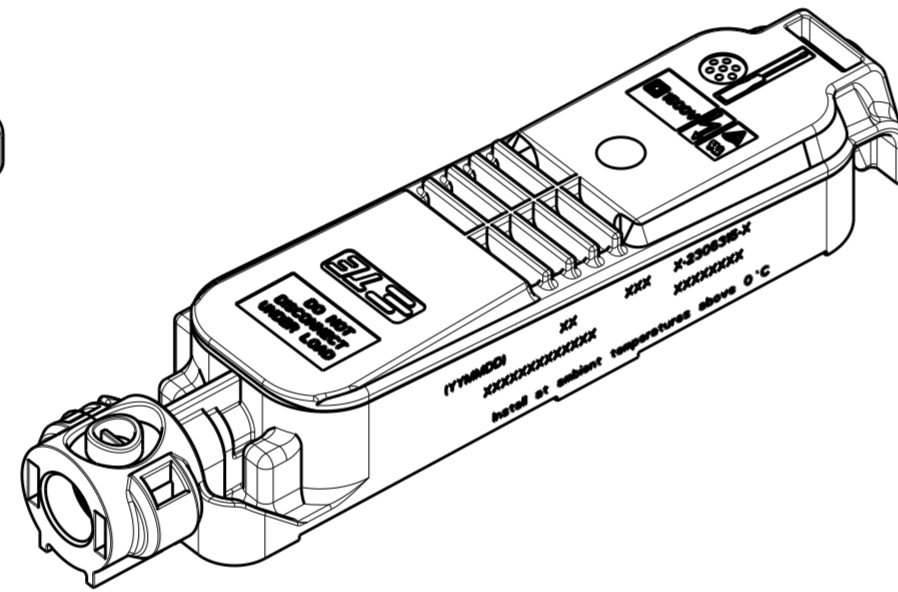
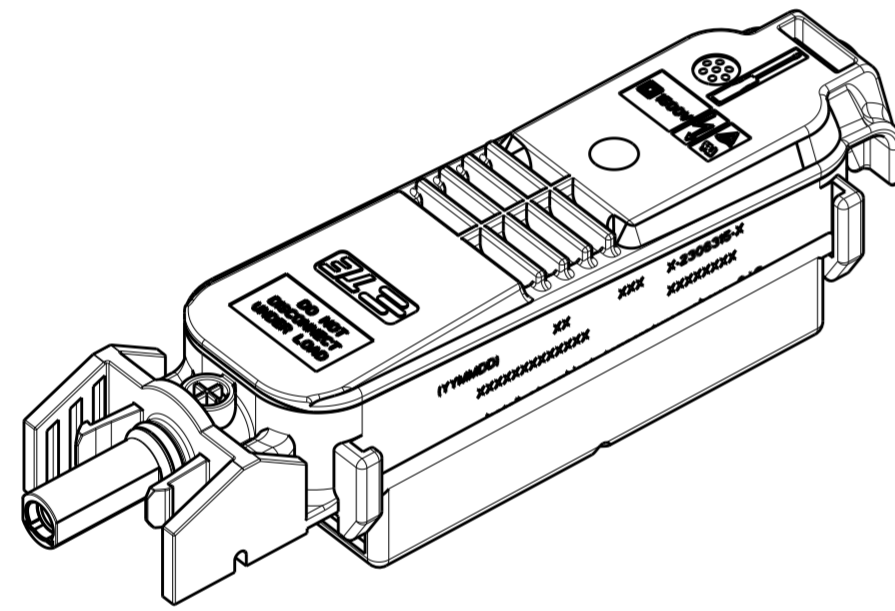
- 1 LID NOT ASSEMBLED WITH LOWER PART. ENCLOSED LOOSELY
  - 2 FLAP NOT ASSEMBLED WITH LOWER PART. ENCLOSED LOOSELY
  - 3 PART NUMBER.
  - 4 PRODUCTION DATE (YYMMDD)
  - 5 MANUFACTURING LOCATION CODE.
  - 6 OMEGA CLIP AS LOOSE PIECE IN BOX, PRODUCT SPEC. 108-94176
  - 7 MODEL CODE ACCORDING TE-SPEC. 404-74000-1
  - 8 CONSECUTIVE SERIAL NUMBER
  - 9 TEST EQUIPMENT NUMBER
  - 10 DIODES WELDED ON CONTACT RAIL
11. MUST COMPLY WITH DIRECTIVE 2002/95/EC (ROHS).  
 12. THIS PRODUCT HAS NOT COMPLETED VALIDATION TESTING.



BOTTOM VIEW OF TYPICAL ASSEMBLY WHEN MOUNTING TAPE IS APPLIED



BOTTOM VIEW OF LID SUBASSEMBLY WHEN THERMAL INTERFACE MATERIAL IS APPLIED



|                 |                 |                            |          |
|-----------------|-----------------|----------------------------|----------|
| BLACK           | PPE+PS          | EDGE FLAP                  | 12/2     |
| TIN OVER NICKEL | COPPER ALLOY    | INTERFACE CONTACT-SOCKET   | 11       |
| TIN OVER NICKEL | COPPER ALLOY    | INTERFACE CONTACT-PIN      | 10       |
| -               | -               | THERMAL INTERFACE MATERIAL | 9        |
| -               | -               | BYPASS DIODE: TYPE SL2020A | 8        |
| GRAY            | PPE+PS          | MEMBRANE RETAINER          | 7        |
| -               | -               | MEMBRANE VENT              | 6        |
| PLAIN           | STAINLESS STEEL | OMEGA CLIP                 | 5/6      |
| TIN             | COPPER ALLOY    | CONTACT RAIL               | 4        |
| BLACK           | PPE+PS          | BOX, LOWER HOUSING         | 3        |
| RED             | SILICONE        | O-RING SEAL                | 2        |
| BLACK           | PPE+PS          | BOX, LID                   | 1/1      |
| COLOR/FINISH    | MATERIAL        | DESCRIPTION                | ITEM NO. |

|                |       |                         |               |                            |             |
|----------------|-------|-------------------------|---------------|----------------------------|-------------|
| PVEDGE2GGA1V_1 | 36.0  | NORTH/SOUTH             | YES           | YES                        | 3-2306316-5 |
| PVEDGE2DGA1V_1 | 55.2  | NORTH/SOUTH             | YES           | YES                        | 3-2306316-2 |
| PVEDGE2FGA1V_1 | 58.7  | NORTH/SOUTH             | YES           | YES                        | 3-2306316-1 |
| PVEDGE2GGA1V_1 | 36.0  | NORTH/SOUTH             | NO            | YES                        | 2-2306316-5 |
| PVEDGE2DGA1V_1 | 55.2  | NORTH/SOUTH             | NO            | YES                        | 2-2306316-2 |
| PVEDGE2FGA1V_1 | 58.7  | NORTH/SOUTH             | NO            | YES                        | 2-2306316-1 |
| PVEDGE2GGA1T_1 | 36.0  | NORTH/SOUTH             | YES           | NO                         | 1-2306316-5 |
| PVEDGE2DGA1T_1 | 55.2  | NORTH/SOUTH             | YES           | NO                         | 1-2306316-2 |
| PVEDGE2FGA1T_1 | 58.7  | NORTH/SOUTH             | YES           | NO                         | 1-2306316-1 |
| PVEDGE2GGA1T_1 | 36.0  | NORTH/SOUTH             | NO            | NO                         | 2306316-5   |
| PVEDGE2DGA1T_1 | 55.2  | NORTH/SOUTH             | NO            | NO                         | 2306316-2   |
| PVEDGE2FGA1T_1 | 58.7  | NORTH/SOUTH             | NO            | NO                         | 2306316-1   |
| Model Code     | DIM X | PV PANEL FOIL DIRECTION | MOUNTING TAPE | THERMAL INTERFACE MATERIAL | PART NO.    |

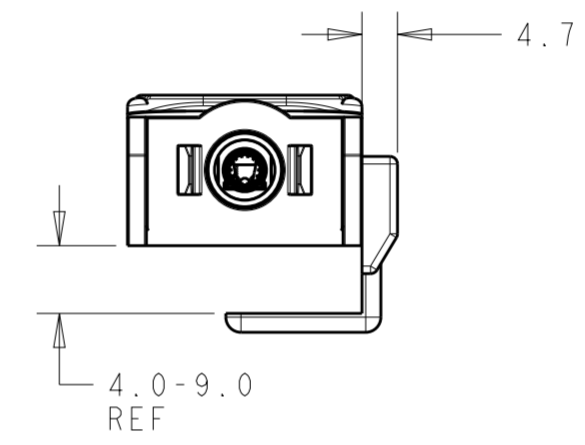
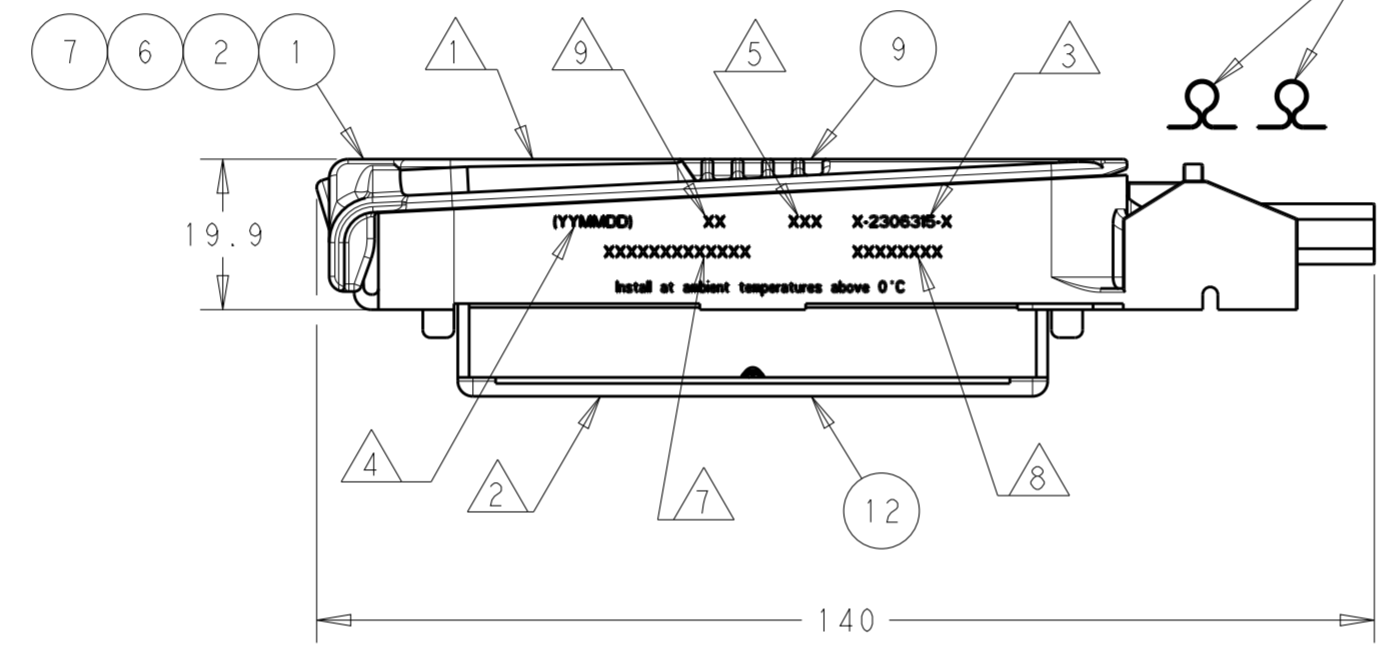
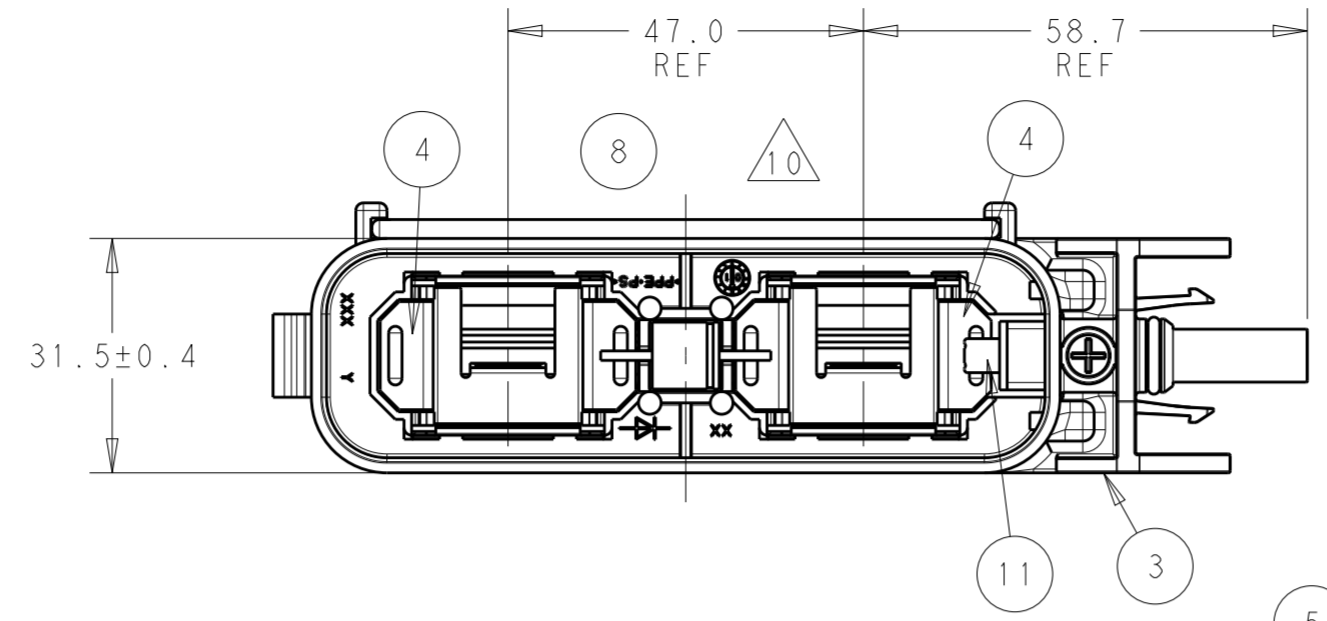
THIS DRAWING IS A CONTROLLED DOCUMENT.

|                |  |                               |  |
|----------------|--|-------------------------------|--|
| DIMENSIONS: mm | TOLERANCES UNLESS OTHERWISE SPECIFIED: | DWN RAVLS 13AUG2016           | TE Connectivity                              |
|                | 0 PLC ±0.50                            | CHK GINGRICH CHUCK 13AUG2016  |  |
|                | 1 PLC ±0.25                            | APVD GINGRICH CHUCK 13AUG2016 |  |
|                | 2 PLC ±0.13                            | PRODUCT SPEC 108-32122        |  |
| MATERIAL       | 3 PLC ±                                | APPLICATION SPEC 114-32157    | NAME PV EDGE ASSEMBLY, WITH FLAP, OMEGA-CLIP |
|                | 4 PLC ANGLES ±                         | WEIGHT -                      | SIZE A2                                      |
|                | FINISH                                 | CUSTOMER DRAWING              | SCALE 5:1 SHEET 1 OF 3 REV A                 |

THIS DRAWING IS UNPUBLISHED. RELEASED FOR PUBLICATION  
 © COPYRIGHT copyright.d8te- ALL RIGHTS RESERVED.

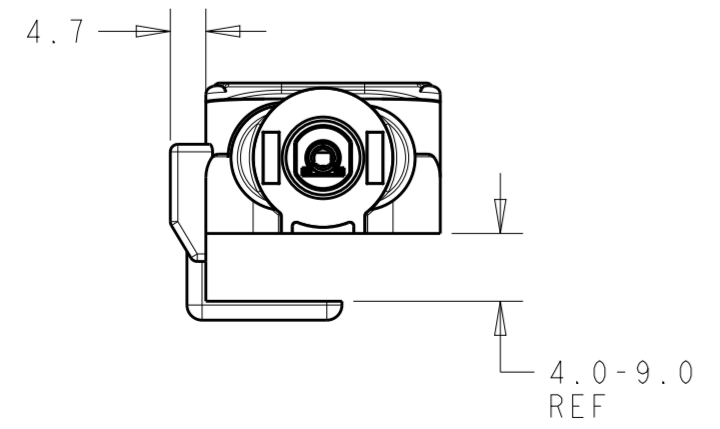
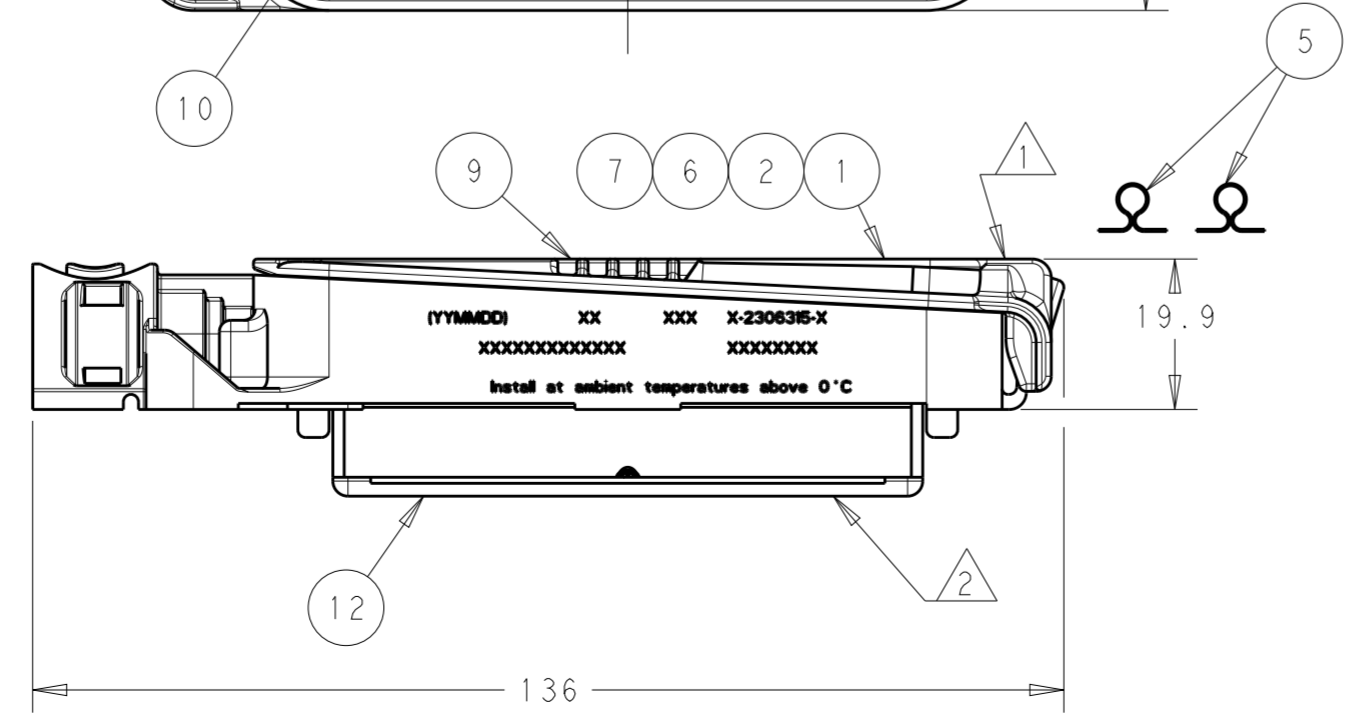
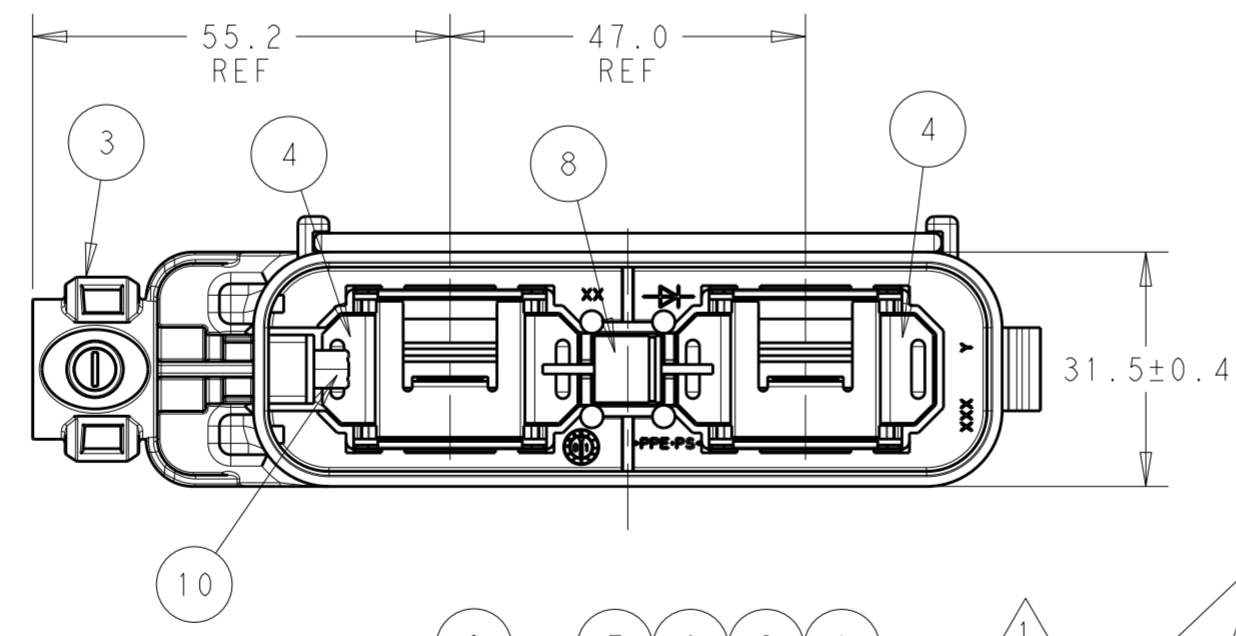
| REVISIONS |     |             |      |      |
|-----------|-----|-------------|------|------|
| P         | LTR | DESCRIPTION | DATE | APVD |
| -         |     | SEE SHEET 1 | -    | -    |
|           |     |             |      |      |
|           |     |             |      |      |

LID NOT SHOWN FOR REFERENCE ONLY




- 2306316-1
- 1-2306316-1
- 2-2306316-1
- 3-2306316-1
- SHOWN

LID NOT SHOWN FOR REFERENCE ONLY



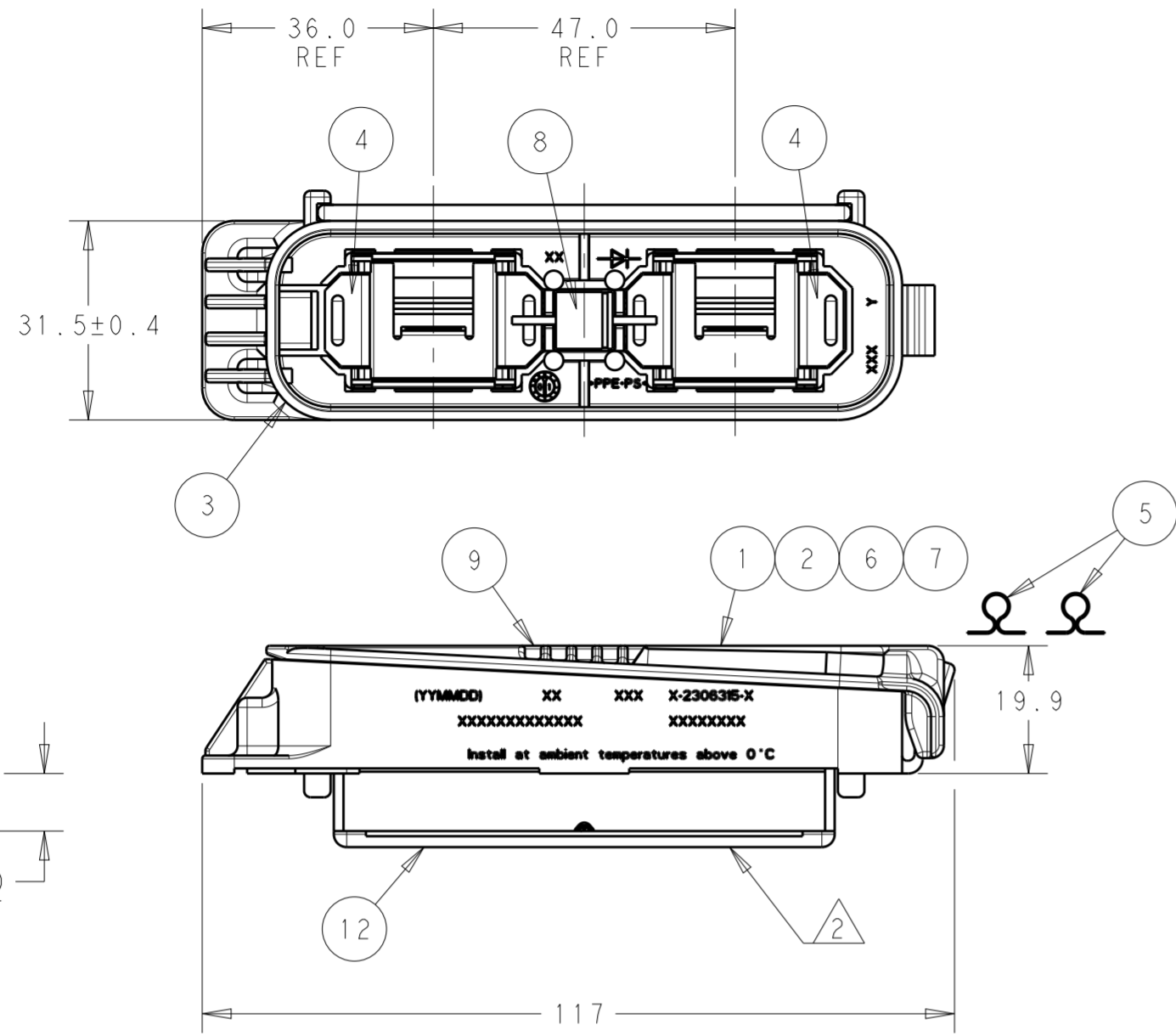
- 2306316-2
- 1-2306316-2
- 2-2306316-2
- 3-2306316-2
- SHOWN

|  |  |                                     |   |
|--|--|-------------------------------------|---|
| THIS DRAWING IS A CONTROLLED DOCUMENT. |  | DWN<br>RAVLS<br>13AUG2016           |  TE Connectivity |
| DIMENSIONS:<br>mm                      |  | CHK<br>GINGRICH CHUCK<br>13AUG2016  |   |
| TOLERANCES UNLESS OTHERWISE SPECIFIED: |  | APVD<br>GINGRICH CHUCK<br>13AUG2016 | NAME<br>PV EDGE ASSEMBLY, WITH FLAP, OMEGA-CLIP   |
| 0 PLC ±0.50                            |  | PRODUCT SPEC<br>108-32122           | SIZE<br>A2  |
| 1 PLC ±0.25                            |  | APPLICATION SPEC<br>114-32157       | CAGE CODE<br>C-2306316  |
| 2 PLC ±0.13                            |  | WEIGHT<br>-                         | DRAWING NO<br>-   |
| 3 PLC ±                                |  | CUSTOMER DRAWING                    | RESTRICTED TO<br>-  |
| 4 PLC ±                                |  | SCALE<br>5:1                        | SHEET<br>2 OF 3   |
| ANGLES ±                               |  |                                     | REV<br>A  |
| FINISH ±                               |  |                                     |   |

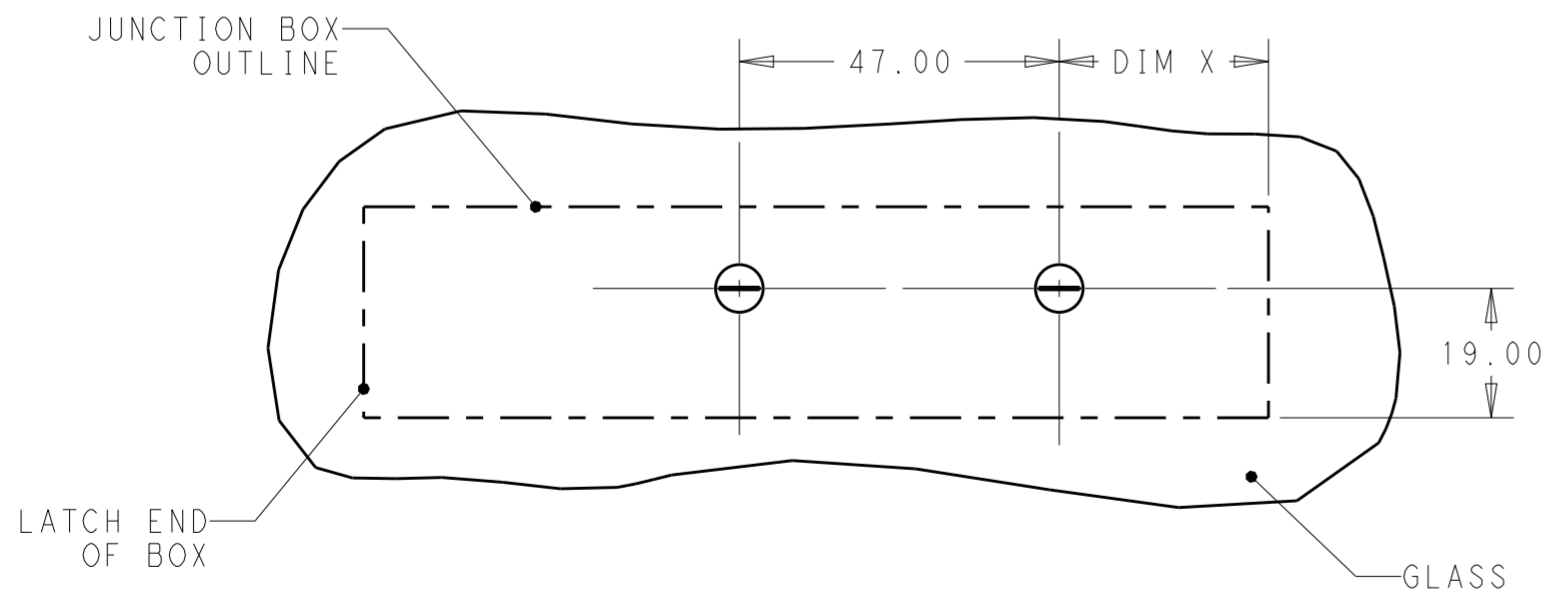
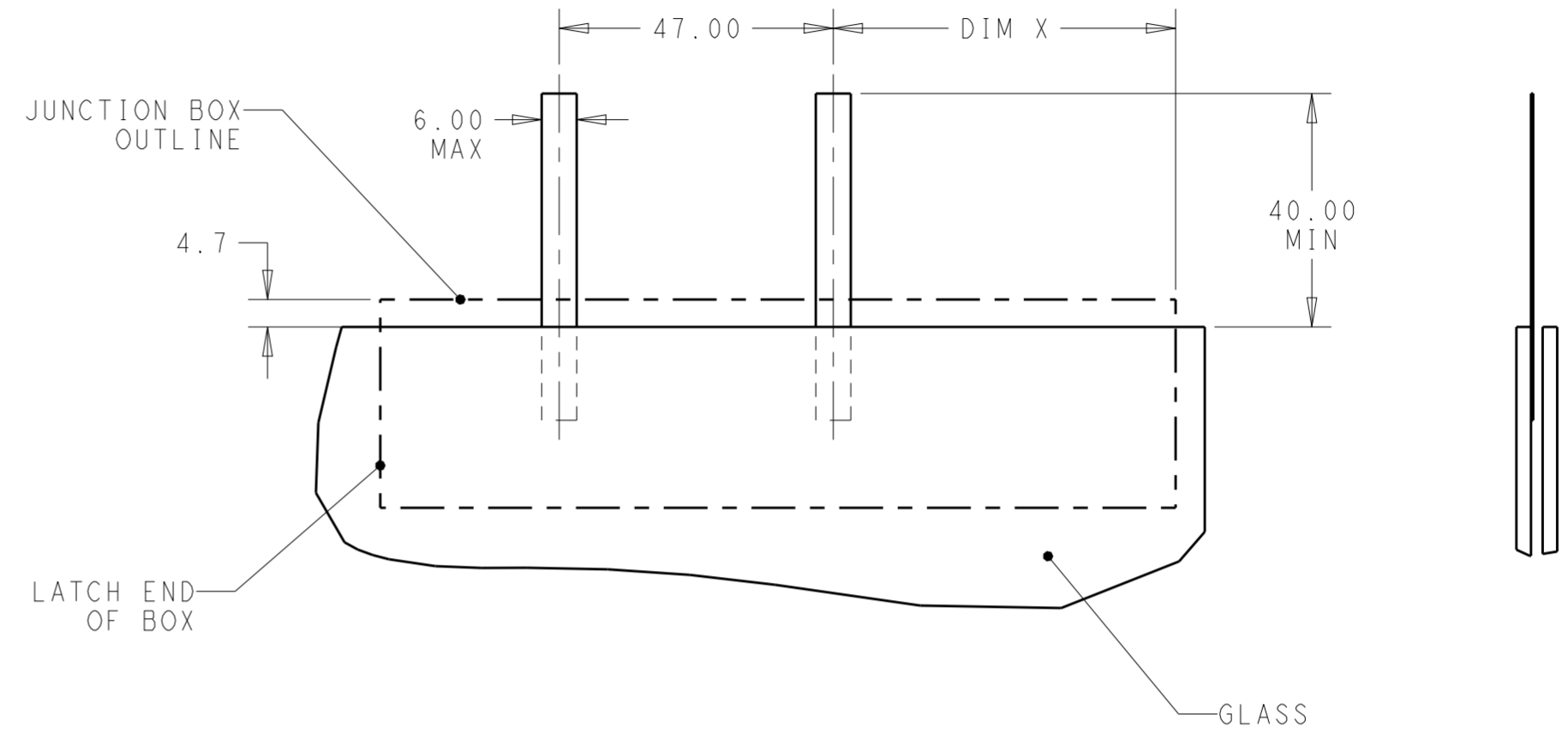
THIS DRAWING IS UNPUBLISHED. RELEASED FOR PUBLICATION  
 © COPYRIGHT copyright.d8te- ALL RIGHTS RESERVED.

| REVISIONS |     |             |      |      |
|-----------|-----|-------------|------|------|
| P         | LTR | DESCRIPTION | DATE | APVD |
| -         | -   | SEE SHEET 1 | -    | -    |
|           |     |             |      |      |
|           |     |             |      |      |

LID NOT SHOWN FOR REFERENCE ONLY

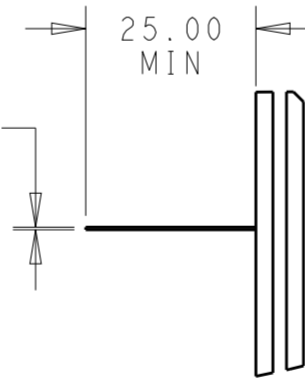


- 2306316-5
- 1-2306316-5
- 2-2306316-5
- 3-2306316-5
- SHOWN

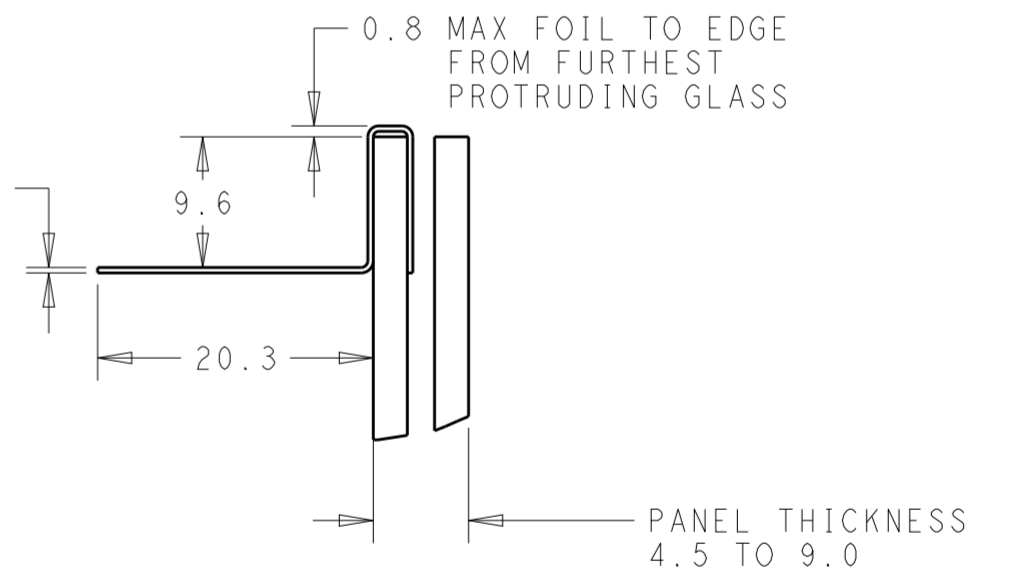


RECOMMENDED NON-EDGE MOUNT  
 (NORTH-SOUTH PV PANEL FOIL ORIENTATION)

SEE 114-32157 FOR FOIL THICKNESS RANGE



SEE 114-32157 FOR FOIL THICKNESS RANGE



AS FORMED READY FOR ASSEMBLY OF JUNCTION BOX

|  |        |                                     |   |                        |
|--|--------|-------------------------------------|---|------------------------|
| THIS DRAWING IS A CONTROLLED DOCUMENT. |        | DWN<br>RAVLS<br>13AUG2016           | TE Connectivity                                 |                        |
| DIMENSIONS: mm                         |        | CHK<br>GINGRICH CHUCK<br>13AUG2016  |   |                        |
| TOLERANCES UNLESS OTHERWISE SPECIFIED: |        | APVD<br>GINGRICH CHUCK<br>13AUG2016 | NAME<br>PV EDGE ASSEMBLY, WITH FLAP, OMEGA-CLIP |                        |
| 0 PLC ±0.50                            |        | PRODUCT SPEC<br>108-32122           | RESTRICTED TO                                   |                        |
| 1 PLC ±0.25                            |        | APPLICATION SPEC<br>114-32157       | SIZE<br>A2                                      | CAGE CODE<br>C-2306316 |
| 2 PLC ±0.13                            |        | WEIGHT<br>-                         | DRAWING NO<br>-                                 |                        |
| 3 PLC ±                                |        | CUSTOMER DRAWING                    | SCALE<br>5:1                                    | SHEET<br>3 OF 3        |
| 4 PLC ±                                | FINISH | REV<br>A                            |   |                        |



Компания «ЭлектроПласт» предлагает заключение долгосрочных отношений при поставках импортных электронных компонентов на взаимовыгодных условиях!

Наши преимущества:

- Оперативные поставки широкого спектра электронных компонентов отечественного и импортного производства напрямую от производителей и с крупнейших мировых складов;
- Поставка более 17-ти миллионов наименований электронных компонентов;
- Поставка сложных, дефицитных, либо снятых с производства позиций;
- Оперативные сроки поставки под заказ (от 5 рабочих дней);
- Экспресс доставка в любую точку России;
- Техническая поддержка проекта, помощь в подборе аналогов, поставка прототипов;
- Система менеджмента качества сертифицирована по Международному стандарту ISO 9001;
- Лицензия ФСБ на осуществление работ с использованием сведений, составляющих государственную тайну;
- Поставка специализированных компонентов (Xilinx, Altera, Analog Devices, Intersil, Interpoint, Microsemi, Aeroflex, Peregrine, Syfer, Eurofarad, Texas Instrument, Miteq, Cobham, E2V, MA-COM, Hittite, Mini-Circuits, General Dynamics и др.);

Помимо этого, одним из направлений компании «ЭлектроПласт» является направление «Источники питания». Мы предлагаем Вам помощь Конструкторского отдела:

- Подбор оптимального решения, техническое обоснование при выборе компонента;
- Подбор аналогов;
- Консультации по применению компонента;
- Поставка образцов и прототипов;
- Техническая поддержка проекта;
- Защита от снятия компонента с производства.



#### Как с нами связаться

**Телефон:** 8 (812) 309 58 32 (многоканальный)

**Факс:** 8 (812) 320-02-42

**Электронная почта:** [org@eplast1.ru](mailto:org@eplast1.ru)

**Адрес:** 198099, г. Санкт-Петербург, ул. Калинина, дом 2, корпус 4, литера А.