

# Rack Mount Kits

## SELECTOR GUIDE: RACK MOUNT KITS

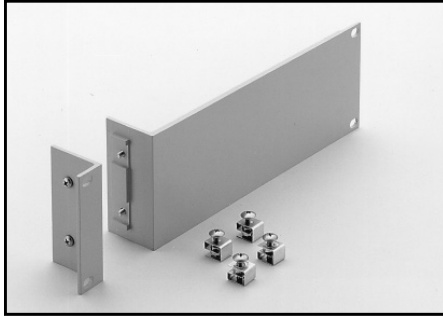
| Instrument                           | Fixed Single                | Fixed Dual   | Shelf                          | Rear or Rail Support |        |                               |         |
|--------------------------------------|-----------------------------|--|--------------------------------|----------------------|--------|-------------------------------|---------|
| Series 2000<br>2182A<br>Series 2300  | Series 2500<br>2700<br>2701 | 6220<br>6221<br>6485                                   | 6487<br>6514<br>6517B          | 4288-1               | 4288-2 | 4288-9 <sup>3</sup><br>4299-7 |         |
| Series 2100, Series 2400, 3390, 6430 | 4299-3                      | 4299-4   | 4299-7                         |                      |        |                               |         |
| Series 2260B                         |                             |  | 2260B-RMK-EIA<br>2260B-RMK-JIS |                      |        |                               |         |
| Series 2268                          | 2268-RMK-1                  | 2268-RMK-1   |                                |                      |        |                               |         |
| 2290-5                               | 2290-5-RMK-1                | 2290-5-RMK-2   |                                |                      |        |                               |         |
| 2290-10                              | 2290-10-RMK-1               | 2290-10-RMK-2  | 4299-7                         |                      |        |                               |         |
| 2450, 2460, 2461, DMM7510            | 4299-8                      | 4299-9<br>4299-10 <sup>1</sup><br>4299-11 <sup>2</sup> |                                |                      |        |                               |         |
| Series 2600B                         | 4299-1                      | 4299-2   |                                |                      |        |                               |         |
| 2651A, 2657A, 708B                   | 4299-6                      |  |                                |                      |        |                               |         |
| 2750, System 46, System 46T          |                             |  |                                |                      |        |                               | 4288-7  |
| 707B                                 | Included on 707B chassis    |  |                                |                      |        |                               |         |
| Series 3700A                         |                             |  |                                |                      |        |                               | 4288-10 |
| 4200-SCS/C or 4200-SCS/F             |                             |  |                                |                      |        |                               | 4200-RM |
| 7002                                 | 7002-RMK-1                  |  |                                |                      |        |                               |         |

1. Model 4299-10 mounts one Model 2450 and one Series 26XXB.
2. Model 4299-11 mounts one Model 2450 and one Series 2000, 2400, and all other 2U half-rack instruments except the Series 2200 and Series 2290 instruments.
3. Model 4288-9 is the recommended shelf for these models based on color.

# Rack Mount Kits

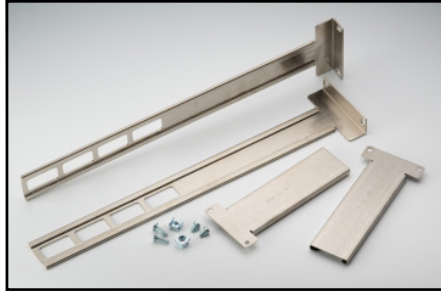
## Fixed Single Unit Rack Kit

(For mounting of one half-rack-width instrument or one full-rack-width instrument)



**4288-1:** For half-rack-width models.  
2U (3.5 in.) high.

For use with: Series 2000, 2182A, Series 2300, 2700, 2701, 6220, 6221, 6485, 6487, 6514, 6517B, 7001.

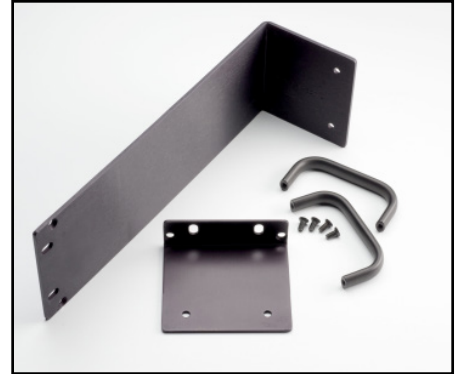


**4299-6:** For full-rack-width models.  
2U (3.5 in.) high.

For use with: 2651A, 2657A, 708A

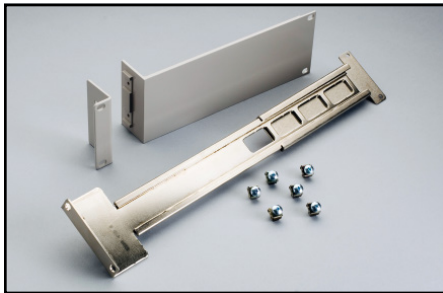
**4299-8:** For half-rack-width models.  
2U (3.5 in.) high.

For use with: 2450, 2460, 2461, DMM7510  
(graphical display models only)



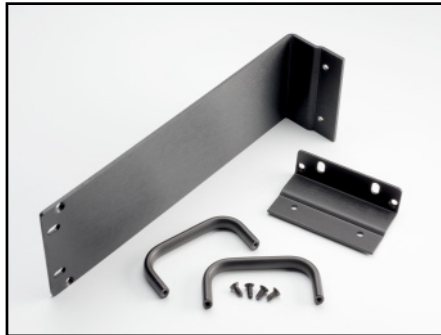
**2290-10-RMK-1:** For half-rack-width models.  
2U (3.5 in.) high.

For use with: 2290-10



**4299-1:** For half-rack-width models.  
2U (3.5 in.) high.

For use with: Series 2600B



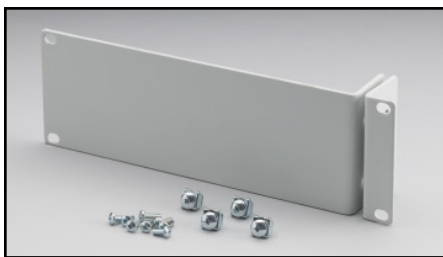
**2268-RMK-1:** For half-rack-width models.  
1U (1.75 in.) high.

For use with: Series 2268



**7002-RMK-1:** 4U (7.0 in.) high.  
Full-rack model.

For use with: 7002



**4299-3:** For half-rack-width models.  
2U (3.5 in.) high. Allows for mounting of  
a 2U Keysight Instrument as well.

For use with: Series 2100, Series 2400,  
3390, 6430

**2290-5-RMK-1:** For half-rack-width models.  
2U (3.5 in.) high.

For use with: 2290-5

# Rack Mount Kits

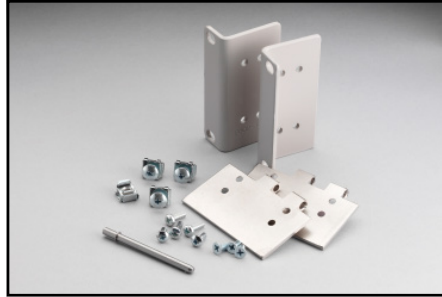
## Fixed Dual Unit Rack Kit

(For mounting two or more instruments in the width of a rack)



**4288-2:** For half-rack-width models. 2U (3.5 in.) high.

For use with: Series 2000, 2182A, Series 2300, 2700, 2701, 6220, 6221, 6485, 6487, 6514, 6517B, 7001



**4299-4:** For half-rack-width models. 2U (3.5 in.) high. Allows mounting a 2U Keithley instrument with a Keysight instrument.

For use with: Series 2100, Series 2400, 3390, 6430

**4299-9:** For half-rack-width models. 2U (3.5 in.) high.

For use with: 2450, 2460, 2461, DMM7510 (graphical display models only)

**4299-10:** For half-rack-width models. 2U (3.5 in.) high.

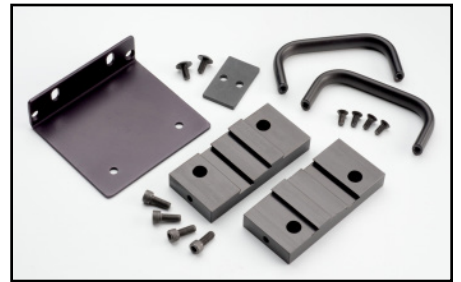
For use with: 2450, 2460, 2461, DMM7510 (graphical display models only), Series 2260B

**4299-11:** For half-rack-width models. 2U (3.5 in.) high.

For use with: 2450, 2460, 2461, DMM7510 (graphical display models only), Series 2000, Series 2400 or a 2U Keysight instrument

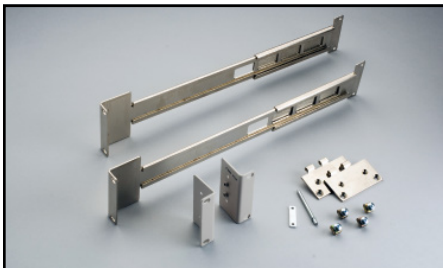
**2268-RMK-2:** For half-rack-width models. 1U (1.75 in.) high.

For use with: Series 2268



**2290-5-RMK-2:** For half-rack-width models. 2U (3.5 in.) high.

For use with: 2290-5



**4299-2:** For half-rack-width models. 2U (3.5 in.) high.

For use with: Series 2600B



**2290-10-RMK-2:** For half-rack-width models. 2U (3.5 in.) high.

For use with: 2290-10

# Rack Mount Kits

## Shelf Rack Kit

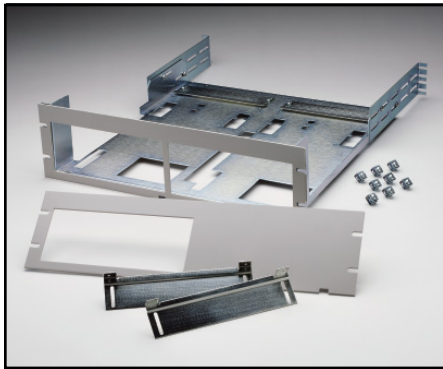
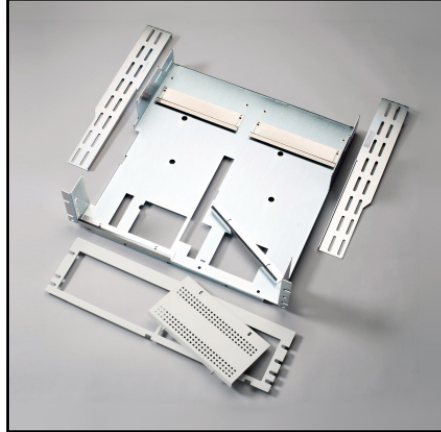
(For mounting of one or two instruments in a rack)

**2260B-RMK-EIA:** Supports the EIA rack standard. Allows for full-rack-width assembly configuration of sixth-, third-, and half-rack-width models. 3U (5.25 in.) high.

For use with: **Series 2260B**

**2260B-RMK-JIS:** Supports the JIS rack standard. Allows for full-rack-width assembly configuration of sixth-, third-, and half-rack-width models. 3U (5.25 in.) high.

For use with: **Series 2260B**



**4288-9:** Mounts 2U-high instruments in 3U-high rack space. 3U (5.25 in.) high.

For use with: **Series 2000, 2182A, Series 2300, 2700, 2701, 6220, 6221, 6485, 6487, 6514, 6517B, 7001**

### 4299-7 Universal Shelf Rack Kit:

Mounts 2U-high instruments in 3U-high rack space. 3U (5.25 in.) high.

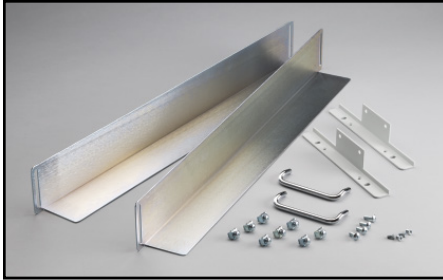
For use with: **Series 2000, Series 2100, 2182A, Series 2200, Series 2300, Series 2400 (Except graphical) 2700, 2701, 6220, 6221, 6430, 6485, 6487, 6514, 6517B, 7001**

**RMU 2U:** 3U (5.25 in.) high.

For use with: **2290-5 and 2290-10**

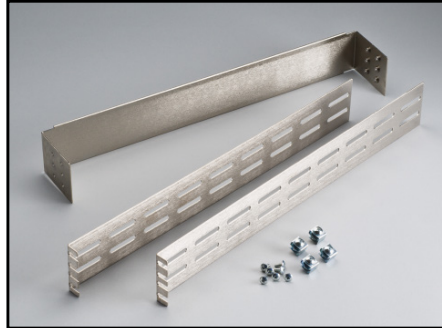
# Rack Mount Kits

## Rear/Rail Support Kits and Miscellaneous Rack Accessories



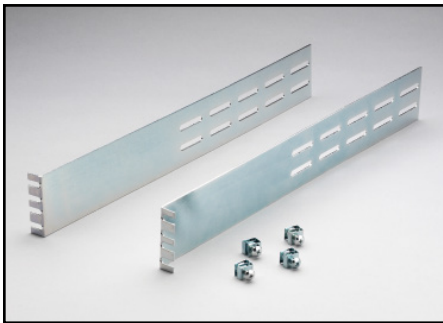
**4200-RM**

For use with: 4200-SCS



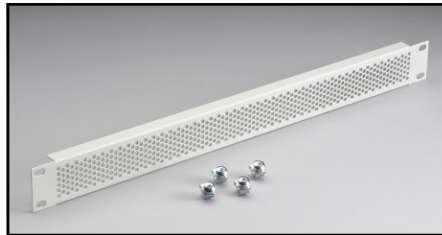
**4288-10**

For use with: Series 3700A



**4288-7**

For use with: 2750, System 46, System 46T



**4299-5:** 1U (1.75") vented panel.

For use with: Series 2600B



**4200-KEY-RM**

For use with: 4200-SCS

**376-7589-xx:** Cosmetic filler panel

For use with Series 2200



Компания «ЭлектроПласт» предлагает заключение долгосрочных отношений при поставках импортных электронных компонентов на взаимовыгодных условиях!

Наши преимущества:

- Оперативные поставки широкого спектра электронных компонентов отечественного и импортного производства напрямую от производителей и с крупнейших мировых складов;
- Поставка более 17-ти миллионов наименований электронных компонентов;
- Поставка сложных, дефицитных, либо снятых с производства позиций;
- Оперативные сроки поставки под заказ (от 5 рабочих дней);
- Экспресс доставка в любую точку России;
- Техническая поддержка проекта, помощь в подборе аналогов, поставка прототипов;
- Система менеджмента качества сертифицирована по Международному стандарту ISO 9001;
- Лицензия ФСБ на осуществление работ с использованием сведений, составляющих государственную тайну;
- Поставка специализированных компонентов (Xilinx, Altera, Analog Devices, Intersil, Interpoint, Microsemi, Aeroflex, Peregrine, Syfer, Eurofarad, Texas Instrument, Miteq, Cobham, E2V, MA-COM, Hittite, Mini-Circuits, General Dynamics и др.);

Помимо этого, одним из направлений компании «ЭлектроПласт» является направление «Источники питания». Мы предлагаем Вам помощь Конструкторского отдела:

- Подбор оптимального решения, техническое обоснование при выборе компонента;
- Подбор аналогов;
- Консультации по применению компонента;
- Поставка образцов и прототипов;
- Техническая поддержка проекта;
- Защита от снятия компонента с производства.



#### Как с нами связаться

**Телефон:** 8 (812) 309 58 32 (многоканальный)

**Факс:** 8 (812) 320-02-42

**Электронная почта:** [org@eplast1.ru](mailto:org@eplast1.ru)

**Адрес:** 198099, г. Санкт-Петербург, ул. Калинина, дом 2, корпус 4, литера А.