

Rack Mount Kits

SELECTOR GUIDE: RACK MOUNT KITS

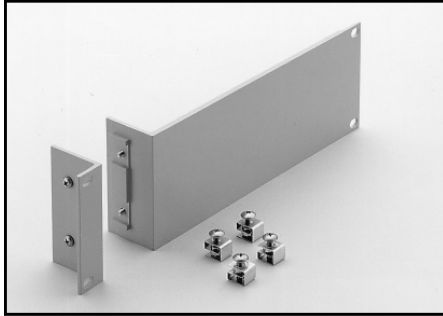
Instrument	Fixed Single	Fixed Dual	Shelf	Rear or Rail Support			
Series 2000 2182A Series 2300	Series 2500 2700 2701	6220 6221 6485	6487 6514 6517B	4288-1	4288-2	4288-9 ³ 4299-7	
Series 2100, Series 2400, 3390, 6430		4299-3		4299-4		4299-7	
Series 2260B						2260B-RMK-EIA 2260B-RMK-JIS	
Series 2268		2268-RMK-1		2268-RMK-1			
2290-5		2290-5-RMK-1		2290-5-RMK-2			
2290-10		2290-10-RMK-1		2290-10-RMK-2	4299-7		
2450, 2460, 2461, DMM7510		4299-8		4299-9 4299-10 ¹ 4299-11 ²			
Series 2600B		4299-1		4299-2			
2651A, 2657A, 708B		4299-6					
2750, System 46, System 46T							4288-7
707B		Included on 707B chassis					
Series 3700A							4288-10
4200-SCS/C or 4200-SCS/F							4200-RM
7002		7002-RMK-1					

1. Model 4299-10 mounts one Model 2450 and one Series 26XXB.
2. Model 4299-11 mounts one Model 2450 and one Series 2000, 2400, and all other 2U half-rack instruments except the Series 2200 and Series 2290 instruments.
3. Model 4288-9 is the recommended shelf for these models based on color.

Rack Mount Kits

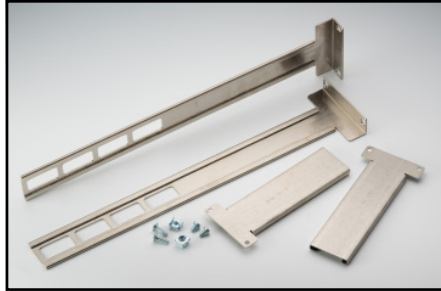
Fixed Single Unit Rack Kit

(For mounting of one half-rack-width instrument or one full-rack-width instrument)



4288-1: For half-rack-width models.
2U (3.5 in.) high.

For use with: Series 2000, 2182A, Series 2300, 2700, 2701, 6220, 6221, 6485, 6487, 6514, 6517B, 7001.

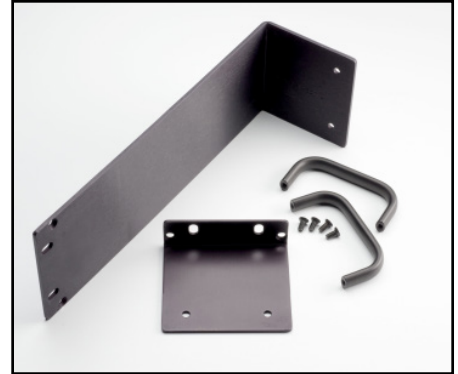


4299-6: For full-rack-width models.
2U (3.5 in.) high.

For use with: 2651A, 2657A, 708A

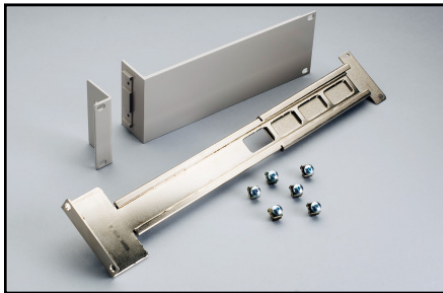
4299-8: For half-rack-width models.
2U (3.5 in.) high.

For use with: 2450, 2460, 2461, DMM7510
(graphical display models only)



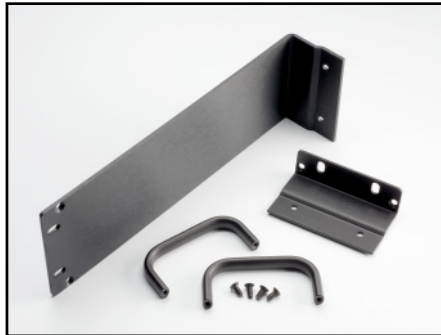
2290-10-RMK-1: For half-rack-width models.
2U (3.5 in.) high.

For use with: 2290-10



4299-1: For half-rack-width models.
2U (3.5 in.) high.

For use with: Series 2600B



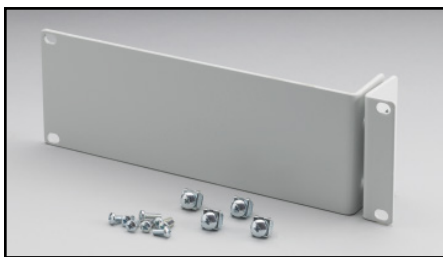
2268-RMK-1: For half-rack-width models.
1U (1.75 in.) high.

For use with: Series 2268



7002-RMK-1: 4U (7.0 in.) high.
Full-rack model.

For use with: 7002



4299-3: For half-rack-width models.
2U (3.5 in.) high. Allows for mounting of
a 2U Keysight Instrument as well.

For use with: Series 2100, Series 2400,
3390, 6430

2290-5-RMK-1: For half-rack-width models.
2U (3.5 in.) high.

For use with: 2290-5

Rack Mount Kits

Fixed Dual Unit Rack Kit

(For mounting two or more instruments in the width of a rack)



4288-2: For half-rack-width models. 2U (3.5 in.) high.

For use with: Series 2000, 2182A, Series 2300, 2700, 2701, 6220, 6221, 6485, 6487, 6514, 6517B, 7001



4299-4: For half-rack-width models. 2U (3.5 in.) high. Allows mounting a 2U Keithley instrument with a Keysight instrument.

For use with: Series 2100, Series 2400, 3390, 6430

4299-9: For half-rack-width models. 2U (3.5 in.) high.

For use with: 2450, 2460, 2461, DMM7510 (graphical display models only)

4299-10: For half-rack-width models. 2U (3.5 in.) high.

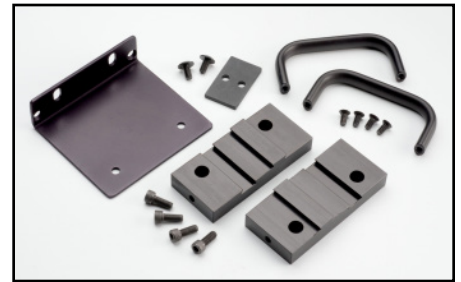
For use with: 2450, 2460, 2461, DMM7510 (graphical display models only), Series 2260B

4299-11: For half-rack-width models. 2U (3.5 in.) high.

For use with: 2450, 2460, 2461, DMM7510 (graphical display models only), Series 2000, Series 2400 or a 2U Keysight instrument

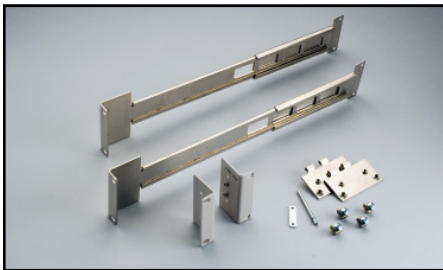
2268-RMK-2: For half-rack-width models. 1U (1.75 in.) high.

For use with: Series 2268



2290-5-RMK-2: For half-rack-width models. 2U (3.5 in.) high.

For use with: 2290-5



4299-2: For half-rack-width models. 2U (3.5 in.) high.

For use with: Series 2600B



2290-10-RMK-2: For half-rack-width models. 2U (3.5 in.) high.

For use with: 2290-10

Rack Mount Kits

Shelf Rack Kit

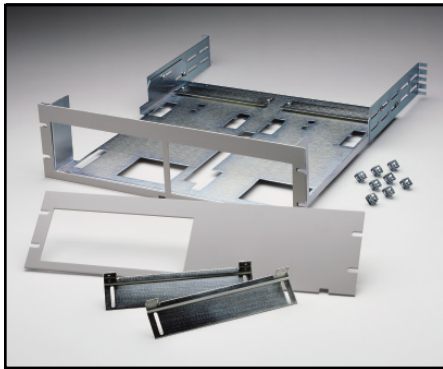
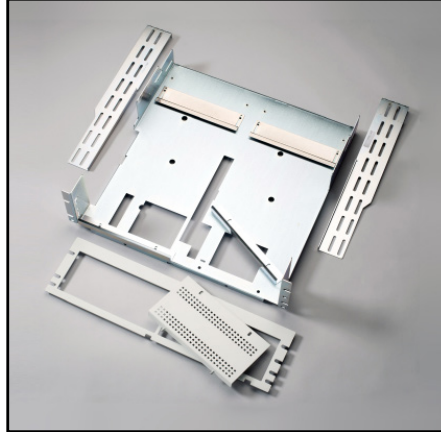
(For mounting of one or two instruments in a rack)

2260B-RMK-EIA: Supports the EIA rack standard. Allows for full-rack-width assembly configuration of sixth-, third-, and half-rack-width models. 3U (5.25 in.) high.

For use with: **Series 2260B**

2260B-RMK-JIS: Supports the JIS rack standard. Allows for full-rack-width assembly configuration of sixth-, third-, and half-rack-width models. 3U (5.25 in.) high.

For use with: **Series 2260B**



4288-9: Mounts 2U-high instruments in 3U-high rack space. 3U (5.25 in.) high.

For use with: **Series 2000, 2182A, Series 2300, 2700, 2701, 6220, 6221, 6485, 6487, 6514, 6517B, 7001**

4299-7 Universal Shelf Rack Kit:

Mounts 2U-high instruments in 3U-high rack space. 3U (5.25 in.) high.

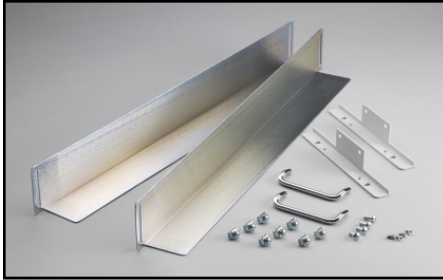
For use with: **Series 2000, Series 2100, 2182A, Series 2200, Series 2300, Series 2400 (Except graphical) 2700, 2701, 6220, 6221, 6430, 6485, 6487, 6514, 6517B, 7001**

RMU 2U: 3U (5.25 in.) high.

For use with: **2290-5 and 2290-10**

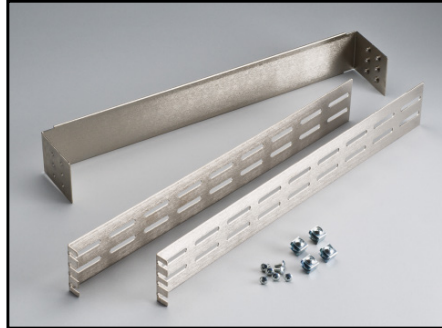
Rack Mount Kits

Rear/Rail Support Kits and Miscellaneous Rack Accessories



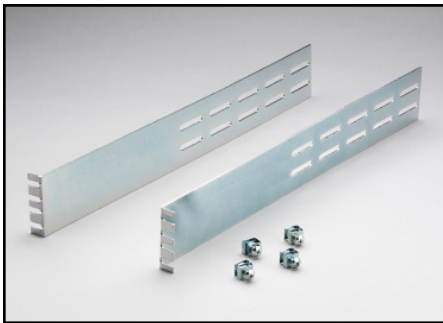
4200-RM

For use with: 4200-SCS



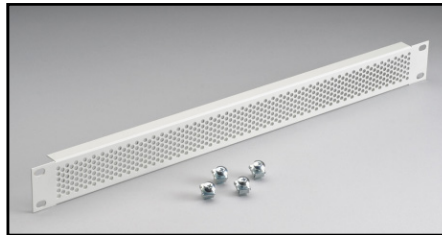
4288-10

For use with: Series 3700A



4288-7

For use with: 2750, System 46, System 46T



4299-5: 1U (1.75") vented panel.

For use with: Series 2600B



4200-KEY-RM

For use with: 4200-SCS

376-7589-xx: Cosmetic filler panel

For use with Series 2200



Компания «ЭлектроПласт» предлагает заключение долгосрочных отношений при поставках импортных электронных компонентов на взаимовыгодных условиях!

Наши преимущества:

- Оперативные поставки широкого спектра электронных компонентов отечественного и импортного производства напрямую от производителей и с крупнейших мировых складов;
- Поставка более 17-ти миллионов наименований электронных компонентов;
- Поставка сложных, дефицитных, либо снятых с производства позиций;
- Оперативные сроки поставки под заказ (от 5 рабочих дней);
- Экспресс доставка в любую точку России;
- Техническая поддержка проекта, помощь в подборе аналогов, поставка прототипов;
- Система менеджмента качества сертифицирована по Международному стандарту ISO 9001;
- Лицензия ФСБ на осуществление работ с использованием сведений, составляющих государственную тайну;
- Поставка специализированных компонентов (Xilinx, Altera, Analog Devices, Intersil, Interpoint, Microsemi, Aeroflex, Peregrine, Syfer, Eurofarad, Texas Instrument, Miteq, Cobham, E2V, MA-COM, Hittite, Mini-Circuits, General Dynamics и др.);

Помимо этого, одним из направлений компании «ЭлектроПласт» является направление «Источники питания». Мы предлагаем Вам помощь Конструкторского отдела:

- Подбор оптимального решения, техническое обоснование при выборе компонента;
- Подбор аналогов;
- Консультации по применению компонента;
- Поставка образцов и прототипов;
- Техническая поддержка проекта;
- Защита от снятия компонента с производства.



Как с нами связаться

Телефон: 8 (812) 309 58 32 (многоканальный)

Факс: 8 (812) 320-02-42

Электронная почта: org@eplast1.ru

Адрес: 198099, г. Санкт-Петербург, ул. Калинина, дом 2, корпус 4, литера А.