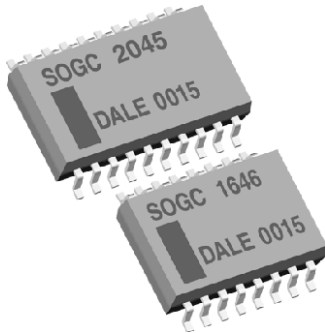




**Thick Film Resistor Networks, Dual-In-Line  
Small Outline Molded Dip 45 & 46 Schematics**



**FEATURES**

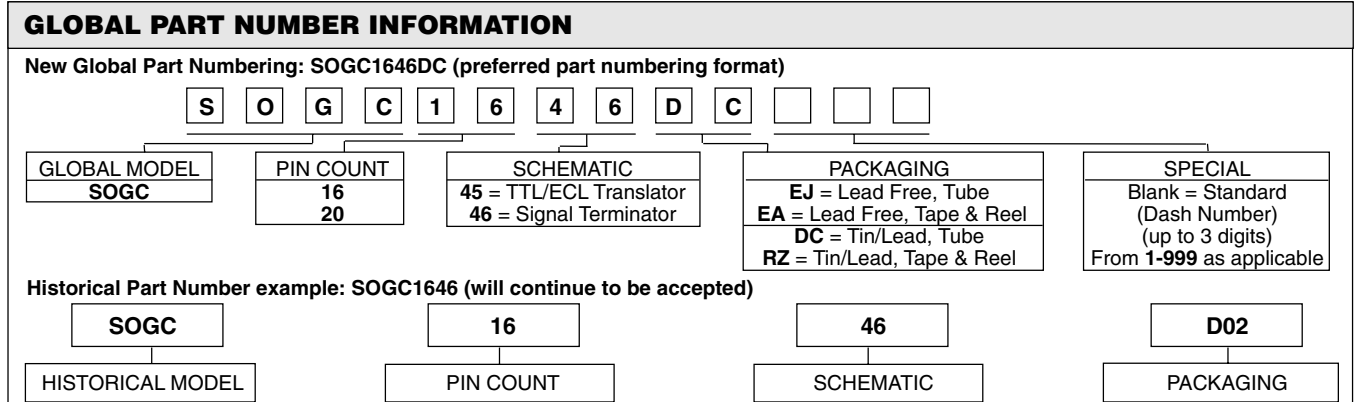
- 0.110" [2.79] maximum seated height
- Rugged, molded case construction
- 0.050" [1.27] lead spacing
- Reduces total assembly costs
- Compatible with automatic surface mounting equipment
- Uniform performance characteristics
- Meets EIA PDP 100, SOGN-0003 outline dimensions
- Available in tube pack or tape and reel pack
- Lead (Pb)-free version is RoHS compliant



STANDARD ELECTRICAL SPECIFICATIONS							
GLOBAL MODEL	CIRCUIT SCHEMATIC	RESISTOR CIRCUIT W AT 70 °C	PACKAGE POWER W AT 70 °C	TOLERANCE ± %	RESISTANCE VALUES Ω	OPERATING VOLTAGE VDC	TEMPERATURE COEFFICIENT ± ppm/°C
SOGC16	45	0.1	1.6	2	180, 270, 820	50 max	100
	46	0.1	1.6	2	330, 150, 330	50 max	100
SOGC20	45	0.1	2.0	2	180, 270, 820	50 max	100
	46	0.1	2.0	2	330, 150, 330	50 max	100

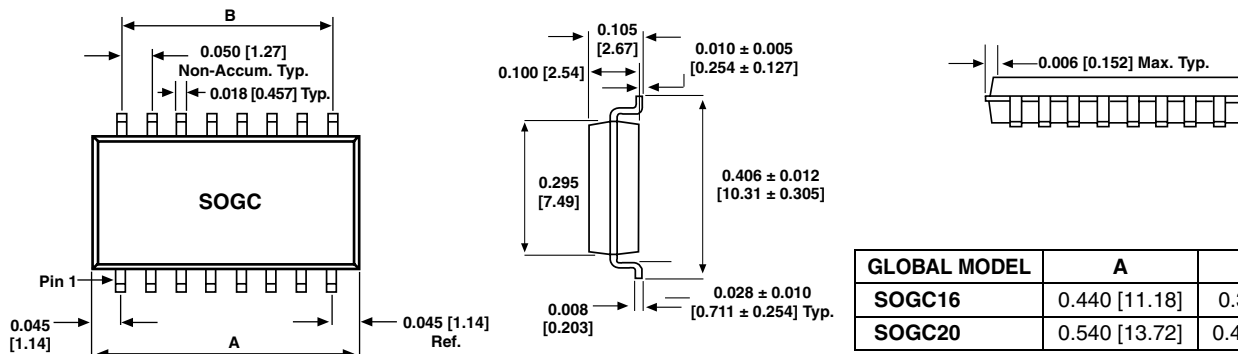
TECHNICAL SPECIFICATIONS			
PARAMETER	UNIT	SOGC16	SOGC20
Package Power Rating: (Maximum at + 70°C)	W	1.6	2.0
TC Tracking: (- 55°C to + 125°C)	ppm/°C	± 50	
Voltage Coefficient of Resistance:	ppm/V	< 50 typical.	
Maximum Operating Voltage:	VDC	50	
Operating Temperature Range:	°C	- 55 to + 125	
Storage Temperature Range:	°C	- 55 to + 150	

MECHANICAL SPECIFICATIONS	
Marking	Model number, schematic number, value, tolerance, pin 1 indicator, date code
Marking Resistance to Solvents	Permanency testing per MIL-STD-202, Method 215
Maximum Solder Reflow Temperature	+ 255 °C
Solderability	Per MIL-STD-202, Method 208E
Terminals	Copper alloy. Solder dipped terminal
Body:	Molded epoxy



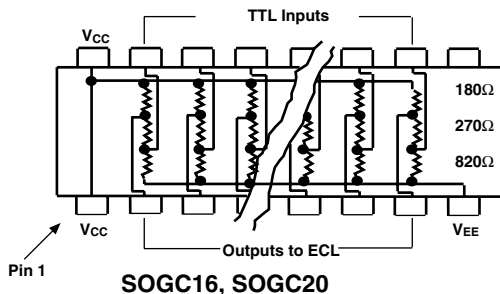
\* Pb containing terminations are not RoHS compliant, exemptions may apply

### DIMENSIONS in inches [millimeters]



### CIRCUIT APPLICATIONS

#### 45 Schematic

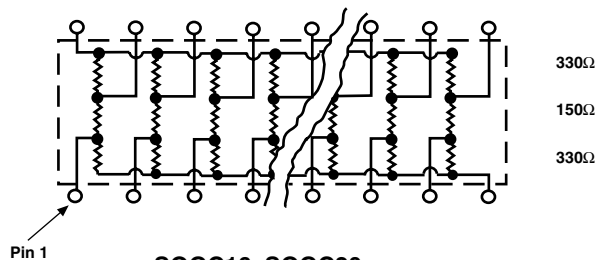


SOGC16, SOGC20

#### TTL to ECL translator

The SOGCxx45 network consists of resistors of 3 different values, internally divided into 6 or 8 identical three (3) resistor sections for TTL to ECL translation.

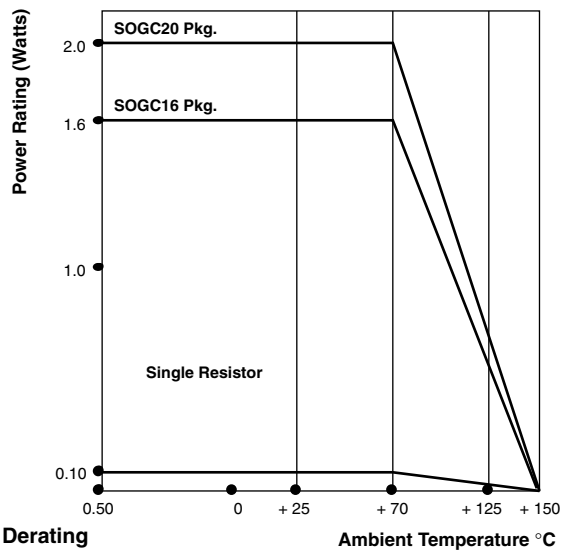
#### 46 Schematic



SOGC16, SOGC20

#### SCSI-BUS signal terminator

The SOGCxx46 network consists of resistors of 2 different values, internally divided into 7 or 9 identical three (3) resistor sections for SCSI-BUS terminator applications.



Derating

Ambient Temperature °C

### PERFORMANCE

TEST	MAX. ΔR (TYPICAL TEST LOTS)
Power Conditioning	± 0.50 % ΔR
Thermal Shock	± 0.50 % ΔR
Short Time Overload	± 0.25 % ΔR
Low Temperature Operation	± 0.25 % ΔR
Moisture Resistance	± 0.50 % ΔR
Resistance to Soldering Heat	± 0.25 % ΔR
Shock	± 0.25 % ΔR
Vibration	± 0.25 % ΔR
Load Life	± 0.50 % ΔR
Terminal Strength	± 0.25 % ΔR
Insulation Resistance	10 000 Megohm (minimum)
Dielectric Withstanding Voltage	No evidence of arcing or damage (200 V RMS for 1 minute)

\* Test methods per MIL-STD-202



## Disclaimer

All product specifications and data are subject to change without notice.

Vishay Intertechnology, Inc., its affiliates, agents, and employees, and all persons acting on its or their behalf (collectively, "Vishay"), disclaim any and all liability for any errors, inaccuracies or incompleteness contained herein or in any other disclosure relating to any product.

Vishay disclaims any and all liability arising out of the use or application of any product described herein or of any information provided herein to the maximum extent permitted by law. The product specifications do not expand or otherwise modify Vishay's terms and conditions of purchase, including but not limited to the warranty expressed therein, which apply to these products.

No license, express or implied, by estoppel or otherwise, to any intellectual property rights is granted by this document or by any conduct of Vishay.

The products shown herein are not designed for use in medical, life-saving, or life-sustaining applications unless otherwise expressly indicated. Customers using or selling Vishay products not expressly indicated for use in such applications do so entirely at their own risk and agree to fully indemnify Vishay for any damages arising or resulting from such use or sale. Please contact authorized Vishay personnel to obtain written terms and conditions regarding products designed for such applications.

Product names and markings noted herein may be trademarks of their respective owners.



Компания «ЭлектроПласт» предлагает заключение долгосрочных отношений при поставках импортных электронных компонентов на взаимовыгодных условиях!

Наши преимущества:

- Оперативные поставки широкого спектра электронных компонентов отечественного и импортного производства напрямую от производителей и с крупнейших мировых складов;
- Поставка более 17-ти миллионов наименований электронных компонентов;
- Поставка сложных, дефицитных, либо снятых с производства позиций;
- Оперативные сроки поставки под заказ (от 5 рабочих дней);
- Экспресс доставка в любую точку России;
- Техническая поддержка проекта, помощь в подборе аналогов, поставка прототипов;
- Система менеджмента качества сертифицирована по Международному стандарту ISO 9001;
- Лицензия ФСБ на осуществление работ с использованием сведений, составляющих государственную тайну;
- Поставка специализированных компонентов (Xilinx, Altera, Analog Devices, Intersil, Interpoint, Microsemi, Aeroflex, Peregrine, Syfer, Eurofarad, Texas Instrument, Miteq, Cobham, E2V, MA-COM, Hittite, Mini-Circuits, General Dynamics и др.);

Помимо этого, одним из направлений компании «ЭлектроПласт» является направление «Источники питания». Мы предлагаем Вам помощь Конструкторского отдела:

- Подбор оптимального решения, техническое обоснование при выборе компонента;
- Подбор аналогов;
- Консультации по применению компонента;
- Поставка образцов и прототипов;
- Техническая поддержка проекта;
- Защита от снятия компонента с производства.



#### Как с нами связаться

**Телефон:** 8 (812) 309 58 32 (многоканальный)

**Факс:** 8 (812) 320-02-42

**Электронная почта:** [org@eplast1.ru](mailto:org@eplast1.ru)

**Адрес:** 198099, г. Санкт-Петербург, ул. Калинина, дом 2, корпус 4, литера А.