

"High Frequency Ceramic Solutions"

802.11 Dual Band 2.45/5 GHz Mini Chip Antenna. WiFi, WLAN, IoT

P/N 2450AD14A5500

Detail Specification: 11/6/2018

Page 1 of 6

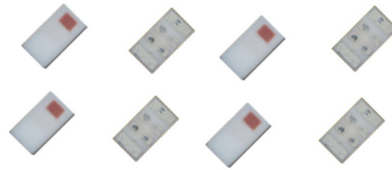
This is the Web version of this datasheet, for the full datasheet, please contact us at: <https://www.johansontechnology.com/ask-a-question>

General Specifications

Part Number	2450AD14A5500	
Frequency (MHz)	2400 - 2480	5150 - 5850
Ave. Rad Efficiency	60%	80%
Peak Gain (dBi typ.)	1.0 dBi typ. (XZ-Total)	4.0 dBi typ. (XZ-Total)
Average Gain (dBi typ.)	-3.5 dBi typ. (XZ-Total)	-2.5 dBi typ. (XZ-Total)
Return Loss (dB)	6 min.	6 min.
Impedance	50 Ω	
Input Power	2 Watts max. (CW)	

Let us help you with the antenna design, optimization, and tuning!

<https://www.johansontechnology.com/ipc-antenna-services>



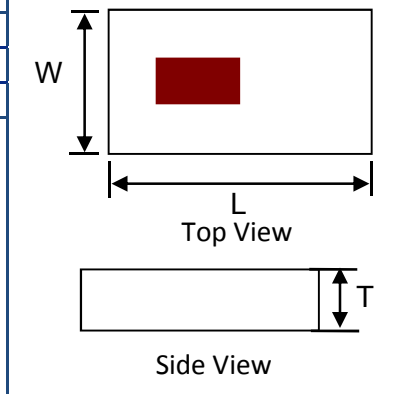
Storage Period	18 months max.
Storage Temperature	-40 to +85°C
Operating Temperature	-40 to +85°C
Reel Quantity	4000pcs

Part Number Explanation

P/N Suffix	Packing Style	Bulk (loose)	Suffix = S	e.g. 2450AD14A5500S
		T & R	Suffix = T	e.g. 2450AD14A5500T
		100% Tin	Suffix = T or S	e.g. 2450AD14A5500(T or S)
	Evaluation Board	2450AD14A5500-EB1SMA & 2450AD14A5500-EB2SMA		

Mechanical Dimensions

	In	mm
L	0.063 ± 0.004	1.60 ± 0.10
W	0.031 ± 0.004	0.80 ± 0.10
T	0.016 max.	0.40 max.



Terminal Configuration

No.	Function
1	GND
2	FEED
3	NC
4	NC

Top View looking "through" the component

If you'd like the complete datasheet which includes detailed gain performance, layout guidelines, application notes, small WiFi application layout, send us as message at:

<https://www.johansontechnology.com/ask-a-question>

As a bonus, you'll be assigned an RF Engineer to assist you in the design for free!

Johanson Technology, Inc. reserves the right to make design changes without notice.

All sales are subject to Johanson Technology, Inc. terms and conditions.

802.11 Dual Band 2.45/5 GHz Mini Chip Antenna. WiFi, WLAN, IoT

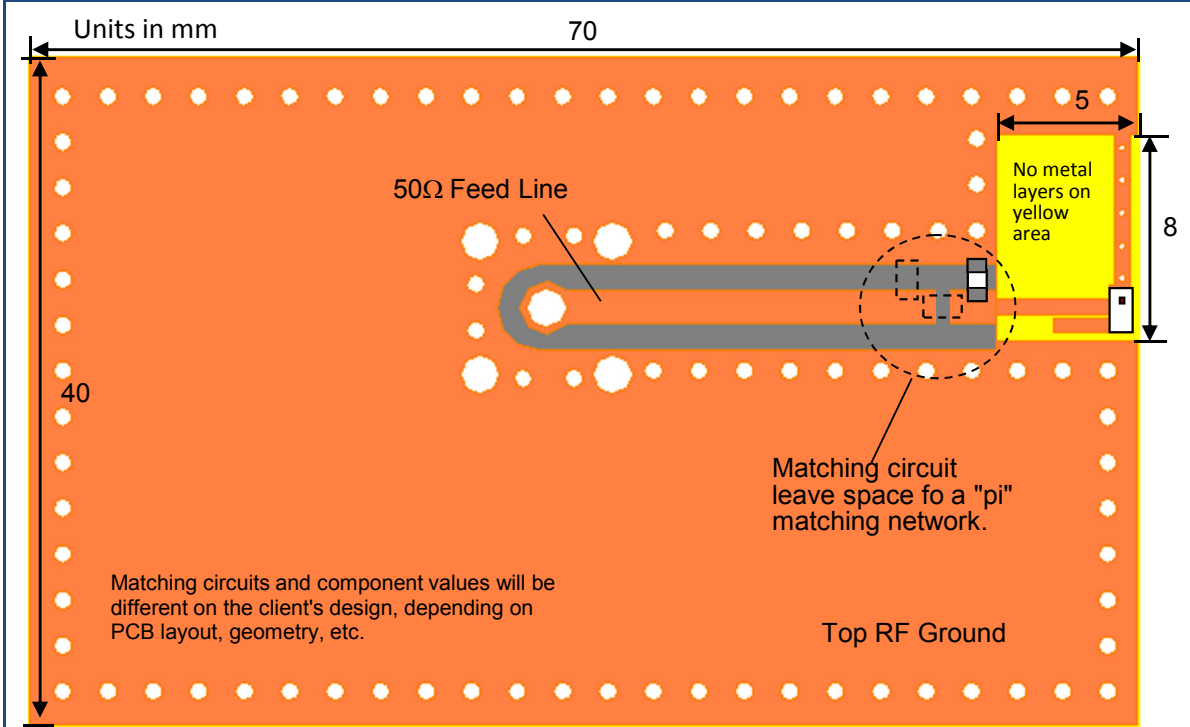
P/N 2450AD14A5500

Detail Specification: 11/6/2018

Page 2 of 6

This is the Web version of this datasheet, for the full datasheet, please contact us at: <https://www.johansontechnology.com/ask-a-question>

Mounting Considerations 1: Evaluation Board, 65x70mm (Scenario 1 Terminal Configuration)



To order the ABOVE pre-tuned 50Ω EVB with a female SMA connector click here: <https://www.johansontechnology.com/request-a-sample>

Would you like the layout file of the above? Have antenna tuning issues? Please contact us if you have any questions regarding the implementation of this antenna in your PCB's layout. We'll be happy to guide you to maximize the antenna's performance.

If you'd like the complete datasheet which includes detailed gain performance, layout guidelines, application notes, small WiFi application layout, send us as message at:

<https://www.johansontechnology.com/ask-a-question>

As a bonus, you'll be assigned an RF Engineer to assist you in the design for free!

Johanson Technology, Inc. reserves the right to make design changes without notice.
All sales are subject to Johanson Technology, Inc. terms and conditions.

802.11 Dual Band 2.45/5 GHz Mini Chip Antenna. WiFi, WLAN, IoT

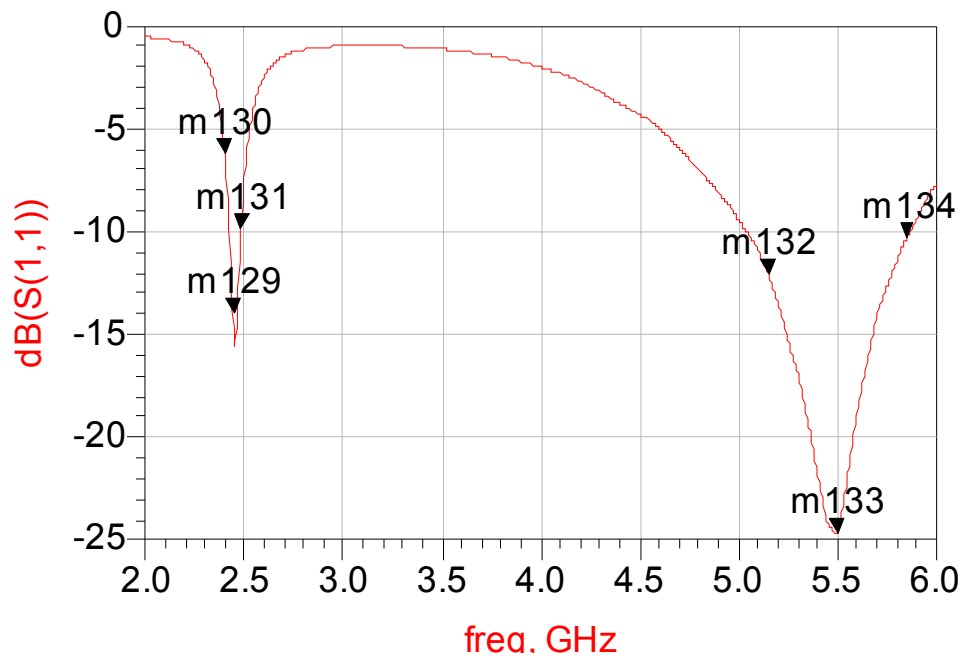
P/N 2450AD14A5500

Detail Specification: 11/6/2018

Page 3 of 6

This is the Web version of this datasheet, for the full datasheet, please contact us at: <https://www.johansontechnology.com/ask-a-question>

Mounting Considerations 2: Typical Electrical Performance (T=25°C)



If you'd like the complete datasheet which includes detailed gain performance, layout guidelines, application notes, small WiFi application layout, send us as message at:

<https://www.johansontechnology.com/ask-a-question>

As a bonus, you'll be assigned an RF Engineer to assist you in the design for free!

Johanson Technology, Inc. reserves the right to make design changes without notice.
All sales are subject to Johanson Technology, Inc. terms and conditions.

802.11 Dual Band 2.45/5 GHz Mini Chip Antenna. WiFi, WLAN, IoT

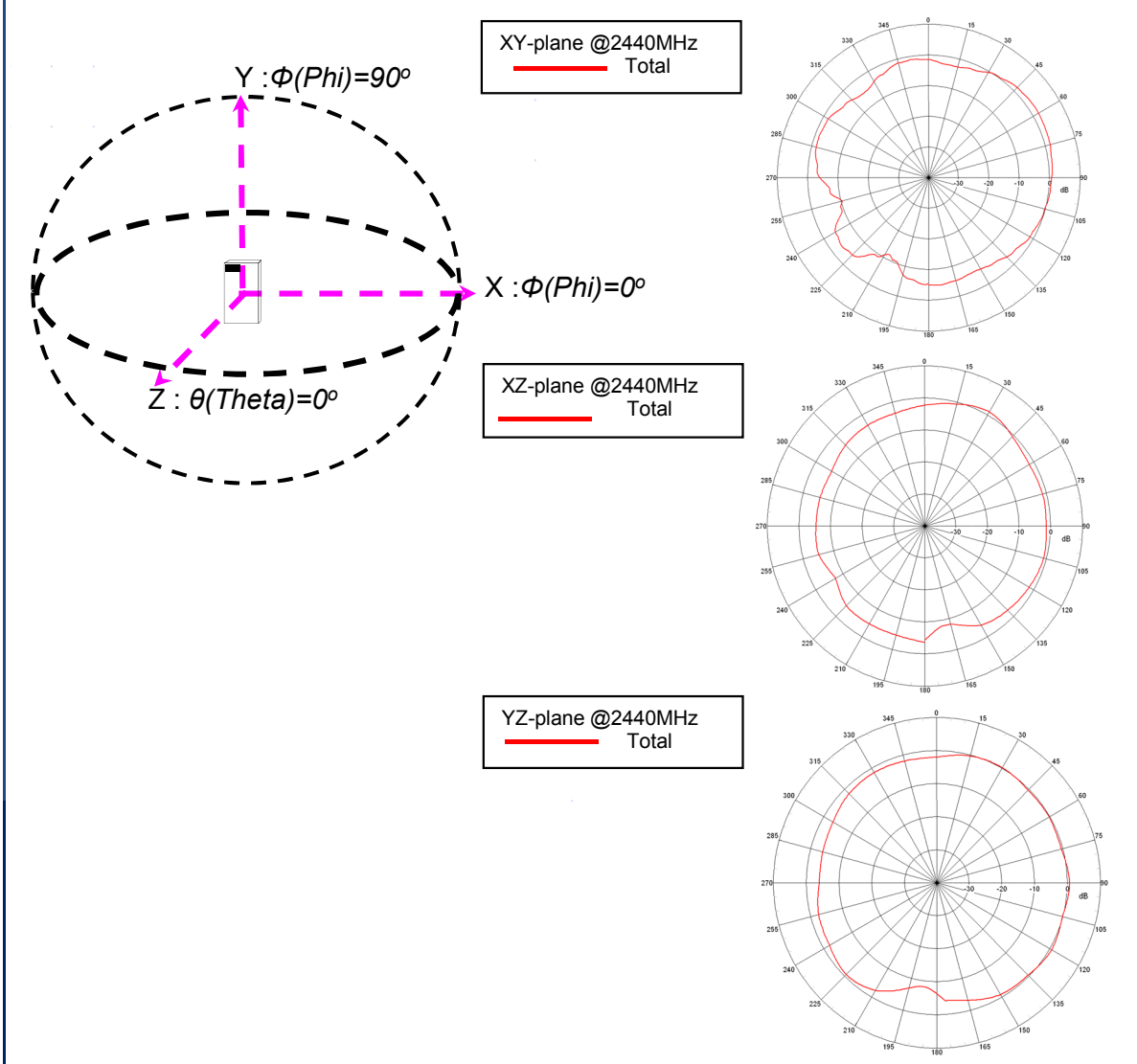
P/N 2450AD14A5500

Detail Specification: 11/6/2018

Page 4 of 6

This is the Web version of this datasheet, for the full datasheet, please contact us at: <https://www.johansontechnology.com/ask-a-question>

Typical EM Radiation Performance @ 2.44GHz (T=25°C)



If you'd like the complete datasheet which includes detailed gain performance, layout guidelines, application notes, small WiFi application layout, send us as message at:

<https://www.johansontechnology.com/ask-a-question>

As a bonus, you'll be assigned an RF Engineer to assist you in the design for free!

Johanson Technology, Inc. reserves the right to make design changes without notice.

All sales are subject to Johanson Technology, Inc. terms and conditions.

802.11 Dual Band 2.45/5 GHz Mini Chip Antenna. WiFi, WLAN, IoT

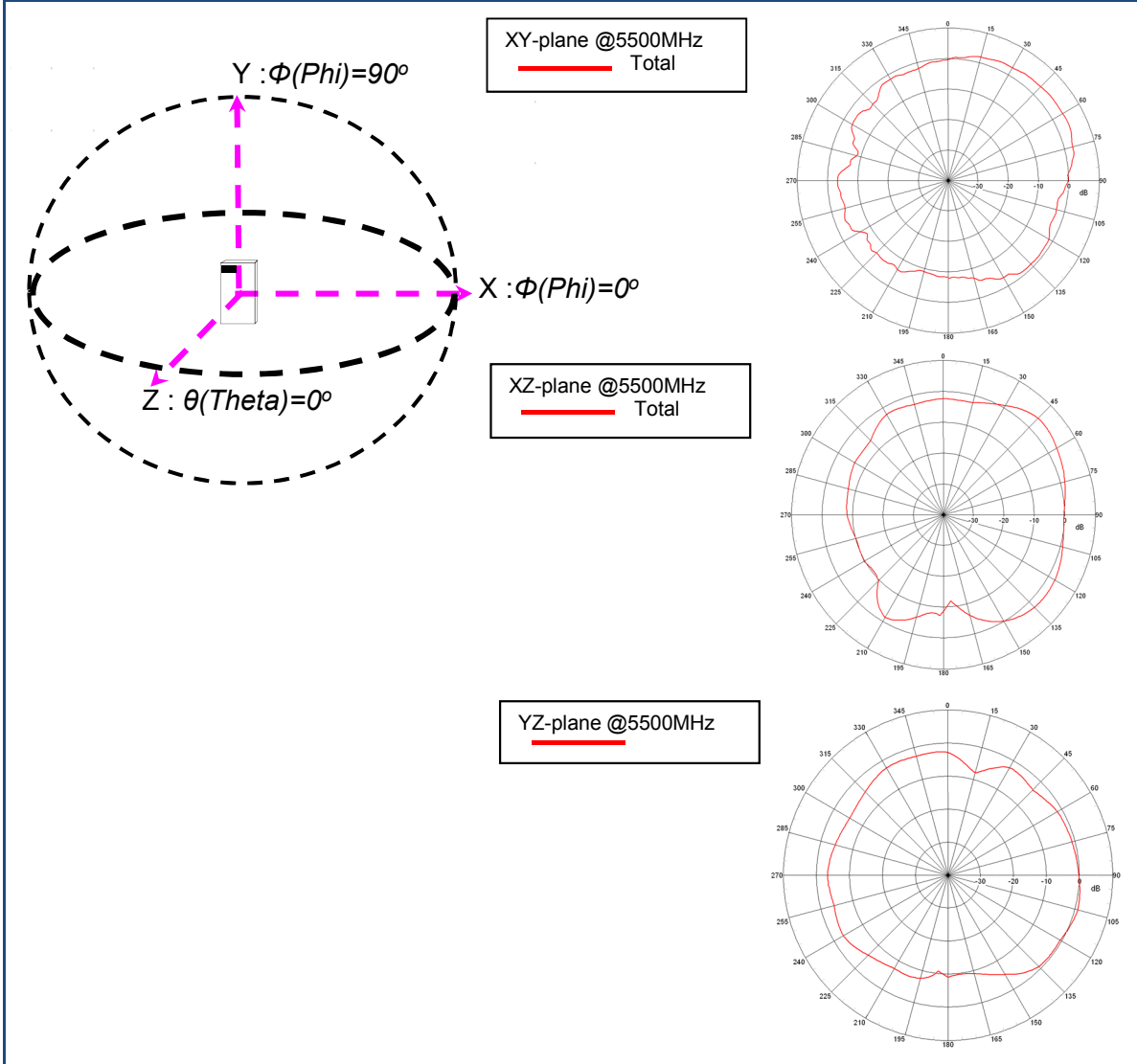
P/N 2450AD14A5500

Detail Specification: 11/6/2018

Page 5 of 6

This is the Web version of this datasheet, for the full datasheet, please contact us at: <https://www.johansontechnology.com/ask-a-question>

Typical EM Radiation Performance @ 5.50 GHz (T=25°C)



If you'd like the complete datasheet which includes detailed gain performance, layout guidelines, application notes, small WiFi application layout, send us as message at:

<https://www.johansontechnology.com/ask-a-question>

As a bonus, you'll be assigned an RF Engineer to assist you in the design for free!

Johanson Technology, Inc. reserves the right to make design changes without notice.
All sales are subject to Johanson Technology, Inc. terms and conditions.



Limited
Web
Version

"High Frequency Ceramic Solutions"

802.11 Dual Band 2.45/5 GHz Mini Chip Antenna. WiFi, WLAN, IoT

P/N 2450AD14A5500

Detail Specification: 11/6/2018

Page 6 of 6

This is the Web version of this datasheet, for the full datasheet, please contact us at: <https://www.johansontechnology.com/ask-a-question>

Antenna tuning, optimization, and validation services:

<https://www.johansontechnology.com/ipc-antenna-services>

For more antennas and to download measured S-parameters, go to:

<https://www.johansontechnology.com/antennas>

For more information about our diplexers:

<https://www.johansontechnology.com/diplexers>

Soldering Information

<https://www.johansontechnology.com/ipcsoldering-profile>

MSL Info

<https://www.johansontechnology.com/msl-rating>

Packaging information

<https://www.johansontechnology.com/tape-reel-packaging>

For layout review contact our Applications Team at:

<https://www.johansontechnology.com/ask-a-question>

RoHS Compliance

<https://www.johansontechnology.com/rohs-compliance>

Need help designing the antenna in? Use our antenna design services!

<https://www.johansontechnology.com/ipc-antenna-services>

2 Free layout reviews and if you need us to tune and characterize the antenna on your product (inside anechoic chamber) we can do that too. Small lab fee may apply for the latter.

If you'd like the complete datasheet which includes detailed gain performance, layout guidelines, application notes, small WiFi application layout, send us as message at:

<https://www.johansontechnology.com/ask-a-question>

As a bonus, you'll be assigned an RF Engineer to assist you in the design for free!

Johanson Technology, Inc. reserves the right to make design changes without notice.
All sales are subject to Johanson Technology, Inc. terms and conditions.



<https://www.johansontechnology.com>

4001 Calle Tecate • Camarillo, CA 93012 • TEL 805.389.1166 FAX 805.389.1821

Ver. 2.2

2018 Johanson Technology, Inc. All Rights Reserved



Компания «ЭлектроПласт» предлагает заключение долгосрочных отношений при поставках импортных электронных компонентов на взаимовыгодных условиях!

Наши преимущества:

- Оперативные поставки широкого спектра электронных компонентов отечественного и импортного производства напрямую от производителей и с крупнейших мировых складов;
- Поставка более 17-ти миллионов наименований электронных компонентов;
- Поставка сложных, дефицитных, либо снятых с производства позиций;
- Оперативные сроки поставки под заказ (от 5 рабочих дней);
- Экспресс доставка в любую точку России;
- Техническая поддержка проекта, помощь в подборе аналогов, поставка прототипов;
- Система менеджмента качества сертифицирована по Международному стандарту ISO 9001;
- Лицензия ФСБ на осуществление работ с использованием сведений, составляющих государственную тайну;
- Поставка специализированных компонентов (Xilinx, Altera, Analog Devices, Intersil, Interpoint, Microsemi, Aeroflex, Peregrine, Syfer, Eurofarad, Texas Instrument, Miteq, Cobham, E2V, MA-COM, Hittite, Mini-Circuits, General Dynamics и др.);

Помимо этого, одним из направлений компании «ЭлектроПласт» является направление «Источники питания». Мы предлагаем Вам помощь Конструкторского отдела:

- Подбор оптимального решения, техническое обоснование при выборе компонента;
- Подбор аналогов;
- Консультации по применению компонента;
- Поставка образцов и прототипов;
- Техническая поддержка проекта;
- Защита от снятия компонента с производства.



Как с нами связаться

Телефон: 8 (812) 309 58 32 (многоканальный)

Факс: 8 (812) 320-02-42

Электронная почта: org@eplast1.ru

Адрес: 198099, г. Санкт-Петербург, ул. Калинина, дом 2, корпус 4, литера А.