

FEATURES

- Ø 0.500 mm active area
- Low noise
- High gain
- Long term stability

DESCRIPTION

The AD500-9-400M-TO5 is an Avalanche Photodiode Amplifier Hybrid containing a 0.196 mm² active area APD chip integrated with an internal transimpedance amplifier. Hermetically packaged in a TO-5 with a borosilicate glass window cap.

APPLICATIONS

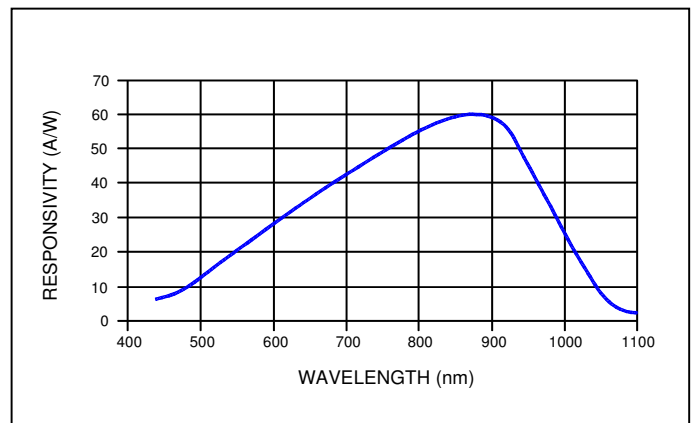
- Lidar
- Analytical instruments
- Medical equipment



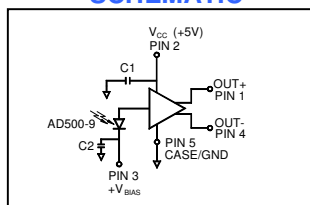
ABSOLUTE MAXIMUM RATING

SYMBOL	PARAMETER	MIN	MAX	UNITS
T _{STG}	Storage Temp	-55	+125	°C
T _{OP}	Operating Temp	0	+60	°C
T _{SOLDERING}	Soldering Temp	-	+240	°C
P	Power Dissipation	-	360	mW
V _{CC}	Single Supply Voltage	+3.0	+5.5	V
I _{CC}	Supply Current	-	63	mA

SPECTRAL RESPONSE at M = 100



SCHEMATIC



ELECTRO-OPTICAL CHARACTERISTICS @ 23° C (V_{CC} = single supply +3.3V, R_L = 100Ω unless otherwise specified)

SYMBOL	CHARACTERISTIC	TEST CONDITIONS	MIN	TYP	MAX	UNITS
f _{-3dB}	Frequency Response	-3dB @ 905 nm	---	400	---	MHz
S	Sensitivity*	λ = 905 nm; M = 100	---	145	---	mV/μW
I _{CC}	Supply Current	Dark state	---	34	63	mA

* Sensitivity = APD responsivity (0.58 A/W X 100 gain) x TIA gain (2.5K)

Use US order number 05-051-01, or International order number 50049001 for breakdown voltage range of 160-200 Volts.
 Use US order number 05-051-02, or International order number 50049002 for breakdown voltage range of 200-240 Volts.

These devices are sensitive to electrostatic discharge. Please use ESD precautions when handling.

Disclaimer: Due to our policy of continued development, specifications are subject to change without notice.

AVALANCHE PHOTODIODE DATA @ 23 °C

SYMBOL	CHARACTERISTIC	TEST CONDITIONS	MIN	TYP	MAX	UNITS
I_D	Dark Current	M = 100 (see note 2)	---	0.8	5.0	nA
C	Capacitance	M = 100 (see note 2)	---	1.2	---	pF
V_{BR}	Breakdown Voltage (see note 1)	$I_D = 2 \mu A$	160	---	240	V
	Temperature Coefficient of V_{BR}		1.25	---	1.55	V/K
	Responsivity	M = 100; = 0 V; $\lambda = 905 \text{ nm}$	52	58	60	A/W
Δf_{3dB}	Bandwidth	-3dB	---	0.5	---	GHz
t_r	Rise Time	M = 100	---	0.55	---	ns
	Optimum Gain		50	60	---	
	"Excess Noise" factor	M = 100	---	2.5	---	
	"Excess Noise" index	M = 100	---	0.2	---	
	Noise Current	M = 100	---	1.0	---	pA/Hz ^{1/2}
	Max Gain		200	---	---	
NEP	Noise Equivalent Power	M = 100; $\lambda = 905 \text{ nm}$	---	2.0×10^{-14}	---	W/Hz ^{1/2}

Note 1: The following different breakdown voltage ranges are available: (160 – 200 V), (200 – 240 V).

Note 2: Measurement conditions: Setup of photo current 1 nA at M = 1 and irradiated by a 880 nm, 80 nm bandwidth LED. Increase the photo current up to 100 nA, (M = 100) by internal multiplication due to an increasing bias voltage.

TRANSIMPEDANCE AMPLIFIER DATA @ 25 °C

($V_{CC} = +3.0 \text{ V to } 5.5 \text{ V}$, $T_A = 0^\circ\text{C to } 70^\circ\text{C}$, 100 Ω load between OUT+ and OUT-. Typical values are at $T_A = 25^\circ\text{C}$, $V_{CC} = +3.3 \text{ V}$)

PARAMETER	TEST CONDITIONS	MIN	TYP	MAX	UNITS
Supply Voltage		3	5	5.5	V
Supply Current		---	34	63	mA
Transimpedance	Differential, measured with 40 μA p-p signal	2.10	2.75	3.40	k Ω
Output impedance	Single ended per side	48	50	52	Ω
Maximum Differential Output Voltage	Input = 2 mA p-p with 100 Ω differential termination	220	380	575	mV p-p
AC Input Overload		2	---	---	mA p-p
DC Input Overload		1	---	---	mA
Input Referred RMS Noise	TO-5 package, see note 4	---	490	668	nA
Input Referred Noise Density	See note 4	---	11	---	pA/Hz ^{1/2}
Small signal bandwidth	Source capacitance = 0.85 pF, see note 3	1.525	2.00	---	GHz
Low Frequency Cutoff	-3 dB, input < 20 μA DC	---	30	---	kHz
Transimpedance Linear Range	Peak to peak 0.95 < linearity < 1.05	40	---	---	μA p-p
Power Supply Rejection Ratio (PSRR)	Output referred, f < 2 MHz, PSSR = -20 Log ($\Delta V_{out} / \Delta V_{CC}$)	---	50	---	dB

Note 3: Source capacitance for AD500-9-400M-TO5 is the capacitance of APD.

Note 4: Input referred noise is calculated as RMS output noise / (gain at f = 10 Mhz). Noise density is (input referred noise)/ $\sqrt{\text{bandwidth}}$.

TRANSFER CHARACTERISTICS

The circuit used is an avalanche photodiode directly coupled to a high speed data handling transimpedance amplifier. The output of the APD (light generated current) is applied to the input of the amplifier. The amplifier output is in the form of a differential voltage pulsed signal.

The APD responsivity curve is provided in Fig. 2. The term Amps/Watt involves the area of the APD and can be expressed as Amps/mm²/Watts/mm², where the numerator applies to the current generated divided by the area of the detector, the denominator refers to the power of the radiant energy present per unit area. As an example assume a radiant input of 1 microwatt at 905 nm. The APD's corresponding responsivity is 0.58 A/W.

If energy in = 1 μW , then the current from the APD = (0.58 A/W) \times ($1 \times 10^{-6} W$) = 0.58 μA . We can then factor in the typical gain of the APD of 100, making the input current to the amplifier 58 μA . From Fig. 5 we can see the amplifier output will be approximately 100 mV p-p.

APPLICATION NOTES

The AD500-9-400M-TO5 is a high speed optical data receiver. It incorporates an internal transimpedance amplifier with an avalanche photodiode.

This detector requires +3.5 V to +5.0 V voltage supply for the amplifier and a high voltage supply (100-240 V) for the APD. The internal APD follows the gain curve published for the AD500-9-TO52-S1 avalanche photodiode. The transimpedance amplifier provides differential output signals in the range of 200 millivolts differential.

In order to achieve highest gain, the avalanche photodiode needs a positive bias voltage (Fig. 1). However, a current limiting resistor must be placed in series with the photodiode bias voltage to limit the current into the transimpedance amplifier. **Failure to limit this current may result in permanent failure of the device.** The suggested initial value for this limiting resistor is 390 K Ω m.

When using this receiver, good high frequency placement and routing techniques should be followed in order to achieve maximum frequency response. This includes the use of bypass capacitors, short leads and careful attention to impedance matching. The large gain bandwidth values of this device also demand that good shielding practices be used to avoid parasitic oscillations and reduce output noise.

Fig. 1: APD GAIN vs BIAS VOLTAGE

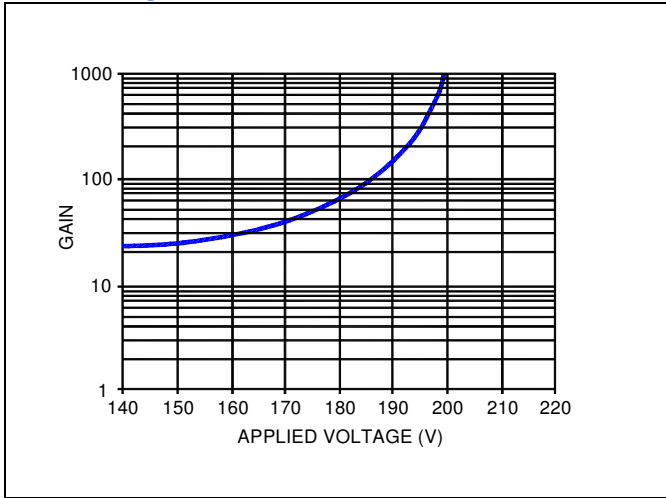


Fig. 2: APD SPECTRAL RESPONSE (M = 1)

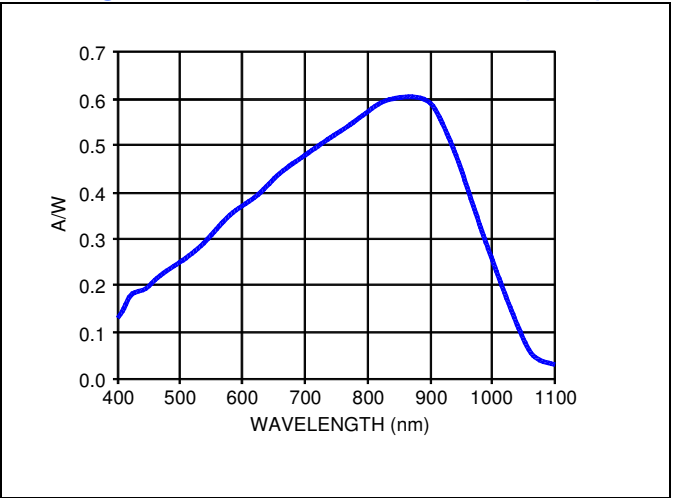


Fig. 3 : AMPLIFIER OUTPUT vs TEMPERATURE

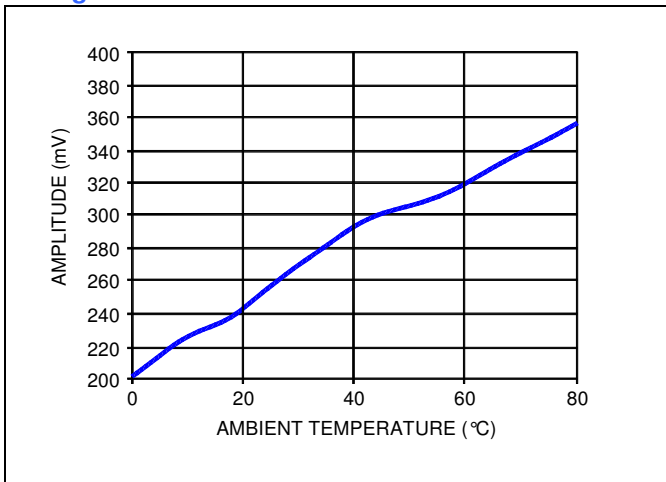


Fig.4 : APD CAPACITANCE vs BIAS VOLTAGE

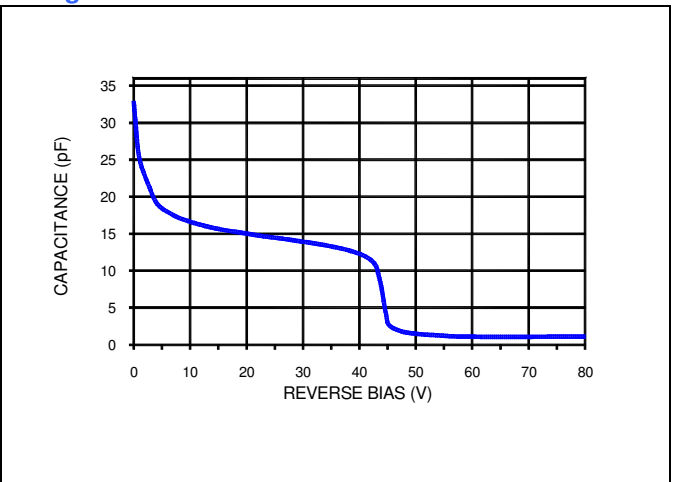


Fig. 5: AMPLIFIER TRANSFER FUNCTION

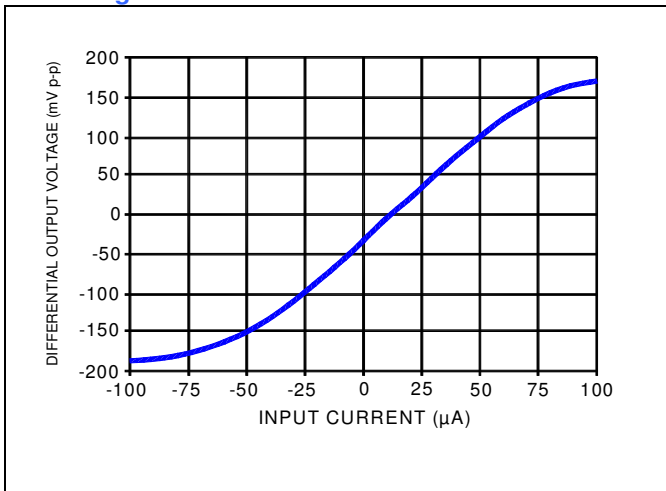
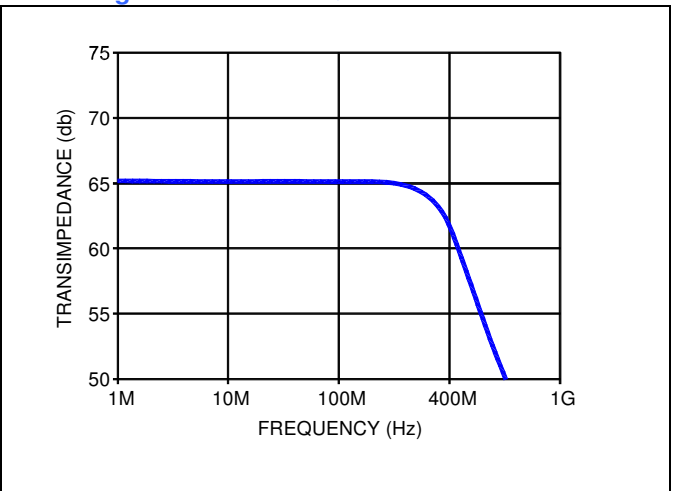


Fig. 6: TOTAL FREQUENCY RESPONSE



USA:
 First Sensor, Inc.
 5700 Corsa Avenue, #105
 Westlake Village, CA 91362 USA
 T + 818 706-3400
 F + 818 889-7053
contact.us@first-sensor.com
www.first-sensor.com



International sales:
 First Sensor AG
 Peter-Behrens-Str. 15
 12459 Berlin, Germany
 T + 49 30 6399 2399
 F + 49 30 639923-752
sales.opto@first-sensor.com
www.first-sensor.com



Компания «ЭлектроПласт» предлагает заключение долгосрочных отношений при поставках импортных электронных компонентов на взаимовыгодных условиях!

Наши преимущества:

- Оперативные поставки широкого спектра электронных компонентов отечественного и импортного производства напрямую от производителей и с крупнейших мировых складов;
- Поставка более 17-ти миллионов наименований электронных компонентов;
- Поставка сложных, дефицитных, либо снятых с производства позиций;
- Оперативные сроки поставки под заказ (от 5 рабочих дней);
- Экспресс доставка в любую точку России;
- Техническая поддержка проекта, помощь в подборе аналогов, поставка прототипов;
- Система менеджмента качества сертифицирована по Международному стандарту ISO 9001;
- Лицензия ФСБ на осуществление работ с использованием сведений, составляющих государственную тайну;
- Поставка специализированных компонентов (Xilinx, Altera, Analog Devices, Intersil, Interpoint, Microsemi, Aeroflex, Peregrine, Syfer, Eurofarad, Texas Instrument, Miteq, Cobham, E2V, MA-COM, Hittite, Mini-Circuits, General Dynamics и др.);

Помимо этого, одним из направлений компании «ЭлектроПласт» является направление «Источники питания». Мы предлагаем Вам помощь Конструкторского отдела:

- Подбор оптимального решения, техническое обоснование при выборе компонента;
- Подбор аналогов;
- Консультации по применению компонента;
- Поставка образцов и прототипов;
- Техническая поддержка проекта;
- Защита от снятия компонента с производства.



Как с нами связаться

Телефон: 8 (812) 309 58 32 (многоканальный)

Факс: 8 (812) 320-02-42

Электронная почта: org@eplast1.ru

Адрес: 198099, г. Санкт-Петербург, ул. Калинина, дом 2, корпус 4, литера А.