



GETTING STARTED

Onion Omega2S Development Kit Getting Started Guide

Version 1.0

Omega2 IoT Computer

Revision History

Revision	Date	Description
1.0	March 17, 2018	Initial release

Table of Contents

1. Introduction	4
2. Hardware Overview	5
2.1 Omega2S Hardware Overview	5
2.1.1 Differences from the Omega2	6
2.2 SD Card Development Board Overview	7
2.3 eMMC Development Board Overview	8
3. Hardware Setup	9
4. First Time Setup	13
5. Using the Development Kit	13
5.1 Common Usage	13
5.1.1 Using GPIOs	13
5.1.2 Using USB Storage	13
5.1.3 Using an SD card	14
5.1.4 Rebooting the Omega2S	15
5.1.5 Factory Reset	15
5.2 Removing Omega2S from the Dev Board	16
6. Additional Resources	17
6.1 Hardware Setup Video	17
6.2 Omega2S Datasheet	17
6.3 Schematics	17
6.3.1 Development Board Schematics	17
6.3.2 Omega2S Reference Design Schematics	17

1. Introduction

The Omega2S Development Kit consists of the Omega2S, Onion's surface-mount Linux WiFi module, and the Development Board, meant to showcase the functionality of the Omega2S module and serve as a test-bed for initial product development.

The Omega2S is a highly integrated WiFi enabled, Linux module designed by Onion Corporation. It utilizes the Mediatek MT7688AN System on a Chip (SoC) which is based on the MIPS 24K CPU processor core. The SoC includes 802.11b/g/n Wi-Fi, making the Omega2S ideal for Internet of Things (IoT) applications and projects. In addition to the SoC, the module includes DDR2 DRAM, Flash memory, and all of the components necessary to allow this product to be a fully functional and complete device.

The Omega2S Development Board has an easy insertion socket for the Omega2S Module, and exposes all of the available Omega2S hardware I/O: including the USB Port, Ethernet Port, Dual Reset Functions, and Connectors Pins for all other I/O.

There are two versions available:

- Omega2S Development Kit - SD: SD Card Slot Version
- Omega2S Development Kit - eMMC: 8GB eMMC Memory Version

For easy development, the Development Board can be powered via the Micro-USB port. The Micro-USB port also allows for easy access to the Omega's command line, thanks to the on-board USB-to-Serial chip. Finally, the PCB trace WiFi antenna allows the Omega2S to connect to WiFi networks without the need for an external uFL antenna.

2. Hardware Overview

The Omega2S Development Kit consists of the Omega2S and the Development Board.

2.1 Omega2S Hardware Overview

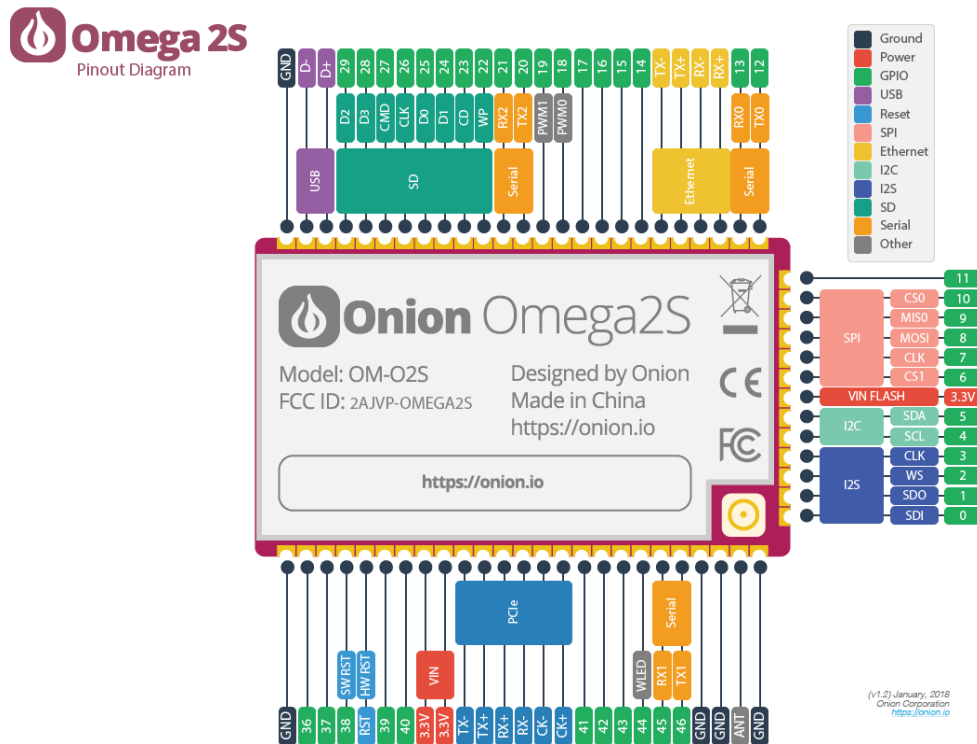
The Omega2S Module is a Surface Mount version of Onion Omega2 board, designed specifically for high volume commercial and industrial applications. It's low profile (only 2.8mm high) and gives you high flexibility and availability of designing your custom products with the power of Omega2S. It has 42 additional I/O pins, and a uFL connector for an external antennas.

It is available in two memory size versions, similar to the Omega2:

- Omega2S: 64 MB DRAM, 16 MB Flash
- Omega2S+: 128 MB DRAM, 32 MB Flash



Pinout Diagram:



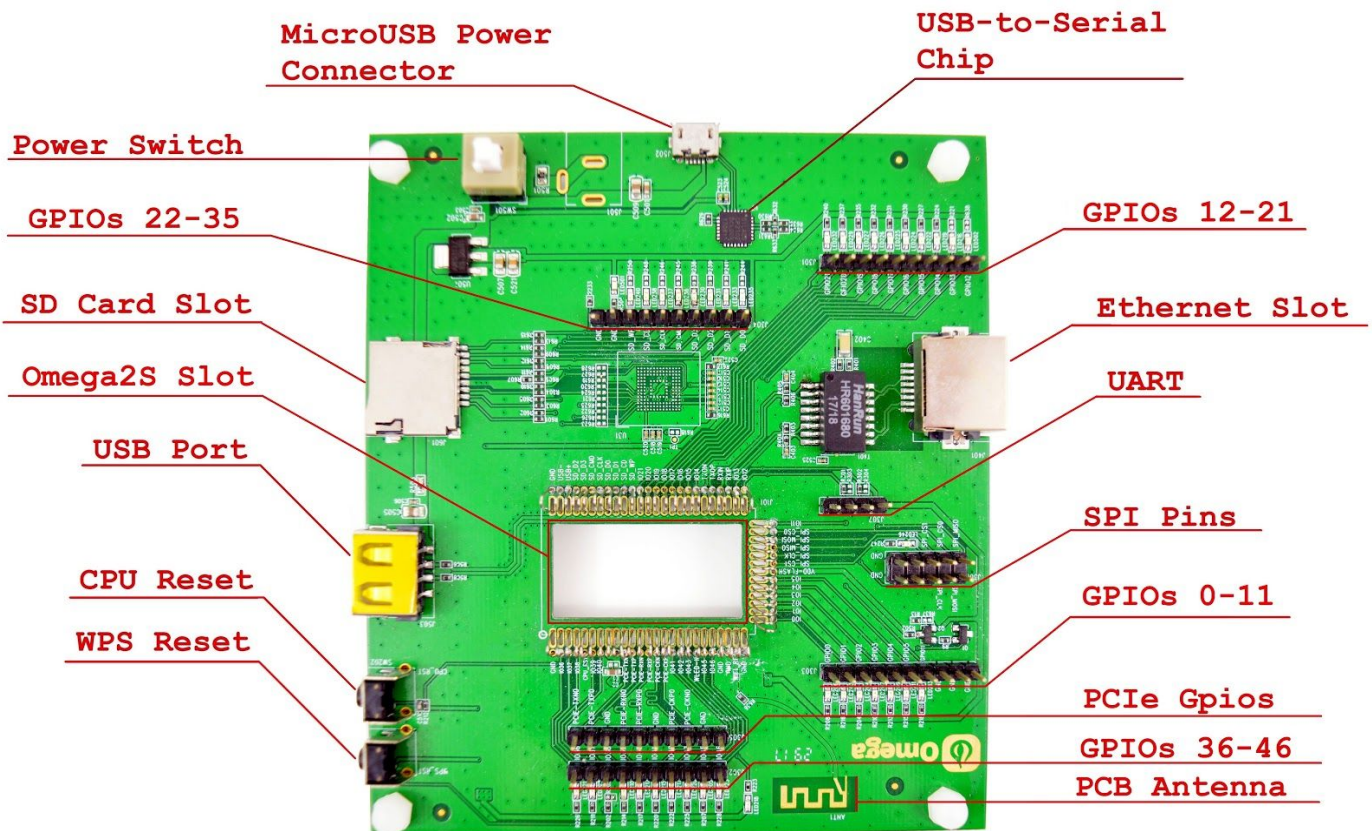
2.1.1 Differences from the Omega2

Other than the obvious form-factor differences from the through-hole Omega2, the Omega2S also features the following:

- Exposes more I/Os: 43 General Purpose I/Os (as opposed to the 21 available on the through-hole version)
- The additional exposed I/Os include:
 - All I/Os required for using an SD card slot or eMMC memory
 - Using 4 additional Ethernet ports - for a total of 5 ports
 - Access to UART2
 - Access to SPI CS0
- Does not feature a built-in SMT WiFi antenna - optimizing area and allowing the end-user the freedom to select between using the ANT I/O or the uFL connector

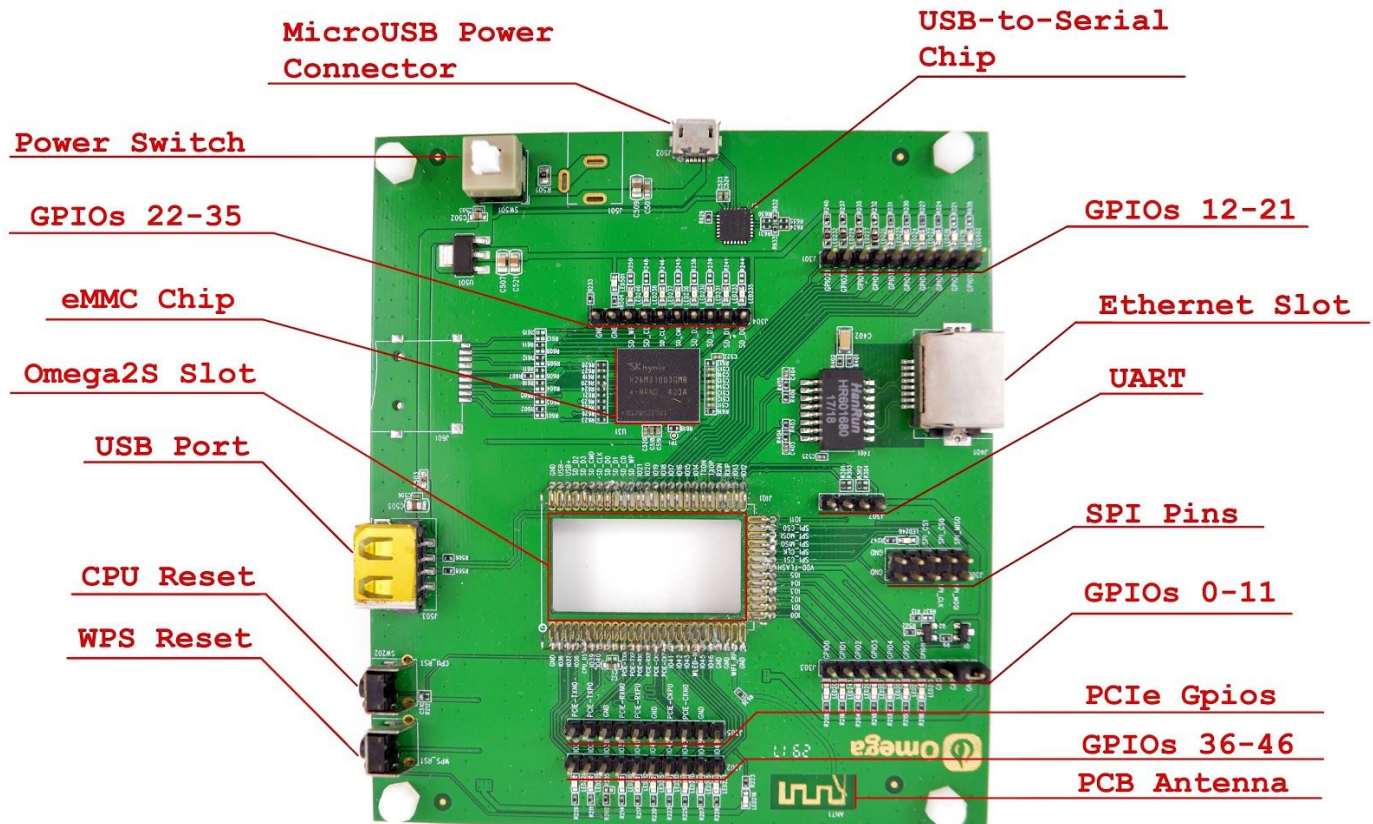
2.2 SD Card Development Board Overview

This version features an SD card slot.



2.3 eMMC Development Board Overview

This version features an on-board 8GB eMMC storage module. It does not feature an SD card slot as they are mutually exclusive.



3. Hardware Setup

Follow this guide in order to connect the Omega2S to the Development Board properly and power it up. We'll outline the suggested steps to perform the physical connection and power up the device.

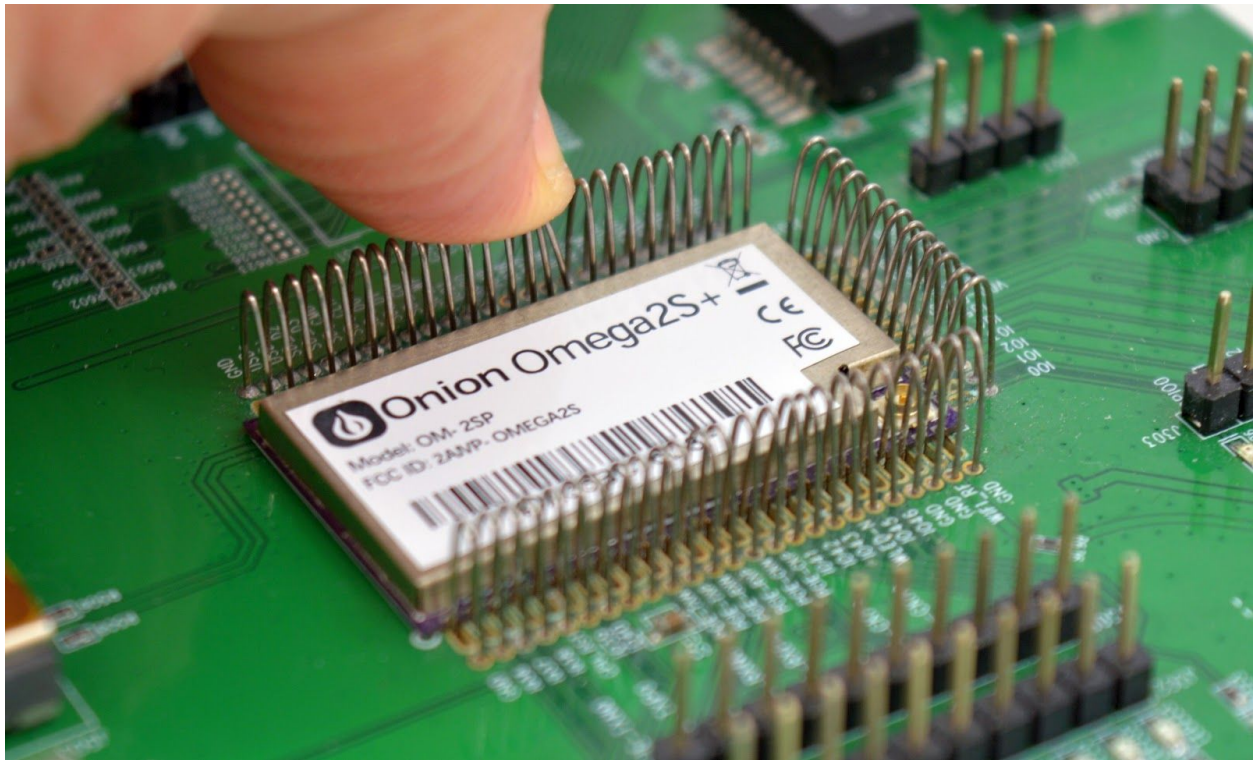
See our visual guide for more details: <https://youtu.be/aoYadArVJPw>

Steps:

- Insert Omega2S into the socket
 - Omega2S has 3 sides with pins, make sure to match the sides with pins to the rail-pins on the Dev Board socket
 - Make sure your Omega is plugged and pressed down to complete the connection

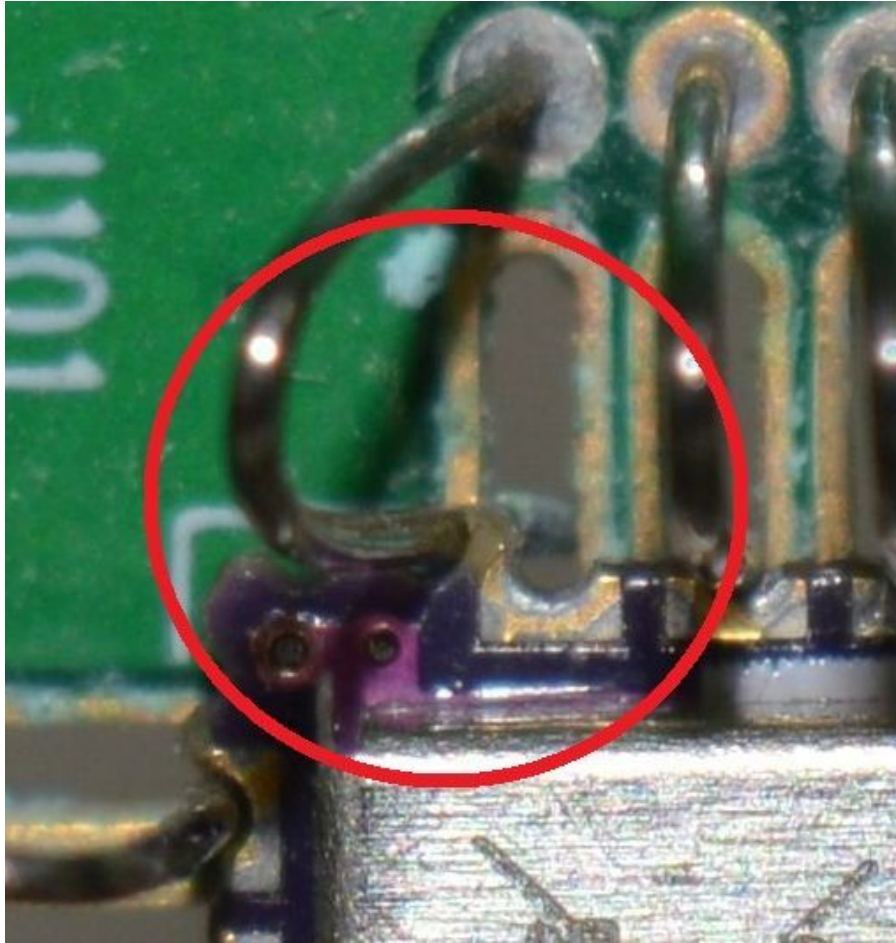


- Socket pin combing
 - Ensure the connection between the Omega2S and socket by using your thumb to comb the rail-pins of the Omega2S socket on the Development Board to avoid disconnected pins and undefined behavior (Please see the picture below)



- Refer to our visual guide for more clarity on the combing procedure:
<https://youtu.be/aoYadArVJPw>

- Always check that each rail-pin is connected to its corresponding Omega castellated socket before powering the device. ***The image below represents the incorrect positioning of the rail-pin:***



- Power up and turn on the Omega
 - Connect a Micro-USB cable to the Dev Board and turn on the power switch ON by pressing the white button down till it clicks
 - For best results, use a high-quality cable that is at most 2m (6ft) long
- Omega LED indicates booting
 - LED218 Blinks on Boot. Once booted, it will become solid, meaning that the Omega has completed its boot sequence.
 - LED243 Stays solid at all times when powered up



4. First Time Setup

When Omega2S has completed the boot sequence, LED218 will stop blinking and remain solid. This takes approximately 1 minute.

Since the Dev Board has a USB-to-Serial chip on-board, use USB connection to connect to the serial terminal.

- Please follow our guide on [how to connect to the Omega via Serial](#)
- Once a connection to the Omega is established, the Omega can be connected to a nearby WiFi network
 - Please follow the steps on [how to setup the Omega through the Command Line](#)

5. Using the Development Kit

Most Omega2 documentation applies to the Omega2S Development Kit as well:

<https://docs.onion.io/omega2-docs>

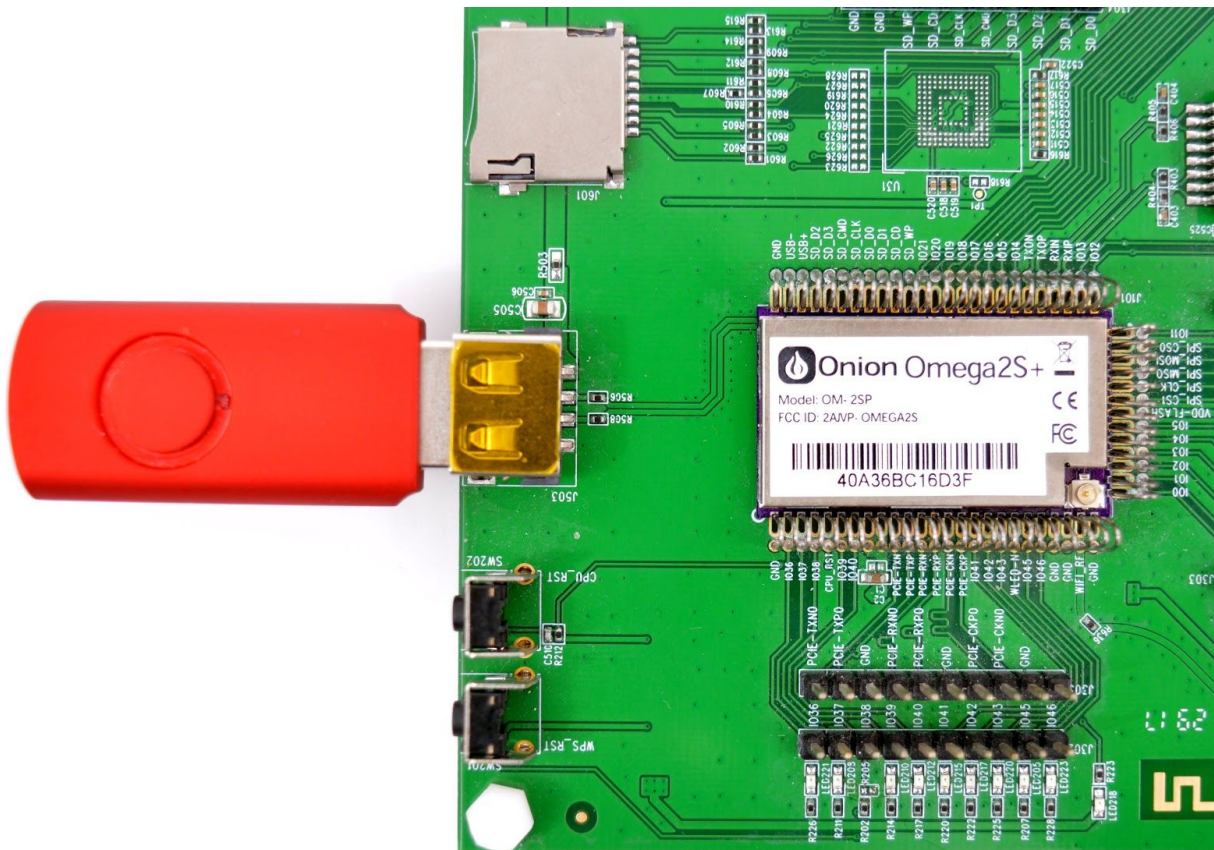
5.1 Common Usage

5.1.1 Using GPIOs

- To control the GPIO's of the Omega2S, follow the [guide on using the Omega's GPIOs](#)
- Each available GPIO has its own LED that serves as a status indicator.
 - Please note, the LED's are active LOW, so in order to activate them, pass logic 0 to the connected GPIO.

5.1.2 Using USB Storage

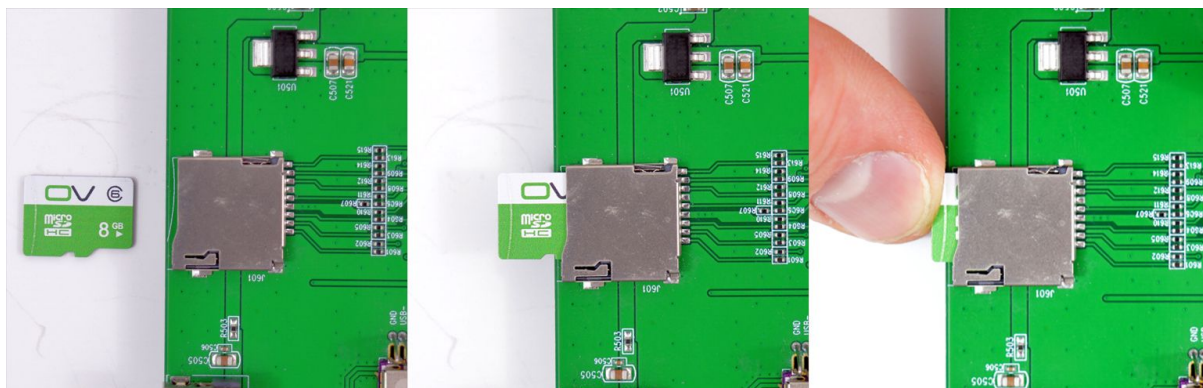
- The Dev Board has a USB Port that exposes the Omega's USB2.0 host port. This port can be used for USB storage devices, USB cameras, etc.



- Please follow [the guide on how to properly mount the USB device and customize the default configurations](#)
- It is also possible to:
 - Use a [swap file on external storage to extend the Omega's available memory](#)
 - [Move the OverlayFS to external storage](#), effectively running the Omega's OS from the external storage device, greatly expanding the amount of available storage

5.1.3 Using an SD card

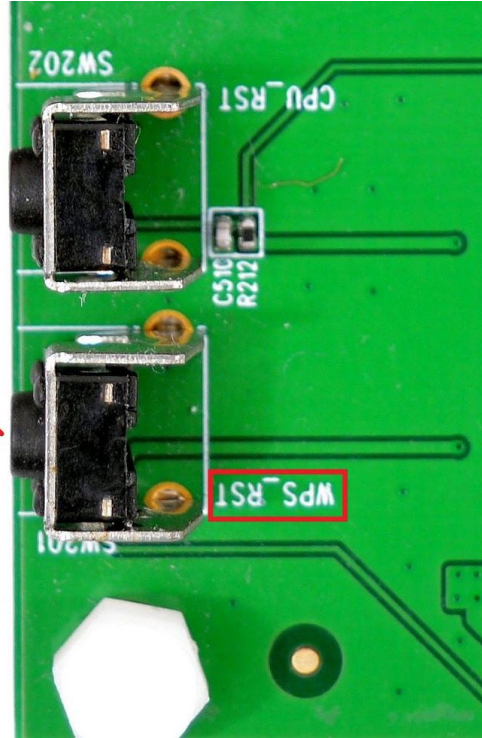
- Omega2S Development Kit SD Card Slot Version comes with an on-board SD card slot



- SD Cards up to 128GB are supported
- For further details and information about using SD cards, follow our guide on [using an SD Card](#)

5.1.4 Rebooting the Omega2S

WPS Reset



- There are two ways to initiate a reboot of the Omega2S:
 - *Software*: From your terminal screen, run the `reboot` command
 - *Hardware*: Perform a quick press and release of the WPS Reset push-button
- To learn more, please read our documentation on [rebooting your Omega](#)

5.1.5 Factory Reset

The Omega2S can be restored to a “factory” state in case of data corruption or lost configuration files. Performing a Factory Restore on the Omega will revert all files to the default for the currently installed firmware, **all other files will be deleted**.

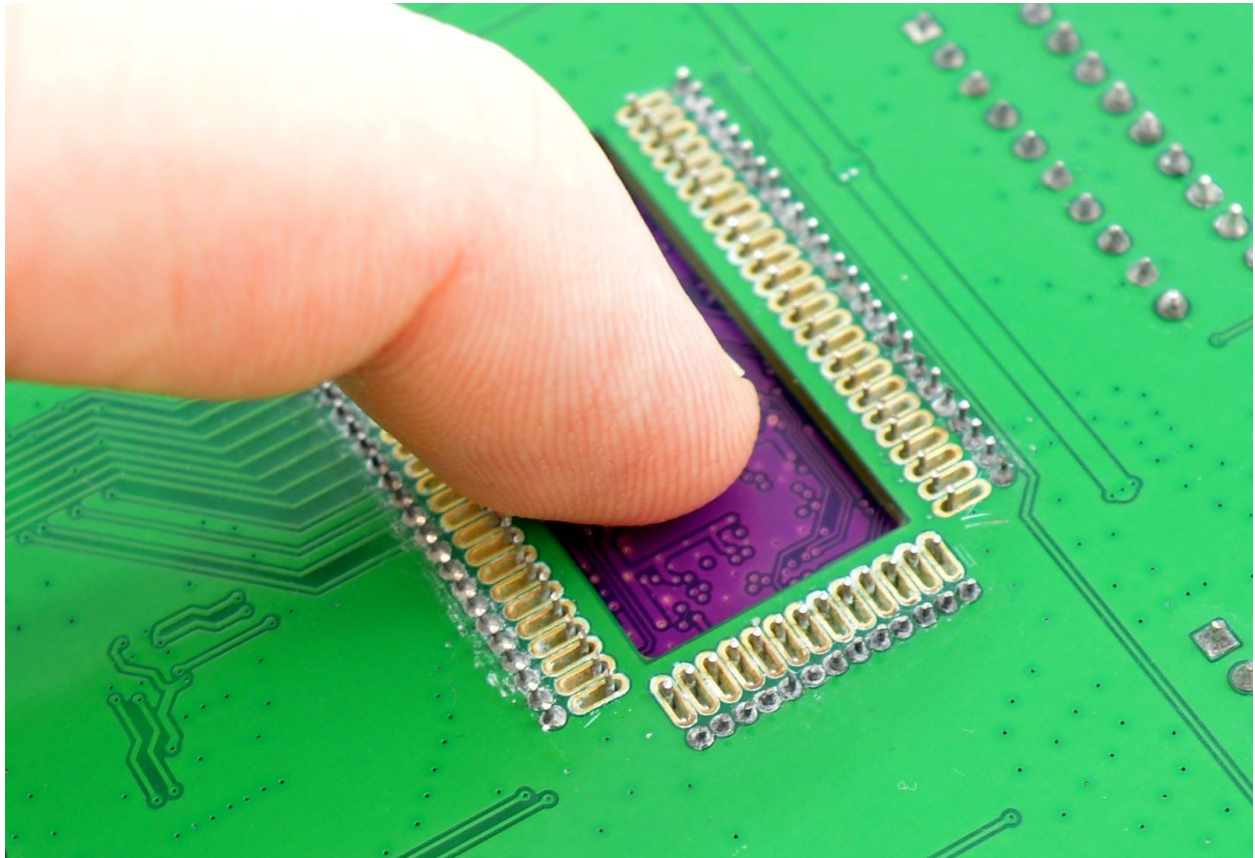
There are two ways to perform this operation:

- *Hardware*:
 - Locate the ‘WPS Reset’ push button on the Dev Kit.
 - Press and hold the reset button for about 10 seconds. It will trigger a factory reset.
 - LED218 will start blinking and after your release the button it will start actual process.
- To learn more and to see how to initiate a factory reset from the command line, refer to our documentation on [factory reset](#)

5.2 Removing Omega2S from the Dev Board

Follow the instructions below to safely remove the Omega2S from the Dev Board socket and avoid damaging your device.

First, power off the Omega and Dev Board. Use the hole in the Omega2S socket on the Dev Board to push the Omega2S from the underside with your finger. Push the Omega until it is free of the socket rail-pins, then grab it from the opposite side.



Refer to our visual guide for more clarity on the removal procedure:

<https://youtu.be/aoYadArVJPw>

6. Additional Resources

6.1 Hardware Setup Video

Refer to our visual guide for more clarity on the safely inserting and removing the Omega2S to and from the Development Board socket: <https://youtu.be/aoYadArVJPw>

6.2 Omega2S Datasheet

To learn more about the Omega2S module, see the [datasheet](#).

6.3 Schematics

6.3.1 Development Board Schematics

Schematics for the Development Board are [available online](#).

6.3.2 Omega2S Reference Design Schematics

An Omega2s reference design and its schematic are [available online](#).



Компания «ЭлектроПласт» предлагает заключение долгосрочных отношений при поставках импортных электронных компонентов на взаимовыгодных условиях!

Наши преимущества:

- Оперативные поставки широкого спектра электронных компонентов отечественного и импортного производства напрямую от производителей и с крупнейших мировых складов;
- Поставка более 17-ти миллионов наименований электронных компонентов;
- Поставка сложных, дефицитных, либо снятых с производства позиций;
- Оперативные сроки поставки под заказ (от 5 рабочих дней);
- Экспресс доставка в любую точку России;
- Техническая поддержка проекта, помощь в подборе аналогов, поставка прототипов;
- Система менеджмента качества сертифицирована по Международному стандарту ISO 9001;
- Лицензия ФСБ на осуществление работ с использованием сведений, составляющих государственную тайну;
- Поставка специализированных компонентов (Xilinx, Altera, Analog Devices, Intersil, Interpoint, Microsemi, Aeroflex, Peregrine, Syfer, Eurofarad, Texas Instrument, Miteq, Cobham, E2V, MA-COM, Hittite, Mini-Circuits, General Dynamics и др.);

Помимо этого, одним из направлений компании «ЭлектроПласт» является направление «Источники питания». Мы предлагаем Вам помощь Конструкторского отдела:

- Подбор оптимального решения, техническое обоснование при выборе компонента;
- Подбор аналогов;
- Консультации по применению компонента;
- Поставка образцов и прототипов;
- Техническая поддержка проекта;
- Защита от снятия компонента с производства.



Как с нами связаться

Телефон: 8 (812) 309 58 32 (многоканальный)

Факс: 8 (812) 320-02-42

Электронная почта: org@eplast1.ru

Адрес: 198099, г. Санкт-Петербург, ул. Калинина, дом 2, корпус 4, литера А.