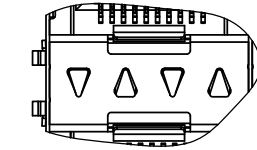
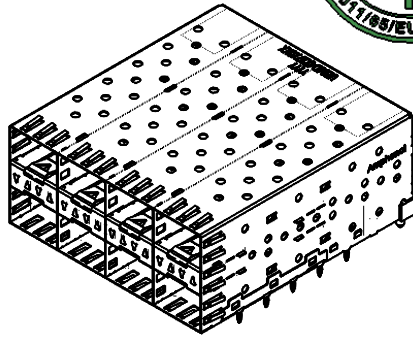
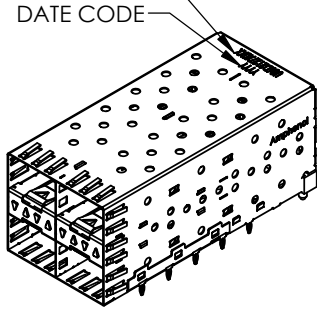




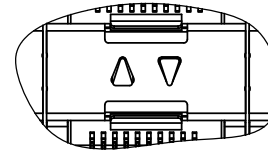
| REVISIONS | | | | |
|-----------|-----|-------------|-----------|----------|
| REV. | ECN | DESCRIPTION | DATE | APPROVED |
| A | | PROPOSAL | MAR.27.14 | J.SI |
| | | | | |
| | | | | |

PART NUMBER
(LAST DIGIT INDICATING
PACKAGING TYPE, NOT
PRINTED ON THE PART)

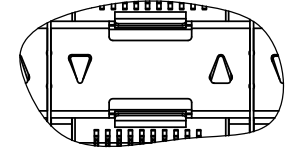
DATE CODE



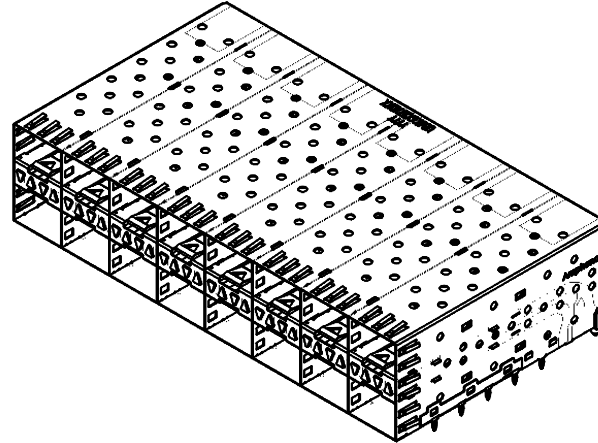
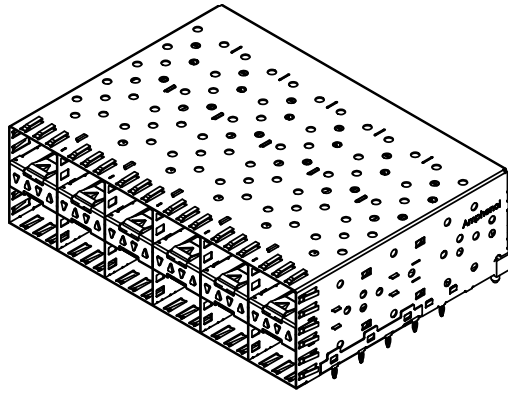
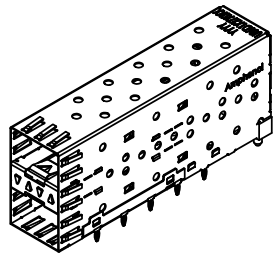
UE86-DX127-10XX1
(4 LIGHT PIPES PER 2X1)



UE86-DX127-20XX1
(2 INNER LIGHT PIPES PER 2X1)



UE86-DX127-30XX1
(2 INNER LIGHT PIPES PER 2X1)



MATERIAL: (RoHS COMPLIANT)

CAGE - PRESS FIT:
COPPER ALLOY

PLATING:

NICKEL 2.54 µm MIN.

CONNECTOR - PRESS FIT:

PLASTIC HOUSING:

LCP, FLAMMABILITY RATING UL94-V0.

CONTACTS:

PHOSPHOR BRONZE

PLATING OPTION:

SEE AMPHENOL PART NUMBER
CONFIGURATION FOR OPTIONS.

LIGHT PIPE:

CLEAR POLYCARBONATE, FLAMMABILITY
RATING UL94-V0.

PACKAGING:

TRAY PACKAGING.

TEMPERATURE RANGE:
-40°C TO +85°

AMPHENOL PART NUMBER CONFIGURATION

UE86 - D X 1 2 7 - X 0 X X 1

NUMBER OF PORTS

- 1 = 2X1
- 2 = 2X2
- 4 = 2X4
- 6 = 2X6
- 8 = 2X8

LIGHT PIPE CONFIGURATION

- 1 = 4 LIGHT PIPES PER 2X1
- 2 = 2 INNER LIGHT PIPES PER 2X1
- 3 = 2 OUTER LIGHT PIPES PER 2X1

PACKAGING

- 1 = TRAY

CAGE PLATING

- 2 = NICKEL
- 3 = MATTE TIN

PRESS FIT CONNECTOR PLATING

- 3 = 0.76 µm MIN. GOLD ON MATING AREA
- 3.81-7.62 µm MATTE TIN ON TERMINATION
- 6 = 0.38 µm MIN. GOLD ON MATING AREA
- 3.81-7.62 µm MATTE TIN ON TERMINATION

DO NOT SCALE DRAWING

THIS DOCUMENT CONTAINS PROPRIETARY INFORMATION AND SUCH INFORMATION MAY NOT BE DISCLOSED TO OTHERS FOR ANY PURPOSE OR USED FOR MANUFACTURING PURPOSES WITHOUT PERMISSION FROM AMPHENOL CANADA CORP.

UNLESS OTHERWISE SPECIFIED
DIMENSIONS ARE IN MILLIMETERS
TOLERANCES ARE:

| | |
|-------------|--------|
| DECIMALS | ANGLES |
| X.X ± 0.25 | ± 1° |
| X.XX ± 0.15 | |

MATERIAL AND FINISH

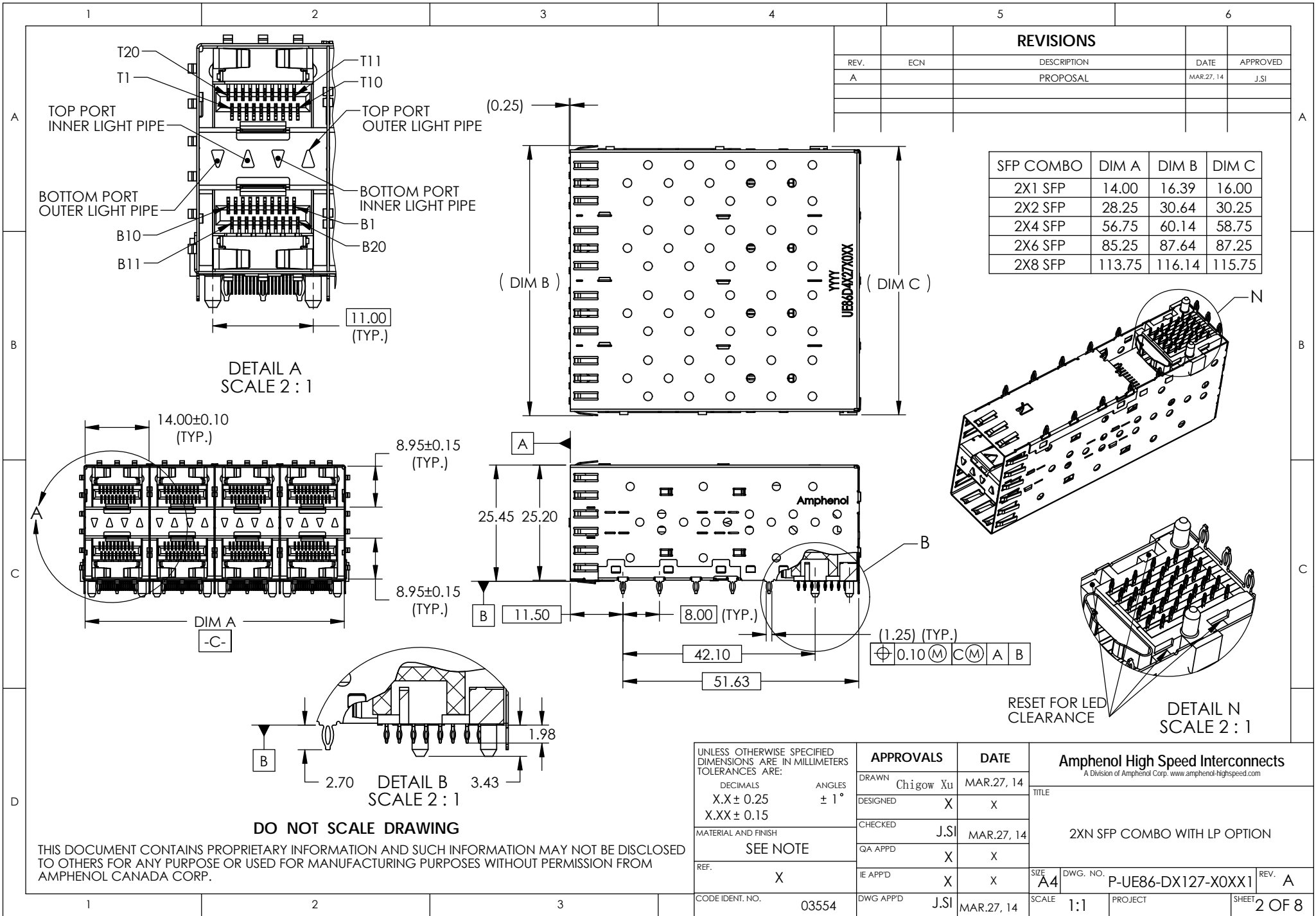
SEE NOTE

REF. X

CODE IDENT. NO. 03554

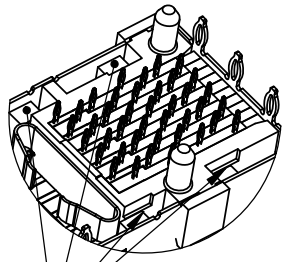
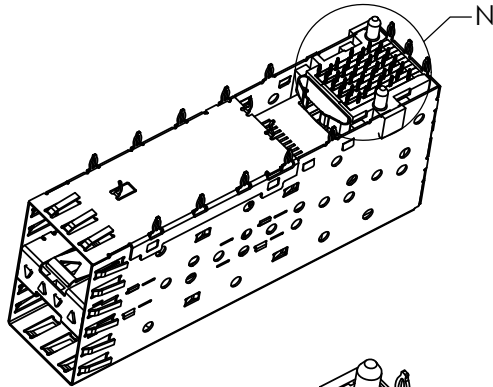
| APPROVALS | DATE |
|-----------------|-----------|
| DRAWN Chigov Xu | MAR.27.14 |
| DESIGNED X | X |
| CHECKED J.SI | MAR.27.14 |
| QA APP'D X | X |
| IE APP'D X | X |
| DWG APP'D J.SI | MAR.27.14 |

| | | | | |
|--|--|-------|--------------------|--------|
| Amphenol High Speed Interconnects <small>A Division of Amphenol Corp. www.amphenol-highspeed.com</small> | | SIZE | DWG. NO. | REV. |
| | | A4 | P-UE86-DX127-X0XX1 | A |
| TITLE | | SCALE | PROJECT | SHEET |
| 2XN SFP COMBO WITH LP OPTION | | 2:3 | | 1 OF 8 |



| REVISIONS | | | | |
|-----------|-----|-------------|-----------|----------|
| REV. | ECN | DESCRIPTION | DATE | APPROVED |
| A | | PROPOSAL | MAR.27.14 | J.SI |
| | | | | |
| | | | | |

| SFP COMBO | DIM A | DIM B | DIM C |
|-----------|--------|--------|--------|
| 2X1 SFP | 14.00 | 16.39 | 16.00 |
| 2X2 SFP | 28.25 | 30.64 | 30.25 |
| 2X4 SFP | 56.75 | 60.14 | 58.75 |
| 2X6 SFP | 85.25 | 87.64 | 87.25 |
| 2X8 SFP | 113.75 | 116.14 | 115.75 |

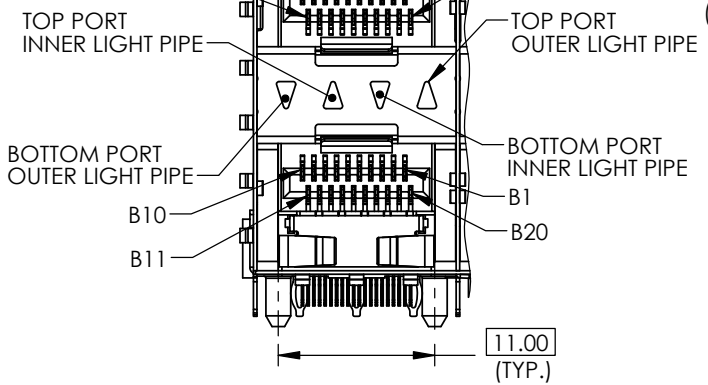


RESET FOR LED CLEARANCE

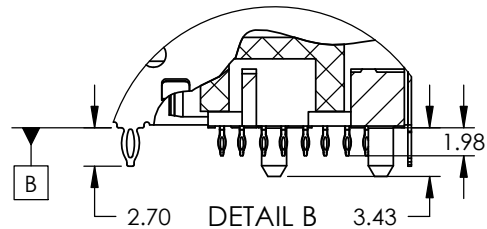
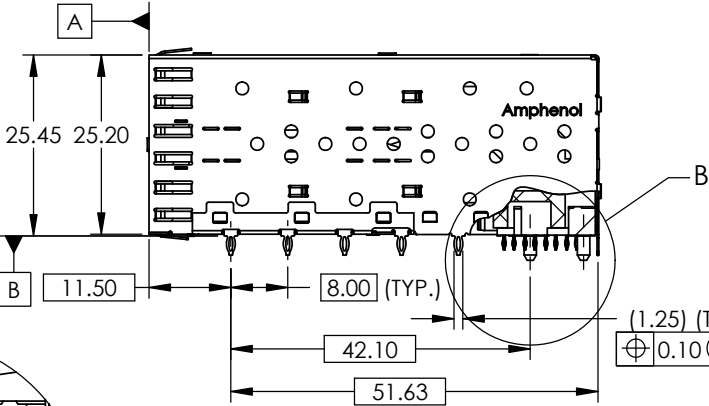
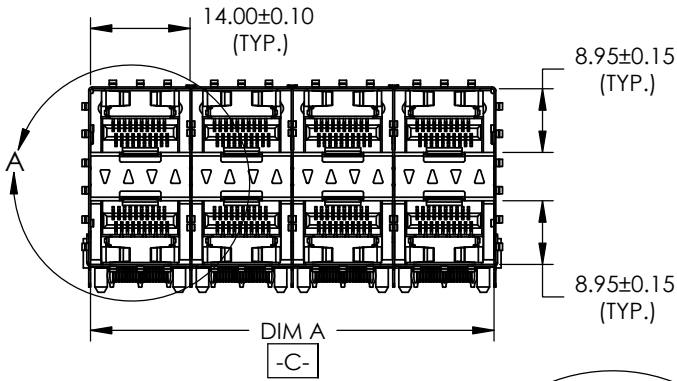
DETAIL N
SCALE 2 : 1

| | | | |
|---|-----------|-----------|----------------|
| UNLESS OTHERWISE SPECIFIED DIMENSIONS ARE IN MILLIMETERS TOLERANCES ARE: DECIMALS ANGLES X.X ± 0.25 ± 1° X.XX ± 0.15 | APPROVALS | | DATE |
| | DRAWN | Chigov Xu | MAR.27.14 |
| | DESIGNED | X | X |
| | CHECKED | J.SI | MAR.27.14 |
| MATERIAL AND FINISH | SEE NOTE | | QA APPD |
| REF. | X | IE APPD | X X |
| CODE IDENT. NO. | 03554 | DWG APPD | J.SI MAR.27.14 |

| | | |
|--|--------------------------------|-----------------|
| Amphenol High Speed Interconnects A Division of Amphenol Corp. www.amphenol-highspeed.com | | |
| TITLE | | |
| 2XN SFP COMBO WITH LP OPTION | | |
| SIZE A4 | DWG. NO. P-UE86-DX127-XOXX1 | REV. A |
| SCALE 1:1 | PROJECT | SHEET 2 OF 8 |



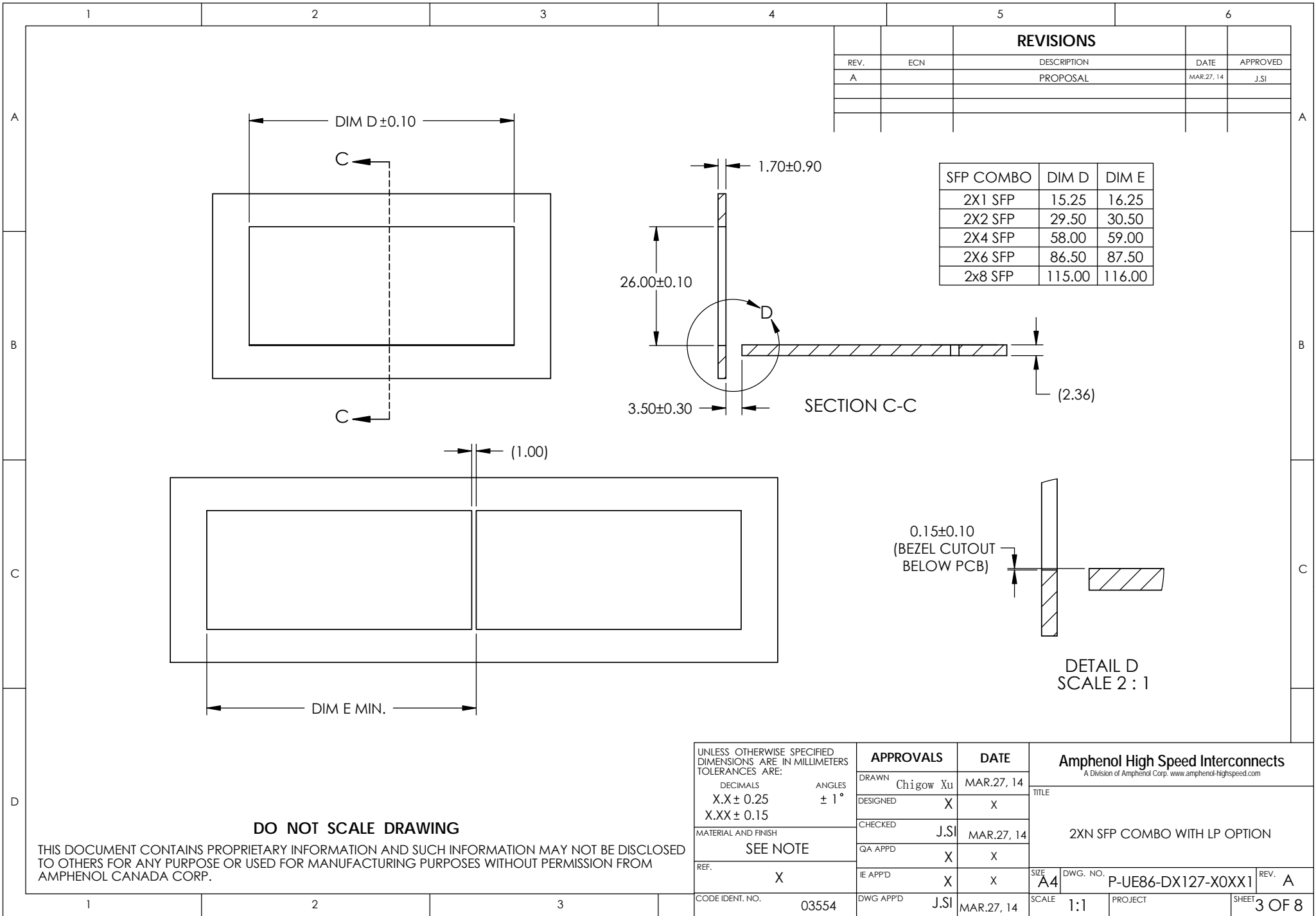
DETAIL A
SCALE 2 : 1



DETAIL B
SCALE 2 : 1

DO NOT SCALE DRAWING

THIS DOCUMENT CONTAINS PROPRIETARY INFORMATION AND SUCH INFORMATION MAY NOT BE DISCLOSED TO OTHERS FOR ANY PURPOSE OR USED FOR MANUFACTURING PURPOSES WITHOUT PERMISSION FROM AMPHENOL CANADA CORP.



| REVISIONS | | | | |
|-----------|-----|-------------|-----------|----------|
| REV. | ECN | DESCRIPTION | DATE | APPROVED |
| A | | PROPOSAL | MAR.27.14 | J.SI |
| | | | | |
| | | | | |

| SFP COMBO | DIM D | DIM E |
|-----------|--------|--------|
| 2X1 SFP | 15.25 | 16.25 |
| 2X2 SFP | 29.50 | 30.50 |
| 2X4 SFP | 58.00 | 59.00 |
| 2X6 SFP | 86.50 | 87.50 |
| 2x8 SFP | 115.00 | 116.00 |

| UNLESS OTHERWISE SPECIFIED DIMENSIONS ARE IN MILLIMETERS TOLERANCES ARE: | | APPROVALS | DATE |
|--|--------|-----------------|------------|
| DECIMALS | ANGLES | DRAWN Chigow Xu | MAR.27, 14 |
| X.X ± 0.25 | ± 1° | DESIGNED X | X |
| X.XX ± 0.15 | | CHECKED J.SI | MAR.27, 14 |
| MATERIAL AND FINISH | | QA APP'D X | X |
| SEE NOTE | | IE APP'D X | X |
| REF. X | | DWG APP'D J.SI | MAR.27, 14 |
| CODE IDENT. NO. 03554 | | | |

| | | |
|--|-----------------------------|--------------|
| Amphenol High Speed Interconnects <small>A Division of Amphenol Corp. www.amphenol-highspeed.com</small> | | |
| TITLE | | |
| 2XN SFP COMBO WITH LP OPTION | | |
| SIZE A4 | DWG. NO. P-UE86-DX127-XOXX1 | REV. A |
| SCALE 1:1 | PROJECT | SHEET 3 OF 8 |

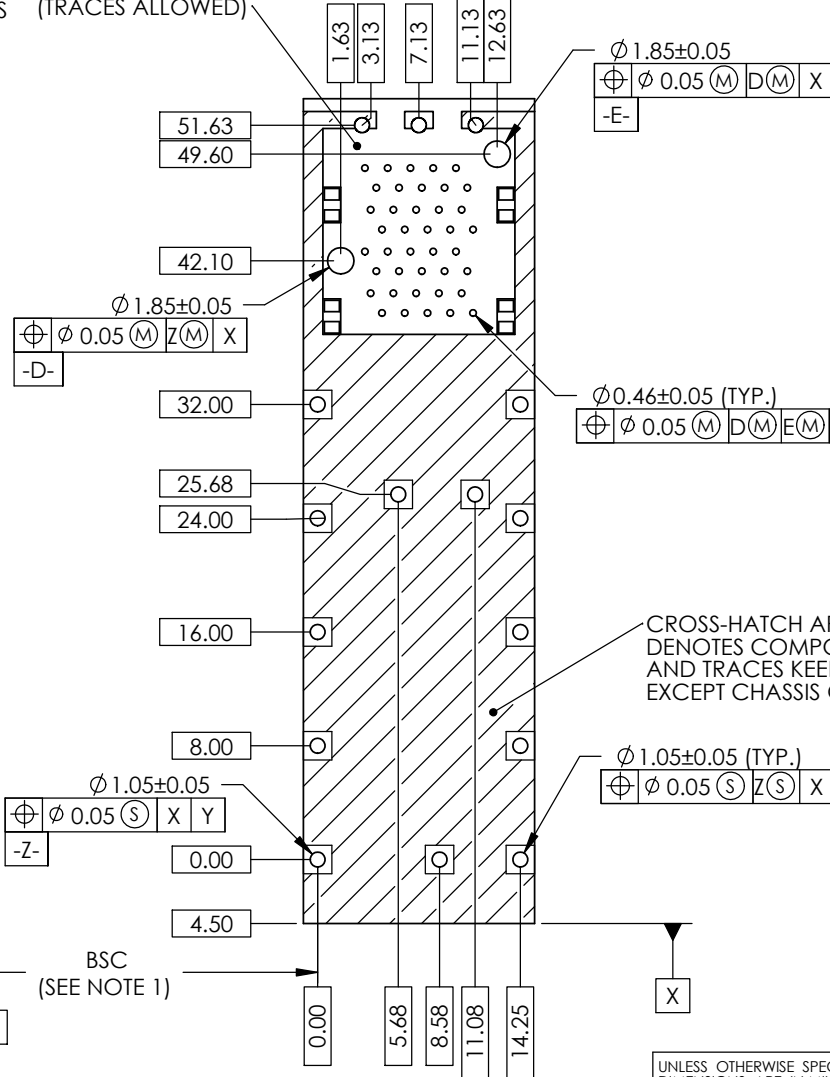
DO NOT SCALE DRAWING

THIS DOCUMENT CONTAINS PROPRIETARY INFORMATION AND SUCH INFORMATION MAY NOT BE DISCLOSED TO OTHERS FOR ANY PURPOSE OR USED FOR MANUFACTURING PURPOSES WITHOUT PERMISSION FROM AMPHENOL CANADA CORP.

NOTES:

1. DATUM AND BASIC DIMENSIONS ESTABLISHED BY CUSTOMER.
2. 1.05 mm DIAMETER HOLES ARE CHASSIS GROUND (16 HOLES).

THIS AREA DENOTES COMPONENTS KEEP OUT (TRACES ALLOWED)



CROSS-HATCH AREA DENOTES COMPONENTS AND TRACES KEEP OUT EXCEPT CHASSIS GROUND

REVISIONS

| REV. | ECN | DESCRIPTION | DATE | APPROVED |
|------|-----|-------------|-----------|----------|
| A | | PROPOSAL | MAR.27.14 | J.SI |

2X1 PCB LAYOUT

DO NOT SCALE DRAWING

THIS DOCUMENT CONTAINS PROPRIETARY INFORMATION AND SUCH INFORMATION MAY NOT BE DISCLOSED TO OTHERS FOR ANY PURPOSE OR USED FOR MANUFACTURING PURPOSES WITHOUT PERMISSION FROM AMPHENOL CANADA CORP.

| | | | | | | | |
|--|----------|------------------|-----------|-------------|------------------------------|---|--------|
| UNLESS OTHERWISE SPECIFIED DIMENSIONS ARE IN MILLIMETERS TOLERANCES ARE: | | APPROVALS | | DATE | | Amphenol High Speed Interconnects A Division of Amphenol Corp. www.amphenol-highspeed.com | |
| DECIMALS | ANGLES | DRAWN | Chigow Xu | MAR.27, 14 | TITLE | | |
| X.X ± 0.25 | ± 1° | DESIGNED | X | X | 2X1 SFP COMBO WITH LP OPTION | | |
| X.XX ± 0.15 | | CHECKED | J.SI | MAR.27, 14 | | | |
| MATERIAL AND FINISH | SEE NOTE | QA APP'D | X | X | | | |
| REF. | X | IE APP'D | X | X | SIZE | DWG. NO. | REV. |
| CODE IDENT. NO. | 03554 | DWG APP'D | J.SI | MAR.27, 14 | A4 | P-UE86-DX127-X0XX1 | A |
| | | | | | SCALE | PROJECT | SHEET |
| | | | | | 1:1 | | 4 OF 8 |

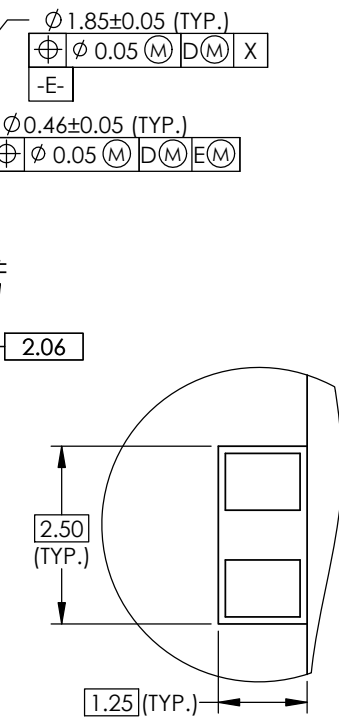
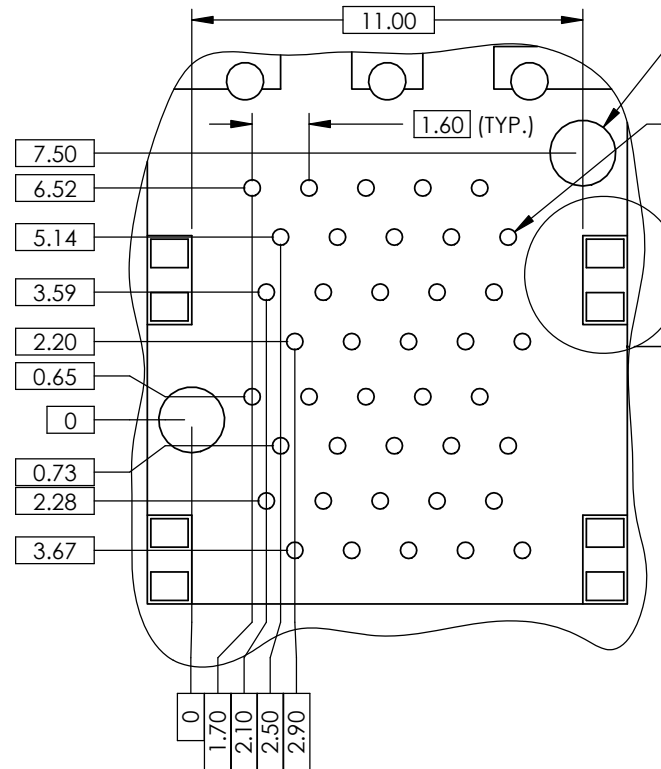
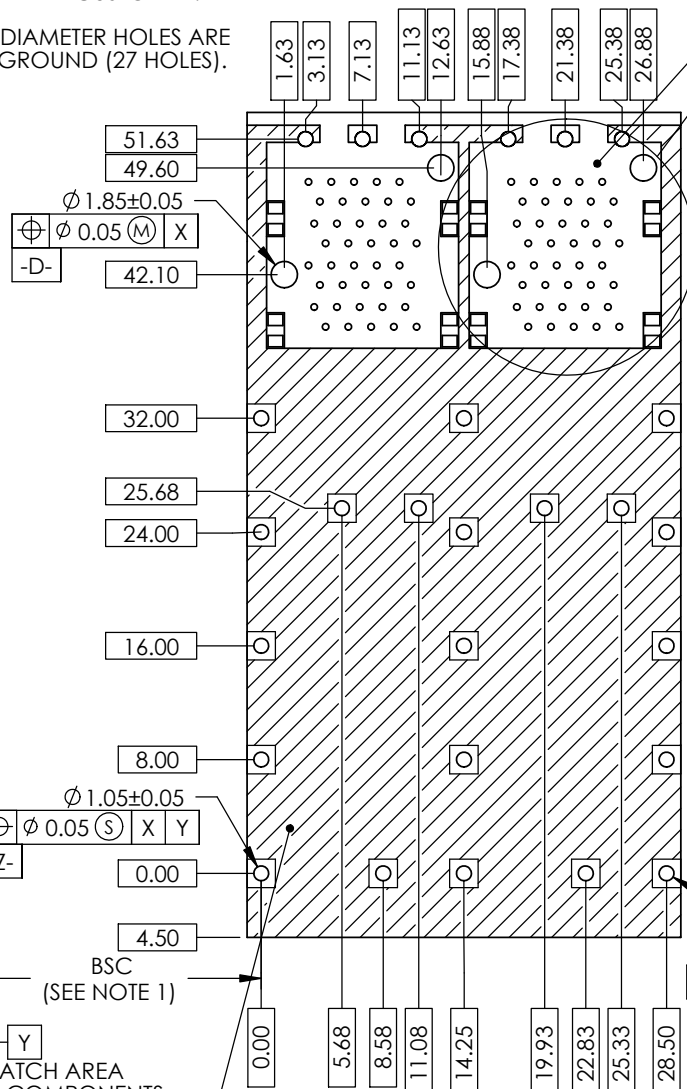
NOTES:

- DATUM AND BASIC DIMENSIONS ESTABLISHED BY CUSTOMER.
- 1.05 mm DIAMETER HOLES ARE CHASSIS GROUND (27 HOLES).

REVISIONS

| REV. | ECN | DESCRIPTION | DATE | APPROVED |
|------|-----|-------------|-----------|----------|
| A | | PROPOSAL | MAR.27.14 | J.SI |

THIS AREA DENOTES COMPONENTS KEEP OUT (TRACES ALLOWED)



DETAIL E
SCALE 5 : 1

DETAIL F
SCALE 10 : 1

DO NOT SCALE DRAWING 2X2 PCB LAYOUT

CROSS-HATCH AREA DENOTES COMPONENTS AND TRACES KEEP OUT EXCEPT CHASSIS GROUND

THIS DOCUMENT CONTAINS PROPRIETARY INFORMATION AND SUCH INFORMATION MAY NOT BE DISCLOSED TO OTHERS FOR ANY PURPOSE OR USED FOR MANUFACTURING PURPOSES WITHOUT PERMISSION FROM AMPHENOL CANADA CORP.

UNLESS OTHERWISE SPECIFIED DIMENSIONS ARE IN MILLIMETERS TOLERANCES ARE:

DECIMALS X.X ± 0.25 ANGLES ± 1°
X.XX ± 0.15

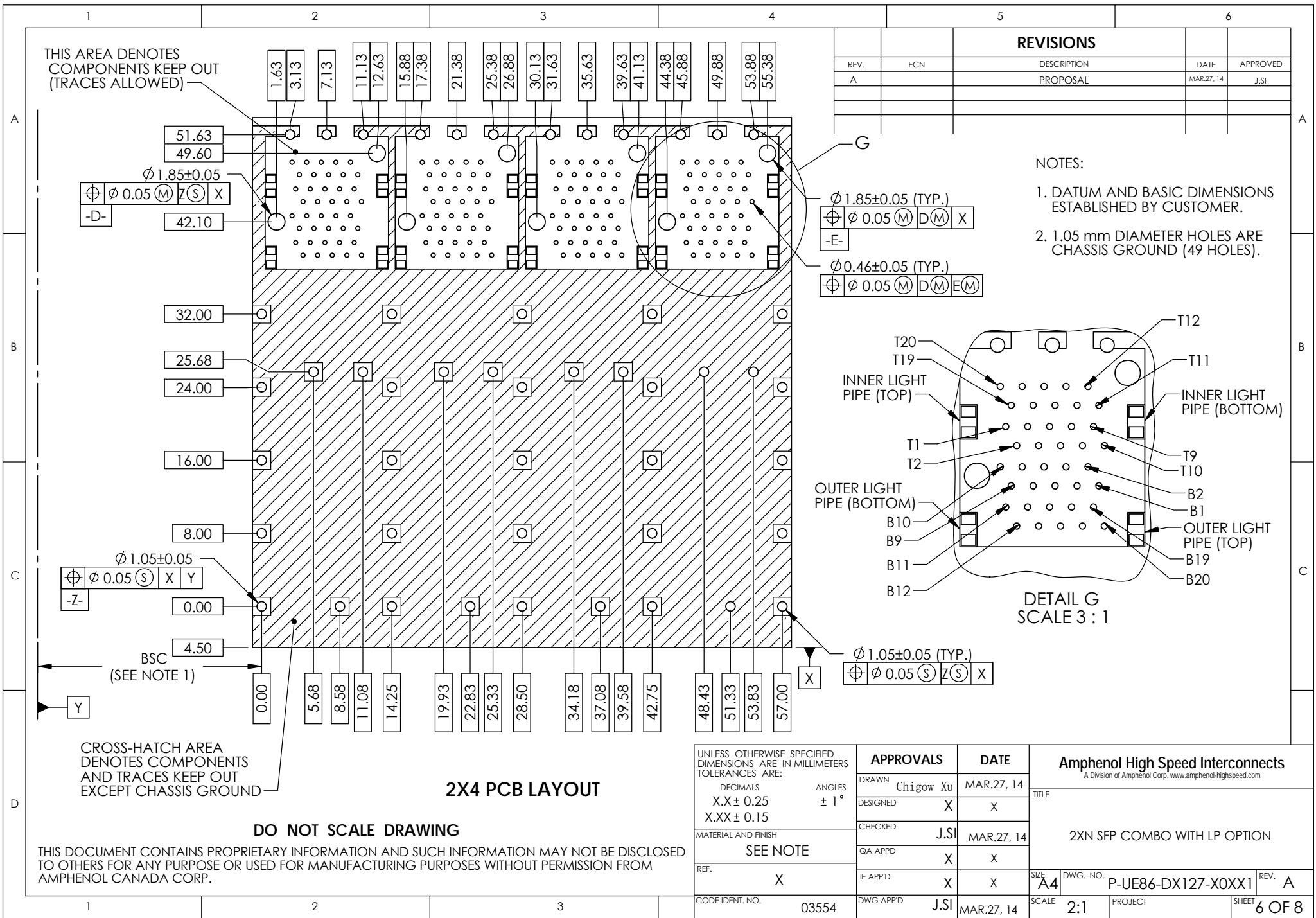
MATERIAL AND FINISH SEE NOTE

REF. X

CODE IDENT. NO. 03554

| APPROVALS | DATE |
|-----------------|------------|
| DRAWN Chigow Xu | MAR.27, 14 |
| DESIGNED X | X |
| CHECKED J.SI | MAR.27, 14 |
| QA APPD X | X |
| IE APPD X | X |
| DWG APPD J.SI | MAR.27, 14 |

| | |
|--|-----------------------------|
| Amphenol High Speed Interconnects <small>A Division of Amphenol Corp. www.amphenol-highspeed.com</small> | |
| TITLE | |
| 2X2N SFP COMBO WITH LP OPTION | |
| SIZE A4 | DWG. NO. P-UE86-DX127-XOXX1 |
| SCALE 2:1 | PROJECT |
| | SHEET 5 OF 8 |



THIS AREA DENOTES COMPONENTS KEEP OUT (TRACES ALLOWED)

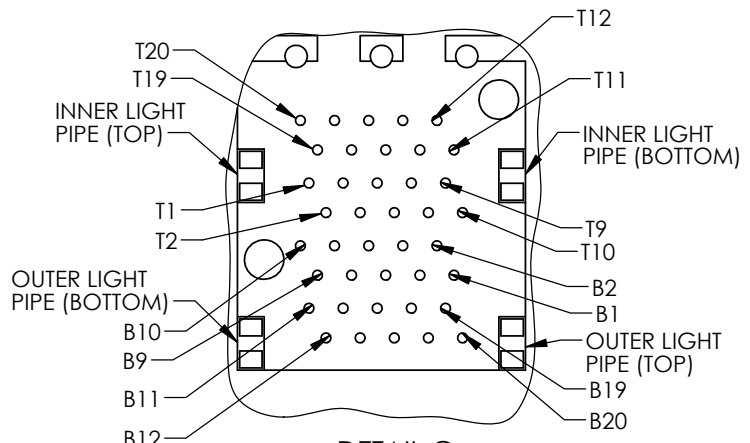
REVISIONS

| REV. | ECN | DESCRIPTION | DATE | APPROVED |
|------|-----|-------------|-----------|----------|
| A | | PROPOSAL | MAR.27.14 | J.SI |

- NOTES:
1. DATUM AND BASIC DIMENSIONS ESTABLISHED BY CUSTOMER.
 2. 1.05 mm DIAMETER HOLES ARE CHASSIS GROUND (49 HOLES).

$\varnothing 1.85 \pm 0.05$ (TYP.)
 $\varnothing 0.05$ (M) (D) (M) (X)
 -E-

$\varnothing 0.46 \pm 0.05$ (TYP.)
 $\varnothing 0.05$ (M) (D) (M) (E) (M)



DETAIL G
SCALE 3:1

2X4 PCB LAYOUT

DO NOT SCALE DRAWING

THIS DOCUMENT CONTAINS PROPRIETARY INFORMATION AND SUCH INFORMATION MAY NOT BE DISCLOSED TO OTHERS FOR ANY PURPOSE OR USED FOR MANUFACTURING PURPOSES WITHOUT PERMISSION FROM AMPHENOL CANADA CORP.

| | | | | | | | | |
|--|----------|------------------|-----------|-------------|--|--|--------------------|--------|
| UNLESS OTHERWISE SPECIFIED DIMENSIONS ARE IN MILLIMETERS TOLERANCES ARE: | | APPROVALS | | DATE | | Amphenol High Speed Interconnects <small>A Division of Amphenol Corp. www.amphenol-highspeed.com</small> | | |
| DECIMALS | ANGLES | DRAWN | Chigow Xu | MAR.27, 14 | TITLE 2XN SFP COMBO WITH LP OPTION | | | |
| X.X ± 0.25 | ± 1° | DESIGNED | X | X | | | | |
| X.XX ± 0.15 | | CHECKED | J.SI | MAR.27, 14 | | | | |
| MATERIAL AND FINISH | SEE NOTE | QA APPD | X | X | | | | |
| REF. | X | IE APPD | X | X | SIZE A4 | DWG. NO. | P-UE86-DX127-XOXX1 | |
| CODE IDENT. NO. | 03554 | DWG APPD | J.SI | MAR.27, 14 | SCALE | 2:1 | PROJECT | |
| | | | | | | | SHEET | 6 OF 8 |

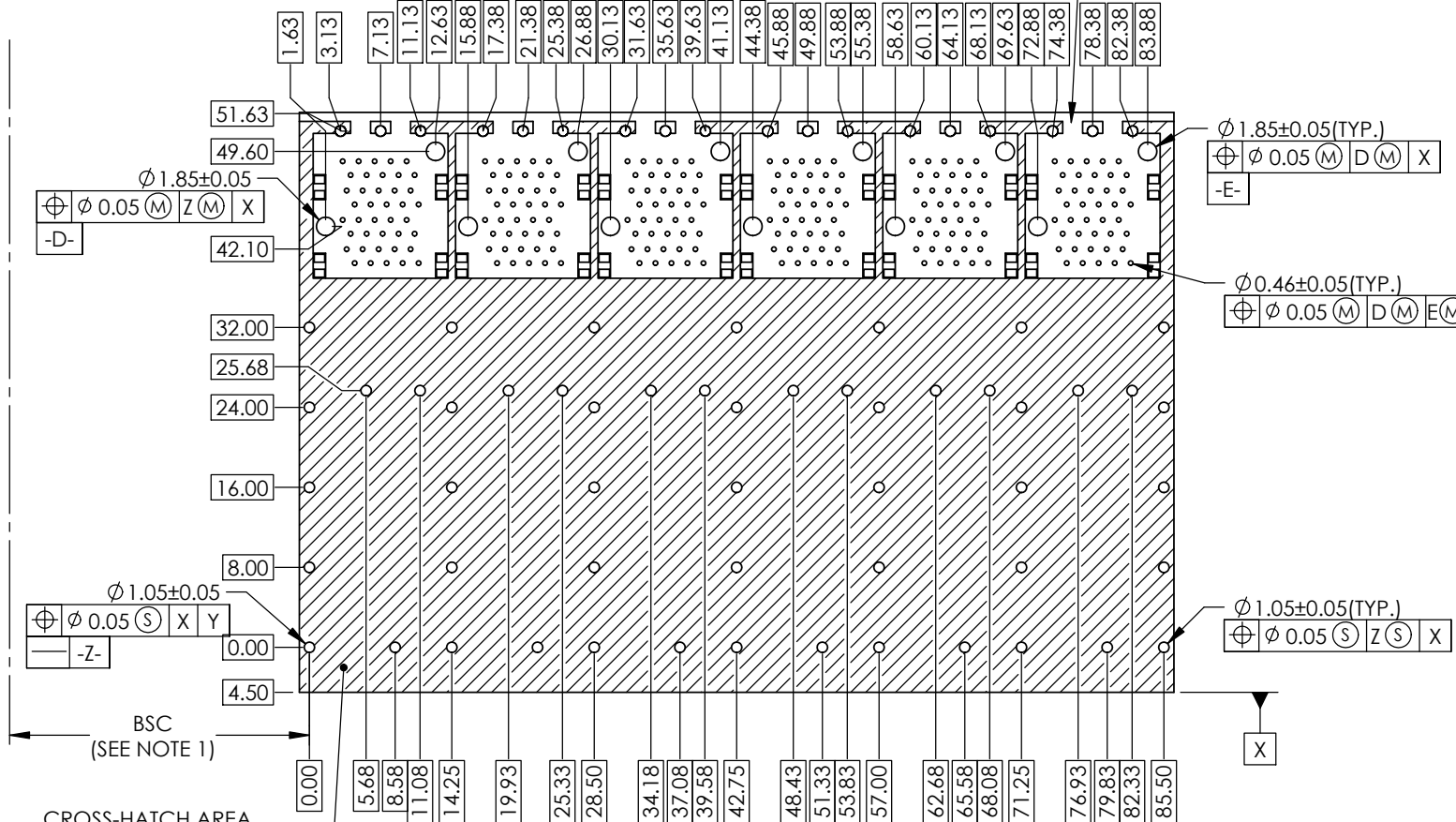
NOTES:

1. DATUM AND BASIC DIMENSIONS ESTABLISHED BY CUSTOMER.
2. 1.05 mm DIAMETER HOLES ARE CHASSIS GROUND (71 HOLES).

THIS AREA DENOTES COMPONENTS KEEP OUT (TRACES ALLOWED)

REVISIONS

| REV. | ECN | DESCRIPTION | DATE | APPROVED |
|------|-----|-------------|-----------|----------|
| A | | PROPOSAL | MAR.27.14 | J.SI |



CROSS-HATCH AREA DENOTES COMPONENTS AND TRACES KEEP OUT EXCEPT CHASSIS GROUND

2X6 PCB LAYOUT

DO NOT SCALE DRAWING

THIS DOCUMENT CONTAINS PROPRIETARY INFORMATION AND SUCH INFORMATION MAY NOT BE DISCLOSED TO OTHERS FOR ANY PURPOSE OR USED FOR MANUFACTURING PURPOSES WITHOUT PERMISSION FROM AMPHENOL CANADA CORP.

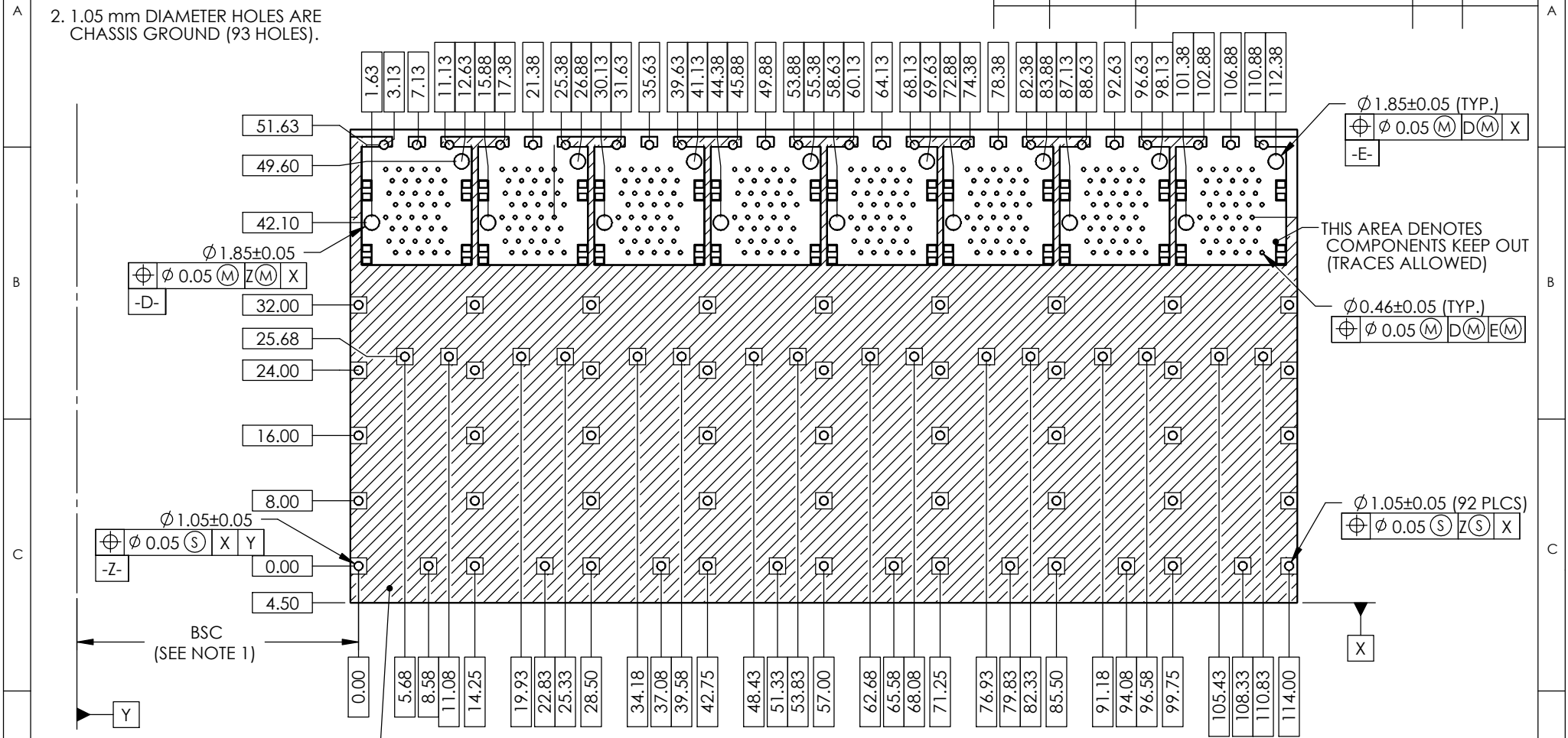
| | | | | | |
|--|--------|-----------|-----------|-----------|--|
| UNLESS OTHERWISE SPECIFIED DIMENSIONS ARE IN MILLIMETERS TOLERANCES ARE: | | APPROVALS | | DATE | Amphenol High Speed Interconnects A Division of Amphenol Corp. www.amphenol-highspeed.com |
| DECIMALS | ANGLES | DRAWN | Chigow Xu | MAR.27.14 | |
| X.X ± 0.25 | ± 1° | DESIGNED | X | X | TITLE |
| X.XX ± 0.15 | | CHECKED | J.SI | MAR.27.14 | 2XN SFP COMBO WITH LP OPTION |
| MATERIAL AND FINISH | | QA APPD | X | X | |
| SEE NOTE | | IE APPD | X | X | SIZE A4 |
| REF. X | | DWG APPD | J.SI | MAR.27.14 | DWG. NO. P-UE86-DX127-XOXX1 |
| CODE IDENT. NO. 03554 | | | | | SCALE 1:2 |
| | | | | | PROJECT |
| | | | | | SHEET 7 OF 8 |

NOTES:

- DATUM AND BASIC DIMENSIONS ESTABLISHED BY CUSTOMER.
- 1.05 mm DIAMETER HOLES ARE CHASSIS GROUND (93 HOLES).

REVISIONS

| REV. | ECN | DESCRIPTION | DATE | APPROVED |
|------|-----|-------------|-----------|----------|
| A | | PROPOSAL | MAR.27.14 | J.SI |



CROSS-HATCH AREA DENOTES COMPONENTS AND TRACES KEEP OUT EXCEPT CHASSIS GROUND

2X8 PCB LAYOUT

DO NOT SCALE DRAWING

THIS DOCUMENT CONTAINS PROPRIETARY INFORMATION AND SUCH INFORMATION MAY NOT BE DISCLOSED TO OTHERS FOR ANY PURPOSE OR USED FOR MANUFACTURING PURPOSES WITHOUT PERMISSION FROM AMPHENOL CANADA CORP.

| | | | | | | | |
|--|--------|-----------|-----------|-----------|------------------------------|--|------|
| UNLESS OTHERWISE SPECIFIED DIMENSIONS ARE IN MILLIMETERS TOLERANCES ARE: | | APPROVALS | | DATE | | Amphenol High Speed Interconnects A Division of Amphenol Corp. www.amphenol-highspeed.com | |
| DECIMALS | ANGLES | DRAWN | Chigow Xu | MAR.27.14 | TITLE | | |
| X.X ± 0.25 | ± 1° | DESIGNED | X | X | 2XN SFP COMBO WITH LP OPTION | | |
| X.XX ± 0.15 | | CHECKED | J.SI | MAR.27.14 | | | |
| MATERIAL AND FINISH | | QA APPD | X | X | SIZE | DWG. NO. | REV. |
| SEE NOTE | | IE APPD | X | X | A4 | P-UE86-DX127-XOXX1 | A |
| REF. | X | SCALE | 1:1 | PROJECT | SHEET 8 OF 8 | | |
| CODE IDENT. NO. | 03554 | DWG APPD | J.SI | MAR.27.14 | | | |



Компания «ЭлектроПласт» предлагает заключение долгосрочных отношений при поставках импортных электронных компонентов на взаимовыгодных условиях!

Наши преимущества:

- Оперативные поставки широкого спектра электронных компонентов отечественного и импортного производства напрямую от производителей и с крупнейших мировых складов;
- Поставка более 17-ти миллионов наименований электронных компонентов;
- Поставка сложных, дефицитных, либо снятых с производства позиций;
- Оперативные сроки поставки под заказ (от 5 рабочих дней);
- Экспресс доставка в любую точку России;
- Техническая поддержка проекта, помощь в подборе аналогов, поставка прототипов;
- Система менеджмента качества сертифицирована по Международному стандарту ISO 9001;
- Лицензия ФСБ на осуществление работ с использованием сведений, составляющих государственную тайну;
- Поставка специализированных компонентов (Xilinx, Altera, Analog Devices, Intersil, Interpoint, Microsemi, Aeroflex, Peregrine, Syfer, Eurofarad, Texas Instrument, Miteq, Cobham, E2V, MA-COM, Hittite, Mini-Circuits, General Dynamics и др.);

Помимо этого, одним из направлений компании «ЭлектроПласт» является направление «Источники питания». Мы предлагаем Вам помощь Конструкторского отдела:

- Подбор оптимального решения, техническое обоснование при выборе компонента;
- Подбор аналогов;
- Консультации по применению компонента;
- Поставка образцов и прототипов;
- Техническая поддержка проекта;
- Защита от снятия компонента с производства.



Как с нами связаться

Телефон: 8 (812) 309 58 32 (многоканальный)

Факс: 8 (812) 320-02-42

Электронная почта: org@eplast1.ru

Адрес: 198099, г. Санкт-Петербург, ул. Калинина, дом 2, корпус 4, литера А.