

MY-TFT070V2

User Manual

Version V1.1

2015-03-16

Version History

Version Number	Description	Time
V1.0	Initial Version	2014.11
V1.1	Update the pic of this product, and do some correcting	2015.03.16

Table of Contents

Table of Contents	3
Chapter 1 Product Overview	4
1.1 Product Description	4
1.2 Product Features.....	4
1.3 General Specifications	5
1.4 Product Overview.....	5
Chapter 2 Hardware Resource	7
2.1 Board Interface	7
2.2 Pin Assignment.....	7
2.3 Electrical Characteristics.....	8
2.4 Timing	9
Chapter 3 Mechanical Dimensions	12
Appendix.....	14
Appendix 1 Warranty & Technical Support Services	15

Chapter 1 Product Overview

1.1 Product Description

MY-TFT070V2, 7-inch LCD module is a color active matrix thin-film transistor (TFT) liquid crystal display (LCD), launched by MYiR. It includes TFT LCD display (with resistive touch screen), connectors, control and drive circuit, PCB drive board. Drive board reserved 1.27mm pitch IDC connector (25pinX2) and 0.5mm pitch FPC connector. It is designed for development board of MYiR ARM family.

1.2 Product Features

MY-TFT070V2 is compatible with three types of touch input. There are “Resistive Touch Input”, “Internal Capacitive Touch Input” and “External Capacitive Touch Input”. Accord to the need to select a type, but there is only one can to be enable on the board.

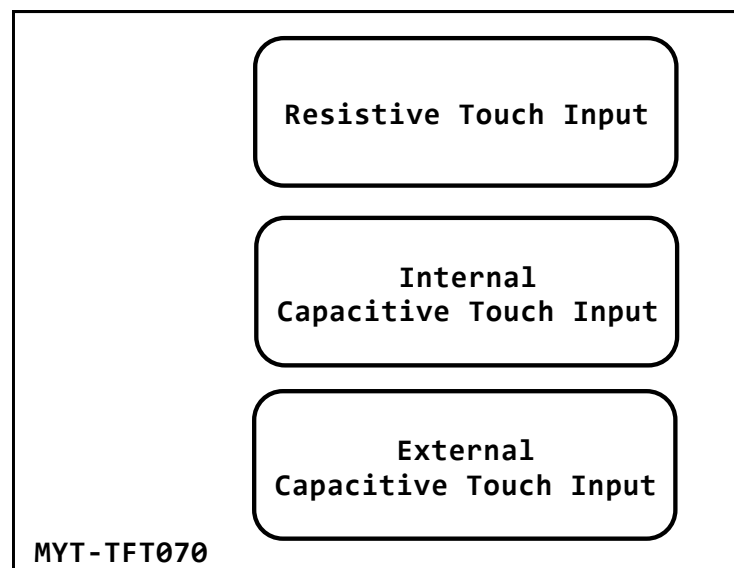


Figure 1-1

There is a store IC on back of MY-TFT070V2, the LCD information would be stored in this IC and could be automatic detected by the OS that run on MYiR board, the corresponding drivers can also be loaded according to this information.

1.3 General Specifications

NO	Item	Specification	Remark
1	LCD size	7 Inch (16:9)	Diagonal
2	Resolution	800 (H) x3 (RGB) x480 (v) mm	
3	Display area	95 (H) x 53.86 (V) mm	Note 1
4	Outline Dimension	165 (w) x104 (H) x5.5 (T) mm	Note 1
5	Module size	177 x 106 mm	Note 1
6	Display mode	Normally White, Transmissive	
7	Dot pitch	0.0642 (W) x 0.1790 (H) mm	
8	Surface treatment	Anti-Glare	
9	Operation Temperature	-20°C – 70°C	
10	Storage Temperature	-30°C – 80°C	
11	Interface	50pin FPC	0.5mm pitch
		50pin IDC connector (25pinX2)	1.27mm pitch
12	Weight	150g	Typ
13	Backlight power consumption	1.674W	Typ
14	Panel power consumption	0.226W	Typ

Note1: Please refer to Mechanical Drawing.

1.4 Product Overview



Figure 1-2 Product Front View

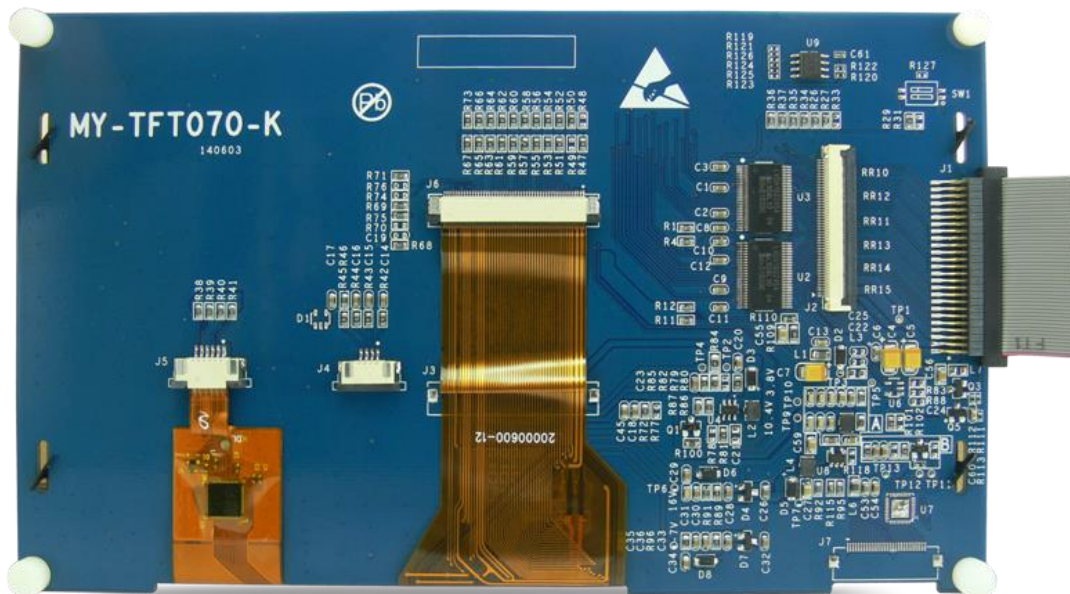


Figure 1-3 Product Back View

Chapter 2 Hardware Resource

2.1 Board Interface

Board Interface is shown in figure 2-1:

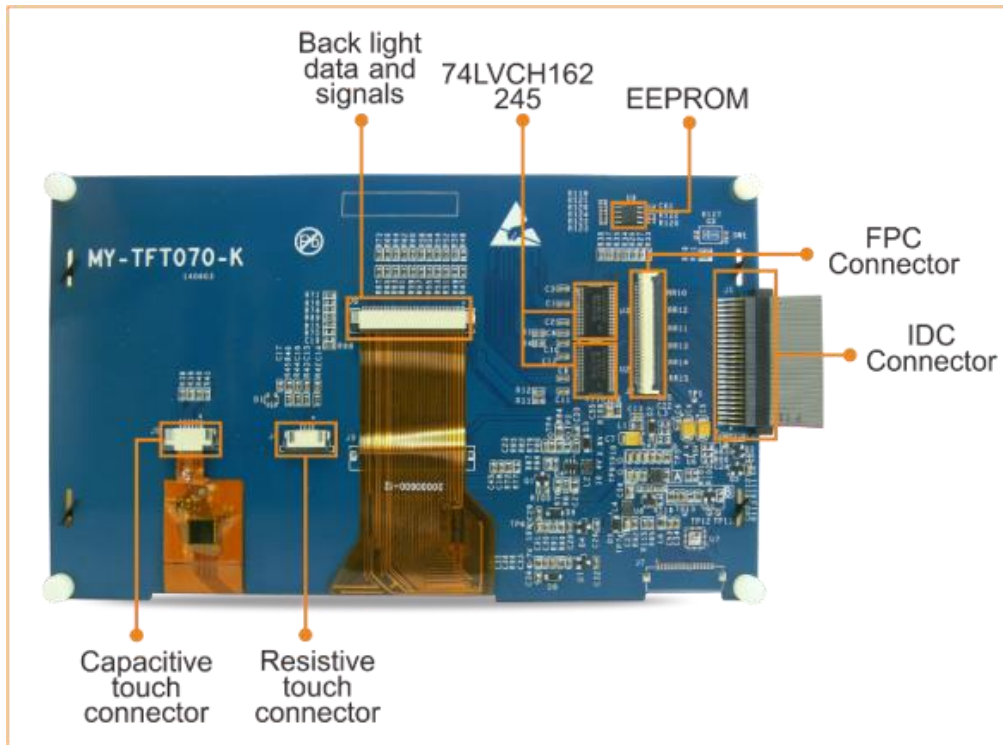


Figure 2-1 Board Interface

As shown above, drive board reserved 1.27mm pitch 50pin IDC connector (J1) and 0.5mm pitch 50pin FPC connector (J2),and default connect IDC cable. J4 is resistive touch signal connections, J5 and J7 are capacitive touch control signals respectively, the default selection is J5 capacitive touch mode. J3 and J6 are LCD backlighting, data and control signals , and default connect J6.

2.2 Pin Assignment

Function	Symbol	Pin No.	Pin No.	Symbol	Function
5V Power supply	+5V	1	2	+5V	5V Power supply
3.3V Power supply	+3V3	3	4	+3V3	3.3V Power supply
Power ground	GND	5	6	GND	Power ground
LCD Blue data (B0)	BLUE0	7	8	BLUE1	LCD Blue data((B1)

LCD Blue data (B2)	BLUE2	9	10	BLUE3	LCD Blue data((B3)
LCD Blue data (B4)	BLUE4	11	12	BLUE5	LCD Blue data((B5)
LCD Blue data (B6)	BLUE6	13	14	BLUE7	LCD Blue data((B7)
LCD Green data (G0)	GREEN0	15	16	GREEN1	LCD Green data (G1)
LCD Green data (G2)	GREEN2	17	18	GREEN3	LCD Green data (G3)
LCD Green data (G4)	GREEN4	19	20	GREEN5	LCD Green data (G5)
LCD Green data (G6)	GREEN6	21	22	GREEN7	LCD Green data (G7)
LCD Red data (R0)	RED0	23	24	RED1	LCD Red data (R1)
LCD Red data (R2)	RED2	25	26	RED3	LCD Red data (R3)
LCD Red data (R4)	RED4	27	28	RED5	LCD Red data (R5)
LCD Red data (R6)	RED6	29	30	RED7	LCD Red data (R7)
Power ground	GND	31	32	BL_CN	Backlight control (PWM)
LCD Power enable	PWR_EN_R1	33	34	PWR_EN_R2	LCD Power enable
Interrupt signal	TP_INTn	35	36	TP_RESET	Global reset pin.
I2C1 Clock	I2C1_SCL	37	38	I2C1_SDA	I2C1 Data
Power ground	GND	39	40	VDEN	LCD Data enable
LCD Vertical sync signal	VSYNC	41	42	HSYNC	LCD Horizontal sync signal
LCD Pixel clock	VCLK	43	44	GND	Power ground
Right electrode - differential analog	TP_XR	45	46	TP_XL	Left electrode - differential analog
Top electrode - differential analog	TP_YD	47	48	TP_YU	Bottom electrode - differential analog
DNP	DNP	49	50	GND	Power ground

2.3 Electrical Characteristics

Typical voltage Consumption:

Item	Symbol	Min.	Typ.	Max.
Power voltage	VDD	3.0V	3.3V	3.6V
	AVDD	10.2V	10.4 V	10.6V
	VGH	15.3 V	16.0 V	16.7 V
	VGL	-7.7 V	-7.0 V	-6.3 V
Input signal voltage	VCOM	2.6V	3.6 V	4.6 V
Input logic high voltage	VIH	0.7 VDD	-	VDD
Input logic low voltage	VIL	0	-	0.3 VDD

Current Consumption:

Item	Symbol	Min.	Typ.	Max.	Remark
Current for Driver	IGH	-	0.2 mA	1.0mA	VGH =16.0V
	IGL	-	0.2 mA	1.0mA	VGL = -7.0V
	IVDD	-	4.0 mA	10mA	VDD =3.3V
	IAVDD	-	20 mA	50mA	AVDD =10.4V

2.4 Timing

Horizontal Timing:

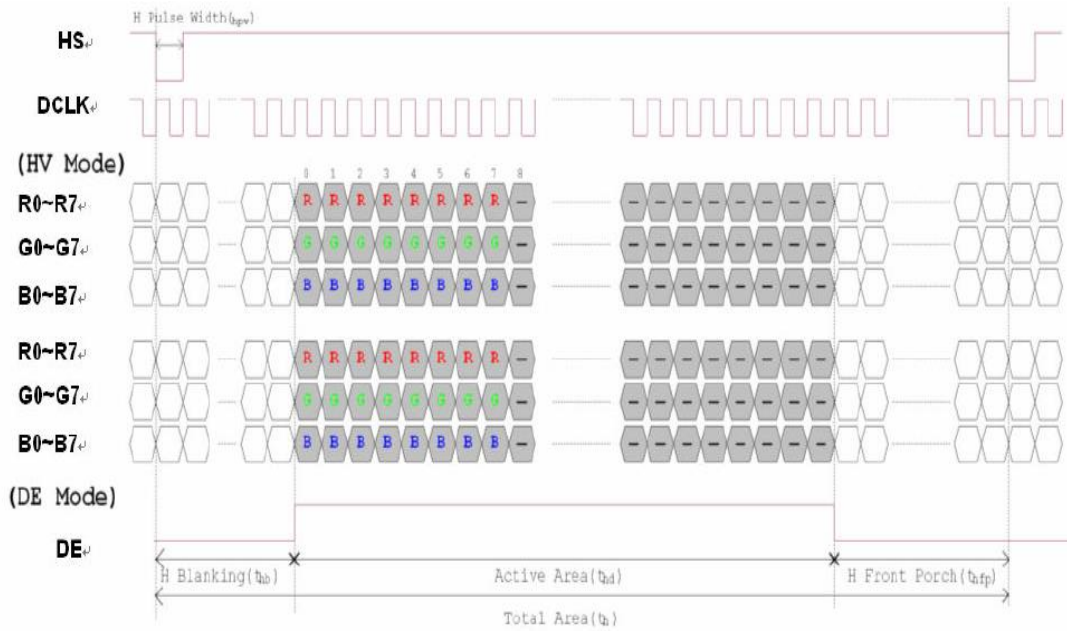
Item	Symbol	Min.	Typ.	Max.
Horizontal Display Area	thd	-	800DCLK	-
DCLK Frequency	fclk	26.4MHz	33.3MHz	46.8MHz
One Horizontal Line	th	862DCLK	1056DCLK	1200DCLK
HS pulse width	Thpw	1	-	40DCLK
HS Blanking	thb	46DCLK	46DCLK	46DCLK
HS Front Porch	thfp	16DCLK	210DCLK	354DCLK

Vertical Timing:

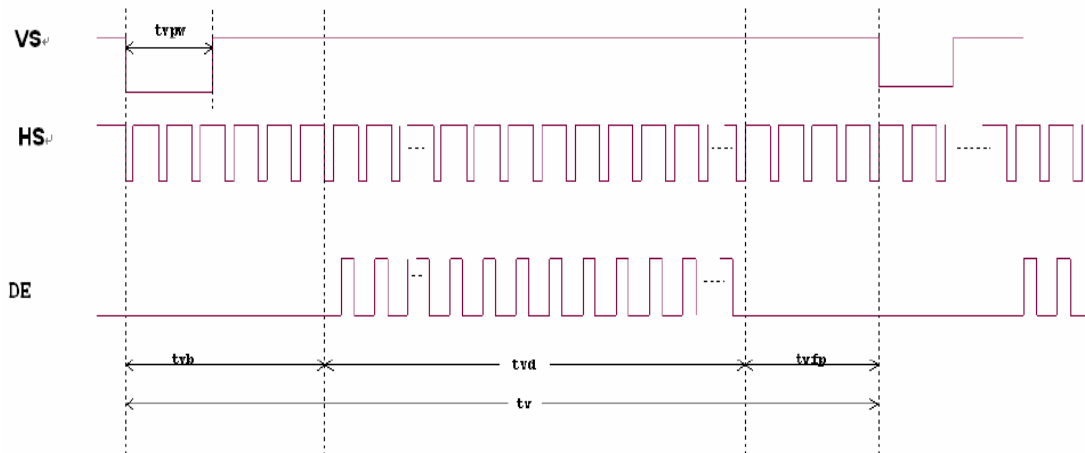
Item	Symbol	Min.	Typ.	Max.
Vertical Display Area	tvd	-	480TH	-
VS period time	tv	510 TH	525 TH	650 TH
VS pulse width	tvpw	1 TH	-	20 TH
VS Blanking	tvb	23 TH	23 TH	23 TH
VS Front Porch	tvfp	7 TH	22 TH	147 TH

Data Input Format

Horizontal input timing diagram:



Vertical input timing diagram:



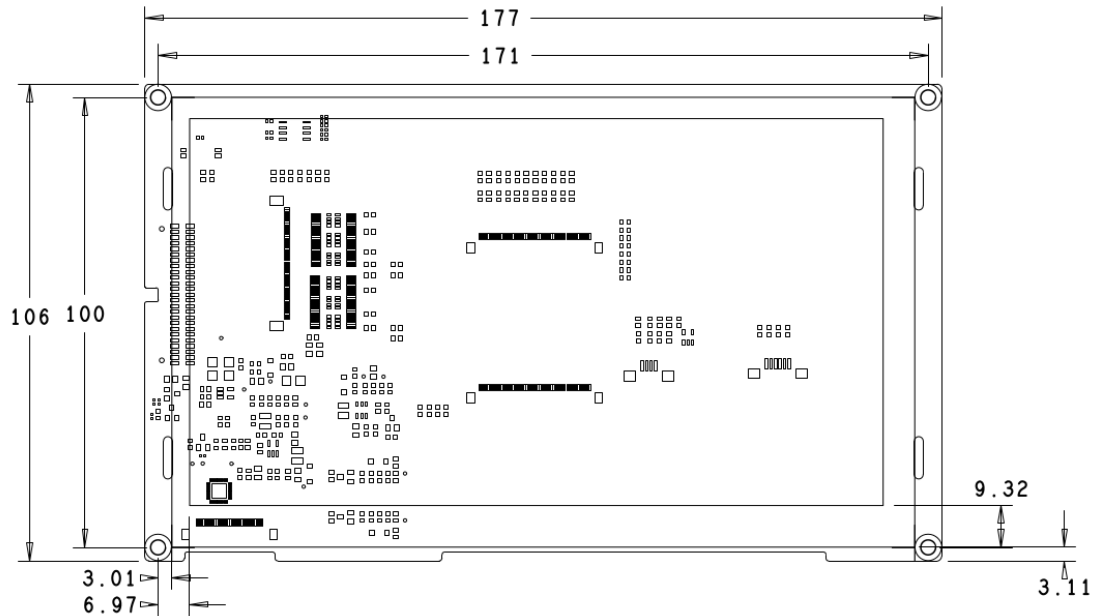
Optical Specifications:

Item	Symbol	Condition	Min.	Typ.	Max.
Viewing angle (CR≥ 10)	θL	Φ=180°(9 'clock)	60	70	-
	θR	Φ=0°(3 o'clock)	60	70	-
	θT	Φ=90°(12 'clock)	40	50	-
	θB	Φ=270°(6 'clock)	60	70	-
Response time	TON	Normal θ=Φ=0°	-	10ms	20 ms
	TOFF		-	15 ms	30ms
Contrast ratio	CR		400	500	-

Item	Symbol	Condition	Min.	Typ.	Max.
Color chromaticity	WX		0.26	0.31	0.36
	WY		0.28	0.33	0.38
Luminance	L		200cd/m ²	250cd/m ²	-
Luminance uniformity	YU		70%	75%	=

Chapter 3 Mechanical Dimensions

Mechanical Dimensions:



UNIT : MM

Figure3-1 MY-TFT070V2 Mechanical Dimensions

Electrical Dimensions:

- LCD size: 7 Inch (16:9)
- Resolution: 800x3 (RGB) x480
- Operation Temperature: -20 – 70 °C
- Storage Temperature: -30 – 80 °C
- Environment Temperature: -50°C ~+100°C
- Power supply:
 - 3.3V/2A
 - 5V/2A
- LCD consumption:
 - Backlight power consumption: 1.674W
 - Panel power consumption: 0.226W
- Interface Type:
 - 50PIN IDC connector, 2.0mm pitch

- 50PIN FPC, 0.5mm pitch
- Mechanical Dimensions:
 - Outline Dimension: [165*1040] mm
 - Module size: [177*106] mm

Appendix

The MY-TFT070V2 7-inch LCD module (resolution of 800×480) has two models: MY-TFT070RV2 (7-inch LCD with Resistive touch screen) and MY-TFT070CV2 (7-inch LCD Module with Capacitive touch screen).

General Precautions:

1. The LCD panel is plate glass. Do not subject the panel to mechanical shock or to excessive force on its surface.
2. The polarizer attached to the display is easily damaged. Please handle it carefully to avoid scratch or other damages.
3. To avoid contamination on the display surface, do not touch the module surface with bare hands.
4. Keep a space so that the LCD panels do not touch other components.
5. Put cover board such as acrylic board on the surface of LCD panel to protect panel from damages.
6. Transparent electrodes may be disconnected if you use the LCD panel under environmental conditions where the condensation of dew occurs.
7. Do not leave module in direct sunlight to avoid malfunction of the ICs.

Appendix 1 Warranty & Technical Support Services

MYIR Tech Limited is a global provider of ARM hardware and software tools, design solutions for embedded applications. We support our customers in a wide range of services to accelerate your time to market.

MYIR is an ARM Connected Community Member and work closely with ARM and many semiconductor vendors. We sell products ranging from board level products such as development boards, single board computers and CPU modules to help with your evaluation, prototype, and system integration or creating your own applications. Our products are used widely in industrial control, medical devices, consumer electronic, telecommunication systems, Human Machine Interface (HMI) and more other embedded applications. MYIR has an experienced team and provides custom design services based on ARM processors to help customers make your idea a reality.

The contents below introduce to customers the warranty and technical support services provided by MYIR as well as the matters needing attention in using MYIR's products.

Service Guarantee

MYIR regards the product quality as the life of an enterprise. We strictly check and control the core board design, the procurement of components, production control, product testing, packaging, shipping and other aspects and strive to provide products with best quality to customers. We believe that only quality products and excellent services can ensure the long-term cooperation and mutual benefit.

Price

MYIR insists on providing customers with the most valuable products. We do not pursue excess profits which we think only for short-time cooperation. Instead, we hope to establish long-term cooperation and win-win business with customers. So we will offer reasonable prices in the hope of making the business greater with the customers together hand in hand.

Delivery Time

MYIR will always keep a certain stock for its regular products. If your order quantity is less than the amount of inventory, the delivery time would be within three days; if your order quantity is greater than the number of inventory, the delivery time would be always four to six weeks. If for any urgent delivery, we can negotiate with customer and try to supply the goods in advance.

Technical Support

MYIR has a professional technical support team. Customer can contact us by email (support@myirtech.com), we will try to reply you within 48 hours. For mass production and customized products, we will specify person to follow the case and ensure the smooth production.

After-sale Service

MYIR offers one year free technical support and after-sales maintenance service from the purchase date. The service covers:

1. Technical support service
 - a) MYIR offers technical support for the hardware and software materials which have provided to customers;
 - b) To help customers compile and run the source code we offer;
 - c) To help customers solve problems occurred during operations if users follow the user manual documents;
 - d) To judge whether the failure exists;
 - e) To provide free software upgrading service.

However, the following situations are not included in the scope of our free technical support service:

- a) Hardware or software problems occurred during customers' own development;
- b) Problems occurred when customers compile or run the OS which is tailored by themselves;
- c) Problems occurred during customers' own applications development;
- d) Problems occurred during the modification of MYIR's software source code.

2. After-sales maintenance service

The products except LCD, which are not used properly, will take the twelve months free maintenance service since the purchase date. But following situations are not included in the scope of our free maintenance service:

- a) The warranty period is expired;
- b) The customer cannot provide proof-of-purchase or the product has no serial number;
- c) The customer has not followed the instruction of the manual which has caused the damage the product;
- d) Due to the natural disasters (unexpected matters), or natural attrition of the components, or unexpected matters leads the defects of appearance/function;
- e) Due to the power supply, bump, leaking of the roof, pets, moist, impurities into the boards, all those reasons which have caused the damage of the products or defects of appearance;
- f) Due to unauthorized weld or dismantle parts or repair the products which has caused the damage of the products or defects of appearance;
- g) Due to unauthorized installation of the software, system or incorrect configuration or

computer virus which has caused the damage of products.

Warm tips:

- 1) MYIR does not supply maintenance service to LCD. We suggest the customer first check the LCD when receiving the goods. In case the LCD cannot run or no display, customer should contact MYIR within 7 business days from the moment get the goods.
- 2) Please do not use finger nails or hard sharp object to touch the surface of the LCD.
- 3) MYIR suggests user purchasing a piece of special wiper to wipe the LCD after long time use, please avoid clean the surface with fingers or hands to leave fingerprint.
- 4) Do not clean the surface of the screen with chemicals.
- 5) Please read through the product user manual before you using MYIR's products.
- 6) For any maintenance service, customers should communicate with MYIR to confirm the issue first. MYIR's support team will judge the failure to see if the goods need to be returned for repair service, we will issue you RMA number for return maintenance service after confirmation.

3. Maintenance period and charges

- a) MYIR will test the products within three days after receipt of the returned goods and inform customer the testing result. Then we will arrange shipment within one week for the repaired goods to the customer. For any special failure, we will negotiate with customers to confirm the maintenance period.
- b) For products within warranty period and caused by quality problem, MYIR offers free maintenance service; for products within warranty period but out of free maintenance service scope, MYIR provides maintenance service but shall charge some basic material cost; for products out of warranty period, MYIR provides maintenance service but shall charge some basic material cost and handling fee.

4. Shipping cost

During the warranty period, the shipping cost which delivered to MYIR should be responsible by user; MYIR will pay for the return shipping cost to users when the product is repaired. If the warranty period is expired, all the shipping cost will be responsible by users.

5. Products Life Cycle

MYIR will always select mainstream chips for our design, thus to ensure at least ten years continuous supply; if meeting some main chip stopping production, we will inform customers in time and assist customers with products updating and upgrading.

Value-added Services

1. MYIR provides services of driver development base on MYIR's products, like serial port, USB, Ethernet, LCD, etc.
2. MYIR provides the services of OS porting, BSP drivers' development, API software

development, etc.

3. MYIR provides other products supporting services like power adapter, LCD panel, etc.
4. ODM/OEM services.



MYIR Tech Limited

Room 04, 6th Floor, Building No.2,
Fada Road, Yunli Smart Park,
Bantian, Longgang District,
Shenzhen, Guangdong,
China 518129

E-mail: support@myirtech.com

Phone: +86-755-22984836

Fax: +86-755-25532724

Website: <http://www.myirtech.com>



Компания «ЭлектроПласт» предлагает заключение долгосрочных отношений при поставках импортных электронных компонентов на взаимовыгодных условиях!

Наши преимущества:

- Оперативные поставки широкого спектра электронных компонентов отечественного и импортного производства напрямую от производителей и с крупнейших мировых складов;
- Поставка более 17-ти миллионов наименований электронных компонентов;
- Поставка сложных, дефицитных, либо снятых с производства позиций;
- Оперативные сроки поставки под заказ (от 5 рабочих дней);
- Экспресс доставка в любую точку России;
- Техническая поддержка проекта, помощь в подборе аналогов, поставка прототипов;
- Система менеджмента качества сертифицирована по Международному стандарту ISO 9001;
- Лицензия ФСБ на осуществление работ с использованием сведений, составляющих государственную тайну;
- Поставка специализированных компонентов (Xilinx, Altera, Analog Devices, Intersil, Interpoint, Microsemi, Aeroflex, Peregrine, Syfer, Eurofarad, Texas Instrument, Miteq, Cobham, E2V, MA-COM, Hittite, Mini-Circuits, General Dynamics и др.);

Помимо этого, одним из направлений компании «ЭлектроПласт» является направление «Источники питания». Мы предлагаем Вам помощь Конструкторского отдела:

- Подбор оптимального решения, техническое обоснование при выборе компонента;
- Подбор аналогов;
- Консультации по применению компонента;
- Поставка образцов и прототипов;
- Техническая поддержка проекта;
- Защита от снятия компонента с производства.



Как с нами связаться

Телефон: 8 (812) 309 58 32 (многоканальный)

Факс: 8 (812) 320-02-42

Электронная почта: org@eplast1.ru

Адрес: 198099, г. Санкт-Петербург, ул. Калинина, дом 2, корпус 4, литера А.