

TECHNICAL DATA

# RSE300 and RSE600 Infrared Cameras



## Mounted infrared cameras for research, science and engineering

- **MATLAB®** and **LabVIEW®** software compatibility allows users to integrate infrared data, images and videos to support R&D analysis
- 320x240 and 640x480 resolution options
- See the details you need with **optional smart lenses**: 2x and 4x telephoto, wide angle and macro lenses
- Optimize images, generate customizable reports and export images to the format of your choice with **SmartView® desktop software**
- Eliminate potential for mis-diagnosis with automatically focused images throughout your field of view with **MultiSharp™ Focus**

## SUPERIOR IMAGE QUALITY

### SPATIAL RESOLUTION

**RSE300**  
1.85 mRad

**RSE600**  
0.93 mRad

### RESOLUTION

**RSE300**  
320x240

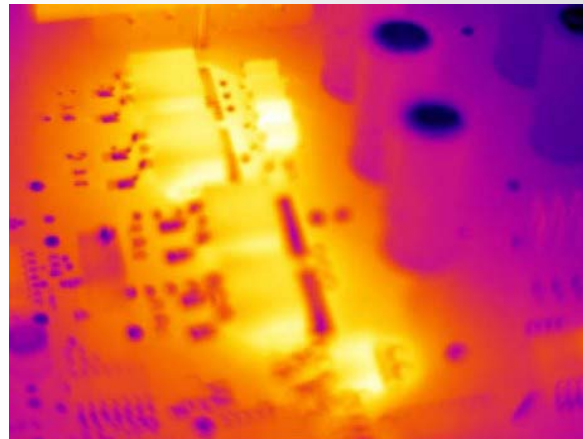
**RSE600**  
640x480

### FIELD OF VIEW

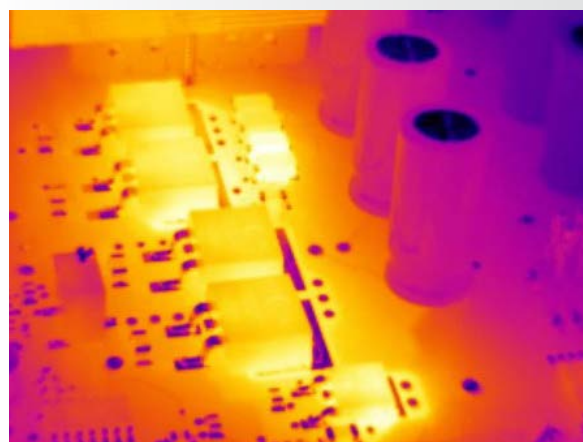
**RSE300**  
34 °H x 25.5 °V

**RSE600**  
34 °H x 25.5 °V

100 % Focused—Every object. Near and far. MultiSharp™ Focus.



Manual focus



MultiSharp Focus, available on the RSE300 and RSE600 Infrared Cameras

## Detailed specifications

	RSE300	RSE600
<b>Key Features</b>		
Detector resolution	320x240 (76,800 pixels)	640x480 (307,200 pixels)**
IFOV with standard lens (spatial resolution)	1.85 mRad	0.93 mRad
Field of view	34 °H x 25.5 °V	34 °H x 25.5 °V
Minimum focus distance	15 cm (approx. 6 in)	
Camera focus options	Focus is adjusted in SmartView® desktop software	
MultiSharp™ Focus	Yes, focused near and far, throughout the field of view	
IR-Fusion® technology	Yes, in SmartView® desktop software. Five modes of image blending (AutoBlend™ mode, Picture-in-Picture (PIP), IR/Visible alarm, Full IR, Full visible light) add the context of the visible details to your infrared image	
Interfaces for image/data transfer	Supported in camera data ports: GigE Vision	
Thermal sensitivity (NETD)	≤ 0.030 °C at 30 °C target temp (30 mK)*	≤ 0.040 °C at 30 °C target temp (40 mK)*
Filter mode (NETD improvement)	Yes	
<b>Level and span</b>		
Smooth auto and manual scaling, in SmartView® desktop software		
Fast auto toggle between manual and auto modes	Yes, in SmartView® desktop software	
Fast auto-rescale in manual mode	Yes, in SmartView® desktop software	
Minimum span (in manual mode)	0.1 °C (0.18 °F), in SmartView® desktop software	
Minimum span (in auto mode)	<1.0 °C (<1.8 °F), in SmartView® desktop software	
Built-in digital camera (visible light)	5 megapixel industrial performance	
Frame rate	60 Hz or 9 Hz versions	
Digital zoom	Variable up to 16x in SmartView® desktop software	
<b>Data storage and image capture</b>		
Memory options	Connect to SmartView® desktop software for storage to device	
Image capture, review, save mechanism	Capture, save and analyze images in SmartView® desktop software	
Image file formats	Non-radiometric (.bmp) or (.jpeg) or fully-radiometric (.is2); no analysis software required for non-radiometric (.bmp, .jpg and .avi) files	
Software	SmartView® desktop software—full analysis and reporting software Compatible with MATLAB® and LabVIEW® software	
Export file formats with SmartView® desktop software	Bitmap (.bmp), GIF, JPEG, PNG, TIFF	
Voice annotation	Yes, in SmartView® desktop software	
IR PhotoNotes™	Yes, in SmartView® desktop software	
Text annotation	Yes, in SmartView® desktop software	
Video recording	Radiometric, in SmartView® desktop software, with exports to standard non-radiometric formats	
File formats video	Non-radiometric (MPEG-encoded .AVI) and fully-radiometric (.IS3), in SmartView® software	
Remote display viewing	Yes, see the live stream of the camera display on your PC, or TV monitor, via Ethernet cable to SmartView® desktop software	
Remote control operation	Yes, through SmartView® desktop software	
<b>Temperature measurement</b>		
Temperature measurement range (not calibrated below -10 °C)	-10 °C to +1200 °C (14 °F to +2192 °F)	
Accuracy	± 2 °C or ± 2 %, whichever is greater	
Autocapture	Yes, in SmartView® desktop software	
Reflected background temperature compensation	Yes, in SmartView® desktop software	
Transmission correction	Yes, in SmartView® desktop software	
Available through IR-Fusion® technology in desktop software		
Color palettes	8: Ironbow, Blue-Red, High Contrast, Amber, Amber Inverted, Hot Metal, Grayscale, Grayscale Inverted	
Ultra Contrast™ palettes	8: Ironbow Ultra, Blue-Red Ultra, High Contrast Ultra, Amber Ultra, Amber Inverted Ultra, Hot Metal Ultra, Grayscale Ultra, Grayscale Inverted Ultra	

\*Best possible

\*\*Option to output 320x240 infrared data through GigE Vision

## Detailed specifications (continued)

	RSE300	RSE600
<b>Key Features</b>		
Color alarms (temperature alarms)	Yes, in SmartView® desktop software—high temperature, low temperature, and isotherms (within range)	
Infrared spectral band	8 µm to 14 µm (long wave)	
Operating temperature	-10 °C to +50 °C (14 °F to 122 °F)	
Storage temperature	-20 °C to +50 °C (-4 °F to 122 °F)	
Relative humidity	10 % to 95 % non-condensing	
Center-point temperature measurement	Yes, in SmartView® desktop software	
Spot temperature	Yes, in SmartView® desktop software—hot and cold spot markers	
User-definable spot markers	Unlimited user-definable spot markers, in SmartView® desktop software	
Center box	Expandable—contractible measurement box with MIN-MAX-AVG temp display, in desktop software	
Electromagnetic compatibility	EN 61326-1:2013 IEC 61326-1:2013; (Industrial)	
US FCC	CFR 47, Part 15 Subpart B Class A	
Vibration	IEC 60068-2-26 (sinusoidal vibration): 3G, 11–200 Hz, 3 axis.	
Shock	IEC 60068-2-27 (mechanical shock): 50G, 6 ms, 3 axis.	
Size (HxWxL)	8.3 cm x 8.3 cm x 16.5 cm (3.3 in x 3.3 in x 6.5 in)	
Weight	1 kg (2.2 lbs)	
Enclosure rating	IEC 60529: IP67 (protected against dust, limited ingress; protection against water spray from all directions)	
Warranty	Two years (standard), extended warranties are available	
Recommended calibration cycle	Two years (assumes normal operation and normal aging)	
Supported languages	Czech, Dutch, English, Finnish, French, German, Hungarian, Italian, Japanese, Korean, Polish, Portuguese, Russian, Simplified Chinese, Spanish, Swedish, Traditional Chinese, and Turkish	

### Ordering information

**FLK-RSE300 60Hz** Thermal Imager; 320x240  
**FLK-RSE300 9Hz** Thermal Imager; 320x240  
**FLK-RSE300 9Hz/CH** Thermal Imager; 320x240;  
 9 Hz, China  
**FLK-RSE300 60Hz/JP** Thermal Imager; 320x240;  
 60 Hz, Japan  
**FLK-RSE600 60Hz** Thermal Imager; 640x480  
**FLK-RSE600 9Hz** Thermal Imager; 640x480  
**FLK-RSE600 9Hz/CH** Thermal Imager; 640x480;  
 9 Hz, China  
**FLK-RSE600 60Hz/JP** Thermal Imager; 640x480;  
 60 Hz, Japan

#### What's included

Infrared camera with standard infrared lens; AC power supply; Ethernet cable; Antenna

Available by free download: SmartView® desktop software and user manual

Software can be downloaded at

[www.fluke.com/smartviewdownload](http://www.fluke.com/smartviewdownload)

#### Optional accessories

**FLK 0.75X WIDE LENS** Infrared Wide Angle Lens  
**FLK 2X LENS** Infrared Telephoto Lens  
 (2X magnification)  
**FLK 4X LENS** Infrared Telephoto Lens  
 (4X magnification)  
**FLK MACRO LENS** Infrared Macro Lens  
**BOOK-ITP** Introduction to Thermography Principles Book  
**FLK-RSE-MB** Mounting bracket  
**FLK-RSE-STAND** RSE Stand

Visit your local Fluke website  
 or contact your local Fluke  
 representative for more information.



**Fluke. Keeping your world up and running.®**

**Fluke Corporation**  
 PO Box 9090, Everett, WA 98206 U.S.A.

**Fluke Europe B.V.**  
 PO Box 1186, 5602 BD  
 Eindhoven, The Netherlands

Modification of this document is not  
 permitted without written permission  
 from Fluke Corporation.

#### For more information call:

In the U.S.A. (800) 443-5853 or  
 Fax (425) 446-5116  
 In Europe/M-East/Africa +31 (0)40 267 5100 or  
 Fax +31 (0)40 267 5222  
 In Canada (800)-36-FLUKE or  
 Fax (905) 890-6866  
 From other countries +1 (425) 446-5500 or  
 Fax +1 (425) 446-5116  
 Web access: <http://www.fluke.com>

©2017, 2018 Fluke Corporation.  
 Specifications subject to change without notice.  
 4/2018 6009950c-en



Компания «ЭлектроПласт» предлагает заключение долгосрочных отношений при поставках импортных электронных компонентов на взаимовыгодных условиях!

Наши преимущества:

- Оперативные поставки широкого спектра электронных компонентов отечественного и импортного производства напрямую от производителей и с крупнейших мировых складов;
- Поставка более 17-ти миллионов наименований электронных компонентов;
- Поставка сложных, дефицитных, либо снятых с производства позиций;
- Оперативные сроки поставки под заказ (от 5 рабочих дней);
- Экспресс доставка в любую точку России;
- Техническая поддержка проекта, помощь в подборе аналогов, поставка прототипов;
- Система менеджмента качества сертифицирована по Международному стандарту ISO 9001;
- Лицензия ФСБ на осуществление работ с использованием сведений, составляющих государственную тайну;
- Поставка специализированных компонентов (Xilinx, Altera, Analog Devices, Intersil, Interpoint, Microsemi, Aeroflex, Peregrine, Syfer, Eurofarad, Texas Instrument, Miteq, Cobham, E2V, MA-COM, Hittite, Mini-Circuits, General Dynamics и др.);

Помимо этого, одним из направлений компании «ЭлектроПласт» является направление «Источники питания». Мы предлагаем Вам помощь Конструкторского отдела:

- Подбор оптимального решения, техническое обоснование при выборе компонента;
- Подбор аналогов;
- Консультации по применению компонента;
- Поставка образцов и прототипов;
- Техническая поддержка проекта;
- Защита от снятия компонента с производства.



#### Как с нами связаться

**Телефон:** 8 (812) 309 58 32 (многоканальный)

**Факс:** 8 (812) 320-02-42

**Электронная почта:** [org@eplast1.ru](mailto:org@eplast1.ru)

**Адрес:** 198099, г. Санкт-Петербург, ул. Калинина, дом 2, корпус 4, литера А.