

Switchcraft®

MMVP Micro Video Patchbays



MMVP48K175T
-1RU / 96 Patch-points
-Fully Normalled
-75 Ohm Terminated

Features

-Based on the proven, reliable, patented technology of our MVJ Series of HD video jacks.

-Screw in, all metal jack design withstands vibration in mobile applications.

-Rated at 3GHz - meets SMPTE 424M specifications for HD patching.

MMVP Micro Video Patchbays

The MMVP Series provides the highest level of density for SMPTE 424M video and AES/EBU digital audio patching... 48 channels (96 patch-points) in a 1RU 19" rack space.

Based on the patented, proven design of our MVJ MidSize video jack, the all metal, screw-in jack provides complete stability and durability in even the most extreme applications, including mobile production. The MMVP jack is rated at 3GHz and meets SMPTE 424M specifications. Industry standard DIN 1.0 / 2.3 rear termination makes installation easy and eliminates the need for proprietary connectors or special tooling.

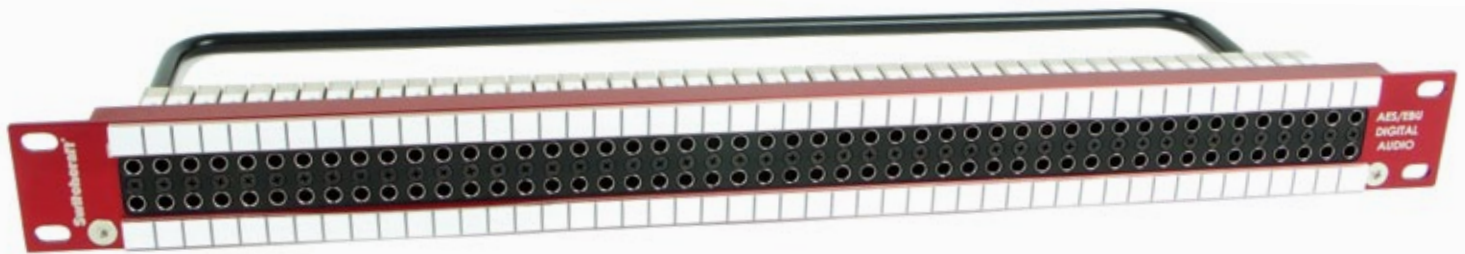
The MMVP Series is available in 1RU, 1.5RU, and 2RU heights for greater flexibility. 1.5RU and 2RU versions are available with two rows of jacks (4x48 density). All versions are available normalled, non-normalled, 75 Ohm terminated or non-terminated.

Made in Chicago, USA 



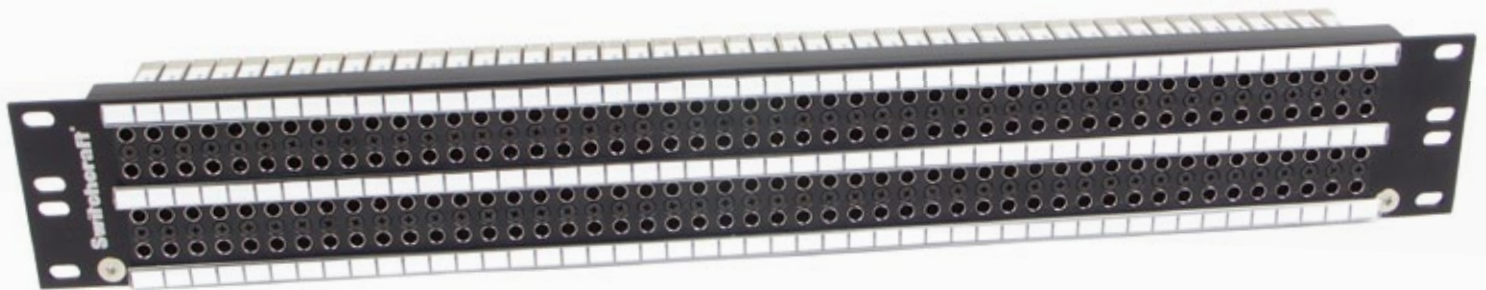
Switchcraft®

MMVP Micro Video Patchbays



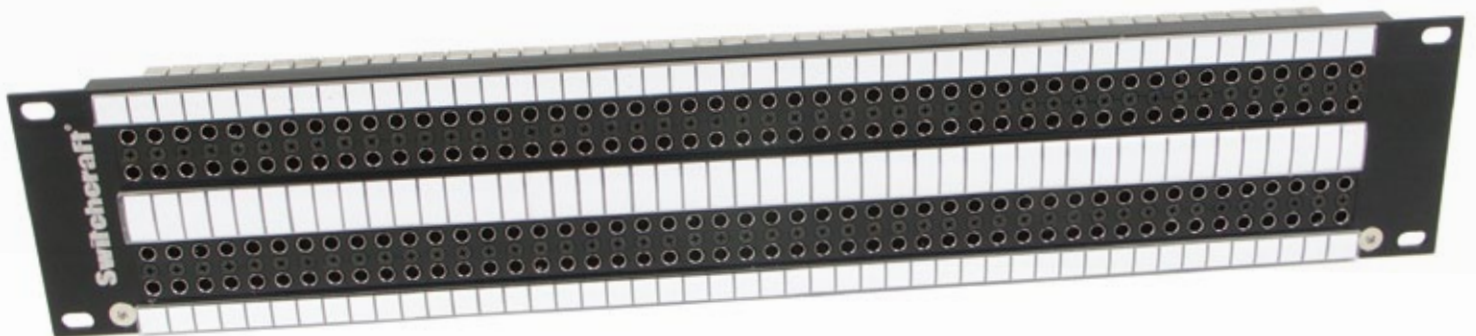
MMVP48K1NTAES

- 1RU / 96 Patch-points
- Designed for AES/EBU Digital Audio



MMVP96K275T

- 1.5RU / 192 Patch-points
- Fully Normalled
- 75 Ohm Terminated



MMVP96K375T

- 2RU / 192 Patch-points
- Fully Normalled
- 75 Ohm Terminated

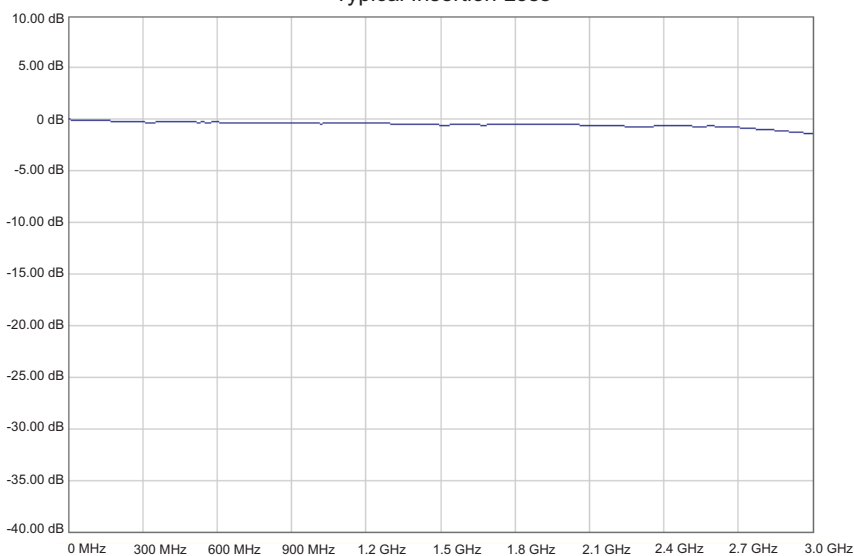


Switchcraft®

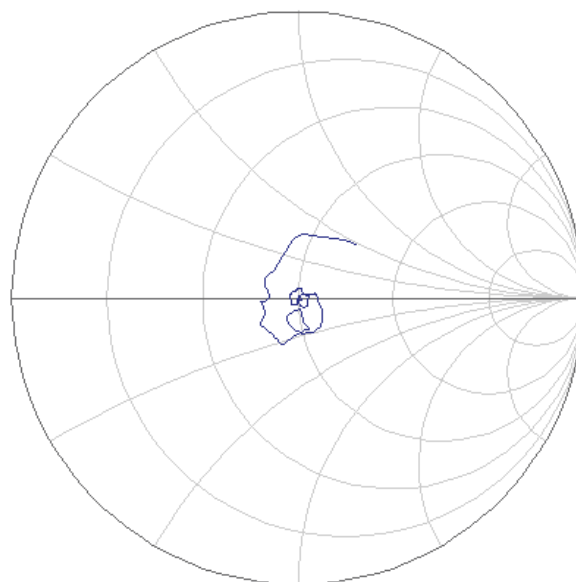
MMVP Micro Video Patchbays

| Patchbay Part Numbers | | MMVP96K2NT | 1.5RU, 4x48, Normalled, Non-Terminated |
|-----------------------|--|--------------|--|
| | | MMVP96K2N75T | 1.5RU, 4x48, Non-Normalled, Terminated |
| MMVP48K175T | 1RU, 2x48, Normalled, Terminated | MMVP96K2NNT | 1.5RU, 4x48, Non-Normalled, Non-Terminated |
| MMVP48K1NT | 1RU, 2x48, Normalled, Non-Terminated | MMVP48K375T | 2RU, 2x48, Normalled, Terminated |
| MMVP48K1N75T | 1RU, 2x48, Non-Normalled, Terminated | MMVP48K3NT | 2RU, 2x48, Normalled, Non-Terminated |
| MMVP48K1NNT | 1RU, 2x48, Non-Normalled, Non-Terminated | MMVP48K3N75T | 2RU, 2x48, Non-Normalled, Terminated |
| MMVP48K275T | 1.5RU, 2x48, Normalled, Terminated | MMVP48K3NNT | 2RU, 2x48, Non-Normalled, Non-Terminated |
| MMVP48K2NT | 1.5RU, 2x48, Normalled, Non-Terminated | MMVP96K375T | 2RU, 4x48, Normalled, Terminated |
| MMVP48K2N75T | 1.5RU, 2x48, Non-Normalled, Terminated | MMVP96K3NT | 2RU, 4x48, Normalled, Non-Terminated |
| MMVP48K2NNT | 1.5RU, 2x48, Non-Normalled, Non-Terminated | MMVP96K3N75T | 2RU, 4x48, Non-Normalled, Terminated |
| MMVP96K275T | 1.5RU, 4x48, Normalled, Terminated | MMVP96K3NNT | 2RU, 4x48, Non-Normalled, Non-Terminated |

Typical Insertion Loss

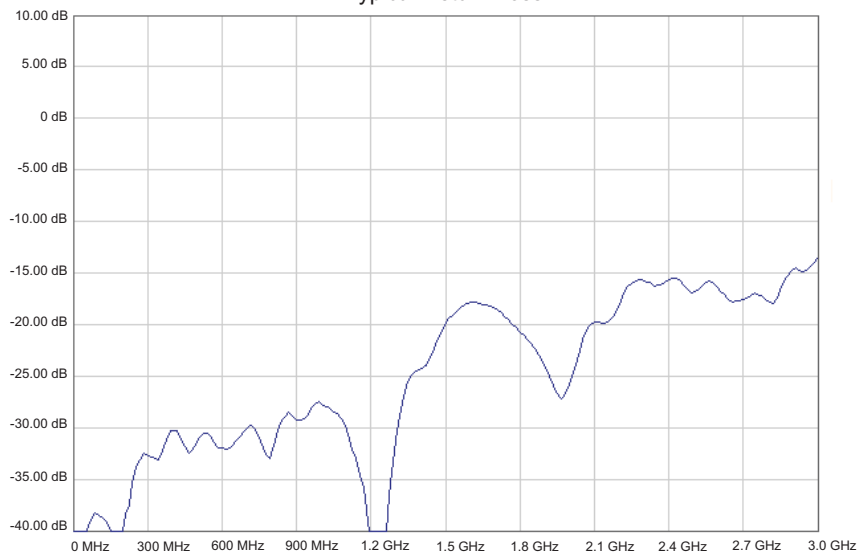


Smith Chart



Start: 30KHz / Stop: 3.0 GHz

Typical Return Loss



Switchcraft®

MMVP Micro Video Patchbays

MMVP Series Patchcords

MMVP Series patchcords are perfect for the most critical HD video and AES/EBU digital audio patching applications. They are available in a wide variety of lengths and colors. Each patchcord is assembled using premium, low loss cabling and a rugged overmolded strain relief for long lasting dependability.

Part Number Configurator

Plug Type 1-10 Ft. Color Code
VMMP + +

Color: BK = Black GN = Green Y = Yellow
 R = Red BL = Blue
 O = Orange GY = Gray



VMMP2BK

DIN 1.0/2.3 Connectors

Our DIN 1.0/2.3 connectors utilize a unique push/pull lock and release feature, simplifying installation and modification. They are 75 Ohm rated, compatible with the most widely used cable sizes, and can be terminated using a standard BNC crimp tool.



DIN1855A

Part Numbers

| | |
|----------|------------------------------|
| DIN1855A | Compatible with Belden 1855A |
| DIN179DT | Compatible with Belden 179DT |
| DIN1505A | Compatible with Belden 1505A |
| DIN1694A | Compatible with Belden 1694A |

DIN 1.0/2.3 Insertion / Withdrawal Tool

The MMVPTL insertion / withdrawal tool is 16" long and allows easy access to the DIN 1.0/2.3 connectors on the back of the patchbay, making setup and modification fast and easy.



MMVPTL





Компания «ЭлектроПласт» предлагает заключение долгосрочных отношений при поставках импортных электронных компонентов на взаимовыгодных условиях!

Наши преимущества:

- Оперативные поставки широкого спектра электронных компонентов отечественного и импортного производства напрямую от производителей и с крупнейших мировых складов;
- Поставка более 17-ти миллионов наименований электронных компонентов;
- Поставка сложных, дефицитных, либо снятых с производства позиций;
- Оперативные сроки поставки под заказ (от 5 рабочих дней);
- Экспресс доставка в любую точку России;
- Техническая поддержка проекта, помощь в подборе аналогов, поставка прототипов;
- Система менеджмента качества сертифицирована по Международному стандарту ISO 9001;
- Лицензия ФСБ на осуществление работ с использованием сведений, составляющих государственную тайну;
- Поставка специализированных компонентов (Xilinx, Altera, Analog Devices, Intersil, Interpoint, Microsemi, Aeroflex, Peregrine, Syfer, Eurofarad, Texas Instrument, Miteq, Cobham, E2V, MA-COM, Hittite, Mini-Circuits, General Dynamics и др.);

Помимо этого, одним из направлений компании «ЭлектроПласт» является направление «Источники питания». Мы предлагаем Вам помощь Конструкторского отдела:

- Подбор оптимального решения, техническое обоснование при выборе компонента;
- Подбор аналогов;
- Консультации по применению компонента;
- Поставка образцов и прототипов;
- Техническая поддержка проекта;
- Защита от снятия компонента с производства.



Как с нами связаться

Телефон: 8 (812) 309 58 32 (многоканальный)

Факс: 8 (812) 320-02-42

Электронная почта: org@eplast1.ru

Адрес: 198099, г. Санкт-Петербург, ул. Калинина, дом 2, корпус 4, литера А.