

## 1-channel Switching Gate Driver

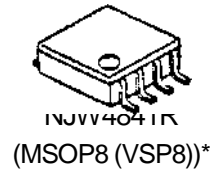
### ■ GENERAL DESCRIPTION

The NJW4841 is a High Speed Switching Gate Driver that is applicable 2A peak current.

The NJW4841 features are Withstand voltage of 40V, recommended operating voltage range: 4V to 20V and Fast switching time

The NJW4841 is suitable for DC / AC Motor Drive, Switching Power Supply and DC / DC Converter Applications.

### ■ PACKAGE OUTLINE

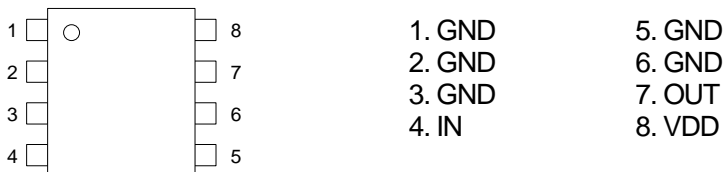


### ■ FEATURES

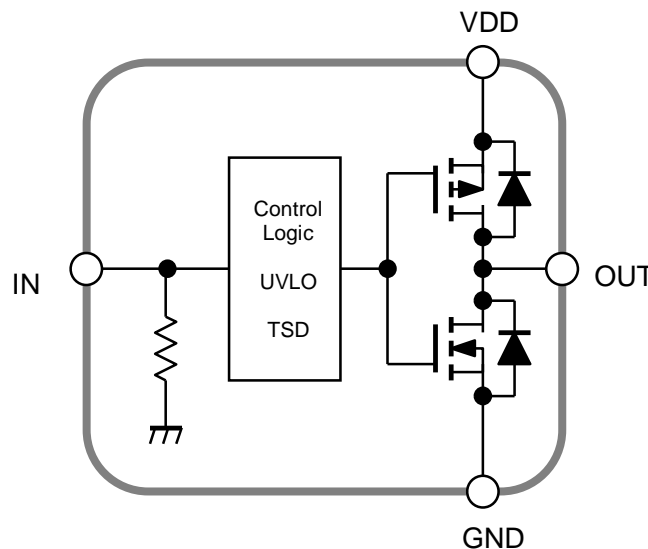
- Output Peak Current:  $\pm 2A$  (peak)
- Operating Voltage Range: 4V to 20V
- High Speed Switching:  $t_r/t_f=25ns/20ns$ (typ.) at  $C_L=2200pF$
- Corresponding with Logic Voltage Operation: 3V/5V
- Built-in Thermal Shut Down
- Under Voltage Lockout
- Package: MSOP8 (VSP8)\*

\* MEET JEDEC MO-187-DA

### ■ PIN CONFIGURATION



### ■ BLOCK DIAGRAM



# NJW4841

## ■ ABSOLUTE MAXIMUM RATINGS

(Ta=25°C)

PARAMETER	SYMBOL	RATINGS	UNIT	REMARK
Supply Voltage	V <sub>DD</sub>	+40	V	VDD-GND Pin
Input Voltage	V <sub>IN</sub>	-0.3 to +6	V	IN-GND Pin
Power Dissipation	P <sub>D</sub>	720 (*1) 1100 (*2)	mW	-
Junction Temperature	T <sub>j</sub>	-40 to +150	°C	-
Operating Temperature	T <sub>opr</sub>	-40 to +85	°C	-
Storage Temperature	T <sub>stg</sub>	-50 to +150	°C	-

(\*1): Mounted on glass epoxy board. (76.2×114.3×1.6mm: based on EIA/JDEC standard, 2Layers)

(\*2): Mounted on glass epoxy board. (76.2×114.3×1.6mm: based on EIA/JDEC standard, 4Layers),

internal Cu area: 74.2×74.2mm

## ■ RECOMMENDED OPERATING CONDITIONS

(Ta=25°C)

PARAMETER	SYMBOL	MIN.	TYP.	MAX.	UNIT	REMARK
Operating Voltage	V <sub>DD</sub>	4.0	-	20	V	VDD-GND Pin
Input Voltage	V <sub>IN</sub>	0	-	5.5	V	IN-GND Pin

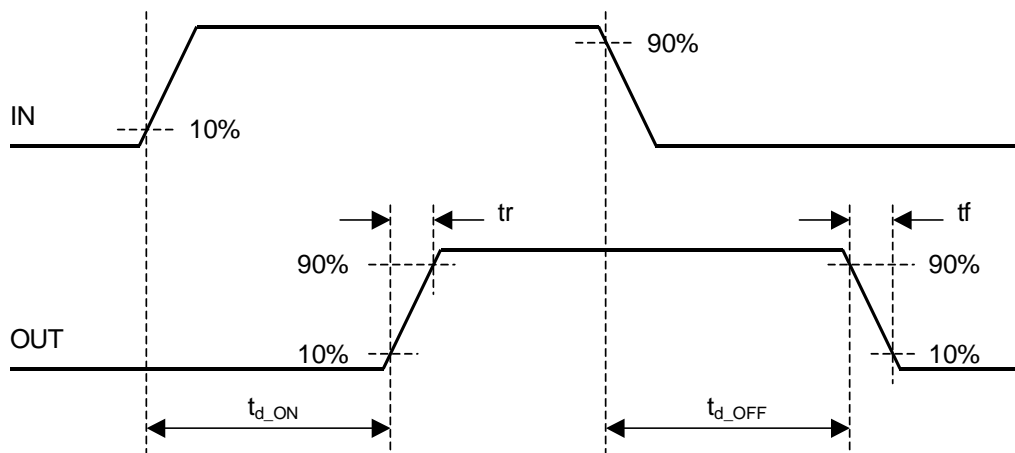
## ■ ELECTRICAL CHARACTERISTICS

(Unless otherwise noted,  $V_{DD}=16V$ ,  $T_a=25^\circ C$ )

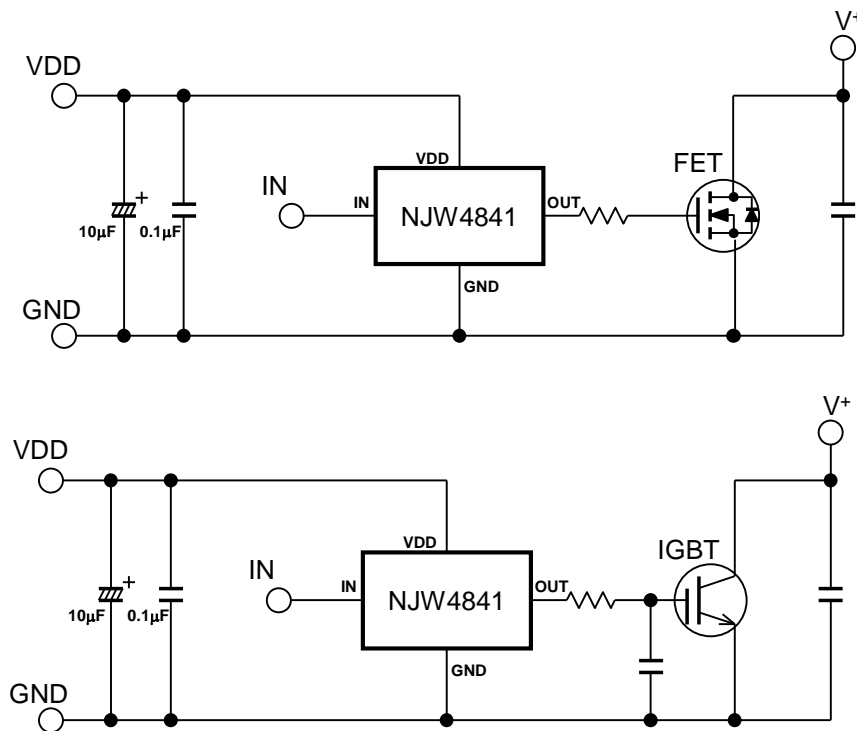
PARAMETER	SYMBOL	TEST CONDITIONS	MIN.	TYP.	MAX.	UNIT
<b>General</b>						
Quiescent Current	$I_{Q1}$	$V_{IN}=5V$	–	1.5	2.5	mA
	$I_{Q2}$	$V_{IN}=0V$	–	1.3	2.3	mA
<b>Output Block</b>						
Output Peak Current	$I_{PK1}$	Pulse Width $\leq 10\mu s$ , $V_{OUT}=0V$	–	2	–	A
	$I_{PK2}$	Pulse Width $\leq 10\mu s$ , $V_{OUT}=16V$	–	2	–	A
Output ON Resistance (High-Side / Low-Side)	$R_{DSH}$	$I_{O-SOURCE}=100mA$	–	2.1	3.9	$\Omega$
	$R_{DSL}$	$I_{O-SINK}=100mA$	–	1.5	2.8	$\Omega$
Output Pull Down Resistance	$R_{OUTPD}$		60	100	140	k $\Omega$
<b>Input Circuit Block</b>						
IN Pin High Voltage	$V_{IHIN}$		2.0	–	5.5	V
IN Pin Low Voltage	$V_{ILIN}$		0	–	0.8	V
Input Pull Down Resistance	$R_{INPD}$		60	100	140	k $\Omega$
<b>UVLO Block</b>						
UVLO Release Voltage	$V_{UVLO2}$		2.8	3.3	3.8	V
UVLO Operating Voltage	$V_{UVLO1}$		2.5	3.0	3.5	V
UVLO Hysteresis Voltage	$V_{UVLO}$	$V_{UVLO2} - V_{UVLO1}$	–	0.3	–	V
<b>Output Rise/Fall characteristics</b>						
Output Rise Time	$t_r$	$C_L=2200pF$ , $V_{IN}=0$ to $5V$	–	25	–	ns
Output Fall Time	$t_f$	$C_L=2200pF$ , $V_{IN}=5$ to $0V$	–	20	–	ns
Rise Delay Time	$t_{d ON}$	$C_L=2200pF$ , $V_{IN}=0$ to $5V$	–	40	–	ns
Fall Delay Time	$t_{d OFF}$	$C_L=2200pF$ , $V_{IN}=5$ to $0V$	–	45	–	ns

# NJW4841

## ■ TIMING CHART



## ■ TYPICAL APPLICATION



## ■ APPLICATION TIPS

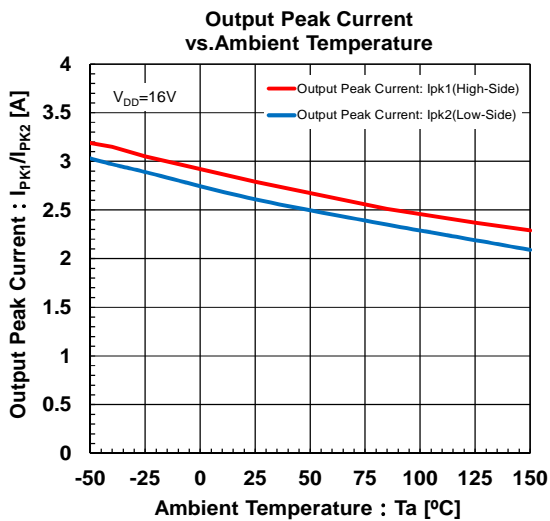
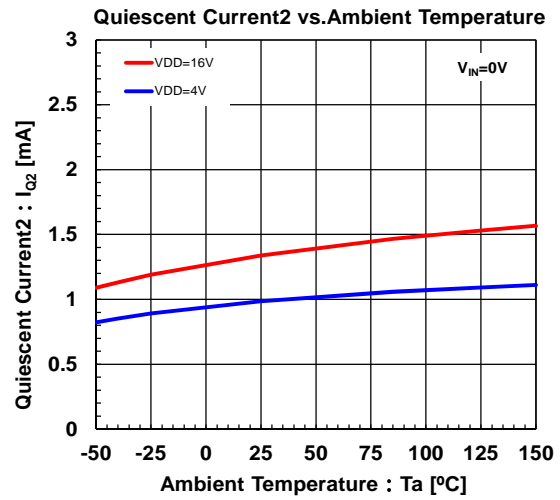
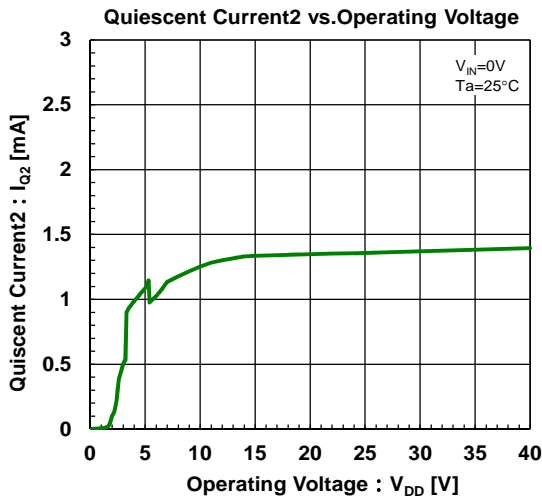
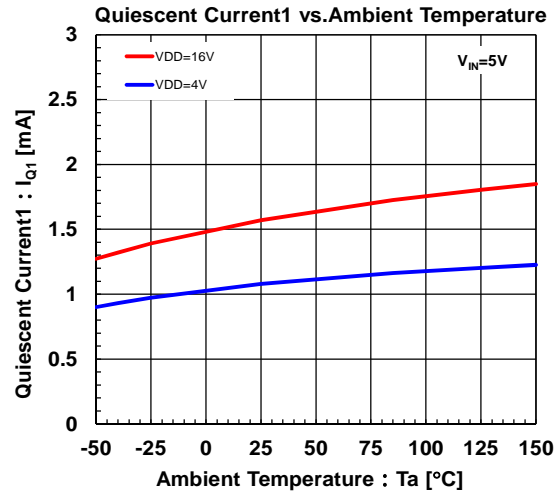
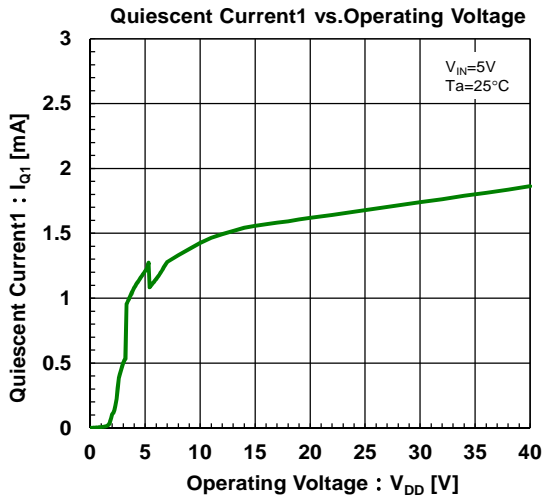
In the application that does a high-speed switching of NJW4841, because the current flow corresponds to the input frequency, the substrate (PCB) layout becomes an important.

NJW4841 is driving the High-side/Low-side SW gate with high speed to reduce switching losses. The transient voltage is generated by parasitic inductance and a high-speed current change of high side and low side SW.

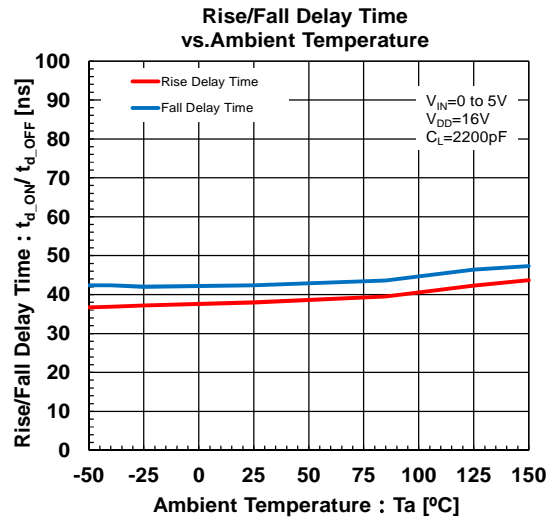
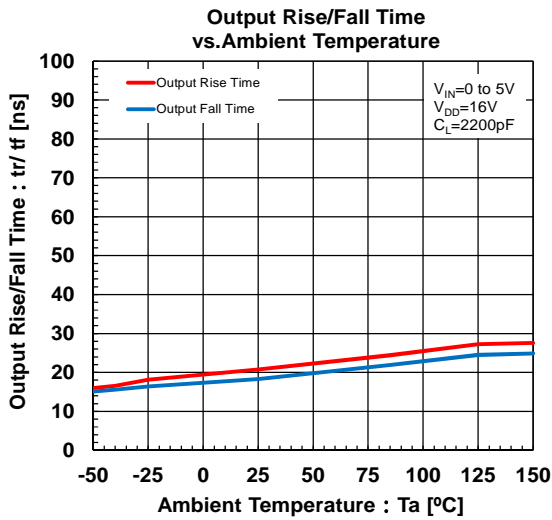
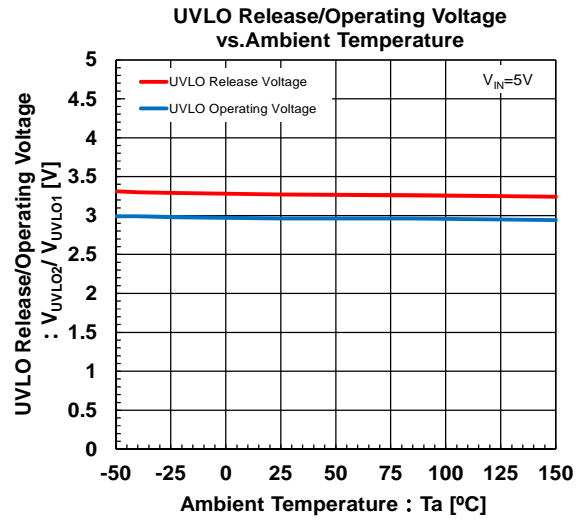
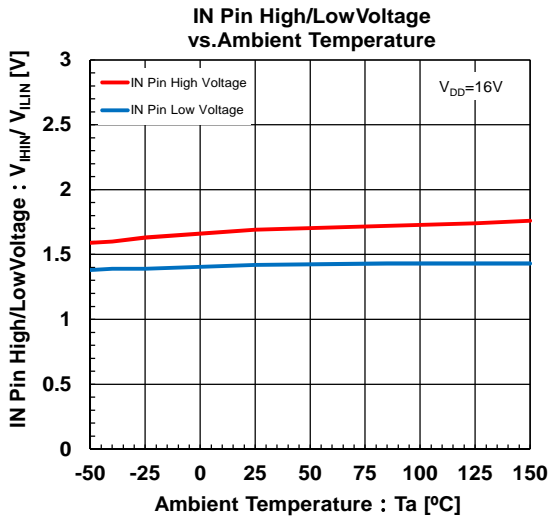
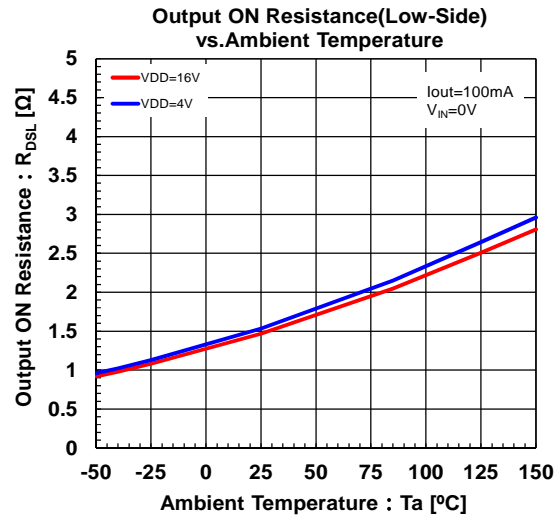
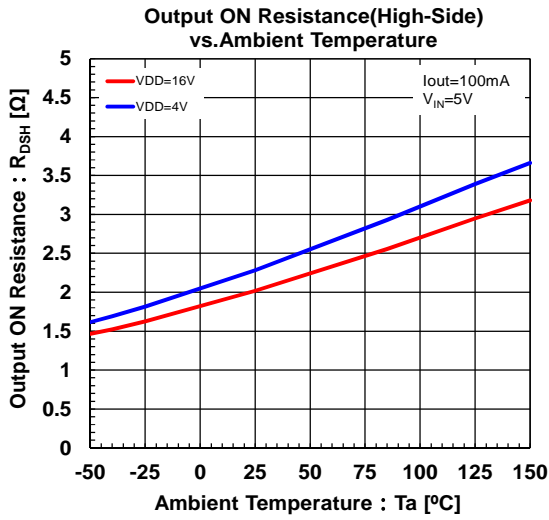
You should attempt the transient voltage decrease by making a current loop area minimize as much as possible. Therefore, you should make a current flowing line thick and short as much as possible.

You should insert a bypass capacitor between the VDD pin and the GND pin to prevent malfunction by transient voltage and/or exceed maximum input voltage rating. The recommended bypass capacitor is low ESR and fine high frequency characteristic (NJRC recommends 0.1µF or more). An aluminum electrolytic capacitor is recommended for smoothing capacitor (NJRC recommends 10µF or more). However, you should use large capacitor by sufficient evaluation (assessment) due to load condition and/or application use environment. (There is a possibility that the supply voltage rises by inductive kickback when the supply current of the inductive load is large.) The bypass capacitors should be connected as near as possible to the VDD pin.

## CHARACTERISTICS



## CHARACTERISTICS



**[CAUTION]**

The specifications on this datasheets are only given for information , without any guarantee as regards either mistakes or omissions.

The application circuits in this datasheets are described only to show representative usages of the product and not intended for the guarantee or permission of any right including the industrial rights.

# Mouser Electronics

Authorized Distributor

Click to View Pricing, Inventory, Delivery & Lifecycle Information:

[NJR:](#)

[NJW4841R-TE1](#) [NJW4841RT1-TE1](#)





Компания «ЭлектроПласт» предлагает заключение долгосрочных отношений при поставках импортных электронных компонентов на взаимовыгодных условиях!

Наши преимущества:

- Оперативные поставки широкого спектра электронных компонентов отечественного и импортного производства напрямую от производителей и с крупнейших мировых складов;
- Поставка более 17-ти миллионов наименований электронных компонентов;
- Поставка сложных, дефицитных, либо снятых с производства позиций;
- Оперативные сроки поставки под заказ (от 5 рабочих дней);
- Экспресс доставка в любую точку России;
- Техническая поддержка проекта, помощь в подборе аналогов, поставка прототипов;
- Система менеджмента качества сертифицирована по Международному стандарту ISO 9001;
- Лицензия ФСБ на осуществление работ с использованием сведений, составляющих государственную тайну;
- Поставка специализированных компонентов (Xilinx, Altera, Analog Devices, Intersil, Interpoint, Microsemi, Aeroflex, Peregrine, Syfer, Eurofarad, Texas Instrument, Miteq, Cobham, E2V, MA-COM, Hittite, Mini-Circuits, General Dynamics и др.);

Помимо этого, одним из направлений компании «ЭлектроПласт» является направление «Источники питания». Мы предлагаем Вам помощь Конструкторского отдела:

- Подбор оптимального решения, техническое обоснование при выборе компонента;
- Подбор аналогов;
- Консультации по применению компонента;
- Поставка образцов и прототипов;
- Техническая поддержка проекта;
- Защита от снятия компонента с производства.



#### Как с нами связаться

**Телефон:** 8 (812) 309 58 32 (многоканальный)

**Факс:** 8 (812) 320-02-42

**Электронная почта:** [org@eplast1.ru](mailto:org@eplast1.ru)

**Адрес:** 198099, г. Санкт-Петербург, ул. Калинина, дом 2, корпус 4, литера А.