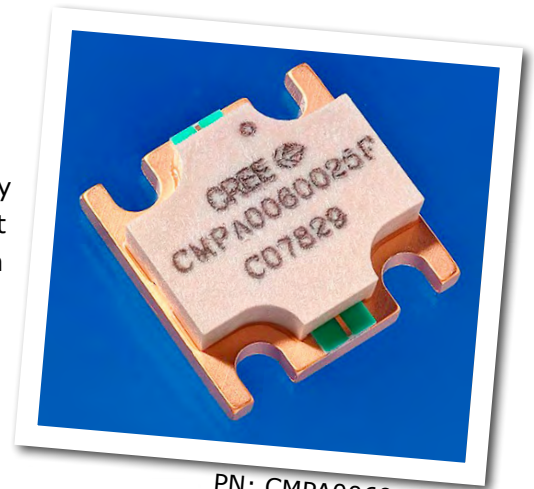


CPMA0060025F

25 W, 20 MHz-6000 MHz, GaN MMIC Power Amplifier

Cree's CPMA0060025F is a gallium nitride (GaN) High Electron Mobility Transistor (HEMT) based monolithic microwave integrated circuit (MMIC). GaN has superior properties compared to silicon or gallium arsenide, including higher breakdown voltage, higher saturated electron drift velocity and higher thermal conductivity. GaN HEMTs also offer greater power density and wider bandwidths compared to Si and GaAs transistors. This MMIC enables extremely wide bandwidths to be achieved in a small footprint screw-down package.



PN: CPMA0060025F
Package Type: 780019

Typical Performance Over 20 MHz - 6.0 GHz ($T_c = 25^\circ\text{C}$)

Parameter	20 MHz	0.5 GHz	1.0 GHz	2.0 GHz	3.0 GHz	4.0 GHz	5.0 GHz	6.0 GHz	Units
Gain	21.4	20.1	19.3	16.7	16.6	16.8	15.7	15.5	dB
Output Power @ $P_{IN} = 32\text{ dBm}$	26.9	30.2	26.3	23.4	24.5	24.0	20.9	18.6	W
Power Gain @ $P_{IN} = 32\text{ dBm}$	12.3	12.8	12.2	11.7	11.9	11.8	11.3	10.7	dB
Efficiency @ $P_{IN} = 32\text{ dBm}$	63	55	40	31	33	31	28	26	%

Note¹: $V_{DD} = 50\text{ V}$, $I_{DQ} = 500\text{ mA}$

Features

- 17 dB Small Signal Gain
- 25 W Typical P_{SAT}
- Operation up to 50 V
- High Breakdown Voltage
- High Temperature Operation
- 0.5" x 0.5" total product size

Applications

- Ultra Broadband Amplifiers
- Test Instrumentation
- EMC Amplifier Drivers

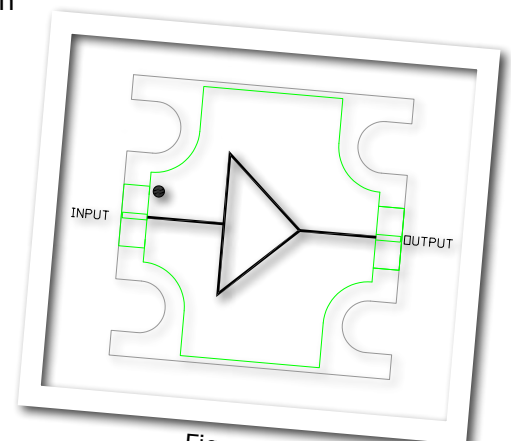


Figure 1.



Absolute Maximum Ratings (not simultaneous) at 25 °C

Parameter	Symbol	Rating	Units
Drain-source Voltage	V_{DSS}	84	VDC
Gate-source Voltage	V_{GS}	-10, +2	VDC
Storage Temperature	T_{STG}	-65, +150	°C
Operating Junction Temperature	T_J	225	°C
Maximum Forward Gate Current	I_{GMAX}	4	mA
Soldering Temperature ¹	T_S	245	°C
Screw Torque	τ	40	in-oz
Thermal Resistance, Junction to Case	$R_{\theta JC}$	3.3	°C/W
Case Operating Temperature ^{2,3}	T_C	-40, +150	°C

Note:

¹ Refer to the Application Note on soldering at www.cree.com/products/wireless_appnotes.asp

² Measured for the CMPA0060025F at $P_{IN} = 32$ dBm.

Electrical Characteristics (Frequency = 20 MHz to 6.0 GHz unless otherwise stated; $T_C = 25$ °C)

Characteristics	Symbol	Min.	Typ.	Max.	Units	Conditions				
DC Characteristics										
Gate Threshold Voltage ²	$V_{(GS)TH}$	-3.8	-3.0	-2.3	V	$V_{DS} = 20$ V, $\Delta I_D = 20$ mA				
Gate Quiescent Voltage	$V_{(GS)Q}$	-	-2.7	-	VDC	$V_{DD} = 50$ V, $I_{DQ} = 500$ mA, $P_{IN} = 32$ dBm				
Saturated Drain Current	I_{DC}	-	12	-	A	$V_{DS} = 12$ V, $V_{GS} = 2.0$ V				
RF Characteristics¹										
Power Output at P_{OUT} @ 4.5 GHz	P_{OUT1}	41.0	42.8	-	dBm	$V_{DD} = 50$ V, $I_{DQ} = 500$ mA, $P_{IN} = 32$ dBm				
Power Output at P_{OUT} @ 5.0 GHz	P_{OUT2}	41.0	43.3	-	dBm	$V_{DD} = 50$ V, $I_{DQ} = 500$ mA, $P_{IN} = 32$ dBm				
Power Output at P_{OUT} @ 6.0 GHz	P_{OUT3}	41.0	42.9	-	dBm	$V_{DD} = 50$ V, $I_{DQ} = 500$ mA, $P_{IN} = 32$ dBm				
Drain Efficiency at P_{OUT} @ 4.5 GHz	η_1	18.0	24.1	-	%	$V_{DD} = 50$ V, $I_{DQ} = 500$ mA, $P_{IN} = 32$ dBm				
Drain Efficiency at P_{OUT} @ 5.0 GHz	η_2	18.0	28.0	-	%	$V_{DD} = 50$ V, $I_{DQ} = 500$ mA, $P_{IN} = 32$ dBm				
Drain Efficiency at P_{OUT} @ 6.0 GHz	η_3	18.0	27.2	-	%	$V_{DD} = 50$ V, $I_{DQ} = 500$ mA, $P_{IN} = 32$ dBm				
Output Mismatch Stress	VSWR	-	-	5 : 1	Ψ	No damage at all phase angles, $V_{DD} = 50$ V, $I_{DQ} = 500$ mA, $P_{IN} = 32$ dBm				
Small Signal RF Characteristics										
Frequency	S21			S11			S22			Conditions
	Min.	Typ.	Max.	Min.	Typ.	Max.	Min.	Typ.	Max.	
0.02 GHz - 0.25 GHz	18.0	19.3	23.7	-	-4.1	-2.5	-	-8.5	-4.5	$V_{DD} = 50$ V, $I_{DQ} = 500$ mA
0.25 GHz - 0.5 GHz	18.0	19.8	22.0	-	-6.8	-3.5	-	-8.9	-4.5	$V_{DD} = 50$ V, $I_{DQ} = 500$ mA
0.5 GHz - 1.0 GHz	15.5	18.6	22.0	-	-15.3	-6.5	-	-6.7	-4.5	$V_{DD} = 50$ V, $I_{DQ} = 500$ mA
1.0 GHz - 2.0 GHz	15.5	18.6	22.0	-	-15.3	-12.5	-	-6.7	-4.5	$V_{DD} = 50$ V, $I_{DQ} = 500$ mA
2.0 GHz - 3.0 GHz	13.0	18.6	20.0	-	-15.3	-12.5	-	-6.0	-2.5	$V_{DD} = 50$ V, $I_{DQ} = 500$ mA
3.0 GHz - 6.0 GHz	13.0	16.3	20.0	-	-14.2	-6.5	-	-5.3	-2.5	$V_{DD} = 50$ V, $I_{DQ} = 500$ mA

Notes:

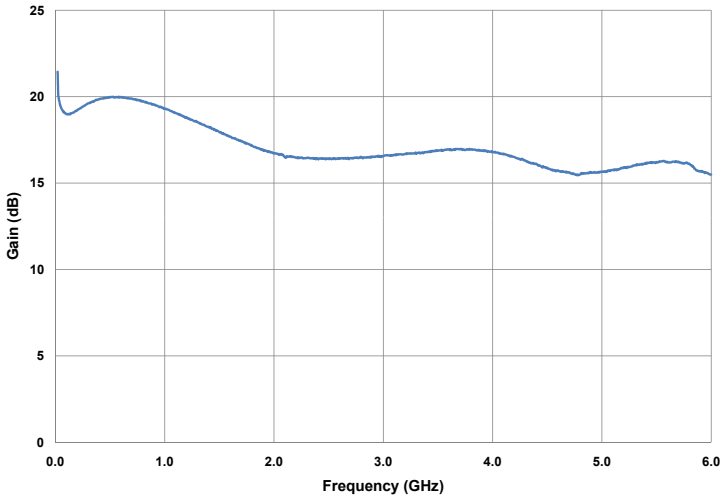
¹ P_{OUT} is defined as $P_{IN} = 32$ dBm.

² The device will draw approximately 55-70 mA at pinch off due to the internal circuit structure.

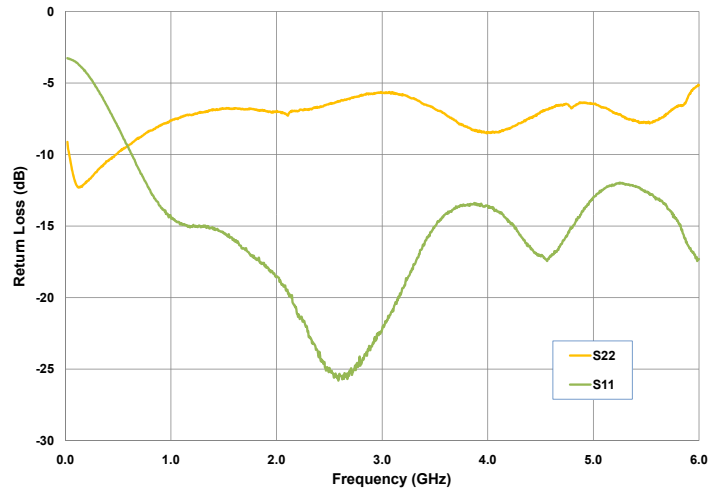


Typical Performance

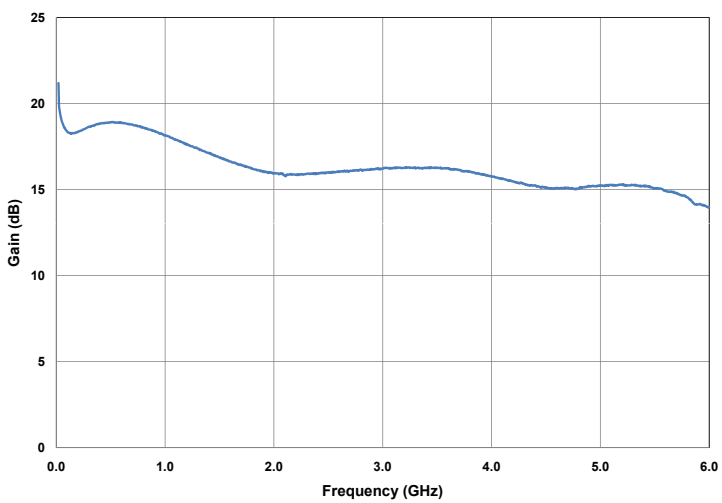
Small Signal Gain vs Frequency at 50 V



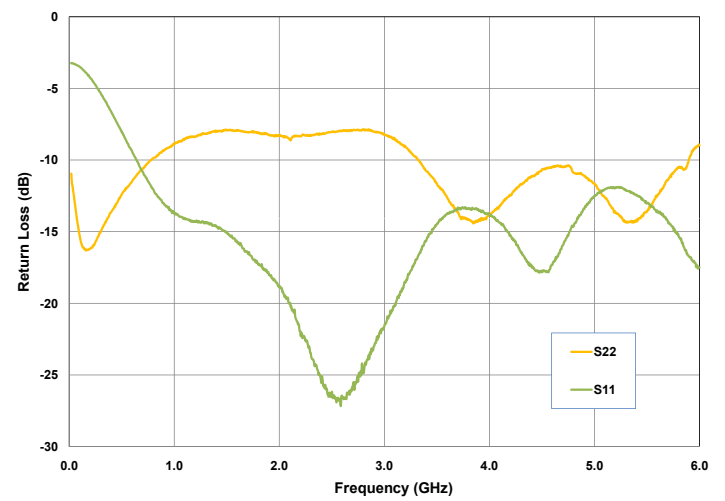
Input & Output Return Losses vs Frequency at 50 V



Small Signal Gain vs Frequency at 40 V



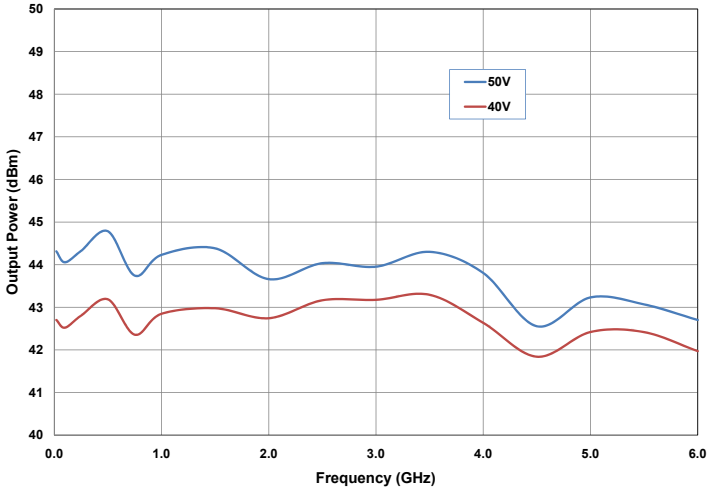
Input & Output Return Losses vs Frequency at 40 V



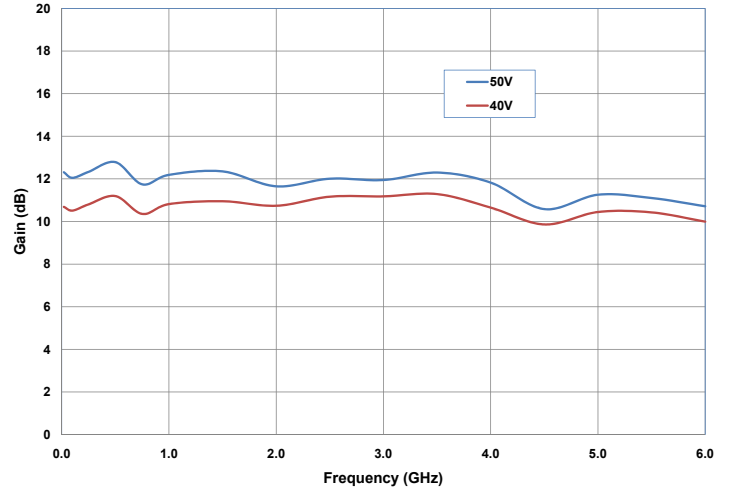


Typical Performance

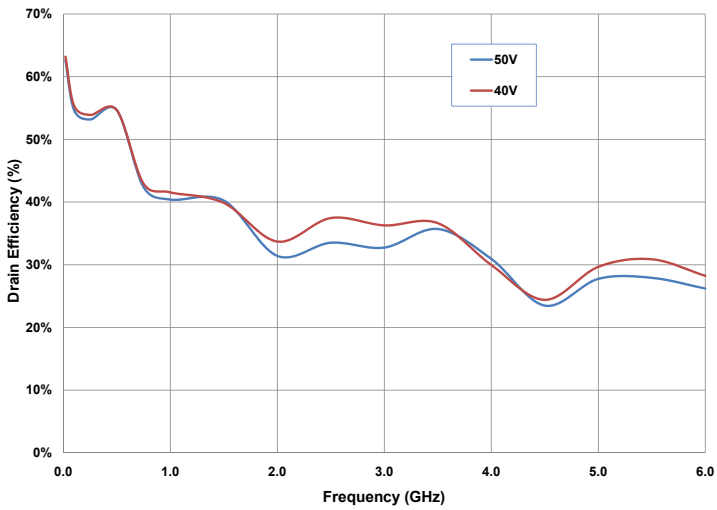
Output Power at $P_{IN} = 32$ dBm vs Frequency as a Function of Drain Voltage



Power Gain at $P_{IN} = 32$ dBm vs Frequency as a Function of Drain Voltage



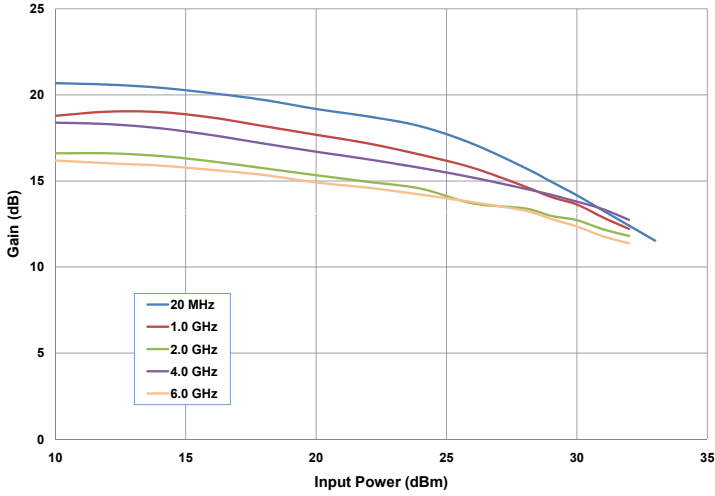
Drain Efficiency at $P_{IN} = 32$ dBm vs Frequency as a Function of Drain Voltage



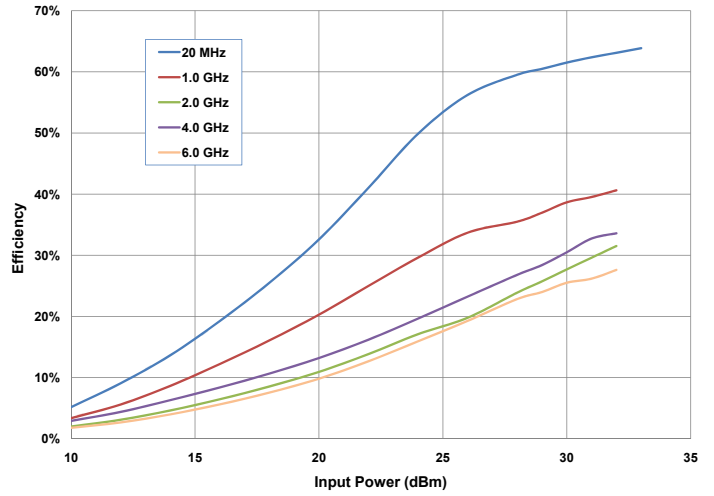


Typical Performance

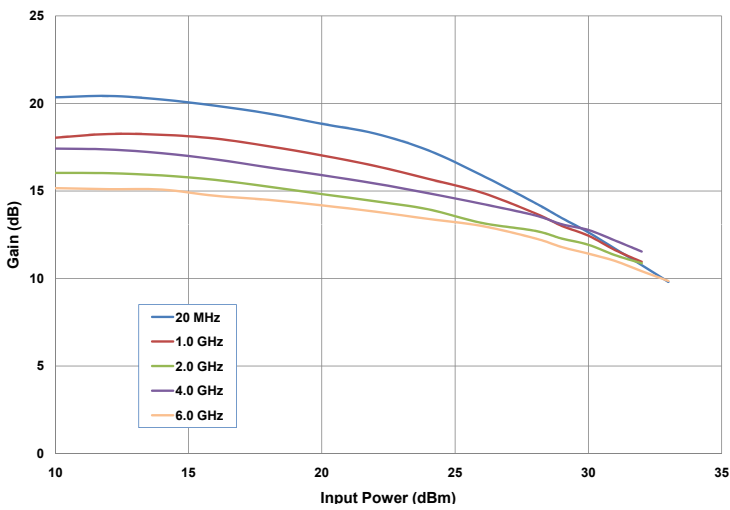
**Gain vs Input Power at 50V
as a Function of Frequency**



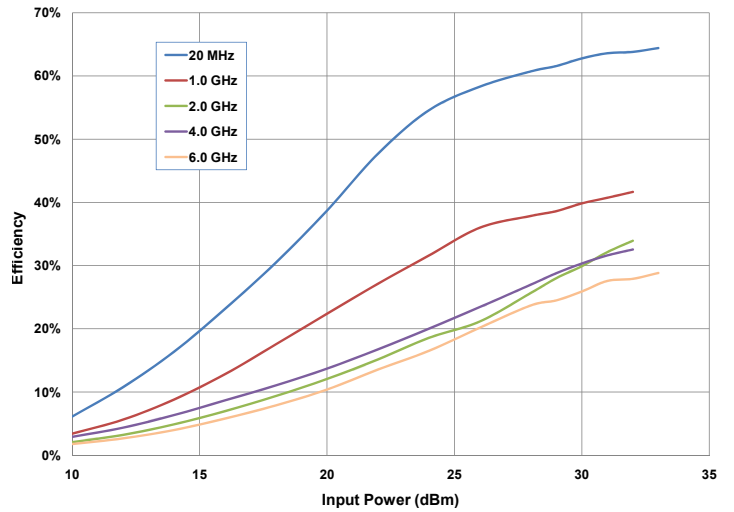
**Efficiency vs Input Power at 50 V
as a Function of Frequency**



**Gain vs Input Power at 40V
as a Function of Frequency**



**Efficiency vs Input Power at 40 V
as a Function of Frequency**



General Device Information

The CMPA0060025F is a GaN HEMT MMIC Power Amplifier, which operates between 20 MHz - 6.0 GHz. The amplifier typically provides 17 dB of small signal gain and 25 W saturated output power with an associated power added efficiency of better than 20 %. The wideband amplifier's input and output are internally matched to 50 Ohm. The amplifier requires bias from appropriate Bias-T's, through the RF input and output ports.

The CMPA0060025F is provided in a flange package format. The input and output connections are gold plated to enable gold bond wire attach at the next level assembly.

The measurements in this data sheet were taken on devices wire-bonded to the test fixture with 2 mil gold bond wires. The CMPA0060025F-TB and the device were then measured using external Bias-T's, (TECDIA: TBT-H06M20 or similar), as shown in Figure 2. The Bias-T's were included in the calibration of the test system. All other losses associated with the test fixture are included in the measurements.

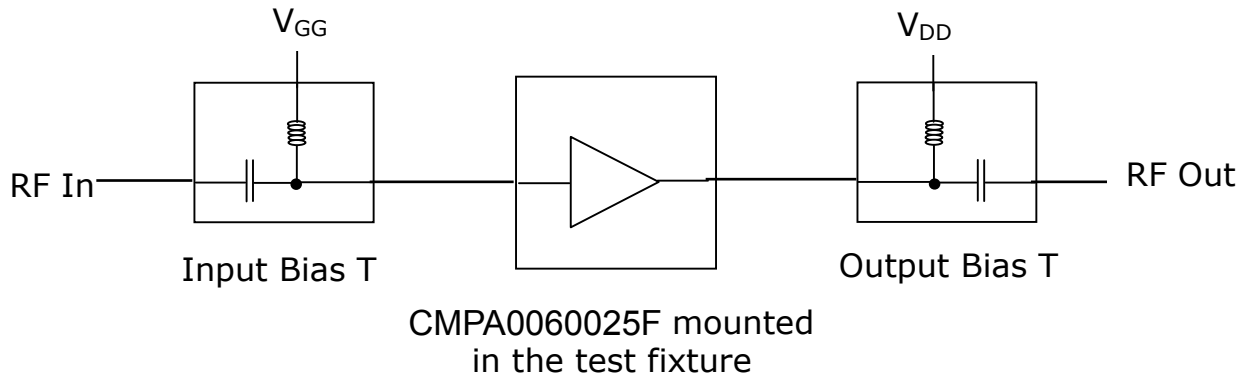
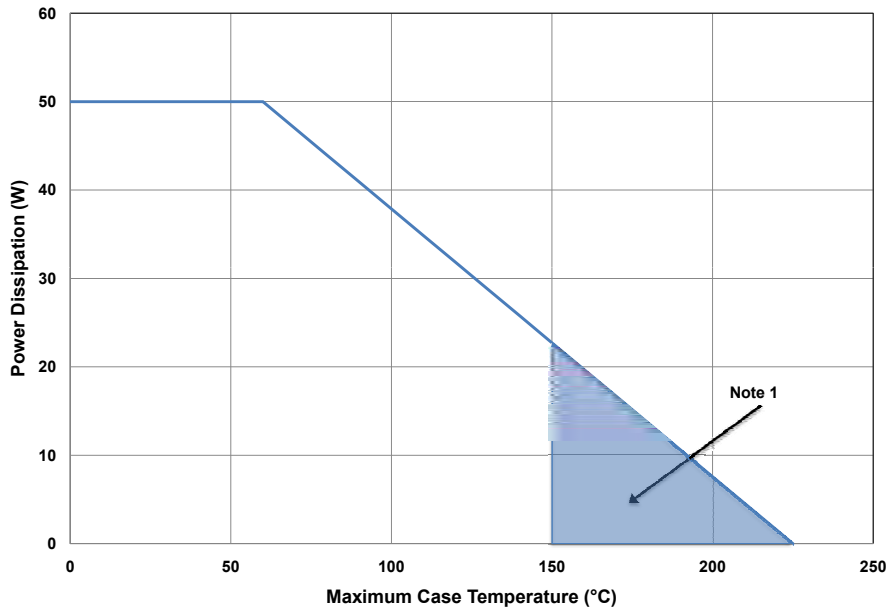


Figure 2. Typical test system setup required for measuring CMPA0060025F-TB



CPMA0060025F Power Dissipation De-rating Curve

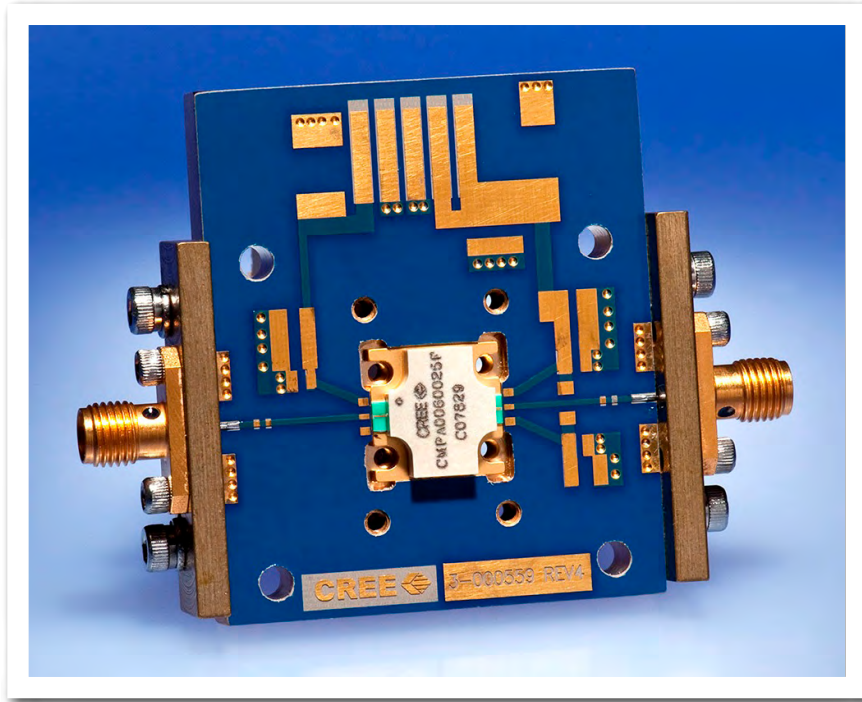


Note 1. Area exceeds Maximum Case Operating Temperature (See Page 2).

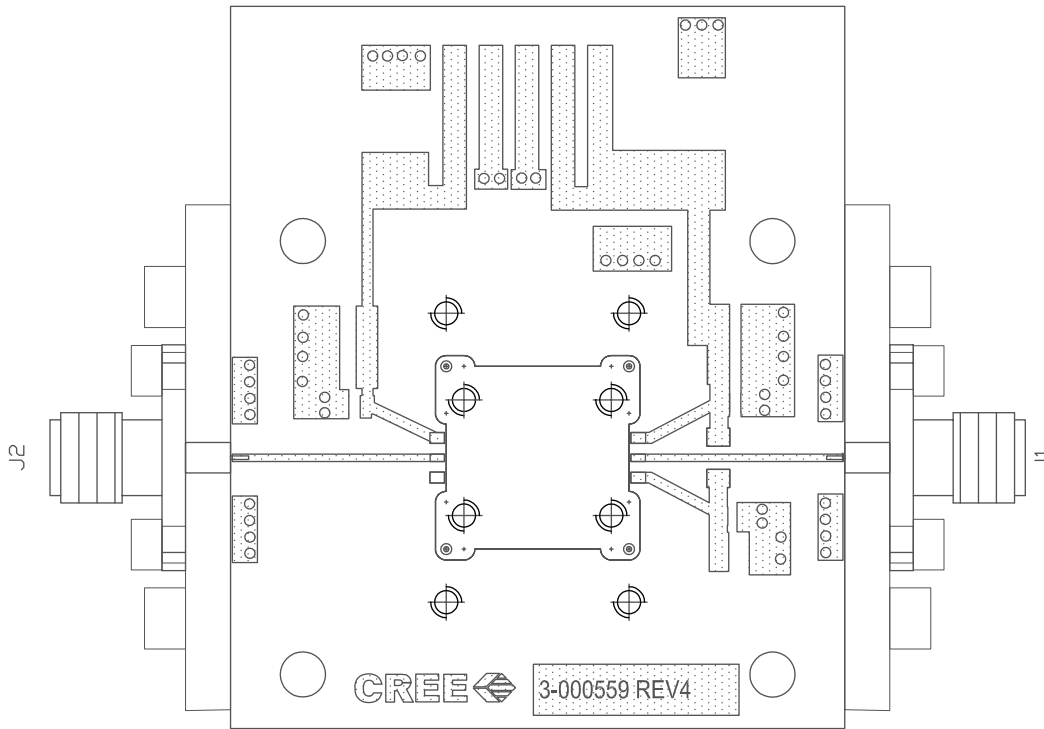
Electrostatic Discharge (ESD) Classifications

Parameter	Symbol	Class	Test Methodology
Human Body Model	HBM	1A (> 250 V)	JEDEC JESD22 A114-D
Charge Device Model	CDM	II (200 < 500 V)	JEDEC JESD22 C101-C

CMPA0060025F-TB Demonstration Amplifier Circuit



CMPA0060025F-TB Demonstration Amplifier Circuit Outline



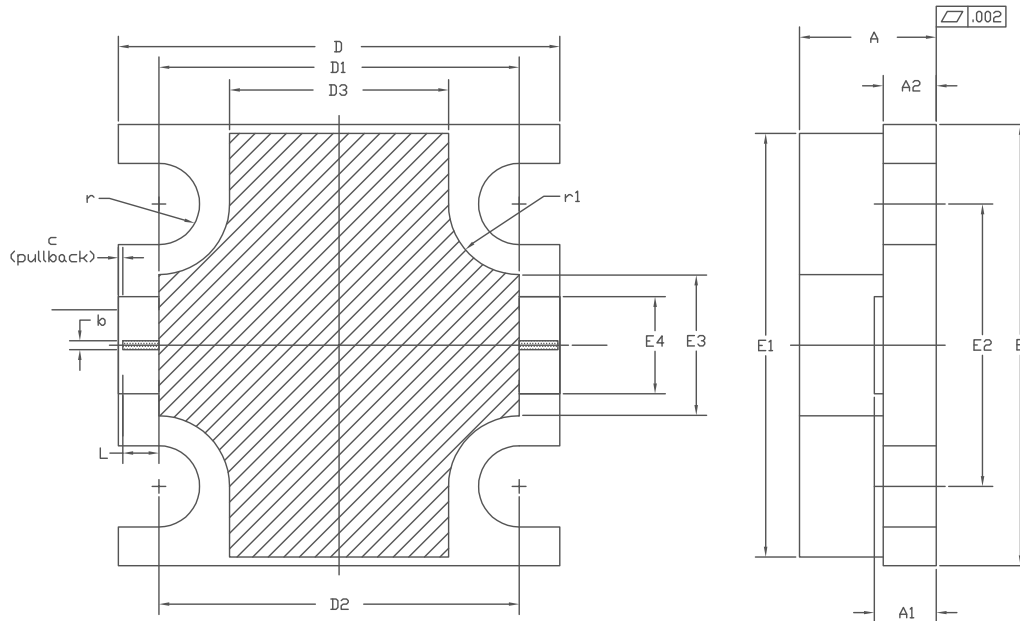
CMPA0060025F-TB Demonstration Amplifier Circuit Bill of Materials

Designator	Description	Qty
J1,J2	CONNECTOR, SMA, AMP1052901-1	2
-	PCB, TACONIC, RF-35-0100-CH/CH	1
Q1	CMPA0060025F	1

Notes

- ¹The CMPA0060025F is connected to the PCB with 2.0 mil Au bond wires.
- ²An external bias T is required.

Product Dimensions CMPA0060025F (Package Type – 780019)



NOTES:

- DIMENSIONING AND TOLERANCING PER ANSI Y14.5M, 1982.
- CONTROLLING DIMENSION: INCH.
- ADHESIVE FROM LID MAY EXTEND A MAXIMUM OF 0.020" BEYOND EDGE OF LID.
- LID MAY BE MISALIGNED TO THE BODY OF THE PACKAGE BY A MAXIMUM OF 0.008" IN ANY DIRECTION.
- ALL PLATED SURFACES ARE Ni/AU

DIM	INCHES		MILLIMETERS		NOTE
	MIN	MAX	MIN	MAX	
A	0.148	0.162	3.76	4.12	—
A1	0.066	0.076	1.67	1.93	—
A2	0.056	0.064	1.42	1.63	—
b	0.009		0.24		x2
c	0.005		0.13		x2
D	0.495	0.505	12.57	12.83	—
D1	0.403	0.413	10.23	10.49	—
D2	0.408		10.36		—
D3	0.243	0.253	6.17	6.43	—
E	0.495	0.505	12.57	12.83	—
E1	0.475	0.485	12.06	12.32	—
E2	0.320		8.13		—
E3	0.155	0.165	3.93	4.19	—
E4	0.105	0.115	2.66	2.92	—
L	0.041		1.04		x2
r	R0.046		R1.17		x4
r1	R0.080		R2.03		x4



Disclaimer

Specifications are subject to change without notice. Cree, Inc. believes the information contained within this data sheet to be accurate and reliable. However, no responsibility is assumed by Cree for its use or for any infringement of patents or other rights of third parties which may result from its use. No license is granted by implication or otherwise under any patent or patent rights of Cree. Cree makes no warranty, representation or guarantee regarding the suitability of its products for any particular purpose. "Typical" parameters are the average values expected by Cree in large quantities and are provided for information purposes only. These values can and do vary in different applications, and actual performance can vary over time. All operating parameters should be validated by customer's technical experts for each application. Cree products are not designed, intended, or authorized for use as components in applications intended for surgical implant into the body or to support or sustain life, in applications in which the failure of the Cree product could result in personal injury or death, or in applications for the planning, construction, maintenance or direct operation of a nuclear facility. CREE and the CREE logo are registered trademarks of Cree, Inc.

For more information, please contact:

Cree, Inc.
4600 Silicon Drive
Durham, North Carolina, USA 27703
www.cree.com/wireless

Sarah Miller
Marketing & Export
Cree, RF Components
1.919.407.5302

Ryan Baker
Marketing
Cree, RF Components
1.919.407.7816

Tom Dekker
Sales Director
Cree, RF Components
1.919.407.5639



Компания «ЭлектроПласт» предлагает заключение долгосрочных отношений при поставках импортных электронных компонентов на взаимовыгодных условиях!

Наши преимущества:

- Оперативные поставки широкого спектра электронных компонентов отечественного и импортного производства напрямую от производителей и с крупнейших мировых складов;
- Поставка более 17-ти миллионов наименований электронных компонентов;
- Поставка сложных, дефицитных, либо снятых с производства позиций;
- Оперативные сроки поставки под заказ (от 5 рабочих дней);
- Экспресс доставка в любую точку России;
- Техническая поддержка проекта, помощь в подборе аналогов, поставка прототипов;
- Система менеджмента качества сертифицирована по Международному стандарту ISO 9001;
- Лицензия ФСБ на осуществление работ с использованием сведений, составляющих государственную тайну;
- Поставка специализированных компонентов (Xilinx, Altera, Analog Devices, Intersil, Interpoint, Microsemi, Aeroflex, Peregrine, Syfer, Eurofarad, Texas Instrument, Miteq, Cobham, E2V, MA-COM, Hittite, Mini-Circuits, General Dynamics и др.);

Помимо этого, одним из направлений компании «ЭлектроПласт» является направление «Источники питания». Мы предлагаем Вам помощь Конструкторского отдела:

- Подбор оптимального решения, техническое обоснование при выборе компонента;
- Подбор аналогов;
- Консультации по применению компонента;
- Поставка образцов и прототипов;
- Техническая поддержка проекта;
- Защита от снятия компонента с производства.



Как с нами связаться

Телефон: 8 (812) 309 58 32 (многоканальный)

Факс: 8 (812) 320-02-42

Электронная почта: org@eplast1.ru

Адрес: 198099, г. Санкт-Петербург, ул. Калинина, дом 2, корпус 4, литера А.