



FEATURES

- 400W continuous output power
- Low profile (1U)
- IEC EN61000-3-2 compliance
- Remote sense compensation
- AC Power Fail signal
- DC Power Good signal
- Remote Inhibit control
- Droop current share
- Built-in OR-ing FET
- I²C interface
- 5V Standby
- Integrated cooling fan (variable speed)
- Over-voltage protection
- Over-current protection
- Thermal overload protection

DESCRIPTION

The CEF400-112C is a 400W active power-factor-corrected (PFC) front-end power supply for distributed power architecture (DPA) systems requiring high power density in a 1U low profile package. The built-in OR-ing FET allows the power supply to operate in active current sharing mode for redundant (N+1) operation. Additional features include I²C interface, built-in fan and a 5V standby auxiliary output. The CEF400-112 provides reliable 12V bulk power for Information Technology Equipment and Industrial Applications.



PRODUCT SPECIFICATIONS

INPUT CHARACTERISTICS					
Parameter	Conditions	Min.	Typ.	Max.	Units
Input Voltage Operating Range (AC)		85		264	V _{AC}
Input Frequency		47		63	Hz
Turn-on Input Voltage	Ramp up	76		85	V _{AC}
Turn-off Input Voltage	Ramp down	63		78	
Maximum Input Current		1.75		6.5	Arms
Inrush Current				20	Apk
Power Factor	IEC EN61000-3-2 compliant				
Leakage Current	264 V _{AC} input			0.90	mA

OUTPUT CHARACTERISTICS					
Output Voltage	Parameter	Min.	Typ.	Max.	Units
12V	Output Voltage		12.125	12.16	VDC
	Output Current	1.75		12.45	
5Vsb	Output Voltage			175	mV p-p
	Output Current	33.3			
5V	Output Voltage	4.85	5	5.15	VDC
	Output Current	4.85		5.15	
12V	Output Noise ¹	20MHz Bandwidth		50	mV p-p
	Output Current		1.3		

OBSOLETE PRODUCT

Recommended replacement MVAC400-12AFD

Parameter	Conditions	Min.	Typ.	Max.	Units
Remote Sense	Sum of +ve & -ve drops		500		mV
Efficiency	Full load, high line		83		%
Turn on Delay			2		s
Transient Response	12V Ramp 1A/μs 33% step			±375	mV
	5Vsb Ramp 1A/μs 33% step			±40	
Current Sharing Accuracy	200-720W load (2 in parallel)		45/55		%
	96-200W load (2 in parallel)		40/60		
	50-96W load (2 in parallel)		20/80		
	24-50W load (2 in parallel)		10/90		
Hold-up Time, to 10.8V	400W, 120V _{AC} line	20			ms
Isolation	Output to Chassis-Basic	500			Vrms
	Input to Chassis-Basic	1500			
Temperature Coefficient	Full load and 100V _{AC} input			0.02	% / °C

¹ Ripple and noise are measured with 0.1 μF of ceramic capacitance and 10 μF of tantalum capacitance on each of the power supply outputs. The output noise requirements apply over a 0 Hz to 20 MHz bandwidth. A short coaxial cable with 50Ω scope termination is used.

PROTECTION CHARACTERISTICS						
Parameter	Output Voltage	Conditions	Min.	Typ.	Max.	Units
Over Voltage	12V	Latching	14.065	14.5	14.935	V
Over Current		Auto-restart	36	38	42	A
Short Circuit		The 12V output shall current limit and shutdown during a shorted output condition, and shall automatically restart after the short is removed.				
Over Voltage	5Vsb	Latching	5.6		6	V
Over Current		Auto-restart	1.4	2.1	2.65	A
Over-temperature	Unit	Auto-restart	Unit shall self-protect against excessive internal temperatures and automatically recover.			
Input Undervoltage	No damage will be sustained by operation at voltages below the specified input operating voltage range.					

MONITORING AND CONTROL SIGNALS	
AC Fail	TTL logic signal goes high to denote loss of AC input. Power supply will provide a minimum of 5ms from loss of AC input before this signal goes high. Additionally a minimum of 3ms of holdup will be provided between the signal going high and the output going out of regulation. The signal will not go high when loss of AC input is less than 5ms in duration.
DC OK	TTL logic goes high after the output is in regulation. It goes low when there is loss of regulation.
Remote On/Off	TTL logic input signal disables the output when held low, and enables the output when held high.
Remote Sense	Compensates for 0.5 V lead drop min. Will operate without remote sense connected. Unit is protected against reverse connection of the remote sense lines.

EMISSIONS AND IMMUNITY	
EMI	EN55022 Class B conducted
Electromagnetic Susceptibility	
ESD	IEC/EN 61000-4-2, Level 3
Electromagnetic Field	IEC/EN 61000-4-3, Level 3
Electrical Fast Transients/Burst	IEC/EN 61000-4-4, Level 3
Surge	IEC/EN 61000-4-5, Level 3
RF Conducted Immunity	IEC/EN 61000-4-6, Level 3
Magnetic Field Immunity	IEC/EN 61000-4-8, Level 3
Power Frequency Magnetic Field Immunity	IEC/EN 61000-4-11, Level 3

SAFETY		ENVIRONMENTAL OPERATING CONDITIONS		Min.	Typ.	Max.	Units
UL	UL60950-1 (E151252)	Operating Temperature	Non-condensing	-40		+ 85	°C
cUL	CSA C22.2 No. 60950-1	Storage Temperature Range	w/o derating	0		50	
CB	US/13399/UL per IEC60950-1	Relative Humidity	Non-condensing	10		90	%
Material Flammability	UL 94V-0	Moisture Humidity		5		95	

OBSOLETE PRODUCT
Recommended replacement MVAC400-12AFD

RELIABILITY		
MTBF	Calculated ² per MIL-HDBK-217N2, GB, 25°C, Quality Level I	212khrs
	Calculated ² per Telcordia SR-332, Issue 1, Method 1, Case 3, GFC, Ground fixed, Controlled, Quality Level I	293khrs

MECHANICAL	
Dimensions	4.0" × 7.0" × 1.59" (101.6mm × 177.8mm × 40.39mm)
Weight	2.0 lbs (0.91 kgs)
Vibration	Designed to meet IEC 68-2-6 to the levels from IEC 721-3-2
Shock	Designed to meet IEC 68-2-27
Drop	Designed to meet IEC 68-2-31
Tip over	Designed to meet IEC 68-2-31

I ² C INTERFACE	
Software Remote On/Off over I ² C	Writing 0x7F at address 40 disables the output of the unit Writing 0xFF at address 40 enables the output of the unit
Parametric Reporting Read Byte	Reading at address 40 over I2C lines, give the 'Parametric Reporting Read Byte', which is detailed below

BIT 7	BIT 6	BIT 5	BIT 4	BIT 3	BIT 2	BIT 1	BIT 0
Output Enable	NOT USED (normal 1)	NOT USED (normal 1)	NOT USED (normal 1)	Over Temperature	Fan Fault	Output OK	Input Ok

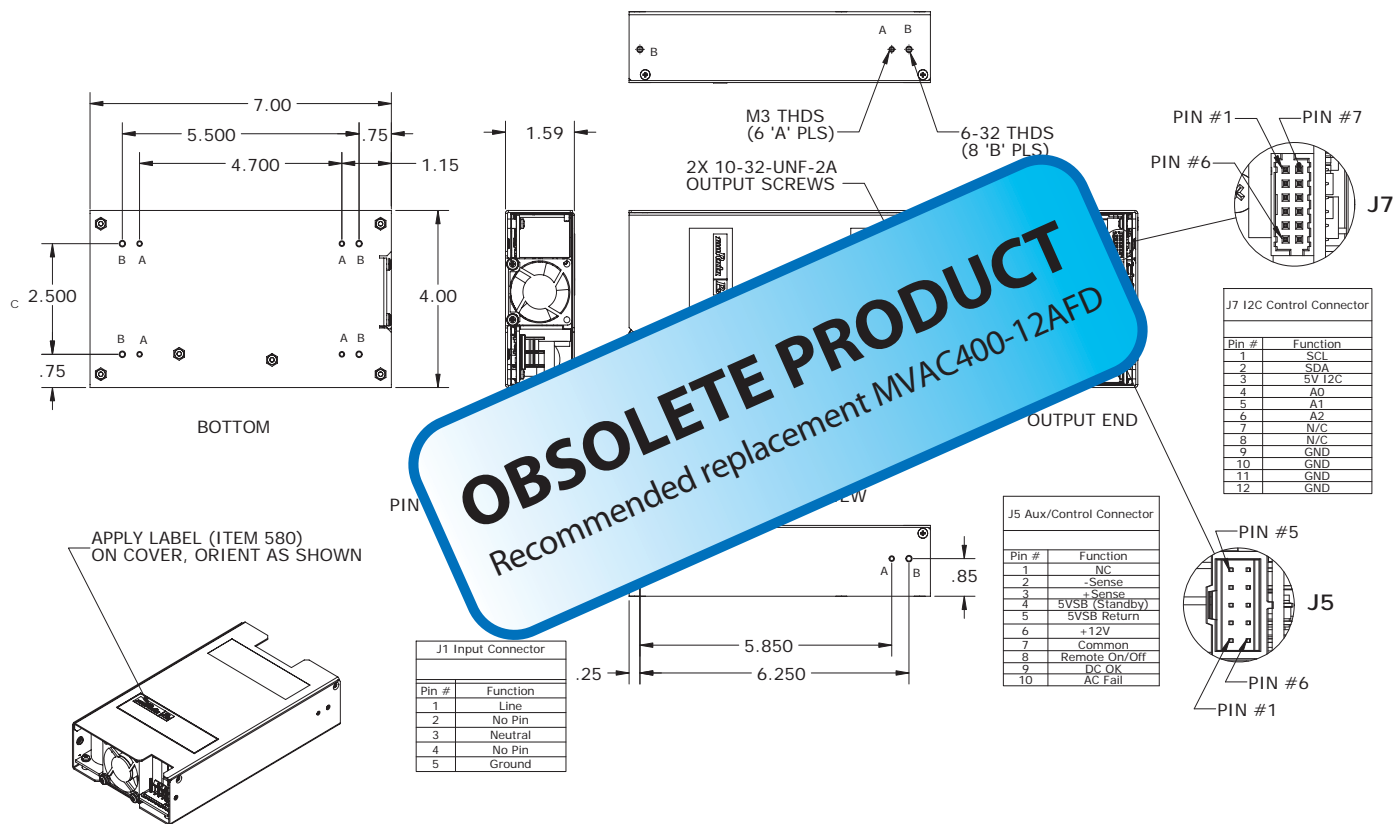
BIT 7	Output Enable	1	Unit Enabled
		0	Unit Disabled
BIT 6	NOT USED	1	Set to 1
BIT 5	NOT USED	1	Set to 1
BIT 4	NOT USED	1	Set to 1

BIT 3	Over Temperature	1	Over temperature exists
		0	No over temperature
BIT 2	Fan Fault	1	Fan locked rotor fault exists
		0	Fan OK
BIT 1	Output OK	1	Output fault exists
		0	Output OK
BIT 0	Input OK	1	Input fault exists
		0	Input OK

Notes
Specifications subject to change without notice.
Specifications are at factory settings.
Warranty: 1 year.

²Calculated figures exclude the integral fan.

MECHANICAL DIMENSIONS



J1 (Molex #26-62-4051, 5 Position, 3-Pin, .156" Straight Header)
Mating Plug Housing Molex #09-50-8051
Mating Crimp Terminal Molex #08-52-0113

J5 (Molex #90130-3210, 10 Position C-Grid-III Receptacle, .100")
Mating Plug Housing Molex #90142-0012
Mating Crimp Terminal Molex #90119-0121

J7 (Molex #87833-1231, 12 Position 2mm Milli-Grid)
Mating Plug Housing Molex #51110-1260
Mating Crimp Terminal Molex #50394-8100

Murata Power Solutions, Inc.
11 Cabot Boulevard, Mansfield, MA 02048-1151 U.S.A.
ISO 9001 and 14001 REGISTERED



This product is subject to the following **operating requirements** and the **Life and Safety Critical Application Sales Policy**:
Refer to: <http://www.murata-ps.com/requirements/>

Murata Power Solutions, Inc. makes no representation that the use of its products in the circuits described herein, or the use of other technical information contained herein, will not infringe upon existing or future patent rights. The descriptions contained herein do not imply the granting of licenses to make, use, or sell equipment constructed in accordance therewith. Specifications are subject to change without notice.
© 2012 Murata Power Solutions, Inc.



Компания «ЭлектроПласт» предлагает заключение долгосрочных отношений при поставках импортных электронных компонентов на взаимовыгодных условиях!

Наши преимущества:

- Оперативные поставки широкого спектра электронных компонентов отечественного и импортного производства напрямую от производителей и с крупнейших мировых складов;
- Поставка более 17-ти миллионов наименований электронных компонентов;
- Поставка сложных, дефицитных, либо снятых с производства позиций;
- Оперативные сроки поставки под заказ (от 5 рабочих дней);
- Экспресс доставка в любую точку России;
- Техническая поддержка проекта, помощь в подборе аналогов, поставка прототипов;
- Система менеджмента качества сертифицирована по Международному стандарту ISO 9001;
- Лицензия ФСБ на осуществление работ с использованием сведений, составляющих государственную тайну;
- Поставка специализированных компонентов (Xilinx, Altera, Analog Devices, Intersil, Interpoint, Microsemi, Aeroflex, Peregrine, Syfer, Eurofarad, Texas Instrument, Miteq, Cobham, E2V, MA-COM, Hittite, Mini-Circuits, General Dynamics и др.);

Помимо этого, одним из направлений компании «ЭлектроПласт» является направление «Источники питания». Мы предлагаем Вам помощь Конструкторского отдела:

- Подбор оптимального решения, техническое обоснование при выборе компонента;
- Подбор аналогов;
- Консультации по применению компонента;
- Поставка образцов и прототипов;
- Техническая поддержка проекта;
- Защита от снятия компонента с производства.



Как с нами связаться

Телефон: 8 (812) 309 58 32 (многоканальный)

Факс: 8 (812) 320-02-42

Электронная почта: org@eplast1.ru

Адрес: 198099, г. Санкт-Петербург, ул. Калинина, дом 2, корпус 4, литера А.