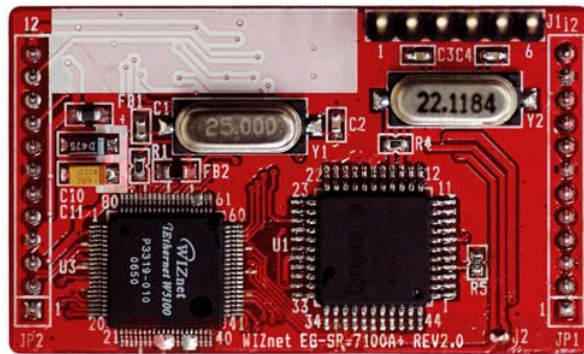


# WIZ100SR User's Manual

(Version 1.1)

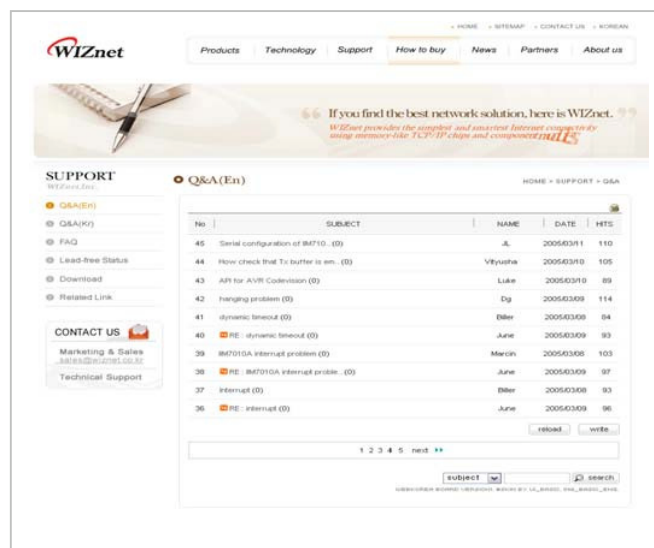
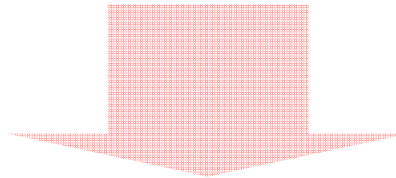
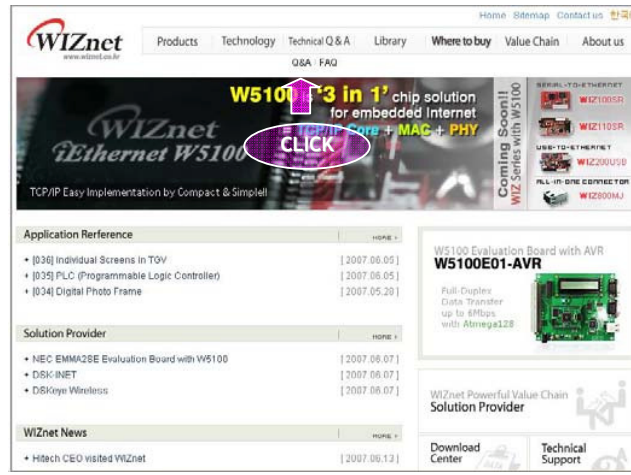


©2007 WIZnet Co., Inc. All Rights Reserved.

☞ For more information, visit our website at <http://www.wiznet.co.kr>

# WIZnet's Online Technical Support

If you have something to ask about WIZnet products, write down your question on [Q&A Board](#) in WIZnet website ([www.wiznet.co.kr](http://www.wiznet.co.kr)). WIZnet will give an answer as soon as possible.



## COPYRIGHT NOTICE

Copyright 2007 WIZnet, Inc. All Rights Reserved.

Technical Support: [support@wiznet.co.kr](mailto:support@wiznet.co.kr)

Sales & Distribution: [sales@wiznet.co.kr](mailto:sales@wiznet.co.kr)

For more information, visit our website at <http://www.wiznet.co.kr>

# Table of Contents

1.	Introduction .....	1
1.1	<b>Key Features</b> .....	1
1.2	Products Contents (EVB model) .....	1
1.3	Products Specification .....	2
1.3.1.	WIZ100SR Module .....	2
1.3.2.	WIZ100SR Test Board .....	3
1.3.2.1.	Serial Interface .....	4
1.3.2.2.	LED .....	5
2.	Getting Started .....	5
2.1	Hardware Installation Procedure .....	5
2.2	Configuration Tool .....	6
2.2.1.	Network Configuration .....	6
2.2.2	Serial configuration .....	11
3.	Firmware Upload .....	15
4.	<b>Serial Configuration</b> .....	17
4-1.	<b>Serial Command Format</b> .....	17
4-2.	<b>WIZ110SR Configuration with Serial Command</b> .....	19
5.	PIN Assignment and Dimension .....	21
6.	Demonstration and Test .....	23
6.	<b>Reference Schematic</b> .....	29

## Figures

FIGURE 1. WIZ100SR TEST BOARD.....	3
FIGURE 2. SERIAL PIN ASSINGMENT OF WIZ100SR TEST BOARD .....	4
FIGURE 3. SERIAL CABLE.....	5
FIGURE 4. CONFIGURATION TOOL (NETWORK CONFIG) .....	6
FIGURE 5. TCP SERVER MODE.....	8
FIGURE 6. TCP CLIENT MODE .....	9
FIGURE 7. UDP MODE .....	10
FIGURE 8. CONFIGURATION TOOL (SERIAL CONFIG.).....	11
FIGURE 9. CONFIGURATION TOOL (OPTION CONFIG.).....	12
FIGURE 10. SELECT OPERATION MODE FOR PASSWORD SETTING .....	14
FIGURE 11. BOARD SEARCH WINDOW .....	15
FIGURE 12. OPEN DIALOG BOX FOR UPLOADING.....	16
FIGURE 13. FIRMWARE UPLOADING WINDOW .....	16
FIGURE 14. COMPLETE UPLOADING.....	16
FIGURE 15. SERIAL CONFIGURATION ENABLE SETTING .....	19
FIGURE 16. SERIAL COMMAND.....	20
FIGURE 17. WIZ100SR PIN ASSIGNMENT.....	21
FIGURE 18. WIZ100SR DIMENSION .....	22
FIGURE 19. DATA FLOW (SERIAL -> ETHERNET).....	23
FIGURE 20. DATA FLOW (ETHERNET -> SERIAL).....	24
FIGURE 21. RESULT WINDOW AFTER RUNNING "SETTING" .....	25
FIGURE 22. SERIAL TERMINAL PROGRAM CONFIGURATION .....	26
FIGURE 23. NETWORK TERMINAL PROGRAM CONFIGURATION .....	26
FIGURE 24. RECEIVED DATA BY NETWORK TERMINAL PROGRAM.....	27
FIGURE 25. DEVICE TERMINAL PROGRAM.....	28
FIGURE 26. SCHEMATI .....	29

## Tables

TABLE 1. PRODUCTS CONTENTS .....	2
TABLE 2. WIZ100SR MODULE SPECIFICATION .....	3
TABLE 3 SERIAL PIN DESCRIPTION .....	4
TABLE 4. SERIAL COMMAND – COMMAND FRAME FORMAT .....	17
TABLE 5. SERIAL COMMAND - REPLY FRAME FORMAT.....	17
TABLE 6. SERIAL COMMAND - STX & ETX .....	17
TABLE 7. SERIAL COMMAND – REPLY CODE .....	17
TABLE 8. SERIAL COMMAND – COMMAND CODE.....	19
TABLE 9. SERIAL COMMAND TESTING PROCEDURE.....	20
TABLE 10 WIZ100SR PIN FUNCTIONS.....	22
TABLE 11 WIZ100SR DIMENSION.....	23

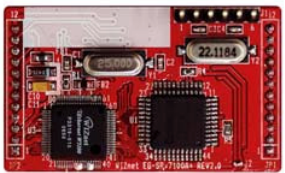

# 1. Introduction

WIZ100SR is a gateway module that converts RS-232 protocol into TCP/IP protocol. It enables remote gauging, managing and control of a device through the network based on Ethernet and TCP/IP by connecting to the existing equipment with RS-232 serial interface. In other words, WIZ100SR is a protocol converter that transmits the data sent by serial equipment as TCP/IP data type and converts back the TCP/IP data received through the network into serial data to transmit back to the equipment

## 1.1 Key Features

- Direct Connection to the Serial Device
  - Adding Network Function Simply and Quickly
  - Providing Firmware Customization
- System Stability and Reliability by using W5100 Hardware Chip
- Supports PPPoE Connection
- Supports Serial Configuration - with Simple and Easy command
- Supports Password for the Security
- Configuration Tool Program
- 10/100 Ethernet Interface and max 230Kbps Serial Interface
- RoHS Compliant

## 1.2 Products Contents (EVB model)

	<p>WIZ100SR Module</p>
	<p>WIZ100SR Test Board</p>

	<p>Serial Cable (to connect Serial device and Test board)</p>
	<p>Network Cable (Crossover Cable)</p>
	<p>Power (DC 5V 500mA Adaptor)</p>
	<p>CD (including Manual, H/W Schematic and S/W)</p>

Table 1. Products Contents

### 1.3 Products Specification

#### 1.3.1. WIZ100SR Module

Category	Specification
Protocol	TCP, UDP, IP, ARP, ICMP, IGMP, Ethernet MAC, PPPoE
Network Interface	10/100 Base-T Ethernet (Auto detection)
Serial Port	1 RS-232 port (3.3V LVTTTL)
CPU	8051 compatible
Serial line format	8-N-1, 8-O-1, 8-E-1, 7-O-1, 7-E-1

Serial flow control	None, XON/XOFF, CTS/RTS
Serial signal	TXD, RXD, RTS, CTS, DTR, DSR, GND
Software	Remote Downlod and Configuration
Serial Transmission Speed	1200bps ~ 230Kbps
Memory	Internal Memory (62KB Flash Memory, 2KB EEPROM, 16KB SRAM)
Temperature	10°C ~ 80°C (Operating), -40~85°C (Storage)
Humidity	10~90%
Power	3.3V, 150mA
Connector type	2x12 2mm Pin header array
Size	50mm x 30mm x 8.85mm

Table 2. WIZ100SR Module Specification

### 1.3.2. WIZ100SR Test Board

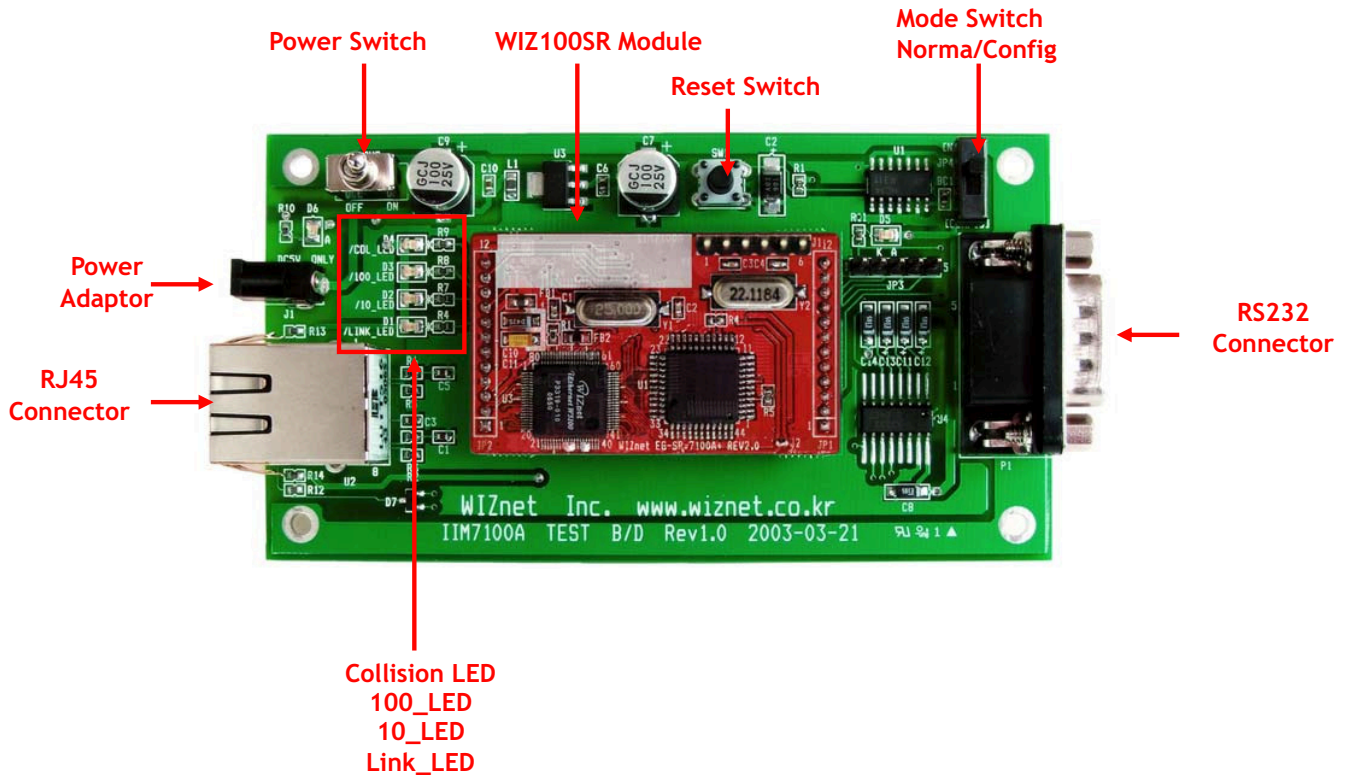
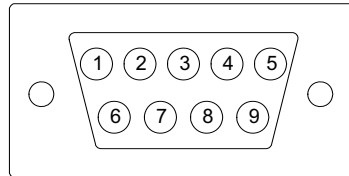


Figure 1. WIZ100SR Test Board



☞ **NOTE** : Be careful of setting Mode Switch. If Mode Switch is set as Config mode, the network function is not normally operating. For the function test, set it as Normal mode.  
 → If LED(D5) is on, it indicates that network is connected or Config mode is set.

### 1.3.2.1. Serial Interface



**Figure 2. Serial Pin Assingment of WIZ100SR Test Board**

Pin Number	Signal	Description
1	NC	Not Connected
2	RxD	Receive Data
3	TxD	Transmit Data
4	DTR	Data Terminal Ready
5	GND	Ground
6	DSR	Data Set Ready
7	RTS	Request To Send
8	CTS	Clear To Send
9	NC	Not Connected

**Table 3 Serial Pin Description**

- RxD, TxD, GND : These are all you need if the device does not use hardware handshaking.
- RxD, TxD, GND, RTS, CTS : These are the signals used when serial device uses hardware handshaking.
- DTR, DSR : not used

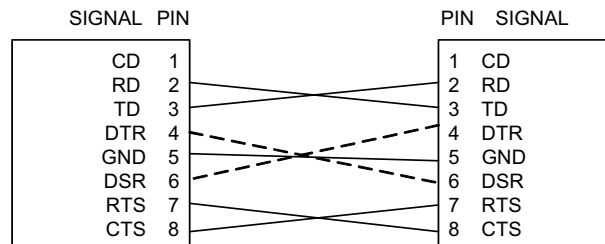


Figure 3. Serial Cable

### 1.3.2.2. LED

- Power LED: displays power status of WIZ100SR
- Link LED: indicates network link is established
- 10 LED: indicates network speed is 10Mbps
- 100 LED: indicates network speed is 100Mbps
- Collision LED: indicates a packet transmitted from the Ethernet controller to the network has collided with another packet

## 2. Getting Started

### 2.1 Hardware Installation Procedure

For the testing, module and test board should be prepared.

- **STEP1:** Plug the WIZ100SR module into the sockets on the test board.
  - ☞ Be careful of connecting the JP1 on the module to the correct JP1 on the test board.
  - ☞ Use test board rev 2.0 or above for WIZ100SR testing.
- **STEP2:** Connect the RJ-45 connector of WIZ100SR test board to the Ethernet hub or LAN port of PC.
- **STEP3:** Connect the DB9 jack of WIZ100SR and serial device with RS-232 serial line.
- **STEP4:** Connect the 5V (500mA) DC power adaptor to the WIZ100SR test board. The power used for WIZ100SR is 3.3V.

## 2.2 Configuration Tool

### 2.2.1. Network Configuration

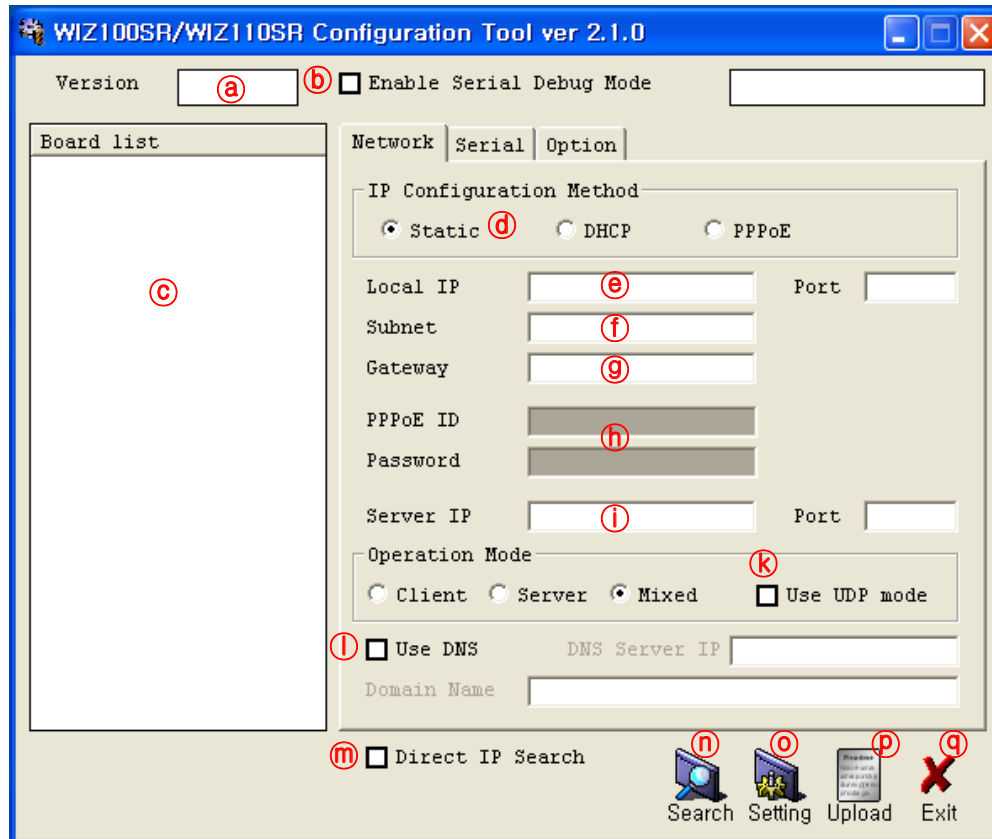


Figure 4. Configuration Tool (Network Config)

Ⓐ **Version** : Displays firmware version.

You can use [PPPoE](#), [Serial Command](#), [Password](#) function from firmware Ver.2.5.

Ⓑ **Enable Serial Debug Mode** : If this mode is checked, you can monitor the status and socket message of WIZ110SR (listen OK, connect fail etc.) through serial terminal. If Debug mode is on, debug message can cause abnormal operation of the serial device. Therefore, just use this mode only for Debug mode.

Ⓒ **Board List** : If you click “Search” button, all the MAC addresses on a same subnet, will be displayed.

Ⓓ **IP Configuration Method**: Select IP setting mode, you can select among Static, DHCP, PPPoE mode.

- **Static**: “Static” is option for setting WIZ110SR IP as static. First select MAC address which

you wanted to set as static IP in 'board list'. Then "Local IP, Subnet, Gateway box enabled. Input Static IP address and click "setting" button. Then IP set as you wanted.(PPPoE ID, Password box is disabled)

- **DHCP**: Set this option to use DHCP mode. First, check 'DHCP' and click 'Setting' button. If IP address is successfully acquired from DHCP server, the MAC address will be displayed on the board list. (It takes some time to acquire IP address from DHCP server)

When a module on the board list is selected, IP address, Subnet mask and Gateway are displayed. If module could not acquire network information from DHCP server, IP address, Gateway Address and Subnet mask will be initialized to 0.0.0.0.

- **PPPoE** : WIZ110SR support PPPoE for ADSL user. When you select PPPoE in "IP Configuration Method" PPPoE ID, Password box enabled.

1. To set PPPoE, connect PC to WIZ110SR directly and execute Configuration Tool program on PC. (Configuration Tool Version should be 2.1 or above)
2. Select 'PPPoE' of the "IP Configuration Method" tab and input ID & Password.
3. Click "setting" button to apply.
4. Connect Module to ADSL Line.
5. If "Enable Serial Debug Mode" is selected, you can see PPPoE access status via Serial Console.

```
WIZ100SR/WIZ110SR Ver. 02.02
-- PHASE 0. PPPoE(ADSL) setup process --

-- PHASE 1. PPPoE Discovery process -- ok

-- PHASE 2. LCP process -- ok

-- PHASE 3. PPPoE(ADSL) Authentication mode --
Authentication protocol : c223 00,
-- Waiting for PPPoE server's admission --ok

-- PHASE 4. IPCP process --ok
```

ⓐ **Local IP/Port** : WIZ100SR's IP address and Port number for network connection

ⓑ **Subnet** : WIZ110SR's subnet mask

ⓒ **Gateway** : WIZ110SR's Gateway address

ⓓ **PPPoE ID/Password** : If you select 'PPPoE' mode, input ID/Password which you received from ISP company.

ⓔ **Server IP/Port** : When WIZ110SR is set as "Client mode" or Mixed mode", server IP and Hardwired Internet Connectivity Wizard (WIZnet, Inc.)

port should be set. WIZ110SR attempts to connect this IP address.

① **Network mode:** client/server/mixed :

This is to select the communication method based on TCP - TCP Server, TCP Client, and Mixed. TCP is the protocol to establish the connection before data communication, but UDP just proceeds the data communication without connection establishment.

TCP Server operates as a server and TCP Client as a client on the connection establishment. The mixed mode supports both of TCP server and client.

👉 This Network mode is just related to the connection establishment process. It just defines who will request the connection first and who will be waiting for the connection requests.

<TCP server mode>

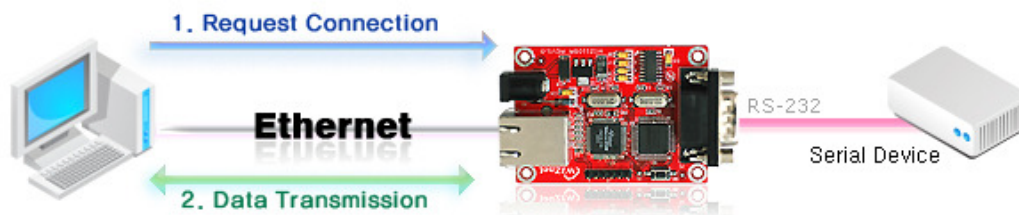


Figure 5. TCP Server mode

At the TCP Server mode, WIZ110SR waits for the connection requests.

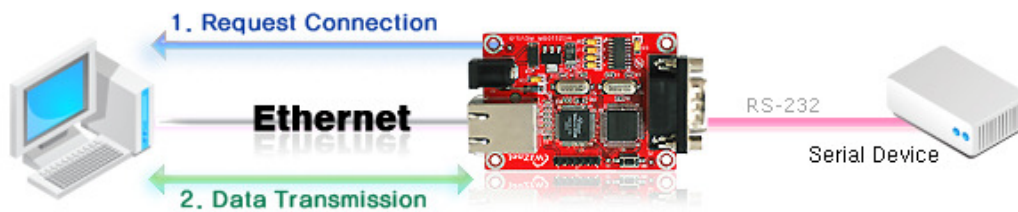
TCP Server mode can be useful when the monitoring center tries to connect to the device (where WIZ110SR is installed) in order to check the status or provide the commands. In normal time WIZ110SR is on the waiting status, and if there is any connection request from the monitoring center, data communication is processed and connection is closed.

In order to operate this mode, Local IP, Subnet, Gateway Address and Local Port Number should be configured first.

As illustrated in the above figure, data transmission proceeds as follows,

1. The host connects to the WIZ110SR which is configured as TCP Server mode.
2. As the connection is established, data can be transmitted in both directions - from the host to the WIZ110SR, and from the WIZ110SR to the host

<TCP client mode>



**Figure 6. TCP Client mode**

If WIZ110SR is set as TCP Client, it tries to establish connection to the server.

To operate this mode, Local IP, Subnet, Gateway Address, Server IP, and Server port number should be set. If server IP had domain name, use DNS function.

In TCP Client mode, WIZ110SR can actively establish a TCP connection to a host computer when power is supplied.

As illustrated in the above figure, data transmission proceeds as follows:

1. As power is supplied, WIZ110SR board operating as TCP client mode actively establishes a connection to the server.
2. If the connection is complete, data can be transmitted in both directions - from the host to the WIZ110SR and from WIZ110SR to the host

#### <Mixed mode>

In this mode, WIZ110SR normally operates as TCP Server and waits for the connection request from the peer. However, if WIZ110SR receives data from the serial device before connection is established, it changes to the client mode and sends the data to the server IP. Therefore, at the mixed mode, the server mode is operated prior to the client mode.

As like TCP Server mode, the Mixed mode is useful for the case that the monitoring center tries to connect to the serial device (in which WIZ110SR is used) to check device status. In addition to this, if any emergency occurs in the serial device, the module will change to Client mode to establish the connection to the server and deliver the emergency status of the device.

#### Ⓚ Use UDP mode

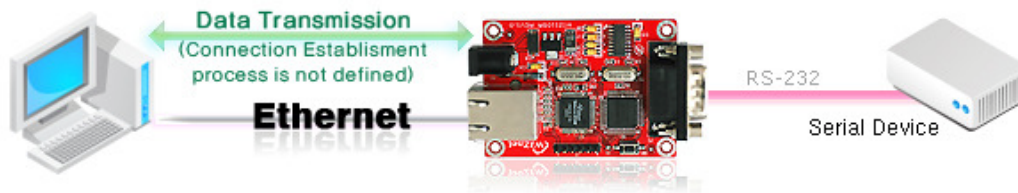


Figure 7. UDP mode

At the UDP mode, the connection establishment is not defined. Just set the IP address and port number of the peer and send the data.

① **Use DNS** : If DNS function is needed, check this option and input the domain name of DNS server. DNS(Domain Name System) is the database system having information about IP address and corresponding domain name. When connecting to domain name, you can use DNS function of WIZ110SR. Input IP address of DNS server provided by ISP in *DNS Server IP*, and domain name in the *Server (Domain)*

#### ② **Direct IP Search**

Direct IP Search can be used for searching WIZ110SR not installed in the same subnet.

If the Direct IP search is checked, the configuration tool use the TCP instead UDP broadcast to search modules. Therefore, network information of the module such as IP address, subnet mask and gateway is required.

If you check Direct IP search, the field to input IP address will be activated. In this field, input IP address of the module, and click “Search” button.

**✘ If module does not have valid network information, Direct IP search is not available.**

#### ③ **Search**

The Search function is used to search all modules existing on the same LAN. By using UDP broadcast, all modules on the same subnet will be searched.

The searched module is displayed as MAC address in the “Board list”.

#### ④ **Setting**

This function is to complete the configuration change.

If you select the MAC address from the “Board list”, the default configuration value of the module will be displayed. Change the configuration and click “Setting” button to complete the configuration. The module will re-initialize with the changed configuration.

The configuration value can be changed in below steps.

① Select the mac address of which configuration value should be changed in the “Board list.

The values configured will be displayed.

- ② Change the value
- ③ Click “Setting” button. The configuration change will be complete.
- ④ The module will be initialized to the changed values (re-booting is processed)
- ⑤ To check configuration result, click ‘Search’ button.

#### Ⓟ Upload

Firmware will be uploaded through network

➤ After uploading the firmware, 20~30 seconds are required for initialization.

- ⑨ Exit : Close the configuration tool program.

### 2.2.2 Serial configuration

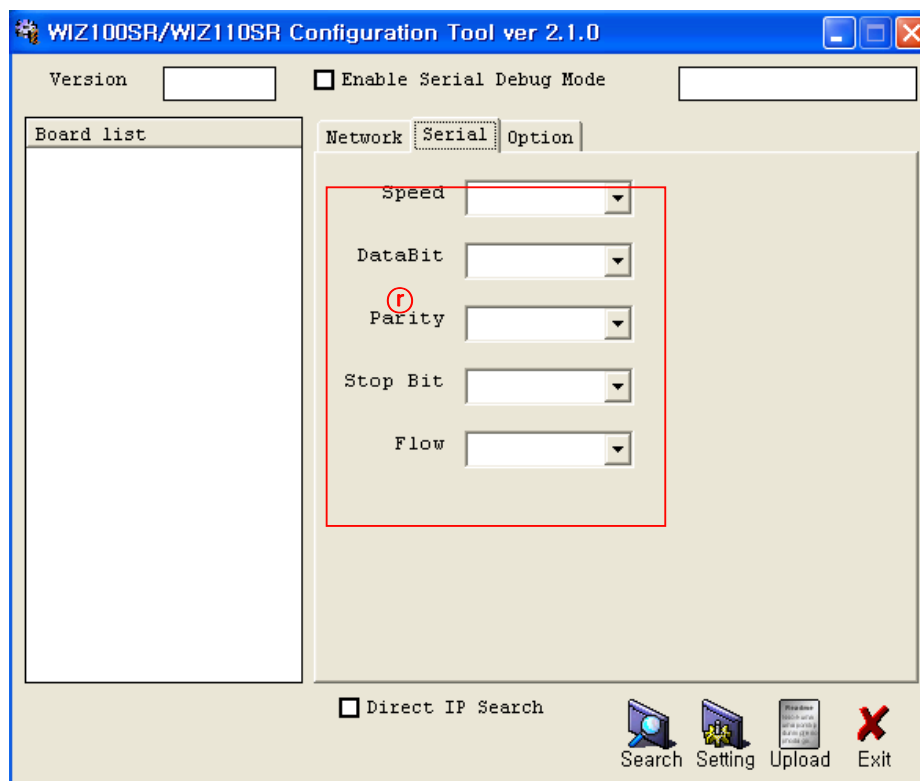


Figure 8. Configuration Tool (Serial Config.)

#### Ⓡ Serial

Serial Configuration value of selected module is displayed.

In order to change the serial configuration of WIZ100SR, this menu can be used.



☞ By clicking the “Setting” button, changed value can be applied.

### 2.2.3 Option configuration

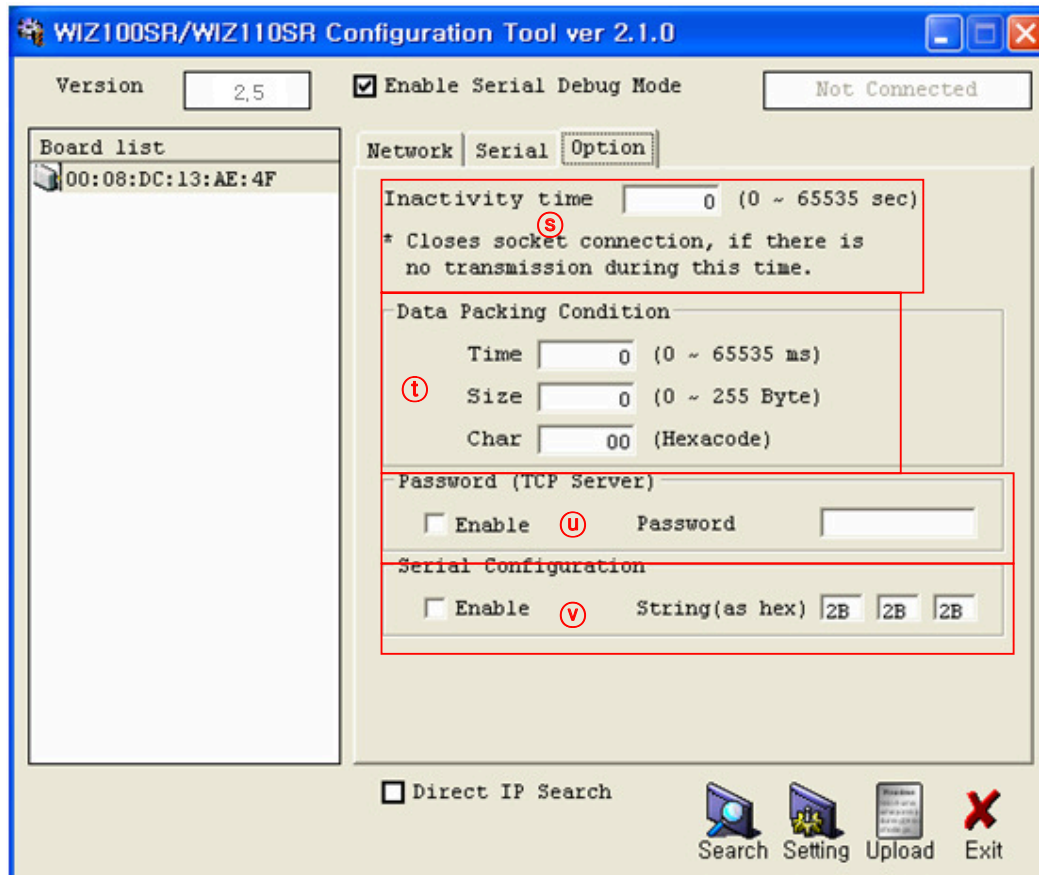


Figure 9. Configuration Tool (Option Config.)

#### Ⓢ Inactivity time

After the connection is established, if there is not data transmission within the time defined in Inactivity time, the connection is closed automatically.

The default value is '0'. If '0' is set, this function is not activated. In this default setting, the connection is maintained even though there is no data transmission. In order to close the connection, the 'Close' command should be given.

This function can be used for more than two or more systems to connect to a WIZ110SR module. If one system keeps connection to the WIZ110SR, other systems can not connect to the module. If there is no data transmission during the time defined in Inactivity time, the connection will be closed for other system to be connected.

Inactivity Time also can be useful for the case when the server system is unexpectedly shut down. In this status, if there is not any data communication during the time defined in the Inactivity time, WIZ110SR will close the connection and enter into waiting status.

#### ① Data Packing Condition

You can designate how the serial data can be packed to be sent to the Ethernet. There are 3 delimiters - time, size and character. If all of them are set as '0', whenever the serial data is arrived, they are sent to the Ethernet.

- a. Time: Every designated time, serial data converted to Ethernet.
- b. Size: Every designated data size, serial data converted to Ethernet.
- c. Char: Every designated character, serial data converted to Ethernet. (It's available only Hex.)

When any of three delimiters is satisfied, data can be sent to the Ethernet.

Ex) Delimiter: Size=10, Char=0x0D

Serial data : 0123456789abc

Ethernet data : 0123456789

☞ "abc" data remains in the serial buffer of module

#### ② Password

'Password' function is for blocking client's access which is not allowed

'Password' function can be operated only in 'TCP Server' mode. If 'password' function works, clients should input password to access.

1. Execute Configuration Tool program.(Configuration Tool version should be 2.1 or above)
2. Select 'Server' of "Operation Mode".

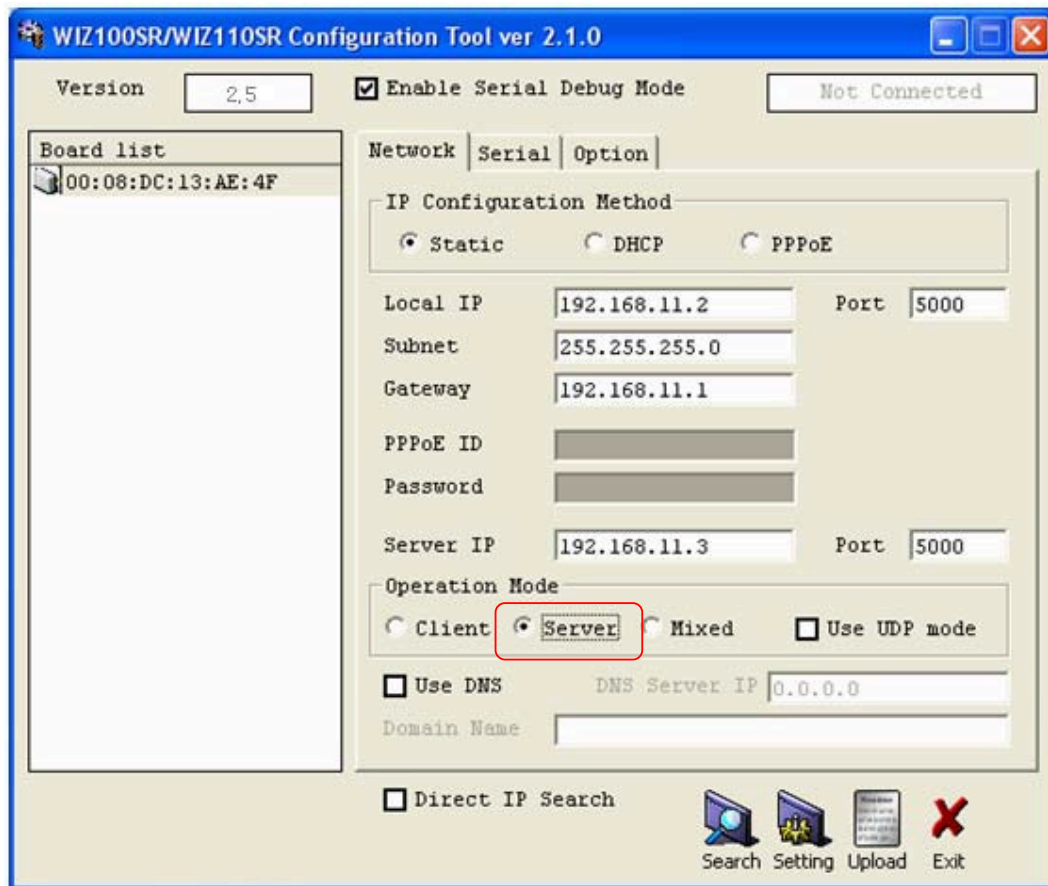


Figure 10. Select Operation mode for Password setting

3. As shown in Figure 9, select Option tab and check 'Enable' combo box of "Password" menu.
4. Input password.
5. Click "Setting" button to apply password setting
6. When the client access this module, client should send 'password' to server module first, and then access will be allowed.

④Serial Configuration:

This function is module setting through serial communication not via network with configuration tool program. When you want to set via serial communication, check "enable". Please detail about serial configuration refers to "4. Serial Configuration".

### 3. Firmware Upload

- ① Run 'WIZ100SR/WIZ110SR Configuration Tool' program, and click "Search" button.
- ② If the module is properly connected to the network, "Searching Complete" message and MAC address will be displayed on the "Board List" as shown in Figure.11.

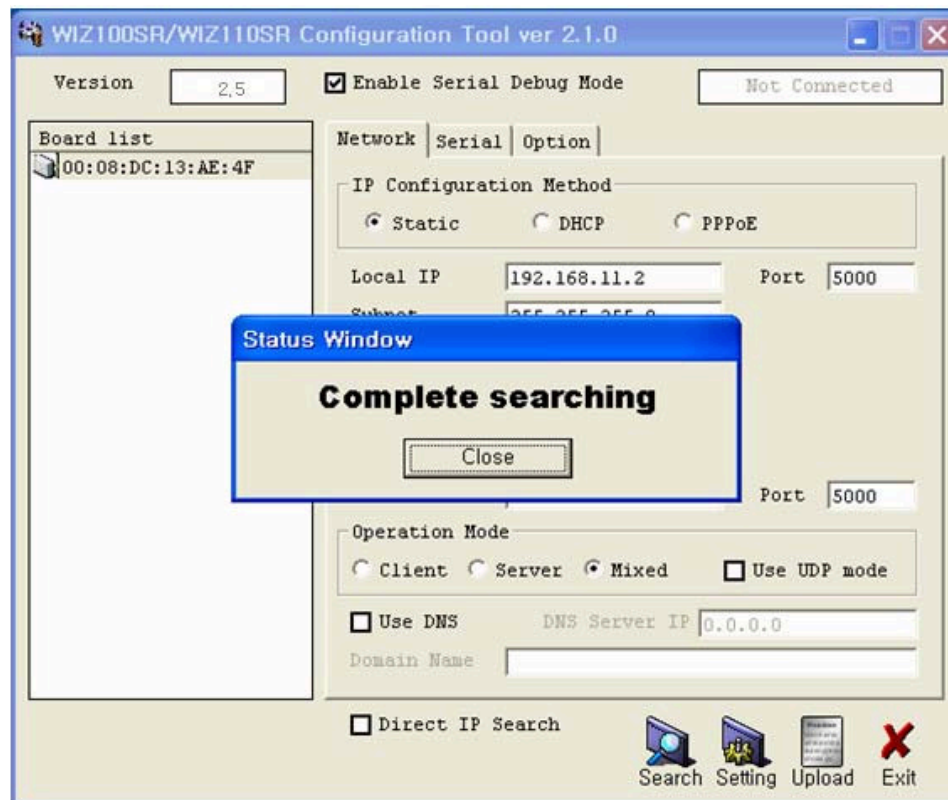


Figure 11. Board Search Window

- ③ Select a module shown in "Board list", and click "Upload" button.
  - Before uploading through Ethernet, you should set the network information of WIZ100SR first by Configuration Tool program as shown above Fig 10. By using Ping test, you can check if network is correctly configured.
- ④ When the window as shown in Figure 12 is displayed, select file for upload and click "Open" button.

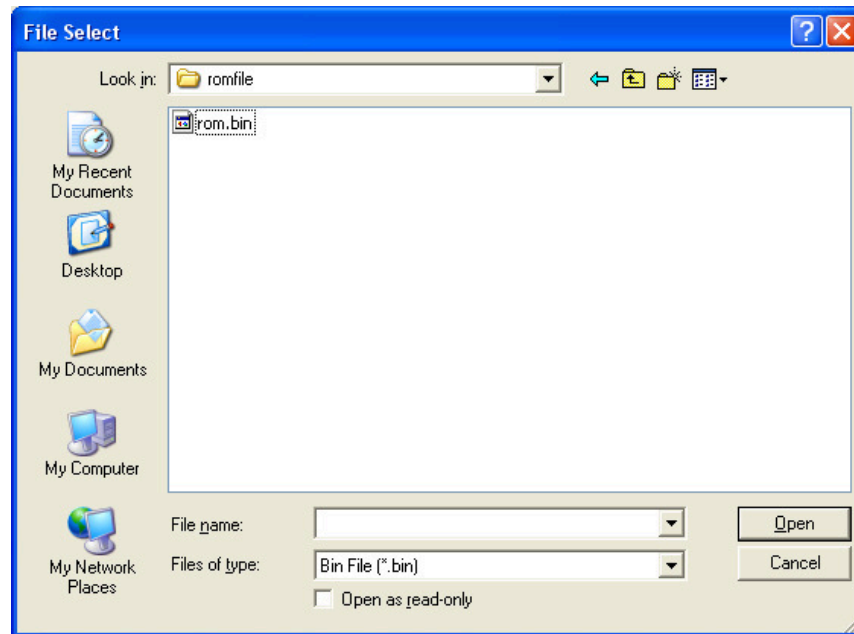


Figure 12. Open dialog box for uploading

Do not upload any other files except for WIZ100SR application firmware file.

⑤ A dialogue box titled “Processing” will be displayed as below.

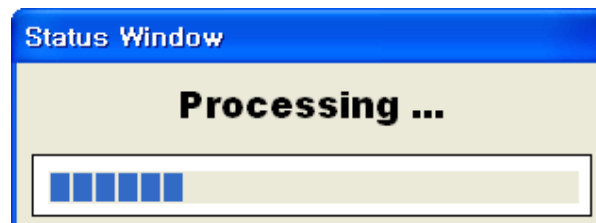


Figure 13. Firmware uploading window

⑥ When uploading is complete, a message box with “Complete Uploading” will be displayed as shown in Figure 14.

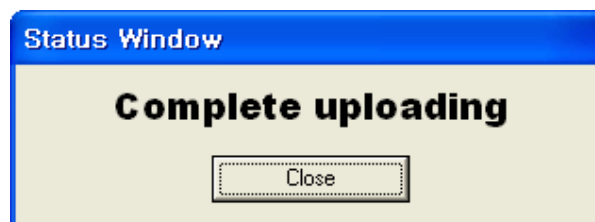


Figure 14. Complete Uploading

## 4. Serial Configuration

### 4-1. Serial Command Format

Serial Command is used to set WIZ110SR parameter. This function is using S/W trigger of WIZ110SR, if input specific letters(three characters), you can start configuration mode.

#### Frame Format

##### Command Frame Format

Descriptor	STX	Command code	Parameter	ETX
Length(bytes)	1	2	Variable	1

Table 4. Serial Command - Command Frame Format

##### Reply Frame format

Descriptor	STX	Reply code	Parameter	ETX
Length(bytes)	1	1	Variable	1

Table 5. Serial Command - Reply Frame Format

#### STX & ETX

Setting	Comments
STX	'<' : Hex = 3Ch
ETX	'>' : Hex = 3Eh

Table 6. Serial Command - STX & ETX

#### Reply Code

Reply	Comments
S	Command was successful
F	Command failed
1	Invalid command
2	Invalid parameter
E	Enter serial command mode

Table 7. Serial Command - Reply Code

#### Command Code

Command	Parameter	Comments
WI	xxx.xxx.xxx.xxx (eg. 192.168.11.133)	Set Local IP
WS	xxx.xxx.xxx.xxx (eg. 255.255.255.0)	Set Subnet mask
WG	xxx.xxx.xxx.xxx (eg. 192.168.11.1)	Set Gateway
WP	0~65535	Set Local IP's port number
WD	0 : Static	Set the IP configuration method

	1 : DHCP	
WM	0 : TCP server 1 : TCP client 2 : UDP	Set the operation mode
WC	0 : startup 1 : any character	TCP client method
WB	XXXX eg. [Baudrate]1: 115200, 2: 57600, 3: 38400, 4: 19200, 5: 9600, 6: 4800, 7: 2400,8: 1200 [data byte] 7 : 7bit, 8bit [parity] 0 : no parity, 1 : Odd, 2 :Even [Flow] 0 : no, 1 : Xon/Xoff, 2 :RTS/CTS	Set the serial baud rate, data, parity and flow control. 4bytes:[Baud][data byte][parity][flow]
WT	0 : Disable 1 : H/W trigger 2 : S/W trigger	Set the serial command method
WU	0 : Disable 1 : Enable	USE DNS use or not.
WE	xxxxxx (eg. In hex format : 2B 2B 2B)	Set the command mode character
WX	xxx.xxx.xxx.xxx (eg. 192.168.11.144)	Set server IP address
WN	0-65535	Set server port number
WR		Restart
WV	xxx.xxx.xxx.xxx (eg. 255.255.255.0)	DNS IP setting
WW	xxxxxxxxxxxxxxxxxxxxxxxxxxxxxxxxxxxx (eg. wiznet.co.kr)	Domain setting
WY	PPPoE ID	PPPoE ID setting
WZ	PPPoE Password	PPPoE Password setting
OC	XX	Set delimiter character in hex
OS	0-255	Set delimiter size
OT	0-65535	Set delimiter time
OI	0-65535	Set Inactivity timer value
Command	Parameter	Comments
RU	0 : Disable 1 : Enable	DNS usage
RV	IP address	DNS IP check
RW	Domain	Domain check
RY	PPPoE ID	PPPoE ID check
RZ	PPPoE Password	PPPoE Password check
RI		Get Local IP
RS		Get Subnet mask
RG		Get Gateway
RP		Get Local IP's port number

RD		Get the IP configuration method
RM		Get the operation mode
RC		Get the TCP client method
RB		Get the serial baud rate
RT		Get the serial command method
RE		Get the command mode character
RF		Get the firmware version
RX		Get the server IP address
RN		Get the server port number
QC		Get delimiter character in hex
QS		Get delimiter size
QT		Get delimiter time
QI		Get Inactivity timer value

Table 8. Serial Command - Command Code

#### 4-2. WIZ110SR Configuration with Serial Command

- ① Check WIZ110SR Firmware Version. If Version is lower, download the latest firmware from download page of <http://www.wiznet.co.kr> , Serial Configuration function is supported firmware version 2.5 or above.

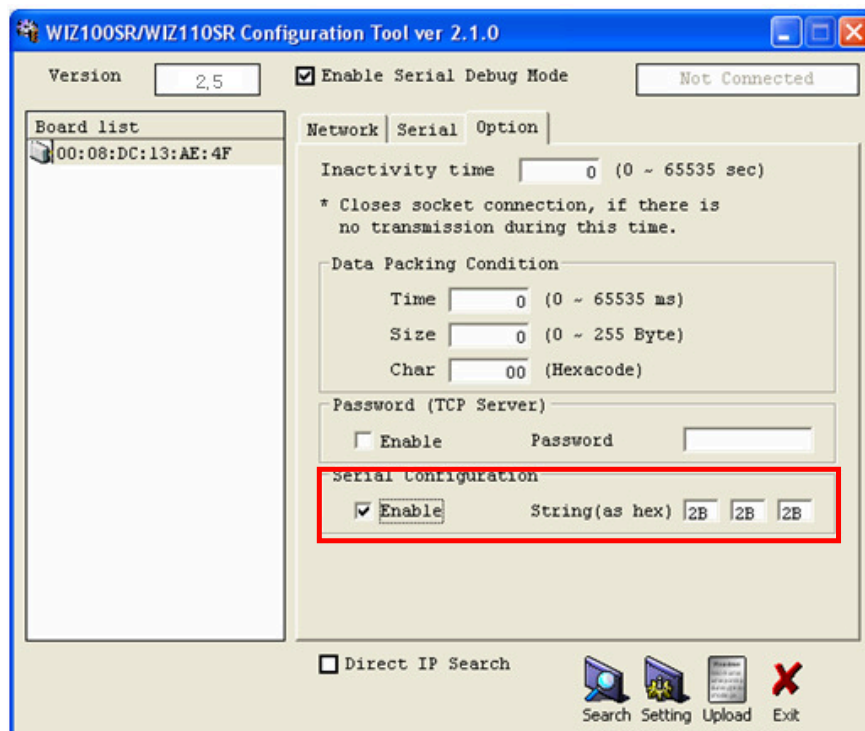


Figure 15. Serial Configuration Enable Setting

- ② Default Serial configuration status of module is 'disable'. So click enable check box of Serial Configuration and click "setting" button.



- ③ Input any three characters for the serial command mode trigger (in above Figure, 2B, 2B, 2B are input)
- ④ If you finish enable setting, you can test as below procedure. This procedure is 'checking module IP and change to other IP address'

1	“+++”input	Enter Serial Configuration mode
2	“<WI192.168.99.124>” input	Change module IP to 192.168.99.124
3	“<S>” Check answer	Notice success IP setting
4	“<RI>” input	check module IP address
5	“<S192.168.99.124>” Check answer	check the changed module IP address
6	“<WR>” input	reboot
7	“<S>” check answer	Notice success of reboot command
8	Module reboot	

**Table 9. Serial Command Testing Procedure**

Above procedure is shown in serial console as below figure.

```

<S><S192.168.99.124><S>
WIZ100SR/WIZ110SR Ver. 01.02
MAC ADDRESS      : 00.08.DC.13.AE.4F
SUBNET MASK      : 255.255.255.0
G/W IP ADDRESS   : 192.168.99.1
LOCAL IP ADDRESS : 192.168.99.124
  
```

**Figure 16. Serial Command**

## 5. PIN Assignment and Dimension

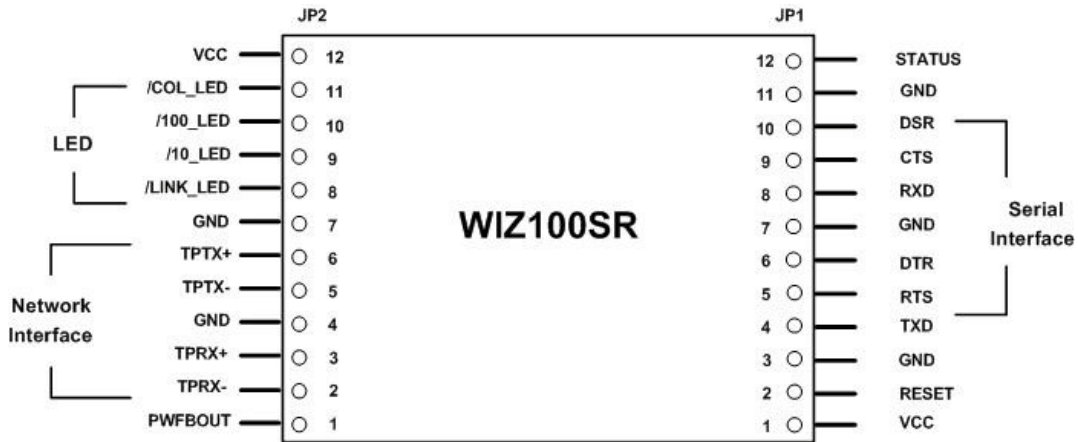


Figure 17. WIZ100SR Pin Assignment

PIN NAME	Functions	I/O	
RESET	Reset (Active High)	Input	
TXD	RS-232 Data Output	Output	
RTS	RS-232 Request To Send	Output	Optional
DTR	RS-232 Data Terminal Ready	Output	Optional
RXD	RS-232 Data Input	Input	
CTS	RS-232 Clear To Send	Input	Optional
DSR	RS-232 Data Set Ready	Input	Optional
TPRX-	Ethernet Differential Input-	Input	
TPRX+	Ethernet Differential Input+	Input	
TPTX-	Ethernet Differential Output-	Output	
TPTX+	Ethernet Differential Output+	Output	
/LINK_LED	Link LED	Output	
/10_LED	10 Mbps LED	Output	
/100_LED	100 Mbps LED	Output	

/COL_LED	Collision LED	Output	
Status	High: Not connected Low: Connected	Output	
PWFBOU	Power Feedback Out	Output	
VCC	3.3V Power	Power	

Table 10 WIZ100SR PIN Functions

- 1) All signal level is 3.3V LVTTTL.
- 2) A high on RESET pin about minimum 1.2 usec must be applied for proper operation.
- 3) 'Connected' of Status pin means the TCP socket of WIZ100SR is connected to remote system.
- 4) /LINK\_LED pin is used to check if Ethernet cable is physically connected or not.

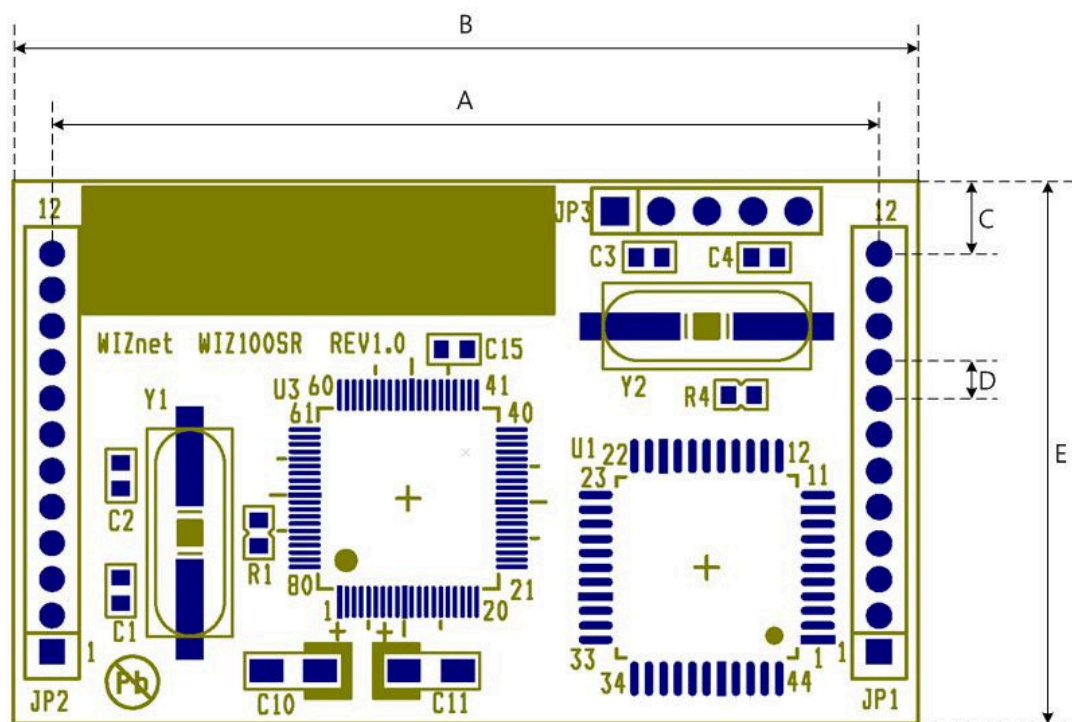


Figure 18. WIZ100SR Dimension

Symbol	Dimension(mm)
A	45.7
B	50.0

C	4.0
D	2.0
E	30.0

Table 11 WIZ100SR Dimension

## 6. Demonstration and Test

In this chapter, we give an example that can be used to test the function of WIZ100SR.

The testing environment is as follows;

### Hardware

- ◆ PC that has an RS-232 serial port.
- ◆ EG-SR-7100A+ & EG-SR-7100A Test B/D Rev2.0 (For the EG-SR-7100A+ testing, use the test board version 2.0 or above.)
- ◆ Ethernet cross-over cable to connect PC's and EG-SR-7100A+'s LAN ports.
- ◆ RS-232 cable to connect PC's COM port with EG-SR-7100A+'s serial data port.

### Software

- ◆ Windows operating system installed on testing PC.
- ◆ EG-SR-7100A Configuration tool (For the DNS function, use Configuration Tool ver 3.2.0 or above)
- ◆ Hyper terminal

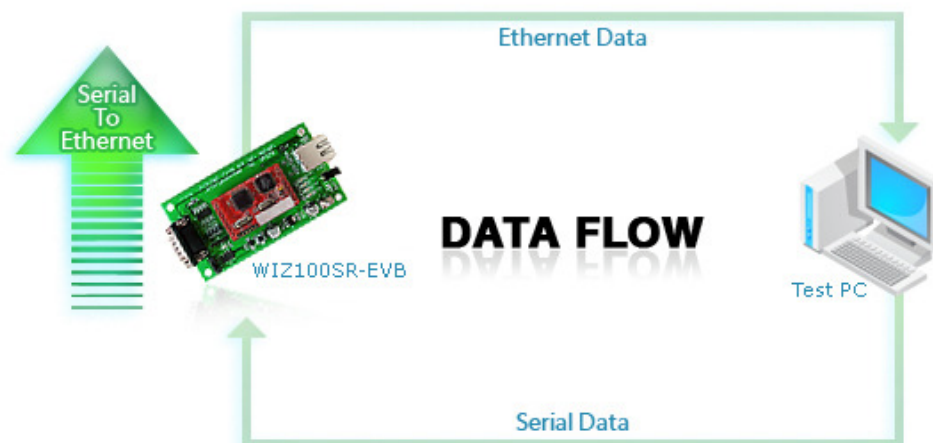


Figure 19. Data Flow (Serial -> Ethernet)

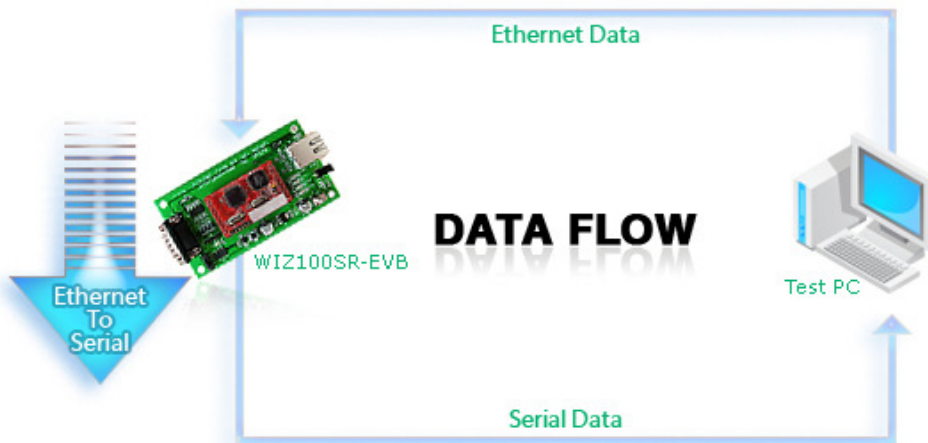


Figure 20. Data Flow (Ethernet -> Serial)

### STEP1.

- ① Make sure the position of the mode switch is normal mode. (If JP4 of the test board is configured as Config mode, the network function is disabled, and the Configuration Tool can not be used.)
- ② Connect the computer and WIZ100SR Test Board by using RS-232.
- ③ Connect the computer and WIZ100SR Test Board by Ethernet cable (Direct or Crossover Cable).
- ④ Power on the WIZ100SR Test Board.

### STEP2. (WIZ100SR Environment Setup)

- ① Modules are searched by click search button of the Configuration Tool.
- ② Select the board to be configured and change the value. To apply the changed value, click Setting button.
- ③ If changed value is successfully applied, the “Complete setting” message is displayed as shown in Figure 21.

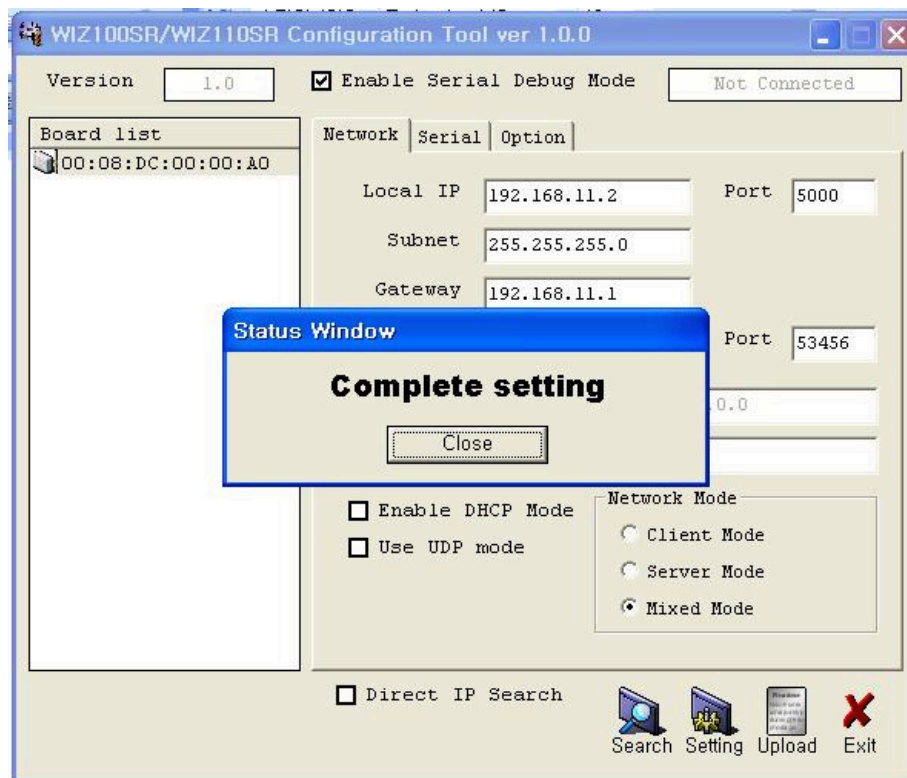
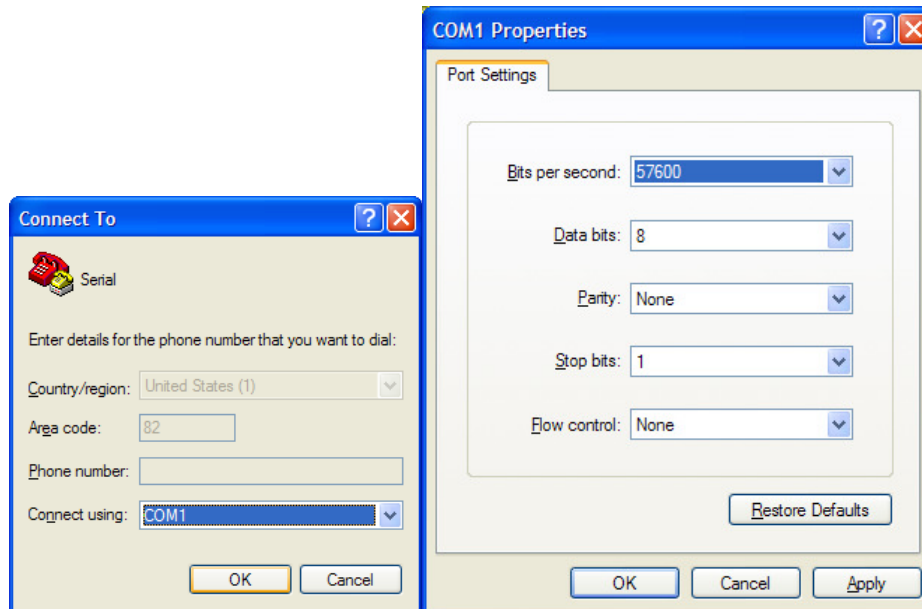


Figure 21. Result Window after Running “Setting”

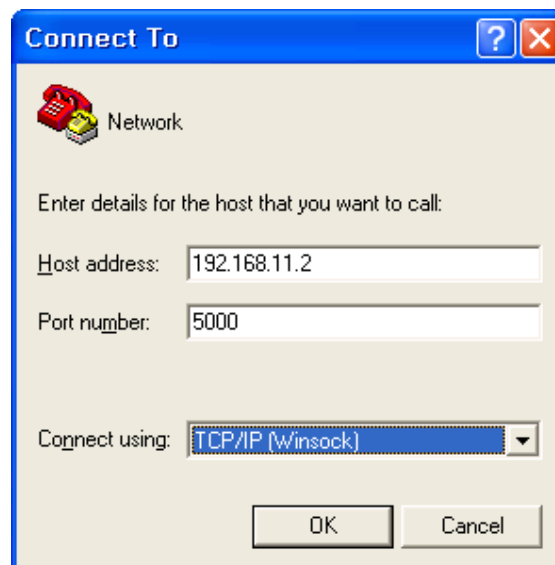
### STEP3. (Data Transmission)

- ① Run terminal emulator program (e.g. Hyper terminal) on Test PC.
- ② Set the baud rate as the same value of WIZ100SR



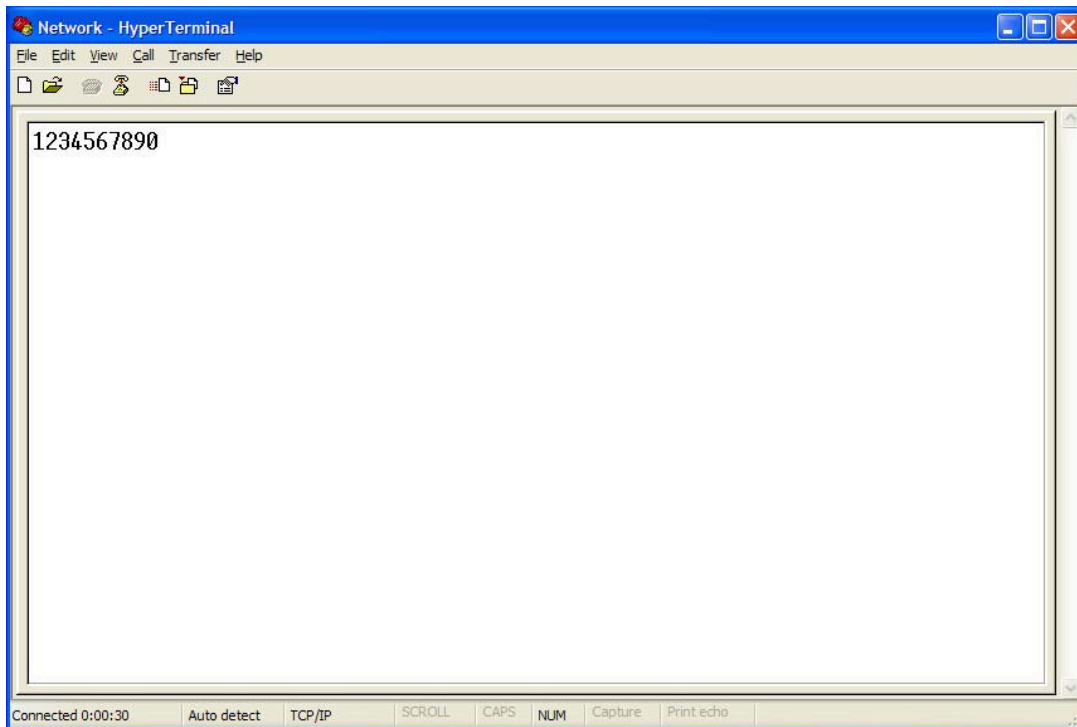
**Figure 22. Serial Terminal Program Configuration**

- ③ Execute another Hyper terminal and set the IP address and port number.



**Figure 23. Network Terminal Program Configuration**

- ④ Type some character on the serial Hyper terminal screen. In this example, “01234567890” is entered.
- ⑤ Make sure this data is shown on the Network Hyper terminal window. (Serial to Ethernet)

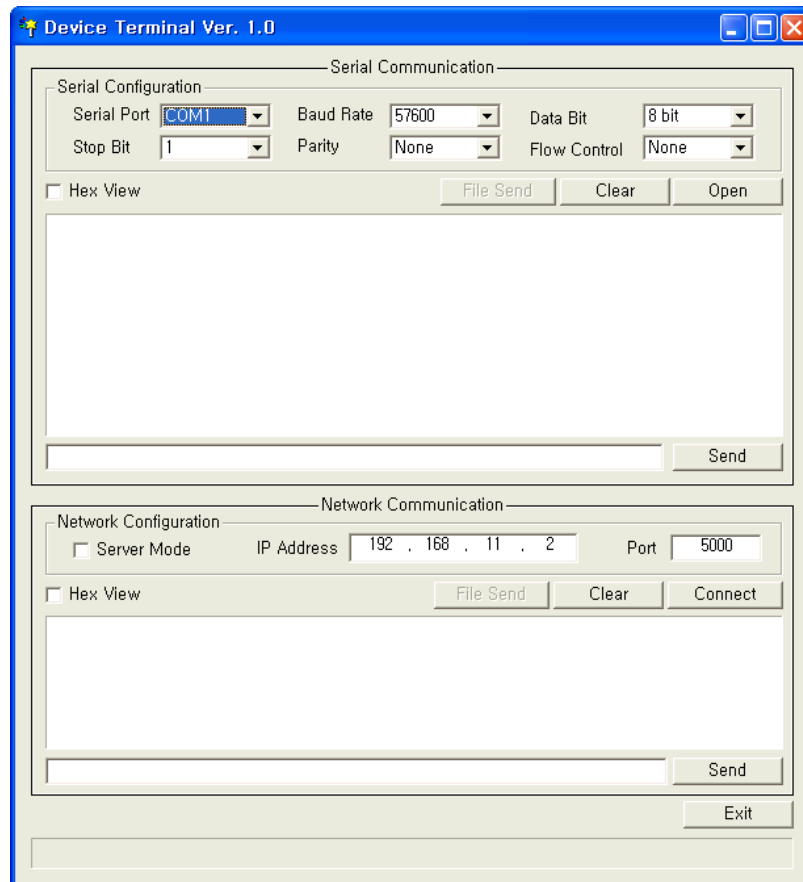


**Figure 24. Received Data by Network Terminal Program**

- ⑥ As the same way, type some characters on the network Hyper terminal, and then make sure these data are shown in the serial Hyper terminal window. (Ethernet to Serial)

\* Above test can be performed more easily and conveniently by using Device Terminal program. Below is the screen of the Device Terminal program.





**Figure 25. Device Terminal Program**

Device Terminal is the program into which serial and network terminals integrated for more efficient testing of WIZnet gateway modules.

As shown in Figure 25, at the upper part of the program, you configure serial setting of WIZ100SR. By click “Open” button, serial communication is available.

At the Network Terminal, the lower part of the program, it is possible to test both of TCP Client and TCP Server modes. If Server Mode is checked, Device Terminal will operate as server mode, and the WIZ100SR module will work as client mode. The PC where the Device Terminal is operating will work as a server, the IP address of the PC should be set as Server IP of the module. If Server mode is not checked, Device Terminal will operate as client mode, and the module as server. For the IP address and port, input IP address and port number of WIZ100SR and click “Connect” button for network communication.

When serial and network terminals are connected, input any character at the Data Input window and click “Send” button. You can check the data transferred to another window.

## 6. Reference Schematic

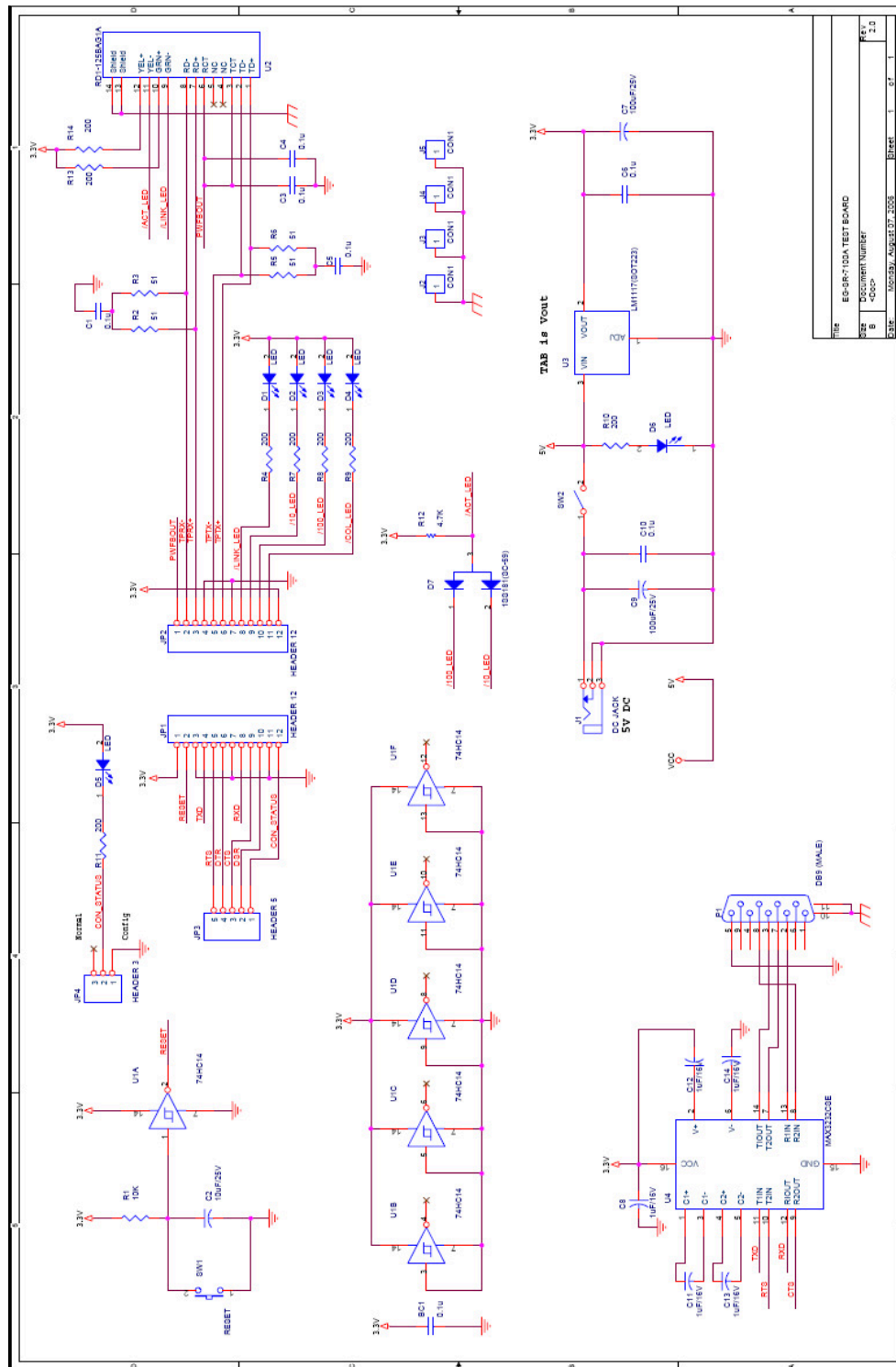


Figure 26. Schemati



Компания «ЭлектроПласт» предлагает заключение долгосрочных отношений при поставках импортных электронных компонентов на взаимовыгодных условиях!

Наши преимущества:

- Оперативные поставки широкого спектра электронных компонентов отечественного и импортного производства напрямую от производителей и с крупнейших мировых складов;
- Поставка более 17-ти миллионов наименований электронных компонентов;
- Поставка сложных, дефицитных, либо снятых с производства позиций;
- Оперативные сроки поставки под заказ (от 5 рабочих дней);
- Экспресс доставка в любую точку России;
- Техническая поддержка проекта, помощь в подборе аналогов, поставка прототипов;
- Система менеджмента качества сертифицирована по Международному стандарту ISO 9001;
- Лицензия ФСБ на осуществление работ с использованием сведений, составляющих государственную тайну;
- Поставка специализированных компонентов (Xilinx, Altera, Analog Devices, Intersil, Interpoint, Microsemi, Aeroflex, Peregrine, Syfer, Eurofarad, Texas Instrument, Miteq, Cobham, E2V, MA-COM, Hittite, Mini-Circuits, General Dynamics и др.);

Помимо этого, одним из направлений компании «ЭлектроПласт» является направление «Источники питания». Мы предлагаем Вам помощь Конструкторского отдела:

- Подбор оптимального решения, техническое обоснование при выборе компонента;
- Подбор аналогов;
- Консультации по применению компонента;
- Поставка образцов и прототипов;
- Техническая поддержка проекта;
- Защита от снятия компонента с производства.



#### Как с нами связаться

**Телефон:** 8 (812) 309 58 32 (многоканальный)

**Факс:** 8 (812) 320-02-42

**Электронная почта:** [org@eplast1.ru](mailto:org@eplast1.ru)

**Адрес:** 198099, г. Санкт-Петербург, ул. Калинина, дом 2, корпус 4, литера А.