

**μPG2185T6R-EVAL-A**

**Evaluation Board**

- Description
- Insertion Loss of Through Board
- Performance Data Plots
- Assembly Drawing

## **Description:**

The uPG2185T6R-EVAL-A evaluation board provides a quick and convenient means of evaluating the performance of the NEC uPG2185T6R switch. In addition to the device, the board provides DC block capacitors, power supply bypass capacitors, and RF and DC connectors.

A DC block capacitor is required at all RF ports. On this board, a 6pF capacitor is used for this purpose. The chosen capacitance value minimizes the mismatch effect associated with the serial capacitor over a relatively wide frequency range (2 to 6GHz). For a narrow band application or an application where the operating frequency is outside the specific frequency range, the user may select a different capacitance value. Generally the performance of the switch circuit is not sensitive, to a certain extent, to the value of DC block capacitors.

A 1000pF capacitor is used for DC bypass on all control lines. For high speed applications the user may choose smaller capacitance or no capacitor at all.

### **DC supply connectors:**

P1 is control voltage  $V_{cont1}$ , P2 is  $V_{cont2}$  and pins P3 and P4 are the ground.  $V_{cont1}$  and  $V_{cont2}$  should be connected to separate power supplies to provide the required control logic.

### **RF connectors:**

As indicated on the board, J1 is connected to the OUTPUT1 port, J2 is connected to the OUTPUT2 port and J3 is connected to the INPUT port.

### **Information on Board Material:**

The board material is 20 mil thick Duroid 6002. Its dielectric constant is 2.94.

### **Switch Logic Table:**

The following table lists the logic table for switch states.

<b>Vcont1</b>	<b>Vcont2</b>	<b>INPUT – OUTPUT1</b>	<b>INPUT – OUTPUT2</b>
H	L	OFF	ON
L	H	ON	OFF

### **Insertion Loss of Through Board:**

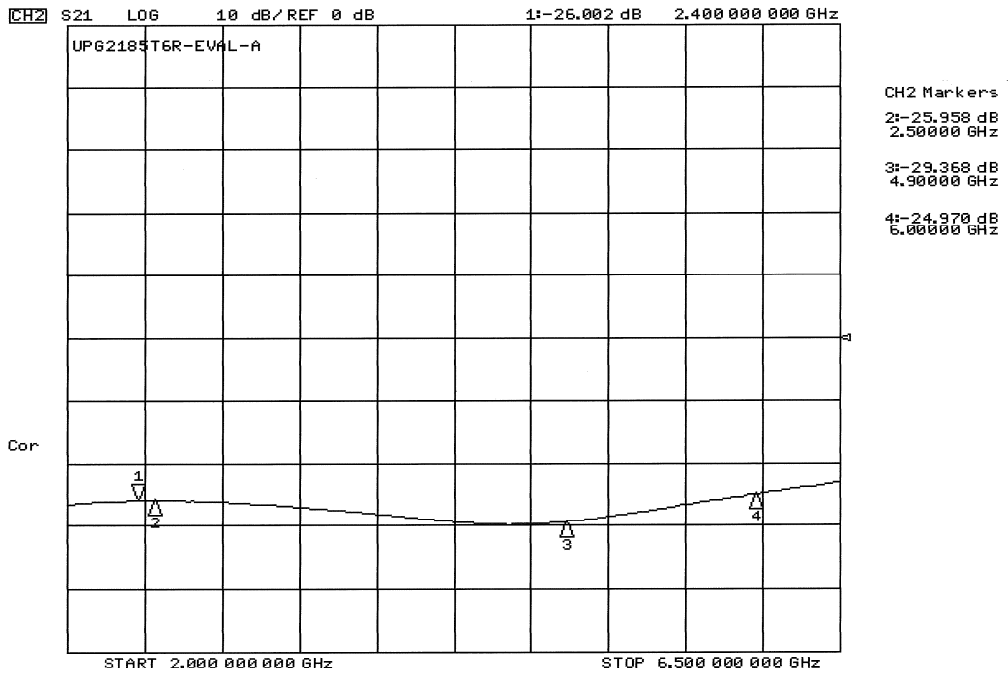
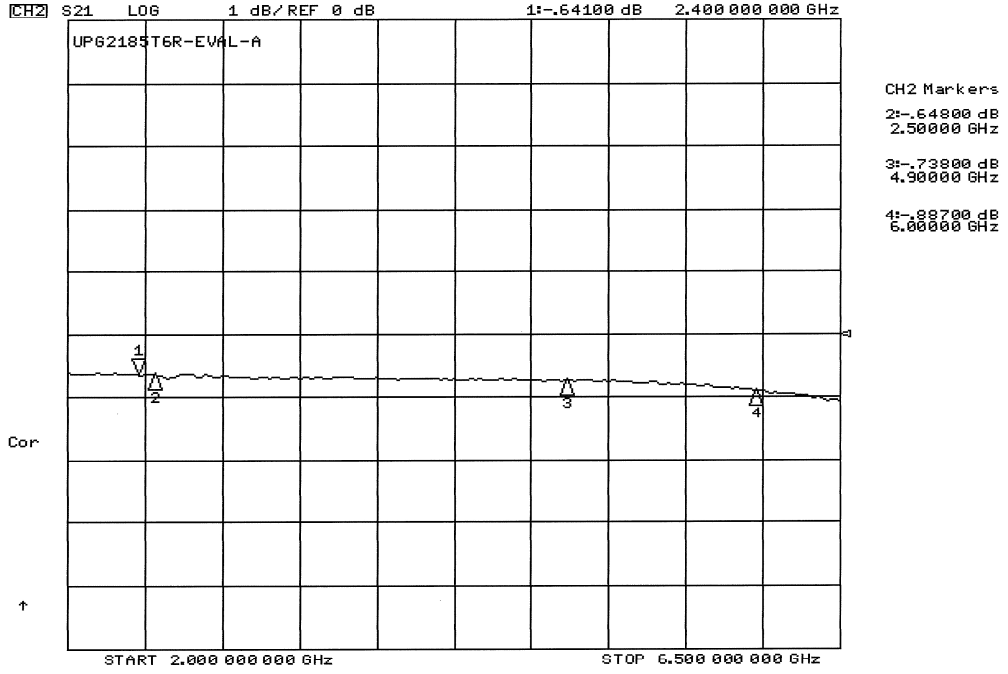
The insertion loss plot shown below is from direct measurement on an evaluation board. It is necessary to take the loss through the connectors and PCB trace into account in assessing the insertion loss through the switch alone. To this end a through board was characterized to determine the board/connector loss. The table below lists the board loss at different frequencies.

<b>INPUT FREQUENCY (GHz)</b>	<b>BOARD LOSS (dB)</b>
2.4	0.14
2.5	0.15
4.9	0.20
6.0	0.26

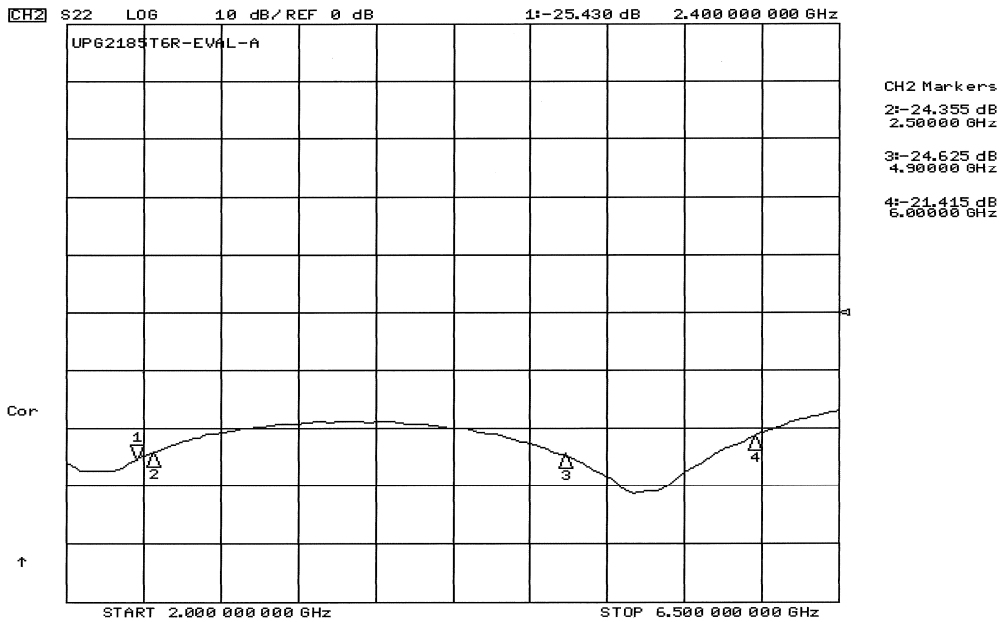
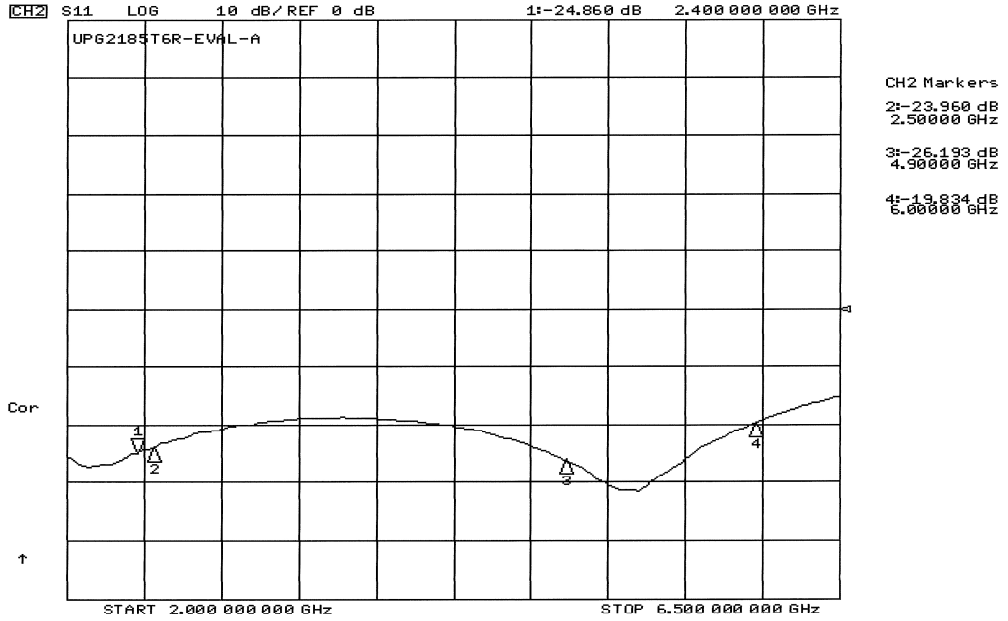
### **Performance Plots:**

The following plots show typical data on insertion loss, isolation and return losses for the condition of INPUT to OUTPUT1 path being ON. The data for condition of INPUT to OUTPUT2 being ON is similar.

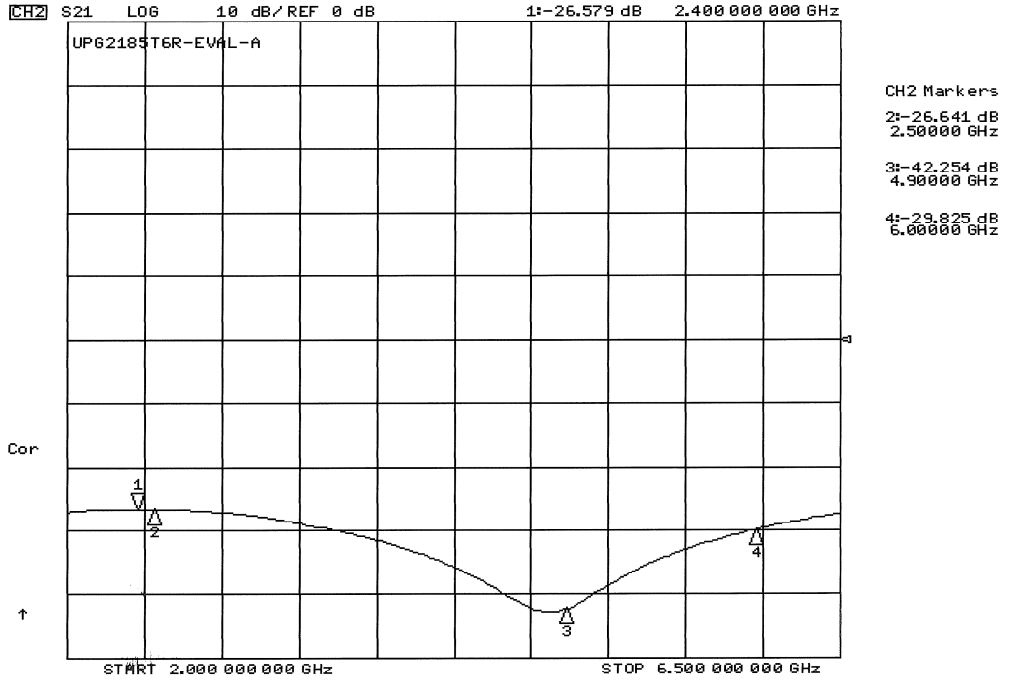
# Insertion Loss and Isolation (Input-Output)



# Input and Output Return Loss (Input-Output1)

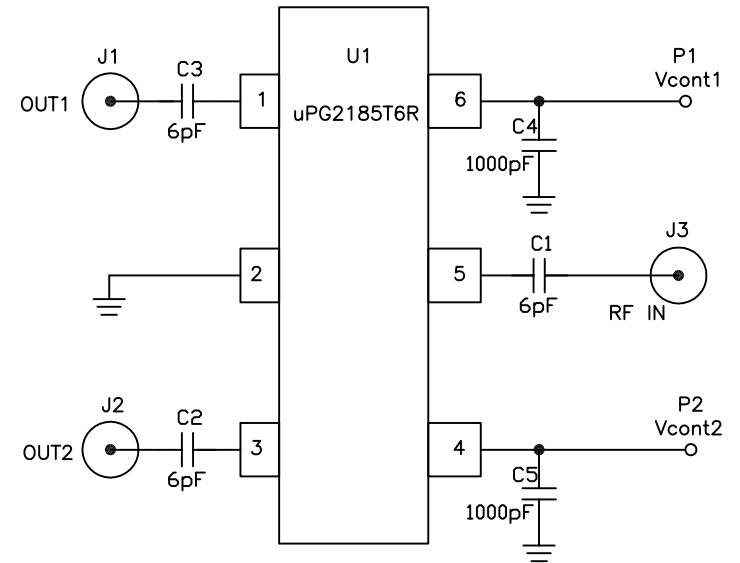
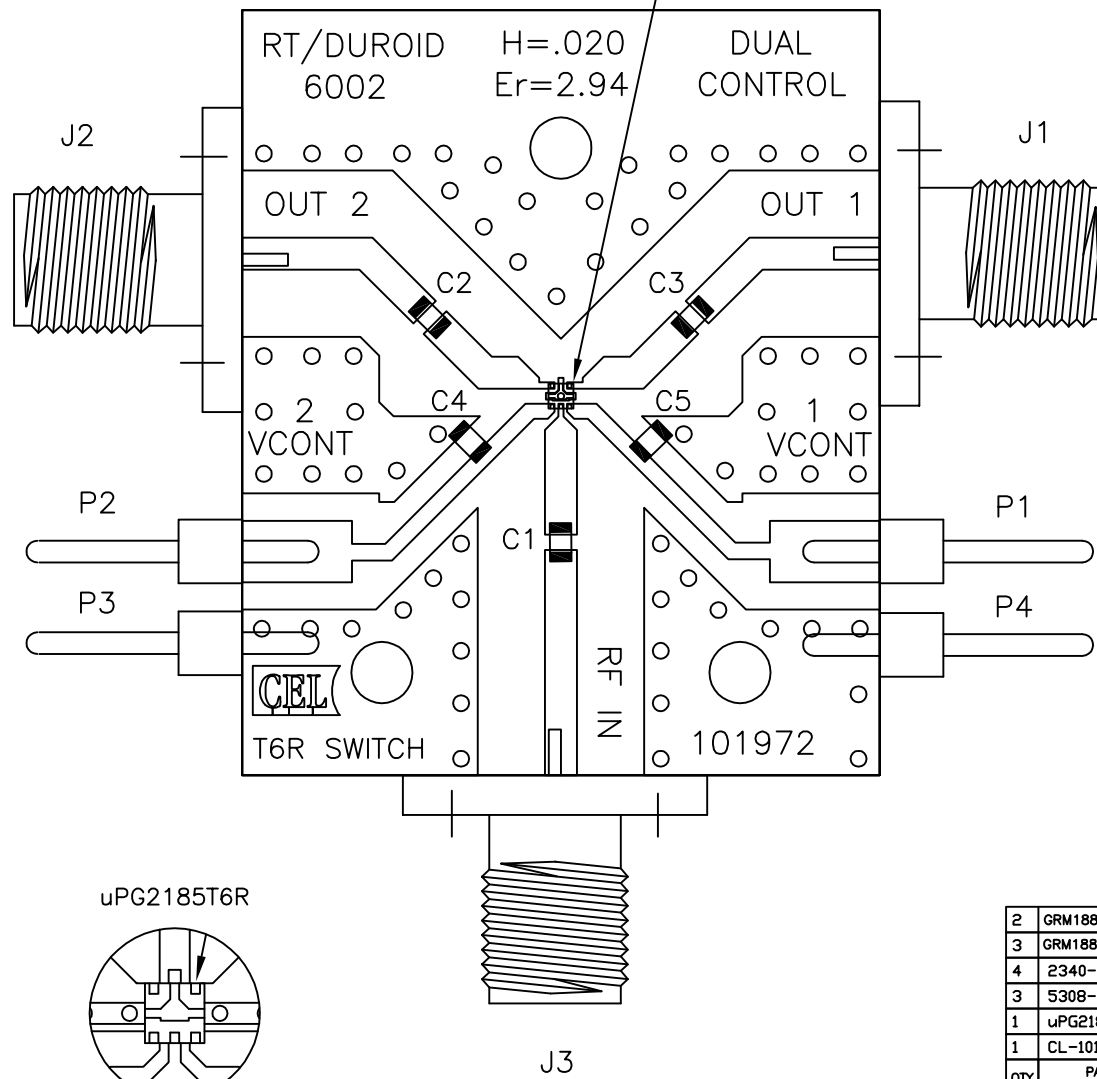


# Isolation (Output1-Output2)

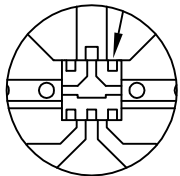


REVISIONS				
ZONE	LTR	DESCRIPTION	DATE	APPROVED

MARKING FOR PIN 1



uPG2185T6R



MARKING FOR PIN1 IS ON TOP OF CHIP

PACKAGE MARKING: G6

2	GRM1885C1H102JA01D	C4,C5	0603 1000pF CAP MURATA	6
3	GRM1885C1H6R0DZ01D	C1,C2,C3	0603 6pF CAP MURATA	5
4	2340-6111 TG	P1,P2,P3,P4	PIN HEADER 3M	4
3	5308-2CC	J1,J2,J3	SMA FEMALE CONNECTOR TENSOLITE	3
1	uPG2185T6R	U1	IC NEC uPG2185T6R GoAs Switch	2
1	CL-101972	DRAWING	COMPONENT LAYOUT DRAWING	1
QTY	PART OR IDENTIFYING NO.	NOMENCLATURE OR DESCRIPTION	MATERIAL/SPECIFICATION	ITEM NO.

PARTS LIST

UNLESS OTHERWISE SPECIFIED DIMENSIONS ARE IN INCHES		APPROVALS		CEL CALIFORNIA EASTERN LABS 4590 PATRICK HENRY DR. SANTA CLARA CA. 95054	
DECIMALS	TOLERANCES	Drawing by:	03/27/2008	TITLE: UPG2185T6R-EVAL-A ASSEMBLY DRAWING	
.XX± .XXTOL	ANGULAR ± ANGLE	Designed by:	03/27/2008		
.XXX± .XXXTOL	DO NOT SCALE DRAWING	Checked by:			
MATERIAL	MATL1STL	Project Engineer:		SIZE	FSCM NO.
	MATL2NDL	Quality Control:		C	
FINISH	FINISH			DWG NO. AD101972	
NEXT ASSY	USED ON			REVISIONS	
APPLICATION				SCALE	RELEASE DATE
					REDATE
					SHEET SHNO OF NOSH



Компания «ЭлектроПласт» предлагает заключение долгосрочных отношений при поставках импортных электронных компонентов на взаимовыгодных условиях!

Наши преимущества:

- Оперативные поставки широкого спектра электронных компонентов отечественного и импортного производства напрямую от производителей и с крупнейших мировых складов;
- Поставка более 17-ти миллионов наименований электронных компонентов;
- Поставка сложных, дефицитных, либо снятых с производства позиций;
- Оперативные сроки поставки под заказ (от 5 рабочих дней);
- Экспресс доставка в любую точку России;
- Техническая поддержка проекта, помощь в подборе аналогов, поставка прототипов;
- Система менеджмента качества сертифицирована по Международному стандарту ISO 9001;
- Лицензия ФСБ на осуществление работ с использованием сведений, составляющих государственную тайну;
- Поставка специализированных компонентов (Xilinx, Altera, Analog Devices, Intersil, Interpoint, Microsemi, Aeroflex, Peregrine, Syfer, Eurofarad, Texas Instrument, Miteq, Cobham, E2V, MA-COM, Hittite, Mini-Circuits, General Dynamics и др.);

Помимо этого, одним из направлений компании «ЭлектроПласт» является направление «Источники питания». Мы предлагаем Вам помощь Конструкторского отдела:

- Подбор оптимального решения, техническое обоснование при выборе компонента;
- Подбор аналогов;
- Консультации по применению компонента;
- Поставка образцов и прототипов;
- Техническая поддержка проекта;
- Защита от снятия компонента с производства.



#### Как с нами связаться

**Телефон:** 8 (812) 309 58 32 (многоканальный)

**Факс:** 8 (812) 320-02-42

**Электронная почта:** [org@eplast1.ru](mailto:org@eplast1.ru)

**Адрес:** 198099, г. Санкт-Петербург, ул. Калинина, дом 2, корпус 4, литера А.