

5 POLE MID POWER **SPEC Pak**[®]

Sealed Power For Environmental Connections



3 Phase AC Power Distribution | Motors & Controls | Industrial Equipment
60 Amps | Compact Sealed Connector | IP68



APP[®]
Anderson Power Products[®]

An **IDEAL** Company

| Electrical | | |
|-------------------------------------|----------------|------------|
| Current Rating (Amperes) | UL 1977 | CSA |
| 10 AWG | 45 | 30 |
| 8 AWG | 60 | 40 |
| Voltage Rating | | |
| UL 1977 (AC/DC) | 600 | |
| Grounding | | |
| UL 2238, Sec 37.8 | Pass | |
| Contact Resistance (average) | .300 Milliohms | |

| Materials | |
|---|--------------------|
| Shell, Housing & Sealing Nut | PC/PBT |
| Contact Holders | PBT- GF |
| Contact Retention Clip | Be-Cu |
| Latch | Stainless Steel |
| Flammability | UL 94 V-0 |
| Weatherability | UL 746C F1 |
| Sockets | Copper |
| SC08-GH | Ag plating over Ni |
| SC08-SN | Ag plating over Ni |
| Pins | Copper |
| PP08SGH | Ag plating over Ni |
| PC08SSN | Ag plating over Ni |

| Mechanical | |
|--------------------------------------|---|
| Environmental Seal | |
| IEC 60529 | IP 68 |
| UL 50E | Pass |
| Wire Size | 10 to 8 AWG 6.0 to 8.4 mm ² |
| Operating Temperature | |
| UL 1977 | -40 to 105°C -40 to 221°F |
| Mating Cycles (no load) | 250 min |
| Mating Force (nominal) | 28 lbf 125 N |
| Unmating Force | 12 lbf 53 N |
| Contact Retention Force (min) | 50 lbf 222 N |
| Touch Safe (IEC 60529) | IP 20 (socket side only) |

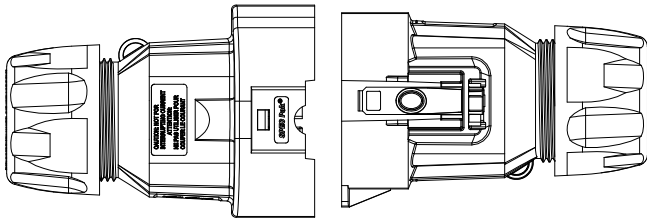


Silver = Ag Gold = Au Nickel = Ni

ORDERING INFORMATION

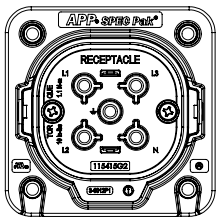
SPEC Pak® is a highly configurable environmentally sealed connector. For convenience, follow the steps below to determine component part numbers.

Step 1: Select Shell



SK1-076D05
Inline Receptacle

SK6-076D05
Plug

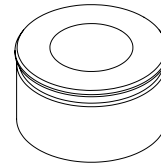


SK2-076D05
Panel Mount Receptacle & Gasket

| Description | - Part Numbers - |
|-------------------------|------------------|
| Minimum Quantity | 25 |
| Inline Receptacle Shell | SK1-076D05 |
| Plug Shell | SK6-076D05 |
| Panel Mount Receptacle | SK2-076D05 |
| Receptacle Cover | SK9-076 |
| Plug Cover | SK9P-076 |

Contact holders are available with multiple keys, please inquire.

Step 2: Select Sealing Gland



* Define:

| | Number of Wires | Wire OD |
|------------|-----------------|---------|
| Wires | | |
| - Discrete | _____ | _____ |
| - Bundled | _____ | _____ |

* Select wire protection that will accommodate the number of wires and outer diameter (OD) of the wire used in your application.

* Wire protection is required for use with inline receptacles (SK1-076D0) and plugs (SK6-076D05) to obtain IP68 seal.

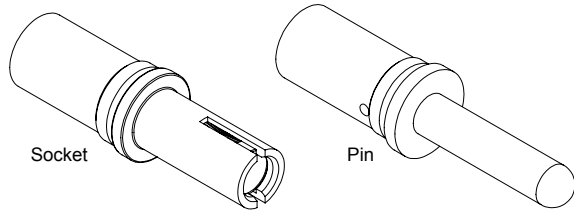
| Number of Holes | Cable Range Wire Outer Diameter mm (in) | Sealing Grommet Only - Part Numbers - |
|------------------------|---|---------------------------------------|
| Minimum Quantity | | 10 |
| 1 | 18.0 - 24.0 mm (0.79" - 0.85") | B02130P7 |

Other sealing grommets available, please inquire.

Torque Requirements

Hand tighten. Using a 44 mm wrench or strap wrench, tighten an additional 3/4—1 turn.

Step 3: Select Contacts



* Define:

Contacts

| | | |
|---------|---------------------------|-------------------|
| | <u>Number of Circuits</u> | <u>Wire Gauge</u> |
| - Power | _____ | _____ |
| - Other | _____ | _____ |

Amps (continuous): ____ Max amps at ____ volts

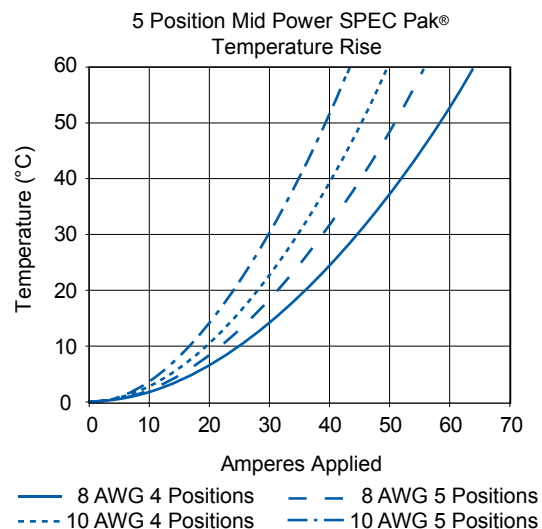
* Select power and/or ground contacts appropriate for your wire size (AWG or mm²).

• Sockets are used in the receptacles
(part numbers SK1-076D05 & SK2-076D05)

• Pins are used in the plug
(part number SK6-076D05)

| Description | - Part Numbers - |
|--|------------------|
| Minimum Quantity | 10 |
| Power Drawer® #8 socket crimp, first-mate | SC08-GH |
| Power Drawer® #8 socket crimp, standard mate | SC08-SN |
| Power Drawer® #8 plug crimp, first-mate | PP08SGH |
| Power Drawer® #8 plug crimp, standard mate | PC08SSN |

| TEMPERATURE CHART |



| TOOLING |

| Wire Size | | Part Number | Description | Crimp Tools | | | | | |
|-----------|-----------------|---------------|--|----------------------|--------|---------|-------------------|-------------|-------------|
| AWG | MM ² | Power Contact | | Pneumatic Bench Tool | Die | Locator | Daniels Mfg Tool* | | |
| | | | | + | + | OR | Tool | Die | Locator |
| #8/10 | 8.4/6.0 | SC08-GH | POWER DRAWER CONT.#8 SOC.CRIMP, FIRST MATE | 1387G1 | 1388G6 | 1389G19 | M22520/23-01 | M22520/23-2 | M22520/23-9 |
| #8/10 | 8.4/6.0 | SC08-SN | POWER DRAWER CONT.#8 SOC.CRIMP, STD.MATE | | | | M22520/23-01 | M22520/23-2 | M22520/23-9 |
| #8/10 | 8.4/6.0 | PP08SGH | POWER DRAWER CONT.#8 PIN,CRIMP, STD.MATE, FIRST MATE | | | | M22520/23-01 | M22520/23-2 | M22520/23-9 |
| #8/10 | 8.4/6.0 | PC08SSN | POWER DRAWER CONT.#8 PIN,CRIMP, STD.MATE | | | | M22520/23-01 | M22520/23-2 | M22520/23-9 |

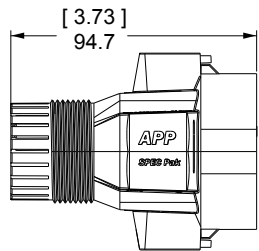
* Must contact Daniels directly for this tooling option, www.dmctools.com.



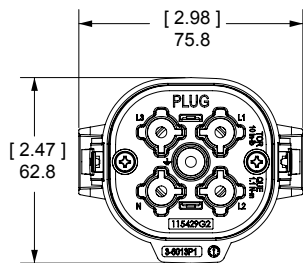
Dimensions

| PLUG MID POWER |

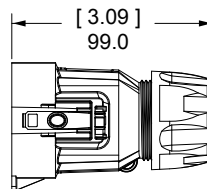
Top View



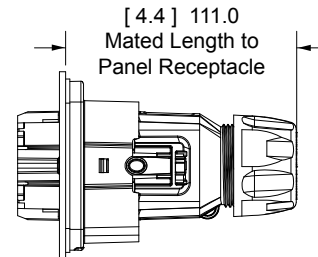
Front View



Side View

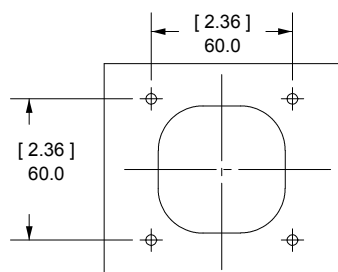


Mated View

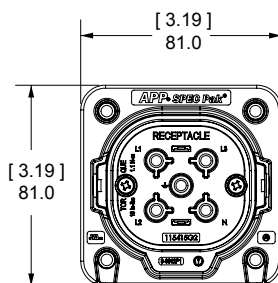


| PANEL MOUNT RECEPTACLE MID-POWER |

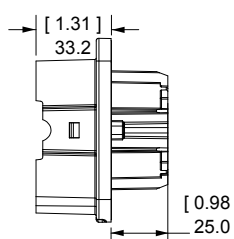
Panel Cut Out



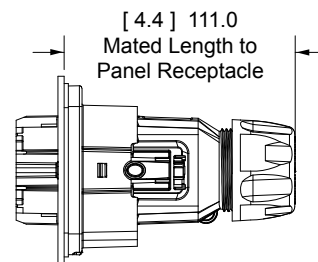
Front View



Side View

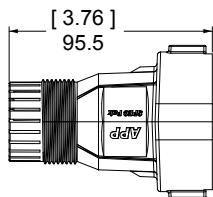


Mated View

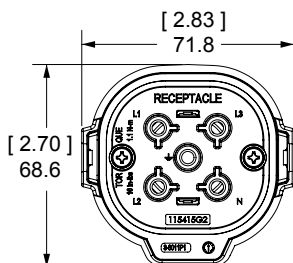


| INLINE RECEPTACLE MID-POWER |

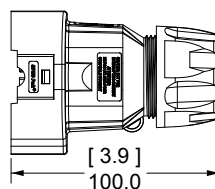
Top View



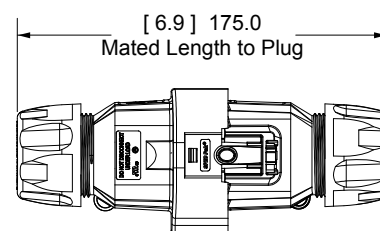
Front View



Side View

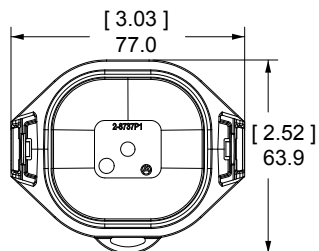


Mated View



| PLUG COVER KIT |

Front View

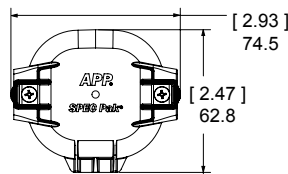


Side View

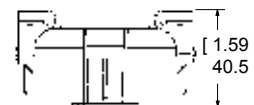


| RECEPTACLE COVER KIT |

Front View



Side View



DS-MPSPAK5P REV 0

All Data Subject To Change Without Notice

© 2016 Anderson Power Products, Inc. All rights reserved. SPEC Pak®, Power Drawer®, APP®, Anderson Power Products® and the APP logo are registered trademarks of Anderson Power Products, Inc.™.

HEADQUARTERS: Anderson Power Products®, 13 Pratts Junction Road, Sterling, MA 01564-2305 USA T:978-422-3600 F:978-422-0128 • **EUROPE:** Anderson Power Products® Ltd., Unit 3, Europa Court, Europa Boulevard, Westbrook, Warrington, Cheshire, WA5 7TN United Kingdom T: +44 (0) 1925 428390 F: +44 (0) 1925 520203 • **ASIA / PACIFIC:** IDEAL Anderson Asia Pacific Ltd., Unit 922-928 Topsail Plaza, 11 On Sum Street, Shatin N.T., Hong Kong T: +(852) 2636 0836 F: +(852) 2635 9036 • **CHINA:** IDEAL Anderson Technologies (Shenzhen) Ltd., Block A8 Tantou Western Industrial Park, Songgang Baoan District, Shenzhen, PR. China 518105 T: +(86) 755 2768 2118 F: +(86) 755 2768 2218 • **TAIWAN:** IDEAL Anderson Asia Pacific Ltd., Taiwan Branch, 4F.-2, No.116, Dadun 20th St., Situn District, Taichung City 407, Taiwan (R.O.C.) T: +(886) 4 2310 6451 F: +(886) 4 2310 6460 • www.andersonpower.com

Mouser Electronics

Authorized Distributor

Click to View Pricing, Inventory, Delivery & Lifecycle Information:

[Anderson Power Products:](#)

[PP08SGH](#) [SK2-076D05](#) [SC08-GH](#) [SK1-076D05](#) [SK6-076D05](#)



Компания «ЭлектроПласт» предлагает заключение долгосрочных отношений при поставках импортных электронных компонентов на взаимовыгодных условиях!

Наши преимущества:

- Оперативные поставки широкого спектра электронных компонентов отечественного и импортного производства напрямую от производителей и с крупнейших мировых складов;
- Поставка более 17-ти миллионов наименований электронных компонентов;
- Поставка сложных, дефицитных, либо снятых с производства позиций;
- Оперативные сроки поставки под заказ (от 5 рабочих дней);
- Экспресс доставка в любую точку России;
- Техническая поддержка проекта, помощь в подборе аналогов, поставка прототипов;
- Система менеджмента качества сертифицирована по Международному стандарту ISO 9001;
- Лицензия ФСБ на осуществление работ с использованием сведений, составляющих государственную тайну;
- Поставка специализированных компонентов (Xilinx, Altera, Analog Devices, Intersil, Interpoint, Microsemi, Aeroflex, Peregrine, Syfer, Eurofarad, Texas Instrument, Miteq, Cobham, E2V, MA-COM, Hittite, Mini-Circuits, General Dynamics и др.);

Помимо этого, одним из направлений компании «ЭлектроПласт» является направление «Источники питания». Мы предлагаем Вам помощь Конструкторского отдела:

- Подбор оптимального решения, техническое обоснование при выборе компонента;
- Подбор аналогов;
- Консультации по применению компонента;
- Поставка образцов и прототипов;
- Техническая поддержка проекта;
- Защита от снятия компонента с производства.



Как с нами связаться

Телефон: 8 (812) 309 58 32 (многоканальный)

Факс: 8 (812) 320-02-42

Электронная почта: org@eplast1.ru

Адрес: 198099, г. Санкт-Петербург, ул. Калинина, дом 2, корпус 4, литера А.