

The Multi Axial Rotational Connector “MARC” features 8 Powerpole® contacts integrated into a blindmate housing. The connector is designed to blindmate from 2 rotating axis or straight on. The two row, horizontally oriented connector uses our industry leading flat wiping contacts. The MARC is rated to 29 amps per circuit and can be configured with 8 standard length contacts or 6 standard length and 2 pre mate, multi-purpose contacts, which can function as ground, power or signal. The rugged connector is UL listed and rated up to 10,000 mating cycles. The dielectric is a chemically resistant PBT plastic. APP connectors are manufactured using the finest materials and world-class manufacturing processes. They embody the highest quality in the industry and meet all applicable industry standards.

- **Rotational Blindmate Error Correction**
Enables blindmating from 2 independently rotating axes with .100” of error correction
- **Sequential Mating**
Can be configured with up to 8 power and signal or 6 power and signal circuits and 2 pre mate contacts

- **Rugged and Durable**
- The connector is rated up to 10,000 mating cycles
- Constructed of chemically resistant PBT plastic
- **Interchangeable Genderless Design**
Makes assembly quick and easy and reduces number of parts stocked

| ORDERING INFORMATION |

Housings

| Description | - Part Numbers - |
|------------------------------|------------------|
| Minimum Quantity | 25 |
| Housing with springs | 602G00 |
| Housing with float mount kit | 602G01 |
| Housing with fixed mount kit | 602G02 |

PP15-45 Tin Plated Power Contacts

Offer cost effective performance up to 1,500 mating cycles. See specifications and temperature charts for amperage ratings by wire size.

| Barrel | AWG | mm ² | Mating Force | Loose Piece Part Numbers | Reeled Part Numbers |
|------------------------|--------------|-----------------|--------------|--------------------------|---------------------|
| Minimum Quantity | | | | 200 | 5,000 |
| Open | 14 to 10 K* | 2.1 to 5.3 | High | 269G3-LPBK | 269G3 |
| Open | 14 to 10 K* | 2.1 to 5.3 | Low | 261G2-LPBK | 261G2 |
| Open | 14 to 10 SF* | 2.1 to 6.0 | High | 201G1H-LPBK | 201G1H |
| Open | 14 to 10 SF* | 2.1 to 6.0 | Low | 200G1L-LPBK | 200G1L |
| Open | 16 to 12 | 1.3 to 3.3 | High | 269G1-LPBK | 269G1 |
| Open | 16 to 12 | 1.3 to 3.3 | Low | 261G1-LPBK | 261G1 |
| Open | 20 to 16 | 0.52 to 1.3 | High | 269G2-LPBK | 269G2 |
| Open | 20 to 16 | 0.52 to 1.3 | Low | 262G1-LPBK | 262G1 |
| Open | 20 to 16 SF* | 0.52 to 1.5 | Low | 200G2L-LPBK | 200G2L |

45A Premate Ground Wire Contacts

Tin or silver plated contacts are rated for ground or power. Hand crimp tools are available for loose piece contacts. Reeled contacts can be used with high volume press and applicator crimp tooling. Tin contacts are rated for up to 1,500 mating cycles. Silver contacts are rated up to 10,000 mating cycles.

| Type | AWG | mm ² | Mating Force | Loose Piece Part Numbers | Reeled Part Numbers |
|------------------------|----------|-----------------|--------------|--------------------------|---------------------|
| Minimum Quantity | | | | 200 | 5,000 |
| Open, Tin | 14 to 10 | 2.1 to 6.0 | Low | 1830G1-LPBK | 1830G1 |
| Open, Silver | 14 to 10 | 2.1 to 6.0 | Low | 1830G2-LPBK | 1830G2 |

PP15-45 Silver Plated Power Contacts

Maximize performance by offering up to 10,000 mating cycles and are recommended for circuit interrupt or hot plug applications. See specifications and temperature charts for amperage ratings by wire size. Only closed barrel contacts are suitable for soldering.

| Barrel | AWG | mm ² | Mating Force | Loose Piece Part Numbers | Reeled Part Numbers |
|------------------------|--------------|-----------------|--------------|--------------------------|---------------------|
| Minimum Quantity | | | | 5,000 | 200 |
| Open | 14 to 10 K* | 2.1 to 5.3 | Low | - | 261G3-LPBK |
| Open | 14 to 10 SF* | 2.1 to 6.0 | High | - | 201G3H |
| Open | 14 to 10 SF* | 2.1 to 6.0 | Low | - | 200G3L-LPBK |
| Open | 16 to 12 | 1.3 to 3.3 | Low | - | 261G4-LPBK |
| Open | 20 to 16 | 0.52 to 1.3 | Low | - | 262G2-LPBK |
| Open | 20 to 16 SF* | 0.52 to 1.5 | Low | - | 200G4L |
| Closed | 16 to 12 | 1.3 to 3.3 | Low | 1331-BK | 1331 |
| Closed | 20 to 16 | 0.52 to 1.3 | Low | 1332-BK | 1332 |

Accessories

| Description | - Part Numbers - |
|------------------------|------------------|
| Minimum Quantity | 25 |
| Float Mount Kit | 110G69 |
| Fixed Mount Kit | 103G40 |

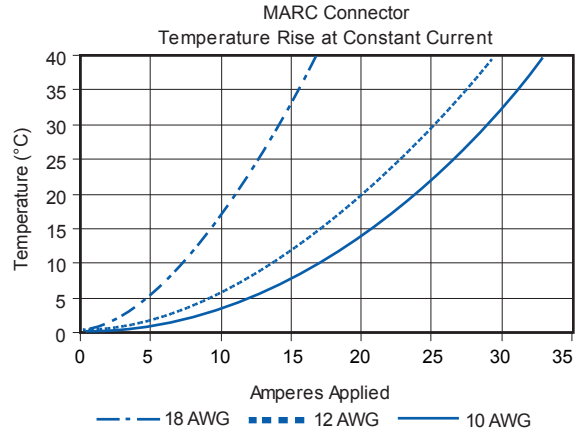
K* - For #10 AWG class K stranded wire or smaller. For larger wires use superflex contacts.

SF*- Indicates wires with high stranding such as Super Flex.

SPECIFICATIONS

| Electrical | |
|---|--|
| Current Rating (Amperes) | #10 AWG = 29A @ 30° rise #12 AWG = 24A @ 30° rise #18 AWG = 14A @ 30° rise |
| Voltage Rating (AC/DC) | 600V AC/DC per UL1977 150V DC per EN1175-1 |
| Contact Barrel Wire Size (AWG) | 10 to 20 |
| (mm²) | 4 to 0.5 |
| Average Contact Resistance | 15A contact = 875 x 106 ohms 30A contact = 600 x 106 ohms 45A contact = 525 x 106 ohms |
| Mechanical | |
| Contact Retention Force (lbf) | 25 (N) 111 |
| Maximum Wire Insulation Diameter (inches) | 0.175 |
| (mm) | 4.45 |
| No Load (mating cycles) | Up to 10,000 |
| Average Disconnect Force -Fully Loaded (lbf) | 18 |
| (N) | 80 |
| Operating Temperature Range (°C) | -40° to 125° |
| (°F) | -40° to 257° |

TEMPERATURE CHART



Materials
Flammability Rating of Housing Material PBT UL94 V-0



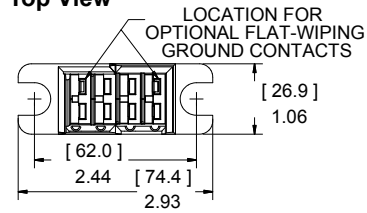
TOOLING INFORMATION

| Wire Size | | Loose Piece Part Numbers | | Loose Piece Contact Crimp Tool | | | | | Reeled Part Numbers | | Reeled Contact Crimp Tools | | |
|---|-----------------|--------------------------|----------------|--------------------------------|----------------------|-------|-----------|------------------|---------------------|----------------|----------------------------|-------------------------------|-------------------------------|
| AWG | mm ² | Tin Plating | Silver Plating | Hand Tool or | Pneumatic Bench Tool | + Die | + Locator | Number of Crimps | Tin Plating | Silver Plating | ATS Applicator | ATS Press | Air Feed Kit* |
| PP15 / 45 Flat Wiping Power & Ground | | | | | | | | | | | | | |
| 16 / 20 | 1.3 / 0.52 | N/A | 1332 | 1309G2 or 1309G8 | 1367G1 | | | | N/A | N/A | N/A | N/A | N/A |
| 12 / 16 | 3.3 / 1.3 | N/A | 1331 | | | | | | N/A | N/A | N/A | N/A | N/A |
| 16 / 20 | 1.3 / 0.52 | 262G1-LPBK | 262G2-LPBK | 1309G3 or 1309G8 | N/A | N/A | N/A | Single | 262G1 | 262G2 | 1385519-1 | 1725900-2 or [354500-1] | 1424266-1 or [354578-1] |
| 16 / 20 | 1.5 / 0.52 | 200G2L-LPBK | 200G4L-LPBK | | | | | | 200G2L | 200G4L | TBD | | |
| 16 / 20 | 1.3 / 0.52 | 269G2-LPBK | N/A | 1309G6 or 1309G8 | N/A | N/A | N/A | Single | 269G2 | N/A | 1385519-1 | 1725900-2 or [354500-1] | 1424266-1 or [354578-1] |
| 12 / 16 | 3.3 / 1.3 | 261G1-LPBK | 261G4-LPBK | | | | | | 261G1 | 261G4 | 1385520-1 | | |
| 10 / 14 | 5.3 / 2.1 | 261G2-LPBK | 261G3-LPBK | 1309G6 or 1309G8 | N/A | N/A | N/A | Single | 261G2 | 261G3 | 1385458-1 | 1725900-2 or [354500-1] | 1424266-1 or [354578-1] |
| 12 / 16 | 3.3 / 1.3 | 269G1-LPBK | N/A | | | | | | 269G1 | N/A | 1385520-1 | | |
| 10 / 14 | 5.3 / 2.1 | 269G3-LPBK | N/A | 1309G6 or 1309G8 | N/A | N/A | N/A | Single | 269G3 | N/A | 1385458-1 | 1725900-2 or [354500-1] | 1424266-1 or [354578-1] |
| 10 / 14 | 6.0 / 2.1 | 200G1L-LPBK | 200G3L-LPBK | | | | | | 200G1L | 200G3L | 1385460-1 | | |
| 10 / 14 | 6.0 / 2.1 | 201G1H-LPBK | 201G3H-LPBK | 1309G6 or 1309G8 | N/A | N/A | N/A | Single | 201G1H | 201G3H | 1385460-1 | 1725900-2 or [354500-1] | 1424266-1 or [354578-1] |
| 10 / 14 | 6.0 / 2.1 | 1830G1-LPBK | 1830G2-LPBK | | | | | | 1830G1 | 1830G2 | 1385460-1 | | |

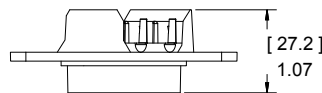
* All ATS applicators for APP® contacts are air feed style and require the press to have an air feed kit installed.
NOTE: See website for the most current information.

DIMENSIONS

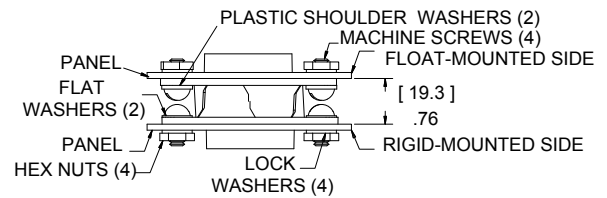
Top View



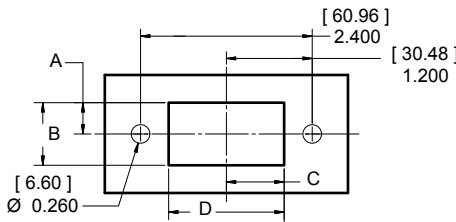
Side View



Mounted View



Layout For Panel Cut-Outs



| Mounting Hardware | - A - | | - B - | | - C - | | - D - | |
|-------------------|-------|-------|-------|-------|-------|-------|-------|-------|
| | mm | in. | mm | in. | mm | in. | mm | in. |
| Float | 12.89 | 0.508 | 25.78 | 1.015 | 22.29 | 0.878 | 44.58 | 1.755 |
| Fixed | 11.11 | 0.438 | 22.23 | 0.875 | 20.51 | 0.808 | 41.02 | 1.615 |

All Data Subject To Change Without Notice

*APP & Anderson Power Products are registered trademarks of Anderson Power Products®

15406 DS-MARC REV 05

HEADQUARTERS: Anderson Power Products®, 13 Pratts Junction Road, Sterling, MA 01564-2305 USA T:978-422-3600 F:978-422-0128

EUROPE: Anderson Power Products® Ltd., Unit 3, Europa Court, Europa Boulevard, Westbrook, Warrington, Cheshire, WA5 7TN United Kingdom T: +44 (0) 1925 428390 F: +44 (0) 1925 520203

ASIA / PACIFIC: IDEAL Anderson Asia Pacific Ltd., Unit 922-928 Topsail Plaza, 11 On Sum Street, Shatin N.T., Hong Kong T: +(852) 2636 0836 F: +(852) 2635 9036

CHINA: IDEAL Anderson Technologies (Shenzhen) Ltd., Block A8 Tantou Western Industrial Park, Songgang Baoan District, Shenzhen, P.R. China 518105 T: +(86) 755 2768 2118 F: +(86) 755 2768 2218

TAIWAN: IDEAL Anderson Asia Pacific Ltd., Taiwan Branch, 4F.-2, No.116, Dadun 20th St., Situn District, Taichung City 407, Taiwan (R.O.C.) T: +(886) 4 2310 6451 F: +(886) 4 2310 6460

www.andersonpower.com

Mouser Electronics

Authorized Distributor

Click to View Pricing, Inventory, Delivery & Lifecycle Information:

[Anderson Power Products:](#)

[200G3L](#) [200G3L-LPBK](#)



Компания «ЭлектроПласт» предлагает заключение долгосрочных отношений при поставках импортных электронных компонентов на взаимовыгодных условиях!

Наши преимущества:

- Оперативные поставки широкого спектра электронных компонентов отечественного и импортного производства напрямую от производителей и с крупнейших мировых складов;
- Поставка более 17-ти миллионов наименований электронных компонентов;
- Поставка сложных, дефицитных, либо снятых с производства позиций;
- Оперативные сроки поставки под заказ (от 5 рабочих дней);
- Экспресс доставка в любую точку России;
- Техническая поддержка проекта, помощь в подборе аналогов, поставка прототипов;
- Система менеджмента качества сертифицирована по Международному стандарту ISO 9001;
- Лицензия ФСБ на осуществление работ с использованием сведений, составляющих государственную тайну;
- Поставка специализированных компонентов (Xilinx, Altera, Analog Devices, Intersil, Interpoint, Microsemi, Aeroflex, Peregrine, Syfer, Eurofarad, Texas Instrument, Miteq, Cobham, E2V, MA-COM, Hittite, Mini-Circuits, General Dynamics и др.);

Помимо этого, одним из направлений компании «ЭлектроПласт» является направление «Источники питания». Мы предлагаем Вам помощь Конструкторского отдела:

- Подбор оптимального решения, техническое обоснование при выборе компонента;
- Подбор аналогов;
- Консультации по применению компонента;
- Поставка образцов и прототипов;
- Техническая поддержка проекта;
- Защита от снятия компонента с производства.



Как с нами связаться

Телефон: 8 (812) 309 58 32 (многоканальный)

Факс: 8 (812) 320-02-42

Электронная почта: org@eplast1.ru

Адрес: 198099, г. Санкт-Петербург, ул. Калинина, дом 2, корпус 4, литера А.