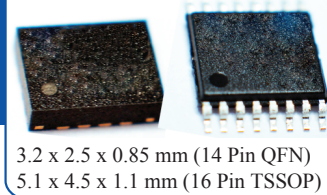


# CRYSTAL-LESS PCI EXPRESS DUAL OUTPUT ULTRA MINIATURE PURE SILICON™ SMD CLOCK GENERATOR



AB-557-03 Series

Moisture Sensitivity Level  
MSL 1 – 14 QFN  
MSL 3 – 16 TSSOP



RoHS/RoHS II compliant

## FEATURES:

- Meets PCIe Gen1, Gen2, & Gen3 specs.
- High Performance MEMS Technology by Discera
- Available Mixed Output Formats: HCSL, LVPECL, LVDS or LVCMOS
- Wide Temperature Range: -40° to 105° C
- Wide Supply Range: 2.25V to 3.6 V
- Low Power Consumption
- Excellent Shock & Vibration Immunity

## APPLICATIONS:

- Solid State Storage
- Storage Area Networks
- Passive Optical Networks
- Ethernet: 1G, 10GBASE-T/KR/LR/SR, and FCoE
- TV and other Consumer Electronics
- Industrial and Medical
- Scanner, Printer

## STANDARD SPECIFICATIONS:

| Parameters  |                | Minimum   | Typical | Maximum           | Units | Notes  |
|---|----------------|---|---------|-------------------|-------|--|
| Frequency   | $f_0$          | 2.3   | 100     | 460 <sup>*1</sup> | MHz   |  |
| Operating Temperature                                 |                | -20   |         | +70               | °C    | See options  |
| Storage Temperature                                   |                | -55   |         | +150              | °C    |  |
| Overall Freq. Stability <sup>*2</sup>                 | $\Delta f$     | -100  |         | +100              | ppm   | See options  |
| Supply Voltage  | $V_{DD}$       | +2.25   |         | +3.6              | V     |  |
| Supply Current- Enabled                               | $I_{DD}$       |   | 60      |                   | mA    | $R_L=50\Omega$ ,<br>$F_{01}=F_{02}=100.00\text{MHz}$           |
| Supply Current- Disabled                              | $I_{DD}$       |   | 21      | 23                | mA    |  |
| Startup Time  | $t_{su}$       |   |         | 5                 | ms    |  |
| Enable Time   | $t_{EN}$       |   |         | 20                | ns    |  |
| Disable Time  | $t_{DA}$       |   |         | 5                 | ns    |  |
| Tri-state Function (Standby/Disable)                  |                | "1" ( $V_{IH} \geq 0.75 * V_{DD}$ ) or Open: Oscillation<br>"0" ( $V_{IL} < 0.25 * V_{DD}$ ) : Hi Z |         |                   | V     | 40k $\Omega$ pull-up resistor embedded                         |
| Aging   |                | -5.0  |         | +5.0              | ppm   | First year   |
| Output Offset Voltage                                 | $V_{OH}$       | 0.725   |         |                   | V     | $R_L=50 \Omega$  |
|   | $V_{OL}$       |   |         | 0.10              |       |  |
| Peak to Peak Output Swing                             |                |   | 750     |                   | mV    | Single-Ended   |
| Rise Time   | $t_r$          | 200   |         | 400               | ps    | $R_L=50 \Omega$ , $C_L=2\text{pF}$                             |
| Fall Time   | $t_f$          | 200   |         | 400               | ps    | 20% to 80%   |
| Duty Cycle  | SYM            | 48  |         | 52                | %     | Differential   |
| Period Jitter   | $J_{PER}$      |   | 2.5     |                   | pSRMS | $F_{01}=F_{02}=100.00\text{MHz}$                               |
| Integrated Phase Noise<br>(Common Clock Architecture) | $R_J$          |   | 0.540   |                   | pSRMS | PCIe Gen 1.1<br>$T_J = D_J + 14.069 \times R_J$<br>(BER 10-12) |
|   | $D_J$          |   | 0.832   | 41.9              | pSP-P |  |
|   | $T_J$          |   | 8.536   | 86.0              |       |  |
|   | $J_{RMS-CCHF}$ |   | 0.458   | 3.1               | pSRMS | PCIe Gen 2.1<br>1.5 MHz to Nyquist                             |
|   | $J_{RMS-CCLF}$ |   | 0.030   | 3.0               |       | PCIe Gen 2.1<br>10kHz to 1.5 MHz                               |
|   | $J_{RMS-CC}$   |   | 0.165   | 1.0               |       | PCIe Gen 3.0   |
| Integrated Phase Noise<br>(Data Clock Architecture)   | $J_{RMS-DCHF}$ |   | 0.561   | 4.0               | pSRMS | PCIe Gen 2.1<br>1.5 MHz to Nyquist                             |
|   | $J_{RMS-DCLF}$ |   | 1.778   | 7.5               |       | PCIe Gen 2.1<br>10kHz to 1.5 MHz                               |
|   | $J_{RMS-DC}$   |   | 0.147   | 1.0               |       | PCIe Gen 3.0   |

\*1. For frequency other than 100MHz, please contact ABRACON or consider using ASEMDxx series

2. Frequency stability includes frequency variations due to initial tolerance, temp. and power supply voltage

ABRACON IS  
ISO9001:2008  
CERTIFIED

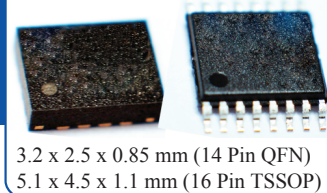


**ABRACON**  
CORPORATION

Visit [www.abracon.com](http://www.abracon.com) for Terms & Conditions of Sale  
30332 Esperanza, Rancho Santa Margarita, California 92688  
tel 949-546-8000 | fax 949-546-8001 | [www.abracon.com](http://www.abracon.com)

Revised: 04.12.13

# CRYSTAL-LESS PCI EXPRESS DUAL OUTPUT ULTRA MINIATURE PURE SILICON™ SMD CLOCK GENERATOR



AB-557-03 Series

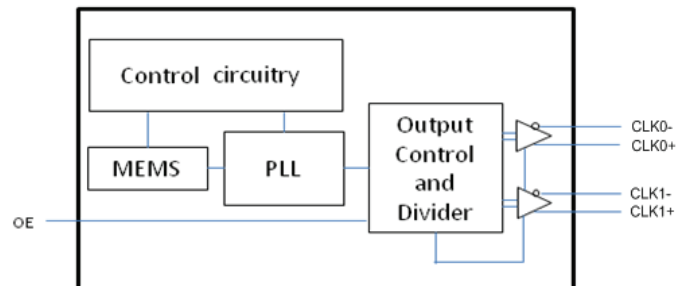


RoHS/RoHS II compliant

## Absolute Maximum Ratings

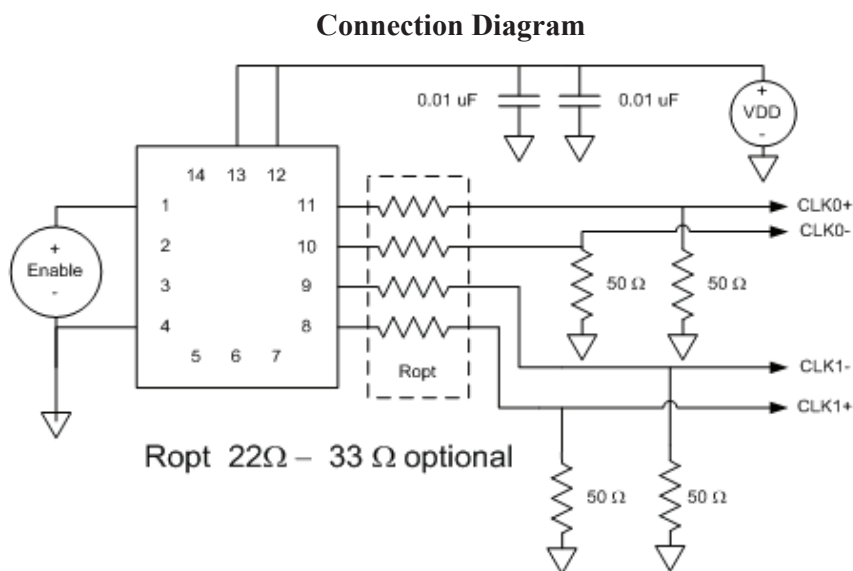
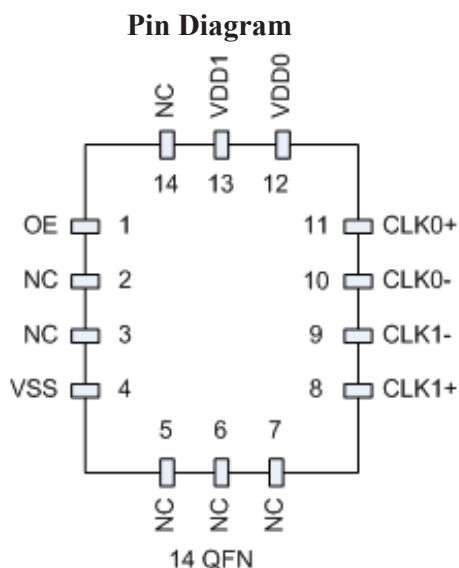
| Item            | Minimum | Maximum              | Unit | Condition |
|-----------------|---------|----------------------|------|-----------|
| Supply Voltage  | -0.3    | +4.0                 | V    |           |
| Input Voltage   | -0.3    | V <sub>dd</sub> +0.3 | V    |           |
| Junction Temp.  |         | +150                 | °C   |           |
| Storage Temp.   | -55     | +150                 | °C   |           |
| Soldering Temp. |         | +260                 | °C   | 40sec max |
| ESD             |         |                      |      |           |
| HBM             |         | 4,000                | V    |           |
| MM              |         | 400                  |      |           |
| CDM             |         | 1,500                |      |           |

## Block Diagram:



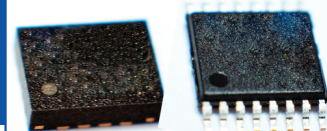
## PIN LAYOUT:

### 14 Pin QFN:



| Pin No. | Pin Name | Pin Type | Description                                    |
|---------|----------|----------|--|
| 1       | OE       | I        | Output Enable; active high                     |
| 2       | NC       | NA       | Ground Connected or Leave Unconnected          |
| 3       | NC       | NA       | Ground Connected or Leave Unconnected          |
| 4       | VSS      | Power    | Ground   |
| 5       | NC       | NA       | Ground Connected or Leave Unconnected          |
| 6       | NC       | NA       | Ground Connected or Leave Unconnected          |
| 7       | NC       | NA       | Ground Connected or Leave Unconnected          |
| 8       | CLK1+    | O        | True output of differential pair               |
| 9       | CLK1-    | O        | Complement output of differential pair         |
| 10      | CLK0-    | O        | Complement output of differential pair         |
| 11      | CLK0+    | O        | True output of differential pair               |
| 12      | VDD0     | Power    | Power Supply for Output 0 (CLK+/- 0)           |
| 13      | VDD1     | Power    | Power Supply for Core and Output 1 (CLK +/- 1) |
| 14      | NC       | NA       | Ground Connected or Leave Unconnected          |

# CRYSTAL-LESS PCI EXPRESS DUAL OUTPUT ULTRA MINIATURE PURE SILICON™ SMD CLOCK GENERATOR



3.2 x 2.5 x 0.85 mm (14 Pin QFN)  
5.1 x 4.5 x 1.1 mm (16 Pin TSSOP)

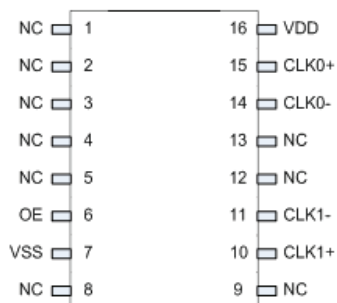
AB-557-03 Series



RoHS/RoHS II compliant

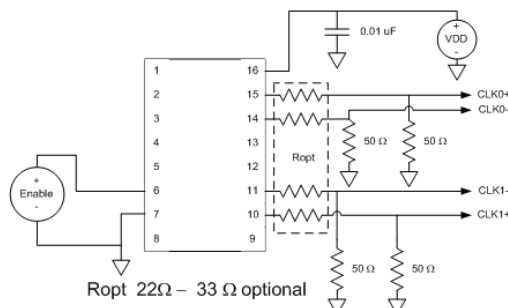
## 16 Pin TSSOP:

Pin Diagram



16-pin TSSOP

Connection Diagram



| Pin No. | Pin Name | Pin Type | Description                            |
|---------|----------|----------|--|
| 1       | NC       | NA       | Leave Unconnected                      |
| 2       | NC       | NA       | Leave Unconnected                      |
| 3       | NC       | NA       | Leave Unconnected                      |
| 4       | NC       | NA       | Leave Unconnected                      |
| 5       | NC       | NA       | Leave Unconnected                      |
| 6       | OE       | I        | Output Enable; active high             |
| 7       | VSS      | Power    | Ground                                 |
| 8       | NC       | NA       | Leave Unconnected                      |
| 9       | NC       | NA       | Leave Unconnected                      |
| 10      | CLK1+    | O        | True output of differential pair       |
| 11      | CLK1-    | O        | Complement output of differential pair |
| 12      | NC       | NA       | Leave Unconnected                      |
| 13      | NC       | NA       | Leave Unconnected                      |
| 14      | CLK0-    | O        | Complement output of differential pair |
| 15      | CLK0+    | O        | True output of differential pair       |
| 16      | VDD      | Power    | Power Supply                           |

## PART IDENTIFICATION:

AB-557-03-□□ - □ - □ - □ - □

| Output Format, Clk1 |
|---------------------|
| C: LVCMOS           |
| LP: LVPECL          |
| LV: LVDS            |
| HC: HCSL            |

| Output Format, Clk0 |
|---------------------|
| C: LVCMOS           |
| LP: LVPECL          |
| LV: LVDS            |
| HC: HCSL            |

| Package Type |
|--------------|
| F: 14-QFN    |
| S: 16-TSSOP  |

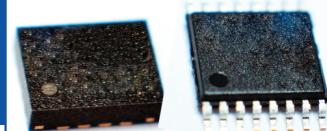
| Operating Temp.   |
|-------------------|
| E: -20°C ~ +70°C  |
| L: -40°C ~ +85°C  |
| X: -40°C ~ +105°C |

| Overall Freq. Stability |
|-------------------------|
| Blank: ±100ppm          |
| C: ±50ppm               |

| Packaging                    |
|------------------------------|
| Blank: Bulk                  |
| T: Tape & Reel(1kpcs / reel) |
| T3: Tape & Reel(3kpcs/reel)  |

Note: For frequency other than 100MHz, please contact ABRACON or consider using ASEMDxx series

# CRYSTAL-LESS PCI EXPRESS DUAL OUTPUT ULTRA MINIATURE PURE SILICON™ SMD CLOCK GENERATOR



3.2 x 2.5 x 0.85 mm (14 Pin QFN)  
5.1 x 4.5 x 1.1 mm (16 Pin TSSOP)

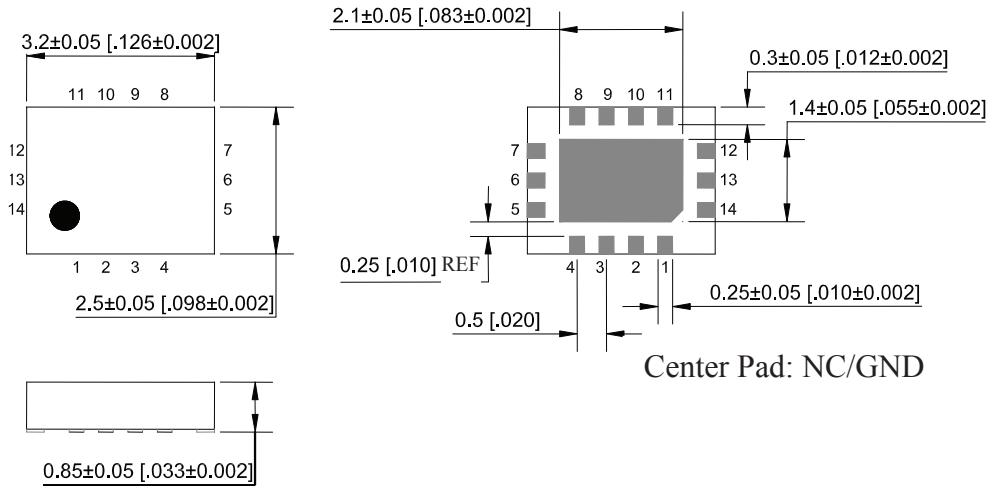
AB-557-03 Series



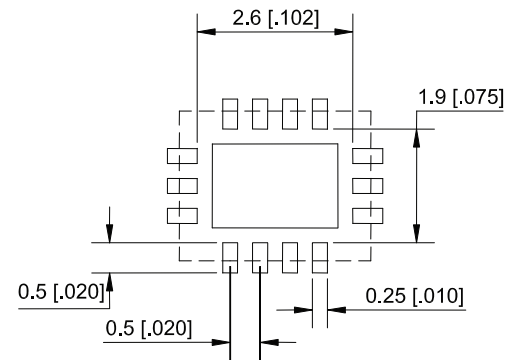
RoHS/RoHS II compliant

## OUTLINE DRAWING:

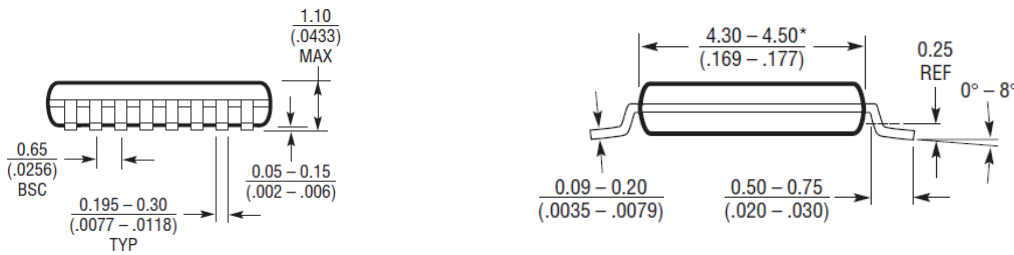
### 14 Pin QFN:



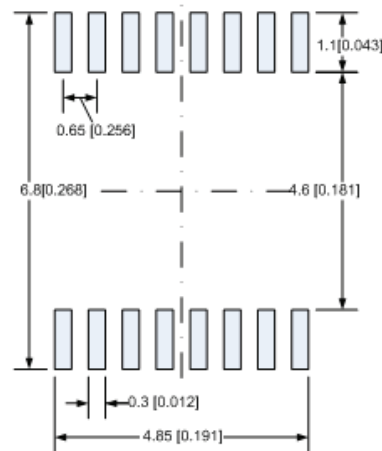
### Recommended Solder Pad Layout



### 16 Pin TSSOP:



### Recommended Solder Pad Layout



\* Dimensions do not include mold flash. Mold flash shall not exceed 0.150mm (.006 inches) per side.

Dimensions: mm (inches)

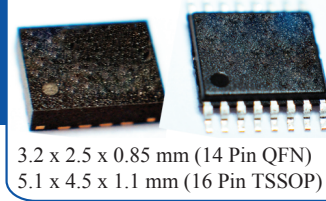
ABRACON IS  
ISO9001:2008  
CERTIFIED



**ABRACON**  
CORPORATION

Visit [www.abracon.com](http://www.abracon.com) for Terms & Conditions of Sale **Revised: 04.12.13**  
30332 Esperanza, Rancho Santa Margarita, California 92688  
tel 949-546-8000 | fax 949-546-8001 | [www.abracon.com](http://www.abracon.com)

# CRYSTAL-LESS PCI EXPRESS DUAL OUTPUT ULTRA MINIATURE PURE SILICON™ SMD CLOCK GENERATOR



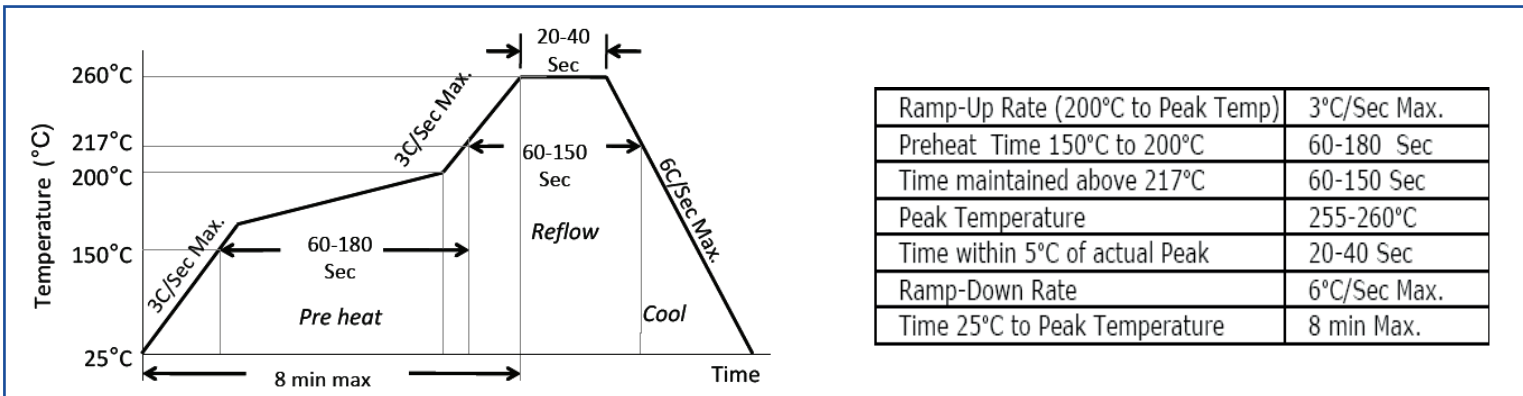
AB-557-03 Series



RoHS/RoHS II compliant

3.2 x 2.5 x 0.85 mm (14 Pin QFN)  
5.1 x 4.5 x 1.1 mm (16 Pin TSSOP)

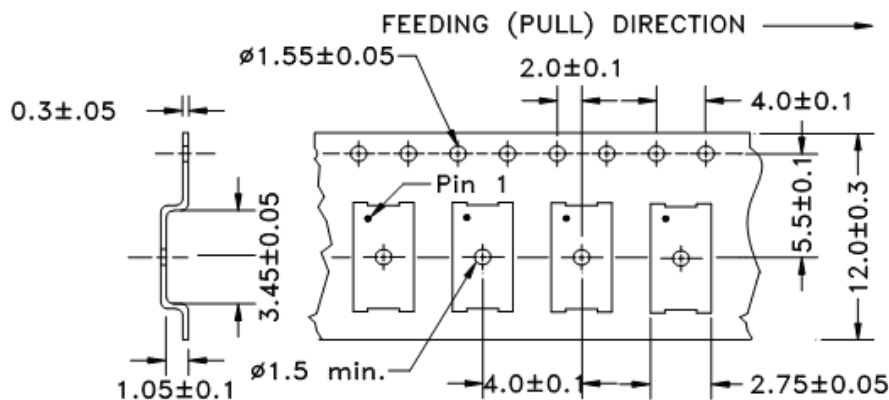
## REFLOW PROFILE:



## TAPE & REEL:

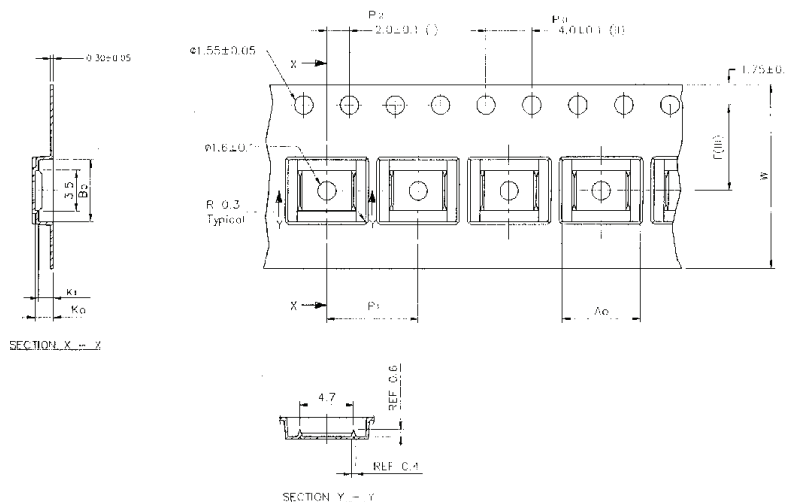
### 14 Pin QFN Tape Drawing:

T= 1,000pcs/reel  
T3= 3,000pcs/reel



### 16 Pin TSSOP Tape Drawing

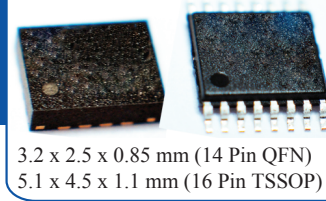
T= 1,000pcs/reel  
T3= 3,000pcs/reel



| A0       | B0       | K0       | K1       | F        | P1       | W         |
|----------|----------|----------|----------|----------|----------|-----------|
| 6.80±0.1 | 5.40±0.1 | 1.60±0.1 | 1.30±0.1 | 5.50±0.1 | 8.00±0.1 | 12.00±0.3 |

Dimensions: mm

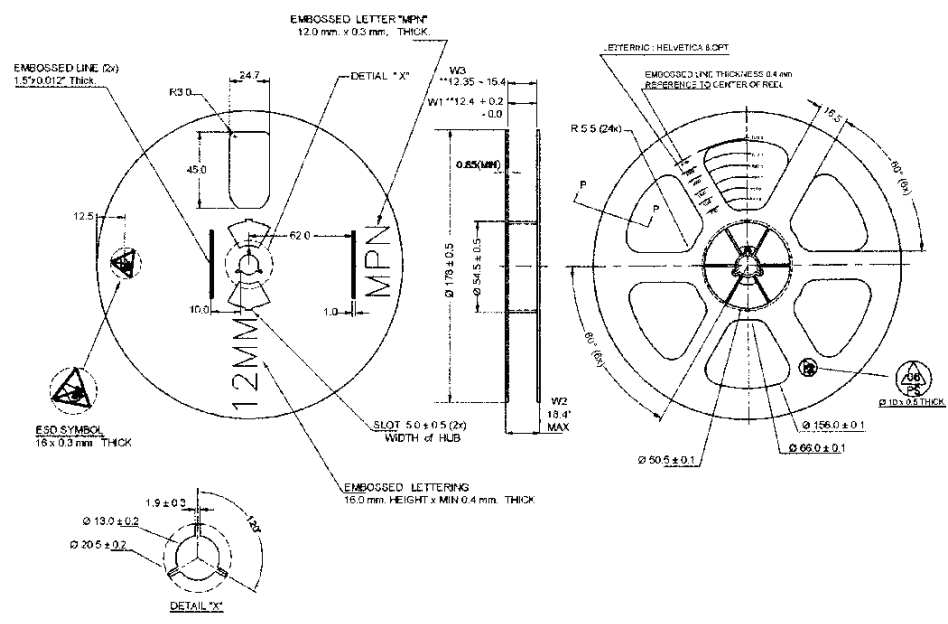
# CRYSTAL-LESS PCI EXPRESS DUAL OUTPUT ULTRA MINIATURE PURE SILICON™ SMD CLOCK GENERATOR



AB-557-03 Series

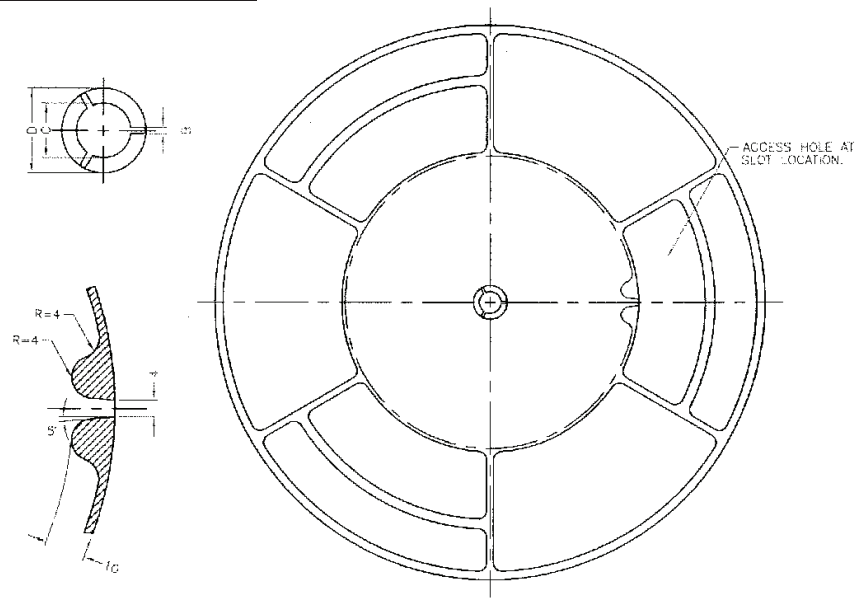
**Pb** RoHS/RoHS II compliant

## 7" Reel Drawing (1000pcs/reel)



Dimensions: mm

## 13" Reel Drawing (3000pcs/reel)



| A         | N             | W1        | W2        | W3                       | D         | B       | C             | Tape Width |
|-----------|---------------|-----------|-----------|--------------------------|-----------|---------|---------------|------------|
| 330 (13") | 178 (7") max. | 12.4+2/-0 | 18.4 max. | 12.35 min.<br>15.40 max. | 20.2 min. | 1.5 min | 13.0+0.5/-0.2 | 12         |

**ATTENTION:** Abracon Corporation's products are COTS – Commercial-Off-The-Shelf products; suitable for Commercial, Industrial and, where designated, Automotive Applications. Abracon's products are not specifically designed for Military, Aviation, Aerospace, Life-dependant Medical applications or any application requiring high reliability where component failure could result in loss of life and/or property. For applications requiring high reliability and/or presenting an extreme operating environment, written consent and authorization from Abracon Corporation is required. Please contact Abracon Corporation for more information.



Visit [www.abracon.com](http://www.abracon.com) for Terms & Conditions of Sale **Revised: 04.12.13**  
 30332 Esperanza, Rancho Santa Margarita, California 92688  
 tel 949-546-8000 | fax 949-546-8001 | [www.abracon.com](http://www.abracon.com)



Компания «ЭлектроПласт» предлагает заключение долгосрочных отношений при поставках импортных электронных компонентов на взаимовыгодных условиях!

Наши преимущества:

- Оперативные поставки широкого спектра электронных компонентов отечественного и импортного производства напрямую от производителей и с крупнейших мировых складов;
- Поставка более 17-ти миллионов наименований электронных компонентов;
- Поставка сложных, дефицитных, либо снятых с производства позиций;
- Оперативные сроки поставки под заказ (от 5 рабочих дней);
- Экспресс доставка в любую точку России;
- Техническая поддержка проекта, помощь в подборе аналогов, поставка прототипов;
- Система менеджмента качества сертифицирована по Международному стандарту ISO 9001;
- Лицензия ФСБ на осуществление работ с использованием сведений, составляющих государственную тайну;
- Поставка специализированных компонентов (Xilinx, Altera, Analog Devices, Intersil, Interpoint, Microsemi, Aeroflex, Peregrine, Syfer, Eurofarad, Texas Instrument, Miteq, Cobham, E2V, MA-COM, Hittite, Mini-Circuits, General Dynamics и др.);

Помимо этого, одним из направлений компании «ЭлектроПласт» является направление «Источники питания». Мы предлагаем Вам помощь Конструкторского отдела:

- Подбор оптимального решения, техническое обоснование при выборе компонента;
- Подбор аналогов;
- Консультации по применению компонента;
- Поставка образцов и прототипов;
- Техническая поддержка проекта;
- Защита от снятия компонента с производства.



#### Как с нами связаться

**Телефон:** 8 (812) 309 58 32 (многоканальный)

**Факс:** 8 (812) 320-02-42

**Электронная почта:** [org@eplast1.ru](mailto:org@eplast1.ru)

**Адрес:** 198099, г. Санкт-Петербург, ул. Калинина, дом 2, корпус 4, литера А.