

## Power Amplifier, 4 W 28.5 - 31 GHz

Rev. V1

### Features

- High Gain: 22 dB @ 30 GHz
- P1dB: 34.5 dBm
- P<sub>SAT</sub>: 36 dBm
- IM3 Level: -27 dBc @ P<sub>OUT</sub> 29 dBm/tone
- Power Added Efficiency: 23% @ P<sub>SAT</sub>
- Lead-Free 5 mm 32-lead AQFN Plastic Package
- RoHS\* Compliant

### Description

The MAAP-011139 is a 4-stage, 4 W power amplifier assembled in a lead-free 5 mm 32-lead AQFN plastic package. This power amplifier operates from 28.5 to 31 GHz and provides 22 dB of linear gain, 4 W saturated output power, and 23% efficiency while biased at 6 V.

The MAAP-011139 is a power amplifier ideally suited for VSAT communications.

This product is fabricated using a GaAs pHEMT process which features full passivation for enhanced reliability.

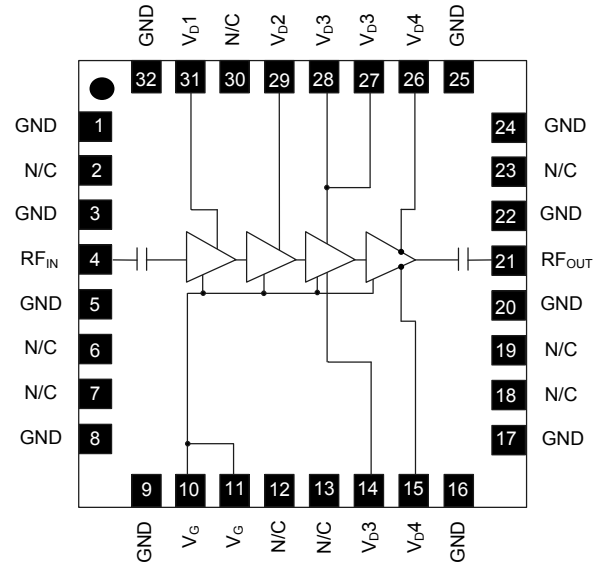
### Ordering Information<sup>1,2</sup>

| Part Number        | Package        |
|--------------------|----------------|
| MAAP-011139-TR0500 | 500 piece reel |
| MAAP-011139-SMB    | Sample Board   |

1. Reference Application Note M513 for reel size information.
2. All sample boards include 3 loose parts.

\*Restrictions on Hazardous Substances, European Union Directive 2011/65/EU.

### Functional Schematic



### Pin Configuration<sup>3</sup>

| Pin No. | Function        | Pin No.             | Function        |
|---------|-----------------|---------------------|-----------------|
| 1       | Ground          | 18, 19              | No Connection   |
| 2       | No Connection   | 20                  | Ground          |
| 3       | Ground          | 21                  | RF Output       |
| 4       | RF Input        | 22                  | Ground          |
| 5       | Ground          | 23                  | No Connection   |
| 6, 7    | No Connection   | 24, 25              | Ground          |
| 8, 9    | Ground          | 26                  | Drain Voltage 4 |
| 10      | Gate Voltage    | 27                  | Drain Voltage 3 |
| 11      | Gate Voltage    | 28                  | Drain Voltage 3 |
| 12, 13  | No Connection   | 29                  | Drain Voltage 2 |
| 14      | Drain Voltage 3 | 30                  | No Connection   |
| 15      | Drain Voltage 4 | 31                  | Drain Voltage 1 |
| 16, 17  | Ground          | 32                  | Ground          |
|         |                 | Paddle <sup>4</sup> | Ground          |

3. MACOM recommends connecting unused package pins to ground.
4. The exposed pad centered on the package bottom must be connected to RF, DC and thermal ground.

**Electrical Specifications: Freq. = 30 GHz, T<sub>A</sub> = +25°C, V<sub>D</sub> = 6 V, Z<sub>0</sub> = 50 Ω**

| Parameter              | Test Conditions                                | Units | Min. | Typ. | Max. |
|------------------------|--|-------|------|------|------|
| Gain                   | P <sub>IN</sub> = 0 dBm                        | dB    | 19   | 22   | —    |
| P <sub>OUT</sub>       | P <sub>IN</sub> = +17 dBm                      | dBm   | 34.5 | 36.0 | —    |
| IM3 Level              | P <sub>OUT</sub> = +29 dBm / tone              | dBc   | —    | -27  | —    |
| Power Added Efficiency | P <sub>SAT</sub> (P <sub>IN</sub> = +17 dBm)   | %     | —    | 23   | —    |
| Input Return Loss      | P <sub>IN</sub> = -20 dBm                      | dB    | —    | 10   | —    |
| Output Return Loss     | P <sub>IN</sub> = -20 dBm                      | dB    | —    | 10   | —    |
| Quiescent Current      | I <sub>DQ</sub> (see bias conditions, page 5 ) | mA    | —    | 2000 | —    |
| Current                | P <sub>SAT</sub> (P <sub>IN</sub> = +17 dBm)   | mA    | —    | 2700 | —    |

### Maximum Operating Conditions

| Parameter                           | Maximum        |
|-------------------------------------|----------------|
| Input Power                         | +17 dBm        |
| Junction Temperature <sup>5,6</sup> | +160°C         |
| Operating Temperature               | -40°C to +85°C |

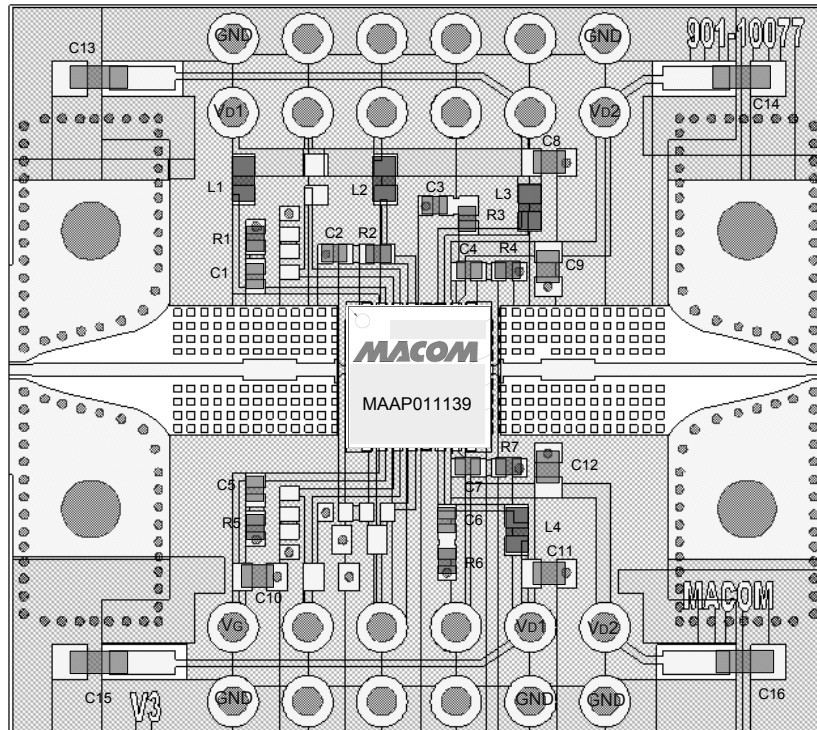
5. Operating at nominal conditions with junction temperature ≤ +160°C will ensure MTTF > 1 x 10<sup>6</sup> hours.
6. Junction Temperature (T<sub>J</sub>) = T<sub>C</sub> + Θ<sub>JC</sub> \* [(V \* I) - (P<sub>OUT</sub> - P<sub>IN</sub>)].  
Typical thermal resistance (Θ<sub>JC</sub>) = 4.4 °C/W.
  - a) For T<sub>C</sub> = +25°C,  
T<sub>J</sub> = +79°C @ 6 V, 2.7 A, P<sub>OUT</sub> = 36 dBm, P<sub>IN</sub> = 17 dBm
  - b) For T<sub>C</sub> = +85°C,  
T<sub>J</sub> = +143°C @ 6 V, 2.7 A, P<sub>OUT</sub> = 35.1 dBm, P<sub>IN</sub> = 17 dBm

### Absolute Maximum Ratings<sup>7,8</sup>

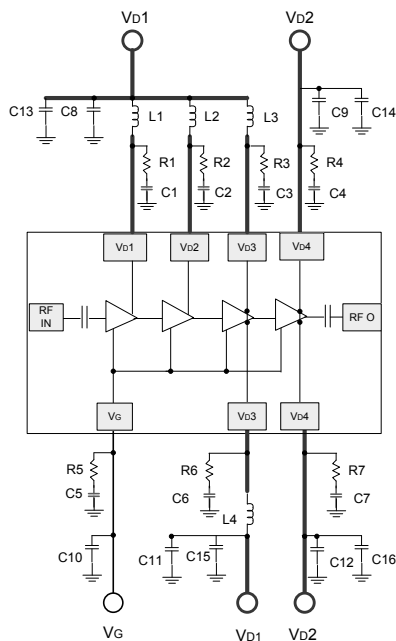
| Parameter                         | Absolute Maximum |
|-----------------------------------|------------------|
| Input Power                       | +23 dBm          |
| Drain Voltage                     | +6.5 V           |
| Gate Voltage                      | -3 to 0 V        |
| Junction Temperature <sup>9</sup> | +175°C           |
| Storage Temperature               | -65°C to +125°C  |

7. Exceeding any one or combination of these limits may cause permanent damage to this device.
8. MACOM does not recommend sustained operation near these survivability limits.
9. Junction Temperature directly effects device MTTF. Junction temperature should be kept as low as possible to maximize lifetime.

## Sample Board Layout



## Application Schematic



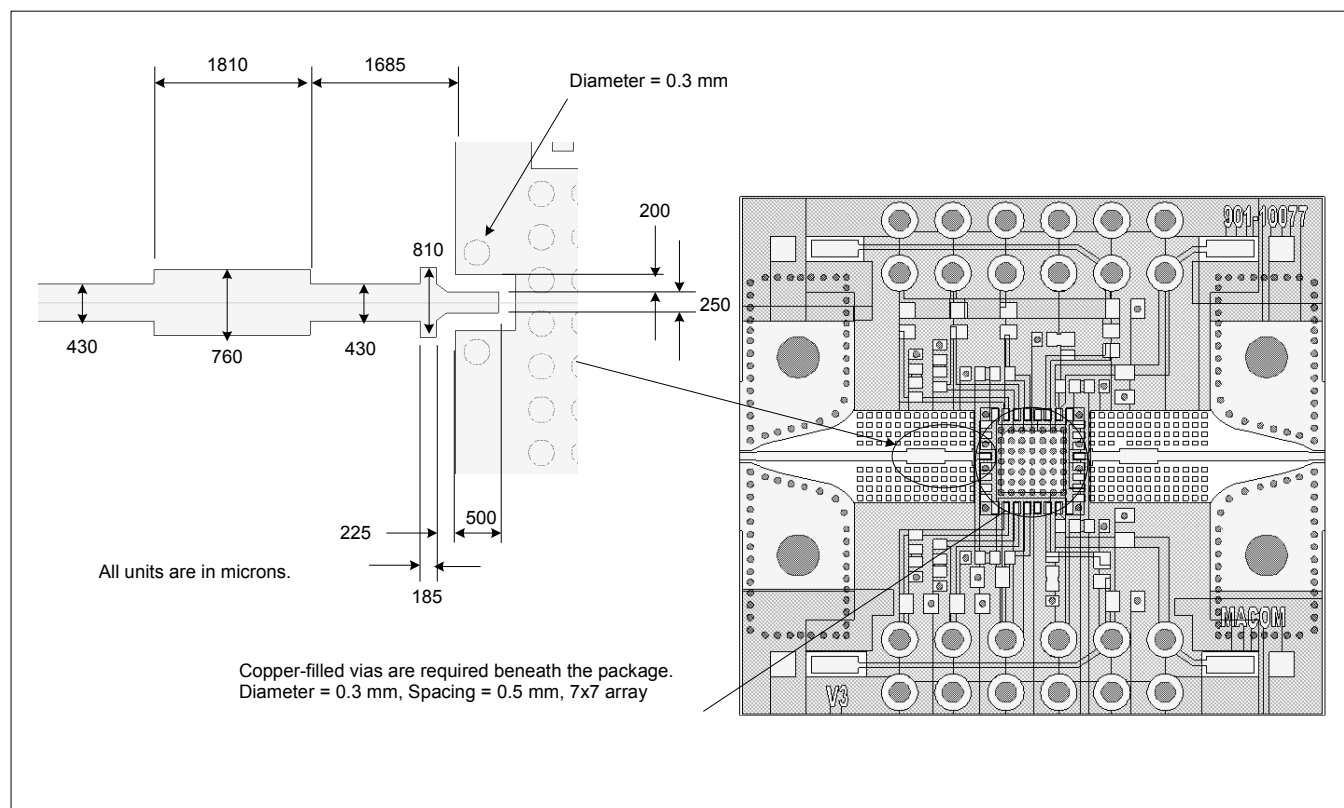
## Parts List

| Part                           | Value          | Case Style |
|--------------------------------|----------------|------------|
| C1 - C7                        | 0.01 $\mu$ F   | 0402       |
| C8 - C12                       | 1 $\mu$ F      | 0603       |
| C13 - C16                      | 10 $\mu$ F     | 0805       |
| R1 - R7                        | 10 $\Omega$    | 0402       |
| L1 - L4<br>(Chip Ferrite Bead) | BLM18HE601SN1D | 0603       |

## Sample Board Material Specifications

Top Layer: 1/2 oz Copper Cladding, 0.017 mm thickness  
Dielectric Layer: Rogers RO4003C 0.203 mm thickness  
Bottom Layer: 1/2 oz Copper Cladding, 0.017 mm thickness  
Finished overall thickness: 0.238 mm

**Sample Board Layout: RF input and output port pre-matching circuit patterns are designed to compensate for packaging effects. Input and output match patterns are identical.**



## Application Information

The MAAP-011139 is designed to be easy to use yet high performance. The ultra small size and simple bias allow easy placement on system board. RF input and output ports are DC de-coupled internally.

## Biasing conditions

Recommended biasing conditions are  $V_D = 6\text{ V}$ ,  $I_{DQ} = 2000\text{ mA}$  (controlled with  $V_G$ ). The drain bias voltage range is 3 to 6 V, and the quiescent drain current biasing range is 1500 to 2500 mA.

$V_G$  pins 10 and 11 are connected internally; choose either pin for layout convenience. Muting can be accomplished by setting the  $V_G$  to the pinched off voltage ( $V_G = -2\text{ V}$ ).

$V_D$  bias must be applied to  $V_{D1}$ ,  $V_{D2}$ ,  $V_{D3}$ , and  $V_{D4}$  pins.

$V_{D3}$  pins 14 and either pin 27 or 28 are required for current symmetry. Pins 27 and 28 are connected internally; choose either pin for layout convenience.

Both  $V_{D4}$  pins 15 and 26 are required for current symmetry.

## Operating the MAAP-011139

### Turn-on

1. Apply  $V_G$  (-1.5 V).
2. Apply  $V_D$  (6.0 V typical).
3. Set  $I_{DQ}$  by adjusting  $V_G$  more positive (typically  $V_G \sim -0.9\text{ V}$  for  $I_{DQ} = 2000\text{ mA}$ ).
4. Apply  $RF_{IN}$  signal.

### Turn-off

1. Remove  $RF_{IN}$  signal.
2. Decrease  $V_G$  to -1.5 V.
3. Decrease  $V_D$  to 0 V.

## Handling Procedures

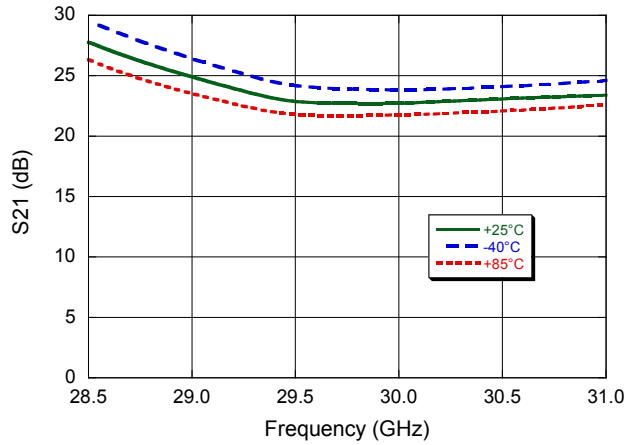
Please observe the following precautions to avoid damage:

### Static Sensitivity

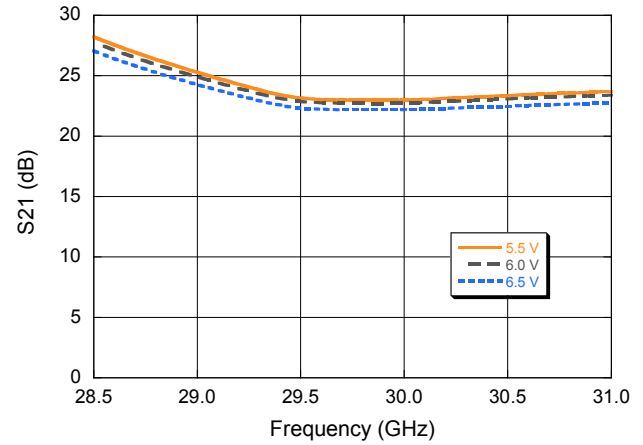
These electronic devices are sensitive to electrostatic discharge (ESD) and can be damaged by static electricity. Proper ESD control techniques should be used when handling these HBM Class 1A devices.

## Typical Performance Curves

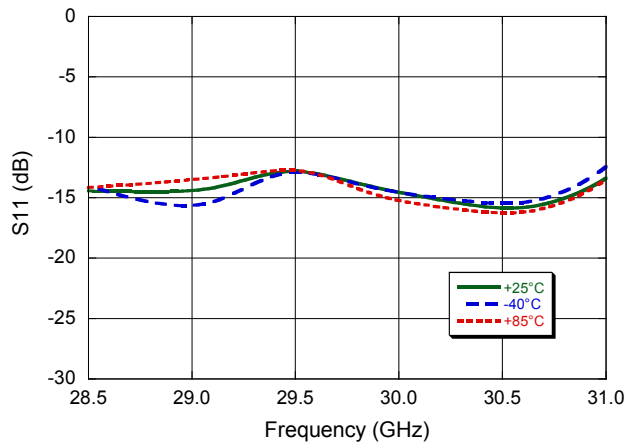
**Small Signal Gain vs. Frequency over Temperature**



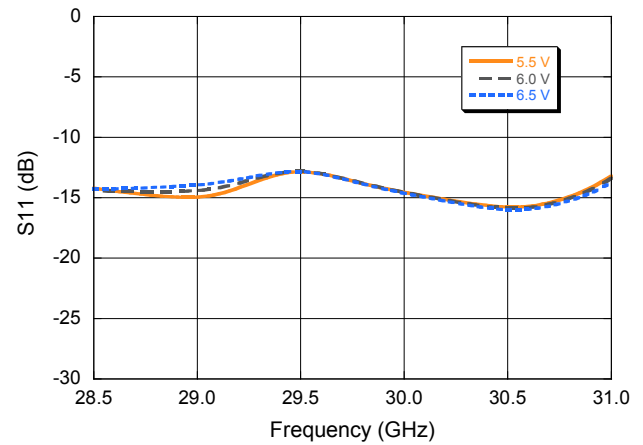
**Small Signal Gain vs. Frequency over Bias Voltage**



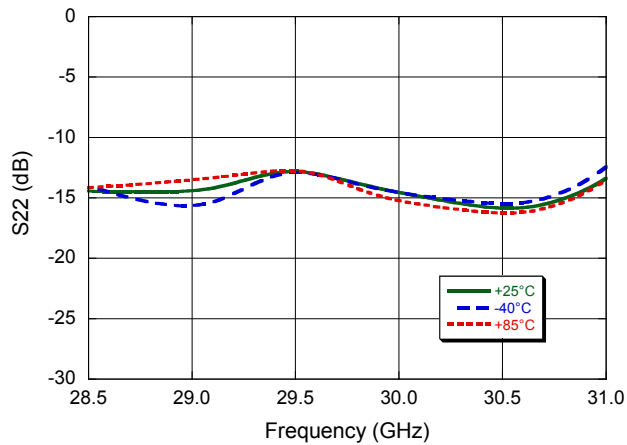
**Input Return Loss vs. Frequency over Temperature**



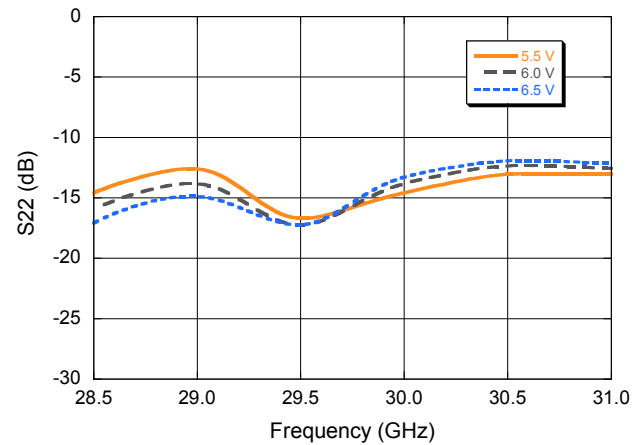
**Input Return Loss vs. Frequency over Bias Voltage**



**Output Return Loss vs. Frequency over Temperature**

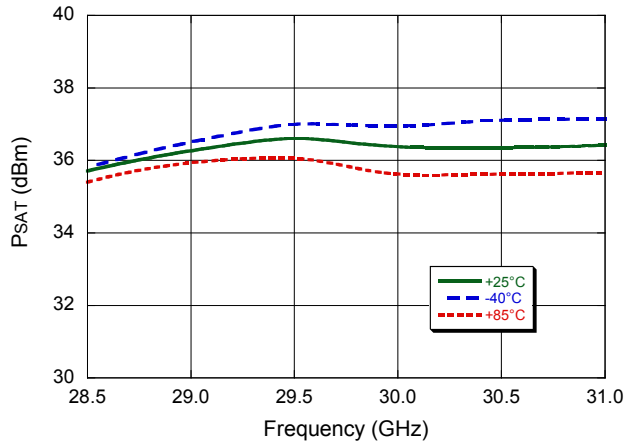


**Output Return Loss vs. Frequency over Bias Voltage**

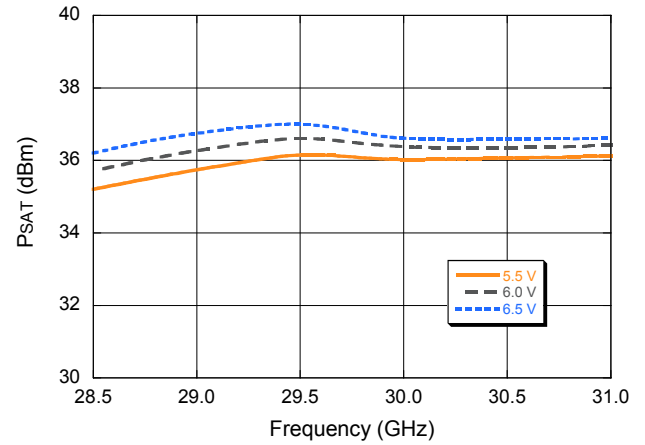


## Typical Performance Curves

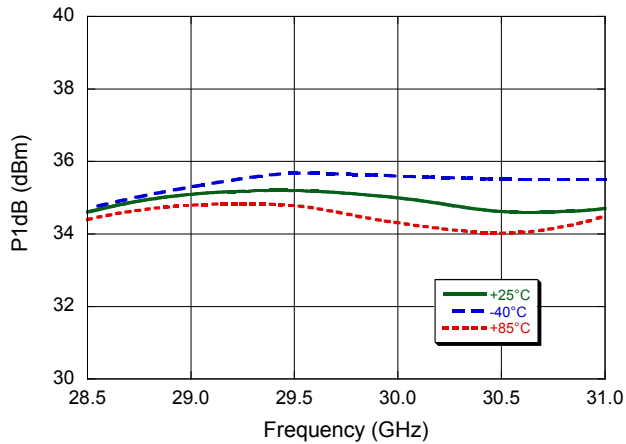
*P<sub>SAT</sub> vs. Frequency over Temperature*



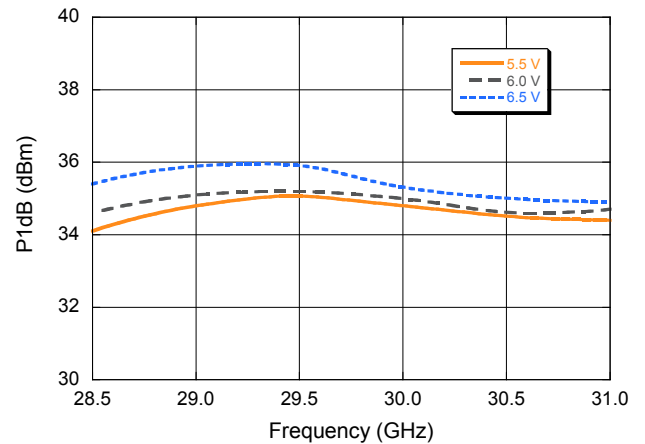
*P<sub>SAT</sub> vs. Frequency over Bias Voltage*



*P1dB vs. Frequency over Temperature*

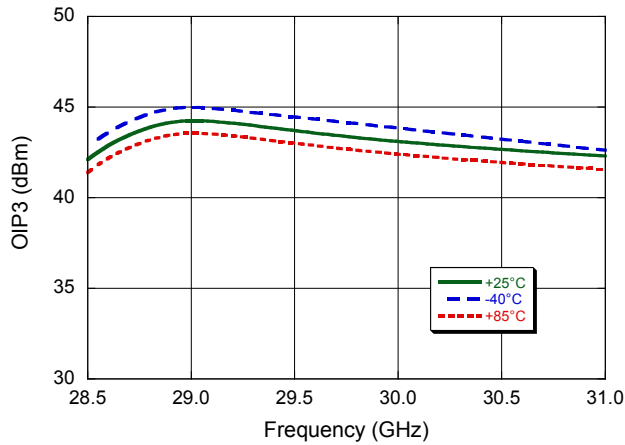


*P1dB vs. Frequency over Bias Voltage*

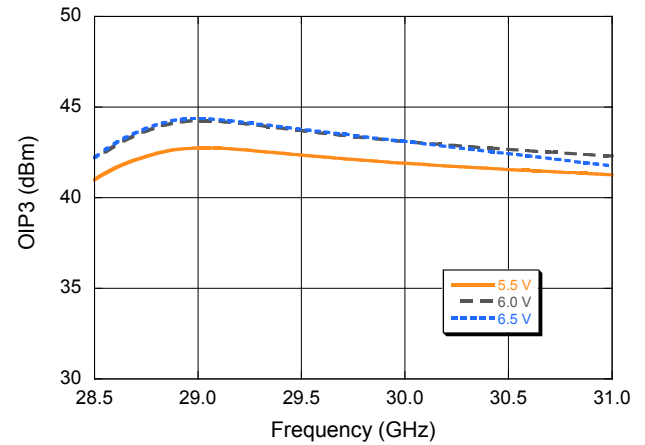


## Typical Performance Curves

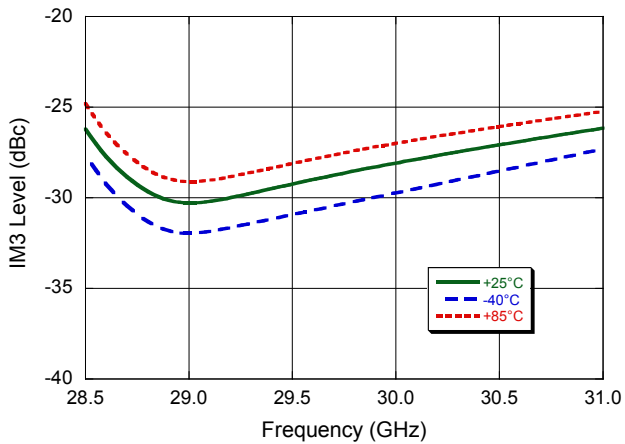
**Output IP3 over Temperature (Pout=29 dBm/tone)**



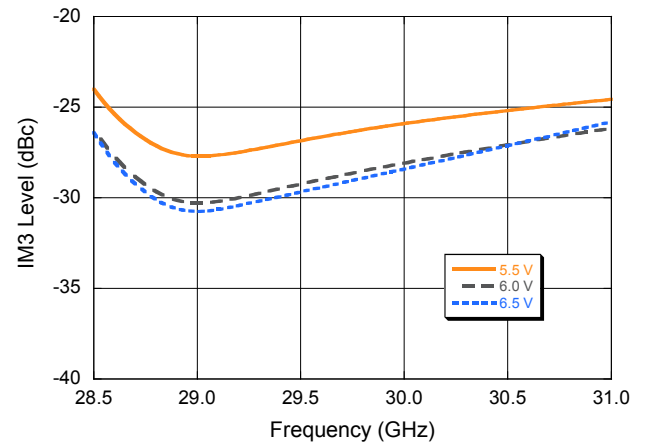
**Output IP3 over Bias Voltage (Pout=29 dBm/Tone)**



**IM3 over Temperature (Pout=29 dBm/tone)**



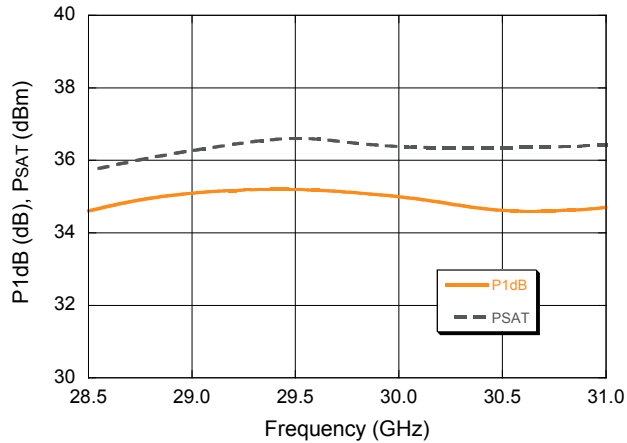
**IM3 over Bias Voltage (Pout=29 dBm/tone)**



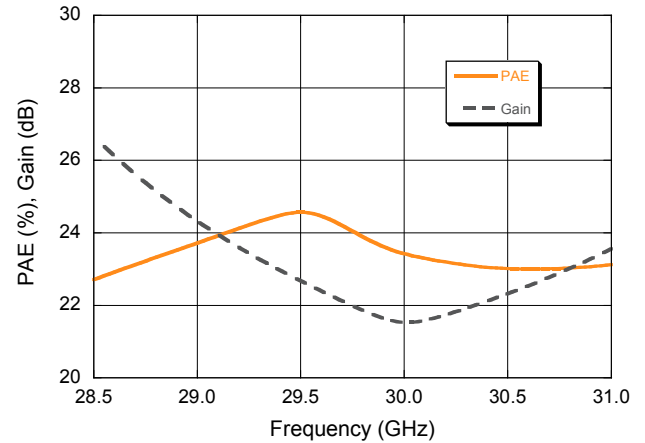


## Typical Performance Curves

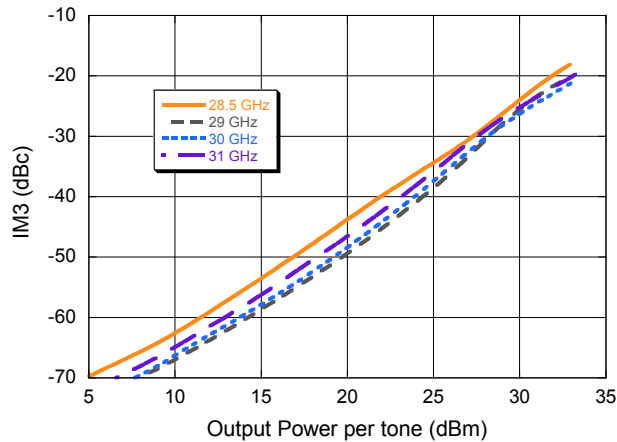
***P<sub>1dB</sub>, P<sub>SAT</sub> vs. Frequency***



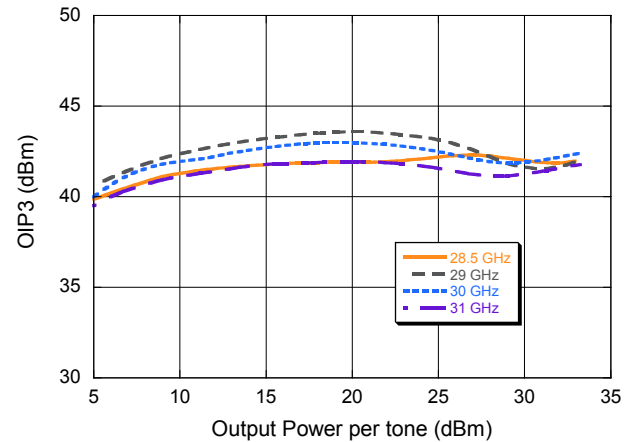
***PAE, Gain vs. Frequency***



***IM3 vs. Output Power (per tone)***

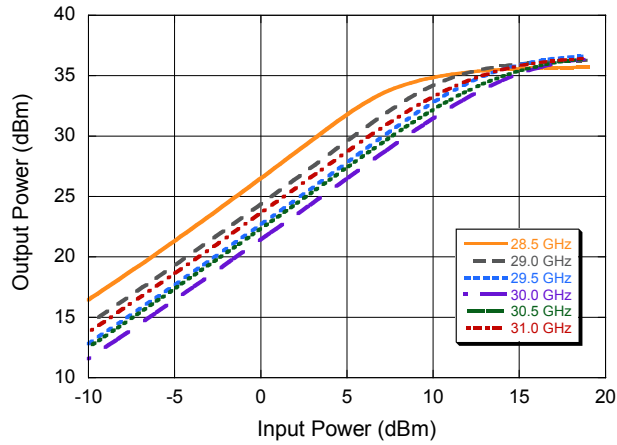


***Output IP3 vs. Output Power (per tone)***

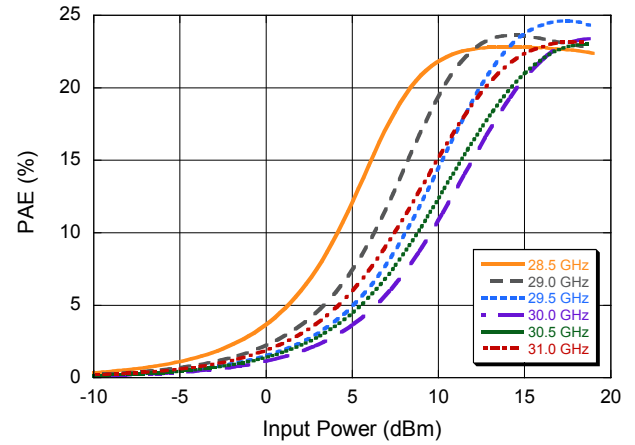


## Typical Performance Curves

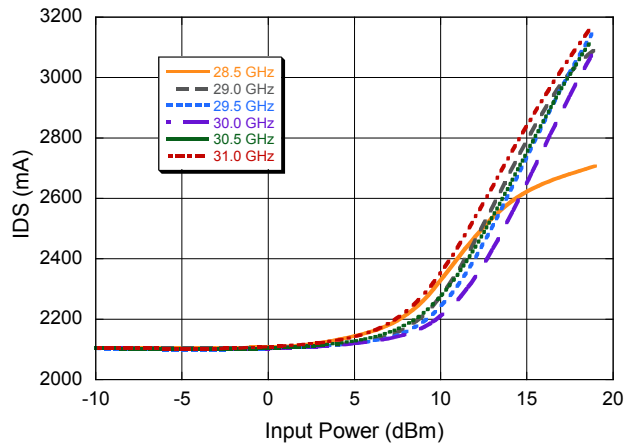
**Output Power vs. Input Power**



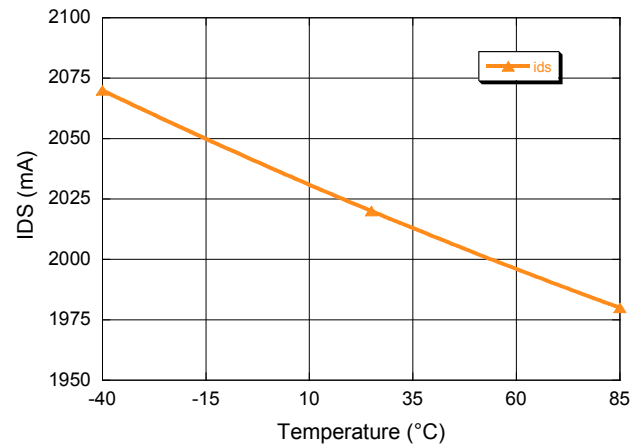
**PAE vs. Input Power**



**Bias Current vs. Input Power**



**Quiescent Drain Current vs. Temperature**





M/A-COM Technology Solutions Inc. All rights reserved.

Information in this document is provided in connection with M/A-COM Technology Solutions Inc ("MACOM") products. These materials are provided by MACOM as a service to its customers and may be used for informational purposes only. Except as provided in MACOM's Terms and Conditions of Sale for such products or in any separate agreement related to this document, MACOM assumes no liability whatsoever. MACOM assumes no responsibility for errors or omissions in these materials. MACOM may make changes to specifications and product descriptions at any time, without notice. MACOM makes no commitment to update the information and shall have no responsibility whatsoever for conflicts or incompatibilities arising from future changes to its specifications and product descriptions. No license, express or implied, by estoppel or otherwise, to any intellectual property rights is granted by this document.

THESE MATERIALS ARE PROVIDED "AS IS" WITHOUT WARRANTY OF ANY KIND, EITHER EXPRESS OR IMPLIED, RELATING TO SALE AND/OR USE OF MACOM PRODUCTS INCLUDING LIABILITY OR WARRANTIES RELATING TO FITNESS FOR A PARTICULAR PURPOSE, CONSEQUENTIAL OR INCIDENTAL DAMAGES, MERCHANTABILITY, OR INFRINGEMENT OF ANY PATENT, COPYRIGHT OR OTHER INTELLECTUAL PROPERTY RIGHT. MACOM FURTHER DOES NOT WARRANT THE ACCURACY OR COMPLETENESS OF THE INFORMATION, TEXT, GRAPHICS OR OTHER ITEMS CONTAINED WITHIN THESE MATERIALS. MACOM SHALL NOT BE LIABLE FOR ANY SPECIAL, INDIRECT, INCIDENTAL, OR CONSEQUENTIAL DAMAGES, INCLUDING WITHOUT LIMITATION, LOST REVENUES OR LOST PROFITS, WHICH MAY RESULT FROM THE USE OF THESE MATERIALS.

MACOM products are not intended for use in medical, lifesaving or life sustaining applications. MACOM customers using or selling MACOM products for use in such applications do so at their own risk and agree to fully indemnify MACOM for any damages resulting from such improper use or sale.



Компания «ЭлектроПласт» предлагает заключение долгосрочных отношений при поставках импортных электронных компонентов на взаимовыгодных условиях!

Наши преимущества:

- Оперативные поставки широкого спектра электронных компонентов отечественного и импортного производства напрямую от производителей и с крупнейших мировых складов;
- Поставка более 17-ти миллионов наименований электронных компонентов;
- Поставка сложных, дефицитных, либо снятых с производства позиций;
- Оперативные сроки поставки под заказ (от 5 рабочих дней);
- Экспресс доставка в любую точку России;
- Техническая поддержка проекта, помощь в подборе аналогов, поставка прототипов;
- Система менеджмента качества сертифицирована по Международному стандарту ISO 9001;
- Лицензия ФСБ на осуществление работ с использованием сведений, составляющих государственную тайну;
- Поставка специализированных компонентов (Xilinx, Altera, Analog Devices, Intersil, Interpoint, Microsemi, Aeroflex, Peregrine, Syfer, Eurofarad, Texas Instrument, Miteq, Cobham, E2V, MA-COM, Hittite, Mini-Circuits, General Dynamics и др.);

Помимо этого, одним из направлений компании «ЭлектроПласт» является направление «Источники питания». Мы предлагаем Вам помощь Конструкторского отдела:

- Подбор оптимального решения, техническое обоснование при выборе компонента;
- Подбор аналогов;
- Консультации по применению компонента;
- Поставка образцов и прототипов;
- Техническая поддержка проекта;
- Защита от снятия компонента с производства.



#### Как с нами связаться

**Телефон:** 8 (812) 309 58 32 (многоканальный)

**Факс:** 8 (812) 320-02-42

**Электронная почта:** [org@eplast1.ru](mailto:org@eplast1.ru)

**Адрес:** 198099, г. Санкт-Петербург, ул. Калинина, дом 2, корпус 4, литера А.