

# TRADITIONAL HIGH-SPEED FUSES

150/250/500/600/700 Vac • Very Fast-Acting • 1-1200 A



## Specifications

### Voltage Ratings

|       |  |
|-------|--|
| L15S: | 150 Vac/dc (1 – 60 A)<br>150 Vac (70 – 1000 A)<br>100 Vdc (70 – 1000 A)  |
| L25S: | 250 Vac/dc (1 – 200 A)<br>250 Vac (225 – 800 A)<br>200 Vdc (225 – 800 A) |
| L50S: | 500 Vac/450 Vdc  |
| L60S: | 600 Vac  |
| KLC:  | 600 Vac  |
| L70S: | 700 Vac/650 Vdc  |

L25S series fuses are Littelfuse Certified for DC ratings shown in Rating Table.

### Interrupting Rating

|     |                                    |
|-----|------------------------------------|
| AC: | 200 kA rms<br>(L15S series 100 kA) |
| DC: | 20 kA                              |

Ampere Range 1 – 1200 A See Rating Table for ratings available in each series.

Approvals UL Recognized (File: E71611)  
CSA Recognized (File: LR29862)

## Recommended Fuse Holders

|                       |     |
|-----------------------|-----|
| 1LFS101/1LFS102 ..... | 121 |
| LSCR001/LSCR002 ..... | 120 |

## Web Resources

For additional information, visit:  
[littelfuse.com/high-speed](http://littelfuse.com/high-speed)

## Ordering Information

| AMPERE RATINGS | SERIES ORDERING NUMBER |         |         |          |                  |         |
|----------------|------------------------|---------|---------|----------|------------------|---------|
|                | L15S                   | L25S    | L50S    | L60S     | KLC <sup>†</sup> | L70S    |
| 1              | L15S001                | L25S001 | –       | L60S001  | KLC001           | –       |
| 2              | L15S002                | L25S002 | –       | L60S002  | KLC002           | –       |
| 3              | L15S003                | L25S003 | –       | L60S003  | KLC003           | –       |
| 4              | L15S004                | L25S004 | –       | L60S004  | KLC004           | –       |
| 5              | L15S005                | L25S005 | –       | L60S005  | KLC005           | –       |
| 6              | L15S006                | L25S006 | –       | L60S006  | KLC006           | –       |
| 7              | L15S007                | –       | –       | –        | KLC007           | –       |
| 8              | L15S008                | L25S008 | –       | L60S008  | KLC008           | –       |
| 9              | L15S009                | –       | –       | –        | –                | –       |
| 10             | L15S010                | L25S010 | L50S010 | L60S010  | KLC010           | L70S010 |
| 12             | L15S012                | L25S012 | L50S012 | L60S012  | KLC012           | –       |
| 15             | L15S015                | L25S015 | L50S015 | L60S015  | KLC015           | L70S015 |
| 17½            | –                      | –       | –       | L60S17.5 | KLC17.5          | –       |
| 20             | L15S020                | L25S020 | L50S020 | L60S020  | KLC020           | L70S020 |
| 25             | L15S025                | L25S025 | L50S025 | L60S025  | KLC025           | L70S025 |
| 30             | L15S030                | L25S030 | L50S030 | L60S030  | KLC030           | L70S030 |
| 35             | L15S035                | L25S035 | L50S035 | L60S035  | KLC035           | L70S035 |
| 40             | L15S040                | L25S040 | L50S040 | L60S040  | KLC040           | L70S040 |
| 45             | L15S045                | L25S045 | –       | L60S045  | KLC045           | –       |
| 50             | L15S050                | L25S050 | L50S050 | L60S050  | KLC050           | L70S050 |
| 60             | L15S060                | L25S060 | L50S060 | L60S060  | KLC060           | L70S060 |
| 70             | L15S070                | L25S070 | L50S070 | L60S070  | KLC070           | L70S070 |
| 80             | L15S080                | L25S080 | L50S080 | L60S080  | KLC080           | L70S080 |
| 90             | L15S090                | L25S090 | L50S090 | L60S090  | KLC090           | L70S090 |
| 100            | L15S100                | L25S100 | L50S100 | L60S100  | KLC100           | L70S100 |
| 110            | –                      | –       | –       | –        | KLC110           | –       |
| 125            | L15S125                | L25S125 | L50S125 | L60S125  | KLC125           | L70S125 |
| 150            | L15S150                | L25S150 | L50S150 | L60S150  | KLC150           | L70S150 |
| 175            | –                      | L25S175 | L50S175 | L60S175  | KLC175           | L70S175 |
| 200            | L15S200                | L25S200 | L50S200 | L60S200  | KLC200           | L70S200 |
| 225            | –                      | L25S225 | L50S225 | L60S225  | KLC225           | L70S225 |
| 250            | L15S250                | L25S250 | L50S250 | L60S250  | KLC250           | L70S250 |
| 275            | –                      | L25S275 | L50S275 | –        | –                | –       |
| 300            | L15S300                | L25S300 | L50S300 | L60S300  | KLC300           | L70S300 |
| 350            | L15S350                | L25S350 | L50S350 | L60S350  | KLC350           | L70S350 |
| 400            | L15S400                | L25S400 | L50S400 | L60S400  | KLC400           | L70S400 |
| 450            | L15S450                | L25S450 | L50S450 | L60S450  | KLC450           | L70S450 |
| 500            | L15S500                | L25S500 | L50S500 | L60S500  | KLC500           | L70S500 |
| 550            | –                      | –       | L50S550 | –        | –                | –       |
| 600            | L15S600                | L25S600 | L50S600 | L60S600  | KLC600           | L70S600 |
| 700            | –                      | L25S700 | L50S700 | L60S700  | KLC700           | L70S700 |
| 800            | L15S800                | L25S800 | L50S800 | L60S800  | KLC800           | L70S800 |
| 900            | –                      | –       | –       | –        | –                | –       |
| 1000           | L15S1000               | –       | –       | –        | –                | –       |
| 1200           | –                      | –       | –       | –        | –                | –       |

<sup>†</sup> KLC series fuses are recommended for replacement use only.

*Note: High-Speed fuses are designed for fixed installations. They are not intended for use in moving vehicle applications.*

# TRADITIONAL HIGH-SPEED FUSES

## Dimensions



| AMPERE RATING                         | FIG. NO. | DIMENSIONS INCHES (mm) |            |            |            |           |             |           |                          |
|---------------------------------------|----------|------------------------|------------|------------|------------|-----------|-------------|-----------|--------------------------|
|                                       |          | A                      | B          | C          | D          | E         | F           | G         | H                        |
| <b>L15S Series, 150 Vac</b>           |          |                        |            |            |            |           |             |           |                          |
| 1 – 30                                | 1        | 1½ (38.1)              | —          | ¾ (9.5)    | 1⅜ (10.3)  | —         | —           | —         | —                        |
| 31 – 60                               | 1        | 2 (50.8)               | —          | ⅝ (15.9)   | 1⅜ (20.6)  | —         | —           | —         | —                        |
| 61 – 450                              | 3        | 1⅝ (29.4)              | 1⅞ (47.6)  | 2⅜ (55.6)  | 2⅜ (67.5)  | 1 (25.4)  | 4⅜ (17.1)   | ⅝ (7.9)   | ⅜ (4.8)                  |
| 451 – 1000                            | 3        | 1¼ (31.8)              | 1⅝ (49.2)  | 2⅞ (65.1)  | 3½ (88.9)  | 1½ (38.1) | 1 (25.4)    | 1⅜ (10.3) | ¼ (6.4)                  |
| <b>L25S Series, 250 Vac</b>           |          |                        |            |            |            |           |             |           |                          |
| 1 – 30                                | 1        | 2 (50.8)               | —          | ½ (12.7)   | ⅞ (14.3)   | —         | —           | —         | —                        |
| 31 – 60                               | 2        | 1⅝ (41.3)              | 2¼ (57.2)  | 2½ (63.5)  | 3⅜ (81.0)  | 1⅜ (20.6) | 2⅜ (18.3)   | 1⅜ (8.7)  | ⅝ (3.2)                  |
| 61 – 200                              | 3        | 1⅝ (41.3)              | 2⅝ (58.7)  | 2⅞ (61.9)  | 3⅞ (79.4)  | 1⅜ (31.0) | 1 (25.4)    | ⅝ (7.9)   | ⅜ (4.8)                  |
| 201 – 700                             | 3        | 1⅞ (40.5)              | 2⅞ (57.9)  | 2⅞ (73.8)  | 3⅜ (97.6)  | 1½ (38.1) | 1 (25.4)    | 1⅜ (10.3) | ¼ (6.4)                  |
| 701 – 800                             | 3        | 1⅞ (40.5)              | 2⅞ (57.9)  | 2⅞ (73.8)  | 3⅜ (97.6)  | 2 (50.8)  | 1½ (38.1)   | 1⅜ (10.3) | ¼ (6.4)                  |
| <b>L50S Series, 500 Vac / 450 Vdc</b> |          |                        |            |            |            |           |             |           |                          |
| 10 – 30                               | 1        | 2 (50.8)               | —          | ½ (12.7)   | ⅞ (14.3)   | —         | —           | —         | —                        |
| 31 – 60                               | 2        | 1⅝ (41.3)              | 2¼ (57.2)  | 2½ (63.5)  | 3⅜ (81.0)  | 1⅜ (20.6) | 2⅜ (18.3)   | 1⅜ (8.7)  | ⅝ (3.2)                  |
| 61 – 100                              | 3        | 2⅞ (54.0)              | 2⅞ (68.3)  | 3 (76.2)   | 3⅝ (92.1)  | 1 (25.4)  | .670 (17.0) | 1⅜ (8.7)  | ⅝ (3.2)                  |
| 101 – 200                             | 3        | 2⅞ (54.0)              | 2⅞ (68.3)  | 2⅞ (74.6)  | 3⅝ (92.1)  | 1⅜ (31.0) | .895 (22.7) | ⅝ (7.9)   | ⅜ (4.75)                 |
| 201 – 400                             | 3        | 2⅞ (53.2)              | 2⅞ (70.6)  | 3⅜ (86.5)  | 4⅜ (110.3) | 1½ (38.1) | 1 (25.4)    | 1⅜ (10.3) | ¼ (6.4)                  |
| 401 – 600                             | 3        | 2⅞ (56.4)              | 2⅞ (73.8)  | 3⅜ (89.7)  | 4⅜ (113.5) | 2 (50.8)  | 1½ (38.1)   | 1⅜ (10.3) | ¼ (6.4)                  |
| 601 – 800                             | 3        | 2⅞ (56.4)              | 4⅞ (108.7) | 4⅞ (117.5) | 6⅜ (164.3) | 2½ (63.5) | 2 (50.8)    | 1⅜ (13.5) | ⅝ (9.5)                  |
| <b>L60S Series, 600 Vac</b>           |          |                        |            |            |            |           |             |           |                          |
| 1 – 30                                | 1        | 5 (127.0)              | —          | ⅝ (15.9)   | 1⅜ (20.6)  | —         | —           | —         | —                        |
| 31 – 60                               | 2        | 2⅞ (70.6)              | 3⅞ (87.3)  | 3⅞ (93.7)  | 4⅜ (111.1) | 1⅜ (20.6) | 2⅜ (18.3)   | 1⅜ (8.7)  | ⅝ (3.2)                  |
| 61 – 100                              | 2        | 2⅞ (73.8)              | 3⅞ (89.7)  | 3⅞ (96.0)  | 4⅜ (113.5) | 1⅜ (27.0) | 2⅜ (18.3)   | 1⅜ (8.7)  | ⅝ (3.2)                  |
| 101 – 200                             | 2        | 2⅞ (73.8)              | 3⅞ (90.5)  | 3⅞ (95.3)  | 4⅜ (111.9) | 1⅜ (33.3) | 1 (25.4)    | ⅝ (7.9)   | ⅜ (4.8)                  |
| 201 – 400                             | 2        | 2⅞ (73.8)              | 3⅞ (100.8) | 4⅜ (105.6) | 5⅞ (130.2) | 1⅜ (40.1) | 1 (25.4)    | 1⅜ (10.3) | ¼ (6.4)                  |
| 401 – 600                             | 2        | 2⅞ (73.0)              | 3⅞ (100.8) | 4⅞ (105.2) | 5⅞ (130.2) | 2⅞ (52.8) | 1½ (38.1)   | 1⅜ (10.3) | ¼ (6.4)                  |
| 601 – 800                             | 2        | 3⅞ (77.0)              | 5⅞ (133.4) | 5⅞ (135.7) | 7¼ (184.2) | 2½ (63.5) | 2 (50.8)    | 1⅜ (13.5) | ⅝ (9.5)                  |
| <b>L70S Series, 700 Vac / 650 Vdc</b> |          |                        |            |            |            |           |             |           |                          |
| 10 – 30                               | 1        | 2 (50.8)               | —          | ½ (12.7)   | ⅞ (14.3)   | —         | —           | —         | —                        |
| 31 – 60                               | 2        | 2⅞ (73.0)              | 3⅞ (87.3)  | 3⅞ (95.3)  | 4⅜ (111.1) | 1 (25.4)  | 4⅜ (17.1)   | 1⅜ (8.7)  | ⅝ (3.2)                  |
| 61 – 100                              | 2        | 2⅞ (73.0)              | 3⅞ (90.5)  | 3⅞ (93.7)  | 4⅜ (111.1) | 1⅜ (31.0) | 2⅜ (22.9)   | ⅝ (7.9)   | ⅜ (4.8)                  |
| 101 – 200                             | 2        | 2⅞ (72.2)              | 3⅞ (89.7)  | 4⅜ (105.6) | 5⅞ (129.4) | 1½ (38.1) | 1 (25.4)    | 1⅜ (10.3) | ¼ (6.4)                  |
| 201 – 400                             | 2        | 2⅞ (72.2)              | 3⅞ (89.7)  | 4⅜ (105.6) | 5⅞ (129.4) | 2 (50.8)  | 1½ (38.1)   | 1⅜ (10.3) | ¼ (6.4)                  |
| 401 – 600                             | 2        | 2⅞ (72.2)              | 4⅞ (124.6) | 5¼ (133.4) | 7⅜ (180.2) | 2½ (63.5) | 2 (50.8)    | 1⅜ (13.5) | ⅝ (9.5)                  |
| 601 – 800                             | 4        | 3⅞ (84.1)              | 5⅞ (134.9) | 6⅜ (173.0) | —          | 2⅞ (73.0) | 2 (50.8)    | ⅝ (15.9)  | H: ⅝ (9.5)<br>J: ⅝ (7.9) |
| <b>KLC Series, 600 Vac</b>            |          |                        |            |            |            |           |             |           |                          |
| 1 – 30                                | 2        | 1⅞ (47.6)              | 2½ (63.5)  | —          | 2⅞ (73.0)  | ⅞ (14.3)  | 1⅜ (10.3)   | ¼ (6.4)   | ⅜ (1.2)                  |
| 31 – 60                               | 2        | 2⅞ (69.9)              | 3⅞ (85.7)  | 3⅞ (92.1)  | 4⅜ (109.5) | 1⅜ (20.6) | 2⅜ (18.3)   | 1⅜ (8.7)  | ⅝ (3.2)                  |
| 61 – 100                              | 3        | 2⅞ (73.0)              | 3⅞ (92.9)  | 4⅞ (103.2) | 5 (127.0)  | 1 (25.4)  | ¾ (19.1)    | 1⅜ (10.3) | ⅝ (3.2)                  |
| 101 – 200                             | 3        | 2⅞ (72.2)              | 3⅞ (89.7)  | 4⅞ (111.1) | 5⅞ (129.4) | 1½ (38.1) | 1 (25.4)    | 1⅜ (10.3) | ¼ (6.4)                  |
| 201 – 400                             | 3        | 2⅞ (72.2)              | 4⅞ (118.3) | 4⅞ (123.0) | 6¼ (158.8) | 2 (50.8)  | 1⅝ (41.3)   | ⅞ (14.3)  | ¼ (6.4)                  |
| 401 – 800                             | 3        | 2⅞ (72.2)              | 4⅞ (118.3) | 5⅞ (135.7) | 6¼ (158.8) | 2½ (63.5) | 2 (50.8)    | ⅞ (14.3)  | ⅝ (9.5)                  |

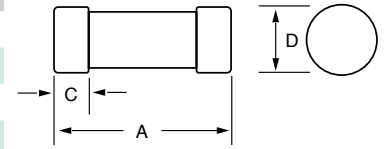


Fig. 1

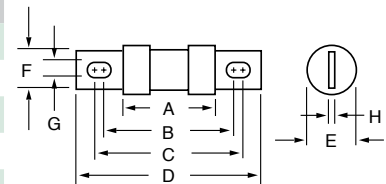


Fig. 2

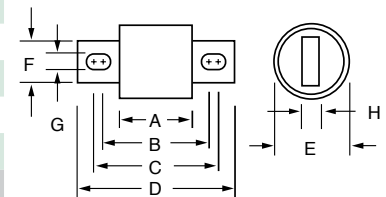


Fig. 3

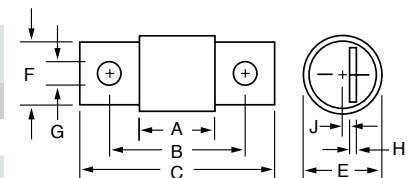


Fig. 4

Note: High-Speed fuses are designed for fixed installations. They are not intended for use in moving vehicle applications.

# LA15QS ALTERNATE DIMENSION HIGH-SPEED FUSES

150 VAC • Very Fast-Acting • 1-6000 A



## LA15QS Series

| AMPERE RATING | CATALOG NUMBER | MOUNTING TYPE | MAXIMUM CLEARING I <sup>2</sup> t @ 150 Vac (A <sup>2</sup> s x 10 <sup>3</sup> ) | WATTS LOSS @ RATED CURRENT (W) |
|---------------|----------------|---------------|---|--------------------------------|
| 1             | LA15QS1-2      | 2             | 0.0002  | 0.68                           |
| 3             | LA15QS3-2      | 2             | 0.003   | 1.7                            |
| 4             | LA15QS4-2      | 2             | 0.007   | 2.1                            |
| 5             | LA15QS5-2      | 2             | 0.012   | 2.8                            |
| 6             | LA15QS6-2      | 2             | 0.022   | 3.1                            |
| 7             | LA15QS7-2      | 2             | 0.011   | 2.2                            |
| 8             | LA15QS8-2      | 2             | 0.015   | 2.5                            |
| 10            | LA15QS10-2     | 2             | 0.019   | 2.6                            |
| 12            | LA15QS12-2     | 2             | 0.030   | 3                              |
| 15            | LA15QS15-2     | 2             | 0.042   | 3                              |
| 25            | LA15QS25-2     | 2             | 0.14  | 5.2                            |
| 30            | LA15QS30-2     | 2             | 0.25  | 5.6                            |
| 35            | LA15QS35-1     | 1             | 0.21  | 9                              |
| 40            | LA15QS40-1     | 1             | 0.28  | 10                             |
| 40            | LA15QS40-4TI   | 4TI           | 0.39  | 3.1                            |
| 45            | LA15QS45-1     | 1             | 0.34  | 12                             |
| 50            | LA15QS50-1     | 1             | 0.47  | 13                             |
| 50            | LA15QS50-4     | 4             | 0.64  | 4                              |
| 55            | LA15QS55-1     | 1             | Contact Factory   | Contact Factory                |
| 60            | LA15QS60-1     | 1             | 0.94  | 14                             |
| 70            | LA15QS70-4     | 4             | 2   | 5.6                            |
| 70            | LA15QS70-4TI   | 4TI           | 2   | 5.6                            |
| 80            | LA15QS80-4     | 4             | 2.5   | 8                              |
| 80            | LA15QS80-4TI   | 4TI           | 2.5   | 8                              |
| 90            | LA15QS90-4     | 4             | 3.1   | 9                              |
| 100           | LA15QS100-4    | 4             | 3.6   | 10                             |
| 100           | LA15QS100-4TI  | 4TI           | 3.6   | 10                             |
| 130           | LA15QS130-4    | 4             | 5.3   | 14                             |
| 130           | LA15QS130-4TI  | 4TI           | 5.3   | 14                             |
| 150           | LA15QS150-4    | 4             | 6.8   | 16                             |
| 150           | LA15QS150-4IL  | 4IL           | 6.8   | 16                             |
| 150           | LA15QS150-4TI  | 4TI           | 6.8   | 16                             |
| 200           | LA15QS200-4    | 4             | 9   | 22                             |
| 200           | LA15QS200-4IL  | 4IL           | 9   | 22                             |

| AMPERE RATING | CATALOG NUMBER   | MOUNTING TYPE | MAXIMUM CLEARING I <sup>2</sup> t @ 150 Vac (A <sup>2</sup> s x 10 <sup>3</sup> ) | WATTS LOSS @ RATED CURRENT (W) |
|---------------|------------------|---------------|---|--------------------------------|
| 250           | LA15QS250-4      | 4             | 15  | 22                             |
| 250           | LA15QS250-4TI    | 4TI           | 15  | 27                             |
| 300           | LA15QS300-4      | 4             | 22  | 33                             |
| 300           | LA15QS300-4IL    | 4IL           | 22  | 33                             |
| 300           | LA15QS300-4TL    | 4TI           | 22  | 33                             |
| 350           | LA15QS350-4      | 4             | 32  | 40                             |
| 350           | LA15QS350-4TI    | 4TI           | 32  | 40                             |
| 400           | LA15QS400-4      | 4             | 40  | 45                             |
| 400           | LA15QS400-4IL    | 4IL           | 40  | 45                             |
| 400           | LA15QS400-4TI    | 4TI           | 40  | 45                             |
| 450           | LA15QS450-4      | 4             | 50  | 50                             |
| 450           | LA15QS450-4IL    | 4IL           | 50  | 50                             |
| 500           | LA15QS500-4      | 4             | 90  | 30                             |
| 500           | LA15QS500-4IL    | 4IL           | 90  | 30                             |
| 600           | LA15QS600-4      | 4             | 130   | 35                             |
| 600           | LA15QS600-4IL    | 4IL           | 130   | 35                             |
| 800           | LA15QS800-4      | 4             | 290   | 57                             |
| 1000          | LA15QS1000-4     | 4             | 520   | 75                             |
| 1000          | LA15QS1000-4IL   | 4IL           | 520   | 75                             |
| 1000          | LA15QS1000-4TI   | 4TI           | 520   | 75                             |
| 1000          | LA15QS1000-128   | 128           | 540   | 88                             |
| 1000          | LA15QS1000-128IL | 128IL         | 540   | 88                             |
| 1200          | LA15QS1200-128   | 128           | 680   | 100                            |
| 1200          | LA15QS1200-128IL | 128IL         | 680   | 100                            |
| 1500          | LA15QS1500-128   | 128           | 1200  | 130                            |
| 1500          | LA15QS1500-128IL | 128IL         | 1200  | 130                            |
| 2000          | LA15QS2000-128   | 128           | 1900  | 165                            |
| 2000          | LA15QS2000-128IL | 128IL         | 1900  | 165                            |
| 2500          | LA15QS2500-128   | 128           | 3200  | 195                            |
| 2500          | LA15QS2500-128IL | 128IL         | 3200  | 195                            |
| 3000          | LA15QS3000-128   | 128           | 4800  | 240                            |
| 3000          | LA15QS3000-128IL | 128IL         | 4800  | 240                            |
| 3500          | LA15QS3500-128   | 128           | 6500  | 260                            |
| 4000          | LA15QS4000-128   | 128           | 8500  | 270                            |
| 4000          | LA15QS4000-128IL | 128IL         | 8500  | 270                            |
| 5000          | LA15QS5000-128   | 128           | Contact Factory   | Contact Factory                |
| 6000          | LA15QS6000-128   | 128           | Contact Factory   | Contact Factory                |

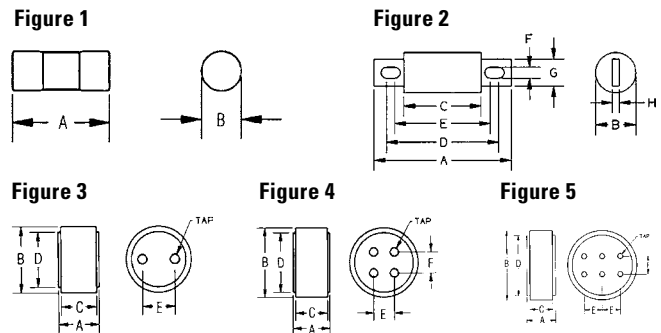
## Specifications

|                            |                        |
|----------------------------|------------------------|
| <b>Voltage Rating</b>      | AC: 150 V<br>DC: 150 V |
| <b>Interrupting Rating</b> | 100 kA                 |
| <b>Ampere Range</b>        | 1 – 6000 A             |
| <b>Approvals</b>           | UL Recognized          |

## Web Resources

For additional information, visit: [littelfuse.com/la15qs](http://littelfuse.com/la15qs)

## Dimensions



Dimensions for reference only.

| AMPERE RATINGS | MOUNTING TYPE | FIGURE NO. | DIMENSIONS INCHES (mm) |             |             |             |             |             |             |            | TAP |                 |
|----------------|---------------|------------|------------------------|-------------|-------------|-------------|-------------|-------------|-------------|------------|-----|-----------------|
|                |               |            | A                      | B           | C           | D           | E           | F           | G           | H          |     |                 |
| 1 – 30         | 2             | 1          | 1.50 (38.1)            | 0.41 (10.4) | –           | –           | –           | –           | –           | –          | –   | –               |
| 35 – 60        | 1             | 1          | 2.00 (50.8)            | 0.81 (20.6) | –           | –           | –           | –           | –           | –          | –   | –               |
| 40 – 450       | 4, 4TI*, 4IL* | 2          | 2.66 (67.6)            | 1.13 (28.7) | 1.16 (29.5) | 2.19 (55.6) | 1.91 (48.5) | 0.31 (7.9)  | 0.88 (22.4) | 0.19 (4.8) | –   | –               |
| 500 – 1000     | 4, 4TI*, 4IL* | 2          | 3.50 (88.9)            | 1.50 (38.1) | 1.25 (31.8) | 2.56 (65.0) | 1.94 (49.3) | 0.41 (10.4) | 1.00 (25.4) | 0.25 (6.4) | –   | –               |
| 750 – 2000     | 128, 128IL*   | 3          | 1.88 (47.9)            | 2.00 (50.8) | 1.63 (41.4) | 1.75 (44.5) | 1.00 (25.4) | –           | –           | –          | –   | 3/8-24-1/2 deep |
| 2500 – 3000    | 128, 128IL*   | 3          | 1.88 (47.9)            | 3.00 (76.2) | 1.63 (41.4) | 2.50 (63.5) | 1.50 (38.1) | –           | –           | –          | –   | 1/2-20-1/2 deep |
| 3500 – 4000    | 128, 128IL*   | 4          | 1.88 (47.9)            | 3.50 (88.9) | 1.63 (41.4) | 3.00 (76.2) | 1.06 (27.0) | 1.06 (27.0) | –           | –          | –   | 1/2-20-1/2 deep |
| 5000 – 6000    | 128           | 5          | 2.38 (60.5)            | 5.75 (146)  | 1.88 (47.7) | 5.00 (127)  | 1.50 (38.1) | 1.50 (38.1) | –           | –          | –   | 1/2-20-1/2 deep |

\*Optional Trigger Actuator (IL). Optional Trigger Indicator (TI) see web for dimensions.

**Note:** High-Speed fuses are designed for fixed installations. They are not intended for use in moving vehicle applications.

# LA30QS ALTERNATE DIMENSION HIGH-SPEED FUSES

300 VAC • Very Fast-Acting • 35-4500 A

## LA30QS Series



| AMPERE RATING | CATALOG NUMBER | MOUNTING TYPE | MAXIMUM CLEARING I <sup>2</sup> t @300 VAC (A <sup>2</sup> s X 10 <sup>3</sup> ) | WATTS LOSS @ RATED CURRENT (W) |
|---------------|----------------|---------------|--|--------------------------------|
| 35            | LA30QS35-4     | 4             | 0.9  | 6.4                            |
| 40            | LA30QS40-4     | 4             | 1.2  | 7                              |
| 50            | LA30QS50-4     | 4             | 2  | 9.9                            |
| 60            | LA30QS60-4     | 4             | 2.7  | 11.6                           |
| 70            | LA30QS70-4     | 4             | 1.6  | 11                             |
| 80            | LA30QS80-4     | 4             | 2.6  | 11                             |
| 90            | LA30QS90-4     | 4             | 3.2  | 13                             |
| 100           | LA30QS100-4    | 4             | 4.1  | 13                             |
| 100           | LA30QS100-4TI  | 4TI           | 4.1  | 13                             |
| 125           | LA30QS125-4    | 4             | 6.3  | 16                             |
| 130           | LA30QS130-4    | 4             | 6.3  | 16                             |
| 150           | LA30QS150-4    | 4             | 9.3  | 19                             |
| 150           | LA30QS150-4TI  | 4TI           | 9.3  | 19                             |
| 175           | LA30QS175-4    | 4             | 10   | 27                             |
| 200           | LA30QS200-4    | 4             | 15   | 30                             |
| 200           | LA30QS200-4TI  | 4TI           | 15   | 30                             |
| 225           | LA30QS225-4    | 4             | 22   | 33                             |
| 250           | LA30QS250-4    | 4             | 25   | 41                             |
| 250           | LA30QS250-4TI  | 4TI           | 25   | 41                             |
| 300           | LA30QS300-4    | 4             | 37   | 47                             |
| 300           | LA30QS300-4TI  | 4TI           | 37   | 47                             |
| 350           | LA30QS350-4    | 4             | 62   | 49                             |
| 400           | LA30QS400-4    | 4             | 83   | 56                             |
| 400           | LA30QS400-4IL  | 4IL           | 83   | 56                             |
| 400           | LA30QS400-4TI  | 4TI           | 83   | 56                             |
| 450           | LA30QS450-4    | 4             | 130  | 53                             |

| AMPERE RATING | CATALOG NUMBER   | MOUNTING TYPE | MAXIMUM CLEARING I <sup>2</sup> t @300 VAC (A <sup>2</sup> s X 10 <sup>3</sup> ) | WATTS LOSS @ RATED CURRENT (W) |
|---------------|------------------|---------------|--|--------------------------------|
| 500           | LA30QS500-4      | 4             | 160  | 59                             |
| 550           | LA30QS550-4      | 4             | 190  | 65                             |
| 600           | LA30QS600-4      | 4             | 230  | 69                             |
| 600           | LA30QS600-4TI    | 4TI           | 230  | 69                             |
| 600           | LA30QS600-4IL    | 4IL           | 230  | 69                             |
| 700           | LA30QS700-4      | 4             | 260  | 90                             |
| 700           | LA30QS700-128    | 128           | 260  | 73                             |
| 800           | LA30QS800-4      | 4             | 330  | 108                            |
| 800           | LA30QS800-4IL    | 4IL           | 330  | 108                            |
| 800           | LA30QS800-128    | 128           | 330  | 84                             |
| 1000          | LA30QS1000-128   | 128           | 460  | 105                            |
| 1000          | LA30QS1000-128IL | 128IL         | 460  | 105                            |
| 1200          | LA30QS1200-128   | 128           | 880  | 110                            |
| 1500          | LA30QS1500-128   | 128           | 1400   | 140                            |
| 1500          | LA30QS1500-128IL | 128IL         | 1400   | 140                            |
| 1600          | LA30QS1600-128   | 128           | 1690   | 150                            |
| 2000          | LA30QS2000-128   | 128           | 2600   | 190                            |
| 2000          | LA30QS2000-128IL | 128IL         | 2600   | 190                            |
| 2500          | LA30QS2500-128   | 128           | 4000   | 230                            |
| 2500          | LA30QS2500-128IL | 128IL         | 4000   | 230                            |
| 3000          | LA30QS3000-128   | 128           | 4700   | 340                            |
| 3500          | LA30QS3500-128   | 128           | 6500   | 380                            |
| 3500          | LA30QS3500-128IL | 128IL         | 6500   | 380                            |
| 4000          | LA30QS4000-128   | 128           | 8600   | 450                            |
| 4500          | LA30QS4500-128   | 128           | 11000  | 500                            |

### Description

Littelfuse LA30QS series High-Speed protection fuses are intended for the protection of Power Semiconductors such as diodes, phase control SCR's and other power high-speed devices. The LA30QS is recommended for new applications providing solutions for your critical protection needs for 300V and less semiconductors.

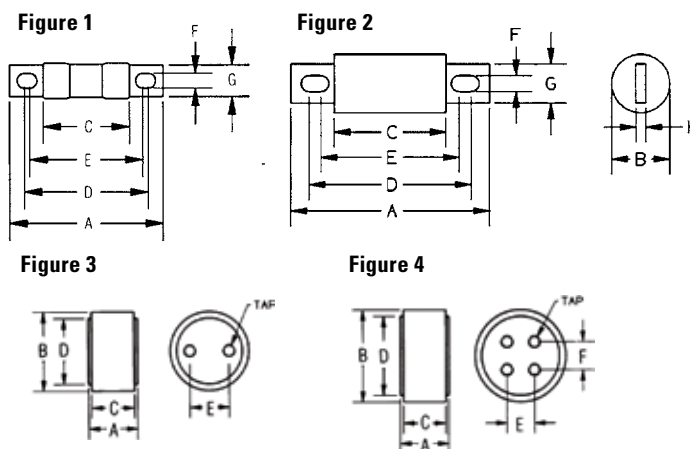
### Specifications

|                            |                        |
|----------------------------|------------------------|
| <b>Voltage Rating</b>      | AC: 300 V<br>DC: 300 V |
| <b>Interrupting Rating</b> | 200 kA                 |
| <b>Ampere Range</b>        | 35 – 4500 A            |
| <b>Approvals</b>           | UL Recognized          |

### Web Resources

For additional information, visit: [littelfuse.com/la30qs](http://littelfuse.com/la30qs)

### Dimensions



Dimensions for reference only.

| AMPERE RATING | MOUNTING TYPE | FIGURE NO. | DIMENSIONS INCHES (mm) |             |             |             |             |             |             |            | TAP             |
|---------------|---------------|------------|------------------------|-------------|-------------|-------------|-------------|-------------|-------------|------------|-----------------|
|               |               |            | A                      | B           | C           | D           | E           | F           | G           | H          |                 |
| 35 – 60       | 4             | 1          | 3.19 (81.0)            | 0.81 (20.6) | 1.63 (41.4) | 2.50 (63.5) | 2.25 (57.5) | 0.34 (8.6)  | 0.72 (18.3) | 0.13 (3.3) | –               |
| 70 – 200      | 4             | 2          | 3.13 (79.5)            | 1.22 (31.0) | 1.63 (41.4) | 2.44 (62.0) | 2.31 (58.7) | 0.31 (7.9)  | 1.00 (25.4) | 0.19 (4.8) | –               |
| 225 – 800     | 4, 4IL*       | 2          | 3.84 (97.5)            | 1.50 (38.1) | 1.59 (40.1) | 2.91 (73.9) | 2.28 (57.9) | 0.41 (10.4) | 1.00 (25.4) | 0.25 (6.4) | –               |
| 800 – 1200    | 128           | 3          | 2.59 (65.8)            | 3.00 (76.2) | 2.34 (59.4) | 2.50 (63.5) | 1.50 (38.1) | –           | –           | –          | 3/8-24-1/2 deep |
| 1500 – 2500   | 128, 128IL*   | 4          | 2.59 (65.8)            | 3.50 (88.9) | 2.34 (59.4) | 3.00 (76.2) | 1.50 (38.1) | 1.50 (38.1) | –           | –          | 3/8-24-1/2 deep |
| 3000 – 4500   | 128, 128IL*   | 4          | 2.59 (65.8)            | 4.50 (114)  | 2.34 (59.4) | 3.75 (95.3) | 1.50 (38.1) | 1.50 (38.1) | –           | –          | 1/2-20-1/2 deep |

\*Optional Trigger Actuator (IL). Optional Trigger Indicator (TI) see web for dimensions.

Note: High-Speed fuses are designed for fixed installations. They are not intended for use in moving vehicle applications.

# LA50QS ALTERNATE DIMENSION HIGH-SPEED FUSES

500 VAC • Very Fast-Acting • 35-1200 A



## LA50QS Series

| AMPERE RATING | CATALOG NUMBER | MOUNTING TYPE | MAXIMUM CLEARING I <sup>2</sup> t @ 500 VAC (A <sup>2</sup> s X 10 <sup>3</sup> ) | WATTS LOSS @ RATED CURRENT (W) |
|---------------|----------------|---------------|---|--------------------------------|
| 35            | LA50QS35-4     | 4             | 0.56  | 6                              |
| 40            | LA50QS40-4     | 4             | 0.69  | 7                              |
| 50            | LA50QS50-4     | 4             | 1.1   | 8                              |
| 60            | LA50QS60-4     | 4             | 1.6   | 10                             |
| 70            | LA50QS70-4     | 4             | 1.9   | 12                             |
| 80            | LA50QS80-4     | 4             | 2.6   | 14                             |
| 90            | LA50QS90-4     | 4             | 3.6   | 15                             |
| 100           | LA50QS100-4    | 4             | 4.4   | 17                             |
| 125           | LA50QS125-4    | 4             | 5.6   | 21                             |
| 150           | LA50QS150-4    | 4             | 9   | 25                             |
| 175           | LA50QS175-4    | 4             | 15  | 29                             |
| 200           | LA50QS200-4    | 4             | 20  | 33                             |
| 225           | LA50QS225-4    | 4             | 25  | 37                             |
| 250           | LA50QS250-4    | 4             | 29  | 41                             |
| 300           | LA50QS300-4    | 4             | 55  | 49                             |
| 350           | LA50QS350-4    | 4             | 88  | 57                             |
| 400           | LA50QS400-4    | 4             | 98  | 65                             |
| 450           | LA50QS450-4    | 4             | 130   | 69                             |
| 500           | LA50QS500-4    | 4             | 160   | 77                             |
| 600           | LA50QS600-4    | 4             | 220   | 92                             |
| 700           | LA50QS700-4    | 4             | 270   | 110                            |
| 800           | LA50QS800-4    | 4             | 360   | 130                            |
| 900           | LA50QS900-4    | 4             | 500   | 140                            |
| 1000          | LA50QS1000-4   | 4             | 560   | 160                            |
| 1200          | LA50QS1200-4   | 4             | 930   | 175                            |

## Description

Littelfuse LA50QS series fuses were developed to improve the overall performance of high-speed fuses. The LA50QS provides the high performance protection characteristics including lower I<sup>2</sup>t, longer life when subjected to cyclic loading and lower watts loss. LA50QS is the leading choice for the protection of dynamic solid state equipment.

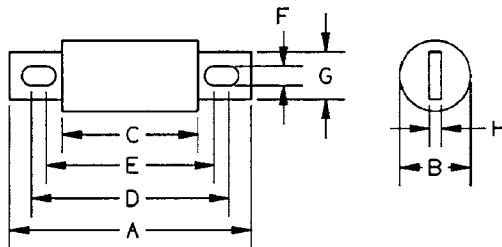
## Specifications

|                            |                                |
|----------------------------|--------------------------------|
| <b>Voltage Rating</b>      | AC: 500 V<br>DC: 500 V         |
| <b>Interrupting Rating</b> | AC: 200 kA<br>DC: 100 kA       |
| <b>Ampere Range</b>        | 35 – 1200 A                    |
| <b>Approvals</b>           | UL Recognized<br>CSA Certified |

## Web Resources

For additional information, visit: [littelfuse.com/la50qs](http://littelfuse.com/la50qs)

## Dimensions



Dimensions for reference only.

| AMPERE RATING | MOUNTING TYPE | DIMENSIONS INCHES (mm) |                |                |                 |                 |                |                |                |
|---------------|---------------|------------------------|----------------|----------------|-----------------|-----------------|----------------|----------------|----------------|
|               |               | A                      | B              | C              | D               | E               | F              | G              | H              |
| 35 – 100      | 4             | 3.63<br>(92.2)         | 1.00<br>(25.4) | 2.13<br>(54.1) | 2.94<br>(74.7)  | 2.75<br>(69.9)  | 0.31<br>(7.9)  | 0.75<br>(19.1) | 0.13<br>(3.3)  |
| 125 – 200     | 4             | 3.63<br>(92.2)         | 1.22<br>(31.0) | 2.13<br>(54.1) | 2.94<br>(74.7)  | 2.81<br>(71.4)  | 0.31<br>(7.9)  | 1.00<br>(25.4) | 0.19<br>(4.8)  |
| 225 – 400     | 4             | 4.34<br>(110)          | 1.50<br>(38.1) | 2.09<br>(53.1) | 3.41<br>(86.6)  | 2.78<br>(70.6)  | 0.41<br>(10.4) | 1.00<br>(25.4) | 0.25<br>(6.4)  |
| 450 – 600     | 4             | 4.47<br>(114)          | 2.00<br>(50.8) | 2.22<br>(56.4) | 3.53<br>(89.7)  | 2.91<br>(73.9)  | 0.41<br>(10.4) | 1.50<br>(38.1) | 0.25<br>(6.4)  |
| 700 – 800     | 4             | 6.47<br>(164.3)        | 2.50<br>(63.5) | 2.22<br>(56.4) | 5.00<br>(127.0) | 3.44<br>(87.3)  | 0.53<br>(13.5) | 1.50<br>(38.1) | 0.25<br>(6.4)  |
| 900 – 1200    | 4             | 6.97<br>(177.0)        | 3.00<br>(76.2) | 3.22<br>(81.8) | 5.47<br>(138.9) | 4.47<br>(113.5) | 0.63<br>(15.9) | 2.38<br>(60.3) | 0.44<br>(11.1) |

Contact Littelfuse for characteristic curves.

**Note:** High-Speed fuses are designed for fixed installations. They are not intended for use in moving vehicle applications.

# ALTERNATE DIMENSION HIGH-SPEED FUSES

600 Vac/dc • Very Fast-Acting • 5-40 A



## LA60Q Series High-Speed Fuses

| AMPERE RATING | CATALOG NUMBER | MOUNTING TYPE | MAXIMUM CLEARING I <sup>2</sup> t @600 VAC (A <sup>2</sup> s) | WATTS LOSS @ RATED CURRENT (W) |
|---------------|----------------|---------------|---|--------------------------------|
| 5             | LA60Q5-2       | 2             | 60  | 0.7                            |
| 8             | LA60Q8-2       | 2             | 70  | 1.1                            |
| 10            | LA60Q10-2      | 2             | 110   | 1.6                            |
| 12            | LA60Q12-2      | 2             | 150   | 2                              |
| 15            | LA60Q15-2      | 2             | 180   | 3                              |
| 20            | LA60Q20-2      | 2             | 330   | 4.4                            |
| 25            | LA60Q25-2      | 2             | 440   | 5.5                            |
| 30            | LA60Q30-2      | 2             | 860   | 5.6                            |
| 35            | LA60Q35-2      | 2             | 1300  | 6.4                            |
| 40            | LA60Q40-2      | 2             | 1800  | 7                              |

### Specifications

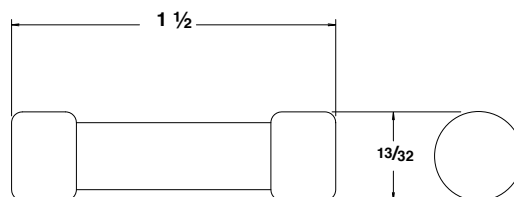
|                            |                          |
|----------------------------|--------------------------|
| <b>Voltage Rating</b>      | AC: 600 V<br>DC: 600 V   |
| <b>Interrupting Rating</b> | AC: 200 kA<br>DC: 100 kA |
| <b>Ampere Range</b>        | 5 – 40 A                 |
| <b>Approvals</b>           | UL Recognized            |

Contact Littelfuse for characteristic curves.

### Description

Littelfuse LA60Q high-speed protection fuses feature a 600 volt ac/dc rating in a compact size (1 1/2" x 13/32"). LA60Q also has the lowest I<sup>2</sup>t of all similar fuses and excellent cycling ability. Applications include inverters and small equipment requiring extremely fast response to faults, without the need to carry sustained heavy overloads.

### Dimensions Inches



### Web Resources

For additional information, visit: [littelfuse.com/la60q](http://littelfuse.com/la60q)

690 Vac/700 Vdc • Very Fast-Acting • 10-100 A



## LA70QSF Series French Cylindrical Fuses

| AMPERE RATING | CATALOG NUMBER (NO STRIKER) | CATALOG NUMBER (WITH STRIKER) | BODY SIZE | MAXIMUM CLEARING I <sup>2</sup> t @700 VAC (A <sup>2</sup> s X 10 <sup>3</sup> ) | WATTS LOSS @ RATED CURRENT (W) |
|---------------|-----------------------------|-------------------------------|-----------|--|--------------------------------|
| 10            | LA70QS10-14F                | LA70QS10-14FI                 | 14 x 51   | 0.04   | 3.5                            |
| 12            | LA70QS12-14F                | LA70QS12-14FI                 | 14 x 51   | 0.06   | 4.4                            |
| 16            | LA70QS16-14F                | LA70QS16-14FI                 | 14 x 51   | 0.10   | 4.8                            |
| 20            | LA70QS20-14F                | LA70QS20-14FI                 | 14 x 51   | 0.16   | 5.2                            |
| 25            | LA70QS25-14F                | LA70QS25-14FI                 | 14 x 51   | 0.27   | 5.8                            |
| 32            | LA70QS32-14F                | LA70QS32-14FI                 | 14 x 51   | 1.50   | 7.0                            |
| 40            | LA70QS40-14F                | LA70QS40-14FI                 | 14 x 51   | 0.70   | 10.7                           |
| 50            | LA70QS50-14F                | LA70QS50-14FI                 | 14 x 51   | 1.50   | 11.6                           |
| 20            | LA70QS20-22F                | LA70QS20-22FI                 | 22 x 58   | 0.076  | 8.0                            |
| 25            | LA70QS25-22F                | LA70QS25-22FI                 | 22 x 58   | 0.125  | 10.0                           |
| 32            | LA70QS32-22F                | LA70QS32-22FI                 | 22 x 58   | 0.27   | 11.0                           |
| 40            | LA70QS40-22F                | LA70QS40-22FI                 | 22 x 58   | 0.48   | 13.0                           |
| 50            | LA70QS50-22F                | LA70QS50-22FI                 | 22 x 58   | 0.80   | 14.9                           |
| 63            | LA70QS63-22F                | LA70QS63-22FI                 | 22 x 58   | 1.85   | 16.0                           |
| 80            | LA70QS80-22F                | LA70QS80-22FI                 | 22 x 58   | 3.80   | 17.8                           |
| 100           | LA70QS100-22F               | LA70QS100-22FI                | 22 x 58   | 8.00   | 19.0                           |

### Specifications

|                            |                                |
|----------------------------|--------------------------------|
| <b>Voltage Rating</b>      | AC: 690 V<br>DC: 700 V         |
| <b>Interrupting Rating</b> | AC: 200 kA<br>DC: 100 kA       |
| <b>Ampere Range</b>        | 10 – 100 A                     |
| <b>Approvals</b>           | UL Recognized<br>CSA Certified |

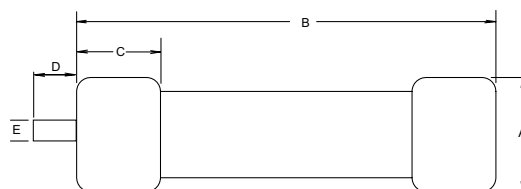
### Description

Littelfuse French Cylindrical style high-speed fuses are an extension to the LA70QS series. They offer a solid-fill design with high interrupting ratings and an optional striker for visual or remote blown fuse indication.

### Web Resources

For additional information, visit: [littelfuse.com/semi](http://littelfuse.com/semi)

### Dimensions



| FUSE SIZE     | DIMENSIONS mm |    |    |     |     |
|---------------|---------------|----|----|-----|-----|
|               | A             | B  | C  | D   | E   |
| 14x51         | 14            | 51 | 14 | –   | –   |
| 22x58         | 22            | 58 | 16 | –   | –   |
| 14x51 Striker | 14            | 51 | 14 | 7.5 | 3.8 |
| 22x58 Striker | 22            | 58 | 16 | 7.5 | 3.8 |

Note: High-Speed fuses are designed for fixed installations. They are not intended for use in moving vehicle applications.



# LA70QS ALTERNATE DIMENSION HIGH-SPEED FUSES

700 VAC/VDC • Very Fast-Acting • 35-800 A



## LA70QS Series High-Speed Fuses

| AMPERE RATING | CATALOG NUMBER | MOUNTING TYPE | MAXIMUM CLEARING I <sup>2</sup> t @700 VAC (A <sup>2</sup> s X 10 <sup>3</sup> ) | WATTS LOSS @ RATED CURRENT (W) |
|---------------|----------------|---------------|--|--------------------------------|
| 35            | LA70QS35-4     | 4             | 0.47   | 6.2                            |
| 40            | LA70QS40-4     | 4             | 0.58   | 7.5                            |
| 50            | LA70QS50-4     | 4             | 0.86   | 9.8                            |
| 60            | LA70QS60-4     | 4             | 1.2  | 12                             |
| 70            | LA70QS70-4     | 4             | 1.8  | 15                             |
| 80            | LA70QS80-4     | 4             | 2.3  | 18                             |
| 90            | LA70QS90-4     | 4             | 3  | 20                             |
| 100           | LA70QS100-4    | 4             | 3.6  | 24                             |
| 125           | LA70QS125-4    | 4             | 6.9  | 22                             |
| 125           | LA70QS125-4K   | 4K            | 6.9  | 22                             |
| 150           | LA70QS150-4    | 4             | 11   | 29                             |
| 150           | LA70QS150-4K   | 4K            | 11   | 29                             |
| 175           | LA70QS175-4    | 4             | 14   | 35                             |
| 175           | LA70QS175-4K   | 4K            | 14   | 35                             |
| 200           | LA70QS200-4    | 4             | 19   | 41                             |
| 200           | LA70QS200-4K   | 4             | 19   | 41                             |
| 250           | LA70QS250-4    | 4             | 42   | 42                             |
| 300           | LA70QS300-4    | 4             | 55   | 53                             |
| 350           | LA70QS350-4    | 4             | 72   | 64                             |
| 400           | LA70QS400-4    | 4             | 99   | 75                             |
| 450           | LA70QS450-4    | 4             | 125  | 78                             |
| 450           | LA70QS450-4K   | 4K            | 125  | 78                             |
| 500           | LA70QS500-4    | 4             | 160  | 92                             |
| 500           | LA70QS500-4K   | 4K            | 160  | 92                             |
| 600           | LA70QS600-4    | 4             | 222  | 116                            |
| 600           | LA70QS600-4K   | 4K            | 222  | 116                            |
| 700           | LA70QS700-4    | 4             | 332  | 125                            |
| 800           | LA70QS800-4    | 4             | 433  | 143                            |

## Description

Littelfuse LA70QS high-speed fuses were developed to provide improved performance required by today's new equipment. The LA70QS features lower I<sup>2</sup>t, improved cycling, and lower watts loss. It is the best choice for the protection of dynamic solid-state equipment.

## Features/Benefits

- I<sup>2</sup>t improved protection of equipment.
- Superior cycling ability for long, reliable life on high cycling loading.
- Lower watts loss for cooler operation.
- 700 Volt ac/dc rating provides greater design versatility
- Compact sizes allow downsizing of equipment

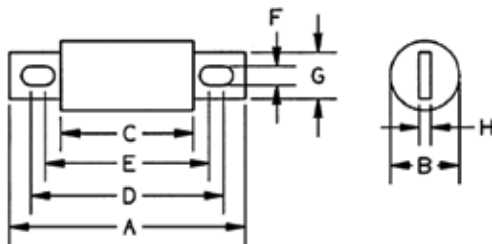
## Specifications

|                            |                                |
|----------------------------|--------------------------------|
| <b>Voltage Rating</b>      | AC: 700 V<br>DC: 700 V         |
| <b>Interrupting Rating</b> | AC: 200 kA<br>DC: 100 kA       |
| <b>Ampere Range</b>        | 35 – 800 A                     |
| <b>Approvals</b>           | UL Recognized<br>CSA Certified |

## Web Resources

For additional information, visit: [littelfuse.com/la70qs](http://littelfuse.com/la70qs)

## Dimensions



Dimensions for reference only.

| AMPERES   | MOUNTING TYPE | DIMENSIONS INCHES (mm) |             |             |             |             |             |             |            |
|-----------|---------------|------------------------|-------------|-------------|-------------|-------------|-------------|-------------|------------|
|           |               | A                      | B           | C           | D           | E           | F           | G           | H          |
| 35 – 100  | 4             | 4.38 (111)             | 1.00 (25.4) | 2.88 (73)   | 3.69 (93.6) | 3.50 (88.9) | 0.31 (7.9)  | 0.75 (19.0) | 0.13 (3.2) |
| 125 – 200 | 4             | 4.38 (111)             | 1.22 (31.0) | 2.88 (73)   | 3.69 (93.6) | 3.56 (90.5) | 0.31 (7.9)  | 1.00 (25.4) | 0.19 (4.8) |
| 125 – 200 | 4K            | 5.09 (129)             | 1.22 (31.0) | 2.88 (73)   | 4.19 (106)  | 3.50 (88)   | 0.41 (10.3) | 1.00 (25.4) | 0.19 (4.8) |
| 225 – 400 | 4             | 5.09 (129)             | 1.50 (38.1) | 2.84 (72.2) | 4.16 (106)  | 3.53 (89.7) | 0.40 (10.3) | 1.50 (38.1) | 0.25 (6.4) |
| 450 – 600 | 4             | 5.09 (129)             | 2.00 (50.8) | 2.84 (72.2) | 4.16 (106)  | 3.53 (89.7) | 0.41 (10.3) | 1.50 (38.1) | 0.25 (6.4) |
| 450 – 600 | 4K            | 7.09 (180)             | 2.00 (50.8) | 2.84 (72.2) | 6.16 (156)  | 3.53 (89.7) | 0.53 (13.5) | 1.50 (38.1) | 0.25 (6.4) |
| 700 – 800 | 4             | 7.09 (180)             | 2.50 (63.5) | 2.84 (72.2) | 5.28 (134)  | 4.91 (125)  | 0.53 (13.5) | 2.00 (50.8) | 0.38 (9.5) |

Contact Littelfuse for characteristic curves.

*Note: High-Speed fuses are designed for fixed installations. They are not intended for use in moving vehicle applications.*

# LA100P ALTERNATE DIMENSION HIGH-SPEED FUSES

1000 VAC • Very Fast-Acting • 15-1000 A



## LA100P Series High-Speed Fuses

| AMPERE RATING | CATALOG NUMBER | MOUNTING TYPE | MAXIMUM CLEARING I <sup>2</sup> t @1000 Vac (A <sup>2</sup> s X 10 <sup>3</sup> ) | WATTS LOSS @ RATED CURRENT (W) |
|---------------|----------------|---------------|---|--------------------------------|
| 15            | LA100P15-1     | 1             | 0.6   | 3.4                            |
| 20            | LA100P20-1     | 1             | 0.8   | 5.9                            |
| 25            | LA100P25-1     | 1             | 1.3   | 9                              |
| 30            | LA100P30-1     | 1             | 1.5   | 12.8                           |
| 35            | LA100P35-4     | 4             | 2.2   | 7.3                            |
| 40            | LA100P40-4     | 4             | 2.9   | 8.3                            |
| 50            | LA100P50-4     | 4             | 4.5   | 11                             |
| 60            | LA100P60-4     | 4             | 6.5   | 13                             |
| 80            | LA100P80-4     | 4             | 12  | 14                             |
| 100           | LA100P100-4    | 4             | 18  | 18                             |
| 125           | LA100P125-4    | 4             | 28  | 23                             |
| 150           | LA100P150-4    | 4             | 41  | 28                             |
| 200           | LA100P200-4    | 4             | 72  | 36                             |
| 225           | LA100P225-4    | 4             | 91  | 40                             |
| 250           | LA100P250-4    | 4             | 110   | 46                             |
| 300           | LA100P300-4    | 4             | 160   | 55                             |
| 350           | LA100P350-4    | 4             | 220   | 65                             |
| 400           | LA100P400-4    | 4             | 290   | 70                             |
| 500           | LA100P500-4    | 4             | 450   | 90                             |
| 600           | LA100P600-4    | 4             | 650   | 110                            |
| 650           | LA100P650-4    | 4             | 780   | 120                            |
| 700           | LA100P700-4    | 4             | 880   | 125                            |
| 800           | LA100P800-4    | 4             | 1200  | 140                            |
| 1000          | LA100P1000-4   | 4             | 1900  | 190                            |

## Description

Littelfuse LA100P high-speed protection fuses are rated 1000 Vac, extending the range of protection for UPS systems, AC and DC drives, reduced voltage motor starters and similar applications where lower I<sup>2</sup>t and superior reliability are needed. With ratings from 15-1000 amperes, a wide range of high voltage applications can be served.

## Features/Benefits

- Low I<sup>2</sup>t minimizes damage to protected components on short-circuit.
- Controlled arc voltage reduces stress to circuit components during fuse clearing.

## Specifications

|                            |                         |
|----------------------------|-------------------------|
| <b>Voltage Rating</b>      | AC: 1000 V<br>DC: 750 V |
| <b>Interrupting Rating</b> | 100 kA                  |
| <b>Ampere Range</b>        | 15 – 1000 A             |
| <b>Approvals</b>           | UL Recognized           |

## Web Resources

For additional information, visit: [littelfuse.com/la100p](http://littelfuse.com/la100p)

## Dimensions

Figure 1

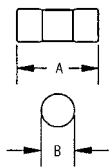


Figure 2

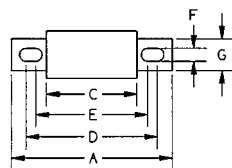


Figure 3

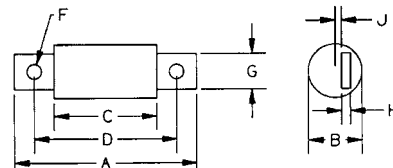
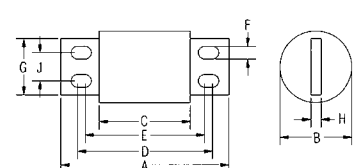


Figure 4



Dimensions for reference only.

| AMPERES   | MOUNTING TYPE | FIGURE NO. | DIMENSIONS INCHES (mm) |             |             |            |            |             |             |             |             |   |
|-----------|---------------|------------|------------------------|-------------|-------------|------------|------------|-------------|-------------|-------------|-------------|---|
|           |               |            | A                      | B           | C           | D          | E          | F           | G           | H           | J           |   |
| 15 – 30   | 1             | 1          | 2.53 (66.8)            | 0.56 (14.2) | -           | -          | -          | -           | -           | -           | -           | - |
| 35 – 60   | 4             | 2          | 5.00 (127)             | 1.00 (25.4) | 3.50 (88.9) | 4.31 (109) | 4.19 (106) | 0.31 (7.9)  | 0.75 (19.1) | 0.13 (3.3)  | -           | - |
| 65 – 100  | 4             | 2          | 5.00 (127)             | 1.22 (31)   | 3.50 (88.9) | 4.31 (109) | 4.19 (106) | 0.31 (7.9)  | 1.00 (25.4) | 0.19 (4.8)  | -           | - |
| 125 – 200 | 4             | 2          | 5.72 (145)             | 1.50 (38.1) | 3.47 (88.1) | 4.78 (121) | 4.16 (106) | 0.41 (10.4) | 1.00 (25.4) | 0.25 (6.4)  | -           | - |
| 225 – 400 | 4             | 2          | 5.72 (145)             | 2.00 (50.8) | 3.47 (88.1) | 4.78 (121) | 4.16 (106) | 0.41 (10.4) | 1.50 (25.4) | 0.25 (6.4)  | -           | - |
| 500 – 600 | 4             | 2          | 7.72 (196)             | 2.50 (63.5) | 3.47 (88.1) | 5.88 (149) | 5.56 (147) | 0.53 (13.5) | 2.00 (50.8) | 0.38 (9.7)  | -           | - |
| 650 – 800 | 4             | 3          | 7.44 (189)             | 2.88 (73.2) | 3.94 (100)  | 5.94 (151) | -          | 0.63 (16)   | 2.00 (50.8) | 0.38 (9.7)  | 0.31 (7.9)  | - |
| 1000      | 4             | 4          | 8.22 (209)             | 3.50 (88.9) | 4.47 (114)  | 6.59 (167) | 5.84 (148) | 0.63 (16)   | 2.75 (69.9) | 0.50 (12.7) | 1.38 (35.1) | - |

Optional Trigger Indicator (TI) for 50 A - 1000 A available  
Contact Littelfuse for characteristic curves.

*Note: High-Speed fuses are designed for fixed installations. They are not intended for use in moving vehicle applications.*





Компания «ЭлектроПласт» предлагает заключение долгосрочных отношений при поставках импортных электронных компонентов на взаимовыгодных условиях!

Наши преимущества:

- Оперативные поставки широкого спектра электронных компонентов отечественного и импортного производства напрямую от производителей и с крупнейших мировых складов;
- Поставка более 17-ти миллионов наименований электронных компонентов;
- Поставка сложных, дефицитных, либо снятых с производства позиций;
- Оперативные сроки поставки под заказ (от 5 рабочих дней);
- Экспресс доставка в любую точку России;
- Техническая поддержка проекта, помощь в подборе аналогов, поставка прототипов;
- Система менеджмента качества сертифицирована по Международному стандарту ISO 9001;
- Лицензия ФСБ на осуществление работ с использованием сведений, составляющих государственную тайну;
- Поставка специализированных компонентов (Xilinx, Altera, Analog Devices, Intersil, Interpoint, Microsemi, Aeroflex, Peregrine, Syfer, Eurofarad, Texas Instrument, Miteq, Cobham, E2V, MA-COM, Hittite, Mini-Circuits, General Dynamics и др.);

Помимо этого, одним из направлений компании «ЭлектроПласт» является направление «Источники питания». Мы предлагаем Вам помощь Конструкторского отдела:

- Подбор оптимального решения, техническое обоснование при выборе компонента;
- Подбор аналогов;
- Консультации по применению компонента;
- Поставка образцов и прототипов;
- Техническая поддержка проекта;
- Защита от снятия компонента с производства.



#### Как с нами связаться

**Телефон:** 8 (812) 309 58 32 (многоканальный)

**Факс:** 8 (812) 320-02-42

**Электронная почта:** [org@eplast1.ru](mailto:org@eplast1.ru)

**Адрес:** 198099, г. Санкт-Петербург, ул. Калинина, дом 2, корпус 4, литера А.