

## Interactive Catalog Supplements Catalog PDFs

If you need detailed product information, or help choosing the right product for your application, see our **Interactive Catalog**. Use the **Interactive Catalog** to access the most complete and up-to-date information available.

The **Interactive Catalog** provides an extensive collection of product specifications, application data, and technical literature that can be searched based on criteria you select.

This PDF catalog information was published in November 2000.



Sensing and Control  
**Interactive  
Catalog...**

**Click this icon to try  
the Interactive Catalog.**

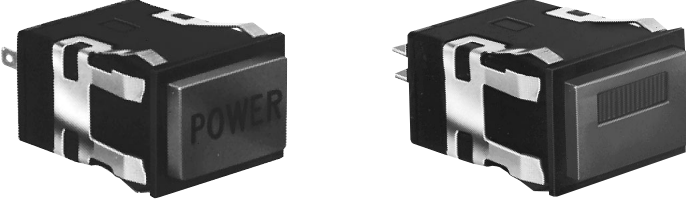
**Sensing and Control**  
Honeywell Inc.  
11 West Spring Street  
Freeport, IL 61032



# Manual Switches

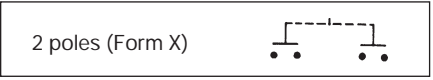
## Power Duty Pushbutton

INCANDESCENT, NEON, OR NON-LIGHTED DISPLAY



Buttons ordered separately.

### CONTACT ARRANGEMENT



Electrical Data	page 11
Buttons	page 30
Lamps and LEDs	page 46
Accessories	pages 44/45
Mounting Dimensions	page 48

### FEATURES

- UL recognized, CSA certified.
- AML31 lamp circuit independent of switch circuit.



\*AML31 Series: 2-pole.  
\*AML32 Series: 2-pole.

### AML31 ORDER GUIDE

AML31 accepts one incandescent lamp which can be furnished installed or ordered separately.

AML31 E	B	A	4	AC
<b>Housing Type</b> Standard Bezel: AML31E Rect. Non-Lighted AML31F Rect. 1 Lamp Ckt.  Full Guard Bezel: AML31K Rect. Non-Lighted AML31L Rect. 1 Lamp Ckt.	<b>Bezel Color</b> B Black	<b>Incandescent Lamp Type</b> A No Lamp Installed B 6 V Lamp* C 14 V Lamp* E 28 V Lamp*	<b>Terminal Type</b> 4 .187 × .020 (Solder or Quick-Connect)	<b>Circuitry Codes</b> 2-Pole, Single-Throw Normally-Open, Form X: AD AC Alt. Mom. Action Action

\* Lamps will be installed per each lamp circuit specified in the Housing Type.

Example: **AML31EBA4AC**

Rectangular pushbutton switch housing, non-lighted; black bezel; .187 × .020 terminals; momentary action; 2-pole, single-throw, normally open, Form X.

Manuals

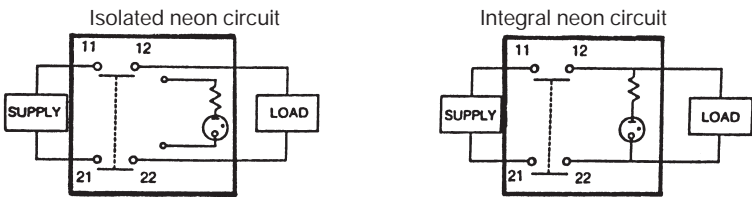
### AML32 ORDER GUIDE

AML32 has neon lamp wired to 125 or 250 VAC resistor.

AML32 F	B	C	7	AC
<b>Housing Type</b> Standard Bezel: AML32F Rect. 1 Neon Lamp  Full Guard Bezel: AML32L Rect. 1 Neon Lamp	<b>Bezel Color</b> B Black	<b>Neon Lamp Voltage/Color</b> Red B 125 VAC C 250 VAC  Clear K 125 VAC L 250 VAC  Green M 125 VAC P 250 VAC	<b>Terminal Type Lamp Circuit</b> 4 .187 × .020 (Solder or Quick-Connect) with isolated lamp circuit  7 .187 × .020 with integral lamp circuit	<b>Circuitry Codes</b> 2-Pole, Single-Throw Normally-Open, Form X: AD AC Alt. Mom. Action Action

Example: **AML32FBC7AC**

Rectangular pushbutton switch housing; black bezel; 250 volt, red neon lamp; .187 × .020 terminals with integral lamp circuit; momentary action; 2-pole, single-throw, normally open, Form X.

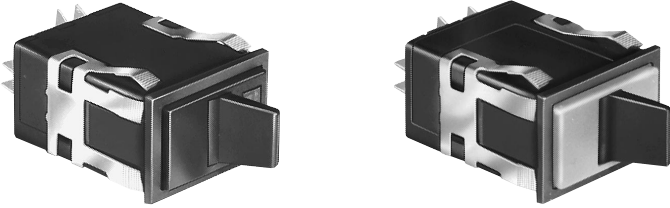


# Manual Switches

## Power Duty Paddle

AML33/35 Series

INCANDESCENT, NEON, OR NON-LIGHTED DISPLAY



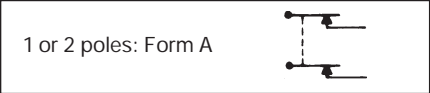
Colored housing covers ordered separately.

Electrical Data	page 11
Paddle Covers	page 35
Lamps	page 46
Mounting Dimensions	page 48

### FEATURES

- Toggle type paddle operators permanently installed in rectangular housings.
- 2-position maintained action.
- AML33 lamp circuit independent of switch circuit.
- UL recognized, CSA certified.

### CONTACT ARRANGEMENT



\*AML33 Series: 2-pole only.  
\*AML35 Series: 1-pole and 2-pole.

### AML33 ORDER GUIDE

AML33 accepts one incandescent lamp which can be furnished installed or ordered separately.

AML33 E	B	A	4	AA	01
<b>Housing Type</b>	<b>Operator/Bezel Color</b>	<b>Incandescent Lamp Type</b>	<b>Terminal Type</b>	<b>Circuitry Codes</b>	<b>Operating Action</b>
<b>AML33 E</b> Rectangular Non-Lighted  <b>AML33 F</b> Rectangular 1 Lamp Ckt.	<b>B</b> Black/Black  	<b>A</b> No Lamp Installed  <b>B</b> 6 V Lamp*  <b>C</b> 14 V Lamp*  <b>E</b> 28 V Lamp*	<b>4</b> .187 × .020 (Solder or Quick-Connect)	<b>Silver Contacts:</b> <b>AA</b> 1-Pole (One Form A Single-throw, Normally-Open)  <b>AC</b> 2-Pole (Two Form A)	 <b>01</b> Maint. ON    Maint. OFF

\* Lamps will be installed per each lamp circuit specified in the Housing Type.

### AML35 ORDER GUIDE

AML35 has neon lamp wired to 125 or 250 VAC resistor.

AML35 F	B	B	4	AA	01
<b>Housing Type</b>	<b>Operator/Bezel Color</b>	<b>Neon Lamp Voltage</b>	<b>Terminal Type/ Lamp Circuit †</b>	<b>Circuitry Codes</b>	<b>Operating Action</b>
<b>AML35 F</b> Rectangular 1 Neon Lamp	<b>B</b> Black/Black  	<b>Red B</b> 125 VAC  <b>C</b> 250 VAC  <b>Green M</b> 125 VAC  <b>P</b> 250 VAC	<b>4</b> .187 × .020 (Solder or Quick-Connect) With Isolated Lamp Circuit  <b>7</b> .187 × .020 With Integral Lamp Circuit (Available with 2-Pole devices only)	<b>Silver Contacts:</b> <b>AA</b> (One Form A Single-Throw) Available only with isolated lamp circuit, term. type 4.  <b>AC</b> 2-Pole (Two Form A)	 <b>01</b> Maint. ON    Maint. OFF

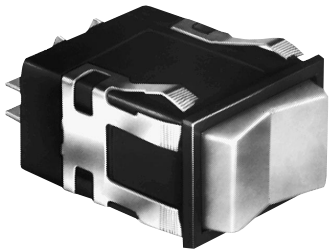
† The "MICRO SWITCH" identification is shown on this side of the switch housing.

Example: **AML35FBB4AA01**  
Rectangular paddle switch housing; black paddle and bezel; 125 VAC neon lamp; .187 × .020 terminals with isolated lamp circuit; 1-Pole Form A Single-Throw; with circuit ON in one extreme position and OFF in the other (maintained).

# Manual Switches

## Power Duty Rocker

INCANDESCENT, NEON, OR NON-LIGHTED DISPLAY



Rocker operators ordered separately.

Electrical Data	page 11
Rockers	page 39
Lamps	page 46
Mounting Dimensions	page 48

### FEATURES

- Same circuitry, and electrical rating as power duty paddle switches.
- Neon lamp circuitry can be isolated or integral on 2-pole switches; isolated-only on 1-pole switches (see schematics).
- UL recognized, CSA certified.
- AML34 lamp circuit independent of switch circuit.

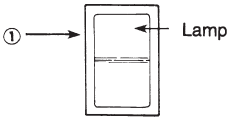


AML34 Series: 2-pole only.  
AML36 Series: 1-pole and 2-pole.

### AML34 ORDER GUIDE

AML34 accepts one incandescent lamp which can be furnished installed or ordered separately.

AML34 E	B	A	4	AA	01
Housing Type	Bezel Color	Incandescent Lamp Type	Terminal Type	Circuitry Codes	Operating Action
<b>AML34 E</b> Rectangular Non. Illum.  <b>AML34 F</b> Rectangular 1 Lamp Ckt.	<b>B</b> Black	<b>A</b> No Lamp Installed  <b>B</b> 6 V Lamp*  <b>C</b> 14 V Lamp*  <b>E</b> 28 V Lamp*	<b>4</b> .187 × .020 (Solder or Quick-Connect)	<b>Silver Contacts:</b> <b>AA</b> 1-Pole (One Form A Single-Throw)  <b>AC</b> 2-Pole (Two Form A)	 <b>01</b> Maint. ON    Maint. OFF

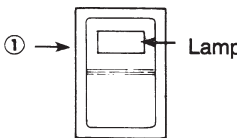


\* Lamps will be installed per each lamp circuit specified in the Housing Type.

### AML36 ORDER GUIDE

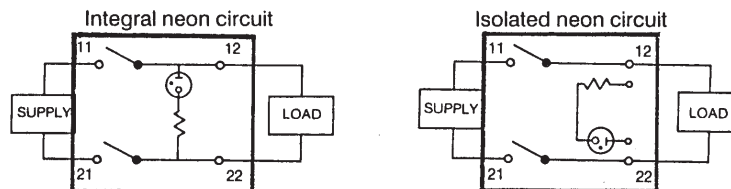
AML36 has neon lamp wired to 125 or 250 VAC resistor.

AML36 F	B	B	4	AA	01
Housing Type	Bezel Color	Neon Lamp Voltage	Terminal Type/ Lamp Circuit	Circuitry Codes	Operating Action
<b>AML36 F</b> Rectangular 1 Neon Lamp	<b>B</b> Black	<b>Red</b> 125 VAC  <b>C</b> 250 VAC  <b>Green</b> 125 VAC  <b>M</b> 125 VAC  <b>P</b> 250 VAC	<b>4</b> .187 × .020 (Solder or Quick-Connect) With Isolated Lamp Circuit  <b>7</b> .187 × .020 (Solder or Quick-Connect) With Integral Lamp Circuit	<b>Silver Contacts:</b> <b>AA</b> (One Form A Single-Throw) Not available with terminal type 7  <b>AC</b> 2-Pole (Two Form A)	 <b>01</b> Maint. ON    Maint. OFF



① The "MICRO SWITCH" identification is shown on this side of the switch housing.

Example: **AML36FBB4AA01**  
Rectangular rocker switch housing; black bezel; 125 VAC neon lamp; .187 × .020 terminals with isolated lamp circuit; 1-Pole Form A single-throw; with circuit ON in one extreme position and OFF in the other.



Manuals



Компания «ЭлектроПласт» предлагает заключение долгосрочных отношений при поставках импортных электронных компонентов на взаимовыгодных условиях!

Наши преимущества:

- Оперативные поставки широкого спектра электронных компонентов отечественного и импортного производства напрямую от производителей и с крупнейших мировых складов;
- Поставка более 17-ти миллионов наименований электронных компонентов;
- Поставка сложных, дефицитных, либо снятых с производства позиций;
- Оперативные сроки поставки под заказ (от 5 рабочих дней);
- Экспресс доставка в любую точку России;
- Техническая поддержка проекта, помощь в подборе аналогов, поставка прототипов;
- Система менеджмента качества сертифицирована по Международному стандарту ISO 9001;
- Лицензия ФСБ на осуществление работ с использованием сведений, составляющих государственную тайну;
- Поставка специализированных компонентов (Xilinx, Altera, Analog Devices, Intersil, Interpoint, Microsemi, Aeroflex, Peregrine, Syfer, Eurofarad, Texas Instrument, Miteq, Cobham, E2V, MA-COM, Hittite, Mini-Circuits, General Dynamics и др.);

Помимо этого, одним из направлений компании «ЭлектроПласт» является направление «Источники питания». Мы предлагаем Вам помощь Конструкторского отдела:

- Подбор оптимального решения, техническое обоснование при выборе компонента;
- Подбор аналогов;
- Консультации по применению компонента;
- Поставка образцов и прототипов;
- Техническая поддержка проекта;
- Защита от снятия компонента с производства.



#### Как с нами связаться

**Телефон:** 8 (812) 309 58 32 (многоканальный)

**Факс:** 8 (812) 320-02-42

**Электронная почта:** [org@eplast1.ru](mailto:org@eplast1.ru)

**Адрес:** 198099, г. Санкт-Петербург, ул. Калинина, дом 2, корпус 4, литера А.