

E160-6U-3 6U X 160MM

Circuit Pattern:

Width/Thick:

Height:

16-Pin DIP Capacity:

Material:

Wire-Wrap Terminals:

Wire-Wrap Socket Pins:

Rec. Card Cage:

96-Pin Din Connector:

Hole Diameter:

Voltage/Ground Plane

6.30"/.062"

9.19"

105

FR4 Epoxy Glass

T44, T46, T49, T68

R50, R51, R52, R53

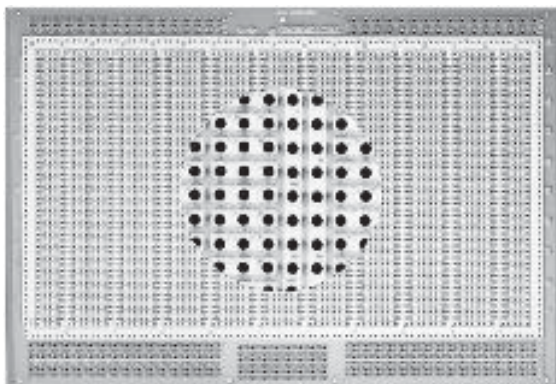
CCK160-6U

RE96MWR

(Available Separately)

.055"

- Overall voltage and ground planes on opposite board sides provide excellent shielding and power distribution
- To simulate plated-thru holes committed to voltage or ground planes, use Vector T123 eye lets, available separately) for use without pins
- Layout paper and instructions included
- Row and column legends provided



4615 6U X 160MM

Circuit Pattern:

Width/Thick:

Height:

16-Pin DIP Capacity:

Material:

Wire-Wrap Terminals:

Wire-Wrap Socket Pins:

Rec. Card Cage:

96-Pin Din Connector:

Hole Diameter:

3-Hole Solder Pad

6.30"/.062"

9.19"

50

FR4 Epoxy Glass

T44, T46, T49, T68

R32

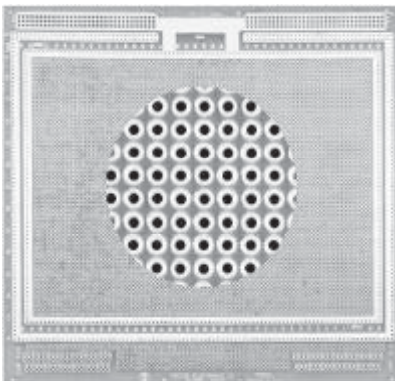
CCK160-6U

RE96MWR

(Available Separately)

.042"

- 3-hole solder pads (0.28" x 0.080") for interconnecting multiple component leads
- Bus and pad surfaces solder-coated for user convenience
- Interleaved buses on both sides, back-to-back
- Layout paper and instructions included
- Row and column legends provided



E220-6U-1 6U X 220MM

Circuit Pattern:

Width/Thick:

Height:

16-Pin DIP Capacity:

Material:

Wire-Wrap Terminals:

Wire-Wrap Socket Pins:

Rec. Card Cage:

96-Pin Din Connector:

Hole Diameter:

Pad-per-hole

8.66"/0.62"

9.19"

140

FR4 Epoxy Glass

T44, T46, T49, T68

R32

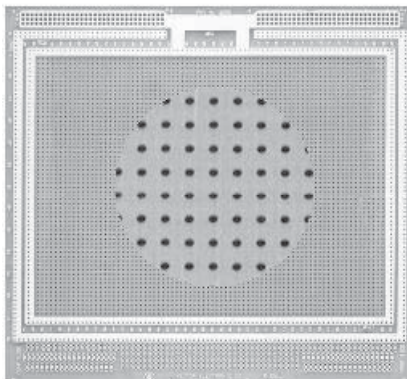
CCK220-6U

RE96MWR

(Available Separately)

.042"

- Plated-thru holes
- Voltage and ground buses around board perimeter both sides
- Pad and Bus surfaces solder-coated for user convenience
- Also accepts PGA's and PLCC's
- Layout paper and instructions included
- Row and column legends provided



E220-6U-2 6U X 220MM

Circuit Pattern:

Width/Thick:

Height:

16-Pin DIP Capacity:

Material:

Wire-Wrap Terminals:

Wire-Wrap Socket Pins:

Rec. Card Cage:

96-Pin Din Connector:

Hole Diameter:

Peripheral Buses

8.66"/.062"

9.19"

140

FR4 Epoxy Glass

T44, T46, T49, T68

R32

CCK220-6U

RE96MWR

(Available Separately)

.042"

- Voltage and ground buses around board perimeter both sides
- Bus surfaces solder-coated for user convenience
- Also accepts PGA's and PLCC's
- 58 x 78 grid unrestricted component placement area
- Layout paper and instructions included
- Row and column legends provided

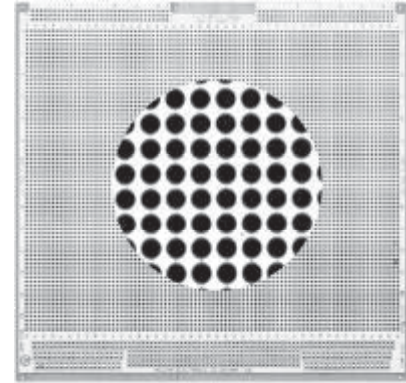
E220-6U-3**6U X 220MM**

Circuit Pattern:
Width/Thick:
Height:
16-Pin DIP Capacity:
Material:
Wire-Wrap Terminals:
Wire-Wrap Socket Pins:
Rec. Card Cage:
96-Pin Din Connector:

Hole Diameter:

Voltage/Ground plane
 8.66"/.062"
 9.19"
 168
 FR4 Epoxy Glass
 T44, T46, T49, T68
 R50, R51, R52, R53
 CCK220-6U
 RE96MWR
 (Available Separately)
 .055"

- Overall voltage and ground planes on opposite board sides provide excellent shielding and power distribution
- Plane surfaces solder-coated for user convenience
- To simulate plated-thru holes committed to voltage or ground planes, use Vector T123 eyelets, available separately (for use without pins)
- Layout paper and instructions included

**9U****E280-9U-1****9U X 280MM**

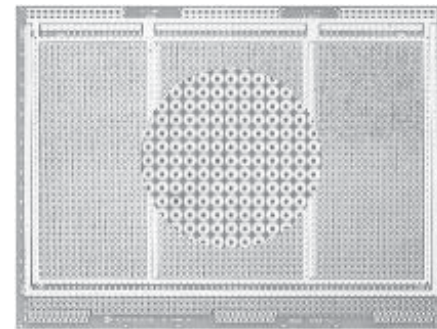
Hole Diameter:
Circuit Pattern:

Width/Thick:
Height:
16-Pin DIP Capacity:
Material:
Wire-Wrap Terminals:
Wire-Wrap Socket Pins:
Rec. Card Cage:
96-Pin Din Connector:

.042"
 Pad-Per-Hole

 11.02"/.062"
 14.44"
 270
 FR4 Epoxy Glass
 T44, T46, T49, T68
 R32
 CCK280-9U
 RE96MWR
 (Available Separately)

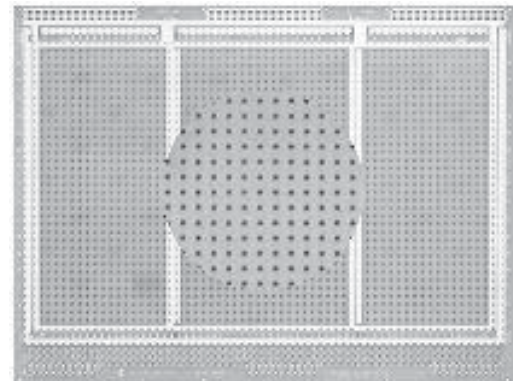
- Voltage and ground buses around board perimeter both sides
- Accepts PGA and PLCC devices
- Additional power and ground buses in signal area
- Layout paper and instructions included
- Row and column legends provided
- Plated-thru holes

**E280-9U-2****9U X 280MM**

Circuit Pattern:
Width/Thick:
Height:
16-Pin DIP Capacity:
Material:
Wire-Wrap Terminals:
Wire-Wrap Socket Pins:
Rec. Card Cage:
96-Pin Din Connector:
Hole Diameter:

Peripheral Buses
 11.02"/.062"
 14.44"
 270
 FR4 Epoxy Glass
 T44, T46, T49, T68
 R32
 CCK280-9U
 RE96MWR
 .042"

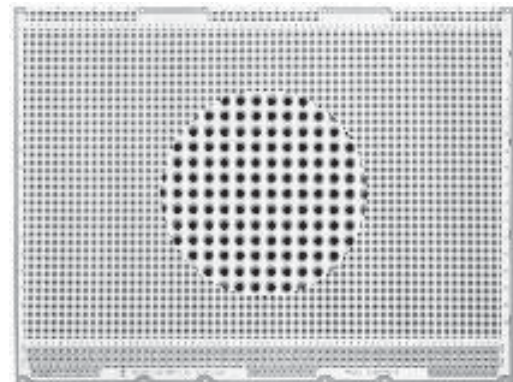
- Voltage and ground buses around board perimeter both sides
- Bus surfaces solder-coated for user convenience
- Capacity for mounting 270, 16-pin DIP IC devices; also accepts PGA and PLCC devices
- Additional power and ground buses in signal area
- Three 79 x 36 grid unrestricted component placement areas
- Layout paper and instructions included
- Row and column legends provided

**E280-9U-3****9U X 280MM**

Circuit Pattern:
Width/Thick:
Height:
16-Pin DIP Capacity:
Material:
Wire-Wrap Terminals:
Wire-Wrap Socket Pins:
Rec. Card Cage:
96-Pin Din Connector:
Hole Diameter:

Voltage/Ground Plane
 11.02"/.062"
 14.44"
 348
 FR4 Epoxy Glass
 T44, T46, T49, T68
 R50, R51, R52, R53
 CCK280-9U
 RE96MWR
 .055"

- Overall voltage and ground planes on opposite board sides provide excellent shielding and power distribution
- Additional power and ground buses in signal area
- To simulate plated-thru holes committed to voltage or ground planes, use Vector T123 eyelets, available separately (for use without pins)
- Layout paper and instructions included
- Row and column legends provided





Компания «ЭлектроПласт» предлагает заключение долгосрочных отношений при поставках импортных электронных компонентов на взаимовыгодных условиях!

Наши преимущества:

- Оперативные поставки широкого спектра электронных компонентов отечественного и импортного производства напрямую от производителей и с крупнейших мировых складов;
- Поставка более 17-ти миллионов наименований электронных компонентов;
- Поставка сложных, дефицитных, либо снятых с производства позиций;
- Оперативные сроки поставки под заказ (от 5 рабочих дней);
- Экспресс доставка в любую точку России;
- Техническая поддержка проекта, помощь в подборе аналогов, поставка прототипов;
- Система менеджмента качества сертифицирована по Международному стандарту ISO 9001;
- Лицензия ФСБ на осуществление работ с использованием сведений, составляющих государственную тайну;
- Поставка специализированных компонентов (Xilinx, Altera, Analog Devices, Intersil, Interpoint, Microsemi, Aeroflex, Peregrine, Syfer, Eurofarad, Texas Instrument, Miteq, Cobham, E2V, MA-COM, Hittite, Mini-Circuits, General Dynamics и др.);

Помимо этого, одним из направлений компании «ЭлектроПласт» является направление «Источники питания». Мы предлагаем Вам помощь Конструкторского отдела:

- Подбор оптимального решения, техническое обоснование при выборе компонента;
- Подбор аналогов;
- Консультации по применению компонента;
- Поставка образцов и прототипов;
- Техническая поддержка проекта;
- Защита от снятия компонента с производства.



Как с нами связаться

Телефон: 8 (812) 309 58 32 (многоканальный)

Факс: 8 (812) 320-02-42

Электронная почта: org@eplast1.ru

Адрес: 198099, г. Санкт-Петербург, ул. Калинина, дом 2, корпус 4, литера А.