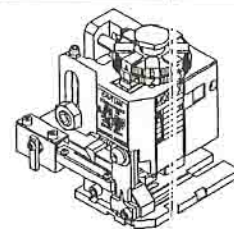




APPLICATION TOOLING MINI-MAC APPLICATOR SPECIFICATION SHEET



TERMINAL SPECIFICATION

TERMINAL SERIES	WIRE SIZE		INSULATION DIAMETER		STRIP LENGTH	
	MIN	MAX	ENGLISH	(METRIC)	ENGLISH	(METRIC)
43375-1001	DBL 18		.110 X 2	(2.8 X 2)	.156 - .218	(3.96 - 5.54)
43374-1001	DBL 18		.110 X 2	(2.8 X 2)	.156 - .218	(3.96-5.54)
			-	(-)	-	(-)
			-	(-)	-	(-)
			-	(-)	-	(-)
			-	(-)	-	(-)
			-	(-)	-	(-)

TOOLING INFORMATION

ITEM	ORDER NO.	SIZE	ENG. NO.	DESCRIPTION	REQ'D
4	634430002	B	634430002	FRONT CUT-OFF PLUNGER	1
6	1-18-5418	B	60843A106	CONDUCTOR PUNCH	1
7	634452562	B	634452562	CONDUCTOR ANVIL	1
8	1-18-5414	B	60842A108	INSULATION PUNCH	1
9	634453947	B	634453947	INSULATION ANVIL	1
10	631430012	B	634430012	CUT-OFF PLUNGER RETAINER	1
***	638303070		638303070	TOOL KIT (ALL THE ABOVE ITEMS)	1

CRIMP SPECIFICATION

SET	WIRE AWG	CRIMP HEIGHT		CRIMP WIDTH (REF.)		PULL FORCE MINIMUM	
		ENGLISH	(METRIC)	ENGLISH	(METRIC)	LBS.	(N)
	DBL 18	.058 - .062	(1.47 - 1.57)	.098	(2.50)	20	(88.9)
		-	(-)	()	()	()	()
		-	(-)	()	()	()	()
		-	(-)	()	()	()	()

NOTES:

1. WE RECOMMEND AN EXTRA SET OF PERISHABLE TOOLING BE MAINTAINED IN YOUR FACTORY.
2. VERIFY TOOLING ALIGNMENT BY MANUALLY CYCLING THE PRESS AND DIE BEFORE CRIMPING UNDER POWER. CHECK THAT ALL SCREWS ARE TIGHT.
3. SLUGS, TERMINALS, DIRT AND OIL SHOULD BE KEPT CLEAR OF WORK AREA.
4. TO USE THE ABOVE SETTINGS, YOUR PRESS SHOULD HAVE A SHUT HEIGHT OF 135.8 MM. CRIMP HEIGHT MAY STILL VARY DEPENDING ON STYLE AND WIRE TYPE. SHIMMING COULD BE NECESSARY TO ACHIEVE CRIMP HEIGHTS.
5. TO PREVENT INJURY - NEVER OPERATE THIS TOOL WITHOUT THE GUARDING SUPPLIED WITH THE PRESS IN PLACE.

DD-MINI-MAC PROD.
HUMAN MADE

NO FOR PRODUCTION
RELEASE FOR PRODUCTION
DATE 1999/02/18
GOC 638303070

REVISEMENTS

MFG. SH. REVISIONS

A

DIMENSIONS SHOWN (METRIC) INCH
UNLESS OTHERWISE SPECIFIED
TOLERANCES: ANGULAR ± 1/2°

	INCH	METRIC
3 PLACE	±	---
2 PLACE	±	±
1 PLACE	---	±

DRAFT WHERE APPLICABLE MUST
REMAIN WITHIN DIMENSIONS

DRWG. BY: **JMP** CHK'D. BY: **GOC**

APP'D. BY: SCALE: **NA**

▽ = ▼ = REVISE ONLY ON CAD SYSTEM

TITLE
**SPECIAL DOUBLES APPLICATOR
FOR HOUSING PART NOS.
6313, 43275 & 41644-24**

MOLEX INCORPORATED SHEET NO. DATE
LISLE, ILL. 60532 U.S.A. 1 OF 4 03/15/99

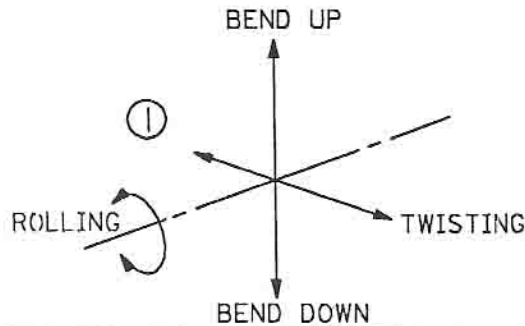
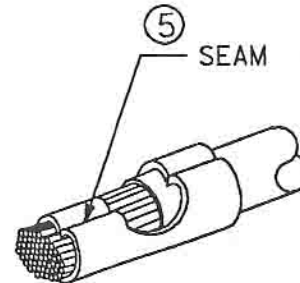
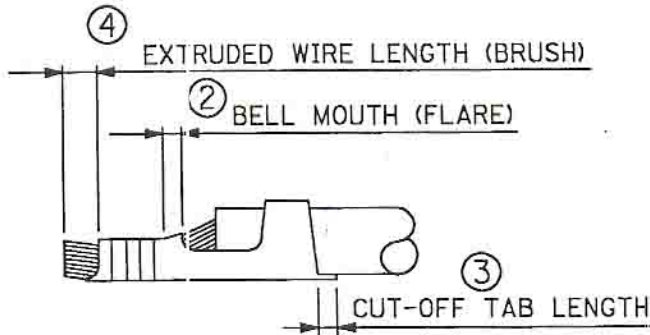
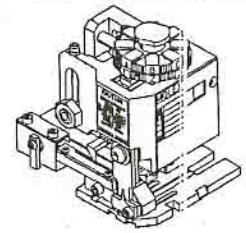
PART NO. DRWG. NO.
638303000 **638303000**

FILE NAME: **6383030** THIS DRAWING CONTAINS INFORMATION THAT IS PROPRIETARY TO MOLEX INC. AND SHOULD NOT BE USED WITHOUT WRITTEN PERMISSION. DIV. SIZE
S80 **AT** **A**

UC



APPLICATION TOOLING MINI-MAC APPLICATOR SPECIFICATION SHEET



CRIMP SPECIFICATION

NO. OF FIG.	ITEM	REQUIREMENT
1	BEND UP	3°
	BEND DOWN	3°
	TWISTING	4°
	ROLLING	8°
2	BELL MOUTH (FLARE)	.20 - .50mm
3	CUT-OFF TAB LENGTH	.012" MAX. (.30mm MAX.)
4	EXTRUDED WIRE LENGTH (BRUSH)	.030" MAX. (.76mm MAX.)
5	SEAM	SEAM SHALL NOT BE OPENED AND NO WIRE ALLOWED OUT OF THE CRIMPING AREA.

DD-MMM-YY
HHMM
MFG. SH. RE. WORK AREA
PLEASE USE
#UNIT 1905025A
GOC
REVISIONS
L.T.R.

DIMENSIONS SHOWN (METRIC) INCH

UNLESS OTHERWISE SPECIFIED
TOLERANCES: ANGULAR ± 1/2°

	INCH	METRIC
3 PLACE	±	---
2 PLACE	±	±
1 PLACE	---	±

DRAFT WHERE APPLICABLE MUST
REMAIN WITHIN DIMENSIONS

DRWG. BY: JMP CHK'D. BY: GOC
APP'D. BY: SCALE: NA



REVISE ONLY ON CAD SYSTEM

TITLE
SPECIAL DOUBLES APPLICATOR
FOR HOUSING PART NOS.
6313, 43275 & 41644-24



MOLEX INCORPORATED
LISLE, ILL. 60532 U.S.A.

SHEET NO.

DATE

2 OF 4

03/15/99

PART NO.

DRWG. NO.

638303000

638303000

FILE NAME
6383030
S81

THIS DRAWING CONTAINS INFORMATION THAT IS PROPRIETARY TO
MOLEX INC. AND SHOULD NOT BE USED WITHOUT WRITTEN PERMISSION.

DIV.

SIZE

AT

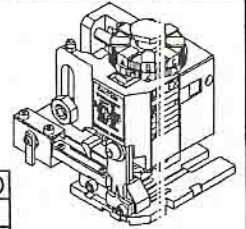
A

UC



MINI-MAC APPLICATOR

SPECIFICATION SHEET



APPLICATOR ASSEMBLY - PARTS LIST

ITEM	ORDER NO.	SIZE	ENG. NO.	DESCRIPTION	REQ'D
11	638303002	B	638303002	ANVIL MOUNT	1
14	638303001	B	638303001	PLUNGER STRIKER	1
15	638303005	B	638303005	TOOLING WASHER	1
16	11-24-1067	A	4996-4	CUT-OFF PLUNGER SPRING	1
17	11-18-5348	B	60811A126	REAR COVER	1
18					
21	11-18-5016	B	60812A105	CONDUCTOR ADJUSTING CAM	1
22	638220106	B	638220106	TERMINAL STRIPPER	1
23	11-18-5442	B	60843A123	FRONT COVER	1
40	11-18-5007	A	60800D114	HOLD DOWN PLUNGER SPRING	1
41	638303003	B	638303003	HOLD DOWN BLOCK	1
42	11-18-5411	B	60832A142	SPRING RETAINER	1
43	11-18-5412	B	60832A143	HOLD DOWN PLUNGER	1
12	634430021	B	634430021	MOUNTING KEY	1
---	11-18-4795	A	60700-66	WAVE WASHER	1
---	11-18-4238	A	60700-1	FEED CAM (SHORT)	1

TOOLING INFORMATION

ITEM	ORDER NO.	SIZE	ENG. NO.	DESCRIPTION	REQ'D
4	634430002	B	634430002	FRONT CUT-OFF PLUNGER	1
6	11-18-5418	B	60843A106	CONDUCTOR PUNCH	1
7	634452562	B	634452562	CONDUCTOR ANVIL	1
8	11-18-5414	B	60842A108	INSULATION PUNCH	1
9	634453947	B	634453947	INSULATION ANVIL	1
10	634430012	B	634430012	CUT-OFF PLUNGER RETAINER	1
***	638303070		638303070	TOOL KIT (ALL THE ABOVE ITEMS)	1

FRAME ASSY

ITEM	ORDER NO.	SIZE	ENG. NO.	DESCRIPTION	REQ'D
	63800-0100	B	63800-0100	FRAME ASSY	1
	11-18-5016	B	60812A105	CONDUCTOR ADJUSTING CAM	1

DD-MMM-YY
HH:MM:SS
WORK AREA
PLEASE FOR RETURN
#1JA 0999
#1JA 0999/99
GOC 04/28/99

MFG. SH. REV. 1
L.T.R. REVISIONS

DIMENSIONS SHOWN (METRIC) INCH

UNLESS OTHERWISE SPECIFIED
TOLERANCES: ANGULAR ± 1/2°

	INCH	METRIC
3 PLACE	± ---	---
2 PLACE	± ---	± 0.13
1 PLACE	---	± 0.25

DRAFT WHERE APPLICABLE MUST
REMAIN WITHIN DIMENSIONS

▽ = ▼ = REVISE ONLY ON CAD SYSTEM

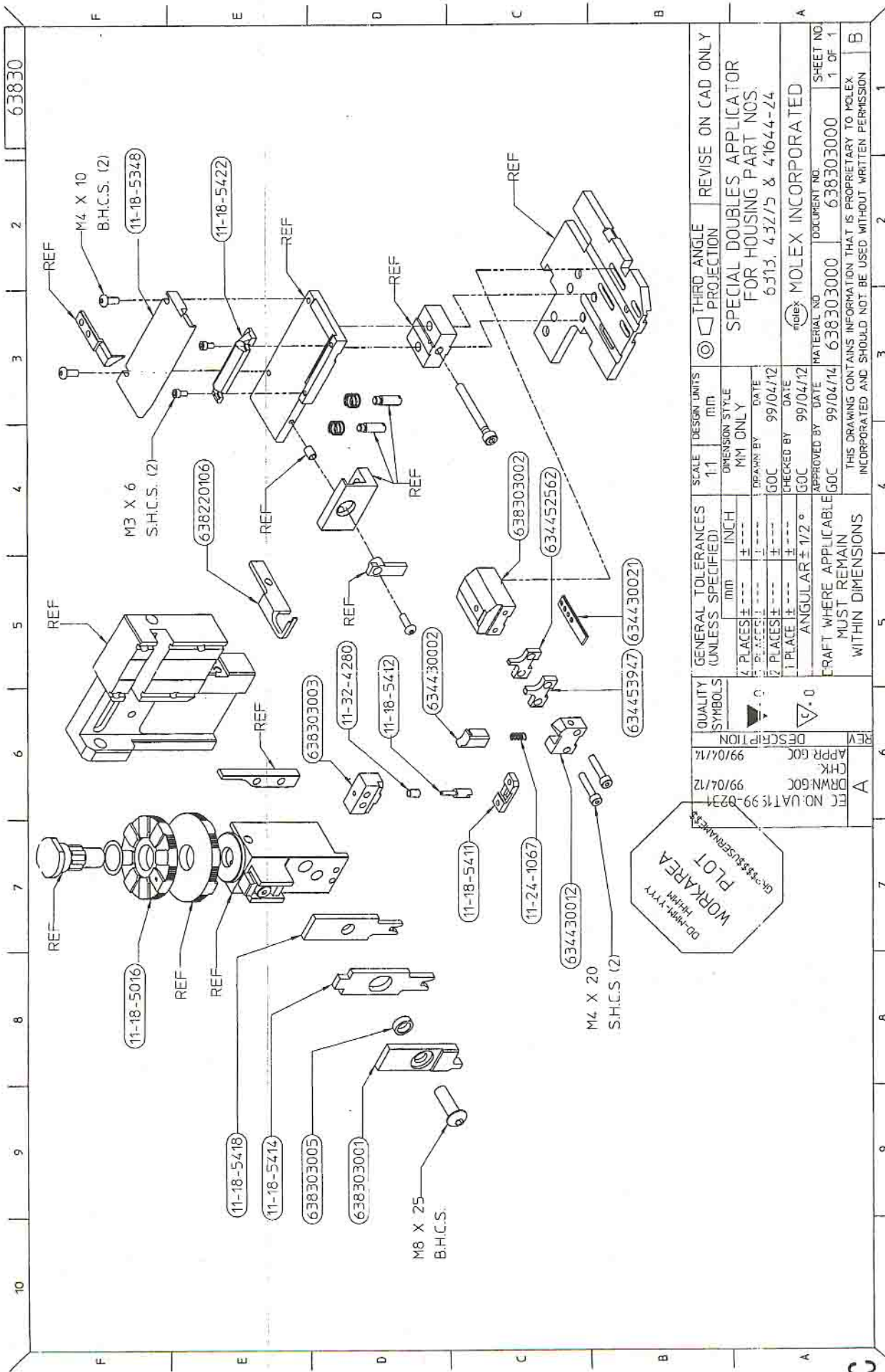
TITLE
**SPECIAL DOUBLES APPLICATOR
FOR HOUSING PART NOS.
6313, 43275 & 41644-24**

MOLEX INCORPORATED SHEET NO. DATE
LISLE, ILL. 60532 U.S.A. 3 OF 4 02/23/95

PART NO. DRWG. NO.
638303000 **638303000**

FILE NAME THIS DRAWING CONTAINS INFORMATION THAT IS PROPRIETARY TO
6383030 MOLEX INC. AND SHOULD NOT BE USED WITHOUT WRITTEN PERMISSION. DIV. SIZE
582 AT A

UC



63830

2

3

4

5

6

7

8

9

10

F

E

D

C

B

A

THIRD ANGLE PROJECTION	REVISION ON CAD ONLY
SPECIAL DOUBLES APPLICATOR FOR HOUSING PART NOS. 6313, 4321/5 & 41644-24	
SCALE 1:1	DESIGN UNITS MM
GENERAL TOLERANCES (UNLESS SPECIFIED)	INCH
4 PLACES ±	±
3 PLACES ±	±
2 PLACES ±	±
1 PLACE ±	±
ANGULAR ± 1/2°	
QUALITY SYMBOLS	DESCRIPTION
▲ 0	
▽ 0	
EC NO: UAT199-0234	APPR GOC 99/04/12
CHK	DRWN GOC 99/04/12
REV	DESCRIPTION
A	
APPROVED BY GOC	DATE 99/04/12
CHECKED BY GOC	DATE 99/04/12
DRAWN BY GOC	DATE 99/04/12
INCORPORATED AND SHOULD NOT BE USED WITHOUT WRITTEN PERMISSION	
MATERIAL NO. 638303000	DOCUMENT NO. 638303000
CRAFT WHERE APPLICABLE MUST REMAIN WITHIN DIMENSIONS	
MOLEX INCORPORATED	
SHEET NO. 1 OF 1	

DD-MMM-YY
PLOT
WORKAREA
GR-3333USERMakers



Компания «ЭлектроПласт» предлагает заключение долгосрочных отношений при поставках импортных электронных компонентов на взаимовыгодных условиях!

Наши преимущества:

- Оперативные поставки широкого спектра электронных компонентов отечественного и импортного производства напрямую от производителей и с крупнейших мировых складов;
- Поставка более 17-ти миллионов наименований электронных компонентов;
- Поставка сложных, дефицитных, либо снятых с производства позиций;
- Оперативные сроки поставки под заказ (от 5 рабочих дней);
- Экспресс доставка в любую точку России;
- Техническая поддержка проекта, помощь в подборе аналогов, поставка прототипов;
- Система менеджмента качества сертифицирована по Международному стандарту ISO 9001;
- Лицензия ФСБ на осуществление работ с использованием сведений, составляющих государственную тайну;
- Поставка специализированных компонентов (Xilinx, Altera, Analog Devices, Intersil, Interpoint, Microsemi, Aeroflex, Peregrine, Syfer, Eurofarad, Texas Instrument, Miteq, Cobham, E2V, MA-COM, Hittite, Mini-Circuits, General Dynamics и др.);

Помимо этого, одним из направлений компании «ЭлектроПласт» является направление «Источники питания». Мы предлагаем Вам помощь Конструкторского отдела:

- Подбор оптимального решения, техническое обоснование при выборе компонента;
- Подбор аналогов;
- Консультации по применению компонента;
- Поставка образцов и прототипов;
- Техническая поддержка проекта;
- Защита от снятия компонента с производства.



Как с нами связаться

Телефон: 8 (812) 309 58 32 (многоканальный)

Факс: 8 (812) 320-02-42

Электронная почта: org@eplast1.ru

Адрес: 198099, г. Санкт-Петербург, ул. Калинина, дом 2, корпус 4, литера А.