

»» Features



- 10A general purpose Power Relay.
- Both available 0.25 and 0.187 terminals.
- SPDT, DPDT, TPDT contact configurations.
- AC & DC coils are both available.
- Optional for anti-rotation tab, tapped core, indicator lamp & push-to-test button, flanged cover.
- Comply with RoHS-Directive 2002/95/EC.

»» Type List

◆731

| Terminal style | Contact form | Enclosure style | | | | |
|----------------|--------------|-----------------|------------|---------------|-------------------|-------------|
| | | Open type | Dust cover | Ears on cover | Antirotation -tab | Ears on top |
| Quick terminal | 1A (SPNO) | 731-SPNO | 731-SPNO-C | 731-SPNO-C1 | 731-SPNO-C2 | 731-SPNO-C3 |
| | 1C (SPDT) | 731-SPDT | 731-SPDT-C | 731-SPDT-C1 | 731-SPDT-C2 | 731-SPDT-C3 |
| | 2A (DPNO) | 731-DPNO | 731-DPNO-C | 731-DPNO-C1 | 731-DPNO-C2 | 731-DPNO-C3 |
| | 2C (DPDT) | 731-DPDT | 731-DPDT-C | 731-DPDT-C1 | 731-DPDT-C2 | 731-DPDT-C3 |
| | 3A (TPNO) | 731-TPNO | 731-TPNO-C | 731-TPNO-C1 | 731-TPNO-C2 | 731-TPNO-C3 |
| | 3C (TPDT) | 731-TPDT | 731-TPDT-C | 731-TPDT-C1 | 731-TPDT-C2 | 731-TPDT-C3 |

◆731H

| Terminal style | Contact form | Enclosure style | | |
|----------------|--------------|-----------------|---------------|--------------|
| | | Dust cover | Ears on cover | Ears on top |
| Quick terminal | 1A (SPNO) | 731H-SPNO-C | 731H-SPNO-C1 | 731H-SPNO-C3 |
| | 1C (SPDT) | 731H-SPDT-C | 731H-SPDT-C1 | 731H-SPDT-C3 |
| | 2A (DPNO) | 731H-DPNO-C | 731H-DPNO-C1 | 731H-DPNO-C3 |
| | 2C (DPDT) | 731H-DPDT-C | 731H-DPDT-C1 | 731H-DPDT-C3 |
| | 3A (TPNO) | 731H-TPNO-C | 731H-TPNO-C1 | 731H-TPNO-C3 |
| | 3C (TPDT) | 731H-TPDT-C | 731H-TPDT-C1 | 731H-TPDT-C3 |

»» Ordering Information

731 □ - TPDT - □ □ - □
 1 2 3 4 5 6

1. 731 -- Basic series designation
2. Blank -- Standard type
H -- High power type
3. SPDT -- Single pole double throw
SPNO -- Single pole normally open
SPNC -- Single pole normally closed

- DPDT -- Double pole double throw
- DPNO -- Double pole normally open
- DPNC -- Double pole normally closed
- TPDT -- Three pole double throw
- TPNO -- Three pole normally open
- TPNC -- Three pole normally closed

- | | | | |
|----------|---|----------|------------------------------------|
| 4. Blank | -- Open type without frame tab | 5. Blank | -- No special feature |
| C | -- With cover | M | -- With manual operator |
| C1 | -- With mounting ears on cover | T | -- Printed circuit board terminals |
| C2 | -- With accessible mounting hole with anti-rotation tab | L | -- Pilot lamp |
| C3 | -- Mounting Ears on top of cover | 6. Blank | -- Standard type |
| X | -- Open type with frame tab | F | -- Class F |

»» Contact Rating

| | 731 | 731H 1P · 2P | 731H 3P |
|----------------|------------|--------------|------------|
| Resistive load | 10A 28VDC | 20A 300VAC | 16A 300VAC |
| | 10A 240VAC | 25A 277VAC | 20A 277VAC |

»» Coil Rating (DC)

| Rated voltage (V) | Rated current ±10 % at 23°C (mA) | Coil resistance ±10 % at 23°C (Ω) | Max. continuous voltage at 70°C | Pick up voltage(Max) at 23°C | Drop out voltage(Min) at 23°C | Power consumption at rated voltage |
|-------------------|----------------------------------|-----------------------------------|---------------------------------|------------------------------|-------------------------------|------------------------------------|
| 6 | 188 | 32 | 140 % of rated voltage | 75 % of rated voltage | 10 % of rated voltage | approx. 1.2W |
| 12 | 100 | 120 | | | | |
| 24 | 51 | 472 | | | | |
| 48 | 27 | 1800 | | | | |
| 110 | 11 | 10000 | | | | |
| 120 | 12 | 10000 | | | | |

»» Coil Rating (AC)

| Rated voltage (V) | Coil resistance ±10 % at 23°C (Ω) | Max. continuous voltage at 70°C | Pick up voltage(Max) at 23°C | Drop out voltage(Min) at 23°C | Power consumption at rated voltage | |
|-------------------|-----------------------------------|---------------------------------|------------------------------|-------------------------------|------------------------------------|---------------|
| SP DP | 12 | 21 | 110 % of rated voltage | 85 % of rated voltage | 30 % of rated voltage | approx. 2.0VA |
| | 24 | 85 | | | | |
| | 110 | 1700 | | | | |
| | 115 | 1700 | | | | |
| | 120 | 2250 | | | | |
| | 220 | 7200 | | | | |
| | 230 | 7200 | | | | |
| | 240 | 9110 | | | | |

»» Coil Rating (AC)

| Rated voltage (V) | Coil resistance $\pm 10\%$ at 23°C (Ω) | Max. continuous voltage at 70°C | Pick up voltage(Max) at 23°C | Drop out voltage(Min) at 23°C | Power consumption at rated voltage | |
|-------------------|---|---------------------------------|------------------------------|-------------------------------|------------------------------------|---------------|
| TP | 12 | 18 | 110 % of rated voltage | 85 % of rated voltage | 30 % of rated voltage | approx. 2.7VA |
| | 24 | 72 | | | | |
| | 110 | 1300 | | | | |
| | 115 | 1300 | | | | |
| | 120 | 1700 | | | | |
| | 220 | 5600 | | | | |
| | 230 | 5600 | | | | |
| | 240 | 7200 | | | | |

»» Specification

| | | |
|--------------------------------------|---|--|
| Contact material | AgSnO alloy | |
| Contact resistance ⁽¹⁾ | 50m Ω Max. (for 731) ; 100m Ω Max. (for 731H) (1A/6VDC by 4 pipes m Ω meter) | |
| Operate time ⁽¹⁾ | 20 ms Max. | |
| Release time ⁽¹⁾ | 20 ms Max. | |
| Insulation resistance ⁽¹⁾ | 1000 M Ω Min. (DC 500V) | |
| Dielectric strength ⁽¹⁾ | Between open contact | : AC 500V , 50/60Hz 1 min. (for 731) : AC 1000V , 50/60Hz 1 min. (for 731H) |
| | Between contact and coil | : AC 1500V , 50/60Hz 1 min. (for 731) : AC 2500V , 50/60Hz 1 min. (for 731H) |
| | Between contact circuits | : AC 1500V , 50/60Hz 1 min. (for 731) : AC 2500V , 50/60Hz 1 min. (for 731H) |
| Vibration resistance | Operating extremes | 10~55Hz , amplitude 1.0 mm |
| | Damage limits | 10~55Hz , amplitude 1.5 mm |
| Shock resistance | Operating extremes | 10G |
| | Damage limits | 100G |
| Life expectancy | Mechanical | 10,000,000 operations (frequency 18,000 ops./hr) |
| | Electrical | 100,000 operations (frequency 1,200 ops./hr) (for 731) 50,000 operations (frequency 360 ops./hr) (for 731H) |
| Operating ambient temperature | -45~+70°C (no freezing) (for 731) | |
| | AC coil : -45~+55°C (no freezing) (for 731H) DC coil : -45~+65°C (no freezing) | |
| Weight | Approx. 79.2 g | |

Note : (1) initial value.

731

»» Safety Approval

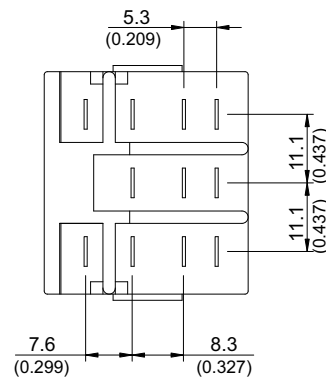
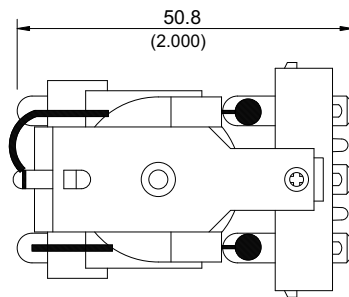
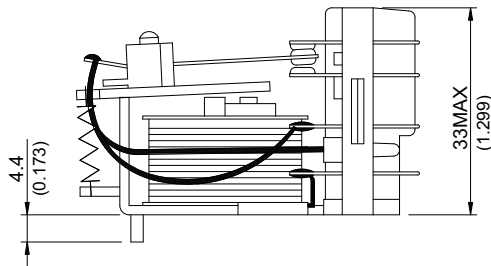
| Certified | 731 | | | 731H |
|-----------|--------|---------|-------|----------|
| | UL | CSA | FIMKO | UL / CUL |
| File No. | E88991 | 1663800 | 23797 | E88991 |

»» Safety Approval Rating

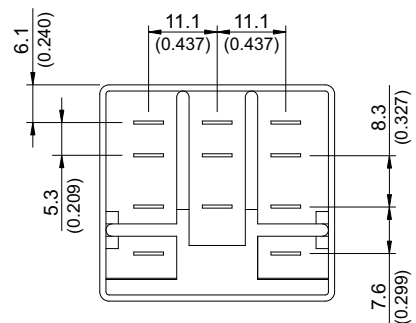
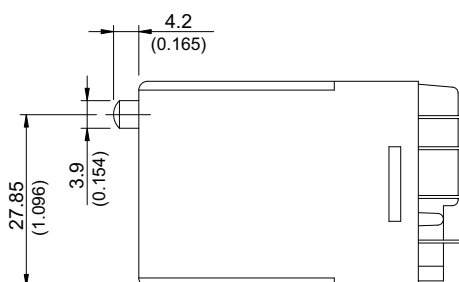
| 731 | | 731H 1P - 2P | 731H 3P |
|--------------|------------|--------------|--------------|
| UL - CSA | FIMKO | UL / CUL | |
| 10A 240VAC | 10A 250VAC | 20A 300VAC | 16A 300VAC |
| 10A 28VDC | | 25A 277VAC | 20A 277VAC |
| 1/3HP 120VAC | | 1.5HP 240VAC | 1.5HP 240VAC |
| 1/2HP 240VAC | | 1HP 120VAC | 1HP 120VAC |

»» Outline Dimensions

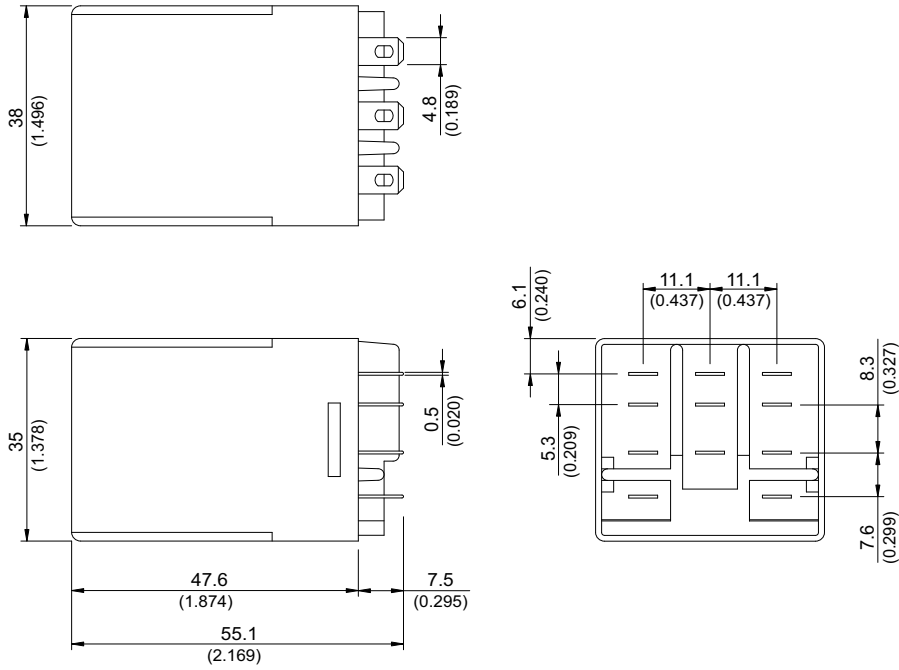
◆ 731 OPEN



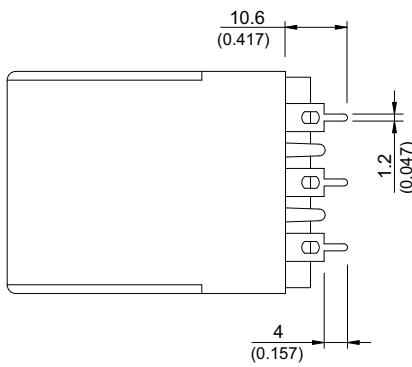
◆ 731 M



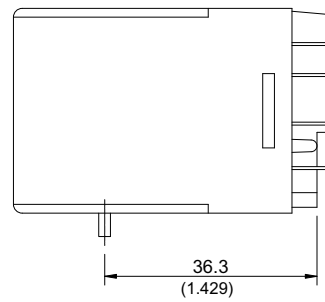
◆ 731 C



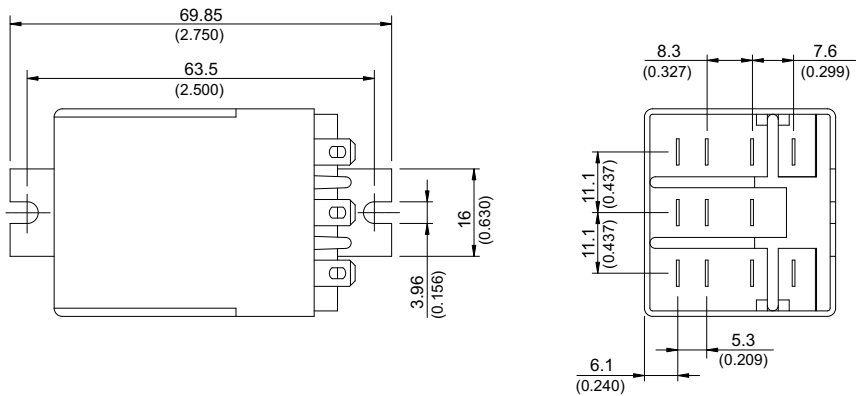
◆ 731 T



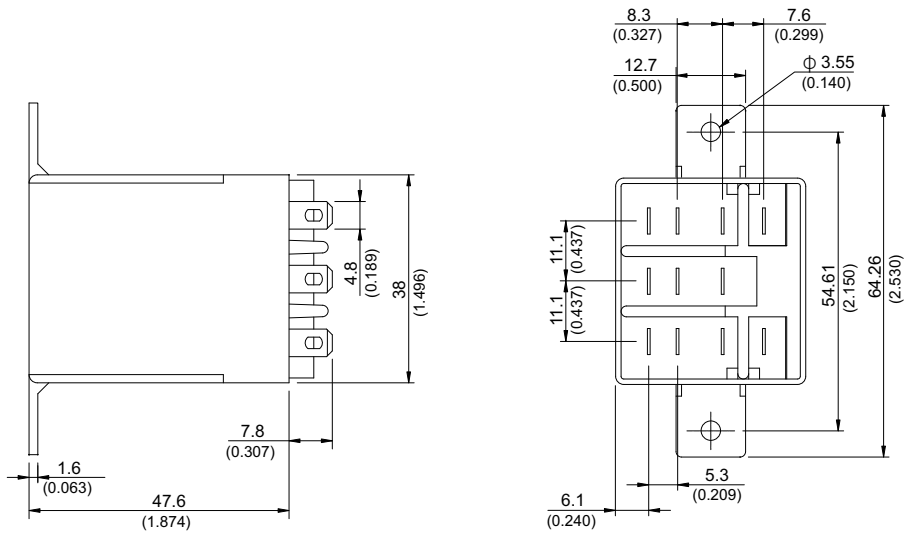
◆ 731 C2



◆ 731 C1

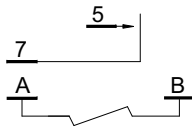


◆ 731 C3

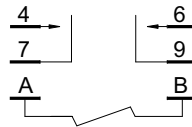


»» Wiring Diagram
BOTTOM VIEW

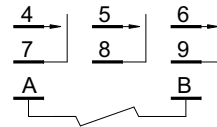
SPNO



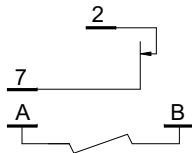
DPNO



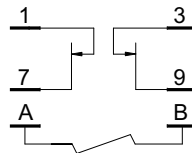
TPNO



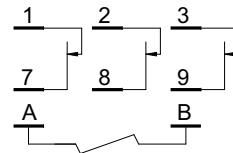
SPNC



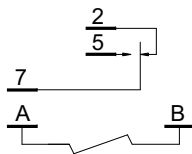
DPNC



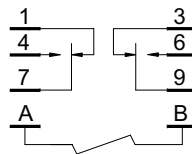
TPNC



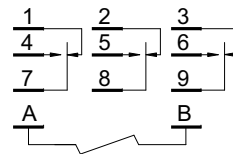
SPDT



DPDT

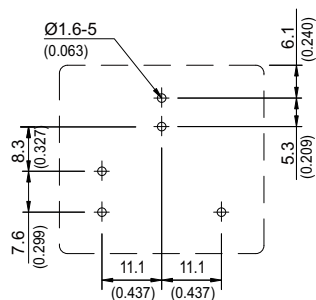


TPDT

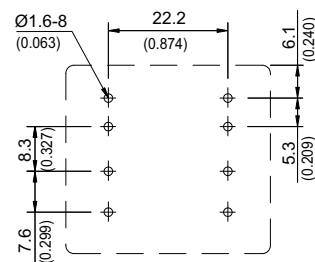


»» PC Board Layout
BOTTOM VIEW

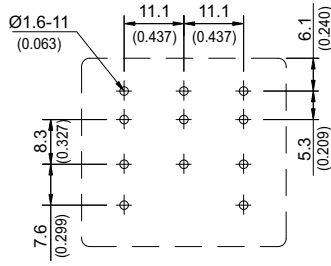
1P



2P

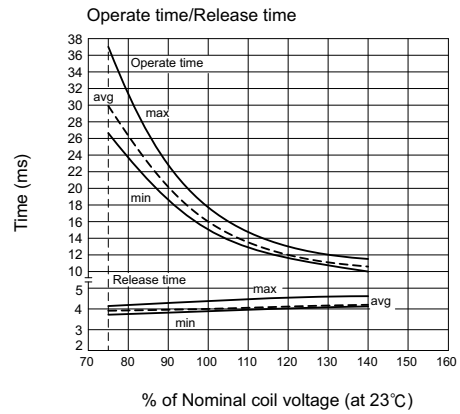
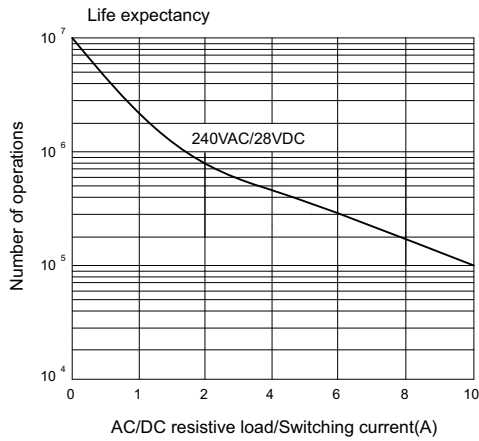
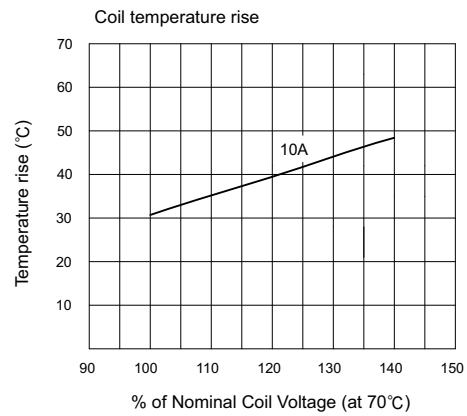
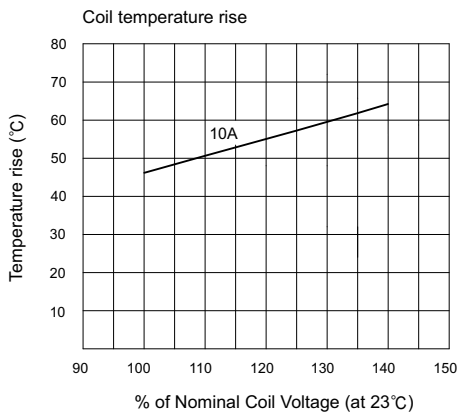


3P

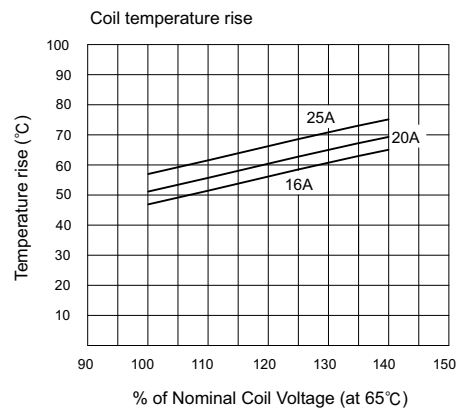
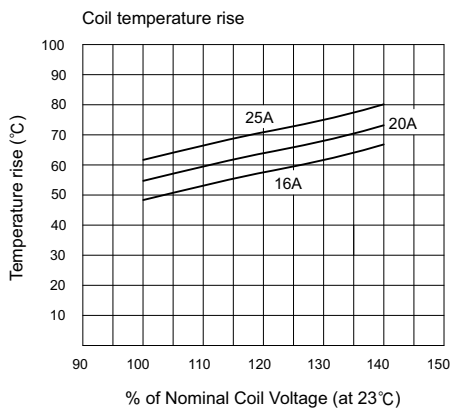


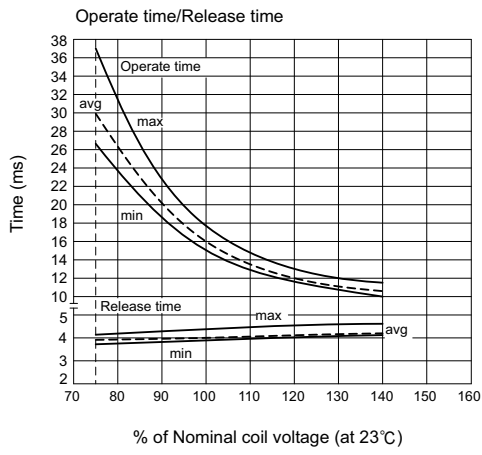
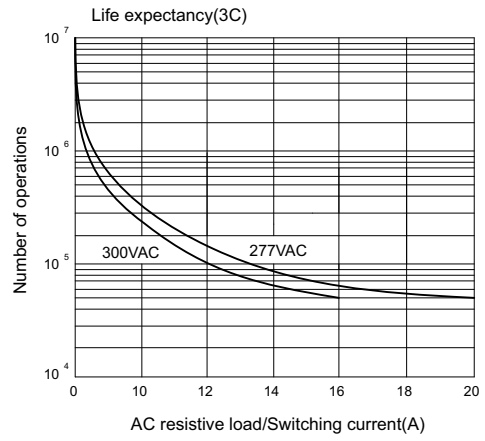
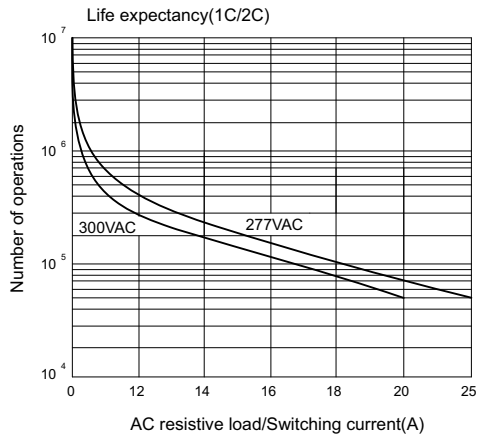
»» Engineering Data

◆ 731



◆ 731 H







Компания «ЭлектроПласт» предлагает заключение долгосрочных отношений при поставках импортных электронных компонентов на взаимовыгодных условиях!

Наши преимущества:

- Оперативные поставки широкого спектра электронных компонентов отечественного и импортного производства напрямую от производителей и с крупнейших мировых складов;
- Поставка более 17-ти миллионов наименований электронных компонентов;
- Поставка сложных, дефицитных, либо снятых с производства позиций;
- Оперативные сроки поставки под заказ (от 5 рабочих дней);
- Экспресс доставка в любую точку России;
- Техническая поддержка проекта, помощь в подборе аналогов, поставка прототипов;
- Система менеджмента качества сертифицирована по Международному стандарту ISO 9001;
- Лицензия ФСБ на осуществление работ с использованием сведений, составляющих государственную тайну;
- Поставка специализированных компонентов (Xilinx, Altera, Analog Devices, Intersil, Interpoint, Microsemi, Aeroflex, Peregrine, Syfer, Eurofarad, Texas Instrument, Miteq, Cobham, E2V, MA-COM, Hittite, Mini-Circuits, General Dynamics и др.);

Помимо этого, одним из направлений компании «ЭлектроПласт» является направление «Источники питания». Мы предлагаем Вам помощь Конструкторского отдела:

- Подбор оптимального решения, техническое обоснование при выборе компонента;
- Подбор аналогов;
- Консультации по применению компонента;
- Поставка образцов и прототипов;
- Техническая поддержка проекта;
- Защита от снятия компонента с производства.



Как с нами связаться

Телефон: 8 (812) 309 58 32 (многоканальный)

Факс: 8 (812) 320-02-42

Электронная почта: org@eplast1.ru

Адрес: 198099, г. Санкт-Петербург, ул. Калинина, дом 2, корпус 4, литера А.