

Demonstration board for L6491 gate driver with smartSD

Data brief



Features

- High voltage rail up to 600 V
- dV/dt immunity: 50 V/ns in full temperature range
- Driver current capability: 4 A source/sink
- Comparator for fault protections
- Smart shutdown function
- Integrated bootstrap diode
- Adjustable deadtime
- Interlocking function
- Switching times 15 ns rise/fall with 1 nF load
- 3.3 V, 5 V TTL/CMOS inputs with hysteresis
- Compact and simplified layout
- Bill of material reduction
- Effective fault protection
- Flexible, easy and fast design

Description

The L6491 is a high voltage device manufactured with the BCD6 “OFF-LINE” technology. It is a single-chip half-bridge gate driver for N-channel power MOSFETs or IGBTs, with a 4 A sink and source current capability.

The high-side (floating) section is designed to stand a voltage rail up to 600 V. The logic inputs are CMOS/TTL compatible down to 3.3 V for easy interfacing a microcontroller or DSP.

An integrated comparator is available for fast overcurrent protection, and is also suited for other functions such overtemperature, etc.

The EVAL6491HB board allows evaluating all of the L6491 features while driving a power switch with voltage rating up to 600 V in TO-220 or TO-247 packages.

The board allows easily selecting and modifying the values of relevant external components in order to ease driver's performance evaluation under different applicative conditions and fine pre-tuning of final application's components.

Table 1. L6491 - bill of material

Part reference	Part value	Part description
C1	68 μ F / 450 V	Electrolytic capacitor, 68 μ F 450 V 20% radial P 7.5 mm 18 x 25
C2	2.2 μ F / 50 V	Ceramic capacitor, SMT 1206 or T. H.
C4, C6, C10, C12	220 nF / 50 V	Ceramic capacitor, SMT 0603
C5	1 nF / 25 V	Ceramic capacitor, SMT 0603
C7,C9	33 pF / 25 V	Ceramic capacitor, SMT 0603
C8	4.7 μ F / 25 V	Ceramic capacitor, SMT 0603
C11	10 μ F / 50 V	Ceramic capacitor, SMT 1206
C3A	D. N. M.	Ceramic capacitor, SMT 1206 or T. H.
C3	5.6 nF / 25 V	Ceramic capacitor, SMT 0603
D1,D2	DB2X41500L	Diode Schottky 40 V, 3 A, SOD-123
D3	D.N.M.	DO-41 or SMA
J1	3 x GIXO 720-02-1 or similar	Conn. term. block T. H. 6 POS 3.5 mm
J2	FCI 68000-406HLF or similar	Conn. header 6 POS 2.54 mm STR TIN
J3	GIXO 740-03-1 or similar	Conn. term. block T.H. 3 POS 5.0 mm
JP1, JP2, JP3	Jumper - OPEN	SMT jumper
JP4, JP5	Jumper - CLOSED	SMT jumper
Q1,Q2	To be selected by customer	IGBT/MOSFET, TO-220 or TO-247
R1	43 k Ω	Resistor, SMT 1206 or T. H.
R2, R4, R3, R5	To be selected by customer	Resistor, SMT 1206 or T. H.
R15	6.8 Ω	Resistor, SMT 1206
R6	4.7 k Ω	Resistor, SMT 0603
R7, R13, R14	1 k Ω	Resistor, SMT 0603
R16, R17	D.N.M.	Resistor, SMT 0603
R8, R9, R10, R11, R12	0.2 Ω , 1%, 2 W	Resistor, SMT 2512
TP1, TP2, TP3, TP4, TP5, TP6, TP7	RS 200-207 or similar	PCB test terminal 1 mm
TR1	BI Technologies 67WR500LF or similar	Trimmer 500 Ω , 0.5 W, T. H.
TR2	Murata PV36W204C01B00 or similar	Trimmer 200 k Ω , 0.5 W, T. H.
U1	L6491	High voltage high and low-side gate driver, SO-14

Figure 2. EVAL6491HB - layout (top layer)

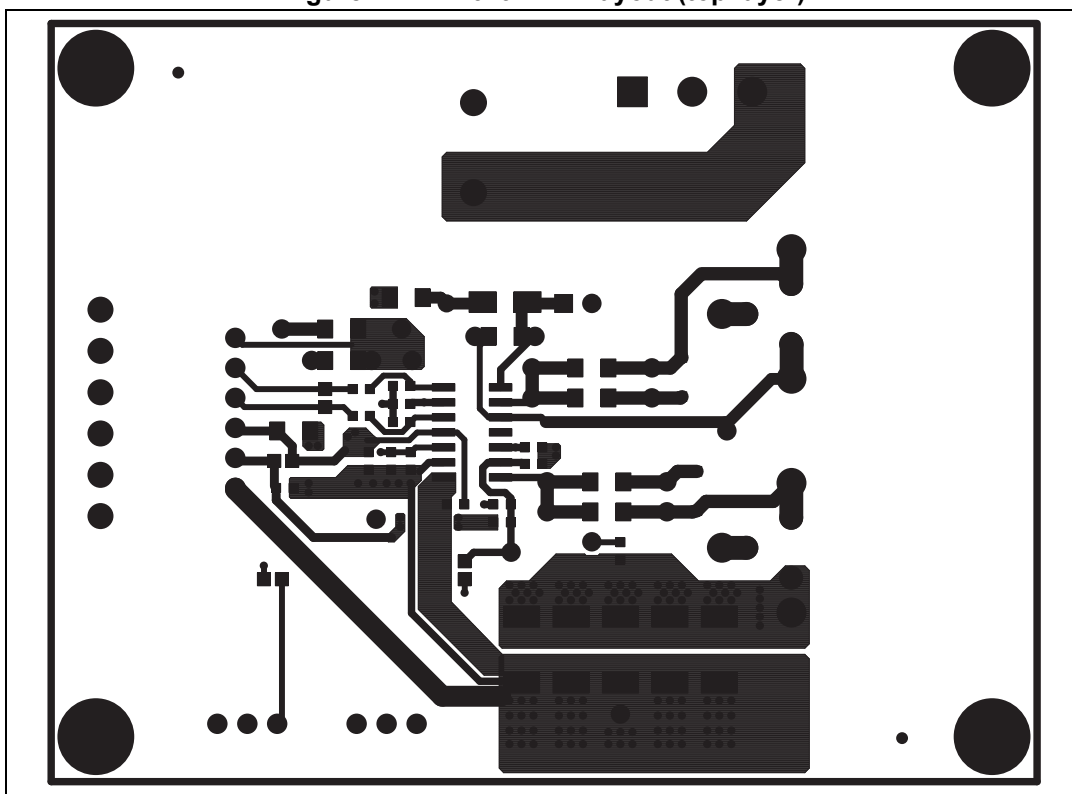


Figure 3. EVAL6491HB - layout (bottom layer)

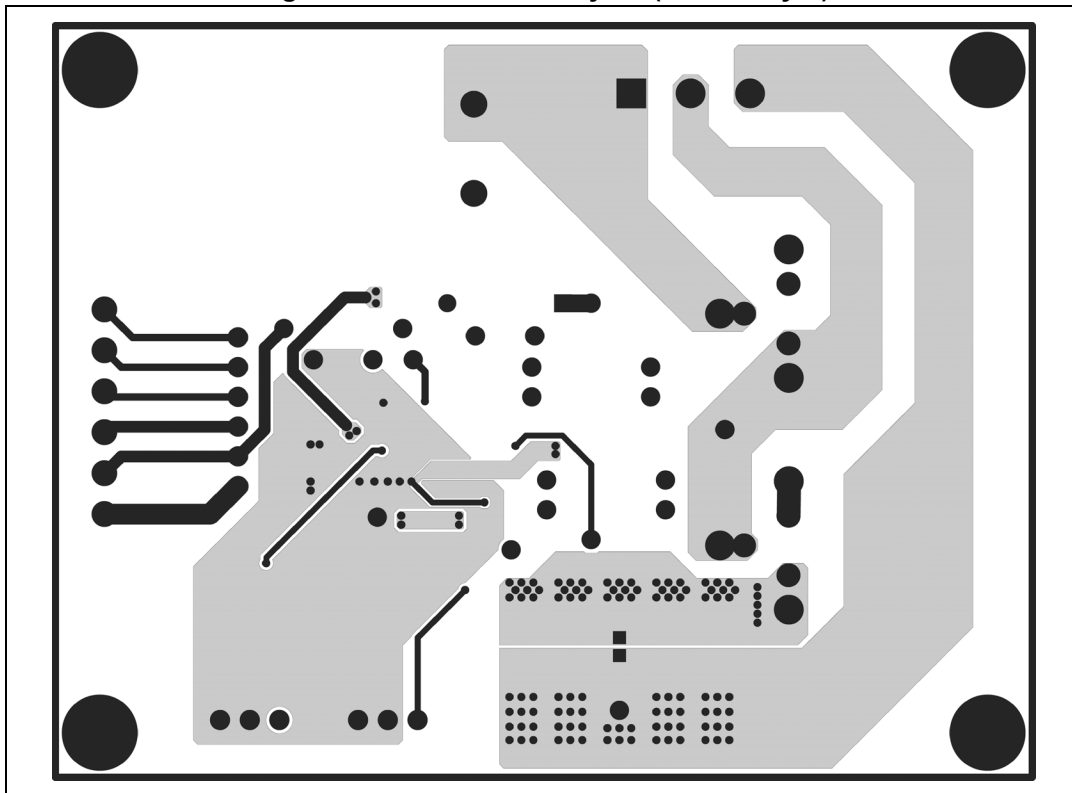
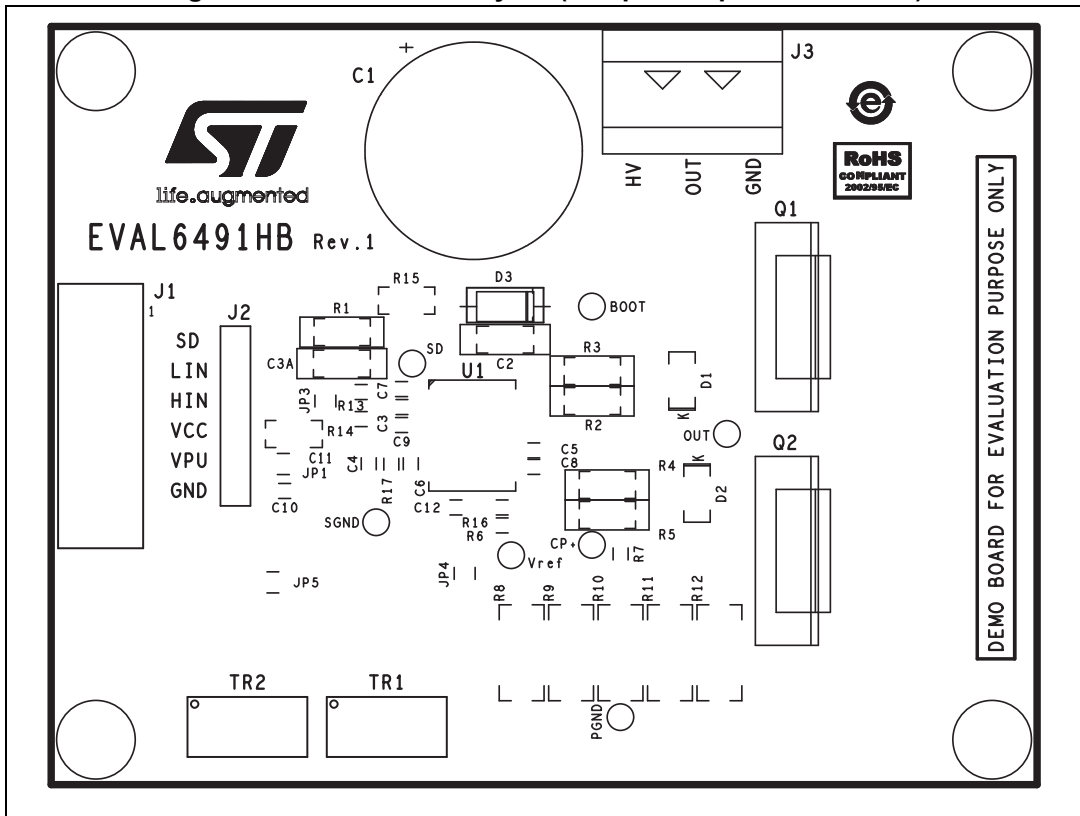


Figure 4. EVAL6491HB - layout (component placement view)



Revision history

Table 2. Document revision history

Date	Revision	Changes
09-Apr-2015	1	Initial release.

IMPORTANT NOTICE – PLEASE READ CAREFULLY

STMicroelectronics NV and its subsidiaries ("ST") reserve the right to make changes, corrections, enhancements, modifications, and improvements to ST products and/or to this document at any time without notice. Purchasers should obtain the latest relevant information on ST products before placing orders. ST products are sold pursuant to ST's terms and conditions of sale in place at the time of order acknowledgement.

Purchasers are solely responsible for the choice, selection, and use of ST products and ST assumes no liability for application assistance or the design of Purchasers' products.

No license, express or implied, to any intellectual property right is granted by ST herein.

Resale of ST products with provisions different from the information set forth herein shall void any warranty granted by ST for such product.

ST and the ST logo are trademarks of ST. All other product or service names are the property of their respective owners.

Information in this document supersedes and replaces information previously supplied in any prior versions of this document.

© 2015 STMicroelectronics – All rights reserved



Компания «ЭлектроПласт» предлагает заключение долгосрочных отношений при поставках импортных электронных компонентов на взаимовыгодных условиях!

Наши преимущества:

- Оперативные поставки широкого спектра электронных компонентов отечественного и импортного производства напрямую от производителей и с крупнейших мировых складов;
- Поставка более 17-ти миллионов наименований электронных компонентов;
- Поставка сложных, дефицитных, либо снятых с производства позиций;
- Оперативные сроки поставки под заказ (от 5 рабочих дней);
- Экспресс доставка в любую точку России;
- Техническая поддержка проекта, помощь в подборе аналогов, поставка прототипов;
- Система менеджмента качества сертифицирована по Международному стандарту ISO 9001;
- Лицензия ФСБ на осуществление работ с использованием сведений, составляющих государственную тайну;
- Поставка специализированных компонентов (Xilinx, Altera, Analog Devices, Intersil, Interpoint, Microsemi, Aeroflex, Peregrine, Syfer, Eurofarad, Texas Instrument, Miteq, Cobham, E2V, MA-COM, Hittite, Mini-Circuits, General Dynamics и др.);

Помимо этого, одним из направлений компании «ЭлектроПласт» является направление «Источники питания». Мы предлагаем Вам помощь Конструкторского отдела:

- Подбор оптимального решения, техническое обоснование при выборе компонента;
- Подбор аналогов;
- Консультации по применению компонента;
- Поставка образцов и прототипов;
- Техническая поддержка проекта;
- Защита от снятия компонента с производства.



Как с нами связаться

Телефон: 8 (812) 309 58 32 (многоканальный)

Факс: 8 (812) 320-02-42

Электронная почта: org@eplast1.ru

Адрес: 198099, г. Санкт-Петербург, ул. Калинина, дом 2, корпус 4, литера А.